

# LINCOLN COUNTY U.S. PUBLIC LAND SECTION SUMMARY

SECTION 20  
TOWNSHIP 31N  
RANGE 4 E

CORNING  
CITY, VILLAGE, TOWN



CERTIFIED CORRECT

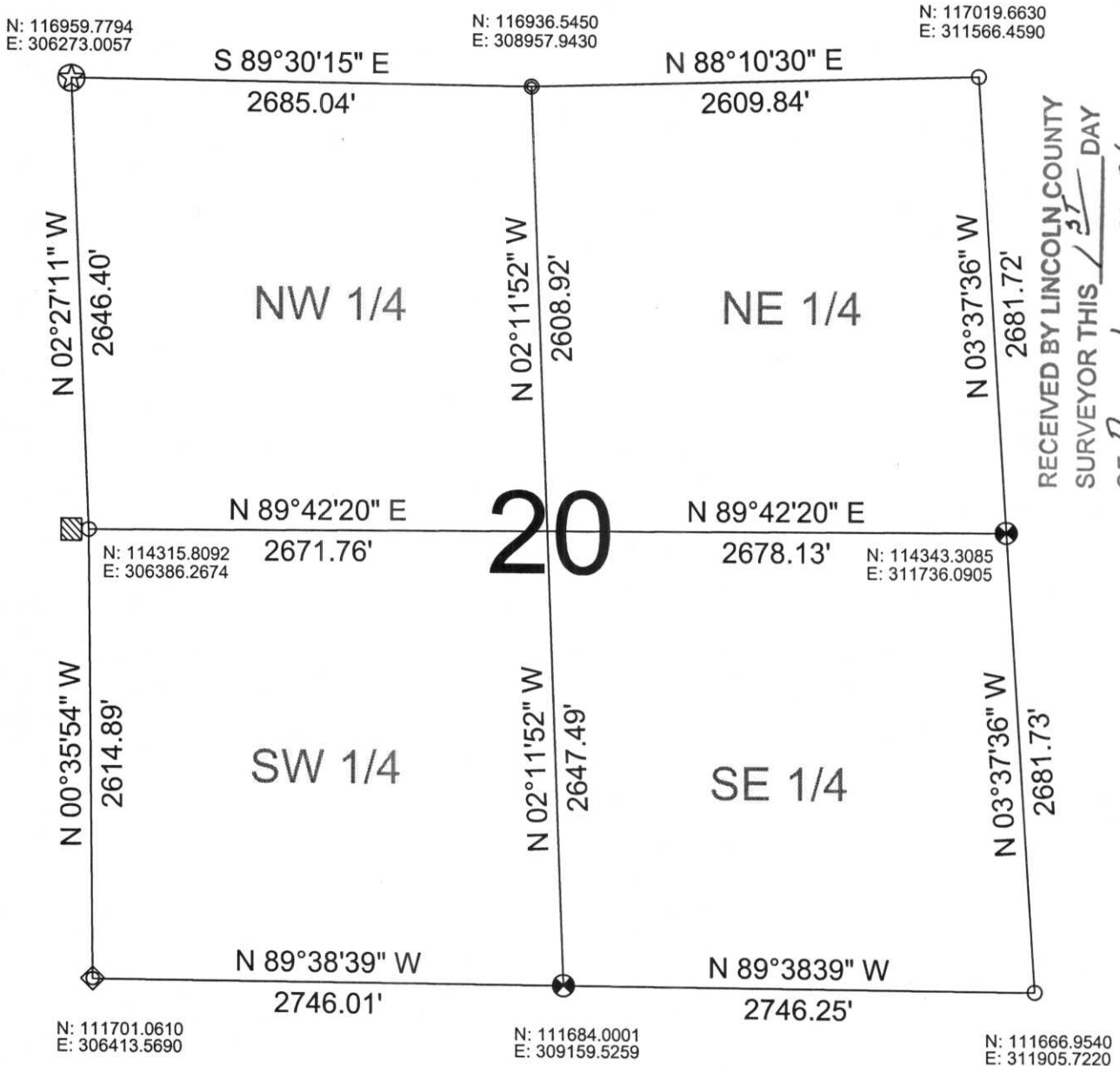
*Ronald Jacobson*  
Ronald Jacobson RLS 2059-008  
Registered Land Surveyor

DATE: November 30, 2006



NOT TO SCALE  
BEARINGS REFERENCED  
TO LINCOLN COUNTY  
COORDINATE SYSTEM

COORDINATES ARE REFERENCED  
TO LINCOLN COUNTY COORDINATE  
SYSTEM AS DEVELOPED BY THE WI.  
DEPARTMENT OF TRANSPORTATION  
AND ARE BASED ON GPS OBSERVATIONS  
TO CONTROL POINTS AS SUPPLIED BY  
LINCOLN COUNTY.



RECEIVED BY LINCOLN COUNTY  
SURVEYOR THIS 13<sup>TH</sup> DAY  
OF December 20 06  
*Tony Oulter*  
COUNTY SURVEYOR