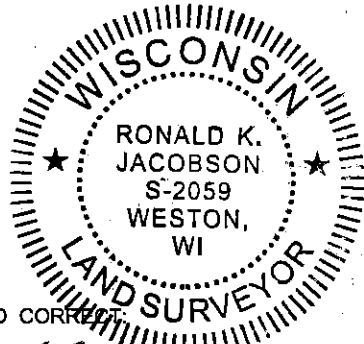


LINCOLN COUNTY U.S. PUBLIC LAND SECTION SUMMARY

SECTION 18
TOWNSHIP 31N
RANGE 4 E

CORNING
CITY, VILLAGE, TOWN

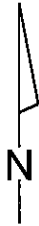


CERTIFIED CORRECT

Ronald Jacobson
Ronald Jacobson RLS 2059-008

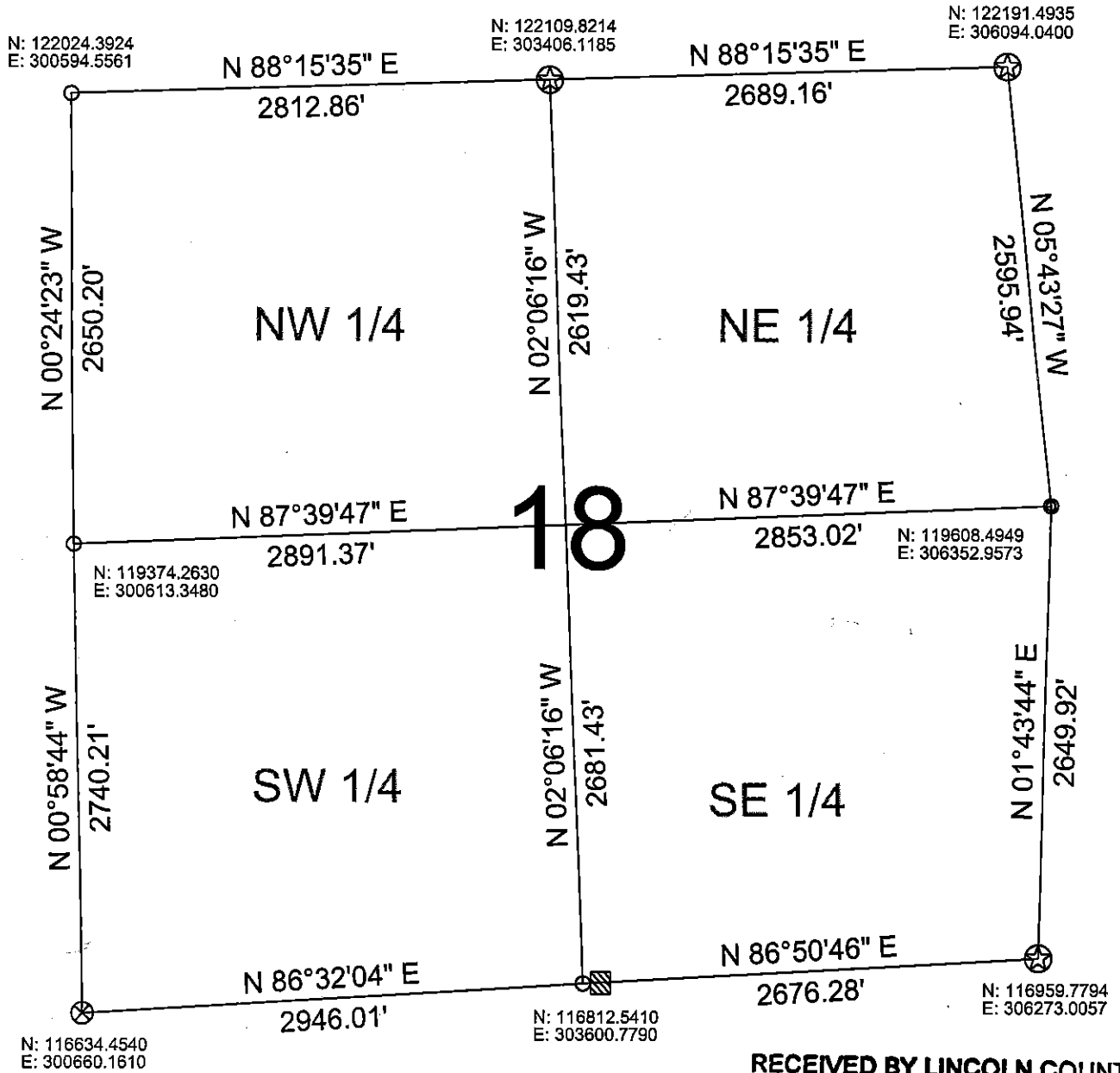
Registered Land Surveyor

DATE: November 21, 2006



NOT TO SCALE
BEARINGS REFERENCED
TO LINCOLN COUNTY
COORDINATE SYSTEM

COORDINATES ARE REFERENCED
TO LINCOLN COUNTY COORDINATE
SYSTEM AS DEVELOPED BY THE WI.
DEPARTMENT OF TRANSPORTATION
AND ARE BASED ON GPS OBSERVATIONS
TO CONTROL POINTS AS SUPPLIED BY
LINCOLN COUNTY.



LEGEND

- FOUND 1" IRON PIPE
- FOUND 1.5" IRON PIPE
- ⊗ SET LINCOLN COUNTY BERNSTEN MONUMENT
- ★ SET 6" ALUMINUM SWAMP MONUMENT
- ⊗ FOUND LINCOLN COUNTY BERNSTEN MONUMENT
- ▨ FOUND WOOD POST

DRAFTED BY: Lee
DATE: November 20, 2006

RECEIVED BY LINCOLN COUNTY
SURVEYOR THIS 22ND DAY

OF November 20 06

Tommy Dall
COUNTY SURVEYOR

Central Wisconsin Engineers & Architects
5707 Schofield Ave.
Weston, Wisconsin 54476
(715) 359-9400