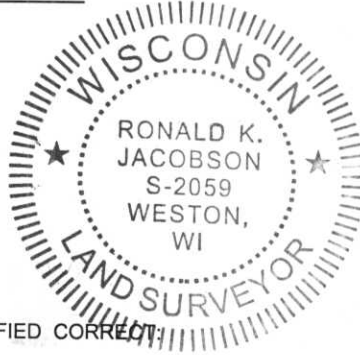


LINCOLN COUNTY U.S. PUBLIC LAND SECTION SUMMARY

SECTION 13
TOWNSHIP 31N
RANGE 4 E

CORNING
CITY, VILLAGE, TOWN



CERTIFIED CORRECT

Ronald Jacobson RLS 2059-008

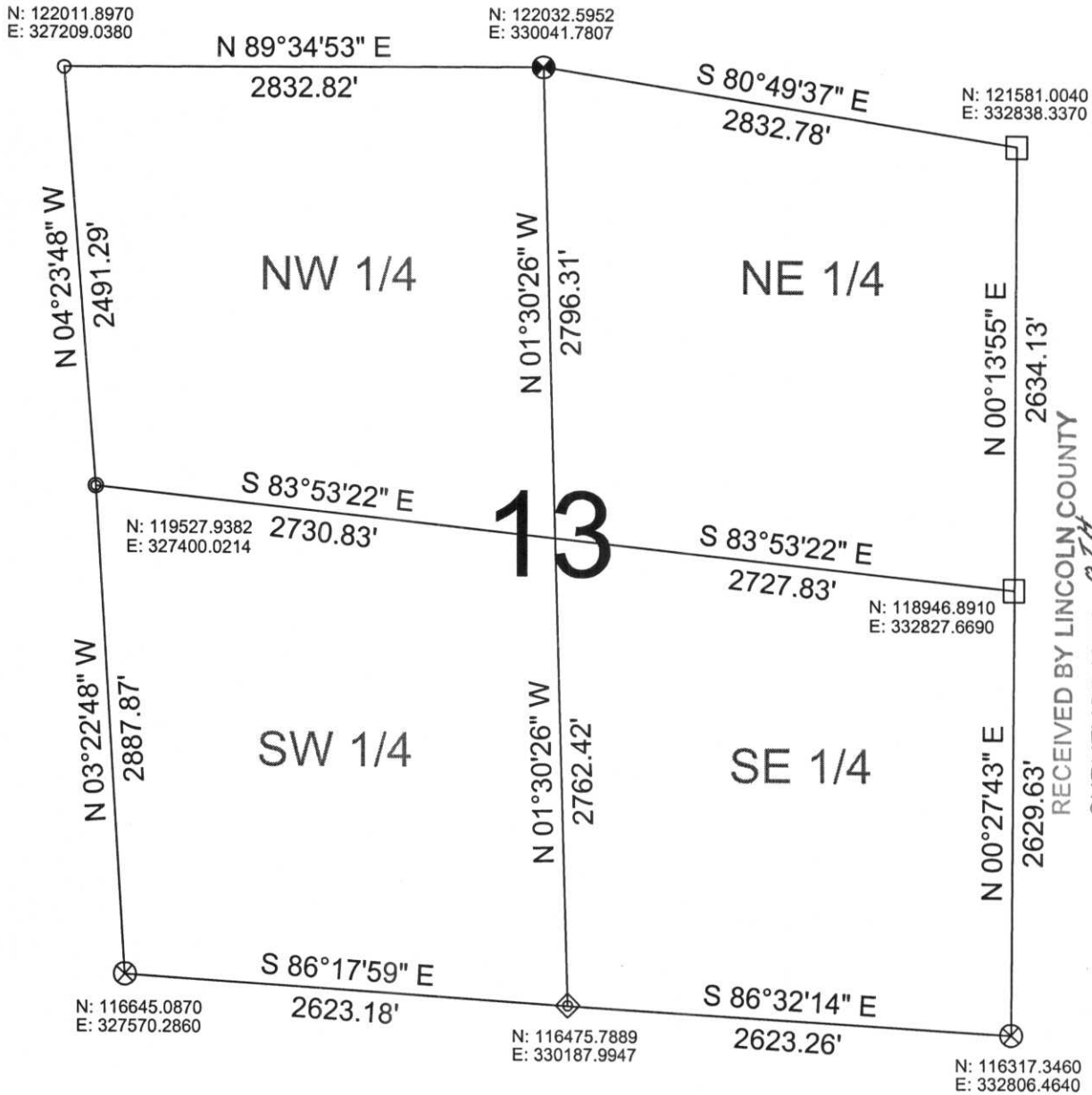
Registered Land Surveyor

DATE: November 3, 2006

COORDINATES ARE REFERENCED TO LINCOLN COUNTY COORDINATE SYSTEM AS DEVELOPED BY THE WI. DEPARTMENT OF TRANSPORTATION AND ARE BASED ON GPS OBSERVATIONS TO CONTROL POINTS AS SUPPLIED BY LINCOLN COUNTY.



NOT TO SCALE
BEARINGS REFERENCED TO LINCOLN COUNTY COORDINATE SYSTEM



RECEIVED BY LINCOLN COUNTY
SURVEYOR THIS 8TH DAY
OF November 20 06
Romy Dahl
COUNTY SURVEYOR

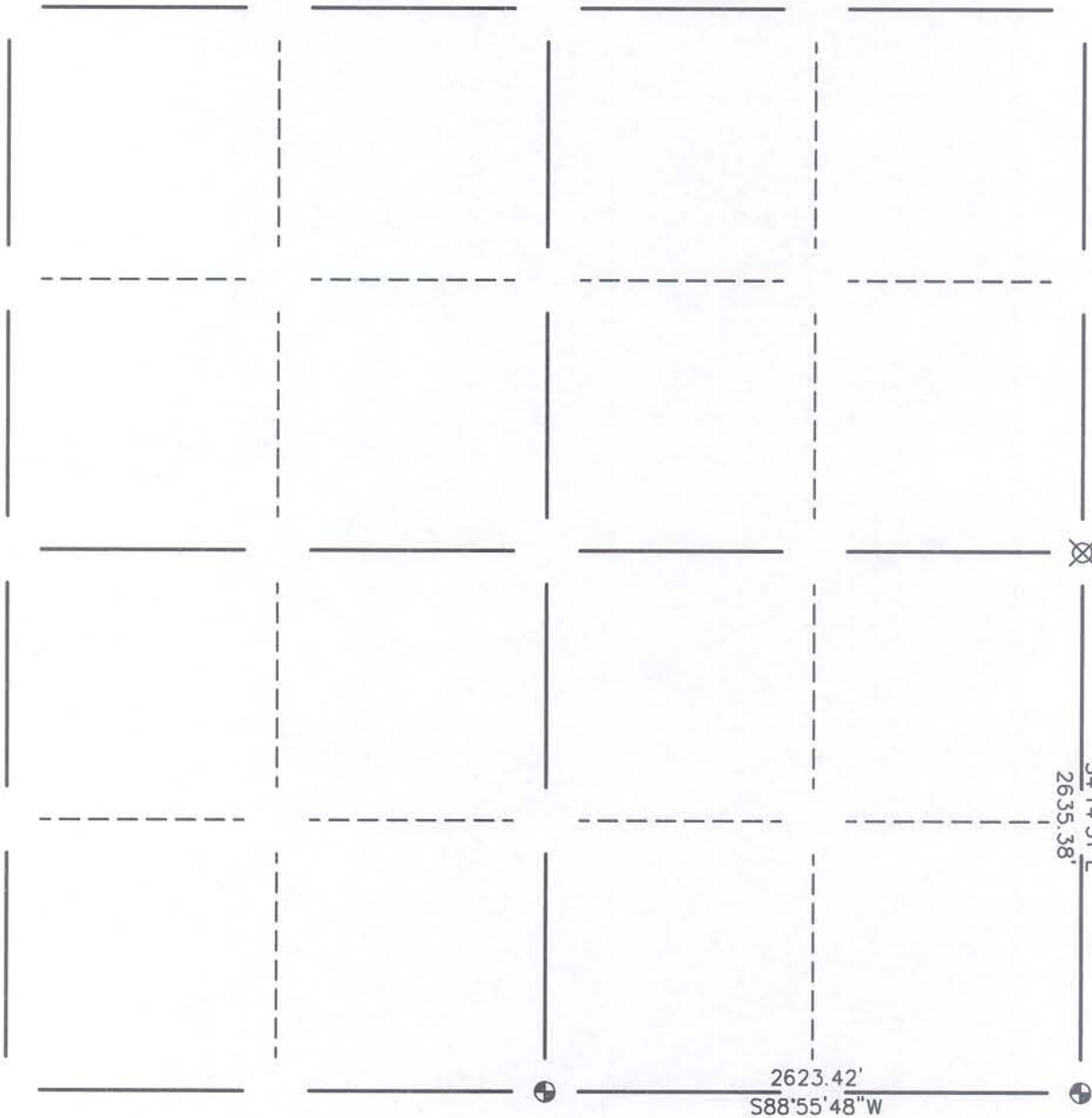
LEGEND

- FOUND STONE MONUMENT
 - ⊗ SET LINCOLN COUNTY BERNSTEN MOMUMENT
 - ⊗ FOUND LINCOLN COUNTY BERNSTEN MOMUMENT
 - ◇ CALCULATED PER TIE SHEET ON RECORD
 - FOUND 2" IRON PIPE
 - CALCULATED PER CORDINATES GIVEN BY LINCOLN COUNTY SURVEYOR
- DRAFTED BY: Lee
DATE: November 3, 2006

Central Wisconsin Engineers & Architects
5707 Schofield Ave.
Weston, Wisconsin 54476
(715) 359-9400

Lincoln
County
Surveyor

SECTION SUMMARY 13 — 31 — 4
 Section Township Range
 CORNING
 Town



LEGEND

- ⊕ — Berntsen Monument
- ⊗ — Lincoln County Swamp Rod



CERTIFIED CORRECT:

William W. Nutter, RLS

William W. Nutter
 Registered Land Surveyor

DATE: 4-19-2004