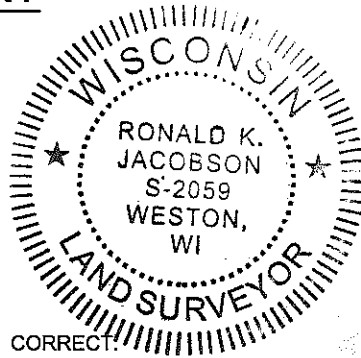


# LINCOLN COUNTY U.S. PUBLIC LAND SECTION SUMMARY

SECTION 7  
TOWNSHIP 31N  
RANGE 4E

CORNING  
CITY, VILLAGE, TOWN



CERTIFIED CORRECT

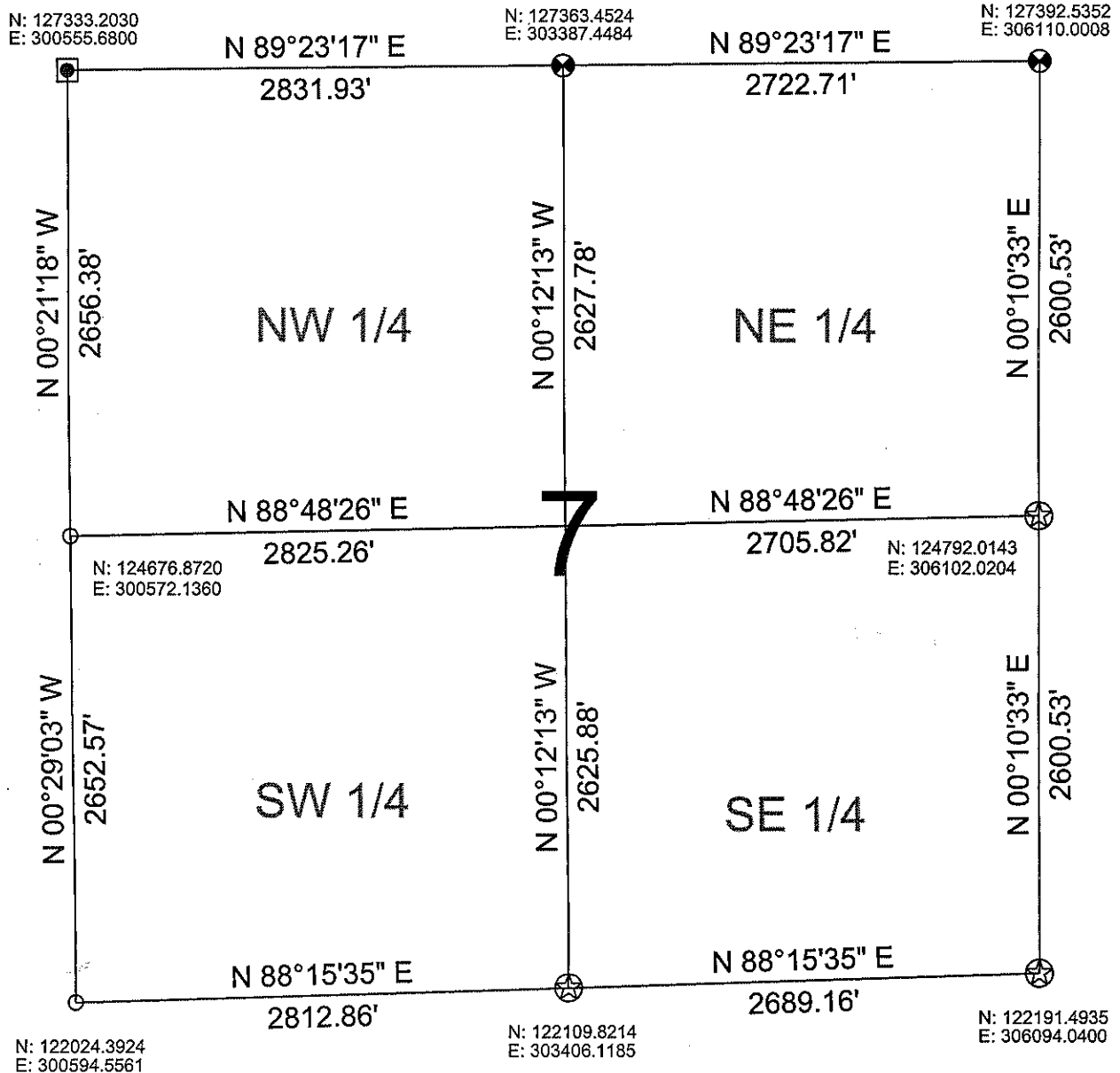
*Ronald K. Jacobson*  
Ronald Jacobson RLS 2059-008

Registered Land Surveyor

DATE: November 21, 2006

COORDINATES ARE REFERENCED TO LINCOLN COUNTY COORDINATE SYSTEM AS DEVELOPED BY THE WI. DEPARTMENT OF TRANSPORTATION AND ARE BASED ON GPS OBSERVATIONS TO CONTROL POINTS AS SUPPLIED BY LINCOLN COUNTY.

NOT TO SCALE  
BEARINGS REFERENCED TO LINCOLN COUNTY COORDINATE SYSTEM



RECEIVED BY LINCOLN COUNTY

LEGEND

- FOUND 1" IRON PIPE
- ⊗ SET LINCOLN COUNTY BERNSTEIN MONUMENT
- ◼ FOUND .75" IRON ROD W/CAP
- ⊙ SET 6" ALUMINUM SWAMP MONUMENT

SURVEYOR THIS 22<sup>ND</sup> DAY  
OF November 20 06  
*Tony Dahl*  
COUNTY SURVEYOR

DRAFTED BY: Lee  
DATE: November 14, 2006

Central Wisconsin Engineers & Architects  
5707 Schofield Ave.  
Weston, Wisconsin 54476  
(715) 359-9400