

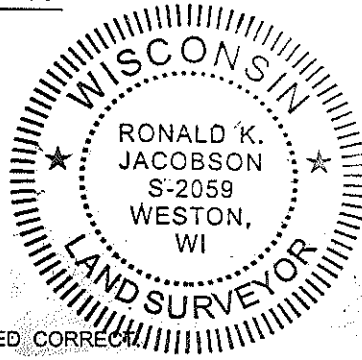
LINCOLN COUNTY U.S. PUBLIC LAND

SECTION SUMMARY

SECTION 5
 TOWNSHIP 31N
 RANGE 4E

CORNING

CITY, VILLAGE, TOWN



CERTIFIED CORRECT

Ronald Jacobson
 Ronald Jacobson RLS 2059-008

Registered Land Surveyor

DATE: November 17, 2006

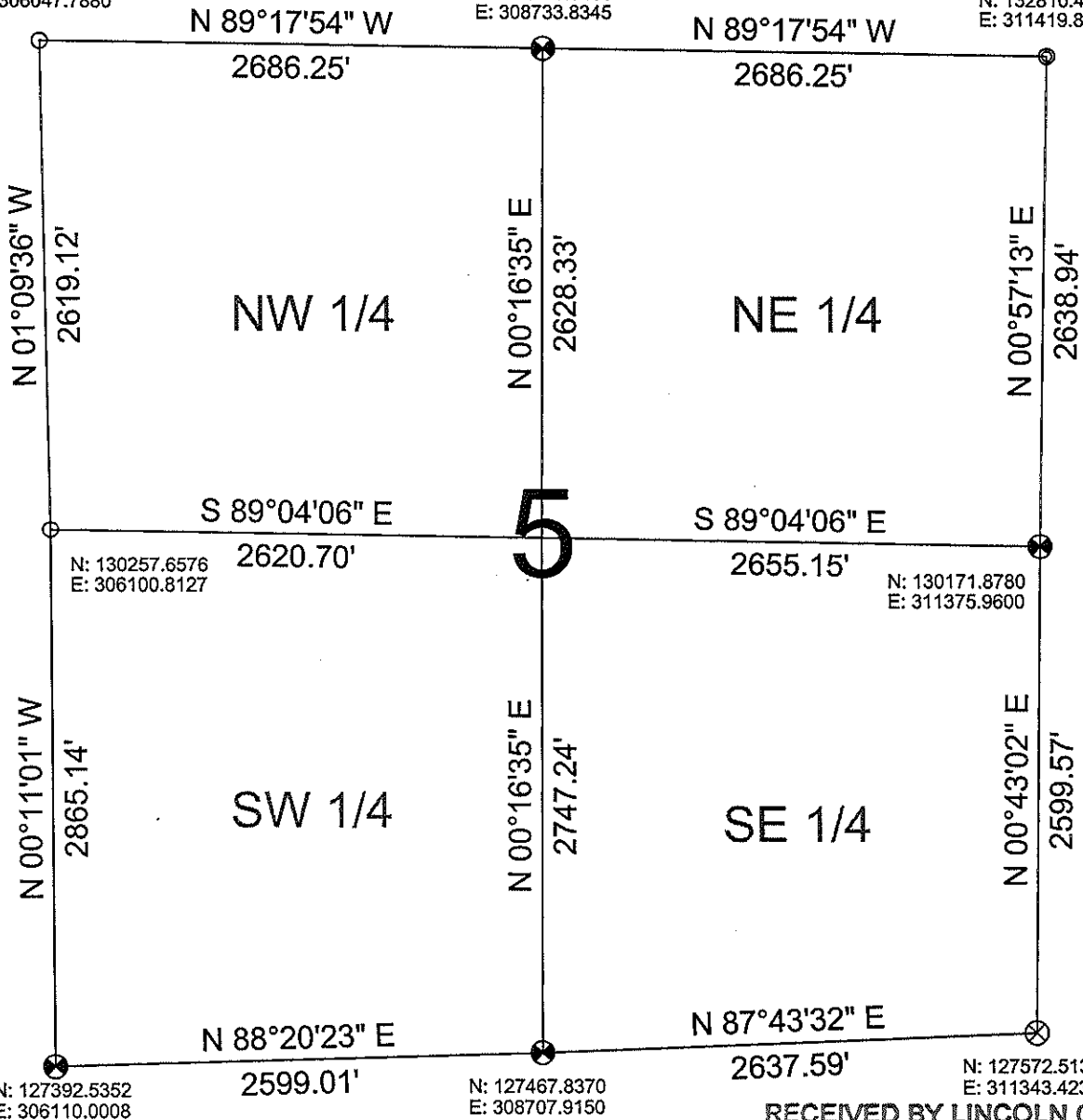
COORDINATES ARE REFERENCED TO LINCOLN COUNTY COORDINATE SYSTEM AS DEVELOPED BY THE WI. DEPARTMENT OF TRANSPORTATION AND ARE BASED ON GPS OBSERVATIONS TO CONTROL POINTS AS SUPPLIED BY LINCOLN COUNTY.

NOT TO SCALE
 BEARINGS REFERENCED TO LINCOLN COUNTY COORDINATE SYSTEM

N: 132876.2400
 E: 306047.7880

N: 132843.3460
 E: 308733.8345

N: 132810.4520
 E: 311419.8810



RECEIVED BY LINCOLN COUNTY SURVEYOR THIS 22ND DAY

LEGEND

- FOUND 1" IRON PIPE
- ⊙ FOUND 1.5" IRON PIPE
- ⊗ SET LINCOLN COUNTY BERNSTEN MONUMENT
- ⊗ FOUND LINCOLN COUNTY BERNSTEN MONUMENT

DRAFTED BY: Lee
 DATE: November 14, 2006

OF November 20 06
Tom Dole
 COUNTY SURVEYOR
 Central Wisconsin Engineers & Architects
 5707 Schofield Ave.
 Weston, Wisconsin 54476
 (715) 359-9400