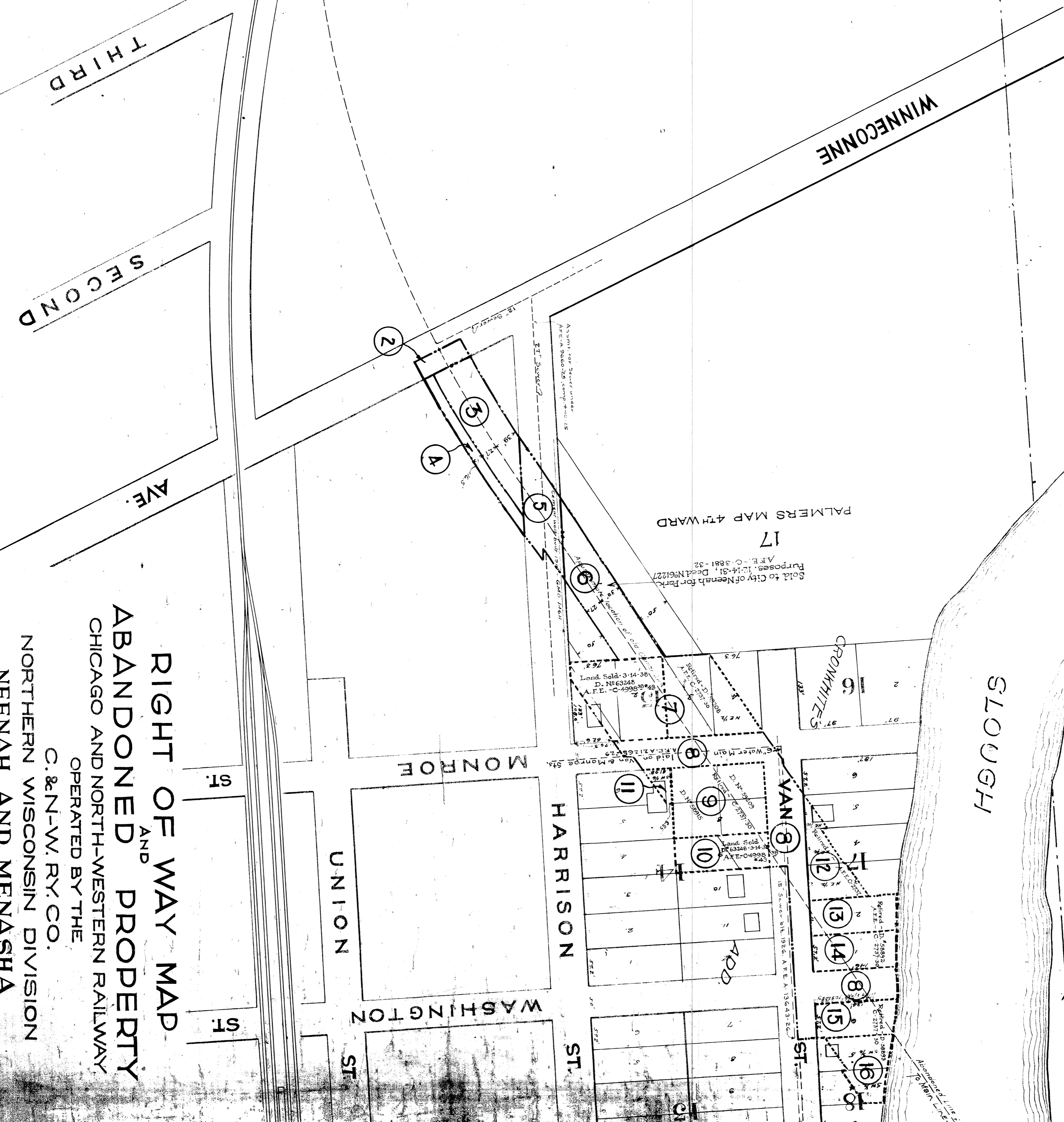
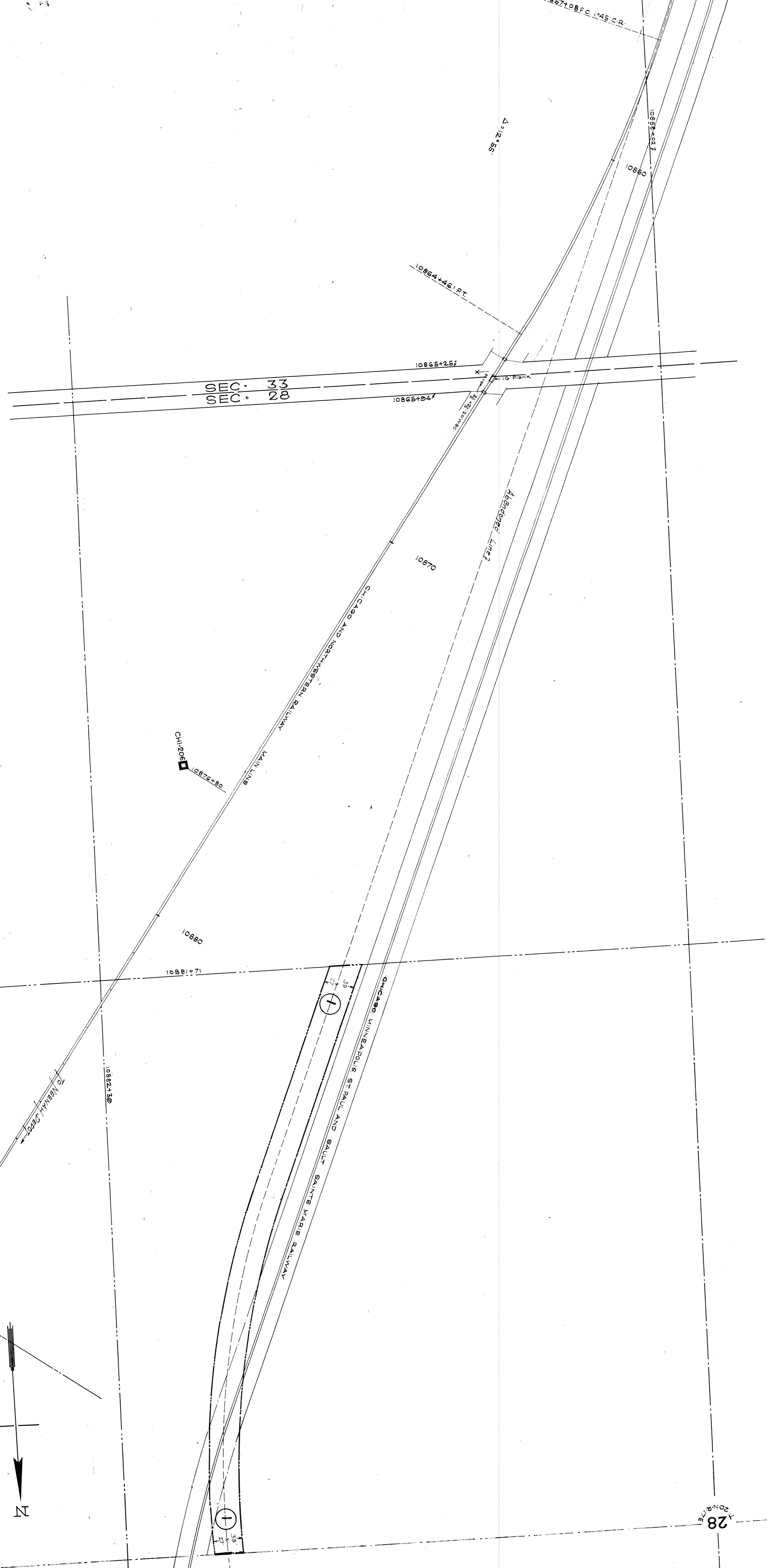


CHANGING NOTES - S.K.V. - APR. 30 1917  
 TRACED BY - G.F.F. - MAY 11, 1917  
 CHECKED BY - S.K.V. - MAY 21, 1917



Sheet No. 88 of 46, C. & N.W. Ry.  
 from Survey Station  
 to Survey Station

Validation Engineer

**RIGHT OF WAY MAP**  
 AND  
**ABANDONED PROPERTY**  
 CHICAGO AND NORTH-WESTERN RAILWAY  
 OPERATED BY THE  
 C. & N.-W. RY. CO.  
 NORTHERN WISCONSIN DIVISION  
 NEENAH AND MENASHA  
 STA.  
 TO STA.

SCALE: 1 in. = 100 FT.  
 JUNE 30, 1917  
 OFFICE OF CHIEF ENGINEER  
 CHICAGO, ILL.