

| Project | Section | Kind of Investment | Date of Investment | Service | Number of Property | Recorded | Area | From | To |
|---------|---------|--------------------|--------------------|------------------------------|--------------------|-------------|------|------|----|
| 1 | 1 | Land | 1-13-88 | Land & River Improvement Co. | 1 | 123 12-1-88 | 4.50 | | |
| 2 | 2 | Land | 1-17-88 | Land & River Co. | 0 | 60 12-1-88 | | | |
| 3 | 3 | Land | 1-17-88 | Land & River Co. | 0 | 60 12-1-88 | | | |
| 4 | 4 | Land | 1-17-88 | Land & River Co. | 0 | 60 12-1-88 | | | |
| 5 | 5 | Land | 7-1-88 | Land & River Co. | 0 | 60 12-1-88 | | | |
| 6 | 6 | Land | 1-13-88 | Land & River Co. | 0 | 60 12-1-88 | | | |
| 7 | 7 | Land | 1-13-88 | Land & River Co. | 0 | 60 12-1-88 | | | |
| 8 | 8 | Land | 1-13-88 | Land & River Co. | 0 | 60 12-1-88 | | | |
| 9 | 9 | Land | 1-13-88 | Land & River Co. | 0 | 60 12-1-88 | | | |
| 10 | 10 | Land | 1-13-88 | Land & River Co. | 0 | 60 12-1-88 | | | |
| 11 | 11 | Land | 1-13-88 | Land & River Co. | 0 | 60 12-1-88 | | | |
| 12 | 12 | Land | 1-13-88 | Land & River Co. | 0 | 60 12-1-88 | | | |
| 13 | 13 | Land | 1-13-88 | Land & River Co. | 0 | 60 12-1-88 | | | |
| 14 | 14 | Land | 1-13-88 | Land & River Co. | 0 | 60 12-1-88 | | | |
| 15 | 15 | Land | 1-13-88 | Land & River Co. | 0 | 60 12-1-88 | | | |
| 16 | 16 | Land | 1-13-88 | Land & River Co. | 0 | 60 12-1-88 | | | |
| 17 | 17 | Land | 1-13-88 | Land & River Co. | 0 | 60 12-1-88 | | | |
| 18 | 18 | Land | 1-13-88 | Land & River Co. | 0 | 60 12-1-88 | | | |
| 19 | 19 | Land | 1-13-88 | Land & River Co. | 0 | 60 12-1-88 | | | |
| 20 | 20 | Land | 1-13-88 | Land & River Co. | 0 | 60 12-1-88 | | | |
| 21 | 21 | Land | 1-13-88 | Land & River Co. | 0 | 60 12-1-88 | | | |
| 22 | 22 | Land | 1-13-88 | Land & River Co. | 0 | 60 12-1-88 | | | |

AMERICAN STEEL BARGE CO.



8276 No. 1-1-88 to Superior City
 Building Director envelope of 1-1-88

8276 No. 1-1-88 to Superior City
 Building Director envelope of 1-1-88

8276 No. 1-1-88 to Superior City
 Building Director envelope of 1-1-88

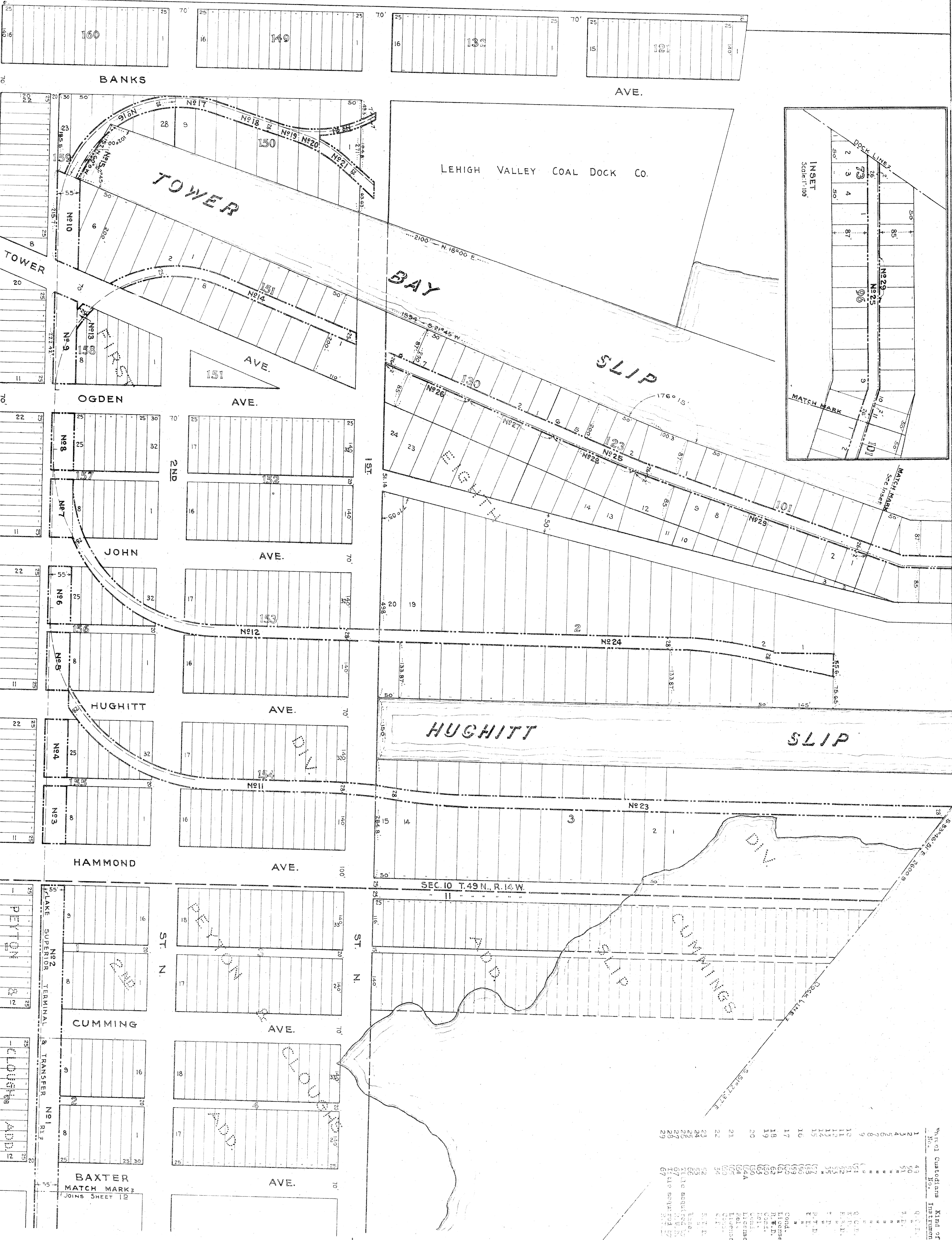
STATION MAP - LANDS
 SUPERIOR
 DOUGLASS CO., WIS.
 L. SUPERIOR TRK. & TRR. CO.
 ST. PAUL, MINN.

LAKE SUPERIOR TERMINAL & TRANSFER RY No 22

NORTHERN PACIFIC RY MAIN LINE

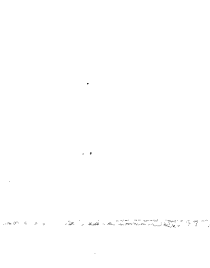
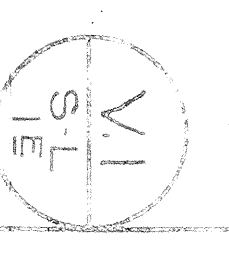
DULUTH SOUTH SHORE & ATLANTIC RY

CHICAGO ST. PAUL MINNEAPOLIS & OMAHA RY

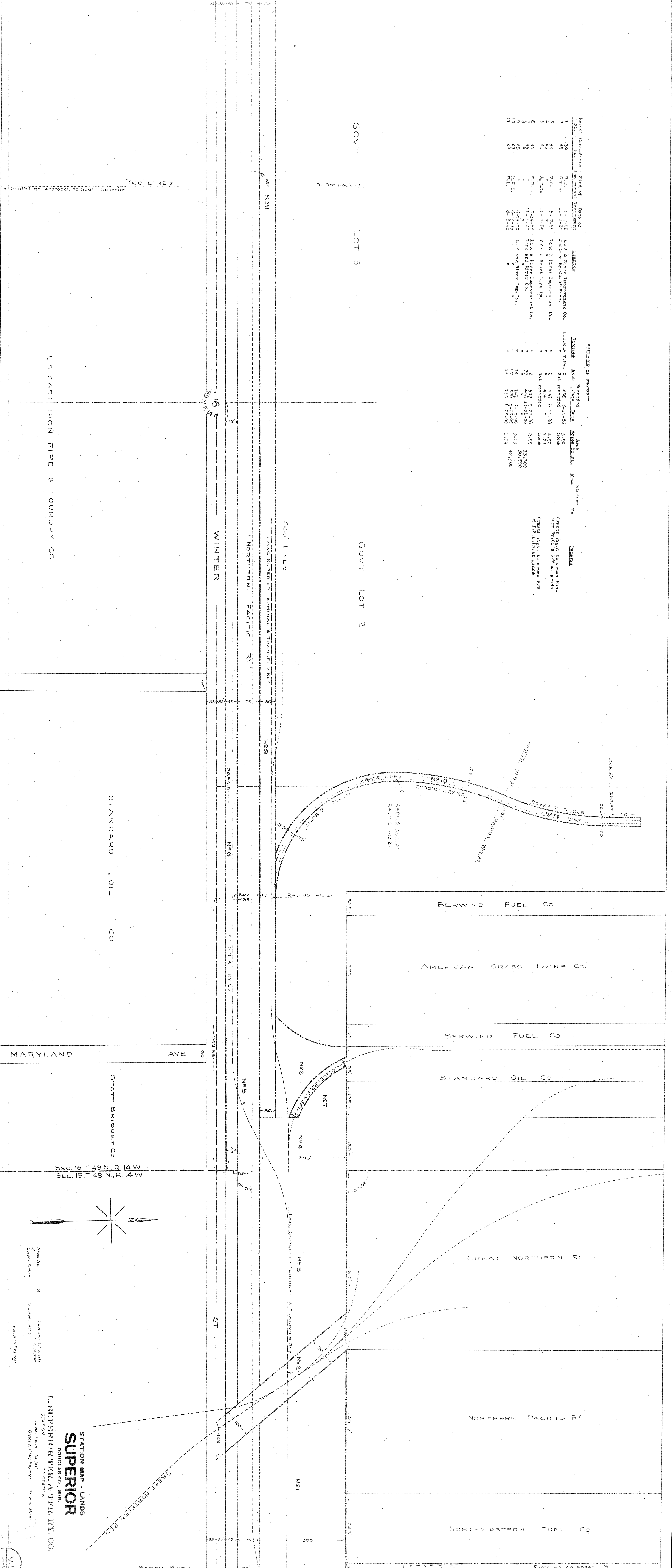


| No. | Containing | Kind of | Date of | Genitor | Genitor | Acres | Filed | Area | Station |
|-----|------------|---------|---------|---------------|---------------|--------|---------|--------|---------|
| 1 | 4.11 | Q.C.T. | 7-13-88 | H. W. Peckham | H. W. Peckham | 14.582 | 9-29-88 | 14.582 | 22 |
| 2 | 1.11 | Q.C.T. | 7-13-88 | H. W. Peckham | H. W. Peckham | 14.582 | 9-29-88 | 14.582 | 22 |
| 3 | 1.11 | Q.C.T. | 7-13-88 | H. W. Peckham | H. W. Peckham | 14.582 | 9-29-88 | 14.582 | 22 |
| 4 | 1.11 | Q.C.T. | 7-13-88 | H. W. Peckham | H. W. Peckham | 14.582 | 9-29-88 | 14.582 | 22 |
| 5 | 1.11 | Q.C.T. | 7-13-88 | H. W. Peckham | H. W. Peckham | 14.582 | 9-29-88 | 14.582 | 22 |
| 6 | 1.11 | Q.C.T. | 7-13-88 | H. W. Peckham | H. W. Peckham | 14.582 | 9-29-88 | 14.582 | 22 |
| 7 | 1.11 | Q.C.T. | 7-13-88 | H. W. Peckham | H. W. Peckham | 14.582 | 9-29-88 | 14.582 | 22 |
| 8 | 1.11 | Q.C.T. | 7-13-88 | H. W. Peckham | H. W. Peckham | 14.582 | 9-29-88 | 14.582 | 22 |
| 9 | 1.11 | Q.C.T. | 7-13-88 | H. W. Peckham | H. W. Peckham | 14.582 | 9-29-88 | 14.582 | 22 |
| 10 | 1.11 | Q.C.T. | 7-13-88 | H. W. Peckham | H. W. Peckham | 14.582 | 9-29-88 | 14.582 | 22 |
| 11 | 1.11 | Q.C.T. | 7-13-88 | H. W. Peckham | H. W. Peckham | 14.582 | 9-29-88 | 14.582 | 22 |
| 12 | 1.11 | Q.C.T. | 7-13-88 | H. W. Peckham | H. W. Peckham | 14.582 | 9-29-88 | 14.582 | 22 |
| 13 | 1.11 | Q.C.T. | 7-13-88 | H. W. Peckham | H. W. Peckham | 14.582 | 9-29-88 | 14.582 | 22 |
| 14 | 1.11 | Q.C.T. | 7-13-88 | H. W. Peckham | H. W. Peckham | 14.582 | 9-29-88 | 14.582 | 22 |
| 15 | 1.11 | Q.C.T. | 7-13-88 | H. W. Peckham | H. W. Peckham | 14.582 | 9-29-88 | 14.582 | 22 |
| 16 | 1.11 | Q.C.T. | 7-13-88 | H. W. Peckham | H. W. Peckham | 14.582 | 9-29-88 | 14.582 | 22 |
| 17 | 1.11 | Q.C.T. | 7-13-88 | H. W. Peckham | H. W. Peckham | 14.582 | 9-29-88 | 14.582 | 22 |
| 18 | 1.11 | Q.C.T. | 7-13-88 | H. W. Peckham | H. W. Peckham | 14.582 | 9-29-88 | 14.582 | 22 |
| 19 | 1.11 | Q.C.T. | 7-13-88 | H. W. Peckham | H. W. Peckham | 14.582 | 9-29-88 | 14.582 | 22 |
| 20 | 1.11 | Q.C.T. | 7-13-88 | H. W. Peckham | H. W. Peckham | 14.582 | 9-29-88 | 14.582 | 22 |
| 21 | 1.11 | Q.C.T. | 7-13-88 | H. W. Peckham | H. W. Peckham | 14.582 | 9-29-88 | 14.582 | 22 |
| 22 | 1.11 | Q.C.T. | 7-13-88 | H. W. Peckham | H. W. Peckham | 14.582 | 9-29-88 | 14.582 | 22 |
| 23 | 1.11 | Q.C.T. | 7-13-88 | H. W. Peckham | H. W. Peckham | 14.582 | 9-29-88 | 14.582 | 22 |
| 24 | 1.11 | Q.C.T. | 7-13-88 | H. W. Peckham | H. W. Peckham | 14.582 | 9-29-88 | 14.582 | 22 |
| 25 | 1.11 | Q.C.T. | 7-13-88 | H. W. Peckham | H. W. Peckham | 14.582 | 9-29-88 | 14.582 | 22 |
| 26 | 1.11 | Q.C.T. | 7-13-88 | H. W. Peckham | H. W. Peckham | 14.582 | 9-29-88 | 14.582 | 22 |
| 27 | 1.11 | Q.C.T. | 7-13-88 | H. W. Peckham | H. W. Peckham | 14.582 | 9-29-88 | 14.582 | 22 |
| 28 | 1.11 | Q.C.T. | 7-13-88 | H. W. Peckham | H. W. Peckham | 14.582 | 9-29-88 | 14.582 | 22 |
| 29 | 1.11 | Q.C.T. | 7-13-88 | H. W. Peckham | H. W. Peckham | 14.582 | 9-29-88 | 14.582 | 22 |
| 30 | 1.11 | Q.C.T. | 7-13-88 | H. W. Peckham | H. W. Peckham | 14.582 | 9-29-88 | 14.582 | 22 |
| 31 | 1.11 | Q.C.T. | 7-13-88 | H. W. Peckham | H. W. Peckham | 14.582 | 9-29-88 | 14.582 | 22 |
| 32 | 1.11 | Q.C.T. | 7-13-88 | H. W. Peckham | H. W. Peckham | 14.582 | 9-29-88 | 14.582 | 22 |

STATION MAP LAND SUPERIOR DOUGLAS CO. WIS. L. SUPERIOR TRM. & TRNSFR. RY. CO. STATION MAP LAND SUPERIOR DOUGLAS CO. WIS. L. SUPERIOR TRM. & TRNSFR. RY. CO.



| Report | Outstanding | Kind of | Date of | Grantor | Grantee | Recorded | Area | Section | Remarks |
|--------|-------------|----------|---------|------------------------------|---------------------|----------|--------|---------|--|
| No. | | Interest | | | | Date | Acres | No. | |
| 1 | 29 | W.L. | 11-1-36 | Land & River Improvement Co. | L.S.T. & T.P.R. Co. | 8-11-68 | 3.00 | 15 | Grant right to cross Lake Superior River at grade |
| 2 | 29 | W.L. | 6-7-59 | Land & River Improvement Co. | " | 8-11-68 | 1.74 | 15 | Grant right to cross R/W of Lake Superior at grade |
| 3 | 41 | W.L. | 11-1-59 | Dutch Sport Line Ry. | " | " | none | 15 | Grant right to cross R/W of Lake Superior at grade |
| 4 | 45 | W.L. | 7-17-58 | Land & River Improvement Co. | " | 9-27-68 | 2.55 | 15 | Grant right to cross R/W of Lake Superior at grade |
| 5 | 45 | W.L. | 11-1-58 | Land & River Imp. Co. | " | 11-23-60 | 3.19 | 15 | Grant right to cross R/W of Lake Superior at grade |
| 6 | 45 | W.L. | 6-15-59 | Land and River Imp. Co. | " | 7-8-59 | 3.19 | 15 | Grant right to cross R/W of Lake Superior at grade |
| 7 | 46 | W.L. | 6-15-59 | " | " | 8-25-55 | 42.300 | 15 | Grant right to cross R/W of Lake Superior at grade |
| 8 | 46 | W.L. | 6-15-59 | " | " | 8-25-55 | 42.300 | 15 | Grant right to cross R/W of Lake Superior at grade |
| 9 | 46 | W.L. | 6-15-59 | " | " | 8-25-55 | 42.300 | 15 | Grant right to cross R/W of Lake Superior at grade |
| 10 | 46 | W.L. | 6-15-59 | " | " | 8-25-55 | 42.300 | 15 | Grant right to cross R/W of Lake Superior at grade |
| 11 | 48 | W.L. | 6-15-59 | " | " | 8-25-55 | 42.300 | 15 | Grant right to cross R/W of Lake Superior at grade |



STATION MAP - LANDS SUPERIOR
 DONALDSON CO., WIS.

STATION No. 101
 of
 to Survey Station
 Valuation Engineer

SEC. 16, T. 49 N., R. 14 W.
 SEC. 15, T. 49 N., R. 14 W.

STANDARD OIL CO.

U.S. CAST IRON PIPE & FOUNDRY CO.

South Line Approach to South Superior

GOVT.

