



LEHIGH VALLEY
COAL DOCK
CO.

TOWER BAY

WAREHOUSE
ADAMANT.

SALT STOREHOUSE

REPUBLIC ELEVATOR CO.
ELEVATOR

FREEMAN MILL
STORE-HOUSE

MINCHY MILL
ELEVATOR

BAG FACTORY

ENGINESUPR.
ADD. COS.

SLIP

SLIP

SLIP

S. G. R. M. O. H.

ST. LOUIS

RIVER. →

GOVERNMENT HARBOR LINE S. 0° 10' 15" W.

GOVT. LOT #4.

GOVT. LOT #3.

M. S. P. & S. M. RY. ORE DOCK.

WINTER

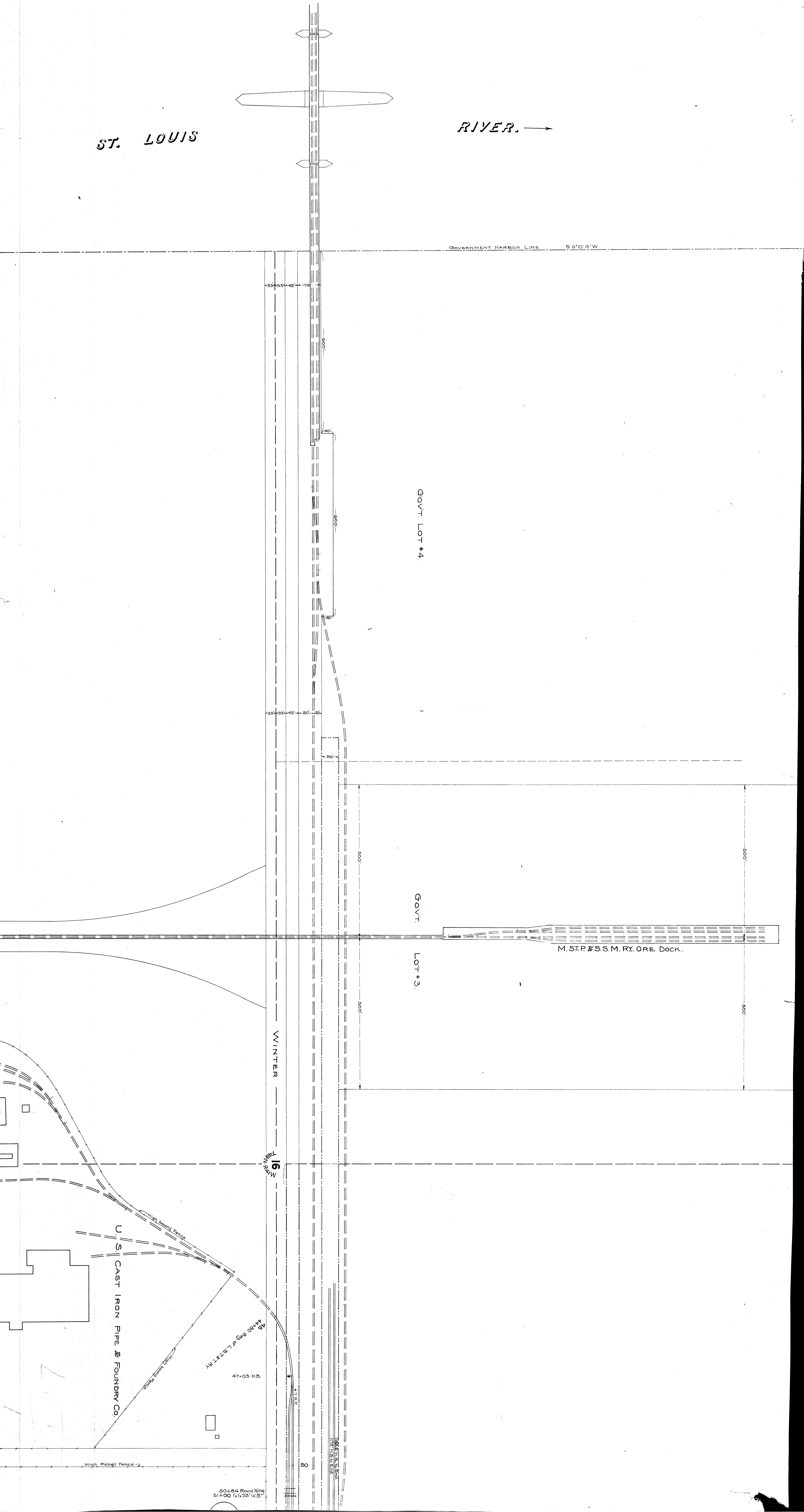
16 M. TERRY

U.S. CAST IRON PIPE & FOUNDRY CO.

47+03 H.B.

High Picket Fence

50+84 Reed Xing
51+00 S. 15° 25' W. 6"





NO. ELEVENTH

NO. TWENTH

NO. THIRTIETH

NO. FORTIETH

NO. FIFTIETH

NO. SIXTH

NO. SEVENTH

NO. EIGHTH

NO. NINTH

NO. TENTH

NO. ELEVENTH

NO. SIXTH

NO. SEVENTH

NO. EIGHTH

NO. NINTH

NO. TENTH

NO. ELEVENTH

NO. SIXTH

NO. SEVENTH

NO. EIGHTH

NO. NINTH

NO. TENTH

NO. ELEVENTH

NO. SIXTH

NO. SEVENTH

NO. EIGHTH

NO. NINTH

NO. TENTH

NO. ELEVENTH

NO. SIXTH

NO. SEVENTH

NO. EIGHTH

NO. NINTH

NO. TENTH

NO. ELEVENTH

NO. SIXTH

NO. SEVENTH

NO. EIGHTH

NO. NINTH

NO. TENTH

NO. ELEVENTH

NO. SIXTH

NO. SEVENTH

NO. EIGHTH

NO. NINTH

NO. TENTH

NO. ELEVENTH

NO. SIXTH

NO. SEVENTH

NO. EIGHTH

NO. NINTH

NO. TENTH

NO. ELEVENTH

NO. SIXTH

NO. SEVENTH

NO. EIGHTH

NO. NINTH

NO. TENTH

NO. ELEVENTH

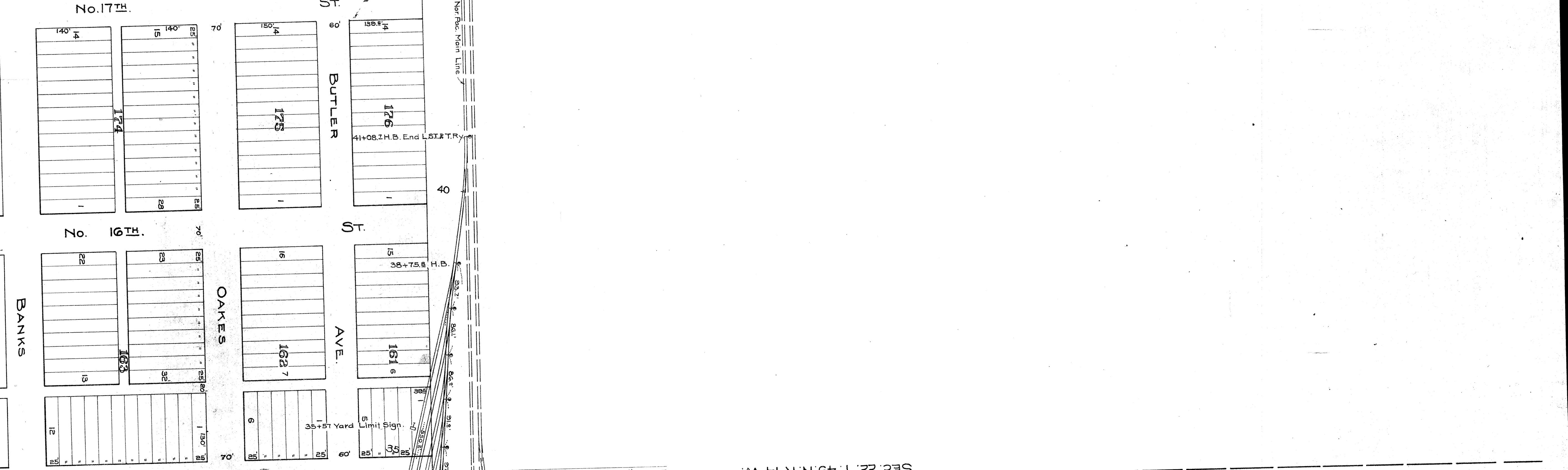
NO. ELEVENTH

NO. TWENTH

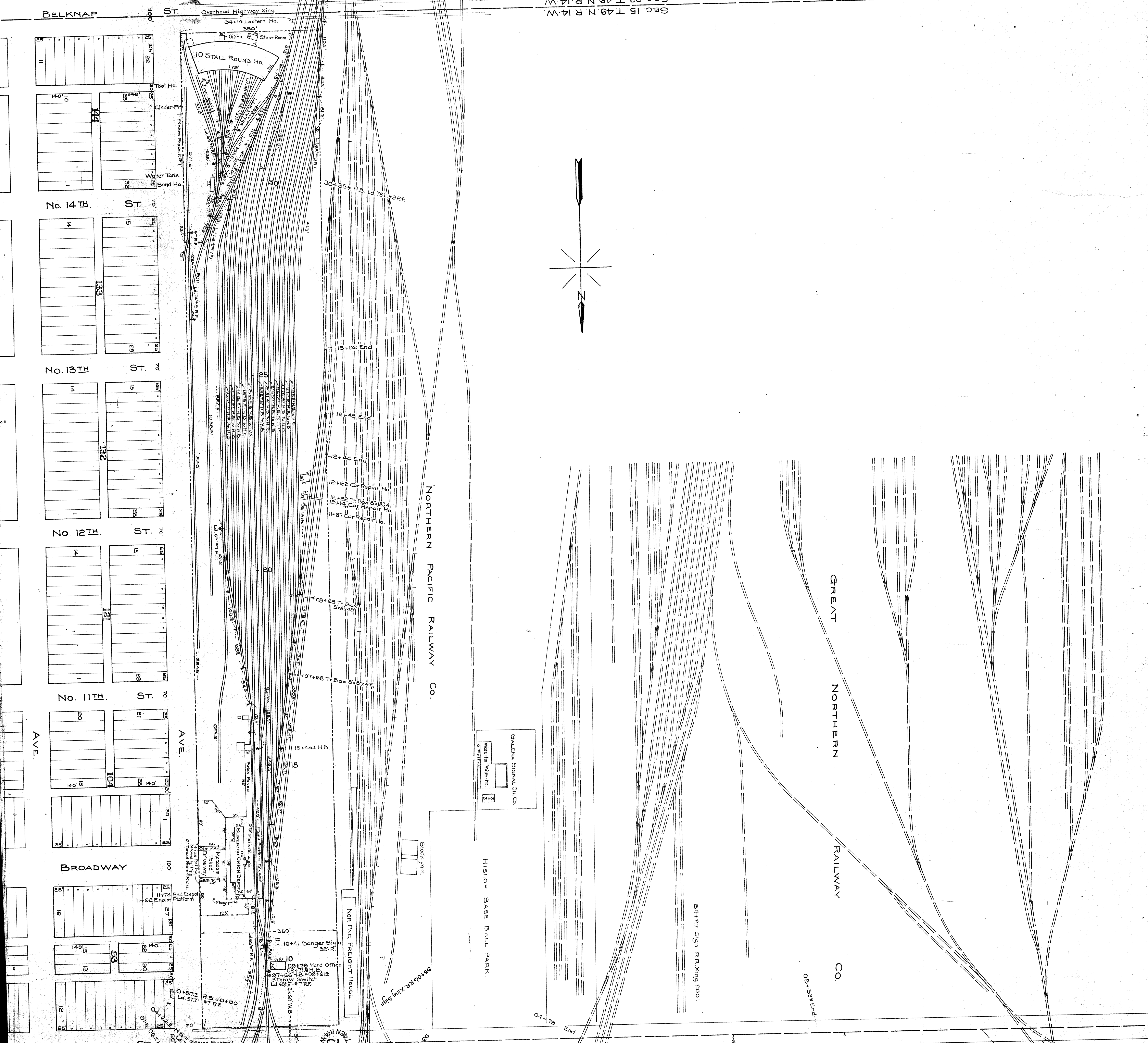
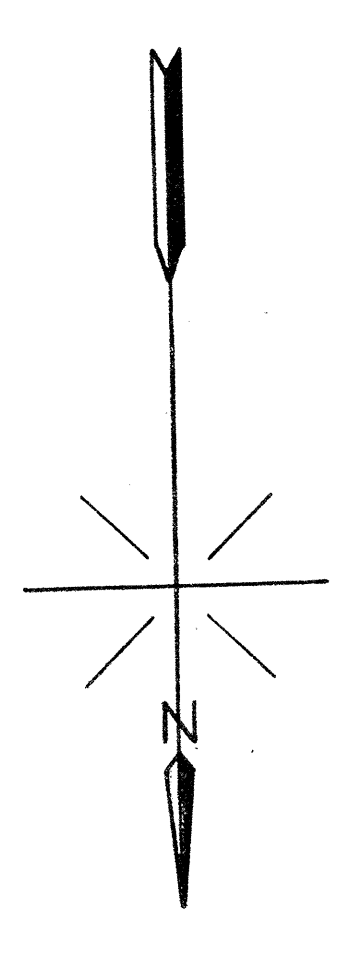
NO. THIRTIETH

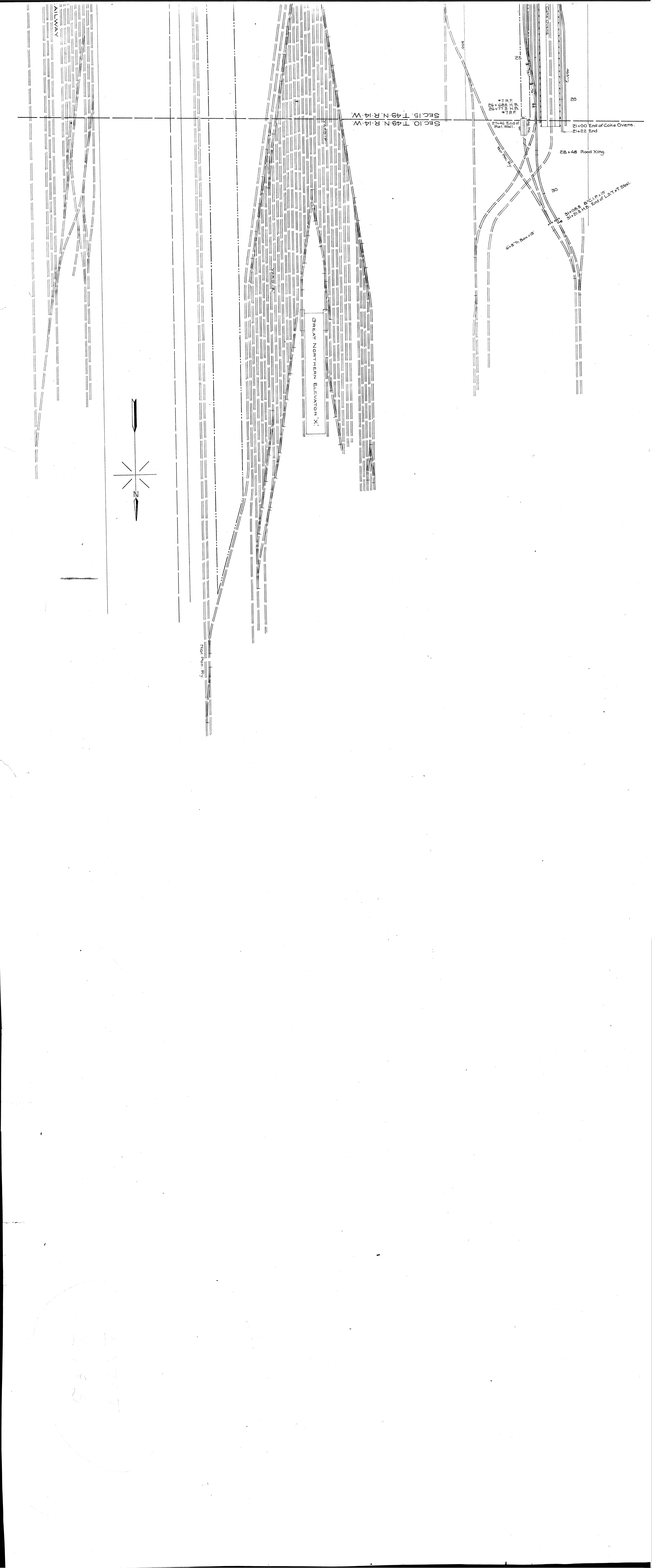
NO. FORTIETH

NO. FIFTIETH



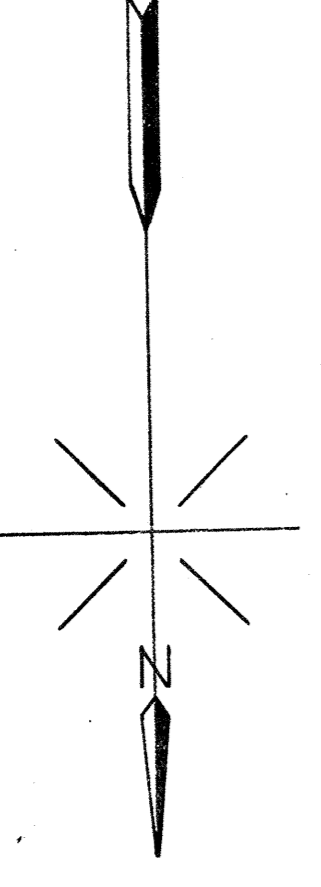
Sec 15 T 49 N R 14 W
 Sec 22 T 49 N R 14 W





SEC. 15 T. 49 N. R. 14 W.
 SEC. 10 T. 49 N. R. 14 W.

GREAT NORTHERN ELEVATOR "X"



21+00 End of Coke Ovens.
 21+22 End
 28+48 Road Xing.
 30
 31+08.8 B.C.I.P. + 15
 31+01.6 H.P. End of L.S.T. #1 Steel.
 6" x 8" T. Box + 15
 27+46 End of Ret. Wall.
 #7 R.F.
 26+28.8 H.P.
 26+77.3 H.P.
 #7 R.F.

Norfolk Ry

1

45000
 12100



LAMBORN

WEEKS

CLOUGH

SIXTH

FISHER

CATLIN

BIRCH

MAIN

SPRUCE

PINE

ELM

HILL

ST.

ST.

ST.

ST.

ST.

AVE.

AVE.

AVE.

AVE.

AVE.

AVE.

AVE.

AVE.

AVE.

AVE.

AVE.

AVE.

AVE.

AVE.

AVE.

AVE.

AVE.

ST.

ST.

ST.

ST.

ST.

ST.

ST.

ST.

ST.

ST.

ST.

ST.

ST.

ST.

ST.

ST.

ST.

LOT 1

LOT 2

LOT 3

LOT 4

LOT 5

LOT 6

LOT 7

LOT 8

LOT 9

LOT 10

LOT 11

LOT 12

LOT 13

LOT 14

LOT 15

LOT 16

LOT 17

SLIP

SLIP

SLIP

SLIP

SLIP

SLIP

SLIP

SLIP

SLIP

SLIP

SLIP

SLIP

SLIP

SLIP

SLIP

SLIP

SLIP

DRY DOCK

DRY DOCK

DRY DOCK

DRY DOCK

DRY DOCK

DRY DOCK

DRY DOCK

DRY DOCK

DRY DOCK

DRY DOCK

DRY DOCK

DRY DOCK

DRY DOCK

DRY DOCK

DRY DOCK

DRY DOCK

DRY DOCK

PHILADELPHIA & READING COAL CO.

PHILADELPHIA & READING COAL CO.

PHILADELPHIA & READING COAL CO.

PHILADELPHIA & READING COAL CO.

PHILADELPHIA & READING COAL CO.

PHILADELPHIA & READING COAL CO.

PHILADELPHIA & READING COAL CO.

PHILADELPHIA & READING COAL CO.

PHILADELPHIA & READING COAL CO.

PHILADELPHIA & READING COAL CO.

PHILADELPHIA & READING COAL CO.

PHILADELPHIA & READING COAL CO.

PHILADELPHIA & READING COAL CO.

PHILADELPHIA & READING COAL CO.

PHILADELPHIA & READING COAL CO.

PHILADELPHIA & READING COAL CO.

PHILADELPHIA & READING COAL CO.

Sec. 13 T49N R14W

Sec. 14 T49N R14W

Sec. 15 T49N R14W

Sec. 16 T49N R14W

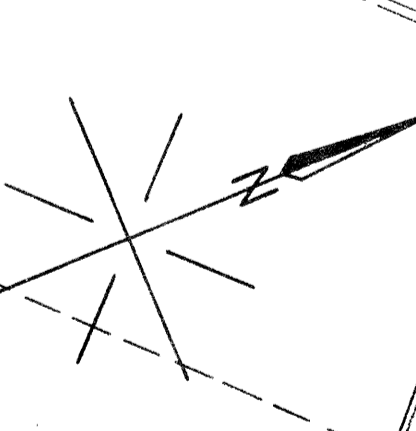
Sec. 17 T49N R14W

POCKET

BAY

OR

SUPERIOR



STANDARD OIL CO.

REISS COAL CO.

REISS COAL CO.

BERWIND FUEL CO. TRACKS

BERWIND FUEL CO. DOCK.

AMERICAN GRASS TWINE CO.

BERWIND FUEL CO. TRACKS

STANDARD OIL CO. OIL SHED.

STANDARD OIL CO.

STANDARD OIL CO. TRACKS

AJAX
PAPER CO.

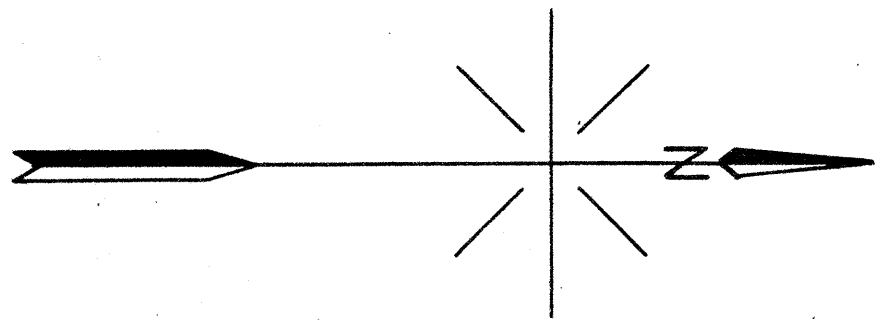
GREAT NORTHERN RAILWAY CO.

NORTHERN PACIFIC RAILWAY CO.

STREET

MARYLAND STREET

STOTT BRIQUET CO.



HB. 0+00
0+00 H.B.

60+18 H.B.
60+31 H.B.
60+62 W.D.
60+124

61+83 Road Xing

63+25 R.R. Xing
200 Sign

370

667.87

122.5

33+53 42+50

72+14 R.R. Xing
200 Sign

73+13 Road Xing

74+05 W.B. 1x12x14
74+26 G.N. Ry Xing
74+51 End of Tr.

75

76+22 Sign, RR Xing, 200'

76+73 W.B. 3.58x90

180

300

0+773 H.B.

210

56

60

65

70

75

80

85

90

95

100

105

110

115

120

125

130

135

140

145

150

155

160

165

170

175

180

185

190

195

200

205

210

215

220

225

230

235

240

245

250

255

260

265

2
75-77