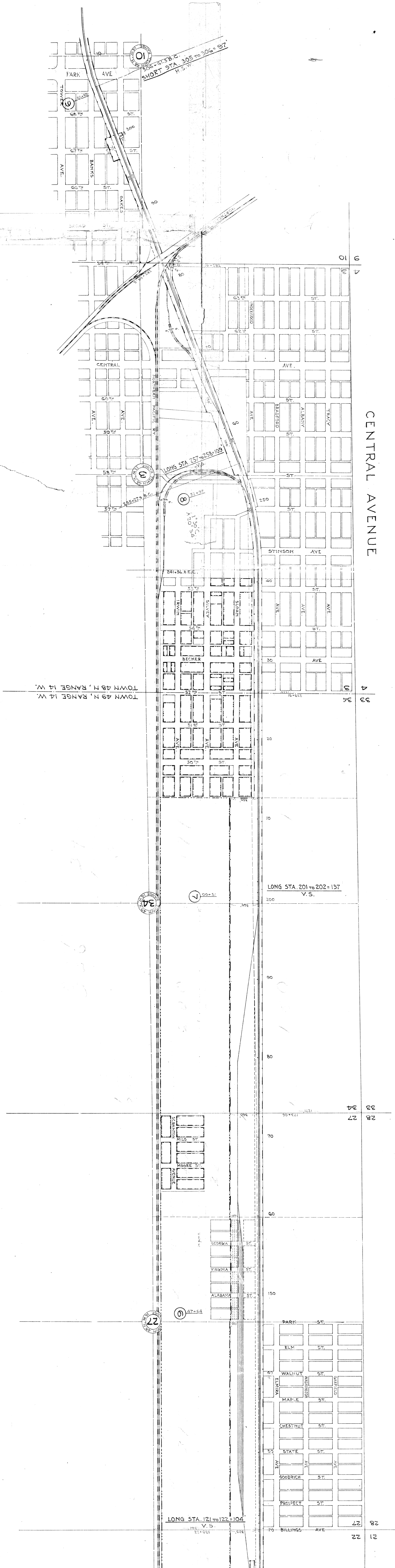


Superseded Right of Way Map 15-0-40

CENTRAL AVENUE



SHORT STA. 305 to 306 = 97
H.S.W.
10

LONG STA. 257 to 258 = 109
130' S.C.
100' S.C.
3

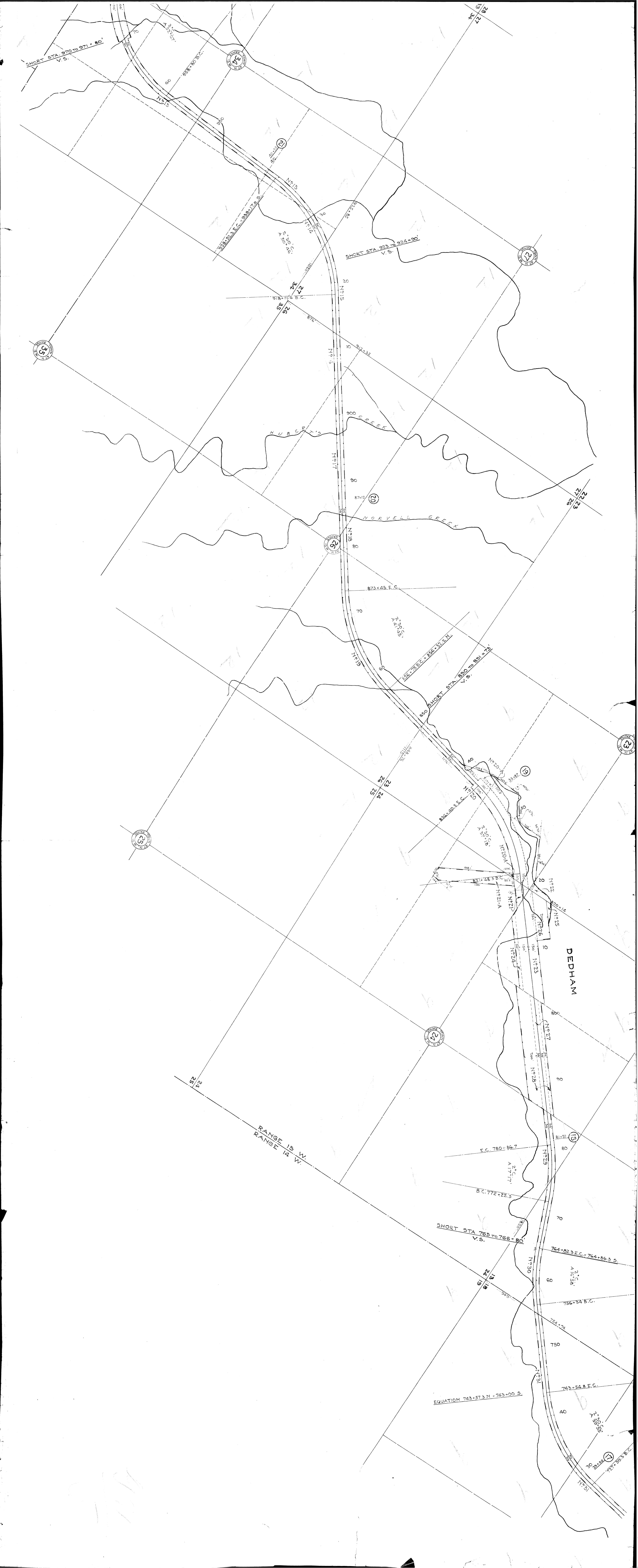
LONG STA. 201 to 202 = 137
V.S.
34

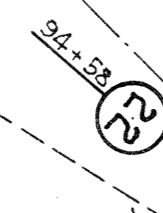
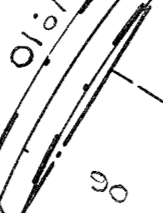
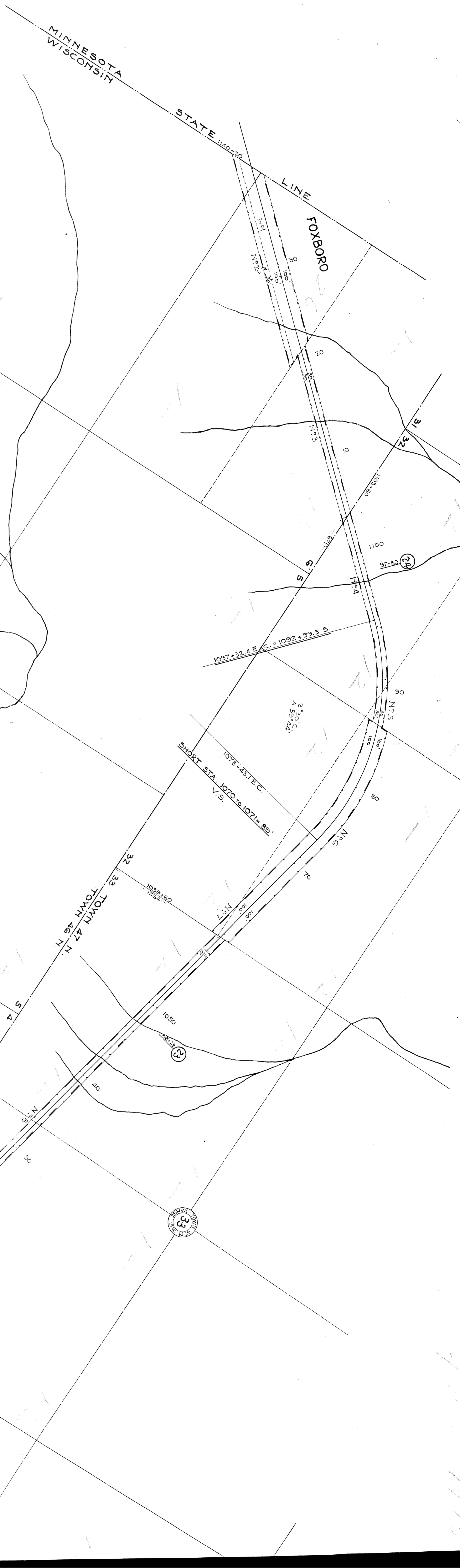
LONG STA. 121 to 122 = 104
V.S.
22

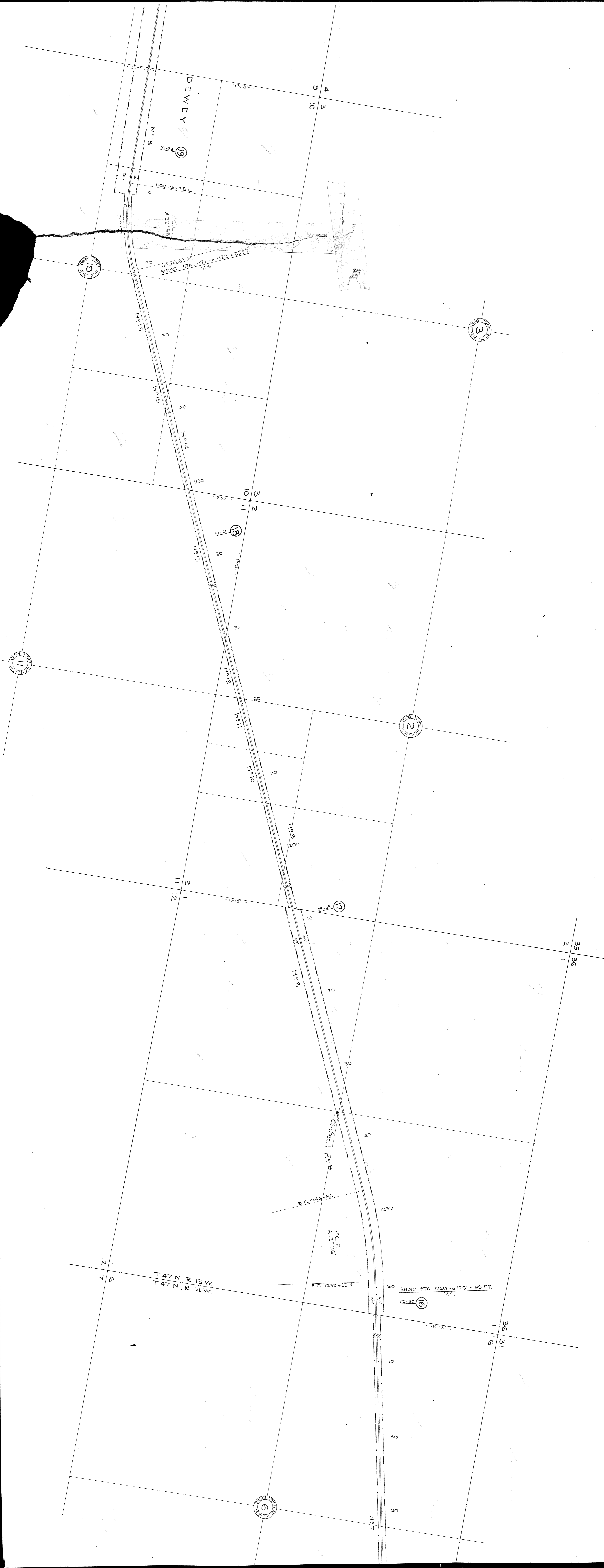
TOWN 49 N, RANGE 14 W.
TOWN 48 N, RANGE 14 W.

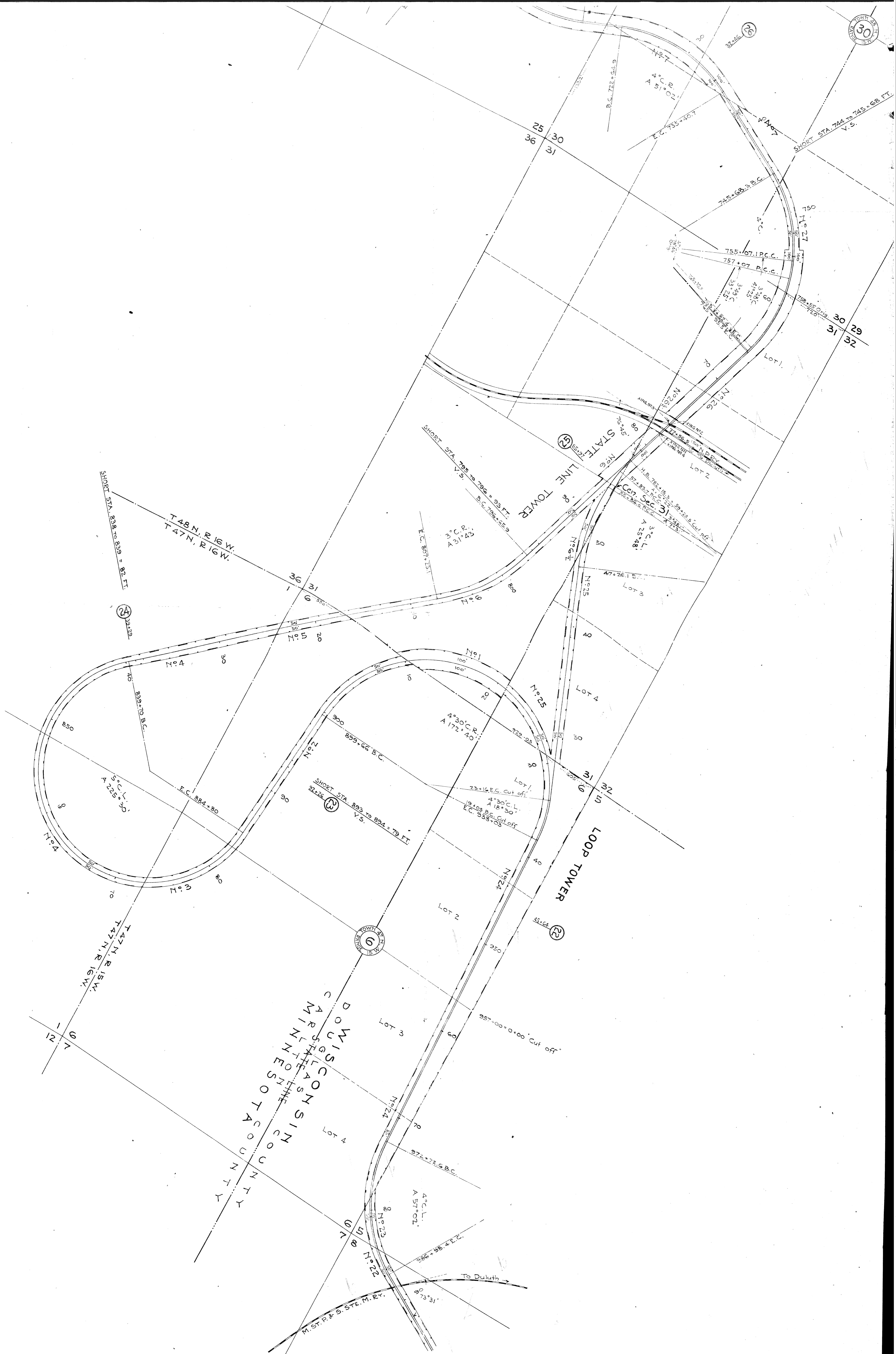
0 1
2
3
4
5
6
7
8
9
10
11
12
13
14
15
16
17
18
19
20
21
22
23
24
25
26
27
28
29
30
31
32
33
34
35
36
37
38
39
40
41
42
43
44
45
46
47
48
49
50
51
52
53
54
55
56
57
58
59
60
61
62
63
64
65
66
67
68
69
70
71
72
73
74
75
76
77
78
79
80
81
82
83
84
85
86
87
88
89
90
91
92
93
94
95
96
97
98
99
100











B103-11





Superseded Maps are: P.421, P.422, P.423

HARBOR LINE APPROVED BY SEC. OF WAR NOV. 17 1885
GOVT. BASE LINE SUPERIOR HARBOR BASIN

ALLOUEZ BAY

