

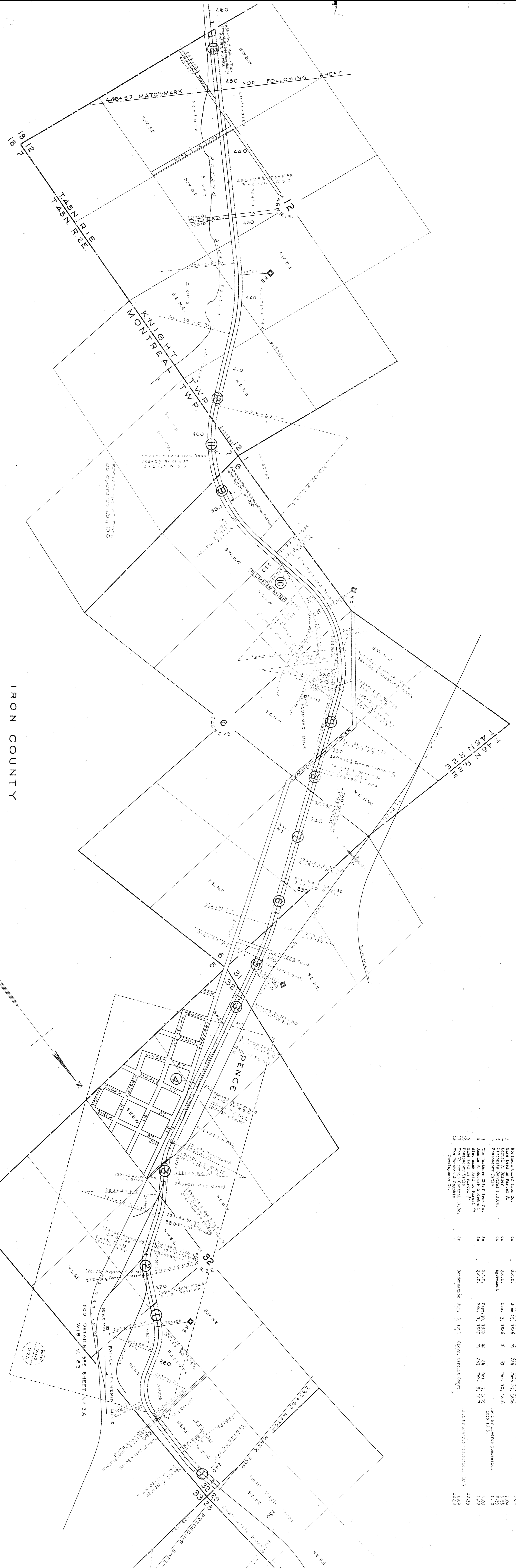
NO.	SECTION	DATE	RECORD	DATE	REMARKS	A.B.P.
1	The Pontiac & Ogish Development Company.	July 7, 1887	Not recorded	Feb. 11, 1889		6.06
2	The Pontiac & Ogish Development Company.	June 29, 1886	38	July 10, 1886	242.99 Ac. bought with Forest 28 acres sold.	1.03
3	See Deeds on parcel 22.	May 13, 1886	27	June 17, 1886		1.03
4	See Deeds on parcel 22.	Dec 15, 1886	24	Dec. 23, 1886		3.55
5	The Rosser Iron Mining Co.	June 23, 1886	21	July 31, 1886		3.52
6	See Deeds on parcel 22.	Oct. 2, 1886	21	Oct. 7, 1886		3.52
7	See Deeds on parcel 22.	Jan 31, 1893	1	July 21, 1893		3.52
8	See Deeds on parcel 22.	Apr 25, 1893	1	July 21, 1893		3.52
9	See Deeds on parcel 22.	July 26, 1886	21	July 26, 1886		3.52
10	See Deeds on parcel 22.	Jan. 7, 1887	21	Feb. 23, 1887		3.52
11	See Deeds on parcel 22.	June 19, 1886	21	June 23, 1886		3.52
12	See Deeds on parcel 22.	Jan 1, 1887	21	Jan 26, 1887		3.52
13	See Deeds on parcel 22.	Jan 1, 1887	21	Jan 26, 1887		3.52
14	See Deeds on parcel 22.	Jan 1, 1887	21	Jan 26, 1887		3.52
15	See Deeds on parcel 22.	Jan 1, 1887	21	Jan 26, 1887		3.52

State of Illinois,
County of Cook,
I, the undersigned, officer of the Chicago and North Western Railway do hereby certify that this is a correct map in a series of 2 primary sheets and 4 supplemental sheets of said railway from survey station 2-1-90 to survey station 210-0-00. ASHLAND DIVISION, State of WISCONSIN prepared from the records of said company.

Correct
Valuation Engineer

Subscribed and sworn to before me, this 1st day of February 1917,
Notary Public in and for the
County of Cook
State of Illinois

RIGHT OF WAY AND TRACK MAP
CHICAGO AND NORTH-WESTERN RAILWAY
OPERATED BY THE
C.R. & N.W. RY. CO.
ASHLAND DIVISION
HURLEY, WIS. TO OSBORNE, WIS.
STA. 0+00 TO STA. 237+67
SCALE 1/4 IN. = 400 FT.
JUNE 30, 1917
OFFICE OF CHIEF ENGINEER
CHICAGO, ILL.



IRON COUNTY

NO.	REMARKS	DATE	BY	SCALE
1	Survey P. S. S. S. S.	July 10, 1886	W. H. S.	1/2" = 100'
2	Survey P. S. S. S. S.	July 17, 1886	W. H. S.	1/2" = 100'
3	Survey P. S. S. S. S.	July 17, 1886	W. H. S.	1/2" = 100'
4	Survey P. S. S. S. S.	July 17, 1886	W. H. S.	1/2" = 100'
5	Survey P. S. S. S. S.	July 17, 1886	W. H. S.	1/2" = 100'
6	Survey P. S. S. S. S.	July 17, 1886	W. H. S.	1/2" = 100'
7	Survey P. S. S. S. S.	July 17, 1886	W. H. S.	1/2" = 100'
8	Survey P. S. S. S. S.	July 17, 1886	W. H. S.	1/2" = 100'
9	Survey P. S. S. S. S.	July 17, 1886	W. H. S.	1/2" = 100'
10	Survey P. S. S. S. S.	July 17, 1886	W. H. S.	1/2" = 100'
11	Survey P. S. S. S. S.	July 17, 1886	W. H. S.	1/2" = 100'
12	Survey P. S. S. S. S.	July 17, 1886	W. H. S.	1/2" = 100'

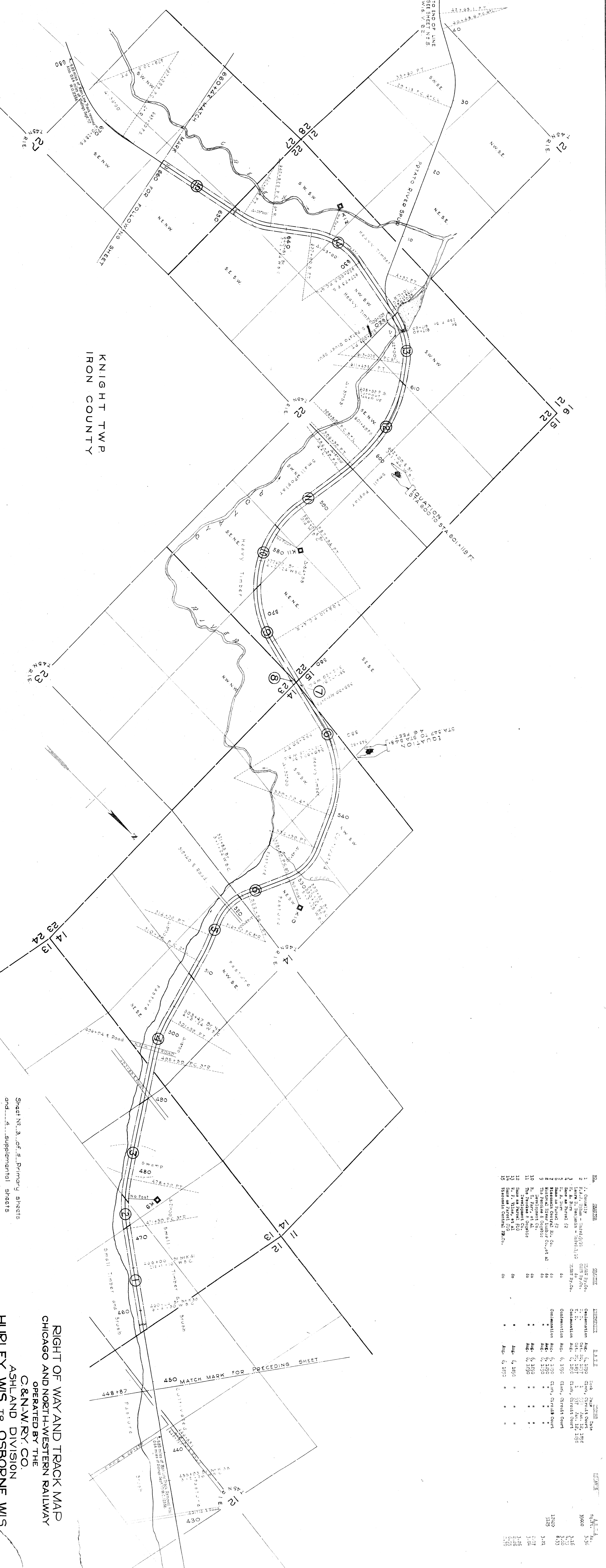
Sheet No. 2 of 5 Primary sheets
 and 4 supplemental sheets
 of C. & N. W. R. Y. from survey
 station 237+67 to survey station 448+67

RIGHT OF WAY AND TRACK MAP
 CHICAGO AND NORTH-WESTERN RAILWAY
 OPERATED BY THE
 C. & N. W. R. Y. CO.
 ASHLAND DIVISION
 HURLEY, WIS. TO OSBORNE, WIS.

STA. 237+67 TO STA. 448+67
 SCALE 1/2" = 400 FT.
 OFFICE OF CHIEF ENGINEER
 CHICAGO, ILL.

JUNE 30, 1917
 Valuation Engineer

NO.	NAME	DATE	REMARKS	AMOUNT	DATE	REMARKS	AMOUNT
1	Contract	1917/10	Contract	3000			
2	Contract	1917/10	Contract	116			
3	Contract	1917/10	Contract	3100			
4	Contract	1917/10	Contract	833			
5	Contract	1917/10	Contract	3121			
6	Contract	1917/10	Contract	2107			
7	Contract	1917/10	Contract	3100			
8	Contract	1917/10	Contract	3100			
9	Contract	1917/10	Contract	3100			
10	Contract	1917/10	Contract	3100			
11	Contract	1917/10	Contract	3100			
12	Contract	1917/10	Contract	3100			
13	Contract	1917/10	Contract	3100			
14	Contract	1917/10	Contract	3100			
15	Contract	1917/10	Contract	3100			



RIGHT OF WAY AND TRACK MAP
 CHICAGO AND NORTH-WESTERN RAILWAY
 OPERATED BY THE
 C.&N.W.RY. CO.
 ASHLAND DIVISION
 HURLEY, WIS. TO OSBORNE, WIS.
 STA. 448+87 TO STA. 600+42
 SCALE 1"=400 FT.
 JUNE 30, 1917.
 OFFICE OF CHIEF ENGINEER
 CHICAGO, ILL.

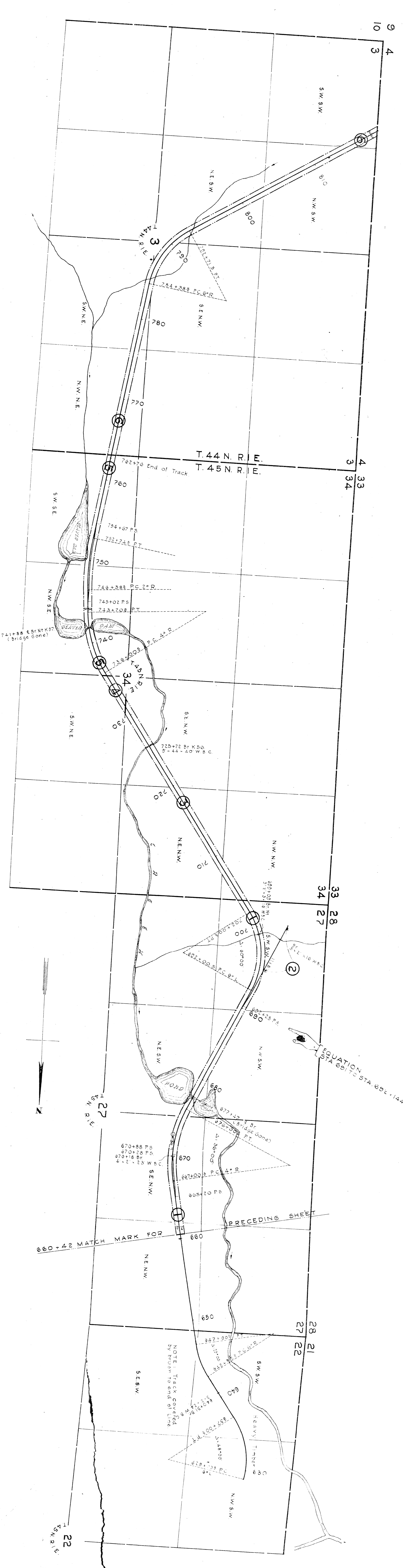
Sheet No. 3 of 5 Primary sheets
 and 4 supplemental sheets
 of C&N.W.RY. from survey
 station 448+87 to survey station 600+42

Valuation Engineer

Parted by D.D.O. Oct 25, 1918
 Traced by B.N.O. Nov 12, 1918
 Traced by D.S.O. Nov 22, 1918

3

NO.	SECTION	DATE	INSTRUMENT	DATE	PLAN	REMARKS
1	Passenger Table	40	Observation	Aug. 6, 1890	City, Circuit Court	Asst. Eng. 1890
2	Map of Survey of Land	40	Aug. 6, 1890			Asst. Eng. 1890
3	Map of Survey of Land	40	Aug. 6, 1890			Asst. Eng. 1890
4	Map of Survey of Land	40	Aug. 6, 1890			Asst. Eng. 1890
5	The Standard Central Office.	40	Aug. 6, 1890			Asst. Eng. 1890



KNIGHT TWP.
IRON COUNTY

RIGHT OF WAY AND TRACK MAP
CHICAGO AND NORTH-WESTERN RAILWAY

OPERATED BY THE
C. & N. W. RY. CO.

ASHLAND DIVISION
HURLEY, WIS. TO OSBORNE, WIS.

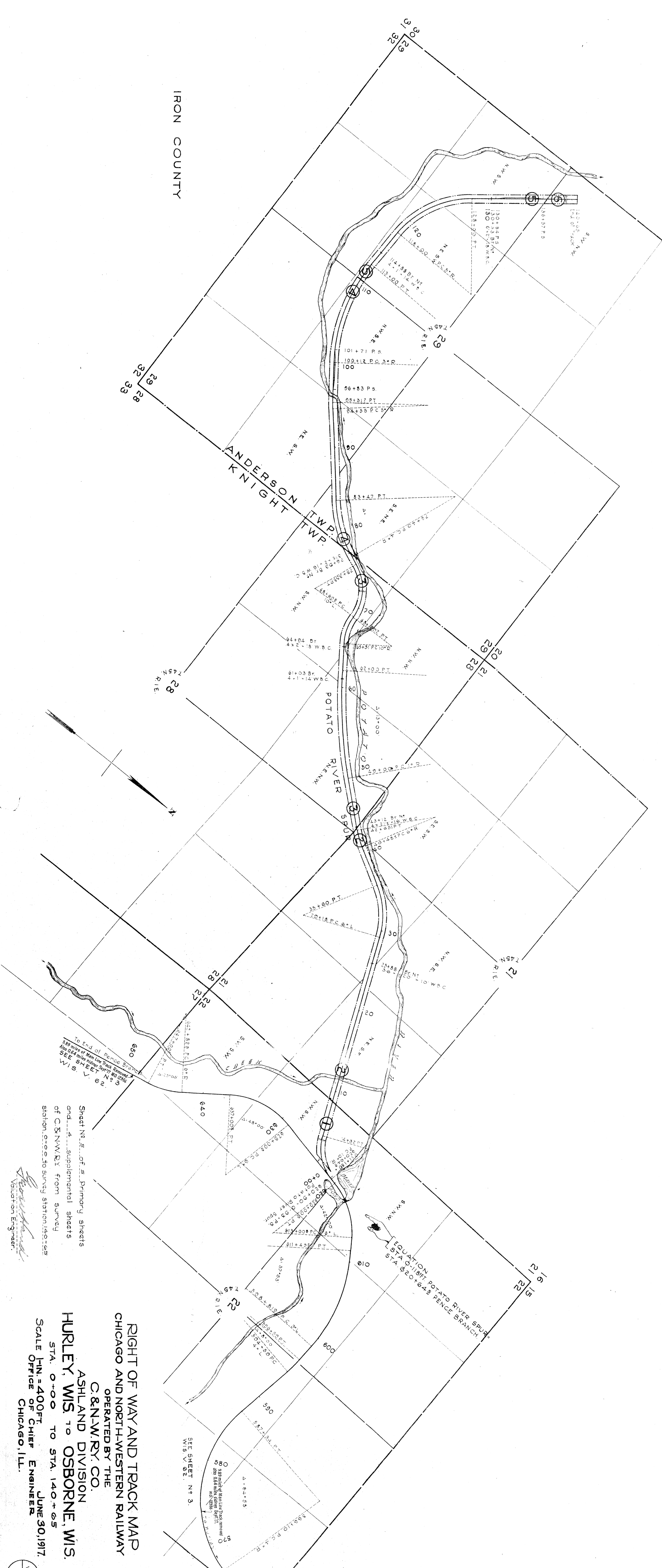
SCALE 1 IN. = 400 FT.
STA. 660+42 TO STA. 610+00

June 30, 1917
Office of Chief Engineer
Chicago, Ill.

Printed by D. B. D. Oct. 17, 1916
Checked by S. H. Q. New 14, 1916
Checked by D. B. D. New 23, 1916

W.S. V. 68
4

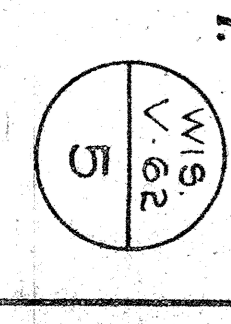
NO.	DATE	BY	REVISION
1	11.1.1917	W.M. HURLEY	Plan
2	1.1.1918	W.M. HURLEY	Plan
3	1.1.1918	W.M. HURLEY	Plan
4	1.1.1918	W.M. HURLEY	Plan
5	1.1.1918	W.M. HURLEY	Plan
6	1.1.1918	W.M. HURLEY	Plan



RIGHT OF WAY AND TRACK MAP
 CHICAGO AND NORTH-WESTERN RAILWAY
 OPERATED BY THE
 C. & N. W. RY. CO.
 ASHLAND DIVISION
 HURLEY, WIS. TO OSBORNE, WIS.
 STA. 0+00 TO STA. 140+65
 SCALE 1 IN. = 400 FT.
 JUNE 30, 1917.
 OFFICE OF CHIEF ENGINEER
 CHICAGO, ILL.

Sheet No. 5 of 5 Primary sheets
 and 4 supplemental sheets
 of C. & N. W. RY. from survey
 station 0+00 to survey station 140+65

W.M. Hurley
 Valuation Engineer



PRINTED BY
 CHICAGO, ILL.