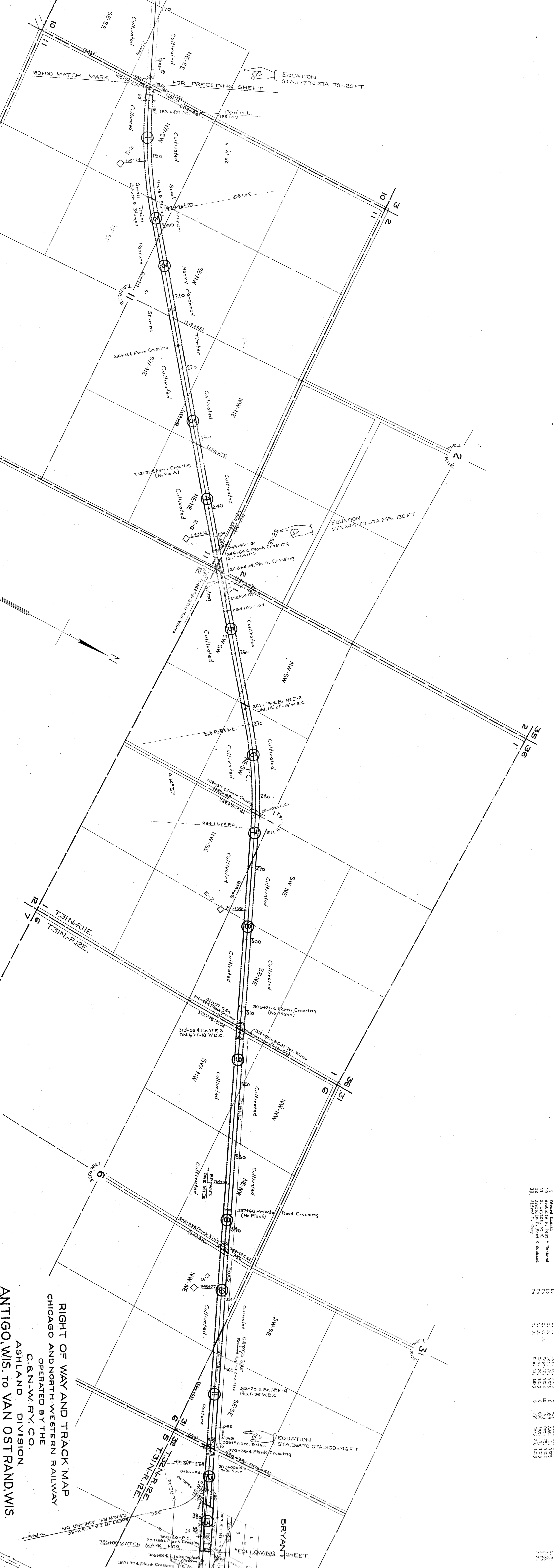


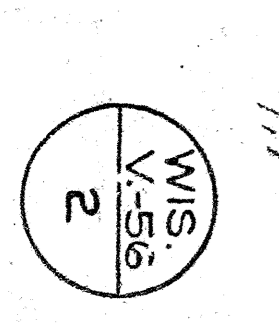
PLAN OF THE
 RAILWAY
 AS SHOWN
 IN THE
 RECORDS
 OF THE
 CHICAGO
 AND NORTH-WESTERN
 RAILWAY

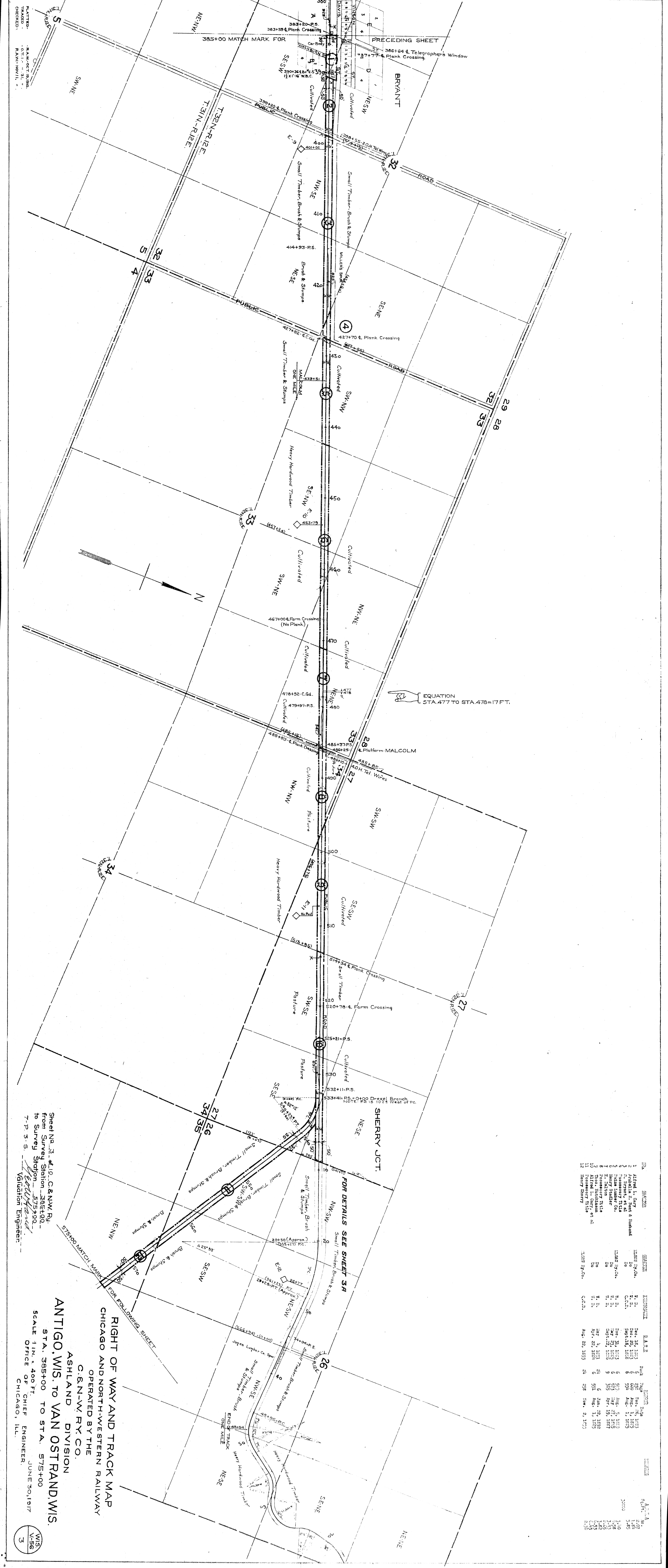


NO.	DESCRIPTION	DATE	BY	REVISION
1	Revised	1917	J. H. ...	1
2	Revised	1917	J. H. ...	2
3	Revised	1917	J. H. ...	3
4	Revised	1917	J. H. ...	4
5	Revised	1917	J. H. ...	5
6	Revised	1917	J. H. ...	6
7	Revised	1917	J. H. ...	7
8	Revised	1917	J. H. ...	8
9	Revised	1917	J. H. ...	9
10	Revised	1917	J. H. ...	10
11	Revised	1917	J. H. ...	11
12	Revised	1917	J. H. ...	12
13	Revised	1917	J. H. ...	13
14	Revised	1917	J. H. ...	14
15	Revised	1917	J. H. ...	15

RIGHT OF WAY AND TRACK MAP
 CHICAGO AND NORTH-WESTERN RAILWAY
 OPERATED BY THE
 C. & N. W. RY. CO.
 ASHLAND DIVISION
 ANTIGO, WIS. TO VAN OSTRAND, WIS.
 STA. 180+00 TO STA. 365+00
 SCALE 1 IN. = 400 FT.
 OFFICE OF CHIEF ENGINEER,
 CHICAGO, ILL.

Sheet No. 2, of J.O. C. & N.W. Ry.
 from Survey Station 180+00 to
 to Survey Station 365+00
 7-P. 3-5. Valuation Engineer





EQUATION
STA. 477 TO STA. 478 = 17 F.T.

FOR DETAILS SEE SHEET 3A

RIGHT OF WAY AND TRACK MAP
CHICAGO AND NORTH-WESTERN RAILWAY
OPERATED BY THE
C. & N. W. RY. CO.
ASHLAND DIVISION
ANTIGO, WIS. TO VAN OSTRAND, WIS.
STA. 385+00 TO STA. 575+00
SCALE 1 IN. = 400 FT.
OFFICE OF CHIEF ENGINEER
JUNE 30, 1917
CHICAGO, ILL.

NO.	SECTION	DATE	BY	REVISION
1	Alfred L. Cary	Dec. 16, 1903	6	1903
2	Arabella L. Cary & husband	Dec. 20, 1903	6	1903
3	Do	Sept. 15, 1904	6	1903
4	Do	Do	6	1903
5	Do	Do	6	1903
6	Do	Do	6	1903
7	Do	Do	6	1903
8	Do	Do	6	1903
9	Do	Do	6	1903
10	Do	Do	6	1903
11	Do	Do	6	1903
12	Do	Do	6	1903

PLATTED
TRADED
CHECKED
RAW-OCT. 1906
RAW-NOV. 11, 1906

WIS.
V-56
3

PLATTED - R.A.W.
 PRINTED - O.T.I.
 CHECKED - R.A.W.
 OCT 20 1916
 NOV 7 1916
 DEC 1 1916

Sheet No. 5 of 19, C & NW RJ
 from Survey Station 786420
 to Survey Station 997440
 T.P. 3-5
 Validation Engineer

RIGHT OF WAY AND TRACK MAP
CHICAGO AND NORTH-WESTERN RAILWAY
 OPERATED BY THE
C. & N.W. RY. CO.
ASHLAND DIVISION
ANTIGO, WIS. TO VAN OSTRAND, WIS.
 STA. 786420 TO STA. 997440
 SCALE 1 IN. = 400 FT.
 OFFICE OF CHIEF ENGINEER
 CHICAGO, ILL.
 JUNE 30 1917

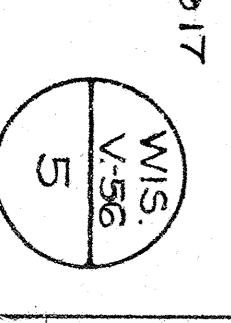


REVISIONS

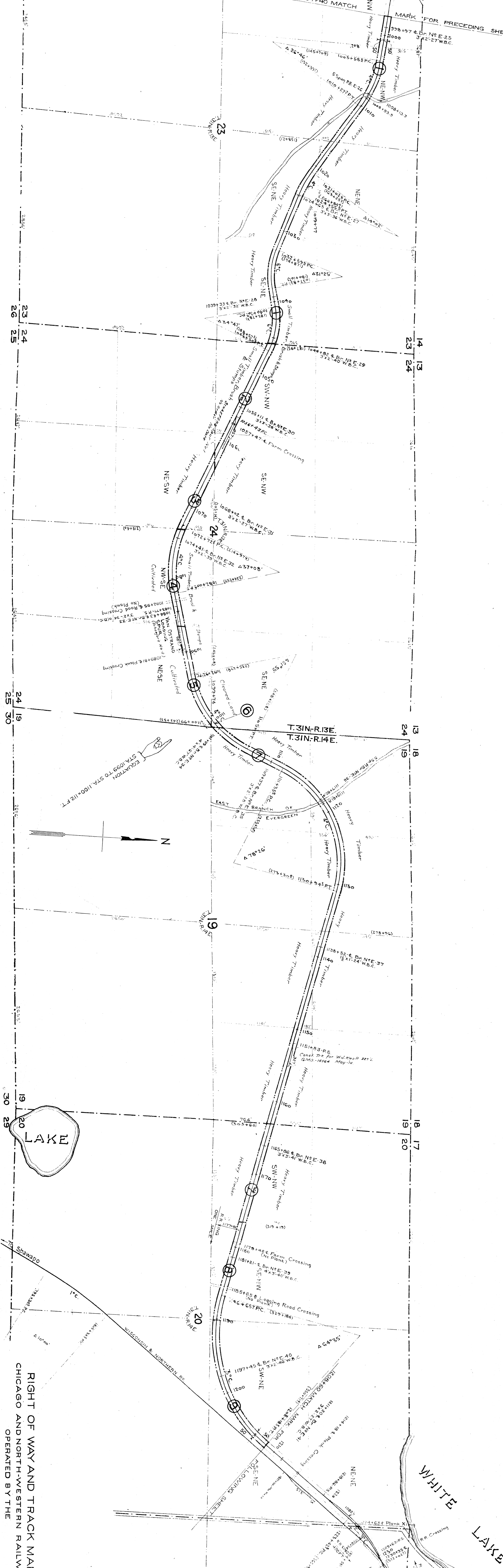
No.	Description	Date	By
1	As Shown	Aug. 17, 1916	R.A.W.
2	Henry Baker, et al.	Aug. 20, 1916	R.A.W.
3	Contract of Land Parcel 17	Aug. 20, 1916	R.A.W.
4	The Orchard Child Co.	Aug. 20, 1916	R.A.W.
5	Wm. Osterland, et al.	Aug. 20, 1916	R.A.W.
6	The Jernigan Roaden Farm Co.	Aug. 20, 1916	R.A.W.
7	Wm. Osterland, et al.	Aug. 20, 1916	R.A.W.
8	Wm. Osterland, et al.	Aug. 20, 1916	R.A.W.
9	Wm. Osterland, et al.	Aug. 20, 1916	R.A.W.
10	Wm. Osterland, et al.	Aug. 20, 1916	R.A.W.

DATE

Book	Page	Date
60	102	Aug. 17, 1916
60	103	Aug. 20, 1916
60	104	Aug. 20, 1916
60	105	Aug. 20, 1916
60	106	Aug. 20, 1916
60	107	Aug. 20, 1916
60	108	Aug. 20, 1916
60	109	Aug. 20, 1916
60	110	Aug. 20, 1916



PLANNED -
 TRACKED -
 CHECKED -
 RAW - OCT 25, 1916
 OCT 1 - NOV 5, 1916
 RAW - DEC 1, 1916



RIGHT OF WAY AND TRACK MAP
 CHICAGO AND NORTH-WESTERN RAILWAY
 OPERATED BY THE
 C. & N. W. RY. CO.
 ASHLAND DIVISION
ANTIGO, WIS. TO VAN OSTRAND, WIS.
 STA. 997+40 TO STA. 1208+60
 SCALE 1 IN. = 400 FT.
 OFFICE OF CHIEF ENGINEER
 CHICAGO, ILL.
 JUNE 30, 1917.

