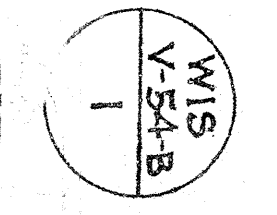


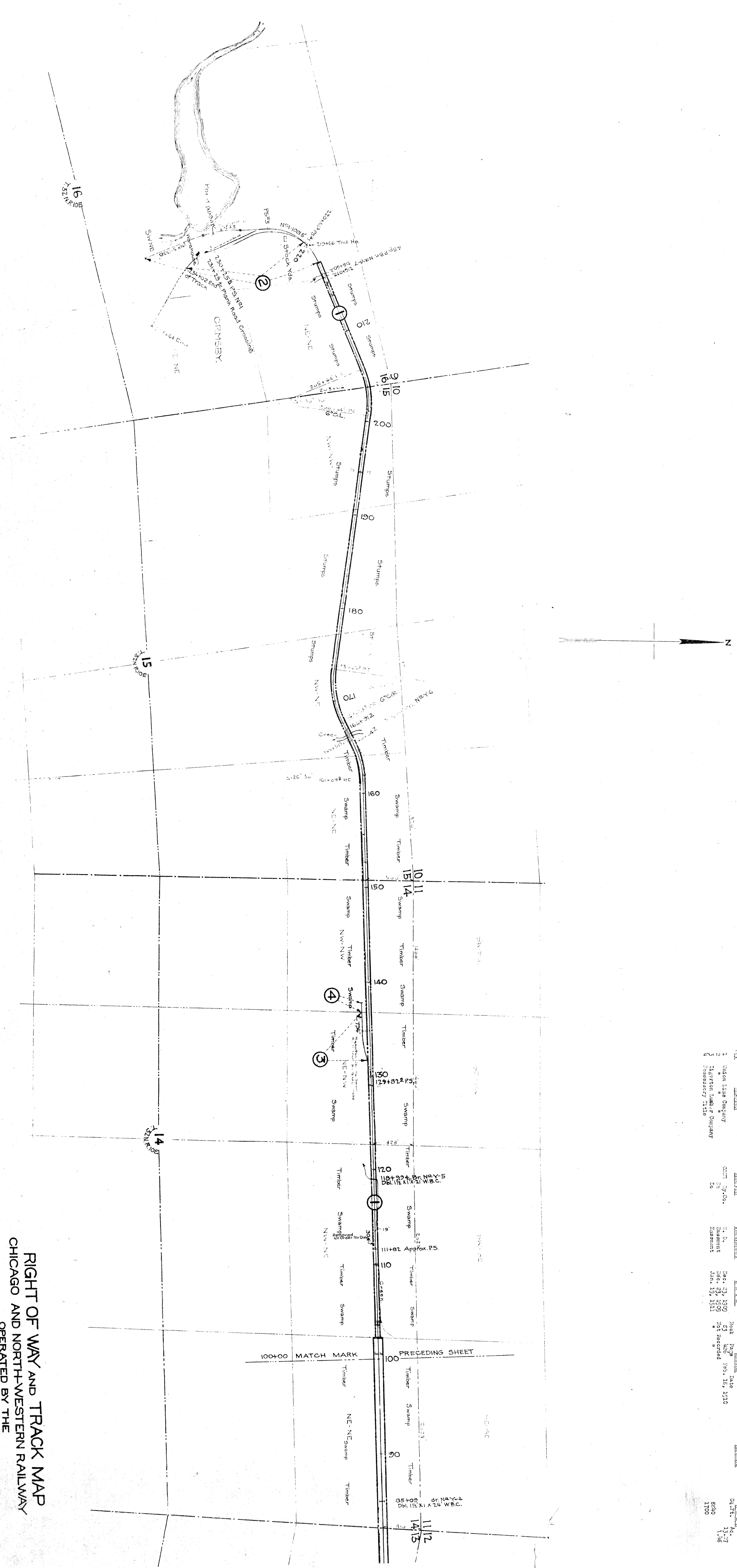
1. Nelson Lind Company, Chicago, Ill.
 2. Messervey 1110
 DATE Recd. 23, 1909
 BOOK 182
 PAGE 78, 12, 13, 10
 A. L. E. A. 25-56
 2375

State of Illinois
 County of Cook
 I, the undersigned, officer of the Chicago and North Western
 Railway do hereby certify that this is a correct map in a series
 of... primary sheets and... supplemental sheets of said
 railway from survey station 0+00... to survey station
 18+17... Ashland Division of Wisconsin... prepared
 from the records of said company.
 Correct and sworn to before me, this 10th day of April, 1917.
 Notary Public in Cook
 State of Illinois

RIGHT OF WAY AND TRACK MAP
 CHICAGO AND NORTH-WESTERN RAILWAY
 OPERATED BY THE
 C. & N. W. RY. CO.
 ASHLAND DIVISION
 ORMSBY LINE JCT. TO ORMSBY, WIS.
 SCALE 1-IN. = 400 FT.
 STA. 0+00 TO STA. 100+00
 JUNE 30, 1917.
 OFFICE OF CHIEF ENGINEER
 CHICAGO, ILL.

PLATTED - RAW NOV 21 1916
 TRACED - WCD NOV 25 1916
 CHECKED - RAW DEC 2 1916





NO.	DATE	BY	REVISION
1	Jan. 15, 1910	W. H. B.	Original
2	Jan. 15, 1911	W. H. B.	Revised
3	Jan. 15, 1911	W. H. B.	Revised
4	Jan. 15, 1911	W. H. B.	Revised

Sheet No. 2 of 2, C. & N.W. Ry.
 from Survey Station 109+00
 to Survey Station 134+02
 2-P. 0-5. *W. H. B.*
 Valuation Engineer

RIGHT OF WAY AND TRACK MAP
CHICAGO AND NORTH-WESTERN RAILWAY
 OPERATED BY THE
C. & N.W. RY. CO.
 ASHLAND DIVISION
ORMSBY LINE JCT. TO ORMSBY, WIS.
 STA. 100+00 TO STA. 134+02
 SCALE 1 IN. = 400 FT.
 OFFICE OF CHIEF ENGINEER
 JUNE 30, 1917
 CHICAGO, ILL.