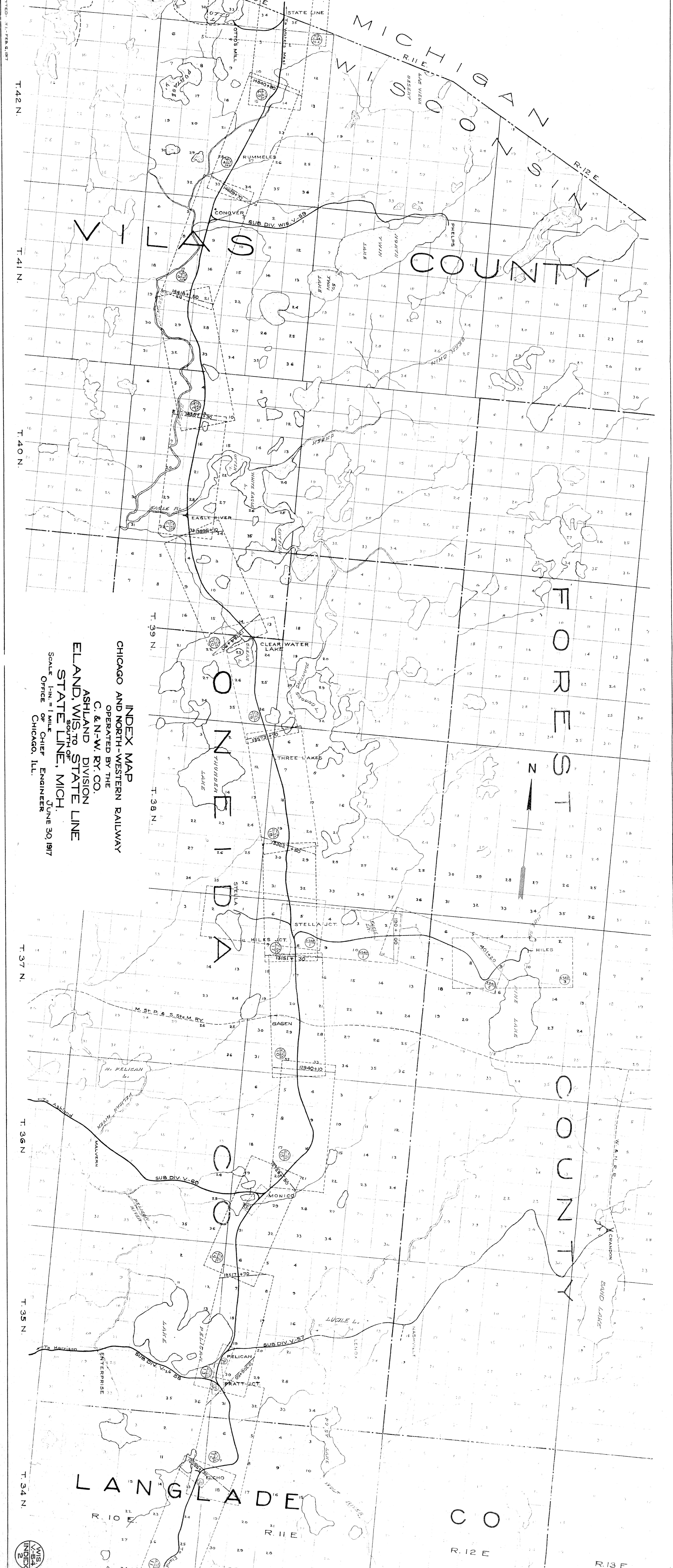


INDEX MAP  
 CHICAGO AND NORTH-WESTERN RAILWAY  
 OPERATED BY THE  
 C. & N.-W. RY. CO.  
 ASHLAND DIVISION  
 ELAND, WIS. TO STATE LINE  
 STATE LINE, MICH.  
 SOUTH OF  
 SCALE 1-IN. = 1 MILE.  
 OFFICE OF CHIEF ENGINEER  
 CHICAGO, ILL.  
 JUNE 30, 1917

WIS  
 V-54  
 INDEX

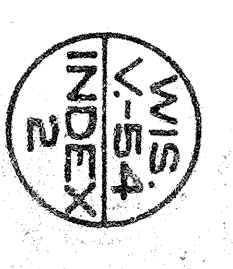




INDEX MAP  
 CHICAGO AND NORTH-WESTERN RAILWAY  
 OPERATED BY THE  
 C. & N.-W. RY. CO.  
 ASHLAND DIVISION  
 ELAND, WIS. TO STATE LINE  
 SOUTH OF  
 STATE LINE, MICH.  
 SCALE 1-IN. = 1 MILE  
 OFFICE OF CHIEF ENGINEER  
 CHICAGO, ILL. JUNE 30, 1917

T. 42 N.  
 T. 41 N.  
 T. 40 N.  
 T. 39 N.  
 T. 38 N.  
 T. 37 N.  
 T. 36 N.  
 T. 35 N.  
 T. 34 N.

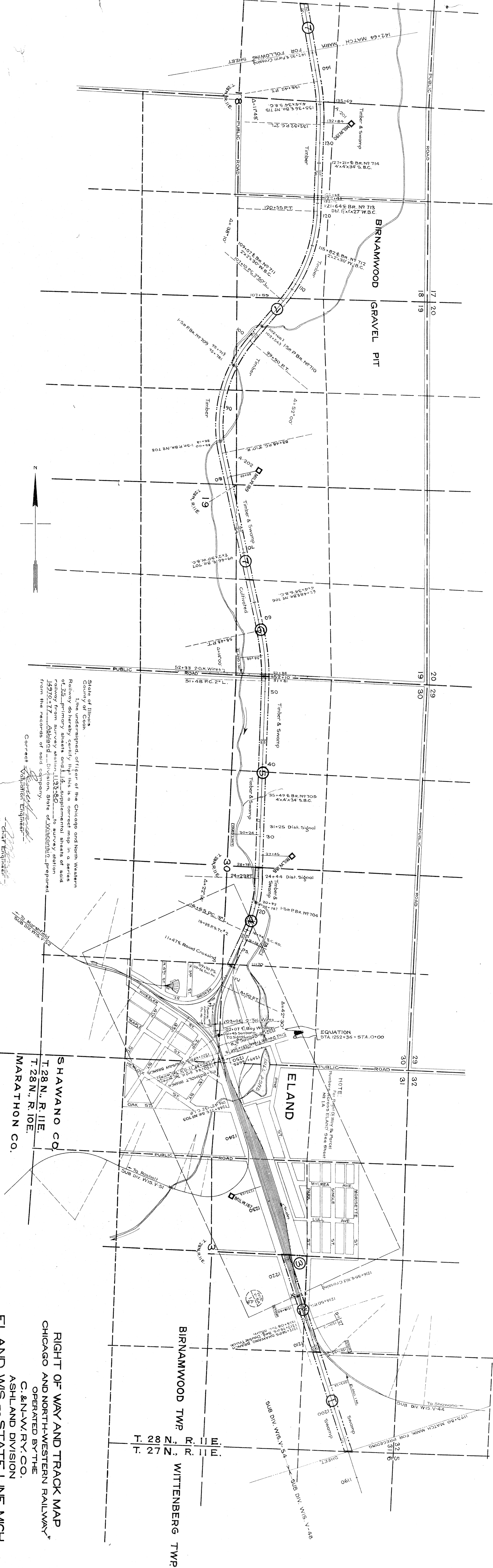
R. 10 E.  
 R. 11 E.  
 R. 12 E.  
 R. 13 E.





**BIRNAMWOOD GRAVEL PIT.**

Pit used 1892 to 1907  
Gravel of fair quality  
No stripping  
Gravel used in ballasting Main Line-Eland to Summit Lake  
23,000 cu yds of material removed.



NO.	STATION	DATE	REMARKS
1.	Lake Shore Traffic Co.	June 15, 1890	Peak
2.	Chicago Ry. Co.	June 25, 1895	Peak
3.	State of Ohio	July 31, 1892	Peak
4.	State of Ohio	July 31, 1892	Peak
5.	State of Ohio	July 31, 1892	Peak
6.	State of Ohio	July 31, 1892	Peak
7.	Lake Shore Traffic Co.	June 15, 1890	Peak

State of Illinois  
County of Cook  
I, the undersigned, officer of the Chicago and North Western Railway do hereby certify that this is a correct map in a series of 125 primary sheets and 14 supplemental sheets of said railway from survey station 1193+80 to survey station 14970+17, Ashland Division, State of Wisconsin, prepared from the records of said company.

Correct Valuation Engineer  
*[Signature]*

Subscribed and sworn to before me, this 17th day of April, 1917  
By me, *[Signature]* Chief Engineer  
Notary Public in and for the County of Cook State of Illinois

My commission expires May 11, 1918

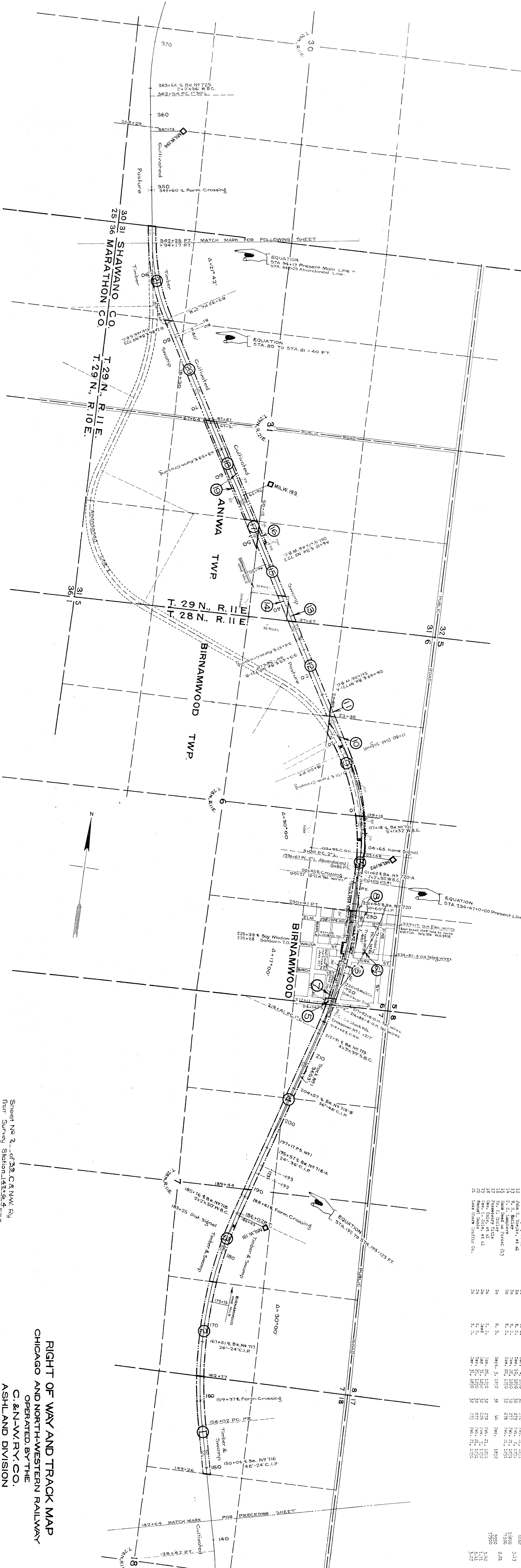
SHAWANO CO.  
T. 28 N., R. 10 E.  
MARATHON CO.

RIGHT OF WAY AND TRACK MAP  
CHICAGO AND NORTH-WESTERN RAILWAY  
OPERATED BY THE  
C. & N. W. RY. CO.  
ASHLAND DIVISION  
ELAND, WIS. TO STATE LINE, MICH.

BIRNAMWOOD TWP.  
WITTENBERG TWP.



PLATTED - C.V.B. - AUG. 14, 1916.  
 TRACED - V.W.C. - SEPT. 3, 1916.  
 CHECKED - C.M.F.C. - SEPT. 21, 1916.



NO.	DESCRIPTION	DATE	BY	AMOUNT	DATE	BY	AMOUNT
1	Shawano Co. Right of Way	Nov. 30, 1910	W.C.	500	Nov. 30, 1910	W.C.	500
2	Shawano Co. Right of Way	Dec. 1, 1910	W.C.	500	Dec. 1, 1910	W.C.	500
3	Shawano Co. Right of Way	Jan. 1, 1911	W.C.	500	Jan. 1, 1911	W.C.	500
4	Shawano Co. Right of Way	Feb. 1, 1911	W.C.	500	Feb. 1, 1911	W.C.	500
5	Shawano Co. Right of Way	Mar. 1, 1911	W.C.	500	Mar. 1, 1911	W.C.	500
6	Shawano Co. Right of Way	Apr. 1, 1911	W.C.	500	Apr. 1, 1911	W.C.	500
7	Shawano Co. Right of Way	May 1, 1911	W.C.	500	May 1, 1911	W.C.	500
8	Shawano Co. Right of Way	Jun. 1, 1911	W.C.	500	Jun. 1, 1911	W.C.	500
9	Shawano Co. Right of Way	Jul. 1, 1911	W.C.	500	Jul. 1, 1911	W.C.	500
10	Shawano Co. Right of Way	Aug. 1, 1911	W.C.	500	Aug. 1, 1911	W.C.	500
11	Shawano Co. Right of Way	Sep. 1, 1911	W.C.	500	Sep. 1, 1911	W.C.	500
12	Shawano Co. Right of Way	Oct. 1, 1911	W.C.	500	Oct. 1, 1911	W.C.	500
13	Shawano Co. Right of Way	Nov. 1, 1911	W.C.	500	Nov. 1, 1911	W.C.	500
14	Shawano Co. Right of Way	Dec. 1, 1911	W.C.	500	Dec. 1, 1911	W.C.	500
15	Shawano Co. Right of Way	Jan. 1, 1912	W.C.	500	Jan. 1, 1912	W.C.	500
16	Shawano Co. Right of Way	Feb. 1, 1912	W.C.	500	Feb. 1, 1912	W.C.	500
17	Shawano Co. Right of Way	Mar. 1, 1912	W.C.	500	Mar. 1, 1912	W.C.	500
18	Shawano Co. Right of Way	Apr. 1, 1912	W.C.	500	Apr. 1, 1912	W.C.	500
19	Shawano Co. Right of Way	May 1, 1912	W.C.	500	May 1, 1912	W.C.	500
20	Shawano Co. Right of Way	Jun. 1, 1912	W.C.	500	Jun. 1, 1912	W.C.	500
21	Shawano Co. Right of Way	Jul. 1, 1912	W.C.	500	Jul. 1, 1912	W.C.	500
22	Shawano Co. Right of Way	Aug. 1, 1912	W.C.	500	Aug. 1, 1912	W.C.	500
23	Shawano Co. Right of Way	Sep. 1, 1912	W.C.	500	Sep. 1, 1912	W.C.	500
24	Shawano Co. Right of Way	Oct. 1, 1912	W.C.	500	Oct. 1, 1912	W.C.	500
25	Shawano Co. Right of Way	Nov. 1, 1912	W.C.	500	Nov. 1, 1912	W.C.	500
26	Shawano Co. Right of Way	Dec. 1, 1912	W.C.	500	Dec. 1, 1912	W.C.	500
27	Shawano Co. Right of Way	Jan. 1, 1913	W.C.	500	Jan. 1, 1913	W.C.	500
28	Shawano Co. Right of Way	Feb. 1, 1913	W.C.	500	Feb. 1, 1913	W.C.	500
29	Shawano Co. Right of Way	Mar. 1, 1913	W.C.	500	Mar. 1, 1913	W.C.	500
30	Shawano Co. Right of Way	Apr. 1, 1913	W.C.	500	Apr. 1, 1913	W.C.	500
31	Shawano Co. Right of Way	May 1, 1913	W.C.	500	May 1, 1913	W.C.	500
32	Shawano Co. Right of Way	Jun. 1, 1913	W.C.	500	Jun. 1, 1913	W.C.	500
33	Shawano Co. Right of Way	Jul. 1, 1913	W.C.	500	Jul. 1, 1913	W.C.	500
34	Shawano Co. Right of Way	Aug. 1, 1913	W.C.	500	Aug. 1, 1913	W.C.	500
35	Shawano Co. Right of Way	Sep. 1, 1913	W.C.	500	Sep. 1, 1913	W.C.	500
36	Shawano Co. Right of Way	Oct. 1, 1913	W.C.	500	Oct. 1, 1913	W.C.	500
37	Shawano Co. Right of Way	Nov. 1, 1913	W.C.	500	Nov. 1, 1913	W.C.	500
38	Shawano Co. Right of Way	Dec. 1, 1913	W.C.	500	Dec. 1, 1913	W.C.	500
39	Shawano Co. Right of Way	Jan. 1, 1914	W.C.	500	Jan. 1, 1914	W.C.	500
40	Shawano Co. Right of Way	Feb. 1, 1914	W.C.	500	Feb. 1, 1914	W.C.	500
41	Shawano Co. Right of Way	Mar. 1, 1914	W.C.	500	Mar. 1, 1914	W.C.	500
42	Shawano Co. Right of Way	Apr. 1, 1914	W.C.	500	Apr. 1, 1914	W.C.	500
43	Shawano Co. Right of Way	May 1, 1914	W.C.	500	May 1, 1914	W.C.	500
44	Shawano Co. Right of Way	Jun. 1, 1914	W.C.	500	Jun. 1, 1914	W.C.	500
45	Shawano Co. Right of Way	Jul. 1, 1914	W.C.	500	Jul. 1, 1914	W.C.	500
46	Shawano Co. Right of Way	Aug. 1, 1914	W.C.	500	Aug. 1, 1914	W.C.	500
47	Shawano Co. Right of Way	Sep. 1, 1914	W.C.	500	Sep. 1, 1914	W.C.	500
48	Shawano Co. Right of Way	Oct. 1, 1914	W.C.	500	Oct. 1, 1914	W.C.	500
49	Shawano Co. Right of Way	Nov. 1, 1914	W.C.	500	Nov. 1, 1914	W.C.	500
50	Shawano Co. Right of Way	Dec. 1, 1914	W.C.	500	Dec. 1, 1914	W.C.	500

Sheet No. 2 of 32 C. & N.W. Ry.  
 From Survey Station 1447+25  
 to Survey Station 342+25  
 25 P. 14-S.  
 Valuation Engineer

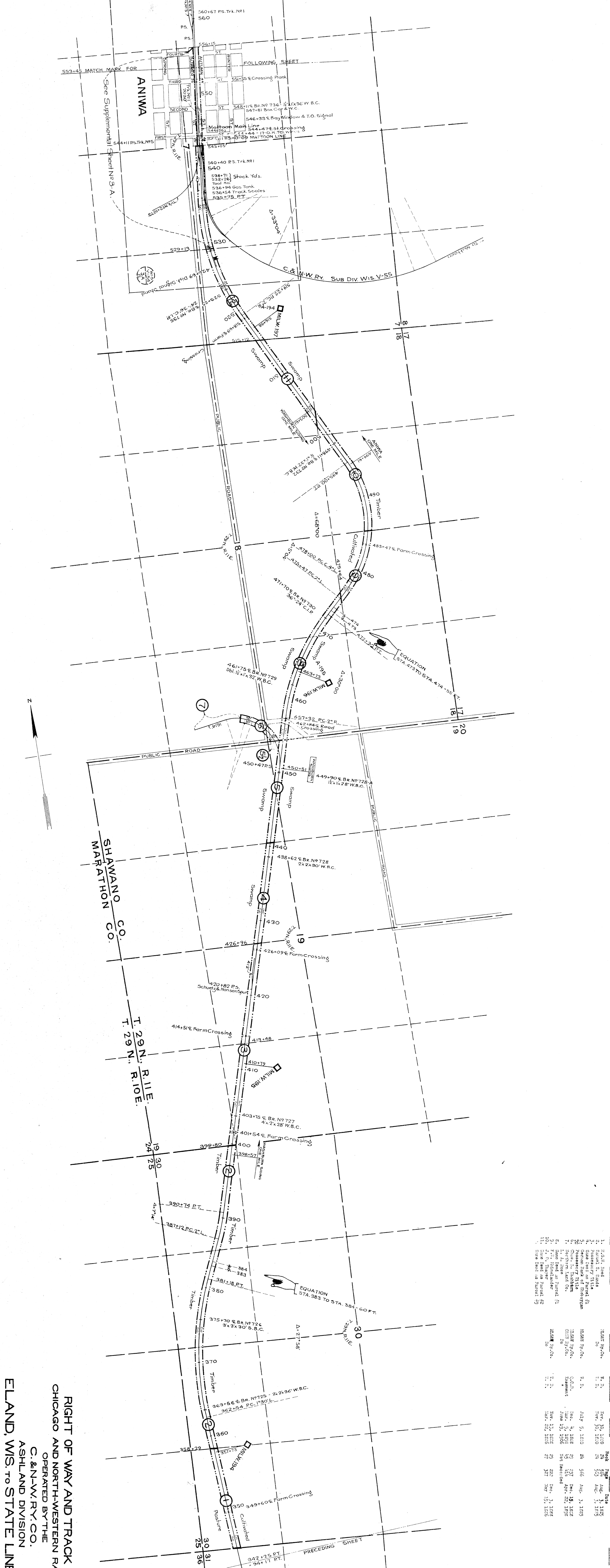
**RIGHT OF WAY AND TRACK MAP**  
**CHICAGO AND NORTH-WESTERN RAILWAY**  
 OPERATED BY THE  
**C. & N.W. RY. CO.**  
 ASHLAND DIVISION  
**ELAND, WIS. TO STATE LINE, MICH.**  
 STA. 142+64 TO STA. 342+25  
 SCALE: 1" = 400'-FT.  
 JUNE 30, 1917.  
 OFFICE OF CHIEF ENGINEER  
 CHICAGO, ILL.



PLATTED - C.V.E. - AUG. 16, 1916.  
 CHECKED - C.M.C. - SEPT. 21, 1916.

560+67 P.S. Trk. No. 1  
 560  
 556+15  
 550  
 548+11 E. Br. No. 736 - 12' x 36' W.B.C.  
 547+81 Box Car & W.C.  
 546+33 E. Bay Window & T.O. Signal  
 544+47 E. St. Dropping  
 543+05  
 540+40 P.S. Trk. No. 1  
 540  
 538+71 Stock Yds.  
 538+26  
 536+94 Gas Tank  
 536+54 Track Scales  
 535+75 P.T.  
 529+13  
 520  
 519+72 P.C. 2° R.  
 519+49  
 518+49 E. Form  
 517+51  
 516+49 E. Form  
 515+51  
 514+51  
 513+51  
 512+51  
 511+51  
 510+51  
 509+51  
 508+51  
 507+51  
 506+51  
 505+51  
 504+51  
 503+51  
 502+51  
 501+51  
 500+51  
 499+51  
 498+51  
 497+51  
 496+51  
 495+51  
 494+51  
 493+51  
 492+51  
 491+51  
 490+51  
 489+51  
 488+51  
 487+51  
 486+51  
 485+51  
 484+51  
 483+51  
 482+51  
 481+51  
 480+51  
 479+51  
 478+51  
 477+51  
 476+51  
 475+51  
 474+51  
 473+51  
 472+51  
 471+51  
 470+51  
 469+51  
 468+51  
 467+51  
 466+51  
 465+51  
 464+51  
 463+51  
 462+51  
 461+51  
 460+51  
 459+51  
 458+51  
 457+51  
 456+51  
 455+51  
 454+51  
 453+51  
 452+51  
 451+51  
 450+51  
 449+51  
 448+51  
 447+51  
 446+51  
 445+51  
 444+51  
 443+51  
 442+51  
 441+51  
 440+51  
 439+51  
 438+51  
 437+51  
 436+51  
 435+51  
 434+51  
 433+51  
 432+51  
 431+51  
 430+51  
 429+51  
 428+51  
 427+51  
 426+51  
 425+51  
 424+51  
 423+51  
 422+51  
 421+51  
 420+51  
 419+51  
 418+51  
 417+51  
 416+51  
 415+51  
 414+51  
 413+51  
 412+51  
 411+51  
 410+51  
 409+51  
 408+51  
 407+51  
 406+51  
 405+51  
 404+51  
 403+51  
 402+51  
 401+51  
 400+51  
 399+51  
 398+51  
 397+51  
 396+51  
 395+51  
 394+51  
 393+51  
 392+51  
 391+51  
 390+51  
 389+51  
 388+51  
 387+51  
 386+51  
 385+51  
 384+51  
 383+51  
 382+51  
 381+51  
 380+51  
 379+51  
 378+51  
 377+51  
 376+51  
 375+51  
 374+51  
 373+51  
 372+51  
 371+51  
 370+51  
 369+51  
 368+51  
 367+51  
 366+51  
 365+51  
 364+51  
 363+51  
 362+51  
 361+51  
 360+51  
 359+51  
 358+51  
 357+51  
 356+51  
 355+51  
 354+51  
 353+51  
 352+51  
 351+51  
 350+51  
 349+51  
 348+51  
 347+51  
 346+51  
 345+51  
 344+51  
 343+51  
 342+51  
 341+51  
 340+51  
 339+51  
 338+51  
 337+51  
 336+51  
 335+51  
 334+51  
 333+51  
 332+51  
 331+51  
 330+51  
 329+51  
 328+51  
 327+51  
 326+51  
 325+51  
 324+51  
 323+51  
 322+51  
 321+51  
 320+51  
 319+51  
 318+51  
 317+51  
 316+51  
 315+51  
 314+51  
 313+51  
 312+51  
 311+51  
 310+51  
 309+51  
 308+51  
 307+51  
 306+51  
 305+51  
 304+51  
 303+51  
 302+51  
 301+51  
 300+51  
 299+51  
 298+51  
 297+51  
 296+51  
 295+51  
 294+51  
 293+51  
 292+51  
 291+51  
 290+51  
 289+51  
 288+51  
 287+51  
 286+51  
 285+51  
 284+51  
 283+51  
 282+51  
 281+51  
 280+51  
 279+51  
 278+51  
 277+51  
 276+51  
 275+51  
 274+51  
 273+51  
 272+51  
 271+51  
 270+51  
 269+51  
 268+51  
 267+51  
 266+51  
 265+51  
 264+51  
 263+51  
 262+51  
 261+51  
 260+51  
 259+51  
 258+51  
 257+51  
 256+51  
 255+51  
 254+51  
 253+51  
 252+51  
 251+51  
 250+51  
 249+51  
 248+51  
 247+51  
 246+51  
 245+51  
 244+51  
 243+51  
 242+51  
 241+51  
 240+51  
 239+51  
 238+51  
 237+51  
 236+51  
 235+51  
 234+51  
 233+51  
 232+51  
 231+51  
 230+51  
 229+51  
 228+51  
 227+51  
 226+51  
 225+51  
 224+51  
 223+51  
 222+51  
 221+51  
 220+51  
 219+51  
 218+51  
 217+51  
 216+51  
 215+51  
 214+51  
 213+51  
 212+51  
 211+51  
 210+51  
 209+51  
 208+51  
 207+51  
 206+51  
 205+51  
 204+51  
 203+51  
 202+51  
 201+51  
 200+51  
 199+51  
 198+51  
 197+51  
 196+51  
 195+51  
 194+51  
 193+51  
 192+51  
 191+51  
 190+51  
 189+51  
 188+51  
 187+51  
 186+51  
 185+51  
 184+51  
 183+51  
 182+51  
 181+51  
 180+51  
 179+51  
 178+51  
 177+51  
 176+51  
 175+51  
 174+51  
 173+51  
 172+51  
 171+51  
 170+51  
 169+51  
 168+51  
 167+51  
 166+51  
 165+51  
 164+51  
 163+51  
 162+51  
 161+51  
 160+51  
 159+51  
 158+51  
 157+51  
 156+51  
 155+51  
 154+51  
 153+51  
 152+51  
 151+51  
 150+51  
 149+51  
 148+51  
 147+51  
 146+51  
 145+51  
 144+51  
 143+51  
 142+51  
 141+51  
 140+51  
 139+51  
 138+51  
 137+51  
 136+51  
 135+51  
 134+51  
 133+51  
 132+51  
 131+51  
 130+51  
 129+51  
 128+51  
 127+51  
 126+51  
 125+51  
 124+51  
 123+51  
 122+51  
 121+51  
 120+51  
 119+51  
 118+51  
 117+51  
 116+51  
 115+51  
 114+51  
 113+51  
 112+51  
 111+51  
 110+51  
 109+51  
 108+51  
 107+51  
 106+51  
 105+51  
 104+51  
 103+51  
 102+51  
 101+51  
 100+51  
 99+51  
 98+51  
 97+51  
 96+51  
 95+51  
 94+51  
 93+51  
 92+51  
 91+51  
 90+51  
 89+51  
 88+51  
 87+51  
 86+51  
 85+51  
 84+51  
 83+51  
 82+51  
 81+51  
 80+51  
 79+51  
 78+51  
 77+51  
 76+51  
 75+51  
 74+51  
 73+51  
 72+51  
 71+51  
 70+51  
 69+51  
 68+51  
 67+51  
 66+51  
 65+51  
 64+51  
 63+51  
 62+51  
 61+51  
 60+51  
 59+51  
 58+51  
 57+51  
 56+51  
 55+51  
 54+51  
 53+51  
 52+51  
 51+51  
 50+51  
 49+51  
 48+51  
 47+51  
 46+51  
 45+51  
 44+51  
 43+51  
 42+51  
 41+51  
 40+51  
 39+51  
 38+51  
 37+51  
 36+51  
 35+51  
 34+51  
 33+51  
 32+51  
 31+51  
 30+51  
 29+51  
 28+51  
 27+51  
 26+51  
 25+51  
 24+51  
 23+51  
 22+51  
 21+51  
 20+51  
 19+51  
 18+51  
 17+51  
 16+51  
 15+51  
 14+51  
 13+51  
 12+51  
 11+51  
 10+51  
 9+51  
 8+51  
 7+51  
 6+51  
 5+51  
 4+51  
 3+51  
 2+51  
 1+51  
 0+51

5  
 WIS  
 V.54

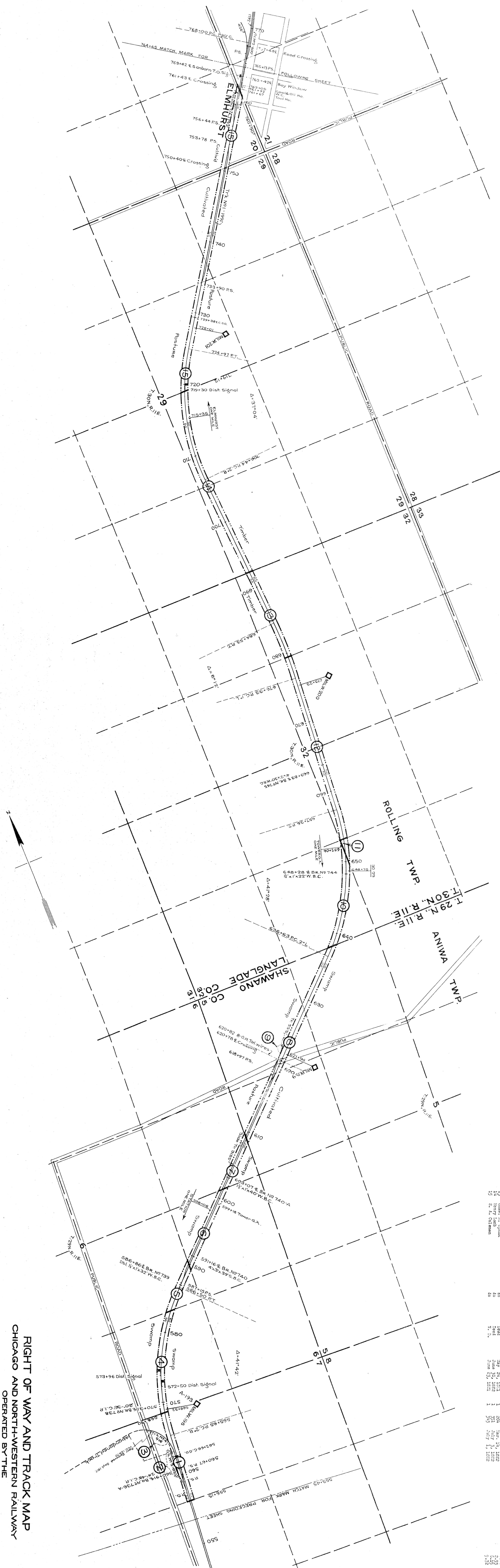


NO.	DESCRIPTION	DATE	BY	REVISION
1.	Right of Way	Nov. 30, 1910	H. H.	1.15
2.	Track	Nov. 30, 1910	H. H.	1.15
3.	Right of Way	Nov. 30, 1910	H. H.	1.15
4.	Track	Nov. 30, 1910	H. H.	1.15
5.	Right of Way	Nov. 30, 1910	H. H.	1.15
6.	Track	Nov. 30, 1910	H. H.	1.15
7.	Right of Way	Nov. 30, 1910	H. H.	1.15
8.	Track	Nov. 30, 1910	H. H.	1.15
9.	Right of Way	Nov. 30, 1910	H. H.	1.15
10.	Track	Nov. 30, 1910	H. H.	1.15
11.	Right of Way	Nov. 30, 1910	H. H.	1.15

**RIGHT OF WAY AND TRACK MAP**  
**CHICAGO AND NORTH-WESTERN RAILWAY**  
 OPERATED BY THE  
**C. & N.W. RY. CO.**  
 ASHLAND DIVISION  
**ELAND, WIS. TO STATE LINE, MICH.**  
 STA. 342+25 TO STA. 553+45  
 SCALE: 1" = 400'-FT.  
 OFFICE OF CHIEF ENGINEER  
 CHICAGO, ILL.  
 JUNE 30, 1917.



PLATTED - CIV. - AUG. 18 - 1916.  
 TRACED - V.M.C. - SEPT. 13 - 1916.  
 CHECKED - C.M.F.C. - SEPT. 21 - 1916.



NO.	SECTION	DATE	BY	REVISION	DATE	BY
1	R.O.H. Road	Nov. 10, 1900	W.C.	1st	Aug. 31, 1905	W.C.
2	W.C. Road	Nov. 10, 1900	W.C.	1st	Aug. 31, 1905	W.C.
3	W.C. Road	Nov. 10, 1900	W.C.	1st	Aug. 31, 1905	W.C.
4	W.C. Road	Nov. 10, 1900	W.C.	1st	Aug. 31, 1905	W.C.
5	W.C. Road	Nov. 10, 1900	W.C.	1st	Aug. 31, 1905	W.C.
6	W.C. Road	Nov. 10, 1900	W.C.	1st	Aug. 31, 1905	W.C.
7	W.C. Road	Nov. 10, 1900	W.C.	1st	Aug. 31, 1905	W.C.
8	W.C. Road	Nov. 10, 1900	W.C.	1st	Aug. 31, 1905	W.C.
9	W.C. Road	Nov. 10, 1900	W.C.	1st	Aug. 31, 1905	W.C.
10	W.C. Road	Nov. 10, 1900	W.C.	1st	Aug. 31, 1905	W.C.
11	W.C. Road	Nov. 10, 1900	W.C.	1st	Aug. 31, 1905	W.C.
12	W.C. Road	Nov. 10, 1900	W.C.	1st	Aug. 31, 1905	W.C.
13	W.C. Road	Nov. 10, 1900	W.C.	1st	Aug. 31, 1905	W.C.
14	W.C. Road	Nov. 10, 1900	W.C.	1st	Aug. 31, 1905	W.C.
15	W.C. Road	Nov. 10, 1900	W.C.	1st	Aug. 31, 1905	W.C.

RIGHT OF WAY AND TRACK MAP  
 CHICAGO AND NORTH-WESTERN RAILWAY  
 OPERATED BY THE  
 C. & N. W. RY. CO.  
 ASHLAND DIVISION  
 ELAND, WIS. TO STATE LINE, MICH.  
 STA. 553+45 TO STA. 764+65  
 SCALE: 1 IN. = 400 FT.  
 JUNE 30, 1917.  
 OFFICE OF CHIEF ENGINEER  
 CHICAGO, ILL.

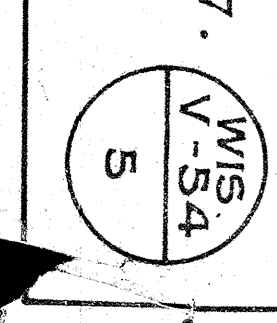


NO.	DATE	DESCRIPTION	BY	DATE	REVISION
1	1917	Plotted on Station			
2	1917	See H. Construction			
3	1917	A. J. Hunt and C. O. Hunt			
4	1917	See H. Construction			
5	1917	See H. Construction			
6	1917	See H. Construction			
7	1917	See H. Construction			
8	1917	See H. Construction			
9	1917	See H. Construction			
10	1917	See H. Construction			
11	1917	See H. Construction			
12	1917	See H. Construction			
13	1917	See H. Construction			
14	1917	See H. Construction			
15	1917	See H. Construction			
16	1917	See H. Construction			



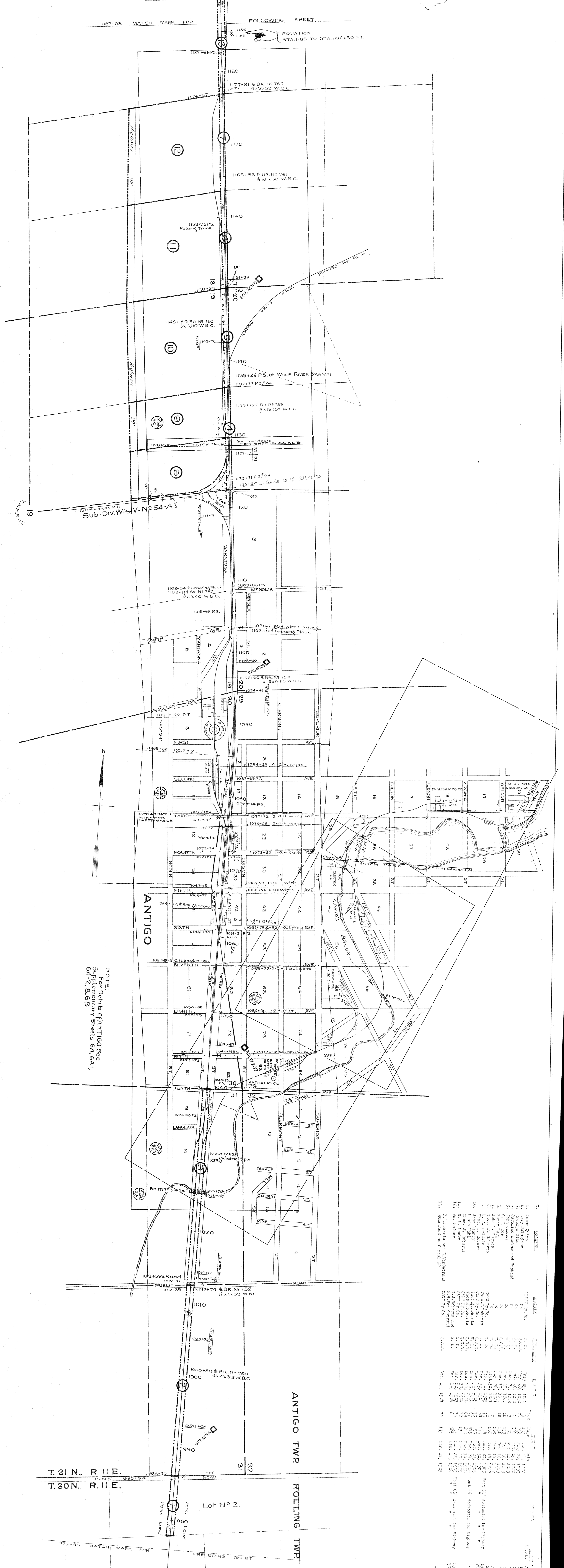
PLATTED - G.V.B. - AUG. 19-1916  
 CHECKED - C.M.F.C. - SEPT. 21-1916

RIGHT OF WAY AND TRACK MAP  
 CHICAGO AND NORTH-WESTERN RAILWAY  
 OPERATED BY THE  
 C. & N.-W. RY. CO.  
 ASHLAND DIVISION  
 ELAND, WIS. TO STATE LINE, MICH.  
 STA. 764+65 TO STA. 975+85  
 SCALE: 1 IN. = 400 FT. JUNE 30, 1917.  
 OFFICE OF CHIEF ENGINEER  
 CHICAGO, ILL.





PLATTED - R.P.L. - AUG. 24, 1916.  
 TRACED - W.C. - SEP. 1, 1916.  
 CHECKED - C.M.C. - DEPT. 21, 1916.

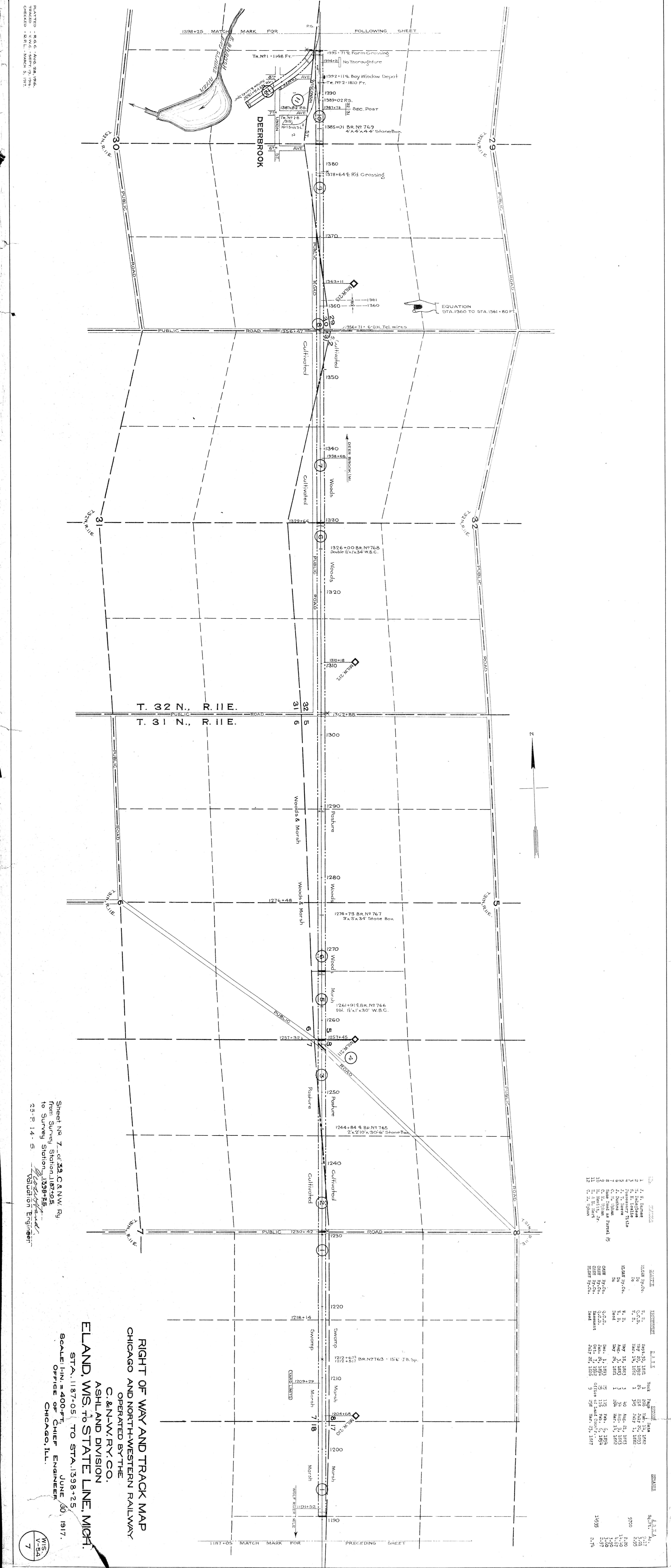


NOTE:  
 For Details of ANTIGO See  
 Supplementary Sheets 6A, 6A-1,  
 6A-2, & 6B.

NO.	DESCRIPTION	DATE	BY
1	Issue	1916	W.C.
2	Issue	1916	W.C.
3	Issue	1916	W.C.
4	Issue	1916	W.C.
5	Issue	1916	W.C.
6	Issue	1916	W.C.
7	Issue	1916	W.C.
8	Issue	1916	W.C.
9	Issue	1916	W.C.
10	Issue	1916	W.C.
11	Issue	1916	W.C.
12	Issue	1916	W.C.
13	Issue	1916	W.C.

RIGHT OF WAY AND TRACK MAP  
 CHICAGO AND NORTH-WESTERN RAILWAY  
 OPERATED BY THE  
 C. & N.W. RY. CO.  
 ASHLAND DIVISION  
 ELAND, WIS. TO STATE LINE, MICH.  
 STA. 975+85 TO STA. 1187+05  
 SCALE: 1 IN. = 400 FT.  
 JUNE 30, 1917.  
 OFFICE OF CHIEF ENGINEER  
 CHICAGO, ILL.

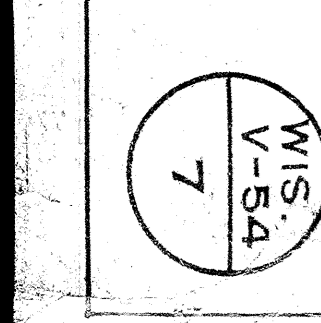




NO.	OWNER	ACREAGE	DATE	REMARKS
1	J. F. Barnes	1.07	1891	
2	J. F. Barnes & Co.	1.01	1893	
3	J. F. Barnes	2.95	1893	
4	J. F. Barnes	9700	1893	
5	J. F. Barnes	2.80	1893	
6	J. F. Barnes	1.40	1893	
7	J. F. Barnes	1.07	1893	
8	J. F. Barnes	1.40	1893	
9	J. F. Barnes	1.40	1893	
10	J. F. Barnes	1.40	1893	
11	J. F. Barnes	1.40	1893	
12	J. F. Barnes	1.40	1893	

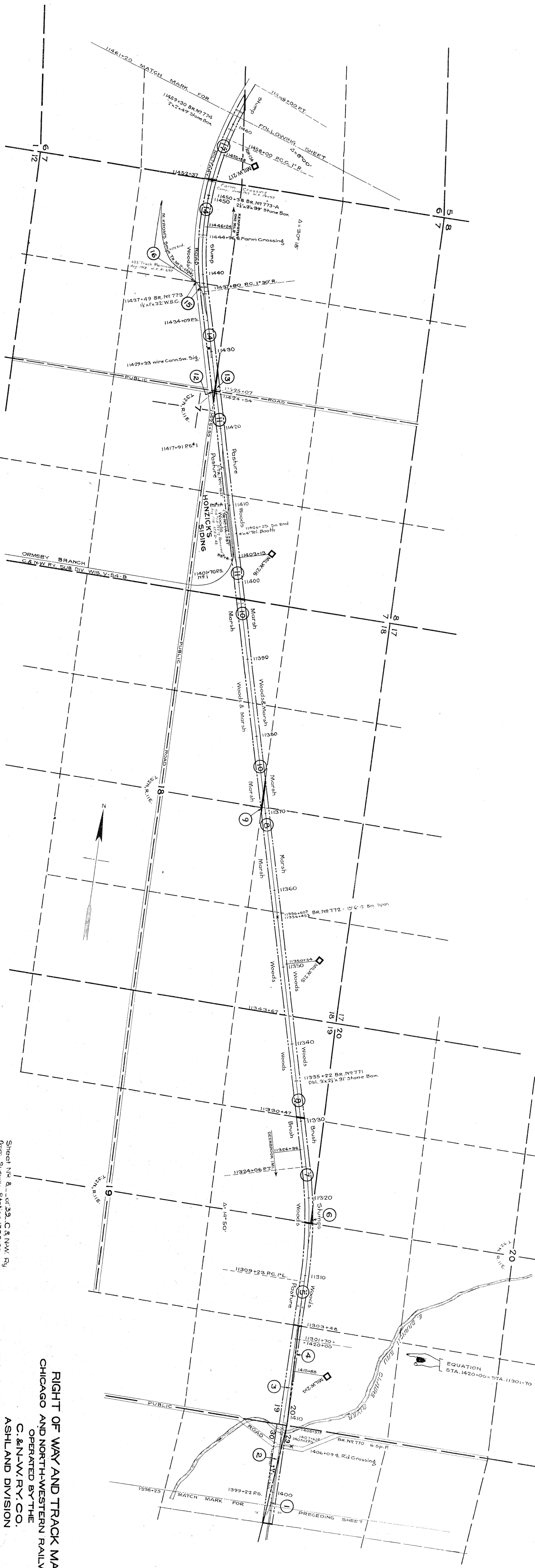
PLATTED - R.C.C. - AUG. 28, 1916.  
 TRACED - V.W.C. - SEPT. 19, 1916.  
 CHECKED - R.P.L. - MARCH 5, 1917.

RIGHT OF WAY AND TRACK MAP  
 CHICAGO AND NORTH-WESTERN RAILWAY  
 OPERATED BY THE  
 C. & N.W. RY. CO.  
 ASHLAND DIVISION  
 ELAND, WIS. TO STATE LINE, MICH.  
 STA. 1187+05 TO STA. 1398+25  
 SCALE: 1" = 400'-FT.  
 OFFICE OF CHIEF ENGINEER  
 CHICAGO, ILL.  
 JUNE 30, 1917.



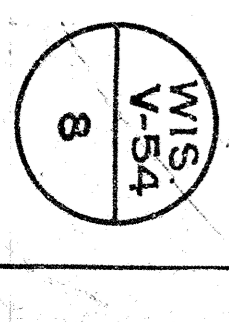


PLATTED - R.G.C. - AUG. 30, 1916.  
 TRACKED - V.C.C. - AUG. 30, 1916.  
 CHECKED - R.P.L. - MARCH 5, 1917.

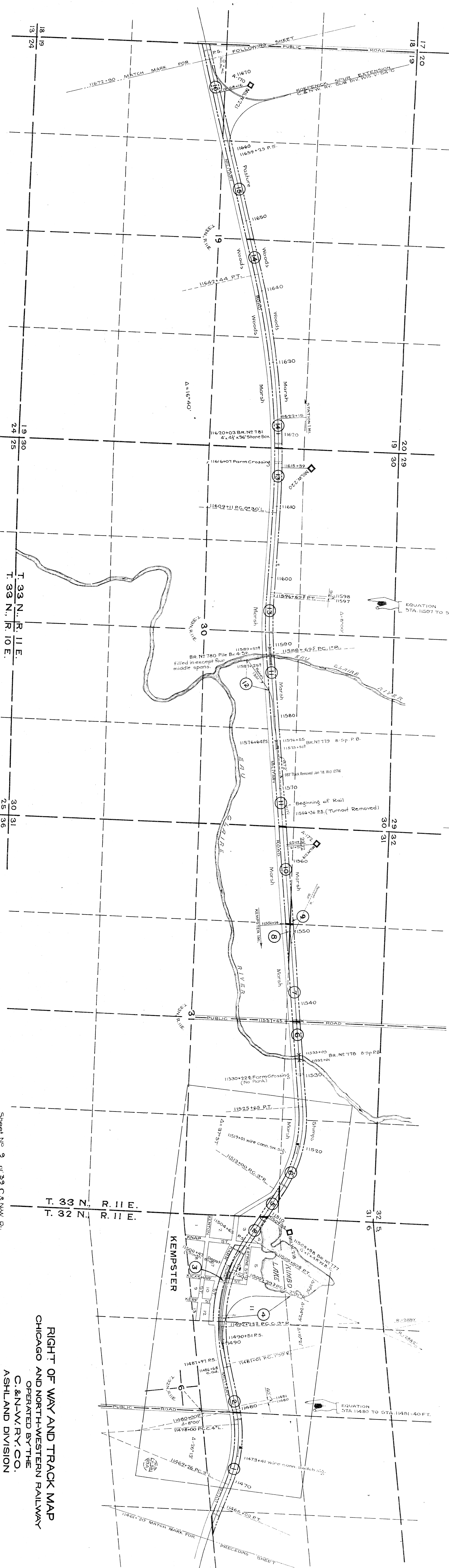


NO.	OWNER	ACRES	DATE	REMARKS	AREA
1	Reservoir Title	0.00	1899		0.00
2	A. L. Cary	0.00	1899		0.00
3	Reservoir Title	0.00	1899		0.00
4	Reservoir Title	0.00	1899		0.00
5	Reservoir Title	0.00	1899		0.00
6	Reservoir Title	0.00	1899		0.00
7	Reservoir Title	0.00	1899		0.00
8	Reservoir Title	0.00	1899		0.00
9	Reservoir Title	0.00	1899		0.00
10	Reservoir Title	0.00	1899		0.00
11	Reservoir Title	0.00	1899		0.00
12	Reservoir Title	0.00	1899		0.00
13	Reservoir Title	0.00	1899		0.00
14	Reservoir Title	0.00	1899		0.00
15	Reservoir Title	0.00	1899		0.00
16	Reservoir Title	0.00	1899		0.00
17	Reservoir Title	0.00	1899		0.00

RIGHT OF WAY AND TRACK MAP  
 CHICAGO AND NORTH-WESTERN RAILWAY  
 OPERATED BY THE  
 C. & N. W. RY. CO.  
 ASHLAND DIVISION  
 ELAND, WIS. TO STATE LINE, MICH.  
 STA. 1398+25 TO STA. 1140+20  
 SCALE: 1 IN. = 400 FT. JUNE 30, 1917.  
 OFFICE OF CHIEF ENGINEER  
 CHICAGO, ILL.







NO.	SECTION	DATE	REVISION	BY
1	11670 to 11660	Jan. 6, 1917	As per 11670	J. A. G.
2	11660 to 11650	Jan. 6, 1917	As per 11660	J. A. G.
3	11650 to 11640	Jan. 6, 1917	As per 11650	J. A. G.
4	11640 to 11630	Jan. 6, 1917	As per 11640	J. A. G.
5	11630 to 11620	Jan. 6, 1917	As per 11630	J. A. G.
6	11620 to 11610	Jan. 6, 1917	As per 11620	J. A. G.
7	11610 to 11600	Jan. 6, 1917	As per 11610	J. A. G.
8	11600 to 11590	Jan. 6, 1917	As per 11600	J. A. G.
9	11590 to 11580	Jan. 6, 1917	As per 11590	J. A. G.
10	11580 to 11570	Jan. 6, 1917	As per 11580	J. A. G.
11	11570 to 11560	Jan. 6, 1917	As per 11570	J. A. G.
12	11560 to 11550	Jan. 6, 1917	As per 11560	J. A. G.
13	11550 to 11540	Jan. 6, 1917	As per 11550	J. A. G.
14	11540 to 11530	Jan. 6, 1917	As per 11540	J. A. G.
15	11530 to 11520	Jan. 6, 1917	As per 11530	J. A. G.
16	11520 to 11510	Jan. 6, 1917	As per 11520	J. A. G.

RIGHT OF WAY AND TRACK MAP  
CHICAGO AND NORTH-WESTERN RAILWAY  
OPERATED BY THE  
C. & N. W. RY. CO.  
ASHLAND DIVISION  
ELAND, WIS. TO STATE LINE, MICH.  
STA. 11461+70 TO STA. 11672+90  
SCALE: 1" = 400'-FT.  
JUNE 30, 1917.  
OFFICE OF CHIEF ENGINEER  
CHICAGO, ILL.

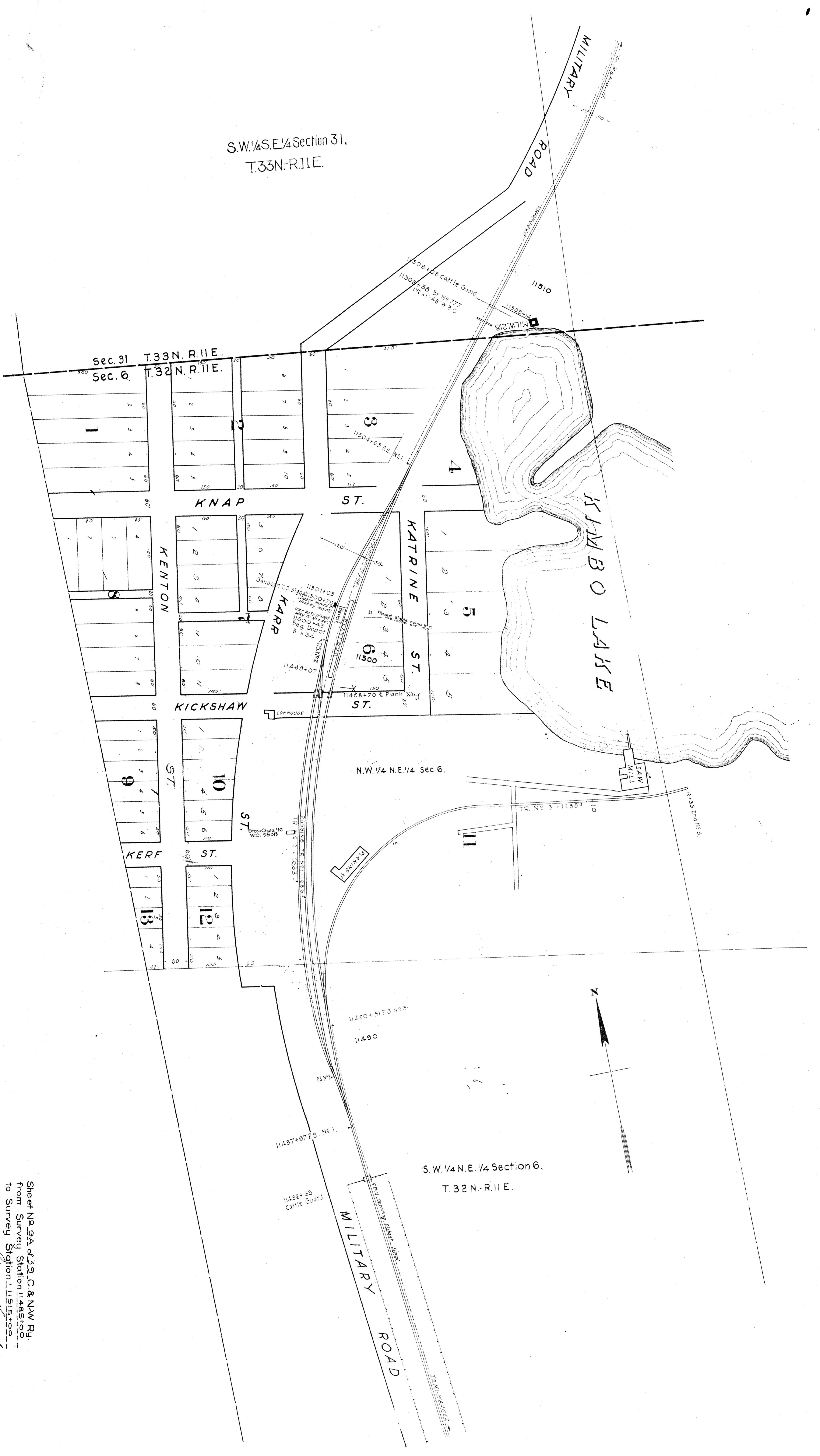
PLATTED - R.S.G. - SEPT. 1, 1916.  
TRADED - V.W.C. - SEPT. 22, 1916.  
CHECKED - R.L.L. - MARCH 5, 1917.

Sheet No. 9 of 33 C. & N. W. Ry.  
from Survey Station 11461+70  
to Survey Station 11672+90  
25-P 14-5  
Validation Engineer

WIS  
V-54  
9



Printed by R. C. Best  
 Chicago, Ill.  
 Copyright 1917



STATION MAP - TRACKS AND STRUCTURES  
 CHICAGO AND NORTH-WESTERN RAILWAY

OPERATED BY THE  
 C. & N.-W. RY. CO.  
 ASHLAND DIVISION

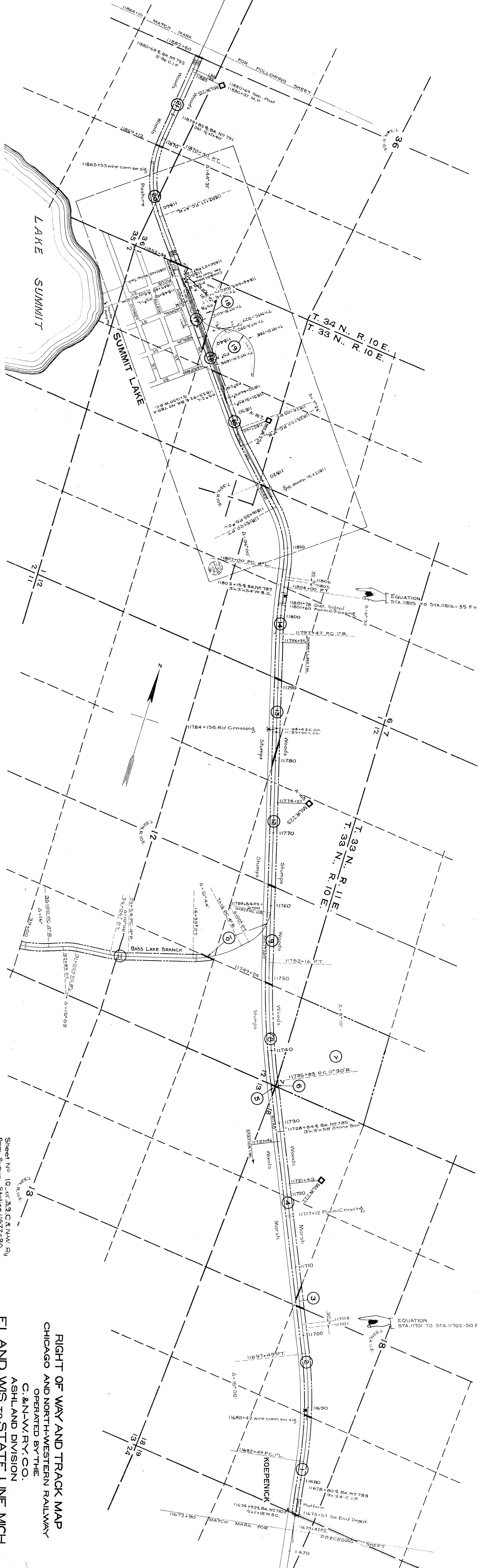
KEMPSTER, WIS.

STA. 11485+00 TO STA. 11515+00  
 SCALE 1 IN. = 100 FT.  
 OFFICE OF CHIEF ENGINEER  
 CHICAGO, ILL.  
 JUNE 30, 1917.

Sheet No. 9A of 33 C. & N.W. Ry.  
 from Survey Station 11485+00  
 to Survey Station 11515+00.  
 25-R-14-S  
 Valuation Engineer

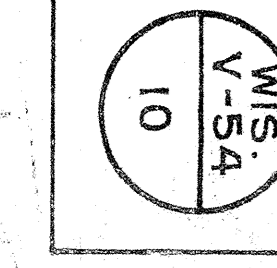


PLATTED - R.G.C. - AUG. 25, 1916.  
 TRACKED - V.W.C. - SEPT. 28, 1916.  
 CHECKED - R.P.L. - MARCH 5, 1917.

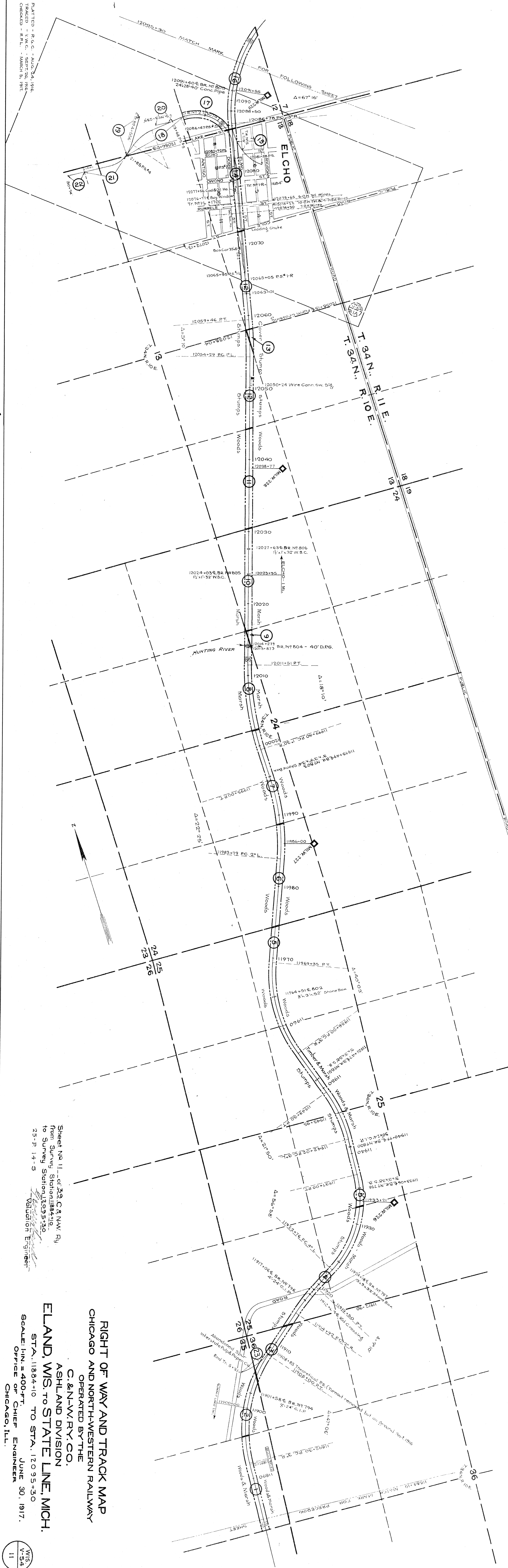


NO.	DESCRIPTION	DATE	BY	REVISION	AREA
1	E. S. Koepenick	June 24, 1909	Page 1	11670	3.15
2	J. A. Spalding	July 6, 1909	25	11670	3.15
3	F. A. Koepenick	Dec. 5, 1909	26	11670	3.15
4	W. A. Koepenick	Dec. 5, 1909	27	11670	3.15
5	H. A. Koepenick	Dec. 5, 1909	28	11670	3.15
6	W. A. Koepenick	Dec. 5, 1909	29	11670	3.15
7	W. A. Koepenick	Dec. 5, 1909	30	11670	3.15
8	W. A. Koepenick	Dec. 5, 1909	31	11670	3.15
9	W. A. Koepenick	Dec. 5, 1909	32	11670	3.15
10	W. A. Koepenick	Dec. 5, 1909	33	11670	3.15
11	W. A. Koepenick	Dec. 5, 1909	34	11670	3.15
12	W. A. Koepenick	Dec. 5, 1909	35	11670	3.15
13	W. A. Koepenick	Dec. 5, 1909	36	11670	3.15
14	W. A. Koepenick	Dec. 5, 1909	37	11670	3.15
15	W. A. Koepenick	Dec. 5, 1909	38	11670	3.15
16	W. A. Koepenick	Dec. 5, 1909	39	11670	3.15
17	W. A. Koepenick	Dec. 5, 1909	40	11670	3.15
18	W. A. Koepenick	Dec. 5, 1909	41	11670	3.15
19	W. A. Koepenick	Dec. 5, 1909	42	11670	3.15
20	W. A. Koepenick	Dec. 5, 1909	43	11670	3.15
21	W. A. Koepenick	Dec. 5, 1909	44	11670	3.15
22	W. A. Koepenick	Dec. 5, 1909	45	11670	3.15

RIGHT OF WAY AND TRACK MAP  
 CHICAGO AND NORTH-WESTERN RAILWAY  
 OPERATED BY THE  
 C. & N.W. RY. CO.  
 ASHLAND DIVISION  
 ELAND, WIS. TO STATE LINE, MICH.  
 STA. 11672+90 TO STA. 11884+10  
 SCALE: 1" = 400 FT.  
 JUNE 30, 1917.  
 OFFICE OF CHIEF ENGINEER  
 CHICAGO, ILL.



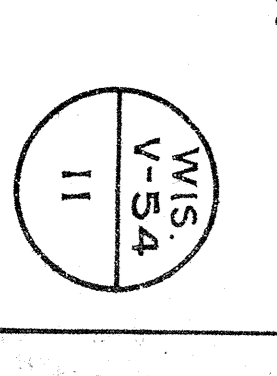




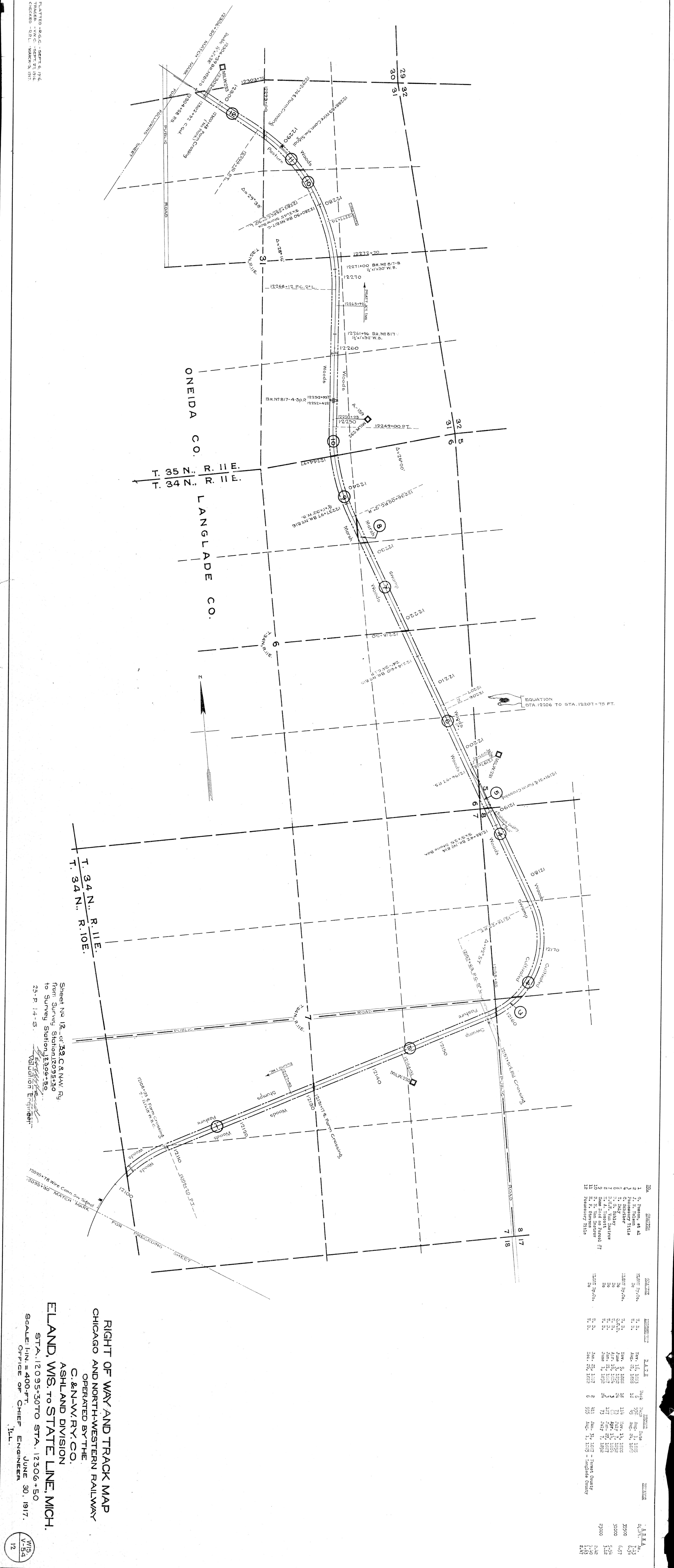
NO.	SECTION	DATE	BY	REASON	DATE	AREA
1	J. C. Hoar	Nov. 20, 1882	3	1000	1100	1.00
2	Remanory title					1.00
3	Remanory title					1.00
4	Remanory title					1.00
5	J. C. Hoar et al.	Feb. 15, 1887	3	1000	1100	1.00
6	J. C. Hoar et al.	Apr. 29, 1893	6	1000	1100	1.00
7	J. C. Hoar et al.	Apr. 29, 1893	6	1000	1100	1.00
8	J. C. Hoar et al.	Apr. 29, 1893	6	1000	1100	1.00
9	J. C. Hoar et al.	Apr. 29, 1893	6	1000	1100	1.00
10	J. C. Hoar et al.	Apr. 29, 1893	6	1000	1100	1.00
11	J. C. Hoar et al.	Apr. 29, 1893	6	1000	1100	1.00
12	J. C. Hoar et al.	Apr. 29, 1893	6	1000	1100	1.00
13	J. C. Hoar et al.	Apr. 29, 1893	6	1000	1100	1.00
14	J. C. Hoar et al.	Apr. 29, 1893	6	1000	1100	1.00
15	J. C. Hoar et al.	Apr. 29, 1893	6	1000	1100	1.00
16	J. C. Hoar et al.	Apr. 29, 1893	6	1000	1100	1.00
17	J. C. Hoar et al.	Apr. 29, 1893	6	1000	1100	1.00
18	J. C. Hoar et al.	Apr. 29, 1893	6	1000	1100	1.00
19	J. C. Hoar et al.	Apr. 29, 1893	6	1000	1100	1.00
20	J. C. Hoar et al.	Apr. 29, 1893	6	1000	1100	1.00
21	J. C. Hoar et al.	Apr. 29, 1893	6	1000	1100	1.00
22	J. C. Hoar et al.	Apr. 29, 1893	6	1000	1100	1.00
23	J. C. Hoar et al.	Apr. 29, 1893	6	1000	1100	1.00
24	J. C. Hoar et al.	Apr. 29, 1893	6	1000	1100	1.00
25	J. C. Hoar et al.	Apr. 29, 1893	6	1000	1100	1.00
26	J. C. Hoar et al.	Apr. 29, 1893	6	1000	1100	1.00
27	J. C. Hoar et al.	Apr. 29, 1893	6	1000	1100	1.00

**RIGHT OF WAY AND TRACK MAP**  
**CHICAGO AND NORTH-WESTERN RAILWAY**  
 OPERATED BY THE  
**C. & N.W. RY. CO.**  
 ASHLAND DIVISION  
**ELAND, WIS. TO STATE LINE, MICH.**  
 STA. 11884+10 TO STA. 12095+30  
 SCALE: 1" = 400 FT. JUNE 30, 1917.  
 OFFICE OF CHIEF ENGINEER  
 CHICAGO, ILL.

PLATTED - R.G.C. - AUG. 24, 1916  
 TRACED - V.W.C. - SEPT. 26, 1916  
 CHECKED - R.P.L. - MARCH 5, 1917







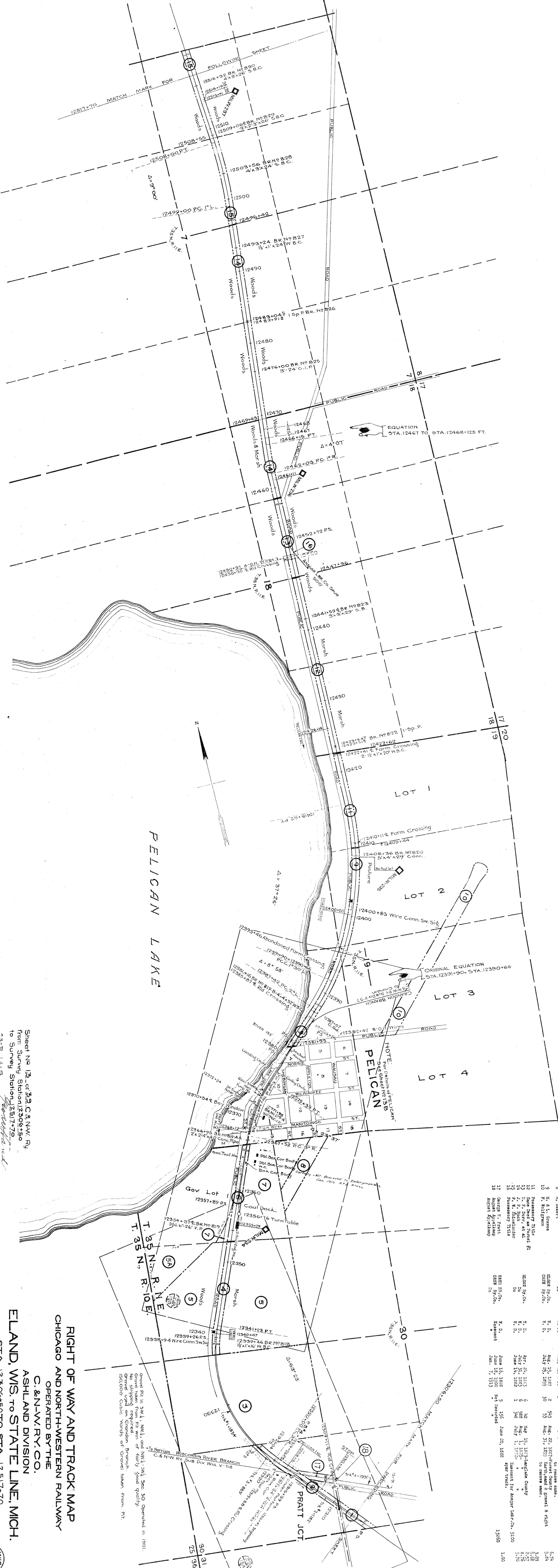
NO.	SECTION	DATE	REMARKS	AREA
1	G. Johnson, et al	Nov. 16, 1853		57.00
2	Wm. Johnson, et al	Aug. 21, 1853		5.50
3	C. Schreiber	Nov. 9, 1855		31.00
4	J. D. Kelly	June 3, 1856		5.54
5	Wm. Kelly	Apr. 10, 1856		5.12
6	Wm. Kelly	June 24, 1857		2.42
7	Swamp land on Parcel 17	Jan. 24, 1857		2.42
8	Swamp land on Parcel 17	Jan. 24, 1857		2.42
9	Swamp land on Parcel 17	Jan. 24, 1857		2.42
10	Swamp land on Parcel 17	Jan. 24, 1857		2.42
11	Swamp land on Parcel 17	Jan. 24, 1857		2.42
12	Swamp land on Parcel 17	Jan. 24, 1857		2.42

Sheet No. 12, of 39 C.R.N.W. Ry  
 from Survey Station 12095+30  
 to Survey Station 12306+50  
 25-P. 14-S.  
 Valuation Engineer

RIGHT OF WAY AND TRACK MAP  
 CHICAGO AND NORTH-WESTERN RAILWAY  
 OPERATED BY THE  
 C. & N. W. RY. CO.  
 ASHLAND DIVISION  
 ELAND, WIS. TO STATE LINE, MICH.  
 STA. 12095+30 TO STA. 12306+50  
 SCALE: 1" = 400 FT.  
 OFFICE OF CHIEF ENGINEER  
 JUNE 30, 1917.

PLATTED - B.G.C. - SEPT. 6, 1916  
 TRACED - W.V.C. - SEPT. 21, 1916  
 CHECKED - R.R.L. - MARCH 5, 1917





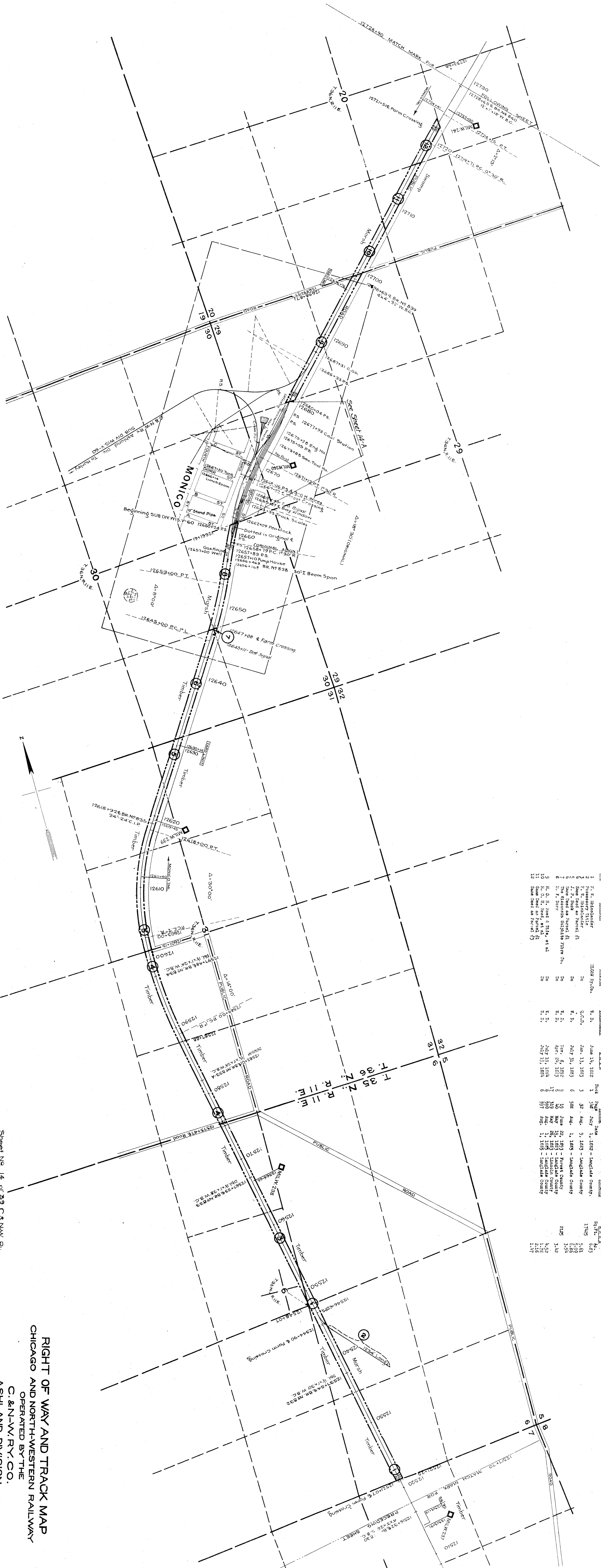
Sheet No. 13, of 32, C & N.W. Ry.  
 from Survey Station 12500+50  
 to Survey Station 12517+70.  
 V.W.C. Valuation Engineer.

**RIGHT OF WAY AND TRACK MAP**  
**CHICAGO AND NORTH-WESTERN RAILWAY**  
 OPERATED BY THE  
**C. & N.W. RY. CO.**  
**ASHLAND DIVISION**  
**ELAND, WIS. TO STATE LINE, MICH.**  
 STA. 12506+50 TO STA. 12517+70  
 SCALE: 1"=1/4" = 400 FT.  
 JUNE 30, 1917.  
 OFFICE OF CHIEF ENGINEER  
 CHICAGO, ILL.

NO.	OWNER	REMARKS	D.A.T.E.	BOOK	PAGE	DATE	REMARKS	ACRES
1	H. F. Stevens	INDIAN BY CO.	Dec. 25, 1882	6	122	Dec. 25, 1882	1.00	1.00
2	O. F. Pratt	DO	Jan. 20, 1883	2	123	Jan. 20, 1883	1.00	1.00
3	H. H. Pratt	DO	May 25, 1889	3	124	May 25, 1889	1.00	1.00
4	H. H. Pratt	DO	May 25, 1889	3	125	May 25, 1889	1.00	1.00
5	H. H. Pratt	DO	May 25, 1889	3	126	May 25, 1889	1.00	1.00
6	A. L. Cary	ALLIANCE	Sept. 15, 1891	4	127	Sept. 15, 1891	1.00	1.00
7	L. H. Pratt	INDIAN BY CO.	Mar. 21, 1892	5	128	Mar. 21, 1892	1.00	1.00
8	L. H. Pratt	INDIAN BY CO.	Mar. 21, 1892	5	129	Mar. 21, 1892	1.00	1.00
9	L. H. Pratt	INDIAN BY CO.	Mar. 21, 1892	5	130	Mar. 21, 1892	1.00	1.00
10	H. A. Owens	INDIAN BY CO.	Aug. 15, 1887	2	131	Aug. 15, 1887	1.00	1.00
11	R. F. Williams	INDIAN BY CO.	July 25, 1899	53	132	July 25, 1899	1.00	1.00
12	George F. Pratt	INDIAN BY CO.	June 15, 1882	9	133	June 15, 1882	1.00	1.00
13	August Kestump	INDIAN BY CO.	Jan. 7, 1913	156	134	Jan. 7, 1913	1.00	1.00



PLATTED - C.V.B. - SEPT. 8, 1916.  
 CHECKED - C.V.B. - OCT. 10, 1916.



NO.	OWNER	DATE	DESCRIPTION	ACRES	AMOUNT	REMARKS	A.M.A.
1	F. E. Hahnlander	June 14, 1882	1	32	Aug. 9, 1883 - Langlade County.	17483	5.63
2	Formanory Title	Jan. 13, 1883	3	588	Aug. 1, 1883 - Langlade County	17483	5.63
3	Sum Deed as Parcel #1	July 21, 1883	6	588	Aug. 1, 1883 - Langlade County	17483	5.63
4	J. P. Buck	Nov. 8, 1883	6	588	Aug. 1, 1883 - Langlade County	17483	5.63
5	Sum Deed as Parcel #2	Apr. 24, 1883	17	990	Aug. 1, 1883 - Langlade County	17483	5.63
6	Sum Deed as Parcel #3	July 27, 1883	6	597	Aug. 1, 1883 - Langlade County	17483	5.63
7	H. D. H. Ford & Wife et al	July 27, 1883	10	588	Aug. 1, 1883 - Langlade County	17483	5.63
8	Sum Deed as Parcel #4	July 27, 1883	17	990	Aug. 1, 1883 - Langlade County	17483	5.63
9	H. D. H. Ford & Wife et al	July 27, 1883	10	588	Aug. 1, 1883 - Langlade County	17483	5.63
10	Sum Deed as Parcel #5	July 27, 1883	17	990	Aug. 1, 1883 - Langlade County	17483	5.63
11	Sum Deed as Parcel #6	July 27, 1883	6	597	Aug. 1, 1883 - Langlade County	17483	5.63
12	Sum Deed as Parcel #7	July 27, 1883	6	597	Aug. 1, 1883 - Langlade County	17483	5.63

Sheet No. 14 of 23 C. & N.W. Ry.  
 from Survey Station 12517+70  
 to Survey Station 12728+90  
 23-P. 14-S.  
 Validation Engineer

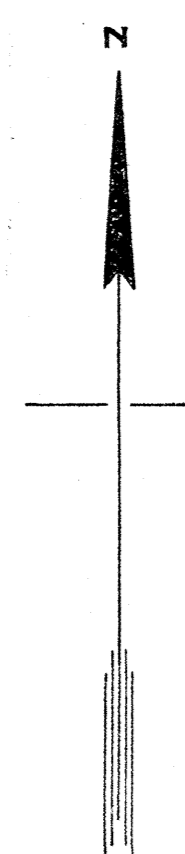
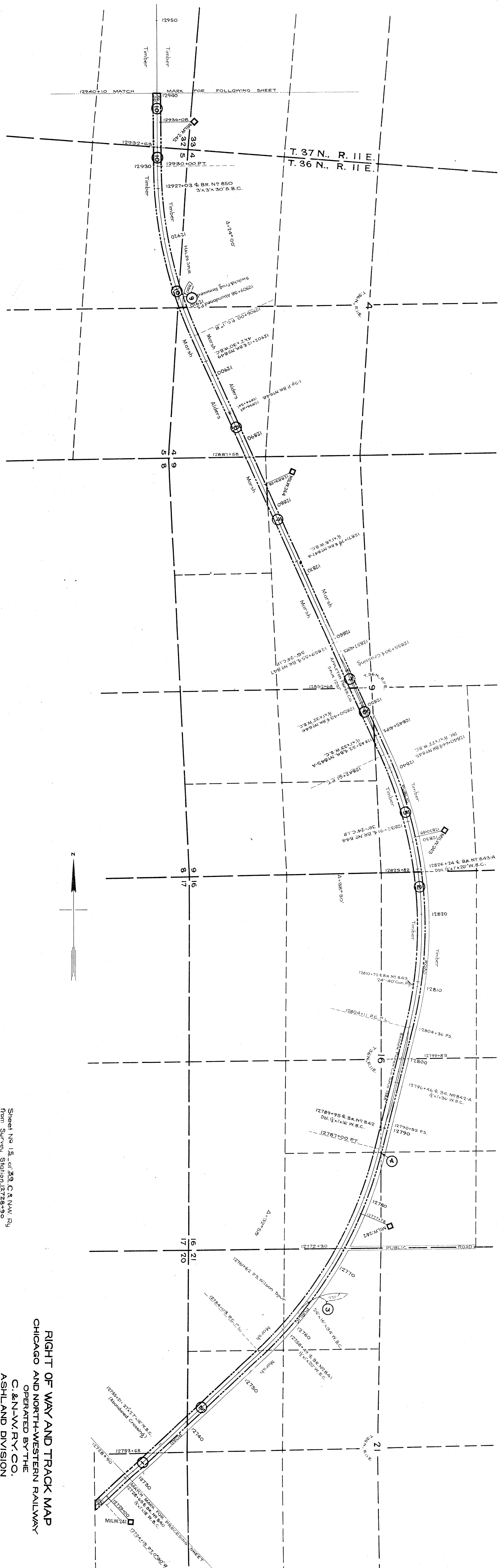
**RIGHT OF WAY AND TRACK MAP**  
**CHICAGO AND NORTH-WESTERN RAILWAY**  
 OPERATED BY THE  
**C. & N.W. RY. CO.**

ASHLAND DIVISION  
 STATION 12517+70 TO STA. 12728+90

SCALE: 1 IN. = 400 FT.  
 JUNE 30, 1917.  
 OFFICE OF CHIEF ENGINEER  
 CHICAGO, ILL.



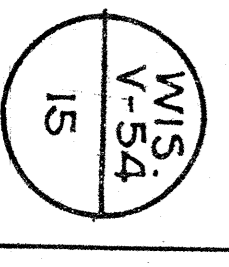
NO.	SECTION	DATE	BY	REVISION	REMARKS
1	1	July 15, 1884	W. H. C.	1	Original
2	2	July 15, 1884	W. H. C.	2	Original
3	3	July 15, 1884	W. H. C.	3	Original
4	4	July 15, 1884	W. H. C.	4	Original
5	5	July 15, 1884	W. H. C.	5	Original
6	6	July 15, 1884	W. H. C.	6	Original
7	7	July 15, 1884	W. H. C.	7	Original
8	8	July 15, 1884	W. H. C.	8	Original
9	9	July 15, 1884	W. H. C.	9	Original
10	10	July 15, 1884	W. H. C.	10	Original



**RIGHT OF WAY AND TRACK MAP**  
**CHICAGO AND NORTH-WESTERN RAILWAY**  
 OPERATED BY THE  
**C. & N. W. RY. CO.**  
 ASHLAND DIVISION

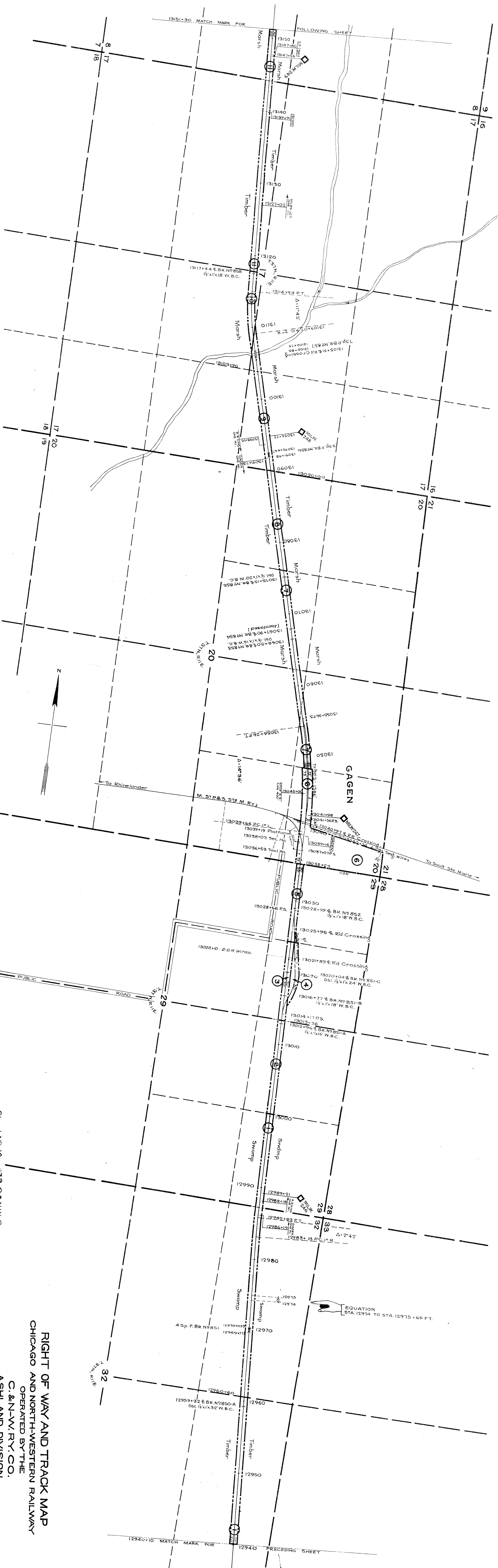
Sheet No. 15 of 39, C. & N. W. Ry.  
 from Survey Station 12728+90  
 to Survey Station 12940+10  
 25-P. 14-S.  
 Valuation Engineer

STA. 12728+90 TO STA. 12940+10  
 SCALE: 1 IN. = 400 FT.  
 JUNE 30, 1917.  
 OFFICE OF CHIEF ENGINEER  
 CHICAGO, ILL.



PLANNED - C.V.B. - SEPT. 11, 1916.  
 TRACED - C.V.B. - SEPT. 21, 1916.  
 CHECKED - C.V.B. - OCT. 13, 1916.





NO.	DESCRIPTION	DATE	BY	FOR	REMARKS
1	Subcontractor	June 13, 1882	W. D.	1	1882
2	Subcontractor	June 13, 1882	W. D.	2	1882
3	Subcontractor	June 13, 1882	W. D.	3	1882
4	Subcontractor	June 13, 1882	W. D.	4	1882
5	Subcontractor	June 13, 1882	W. D.	5	1882
6	Subcontractor	June 13, 1882	W. D.	6	1882
7	Subcontractor	June 13, 1882	W. D.	7	1882
8	Subcontractor	June 13, 1882	W. D.	8	1882
9	Subcontractor	June 13, 1882	W. D.	9	1882
10	Subcontractor	June 13, 1882	W. D.	10	1882
11	Subcontractor	June 13, 1882	W. D.	11	1882

PLATTED - C.V.B. - SEPT. 13-1916  
 TRACKED - W.V.C. - OCT. 13-1916  
 CHECKED - C.V.B. - OCT. 13-1916

RIGHT OF WAY AND TRACK MAP  
 CHICAGO AND NORTH-WESTERN RAILWAY  
 OPERATED BY THE  
 C. & N. W. RY. CO.  
 ASHLAND DIVISION  
 ELAND, WIS. TO STATE LINE, MICH.  
 STA. 12940+10 TO STA. 13151+30  
 SCALE: 1 IN. = 400 FT.  
 OFFICE OF CHIEF ENGINEER  
 CHICAGO, ILL. JUNE 30, 1917.

Sheet No. 16 of 39, C. & N. W. Ry.  
 from Survey Station 12940+10  
 to Survey Station 13151+30  
 23-P. 14-S.  
 Validation Engineer

WIS. V-54 15





NO.	SECTION	REMARKS	D.A.T.E.	BOOK	DATE	REMARKS	A.C.T.
1	P. E. Robinson	Survey of section	Jan 13, 1853	32	Aug. 31, 1853	Langlade County	1-18
2	State of Wisconsin	Survey of section	Jan 13, 1853	32	Aug. 31, 1853	Langlade County	1-18
3	State of Wisconsin	Survey of section	Jan 13, 1853	32	Aug. 31, 1853	Langlade County	1-18
4	State of Wisconsin	Survey of section	Jan 13, 1853	32	Aug. 31, 1853	Langlade County	1-18
5	State of Wisconsin	Survey of section	Jan 13, 1853	32	Aug. 31, 1853	Langlade County	1-18
6	State of Wisconsin	Survey of section	Jan 13, 1853	32	Aug. 31, 1853	Langlade County	1-18
7	State of Wisconsin	Survey of section	Jan 13, 1853	32	Aug. 31, 1853	Langlade County	1-18
8	State of Wisconsin	Survey of section	Jan 13, 1853	32	Aug. 31, 1853	Langlade County	1-18
9	State of Wisconsin	Survey of section	Jan 13, 1853	32	Aug. 31, 1853	Langlade County	1-18
10	State of Wisconsin	Survey of section	Jan 13, 1853	32	Aug. 31, 1853	Langlade County	1-18
11	State of Wisconsin	Survey of section	Jan 13, 1853	32	Aug. 31, 1853	Langlade County	1-18
12	State of Wisconsin	Survey of section	Jan 13, 1853	32	Aug. 31, 1853	Langlade County	1-18
13	State of Wisconsin	Survey of section	Jan 13, 1853	32	Aug. 31, 1853	Langlade County	1-18

Sheet No 17 of 59, C. & N.W. Ry.  
 From Survey Station 13151+50  
 to Survey Station 13362+50  
 23-P. 14-S.  
 Valuation Engineer

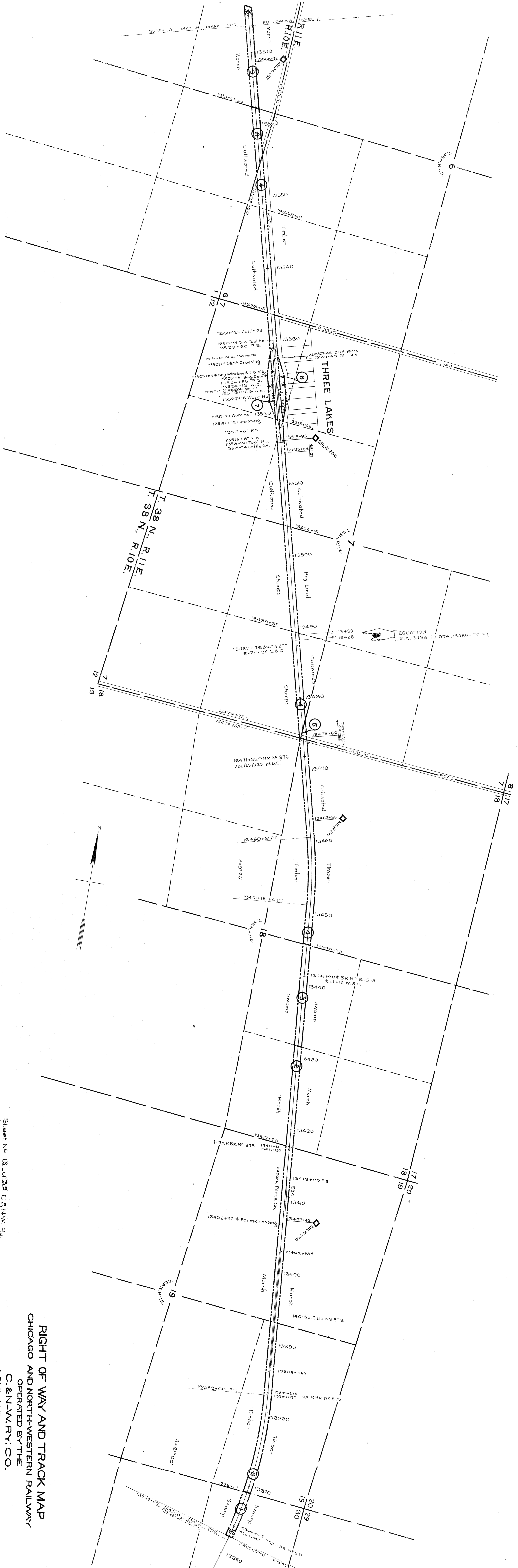
**RIGHT OF WAY AND TRACK MAP**  
**CHICAGO AND NORTH-WESTERN RAILWAY**  
 OPERATED BY THE  
**C. & N.-W. RY. CO.**  
**ASHLAND DIVISION**  
**ELAND, WIS. TO STATE LINE, MICH.**  
 STA. 13151+50 TO STA. 13362+50  
 SCALE: 1 IN. = 400 FT. JUNE 30, 1917.  
 OFFICE OF CHIEF ENGINEER  
 CHICAGO, ILL.

PLATTED - C.V.B. - SEPT. 16, 1916  
 CHECKED - W.C. - OCT. 3, 1916  
 CHECKED - C.B. - OCT. 14, 1916

WIS. V-54 17

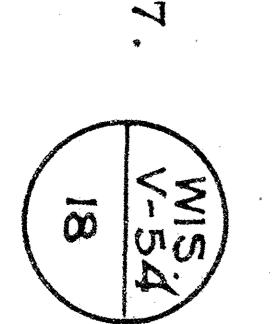


PLATTED - C.V.B. - SEPT. 19, 1916.  
 TRACKED - K.W.C. - OCT. 6, 1916.  
 CHECKED - C.V.B. - OCT. 14, 1916.



NO.	SECTION	DATE	BOOK	PAGE	REMARKS	AREA
1	State of Wisconsin	Nov. 27, 1852	202	158	Forest County	1.32
2	Alfred L. Cary	Nov. 27, 1852	202	158	Forest County	1.32
3	Alfred L. Cary	Nov. 27, 1852	202	158	Forest County	1.32
4	Alfred L. Cary	Nov. 27, 1852	202	158	Forest County	1.32
5	Alfred L. Cary	Nov. 27, 1852	202	158	Forest County	1.32
6	Alfred L. Cary	Nov. 27, 1852	202	158	Forest County	1.32
7	Alfred L. Cary	Nov. 27, 1852	202	158	Forest County	1.32
8	Alfred L. Cary	Nov. 27, 1852	202	158	Forest County	1.32
9	Alfred L. Cary	Nov. 27, 1852	202	158	Forest County	1.32

RIGHT OF WAY AND TRACK MAP  
 CHICAGO AND NORTH-WESTERN RAILWAY  
 OPERATED BY THE  
 C. & N. W. RY. CO.  
 ASHLAND DIVISION  
 ELAND, WIS. TO STATE LINE, MICH.  
 STA. 13562+50 TO STA. 13573+70  
 SCALE: 1 IN. = 400 FT.  
 JUNE 30, 1917.  
 OFFICE OF CHIEF ENGINEER  
 CHICAGO, ILL.





PLATTED - C.V.B. - SEPT. 22, 1916.  
 RECORDED - V.M.C. - OCT. 9, 1916.  
 CHECKED - C.V.B. - OCT. 16, 1916.



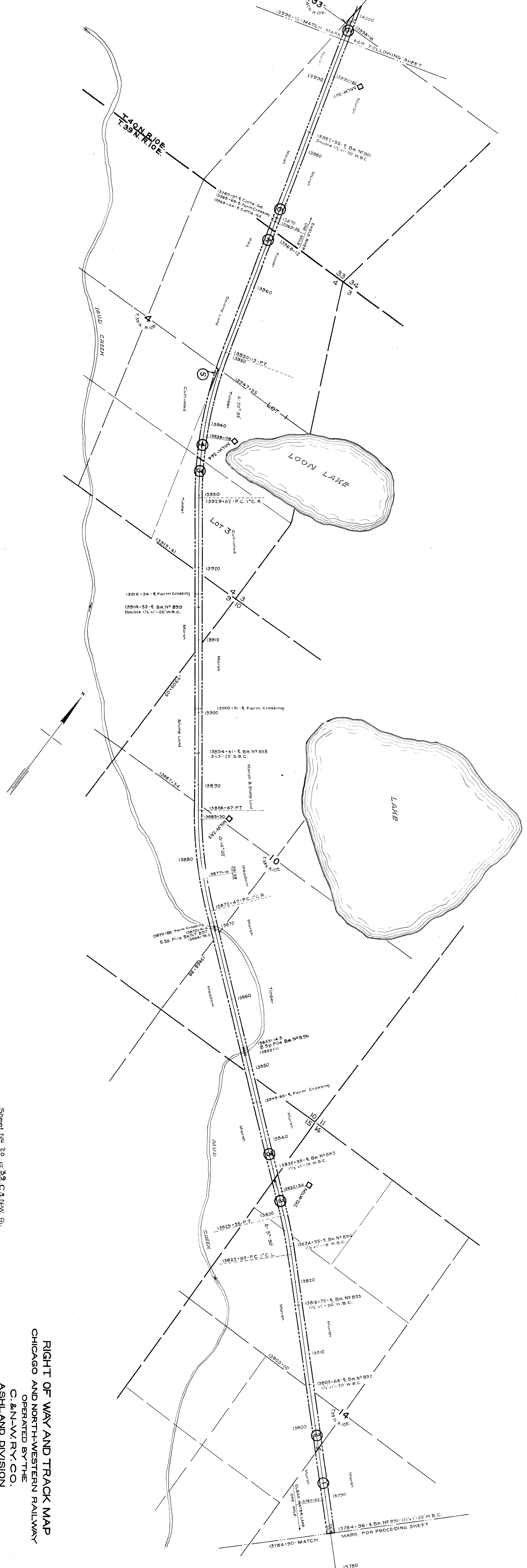
NO.	SECTION	OWNER	INSTRUMENT	DATE	ACRES	REMARKS	A.R.E.A.
1	Part of land, et al	F. D. Keaney	Oct. 29, 1892	19	115	May 4, 1892	1690
2	C. G. Keaney	Dec. 16, 1894	24	35	19	115	12.08
3	H. A. Patten, et al	Dec. 16, 1894	24	35	19	115	11.99
4	H. A. Patten, et al	Dec. 16, 1894	24	35	19	115	6.39
5	Same land as Parcel 4	Dec. 16, 1894	24	35	19	115	
6	Same land as Parcel 4	Dec. 16, 1894	24	35	19	115	
7	Same land as Parcel 4	Dec. 16, 1894	24	35	19	115	
8	Same land as Parcel 4	Dec. 16, 1894	24	35	19	115	
9	Same land as Parcel 4	Dec. 16, 1894	24	35	19	115	
10	Same land as Parcel 4	Dec. 16, 1894	24	35	19	115	
11	Same land as Parcel 4	Dec. 16, 1894	24	35	19	115	
12	Same land as Parcel 4	Dec. 16, 1894	24	35	19	115	

Sheet No 19 of 39 C. & N.W. Ry  
 from Survey Station 13573+70  
 to Survey Station 13784+90  
 25-P. 14-S.  
*W.C. Ashland*  
 Valuation Engineer

RIGHT OF WAY AND TRACK MAP  
 CHICAGO AND NORTH-WESTERN RAILWAY  
 OPERATED BY THE  
 C. & N.W. RY. CO.  
 ASHLAND DIVISION  
 ELAND, WIS. TO STATE LINE, MICH.  
 STA. 13573+70 TO STA. 13784+90  
 SCALE: 1 IN. = 400 FT.  
 JUNE 30, 1917.  
 OFFICE OF CHIEF ENGINEER  
 CHICAGO, ILL.



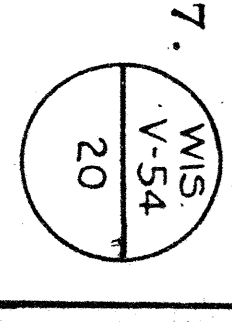
NO.	DATE	BY	REVISION	DATE
1	1899	W. H. C.	Original	
2	1900	W. H. C.	As amended	
3	1901	W. H. C.	As amended	
4	1902	W. H. C.	As amended	
5	1903	W. H. C.	As amended	



**RIGHT OF WAY AND TRACK MAP**  
**CHICAGO AND NORTH-WESTERN RAILWAY**  
 OPERATED BY THE  
**C. & N. W. RY. CO.**  
**ASHLAND DIVISION**  
**ELAND, WIS. TO STATE LINE, MICH.**

Sheet No. 20, of 39 C. & N. W. Ry.  
 from Survey Station 13784+90  
 to Survey Station 13996+10.  
 29-P. 14-S.  
 Validation Engineer

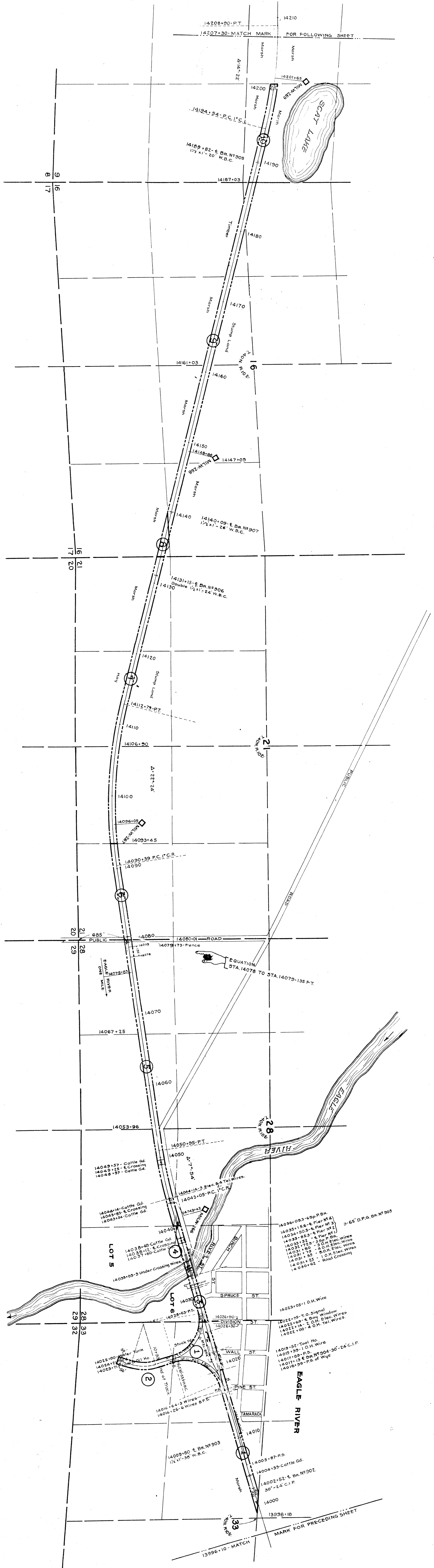
STA. 13784+90 TO STA. 13996+10  
 SCALE: 1 IN. = 400 FT.  
 JUNE 30, 1917.  
 OFFICE OF CHIEF ENGINEER  
 CHICAGO, ILL.



PLATTED CIV. ENGR. SH. 27, 1916.  
 TRACKED PLANN. SH. 10, 1916.  
 TRACKED CIV. ENGR. SH. 13, 1916.

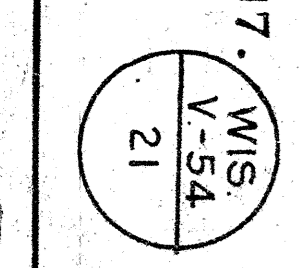


Plotted C.V.B. Sep. 13, 1916  
 Traced R.A.W. Oct. 13, 1916  
 Checked C.V.B. Oct. 13, 1916.

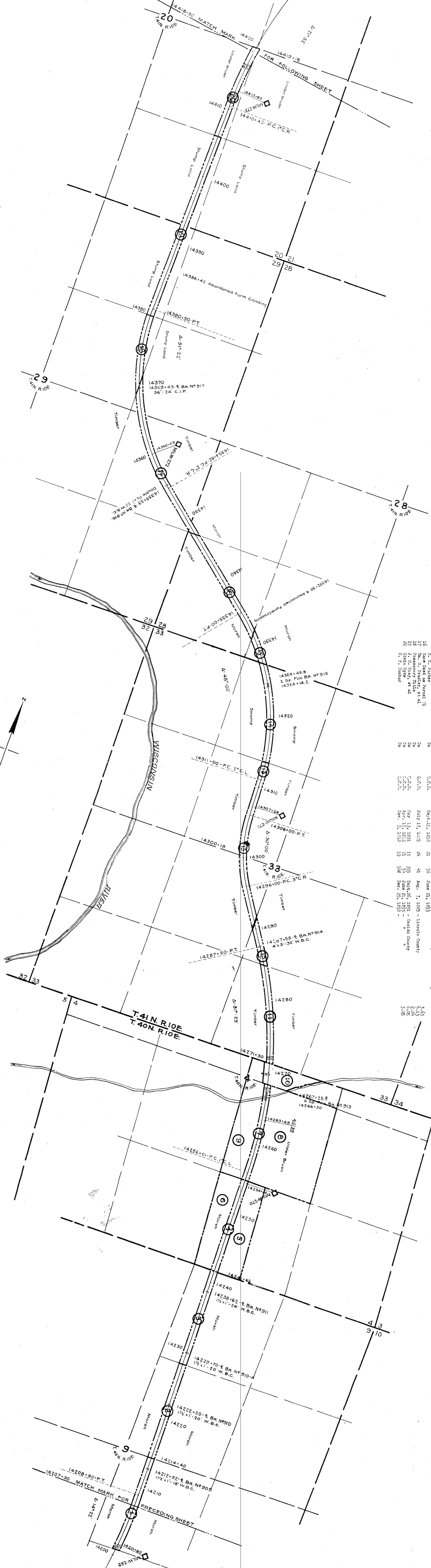


NO.	OWNER	DATE	RECORD	REMARKS	A.R.A.
1	Am. O'Connor	Mar. 7, 1892	119	1892-1894	1180
2	Am. O'Connor	Oct. 27, 1892	308	1892-1894	1180
3	Frank C. Fanning	Nov. 25, 1892	197	1892-1894	1180
4	Reservoir & Irrigation Co.	Sept. 20, 1892	303	1892-1894	1180
5	The Bank of Chicago	Mar. 7, 1892	119	1892-1894	1180
6	Reservoir & Irrigation Co.	Nov. 25, 1892	303	1892-1894	1180
7	Reservoir & Irrigation Co.	Nov. 25, 1892	303	1892-1894	1180
8	Reservoir & Irrigation Co.	Nov. 25, 1892	303	1892-1894	1180
9	Reservoir & Irrigation Co.	Nov. 25, 1892	303	1892-1894	1180
10	Reservoir & Irrigation Co.	Nov. 25, 1892	303	1892-1894	1180

**RIGHT OF WAY AND TRACK MAP**  
**CHICAGO AND NORTH-WESTERN RAILWAY**  
 OPERATED BY THE  
**C. & N. W. RY. CO.**  
**ASHLAND DIVISION**  
**ELAND, WIS. TO STATE LINE, MICH.**  
 STA. 15936+10 TO STA. 14207+30  
 SCALE: 1" = 400 FT.  
 JUNE 30, 1917  
 OFFICE OF CHIEF ENGINEER  
 CHICAGO, ILL.







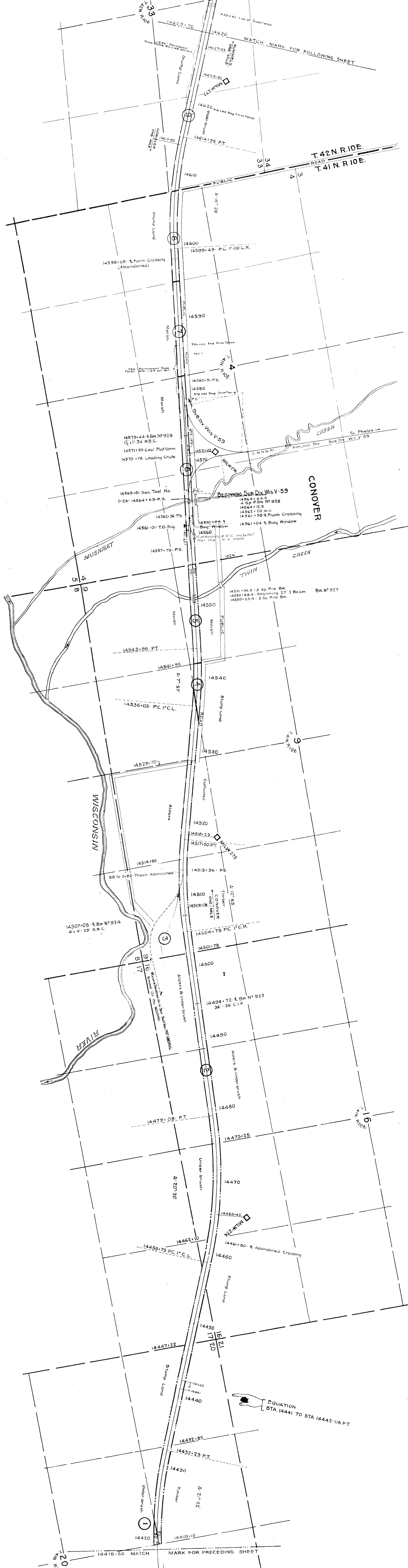
No.	Owner	Acres	Map	Year	County
1	Alfred I. Gray	1.61	100	1892	Onitsha County
2	At Earl's Corp. et al	3.12	57	1892	Onitsha County
3	State of Wisconsin	3.12	57	1892	Onitsha County
4	Thomas H. Scott	3.02	58	1892	Onitsha County
5	Charles St. Collins	3.01	58	1892	Onitsha County
6	Samuel J. Perry et al	3.11	58	1892	Onitsha County
7	James H. Gray et al	3.11	58	1892	Onitsha County
8	James H. Gray et al	3.11	58	1892	Onitsha County
9	Samuel J. Perry et al	3.11	58	1892	Onitsha County
10	Samuel J. Perry et al	3.11	58	1892	Onitsha County
11	Samuel J. Perry et al	3.11	58	1892	Onitsha County
12	Alexander Stewart et al	3.11	58	1892	Onitsha County
13	Thomas H. Scott	3.11	58	1892	Onitsha County
14	Samuel J. Perry et al	3.11	58	1892	Onitsha County
15	Alexander Stewart et al	3.11	58	1892	Onitsha County
16	Samuel J. Perry et al	3.11	58	1892	Onitsha County
17	Samuel J. Perry et al	3.11	58	1892	Onitsha County
18	Samuel J. Perry et al	3.11	58	1892	Onitsha County
19	Samuel J. Perry et al	3.11	58	1892	Onitsha County
20	Samuel J. Perry et al	3.11	58	1892	Onitsha County

RIGHT OF WAY AND TRACK MAP  
CHICAGO AND NORTH-WESTERN RAILWAY  
OPERATED BY THE  
C. & N. W. RY. CO.  
ASHLAND DIVISION  
ELAND, WIS. TO STATE LINE, MICH.  
STA. 14207+30 TO STA. 14418+50  
SCALE: 1 IN. = 400 FT.  
OFFICE OF CHIEF ENGINEER  
JUNE 30, 1917.  
CHICAGO, ILL.

Sheet No. 22 of 29 C. & N. W. Ry.  
From Survey Station 14207+30  
to Survey Station 14418+50  
25-P. 14-S.  
Validation Engineer  
WIS. V-54  
22

MAILED  
CHECKED  
DATE



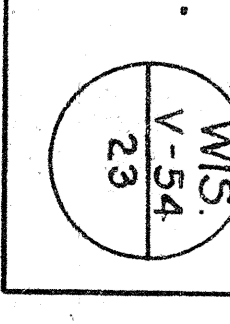


NO.	OWNER	DATE	REMARKS	AREA
1	Thomas B. Scott et al	Apr 12, 1892	Q.C.D. - Oasika County	26.54
2	Thomas B. Scott et al	Dec 16, 1891	Q.C.D. - Ileshia County	26.54
3	William Bradley et al	July 17, 1885	Q.C.D.	26.54
4	Same as at Parcel #2	Nov 19, 1882	Q.C.D. - Oasika County	1.32
5	John G. Stoney, et al	Nov 17, 1885	Q.C.D.	6.00
6	Th. Bradley et al	July 17, 1885	Q.C.D.	2.00
7	Th. Bradley et al	July 28, 1872	Q.C.D.	2.00
8	Th. Bradley et al	July 28, 1872	Q.C.D.	2.00
9	Th. Bradley et al	July 28, 1872	Q.C.D.	6.37

Sheet No 23 of 32 C & N.W. Ry  
 from Survey Station 14418+50  
 to Survey Station 14629+70  
 23-P. I.S.S.  
 Valuation Engineer

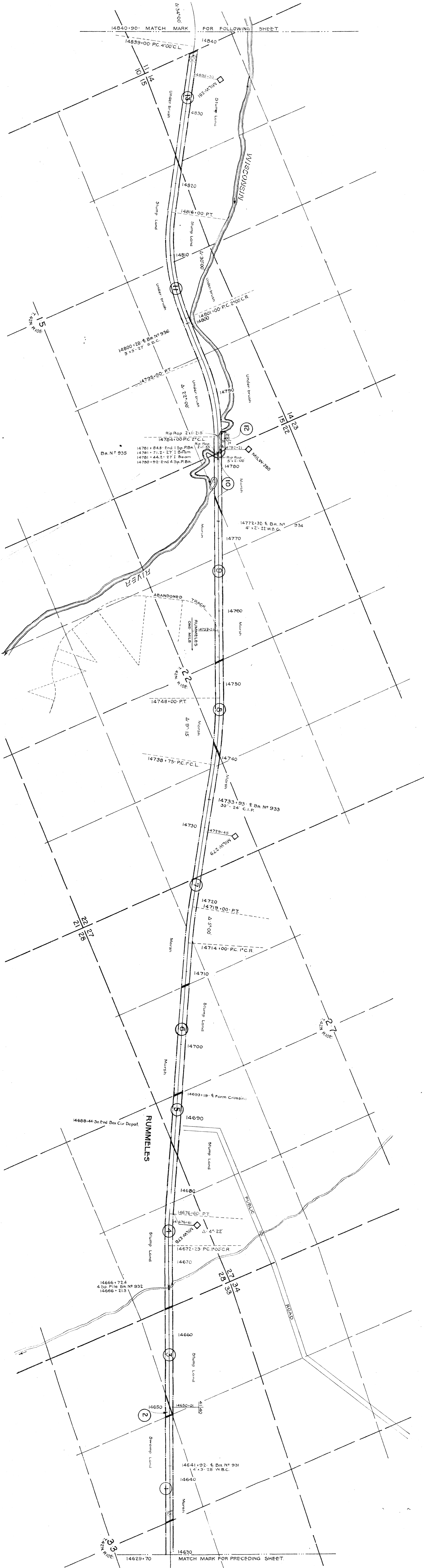
**RIGHT OF WAY AND TRACK MAP**  
**CHICAGO AND NORTH-WESTERN RAILWAY**  
 OPERATED BY THE  
**C. & N.-W. RY. CO.**  
 ASHLAND DIVISION  
**ELAND, WIS. TO STATE LINE, MICH.**  
 STA. 14418+50 TO STA. 14629+70  
 SCALE: 1 IN. = 400 FT.  
 JUNE 30, 1917.  
 OFFICE OF CHIEF ENGINEER  
 CHICAGO, ILL.

PLANNED C.M. OCT. 5, 1916  
 TRACKED R.A.W. OCT. 17, 1916  
 CHECKED C.W.B. OCT. 18, 1916





PLASTER CURB OCT 7 1916  
CHANGES CURB OCT 1916

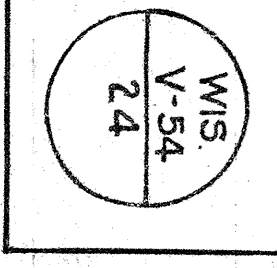


NO.	SECTION	DATE	BY	REVISION	DATE	BY	REVISION
1	Thomas D. Scott	Nov 29, 1892	28	July 27, 1895 - Lincoln County			
2	A. L. Cary, et al	Nov 29, 1892	11	July 27, 1895 - Lincoln County			
3	H. G. Holmbeck	Nov 29, 1892	24	July 27, 1895 - Lincoln County			
4	Thomas D. Scott	Nov 29, 1892	19	July 27, 1895 - Lincoln County			
5	Landlord & Lumber Co.	Nov 29, 1892	15	July 27, 1895 - Lincoln County			
6	A. L. Cary et al	Nov 29, 1892	9	July 27, 1895 - Lincoln County			
7	A. L. Cary et al	Nov 29, 1892	9	July 27, 1895 - Lincoln County			
8	A. L. Cary et al	Nov 29, 1892	9	July 27, 1895 - Lincoln County			
9	A. L. Cary et al	Nov 29, 1892	9	July 27, 1895 - Lincoln County			
10	A. L. Cary et al	Nov 29, 1892	9	July 27, 1895 - Lincoln County			
11	A. L. Cary et al	Nov 29, 1892	9	July 27, 1895 - Lincoln County			
12	Thomas D. Scott	Nov 29, 1892	28	July 27, 1895 - Lincoln County			
13	Thomas D. Scott	Nov 29, 1892	28	July 27, 1895 - Lincoln County			

Sheet No 24 of 39 C & N.W. Ry  
from Survey Station 14629+70  
to Survey Station 14840+90  
25-P. 14-S.  
Valuation Engineer

RIGHT OF WAY AND TRACK MAP  
CHICAGO AND NORTH-WESTERN RAILWAY  
OPERATED BY THE  
C. & N.W. RY. CO.  
ASHLAND DIVISION  
ELAND, WIS. TO STATE LINE, MICH.

STA. 14629+70 TO STA. 14840+90  
SCALE: 1"=400 FT.  
JUNE 30, 1917.  
OFFICE OF CHIEF ENGINEER  
CHICAGO, ILL.

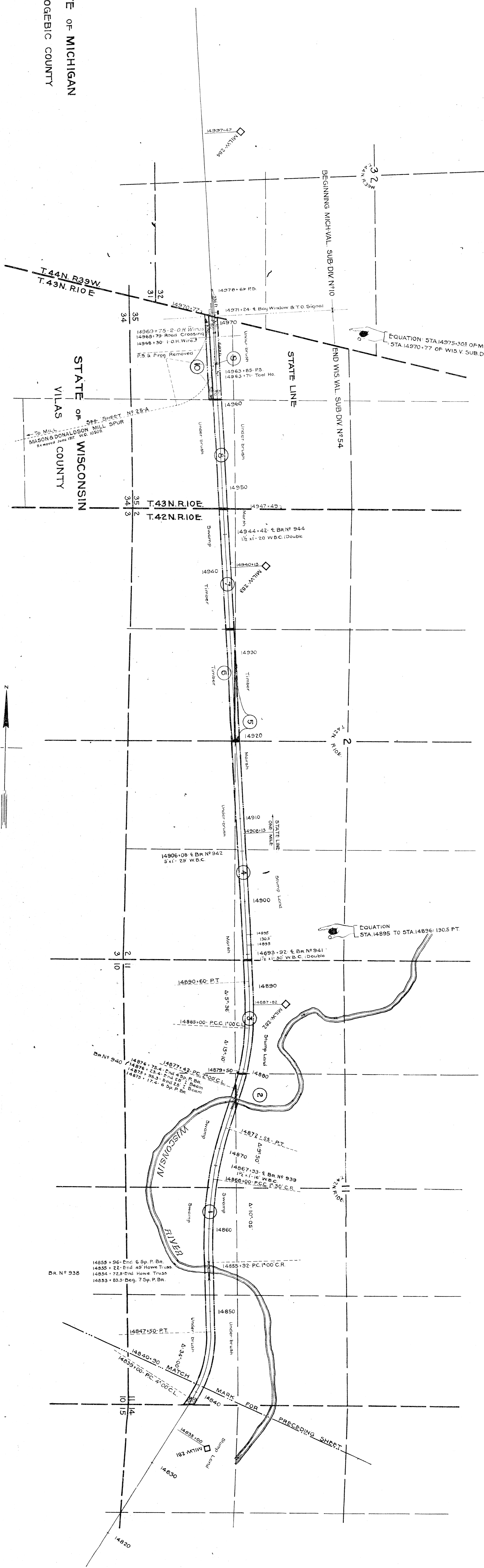


MS  
V. 34  
24



STATE OF MICHIGAN  
GOGEBIC COUNTY

STATE OF WISCONSIN  
VILAS COUNTY



Sheet No. 25 of 59 C. & N.W. Ry.  
From Survey Station 14840+90  
to Survey Station 14970+77  
25-P. 14-S.  
Validation Engineer

RIGHT OF WAY AND TRACK MAP  
CHICAGO AND NORTH-WESTERN RAILWAY  
OPERATED BY THE  
C. & N.W. RY. CO.  
ASHLAND DIVISION  
ELAND, WIS. TO STATE LINE, MICH.  
STA. 14840+90 TO STA. 14970+77  
SCALE: 1 IN. = 400 FT.  
OFFICE OF CHIEF ENGINEER  
JUNE 30, 1917.  
CHICAGO, ILL.

Plotted C.V.B. Oct. 10, 1916  
Checked R.A.M. Oct. 16, 1916  
Contract C.S. 8 Oct. 1916

