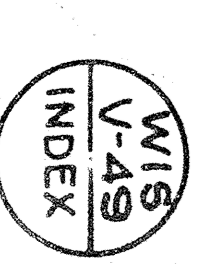
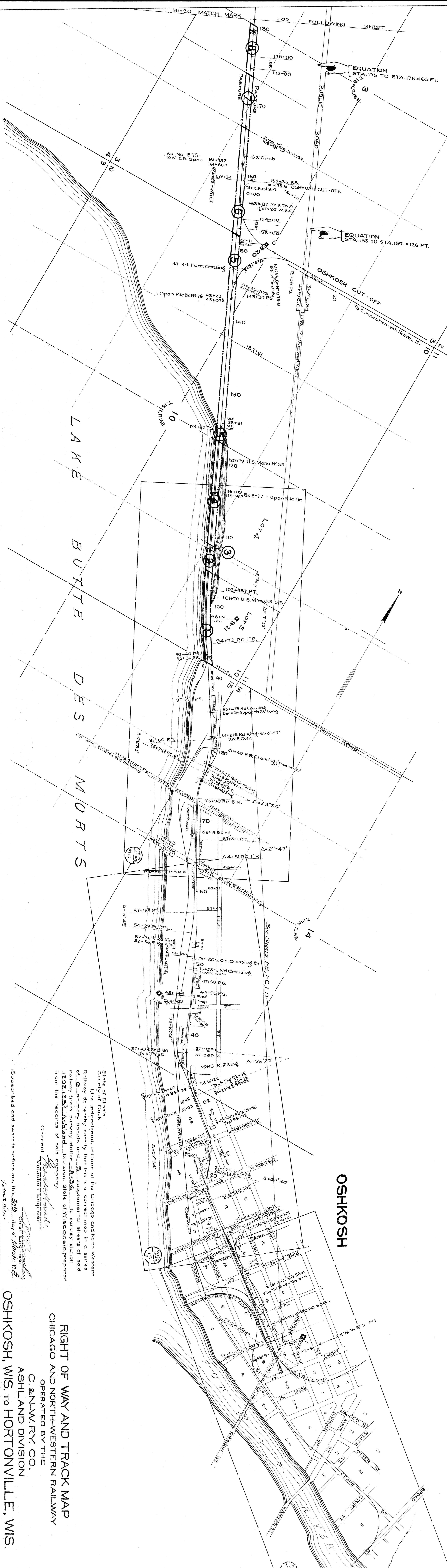


CHICAGO AND NORTH-WESTERN RAILWAY
 OPERATED BY THE
 C. & N. W. RY. CO.
 ASHLAND DIVISION
 OSHKOSH, WIS. TO HORTONVILLE, WIS.
 STA. -8+36 TO STA. 1202+25³
 SCALE 1/4" = 400 FT.
 OFFICE OF CHIEF ENGINEER
 CHICAGO, ILL.



PLATTED - R.G.C. - JULY 17, 1916.
 TRACED - W.V.C. - AUG. 7, 1916.
 CHECKED - R.G.C. - AUG. 18, 1916.



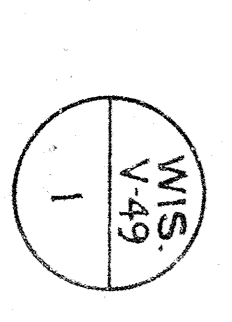
L A K E
 B U T T E
 D E S
 M O U R T S

OSHKOSH

NO.	CHANGES	DATE	BY	REASON
1	City of Oshkosh	JULY 7, 1915	W.V.C.	Check Plans
2	City of Oshkosh	AUG. 27, 1915	W.V.C.	Check Plans
3	John R. Hamble, et al	SEP. 1, 1915	W.V.C.	Check Plans
4	R. R. Edgerton	SEP. 1, 1915	W.V.C.	Check Plans
5	Commissioner Rogers	SEP. 1, 1915	W.V.C.	Check Plans
6	Geo. Rogers	SEP. 1, 1915	W.V.C.	Check Plans
7	Thomas A. Rogers	SEP. 1, 1915	W.V.C.	Check Plans
8	Geo. Rogers	SEP. 1, 1915	W.V.C.	Check Plans

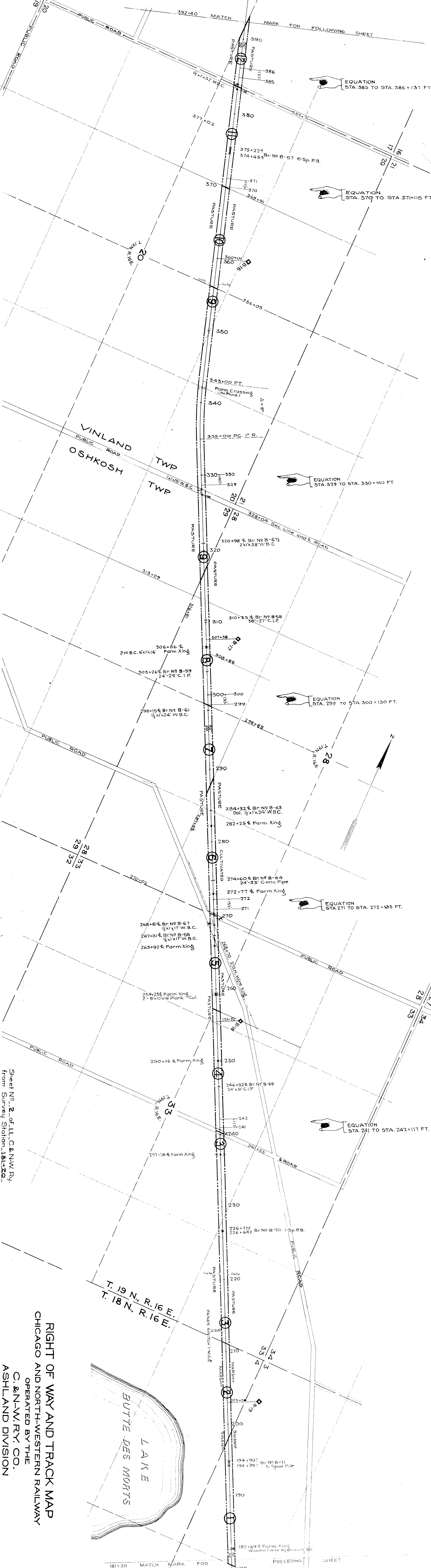
State of Illinois
 County of Cook
 I, the undersigned, officer of the Chicago and North Western
 Railway do hereby certify that this is a correct map in a series
 of 6 primary sheets and 5 supplemental sheets of said
 railway from survey station 28+36 to survey station
 1202+25. Ashland, Division, State of Wisconsin prepared
 from the records of said company.
 Correct Valuation Engineer
 W. V. C. Ashland
 Chief Engineer
 W. V. C. Ashland
 Subscribed and sworn to before me, this 30th day of March, 1916.
 Y. A. B. B. J. J.
 Notary Public for the
 State of Illinois

RIGHT OF WAY AND TRACK MAP
 CHICAGO AND NORTH-WESTERN RAILWAY
 OPERATED BY THE
 C. & N. W. RY. CO.
 ASHLAND DIVISION
 OSHKOSH, WIS. TO HORTONVILLE, WIS.
 SCALE 1 IN. = 400 FT.
 STA. -8+36 TO STA. 181+20
 JUNE 30, 1917.
 OFFICE OF CHIEF ENGINEER
 CHICAGO, ILL.



1
 WIS
 V-49

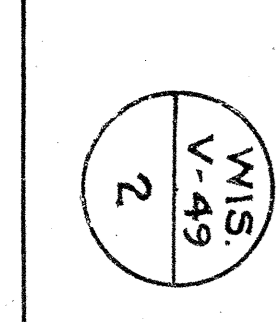
PLANNED - R.G.C. - JULY 19-1916
 TRACKS - W.W.C. - AUG. 8-1916
 CHECKED - R.G.C. - AUG. 16, 1916

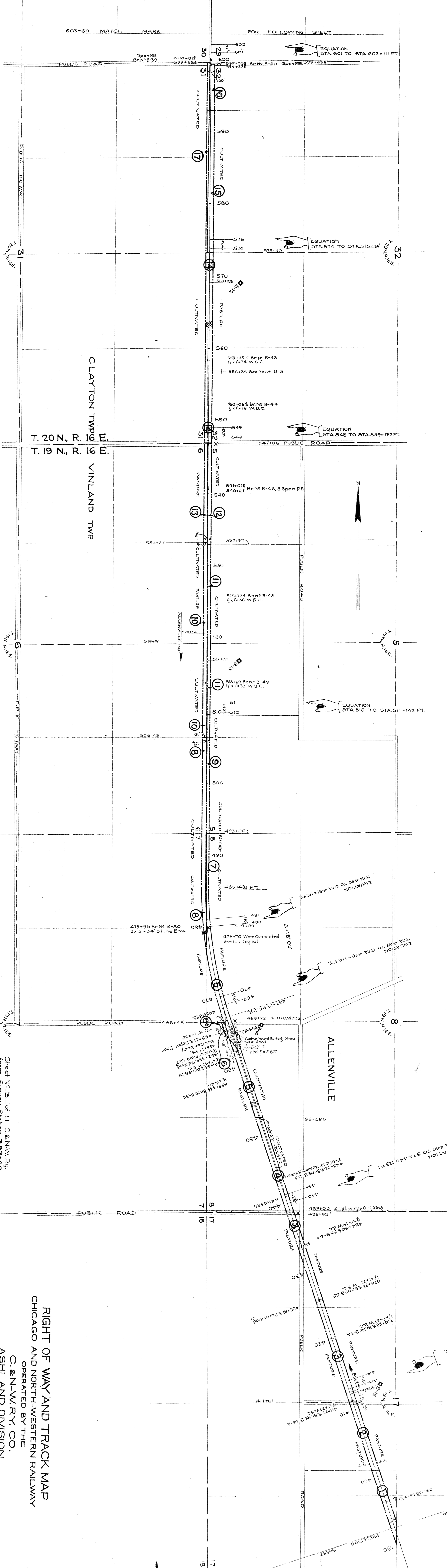


NO.	DESCRIPTION	DATE	BY	REMARKS
1	See Report			
2	Theodore Orbe			
3	John Ry			
4	Charles J. ...			
5	Reservoir No. 1			
6	Alton Field, et al			
7	John ...			
8	John ...			
9	John ...			
10	John ...			
11	John ...			
12	John ...			

Sheet No. 2 of L.L.C. & N.W. Ry.
 from Survey Station 181+20
 to Survey Station 392+40
 G.P. S.S. Validation Engineer

RIGHT OF WAY AND TRACK MAP
CHICAGO AND NORTH-WESTERN RAILWAY
 OPERATED BY THE
C. & N.W. RY. CO.
ASHLAND DIVISION
OSHKOSH, WIS. TO HORTONVILLE, WIS.
 STA. 181+20 TO STA. 392+40
 SCALE 1 IN. = 400 FT.
 OFFICE OF CHIEF ENGINEER
 CHICAGO, ILL.





NO.	SECTION	DATE	FROM	TO	AREA
1.	Harry Pratt	Aug 26 1879	32	30	1.19
2.	Charles Pratt	Aug 26 1879	32	30	2.12
3.	F. H. Allen	Aug 26 1879	32	30	6.42
4.	Oliver Burnett & Howard	Aug 26 1879	32	30	2.16
5.	F. H. Allen	Aug 26 1879	32	30	
6.	T. B. Allen	Aug 26 1879	32	30	
7.	John Hecker	Aug 26 1879	32	30	
8.	John Hecker	Aug 26 1879	32	30	
9.	John Hecker	Aug 26 1879	32	30	
10.	Osceola C. Lindsey	Aug 26 1879	32	30	
11.	Samuel A. Madole	Aug 26 1879	32	30	
12.	Samuel A. Madole	Aug 26 1879	32	30	
13.	Samuel A. Madole	Aug 26 1879	32	30	
14.	W. V. Glendana	Aug 26 1879	32	30	
15.	Joseph Pace	Aug 19 1879	32	30	3.58
16.	John Hecker	Aug 16 1879	32	30	1.50
17.	Ola Anderson	Oct 16 1879	32	30	

603+60 MATCH MARK FOR FOLLOWING SHEET

1 Span PB. Br. No. B-39

EQUATION STA. 601 TO STA. 602 = 111 FT.

EQUATION STA. 574 TO STA. 575 = 124 FT.

EQUATION STA. 548 TO STA. 549 = 132 FT.

EQUATION STA. 510 TO STA. 511 = 142 FT.

EQUATION STA. 470 TO STA. 471 = 116 FT.

EQUATION STA. 441 TO STA. 442 = 123 FT.

EQUATION STA. 414 TO STA. 415 = 119 FT.

CLAYTON TWP 19 E.

VINLAND TWP

T. 20 N., R. 16 E.

T. 19 N., R. 16 E.

ALLENVILLE TWP

ALLENVILLE

602

601

590

580

575

574

573+40

570

569+28

560

558+38 E. Br. No. B-43
1 1/2 x 1 1/2 W.B.C.

556+85 Sec Post B-3

550

549

548

547+06 PUBLIC ROAD

544+018 Br. No. B-46, 3 Span PB.

540+618

530

553+27

552+97

520

525+72 E. Br. No. B-48
1 1/2 x 1 1/2 W.B.C.

516+75

515+69 Br. No. B-49
1 1/2 x 1 1/2 W.B.C.

511

510

506+45

500

493+06

485+43 P.T.

480

479+95 Br. No. B-50
2 1/2 x 1 1/2 Stone Box

478+70 Wire Connected
switch signal

470

469+30

468+55

466+48

450

440

438+83

437+19 P.C. I.P.

436+55

435+38

434+19

433+02

432+19

431+02

430

429+19

428+02

427+19

426+02

425+19

424+02

423+19

422+02

421+19

420

419+19

418+02

417+19

416+02

415+19

414+02

413+19

412+02

411+19

410

409+19

408+02

407+19

406+02

405+19

404+02

403+19

402+02

401+19

400

399+19

398+02

397+19

396+02

395+19

394+02

393+19

392+02

391+19

390

389+19

388+02

387+19

386+02

385+19

384+02

383+19

382+02

381+19

380

379+19

378+02

377+19

376+02

375+19

374+02

373+19

372+02

371+19

370

369+19

368+02

367+19

366+02

365+19

364+02

363+19

362+02

361+19

360

359+19

358+02

357+19

356+02

355+19

354+02

353+19

352+02

351+19

350

349+19

348+02

347+19

346+02

345+19

344+02

343+19

342+02

341+19

340

339+19

338+02

337+19

336+02

335+19

334+02

333+19

332+02

331+19

330

329+19

328+02

327+19

326+02

325+19

324+02

323+19

322+02

321+19

320

319+19

318+02

317+19

316+02

315+19

314+02

313+19

312+02

311+19

310

309+19

308+02

307+19

306+02

305+19

304+02

303+19

302+02

301+19

300

299+19

298+02

297+19

296+02

295+19

294+02

293+19

292+02

291+19

290

289+19

288+02

287+19

286+02

285+19

284+02

283+19

282+02

281+19

280

279+19

278+02

277+19

276+02

275+19

274+02

273+19

272+02

271+19

270

269+19

268+02

267+19

266+02

265+19

264+02

263+19

262+02

261+19

260

259+19

258+02

257+19

256+02

255+19

254+02

253+19

252+02

251+19

250

249+19

248+02

247+19

246+02

245+19

244+02

243+19

242+02

241+19

240

239+19

238+02

237+19

236+02

235+19

234+02

233+19

232+02

231+19

230

229+19

228+02

227+19

226+02

225+19

224+02

223+19

222+02

221+19

220

219+19

218+02

217+19

216+02

215+19

214+02

213+19

212+02

211+19

210

209+19

208+02

207+19

206+02

205+19

204+02

203+19

202+02

201+19

200

199+19

198+02

197+19

196+02

195+19

194+02

193+19

192+02

191+19

190

189+19

188+02

187+19

186+02

185+19

184+02

183+19

182+02

181+19

180

179+19

178+02

177+19

176+02

175+19

174+02

173+19

172+02

171+19

170

169+19

168+02

167+19

166+02

165+19

164+02

163+19

162+02

161+19

160

159+19

158+02

157+19

156+02

155+19

154+02

153+19

152+02

151+19

150

149+19

148+02

147+19

146+02

145+19

144+02

143+19

142+02

141+19

140

139+19

138+02

137+19

136+02

135+19

134+02

133+19

132+02

131+19

130

129+19

128+02

127+19

126+02

125+19

124+02

123+19

122+02

121+19

120

119+19

118+02

117+19

116+02

115+19

114+02

113+19

112+02

111+19

110

109+19

108+02

107+19

106+02

105+19

104+02

103+19

102+02

101+19

100

99+19

98+02

97+19

96+02

95+19

94+02

93+19

92+02

91+19

90

89+19

88+02

87+19

86+02

85+19

84+02

83+19

82+02

81+19

80

79+19

78+02

77+19

76+02

75+19

74+02

73+19

72+02

71+19

70

69+19

68+02

67+19

66+02

65+19

64+02

63+19

62+02

61+19

60

59+19

58+02

57+19

56+02

55+19

54+02

53+19

52+02

51+19

50

49+19

48+02

47+19

46+02

45+19

44+02

43+19

42+02

41+19

40

39+19

38+02

37+19

36+02

35+19

34+02

33+19

32+02

31+19

30

29+19

28+02

27+19

26+02

25+19

24+02

23+19

22+02

21+19

20

19+19

18+02

17+19

16+02

15+19

14+02

13+19

12+02

11+19

10

9+19

8+02

7+19

6+02

5+19

4+02

3+19

2+02

1+19

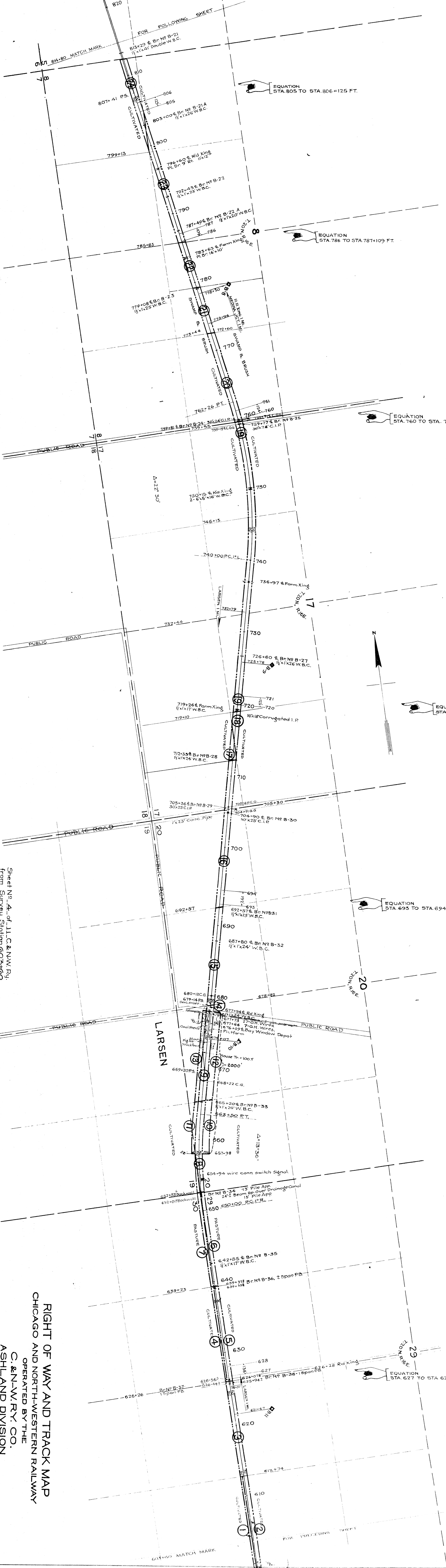
0

PLATTED - R. G. CALVERT, 2/1/1916
TRACED - V. W. C. - AUG. 10, 1916
CHECKED - R. G. C. - AUG. 17, 1916

RIGHT OF WAY AND TRACK MAP
CHICAGO AND NORTH-WESTERN RAILWAY
OPERATED BY THE
C. & N. W. RY. CO.
ASHLAND DIVISION
OSHKOSH, WIS. TO HORTONVILLE, WIS.
STA. 392+40 TO STA. 603+60
SCALE 1 IN. = 400 FT.
JUNE 30, 1917.
OFFICE OF CHIEF ENGINEER
CHICAGO, ILL.

Sheet No. 3 of 11 C. & N. W. Ry.
from Survey Station 392+40
to Survey Station 603+60
e.p. 5-5
Validation Engineer

WIS. V-49
3

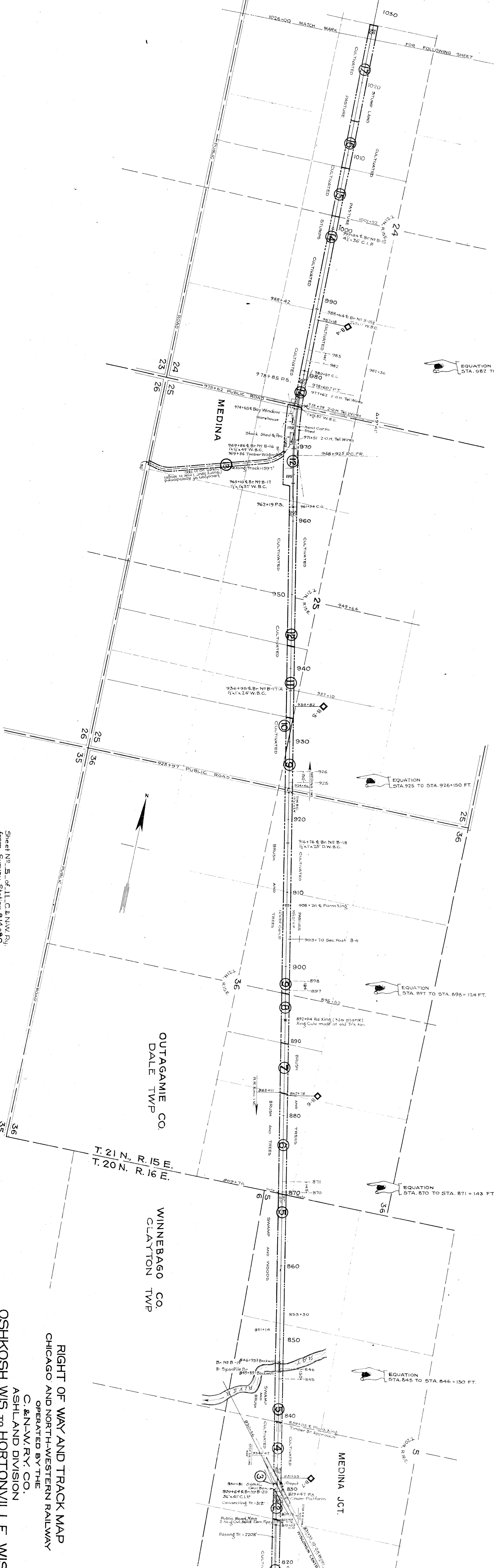


NO.	OWNER	ACREAGE	MARKED BY C.	MARKED BY	DATE	AREA	AREA
1.	Larsen	1.17	1917	1917	1917	1.17	1.17
2.
3.
4.
5.
6.
7.
8.
9.
10.
11.
12.
13.
14.
15.
16.
17.
18.
19.
20.
21.
22.
23.
24.

Sheet No. 4 of J.L.C. & N.W. Ry.
 from Survey Station 803+60
 to Survey Station 814+80.
 6-P. 3-S. Validation Engineer

RIGHT OF WAY AND TRACK MAP
 CHICAGO AND NORTH-WESTERN RAILWAY
 OPERATED BY THE
 C. & N.W. RY. CO.
 ASHLAND DIVISION
OSHKOSH, WIS. TO HORTONVILLE, WIS
 STA. 803+60 TO STA. 814+80
 SCALE 1 IN. = 400 FT.
 OFFICE OF CHIEF ENGINEER
 CHICAGO, ILL.
 JUNE 30, 1917.

PLATTED - R.O.G. - JULY 26, 1916.
 TRACED - V.W.C. - AUG. 14, 1916.
 CHECKED - R.G.C. - AUG. 16, 1916.



EQUATION
 STA. 982 TO STA. 983+141 FT.

EQUATION
 STA. 925 TO STA. 926+150 FT.

EQUATION
 STA. 897 TO STA. 898+124 FT.

EQUATION
 STA. 870 TO STA. 871+143 FT.

EQUATION
 STA. 845 TO STA. 846+150 FT.

NO.	GRANTOR	GRANTEE	INSTRUMENT	DATE	BOOK	PAGE	RECORD	DATE	REMARKS
1.	HAYTOR Anderson	Med. Co.	R. D.	Aug. 29, 1879	35	206	1879	July 29, 1885	
2.	Carlson Bondson	Do	Q.C.N.	Aug. 29, 1879	112	200	1879	July 29, 1885	
3.	Sam Deeds as Parcel #2	Do	Q.C.N.	Aug. 29, 1879	112	200	1879	July 29, 1885	
4.	Sam Deeds as Parcel #2	Do	Q.C.N.	Aug. 29, 1879	112	200	1879	July 29, 1885	
5.	Sam Deeds as Parcel #2	Do	Q.C.N.	Aug. 29, 1879	112	200	1879	July 29, 1885	
6.	Omber Larsen	Med. Co.	R. D.	Aug. 29, 1879	39	147	1879	Nov. 30, 1885	
7.	Andrew J. Anderson	Do	R. D.	Aug. 29, 1879	39	147	1879	Nov. 30, 1885	
8.	John E. Hayes	Do	R. D.	Aug. 29, 1879	39	147	1879	Nov. 30, 1885	
9.	John E. Hayes	Do	R. D.	Aug. 29, 1879	39	147	1879	Nov. 30, 1885	
10.	Philo Hunt	Do	R. D.	Aug. 29, 1879	39	147	1879	Nov. 30, 1885	
11.	Harry A. Rowles & Husband	Do	R. D.	Aug. 29, 1879	39	147	1879	Nov. 30, 1885	
12.	Andrew Rowles, et al	Do	R. D.	Aug. 29, 1879	39	147	1879	Nov. 30, 1885	
13.	John Stearns	Do	R. D.	Aug. 29, 1879	39	147	1879	Nov. 30, 1885	
14.	John Stearns	Do	R. D.	Aug. 29, 1879	39	147	1879	Nov. 30, 1885	
15.	Irauel Cole	Do	R. D.	Aug. 29, 1879	39	147	1879	Nov. 30, 1885	
16.	Isaac Madsen	Do	R. D.	Aug. 29, 1879	39	147	1879	Nov. 30, 1885	
17.	John W. Anderson	Do	R. D.	Aug. 29, 1879	39	147	1879	Nov. 30, 1885	

Sheet No. 5 of L.L.C. & NW. Ry.
 from Survey Station 814+80
 to Survey Station 1026+00
 G.F. S.S. Validation Engineer

OUTAGAMIE CO.
 DALE TWP.

WINNEBAGO CO.
 CLAYTON TWP.

T. 21 N., R. 15 E.
 T. 20 N., R. 16 E.

RIGHT OF WAY AND TRACK MAP
 CHICAGO AND NORTH-WESTERN RAILWAY
 OPERATED BY THE
 C. & N-W. RY. CO.
 ASHLAND DIVISION
OSHKOSH, WIS. TO HORTONVILLE, WIS.
 STA. 814+80 TO STA. 1026+00
 SCALE 1 IN. = 400 FT.
 JUNE 30, 1917.
 OFFICE OF CHIEF ENGINEER
 CHICAGO, ILL.

WIS
 V-49
 5



NO.	DATE	BY	REVISION
1.	Aug. 20, 1917	Sally Young	Asst. Eng.
2.	Sept. 2, 1917	Prudens Lloyd	Asst. Eng.
3.	Aug. 15, 1917	Oscar G. Jacobs	Asst. Eng.
4.	Aug. 14, 1917	Harry J. Jones	Asst. Eng.
5.	Aug. 13, 1917	Harry J. Jones	Asst. Eng.
6.	Aug. 13, 1917	Harry J. Jones	Asst. Eng.
7.	Aug. 13, 1917	Harry J. Jones	Asst. Eng.
8.	Aug. 13, 1917	Harry J. Jones	Asst. Eng.
9.	Aug. 13, 1917	Harry J. Jones	Asst. Eng.
10.	Aug. 13, 1917	Harry J. Jones	Asst. Eng.

Sheet No. 6 of 11 C. & N. W. Ry.
 from Survey Station 1022+00
 to Survey Station 1026+00
 C. P. S. S. Valuation Engineer

RIGHT OF WAY AND TRACK MAP
CHICAGO AND NORTH-WESTERN RAILWAY
 OPERATED BY THE
C. & N. W. RY. CO.
ASHLAND DIVISION
OSHKOSH, WIS. TO HORTONVILLE, WIS.
 STA. 1026+00 TO STA. 1022+25
 SCALE 1" = 400 FT.
 OFFICE OF CHIEF ENGINEER
 CHICAGO, ILL.
 JUNE 30, 1917