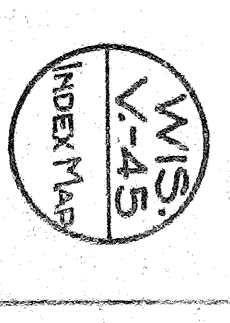
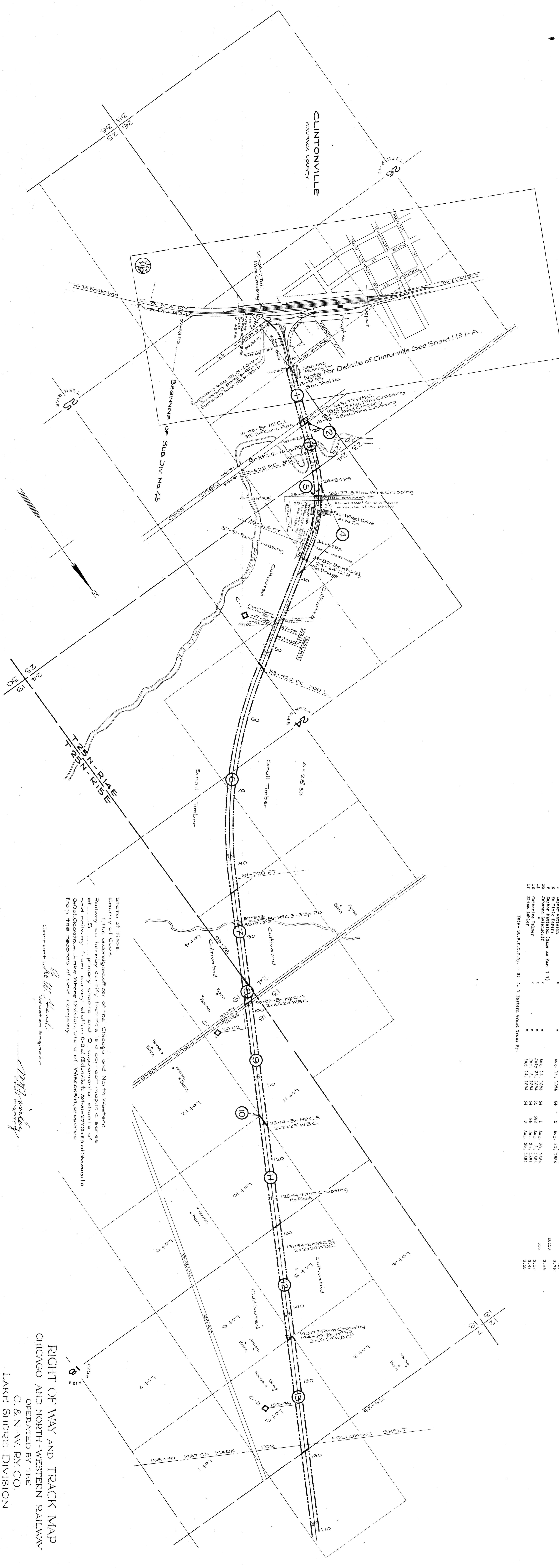


INDEX MAP
 CHICAGO AND NORTH WESTERN RAILWAY
 OPERATED BY THE
 C. & N. W. RY CO.
 LAKE SHORE DIVISION
 CLINTONVILLE, WIS TO OCONTO, WIS.

SCALE 1" = 1 MILE
 STA 0+00 TO STA 0+00
 OFFICE OF CHIEF ENGINEER
 CHICAGO, ILL.





Sta. V-45, Sauk County, Wis., Sheet 1.

NO.	GRANTEE	STATE	INSTRUMENT	DATE	BOOK	PAGE	DATE	REMARKS	Sq. Ft.	Ac.
1	H. Locke	St. P. E. O. T. Ry.	T. D. and	July 10, 1884	59	57	July 29, 1884	Subject to use as public street.	7000	1.57
2	Same Deeds as Parcel 1 and 3		St. P. E. O. T. Ry.	July 10, 1884	55	57	July 29, 1884	Street opened by Court Proc. 6000	6000	1.39
3	Quaker Mill		St. P. E. O. T. Ry.	July 10, 1884	55	57	July 29, 1884		612	0.14
4	Robert Mather		St. P. E. O. T. Ry.	July 10, 1884	55	57	July 29, 1884		612	0.14
5	Same Deeds as Parcel 4		St. P. E. O. T. Ry.	July 10, 1884	55	57	July 29, 1884		612	0.14
6	Same Deeds as Parcel 4		St. P. E. O. T. Ry.	July 10, 1884	55	57	July 29, 1884		612	0.14
7	Zopher Mattson		St. P. E. O. T. Ry.	July 10, 1884	55	57	July 29, 1884		612	0.14
8	W. H. Pappas (same as Parcel 1)		St. P. E. O. T. Ry.	July 10, 1884	55	57	July 29, 1884		612	0.14
9	Johnnie Mattson		St. P. E. O. T. Ry.	July 10, 1884	55	57	July 29, 1884		612	0.14
10	Johnnie Mattson		St. P. E. O. T. Ry.	July 10, 1884	55	57	July 29, 1884		612	0.14
11	Johnnie Mattson		St. P. E. O. T. Ry.	July 10, 1884	55	57	July 29, 1884		612	0.14
12	Johnnie Mattson		St. P. E. O. T. Ry.	July 10, 1884	55	57	July 29, 1884		612	0.14

Note: St. P. E. O. T. Ry. = St. P. & N. Eastern Great Trunk Ry.

State of Illinois
 County of Cook
 I, the undersigned, officer of the Chicago and North-Western Railway do hereby certify that this is a correct map in a series of 15 primary sheets and 9 supplemental sheets of said railway from survey station 0+0 of Clintonville to 72+51.2229+113 of Shawano to Great Oconto - Lake Shore Division, State of Wisconsin, prepared from the records of said company.

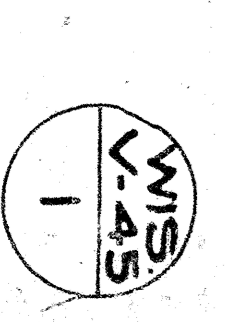
Correct: *W. H. Frank*
 Civilian Engineer

W. H. Frank
 Civil Engineer

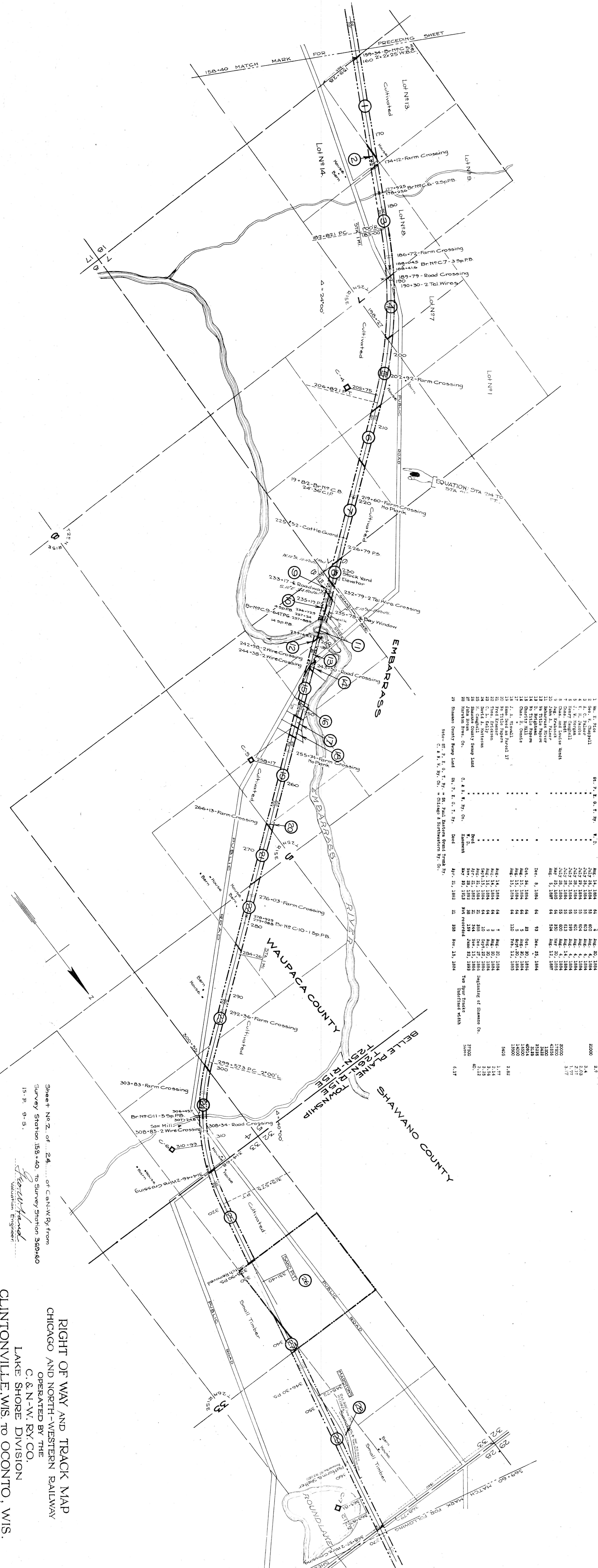
Subscribed and sworn to before me this 10th day of May, 1916
 Notary Public in and for the State of Illinois

My commission expires May 11th, 1918

RIGHT OF WAY AND TRACK MAP
 CHICAGO AND NORTH-WESTERN RAILWAY
 OPERATED BY THE
 C. & N.-W. RY. CO.
 LAKE SHORE DIVISION
 CLINTONVILLE, WIS. TO OCCONTO, WIS.
 STA. 0+00 TO STA. 158+40
 SCALE 1 IN. = 400 FT.
 OFFICE OF CHIEF ENGINEER
 CHICAGO, ILL. JUNE 30, 1917



PLATTED SEP. 1-1916
 RECORDED SEP. 21-1916
 CHICAGO, ILL.

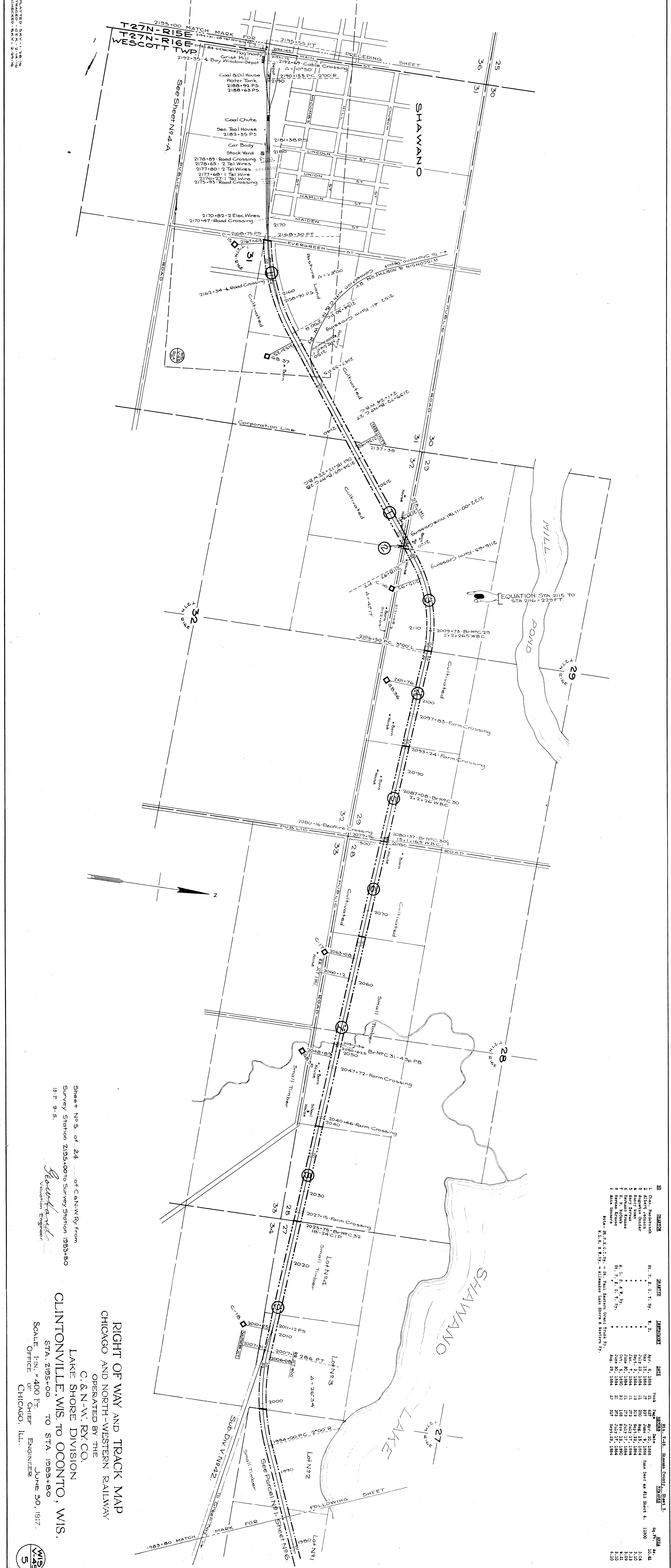


TABLE

NO.	GRANTEE	ST. P. E. O. T. R. Y.	W. D.	DATE	Book	Page	RECORD	DATE	AC.
1	W. E. Rice			Aug. 14, 1884	64	4	Aug. 20, 1884	2.00	2.3
2	Geo. F. Campbell			July 26, 1884	55	623	Aug. 4, 1884	3.4	2.09
3	A. C. Palmer			July 26, 1884	55	503	Aug. 4, 1884	2.17	3.17
4	J. W. Neenan			July 26, 1884	55	551	Aug. 4, 1884	3.17	3.17
5	J. W. Neenan			July 26, 1884	55	599	Aug. 4, 1884	3.17	3.17
6	Henry Campbell			July 26, 1884	55	600	Aug. 4, 1884	3.17	3.17
7	Chas. Knaback			July 26, 1884	55	620	Aug. 4, 1884	3.17	3.17
8	Chas. Knaback			July 26, 1884	55	620	Aug. 4, 1884	3.17	3.17
9	Chas. Knaback			July 26, 1884	55	620	Aug. 4, 1884	3.17	3.17
10	John A. Palmer			Aug. 5, 1887	54	524	Aug. 12, 1887	3.17	3.17
11	John A. Palmer			Aug. 5, 1887	54	524	Aug. 12, 1887	3.17	3.17
12	John A. Palmer			Aug. 5, 1887	54	524	Aug. 12, 1887	3.17	3.17
13	John A. Palmer			Aug. 5, 1887	54	524	Aug. 12, 1887	3.17	3.17
14	John A. Palmer			Aug. 5, 1887	54	524	Aug. 12, 1887	3.17	3.17
15	John A. Palmer			Aug. 5, 1887	54	524	Aug. 12, 1887	3.17	3.17
16	John A. Palmer			Aug. 5, 1887	54	524	Aug. 12, 1887	3.17	3.17
17	John A. Palmer			Aug. 5, 1887	54	524	Aug. 12, 1887	3.17	3.17
18	John A. Palmer			Aug. 5, 1887	54	524	Aug. 12, 1887	3.17	3.17
19	John A. Palmer			Aug. 5, 1887	54	524	Aug. 12, 1887	3.17	3.17
20	John A. Palmer			Aug. 5, 1887	54	524	Aug. 12, 1887	3.17	3.17
21	John A. Palmer			Aug. 5, 1887	54	524	Aug. 12, 1887	3.17	3.17
22	John A. Palmer			Aug. 5, 1887	54	524	Aug. 12, 1887	3.17	3.17
23	John A. Palmer			Aug. 5, 1887	54	524	Aug. 12, 1887	3.17	3.17
24	John A. Palmer			Aug. 5, 1887	54	524	Aug. 12, 1887	3.17	3.17
25	John A. Palmer			Aug. 5, 1887	54	524	Aug. 12, 1887	3.17	3.17
26	John A. Palmer			Aug. 5, 1887	54	524	Aug. 12, 1887	3.17	3.17
27	John A. Palmer			Aug. 5, 1887	54	524	Aug. 12, 1887	3.17	3.17
28	John A. Palmer			Aug. 5, 1887	54	524	Aug. 12, 1887	3.17	3.17
29	John A. Palmer			Aug. 5, 1887	54	524	Aug. 12, 1887	3.17	3.17
30	John A. Palmer			Aug. 5, 1887	54	524	Aug. 12, 1887	3.17	3.17
31	John A. Palmer			Aug. 5, 1887	54	524	Aug. 12, 1887	3.17	3.17
32	John A. Palmer			Aug. 5, 1887	54	524	Aug. 12, 1887	3.17	3.17
33	John A. Palmer			Aug. 5, 1887	54	524	Aug. 12, 1887	3.17	3.17
34	John A. Palmer			Aug. 5, 1887	54	524	Aug. 12, 1887	3.17	3.17
35	John A. Palmer			Aug. 5, 1887	54	524	Aug. 12, 1887	3.17	3.17

RIGHT OF WAY AND TRACK MAP
 CHICAGO AND NORTH-WESTERN RAILWAY
 OPERATED BY THE
 C. & N.-W. RY. CO.
 LAKE SHORE DIVISION
 CLINTONVILLE, WIS. TO OCONTO, WIS.
 STA. 158+40 TO STA. 369+60
 SCALE 1-IN. = 400 FT.
 OFFICE OF CHIEF ENGINEER
 CHICAGO, ILL.
 JUNE 30, 1917.



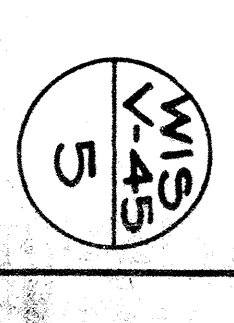


NO.	SECTION	DATE	BY	SCALE	REVISION
1	Chas. Rudolph	Apr. 6, 1885	W. D.	1:2000	See Sheet 4, 1880
2	Alvert Johnson	May 15, 1885	"	"	"
3	Augustus Olander	July 29, 1884	"	"	"
4	Harry Kermela	Jan. 7, 1884	"	"	"
5	Harry Kermela	Jan. 7, 1884	"	"	"
6	Herman Kermela	June 20, 1884	"	"	"
7	Herman Kermela	June 20, 1884	"	"	"
8	Herman Kermela	June 20, 1884	"	"	"
9	Anna Sommers	Aug. 29, 1884	"	"	"

Note - S.P.O. 1 By = St. Paul Eastern Grand Trunk Ry.
 K.L.M. & W.R. = Milwaukee Lake Shore & Western Ry.

Sheet No 5 of 24 of C.N.W. Ry. from
 Survey Station 2195+00 to Survey Station 1983+80
 I.S.F. 9-5.
Seawall
 Valuation Engineer

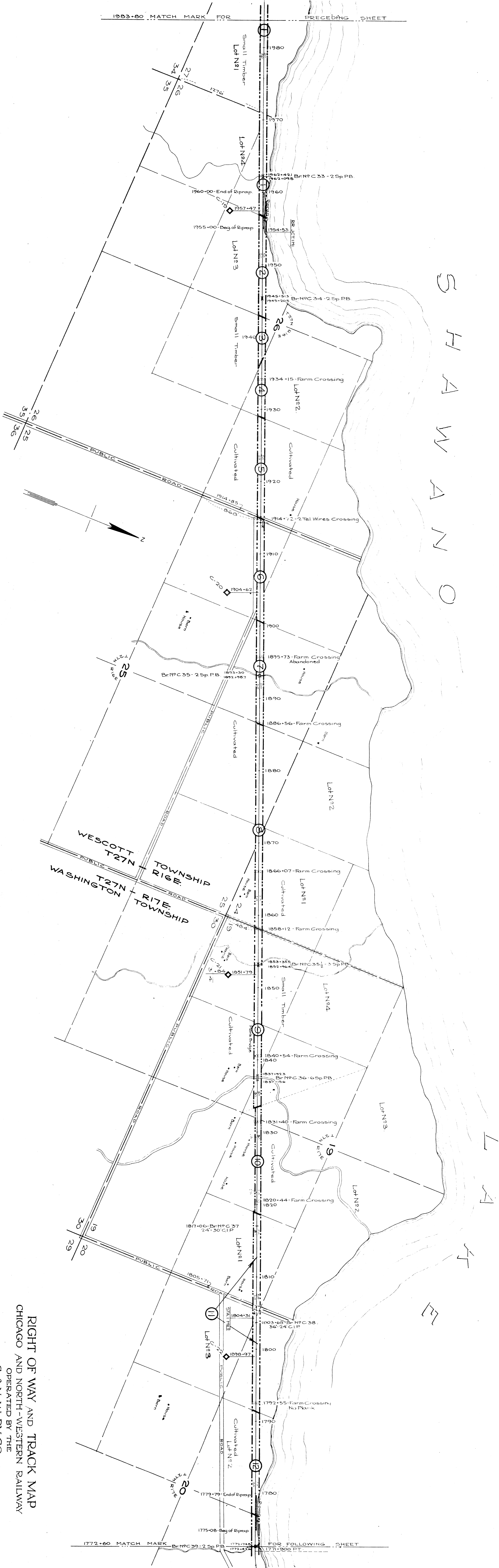
RIGHT OF WAY AND TRACK MAP
CHICAGO AND NORTH-WESTERN RAILWAY
 OPERATED BY THE
C. & N.W. RY. CO.
LAKE SHORE DIVISION
CLINTONVILLE, WIS. TO OCONTO, WIS.
 STA. 2195+00 TO STA. 1983+80
 SCALE 1-IN. = 400 FT.
 OFFICE OF CHIEF ENGINEER
 CHICAGO, ILL. JUNE 30, 1917.



PLATTED - SKY - 1 - 1916
 CHECKED - SKY - 2 - 20-16

PLATTED - 50% - 1-13-16
 CHECKED - 50% - 2-10-16
 DRAWING - 50% - 2-10-16

1983+80 MATCH MARK FOR PRECEDING SHEET



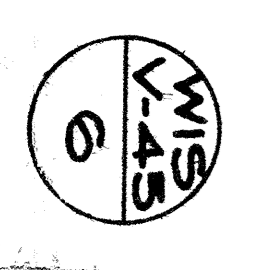
1875-80 ST. P. & N. W. RY. - ST. PAUL EASTERN GRADE TRUCK RAILWAY.

NO.	DESCRIPTION	DATE	BOOK	PAGE	SECTION	DATE	54-FT. AREA
1	D. H. Puffer	Mar. 24, 1884	21	611	18	1884	8.14
2	John H. Puffer	Mar. 9, 1885	21	611	18	1885	8.19
3	Chas. Beckler	Mar. 12, 1887	27	478	Mar. 24, 1887	1.41	
4	William Clark	Apr. 27, 1884	21	611	Mar. 18, 1884	1.70	
5	John Aspinwall	July 1, 1884	21	270	July 18, 1884	1.26	
6	John Aspinwall	July 1, 1884	21	269	July 18, 1884	1.26	
7	Anthony Berg	July 1, 1884	21	269	July 18, 1884	1.26	
8	Anthony Berg	July 1, 1884	21	269	July 18, 1884	1.26	
9	Anthony Berg	July 1, 1884	21	269	July 18, 1884	1.26	
10	Fred A. Brademan	July 17, 1884	24	75	Aug. 15, 1884	4.55	
11	Samuel Meyer	Aug. 19, 1884	21	607	Dec. 27, 1884	5.20	
12	Samuel Meyer	Aug. 19, 1884	21	607	Dec. 27, 1884	5.20	

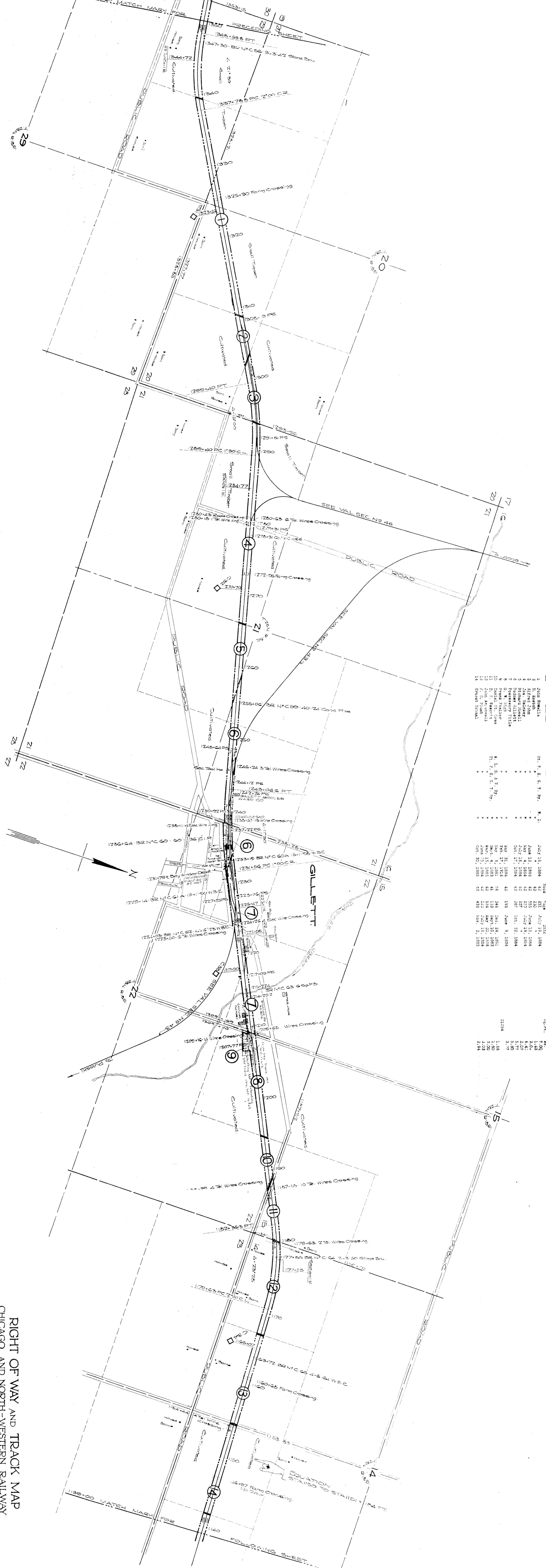
Sheet No. 6, of 24, of C. & N.W. Ry. from
 Survey Station 1883+80 to Survey Station 1772+60
 15-P. 9-S.

Ballard
 Valuation Engineer

RIGHT OF WAY AND TRACK MAP
 CHICAGO AND NORTH-WESTERN RAILWAY
 OPERATED BY THE
 C. & N.W. RY. CO.
 LAKE SHORE DIVISION
 CLINTONVILLE, WIS. TO OCONTO, WIS.
 STA. 1983+80 TO STA. 1772+60
 SCALE 1-IN. = 400 FT.
 OFFICE OF CHIEF ENGINEER
 CHICAGO, ILL. JUNE 30, 1917



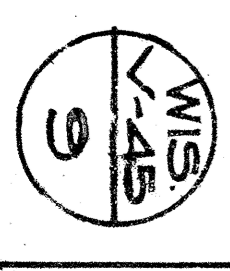
REPRODUCED FROM ORIGINAL SURVEY MAPS
 PREPARED BY - CHAS. E. BROWN



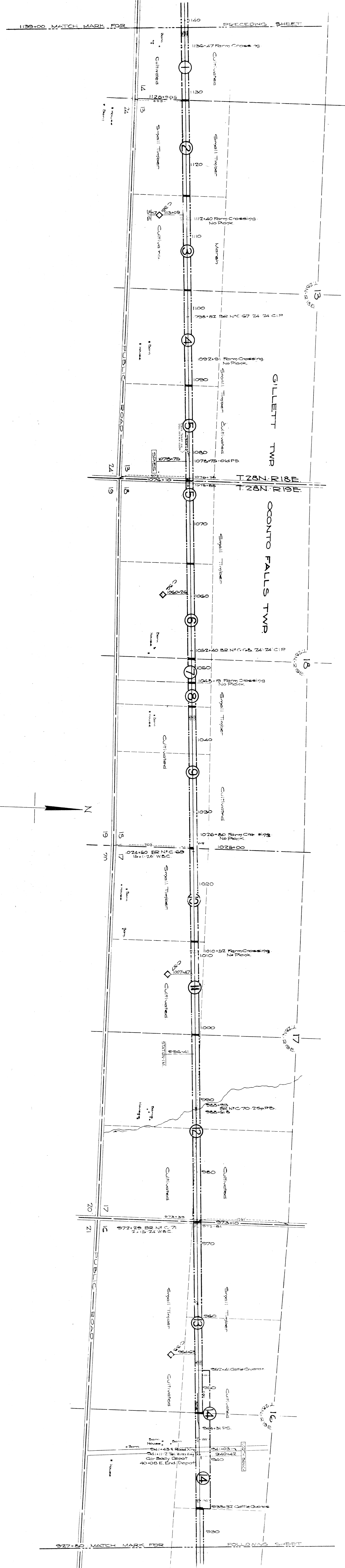
NO.	DATE	BY	REMARKS
1	July 12, 1884	John Bennett	St. F. & G. T. Ry.
2	July 12, 1884	Alfred John	W. D.
3	June 12, 1885	John Bennett	St. F. & G. T. Ry.
4	July 12, 1884	John Bennett	St. F. & G. T. Ry.
5	July 12, 1884	John Bennett	St. F. & G. T. Ry.
6	July 12, 1884	John Bennett	St. F. & G. T. Ry.
7	July 12, 1884	John Bennett	St. F. & G. T. Ry.
8	July 12, 1884	John Bennett	St. F. & G. T. Ry.
9	July 12, 1884	John Bennett	St. F. & G. T. Ry.
10	July 12, 1884	John Bennett	St. F. & G. T. Ry.
11	July 12, 1884	John Bennett	St. F. & G. T. Ry.
12	July 12, 1884	John Bennett	St. F. & G. T. Ry.
13	July 12, 1884	John Bennett	St. F. & G. T. Ry.
14	July 12, 1884	John Bennett	St. F. & G. T. Ry.

Sheet No. 24 of 24 - C. & N. W. Ry.
 from Survey Station 1380+20
 to Survey Station 1150+00
 15-P. 9-S.
 Division Engineer

RIGHT OF WAY AND TRACK MAP
 CHICAGO AND NORTH-WESTERN RAILWAY
 OPERATED BY THE
 C. & N. W. RY. CO.
 LAKE SHORE DIVISION
 CLINTONVILLE, WIS. TO OCONTO, WIS.
 SCALE 1-IN = 400 FT.
 STA. 1350 + 20 TO STA. 1150 + 00
 OFFICE OF CHIEF ENGINEER
 CHICAGO, ILL. JUNE 30, 1917



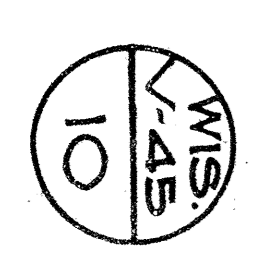
NO.	SECTION	DATE	BY	AREA
1	Davilla R. Holt	Nov 14, 1884	3. D.	2.97
2	Oconto County	Jan 17, 1882	3. D.	3.04
3	John W. McDaniel	June 25, 1884	W. D.	3.02
4	Charles W. D. Holt	June 26, 1884	W. D.	3.88
5	Davilla R. Holt	Sept. 14, 1886	W. D.	3.04
6	Passanoyville	July 13, 1884	W. D.	3.00
7	Passanoyville	Aug 20, 1883	W. D.	4.51
8	Passanoyville	Sept. 22, 1884	W. D.	2.96
9	Passanoyville	Oct. 20, 1882	W. D.	5.35
10	English Island	Dec. 22, 1884	W. D.	6.11
11	Mary Weaver	Dec. 22, 1884	W. D.	7.69
12	Anna Koberstadt	Dec. 22, 1884	W. D.	
13	Anna Koberstadt	Dec. 22, 1884	W. D.	

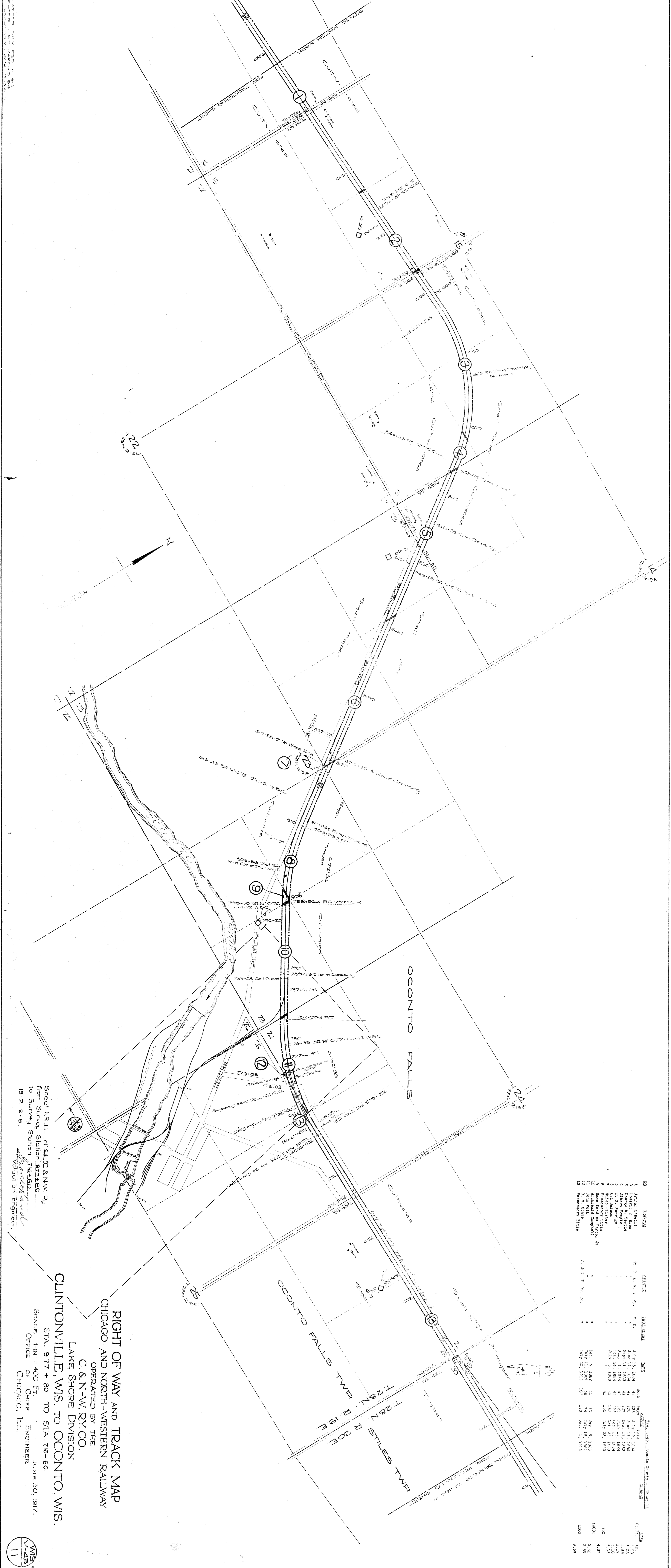


RIGHT OF WAY AND TRACK MAP
 CHICAGO AND NORTH-WESTERN RAILWAY
 OPERATED BY THE
 C. & N.-W. RY. CO.
 LAKE SHORE DIVISION
 CLINTONVILLE, WIS. TO OCONTO, WIS.

Sheet No. 10 of 24 - C. & N.-W. Ry.
 from Survey Station 1139+00
 to Survey Station 927+80
 15-P. 9-S.
 Minatation Engineer

SCALE 1-IN = 400 FT.
 OFFICE OF CHIEF ENGINEER
 CHICAGO, ILL.
 JUNE 30, 1917.

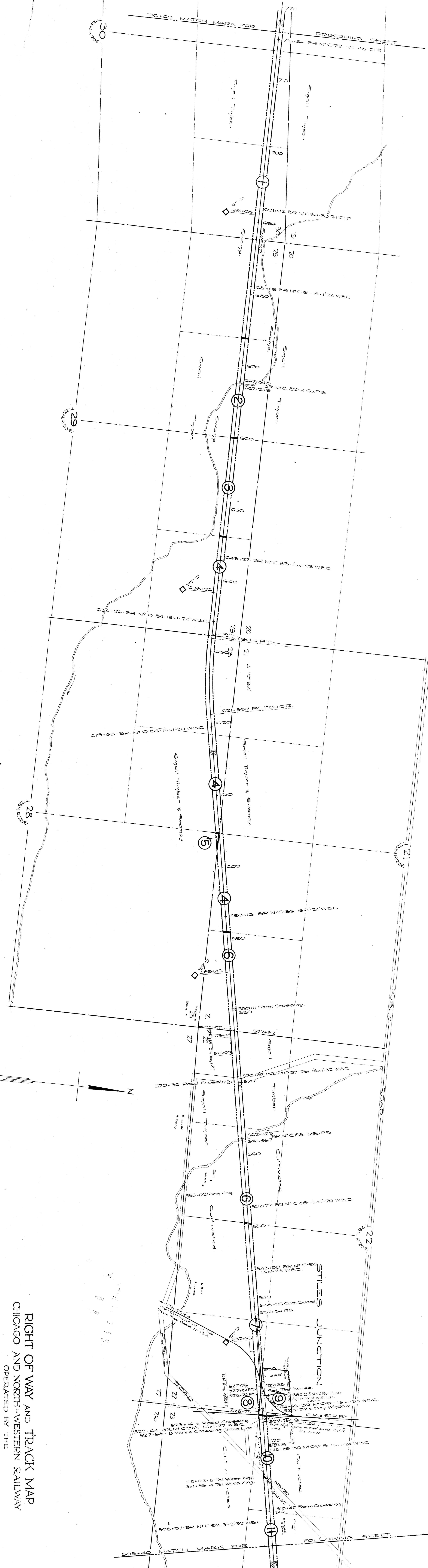




NO.	OWNER	DATE	ACRES	AMOUNT	DATE	ACRES	AMOUNT
1	Arthur O'Hall	July 15, 1884	40	200	July 15, 1884	40	200
2	Robert E. Rice	June 17, 1884	40	200	July 15, 1884	40	200
3	George W. Pease	Sept. 11, 1883	41	207	Dec. 19, 1883	41	207
4	H. R. Ferriss	July 1, 1884	41	207	July 15, 1884	41	207
5	U. R. Ferriss	July 6, 1883	41	207	July 15, 1884	41	207
6	U. R. Ferriss	July 6, 1883	41	207	July 15, 1884	41	207
7	U. R. Ferriss	July 6, 1883	41	207	July 15, 1884	41	207
8	U. R. Ferriss	July 6, 1883	41	207	July 15, 1884	41	207
9	Same land as Parcel 7						
10	Archibald Campbell	Sept. 9, 1882	41	10	May 9, 1883	1300	4.37
11	Archibald Campbell	July 11, 1887	46	14	July 18, 1887	1300	3.40
12	R. W. Stone	July 20, 1883	10	123	Oct. 1, 1883	1300	2.59
13	Possessory Title						9.49

RIGHT OF WAY AND TRACK MAP
 CHICAGO AND NORTH-WESTERN RAILWAY
 OPERATED BY THE
 C. & N.-W. RY. CO.
 LAKE SHORE DIVISION
 CLINTONVILLE, WIS. TO OCONTO, WIS.
 STA. 977 + 90 TO STA. 716 + 60
 SCALE 1-IN. = 400 FT.
 OFFICE OF CHIEF ENGINEER
 CHICAGO, ILL. JUNE 30, 1917.

PLANNED BY...
 DRAWN BY...
 CHECKED BY...
 11

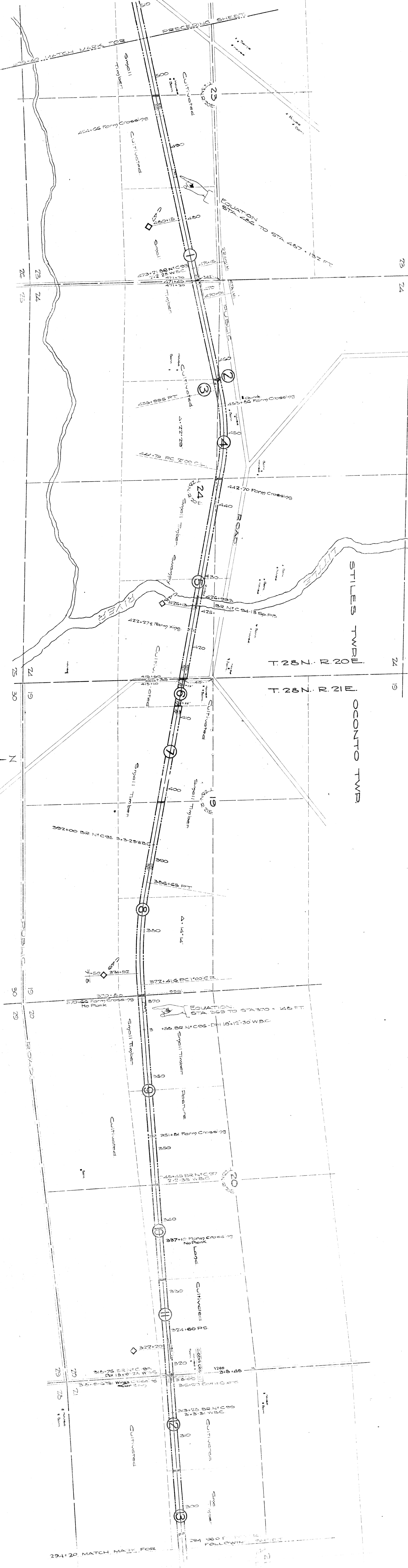


NO.	OWNER	DATE	ACRES	AMOUNT
1	Beville B. Hill	Sept. 14, 1884	52	4.37
2	Possessory Title	"	"	3.19
3	Margaret Lucas	Sept. 27, 1883	41	3.17
4	Adrian De	Nov. 22, 1883	51	12.54
5	John Leight	July 27, 1883	41	3.20
6	John Leight	"	13	5.34
7	John Leight	"	42	4.99
8	John Leight	"	58	2.05
9	John Leight	"	228	3.98
10	John Leight	"	"	"
11	John Leight	"	"	"
12	John Leight	"	"	"

RIGHT OF WAY AND TRACK MAP
 CHICAGO AND NORTH-WESTERN RAILWAY
 OPERATED BY THE
 C. & N.-W. RY. CO.
 LAKE SHORE DIVISION
 CLINTONVILLE, WIS. TO OCCONTO, WIS.
 STA. 716 + 60 TO STA. 505 + 40
 SCALE 1" = 400 FT.
 OFFICE OF CHIEF ENGINEER
 CHICAGO, ILL.

Sheet No. 12 of 24 C. & N.W. Ry
 from Survey Station 716+60
 to Survey Station 505+40
 15-P. 9-S.
 Valuation Engineer
 CHICAGO, ILL.

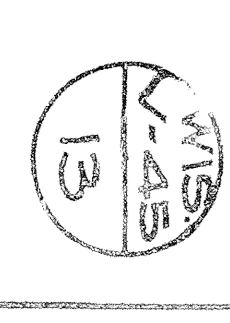
14 13
 23 24
 13 18
 24 19

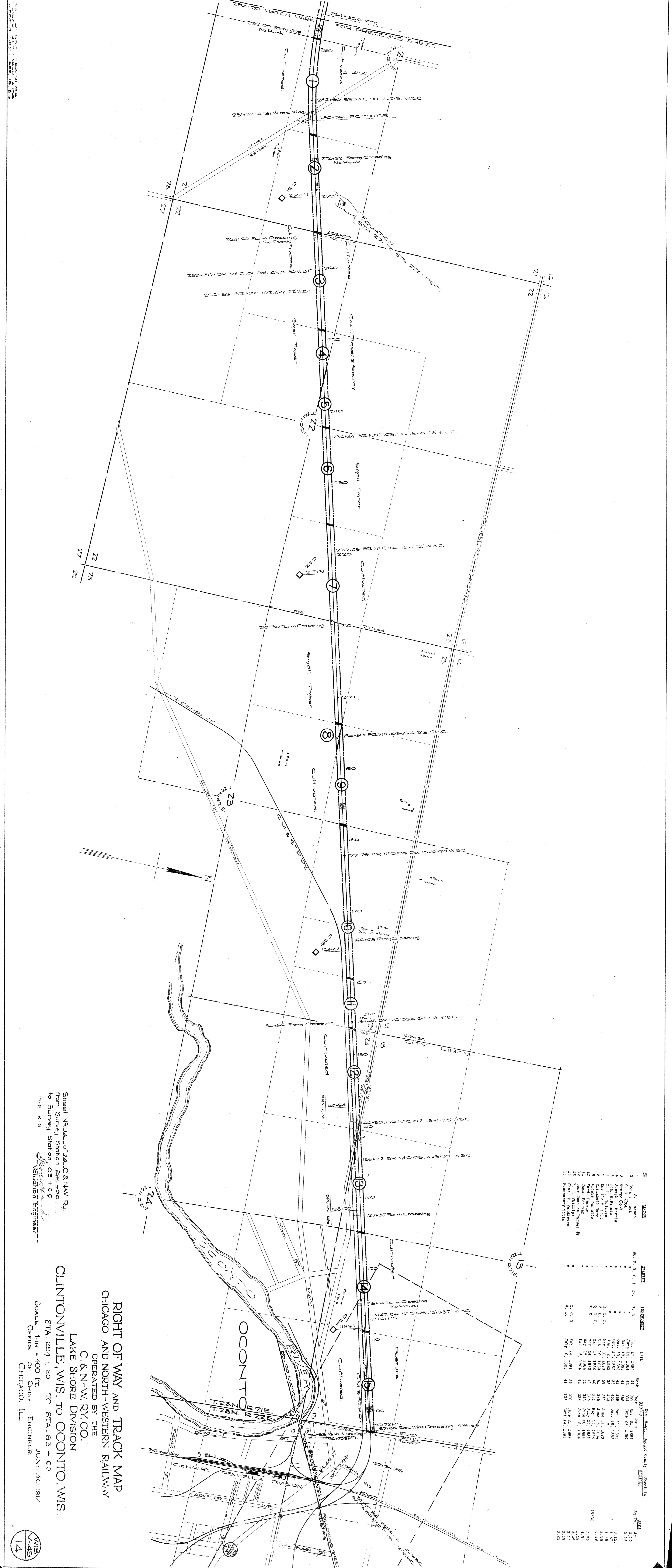


NO.	NAME	DATE	AMOUNT	REMARKS	AREA
1	Emilio R. Holt	Oct. 10, 1883	500	...	5.00
2	E. L. Dwyer	Sept. 20, 1883	100	...	1.00
3	W. L. S. & W. Ry.	Feb. 2, 1891	57	...	0.57
4	W. L. S. & W. Ry.	Jan. 9, 1894	41	...	0.41
5	W. L. S. & W. Ry.	Jan. 9, 1894	41	...	0.41
6	W. L. S. & W. Ry.	Jan. 9, 1894	41	...	0.41
7	W. L. S. & W. Ry.	Jan. 9, 1894	41	...	0.41
8	W. L. S. & W. Ry.	Jan. 9, 1894	41	...	0.41
9	W. L. S. & W. Ry.	Jan. 9, 1894	41	...	0.41
10	W. L. S. & W. Ry.	Jan. 9, 1894	41	...	0.41
11	W. L. S. & W. Ry.	Jan. 9, 1894	41	...	0.41
12	W. L. S. & W. Ry.	Jan. 9, 1894	41	...	0.41
13	W. L. S. & W. Ry.	Jan. 9, 1894	41	...	0.41

RIGHT OF WAY AND TRACK MAP
 CHICAGO AND NORTH-WESTERN RAILWAY
 OPERATED BY THE
 C. & N.-W. RY. CO.
 LAKE SHORE DIVISION
 CLINTONVILLE, WIS. TO OCONTO, WIS.
 STA. 505 + 40 TO STA. 294 + 20
 SCALE 1-IN = 400 FT.
 OFFICE OF CHIEF ENGINEER
 CHICAGO, ILL. JUNE 30, 1917

Sheet No. 13 of 24, C. & N.W. Ry.
 from Survey Station 294+20 to
 to Survey Station 505+40
 15-P. 9-5
 Valuation Engineer

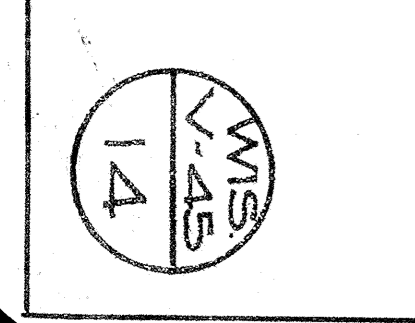


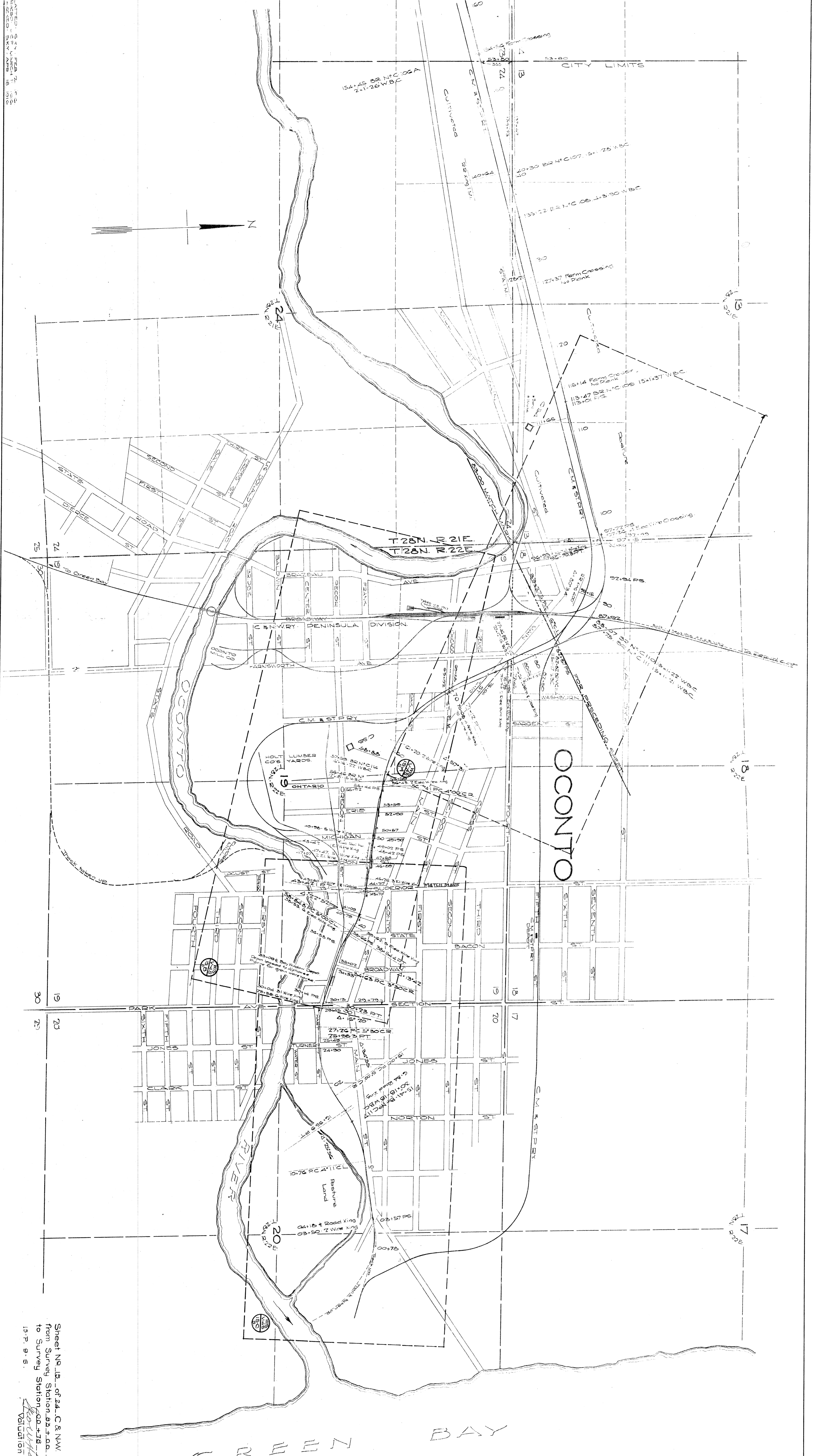


STATION	DATE	ACREAGE	AREA
1	1884	42	3.19
2	1884	42	3.19
3	1884	42	3.19
4	1884	42	3.19
5	1884	42	3.19
6	1884	42	3.19
7	1884	42	3.19
8	1884	42	3.19
9	1884	42	3.19
10	1884	42	3.19
11	1884	42	3.19
12	1884	42	3.19
13	1884	42	3.19
14	1884	42	3.19
15	1884	42	3.19

RIGHT OF WAY AND TRACK MAP
 CHICAGO AND NORTH-WESTERN RAILWAY
 OPERATED BY THE
 C. & N.-W. RY. CO.
 LAKE SHORE DIVISION
 CLINTONVILLE, WIS. TO OCCONTO, WIS.
 STA. 294 + 20 TO STA. 93 + 00
 SCALE 1" = 400 FT.
 OFFICE OF CHIEF ENGINEER
 CHICAGO, ILL.

Sheet No. 14 of 24, C. & N.W. Ry.
 from Survey Station 294+20 to
 to Survey Station 93+00
 15-P. 9-5
 Validation Engineer
 JUNE 30, 1917





Sheet No. 15, of 24, C & N.W. Ry
 from Survey Station 00+18 to 00+78
 to Survey Station 00+18 to 00+78
 15-F-9-5.
 Validation Engineer

RIGHT OF WAY AND TRACK MAP
CHICAGO AND NORTH-WESTERN RAILWAY
 OPERATED BY THE
 C. & N.-W. RY. CO.
 LAKE SHORE DIVISION
CLINTONVILLE, WIS. TO OCONTO, WIS.
 STA. 03 + 00 TO STA. 00 + 78
 SCALE 1-IN = 400 FT.
 OFFICE OF CHIEF ENGINEER
 CHICAGO, ILL.
 JUNE 30 1917.

