

NO.	GRANTOR	GRANTEE	INSTRUMENT	DATE	BOOK	PAGE	RECORD	REMARKS	AMOUNT
1.	John D. ...	W. O. B. & ...	...	June 20, 1905	86	619	...	...	1.72 Ac.
2.	...	...	...	...	...	...	...	...	...
3.	...	...	...	...	...	...	...	...	...
4.	...	...	...	...	...	...	...	...	...
5.	...	...	...	...	...	...	...	...	...
6.	...	...	...	...	...	...	...	...	...
7.	...	...	...	...	...	...	...	...	...
8.	...	...	...	...	...	...	...	...	...
9.	...	...	...	...	...	...	...	...	...
10.	...	...	...	...	...	...	...	...	...
11.	...	...	...	...	...	...	...	...	...
12.	...	...	...	...	...	...	...	...	...
13.	...	...	...	...	...	...	...	...	...
14.	...	...	...	...	...	...	...	...	...
15.	...	...	...	...	...	...	...	...	...

State of Illinois,  
County of Cook,  
I, the undersigned officer of the Chicago and North-Western  
Railway, do hereby certify that this is a correct map in a series  
of five primary sheets and 100 supplemental sheets of  
and five from survey station 677+93.9 to survey station  
697+74.2. Division, State of Wisconsin, prepared  
from the records of said company.

Correct: *Paul J. ...*  
Valuation Engineer

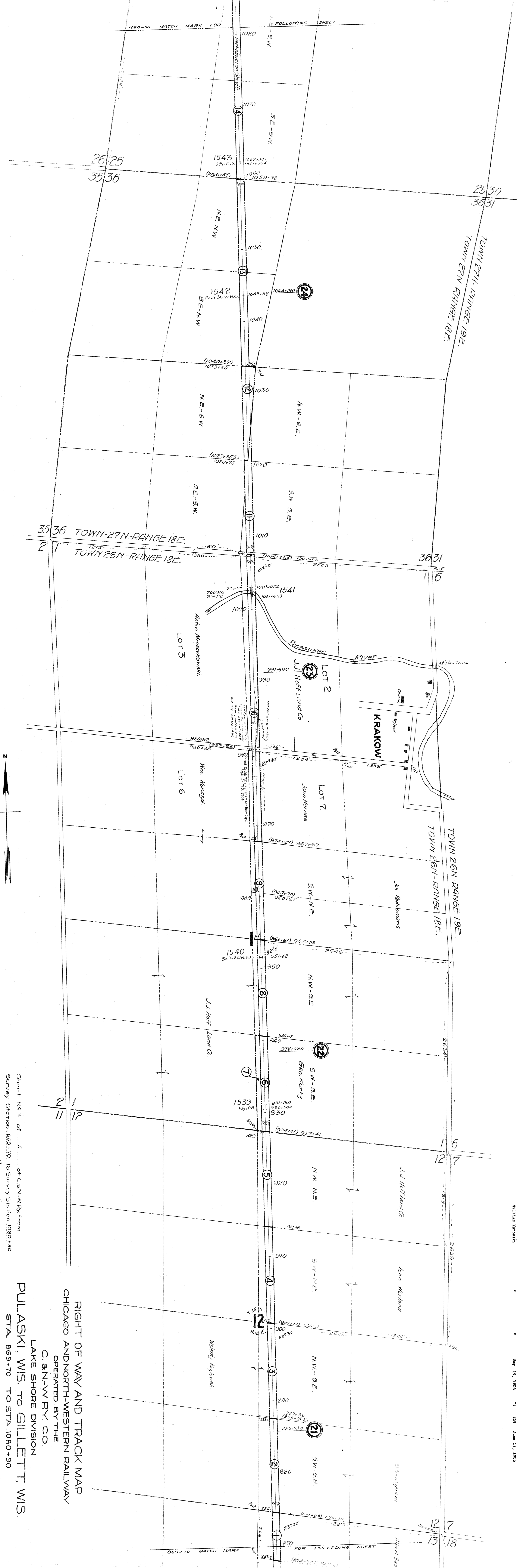
*W. H. ...*  
Chief Engineer

Subscribed and sworn to before me this 6th day of April, 1916  
Notary Public in and for the  
County of Cook,  
State of Illinois.

My commission expires May 17, 1918

**RIGHT OF WAY AND TRACK MAP**  
**CHICAGO AND NORTH-WESTERN RAILWAY**  
OPERATED BY THE  
**C. & N. W. RY. CO.**  
LAKE SHORE DIVISION  
**PULASKI, WIS. TO GILLETT, WIS.**  
STA. 677+93.9 TO STA. 869+70  
SCALE 1 IN. = 400 FT.  
JUNE 30, 1917  
OFFICE OF CHIEF ENGINEER,  
CHICAGO, ILL.

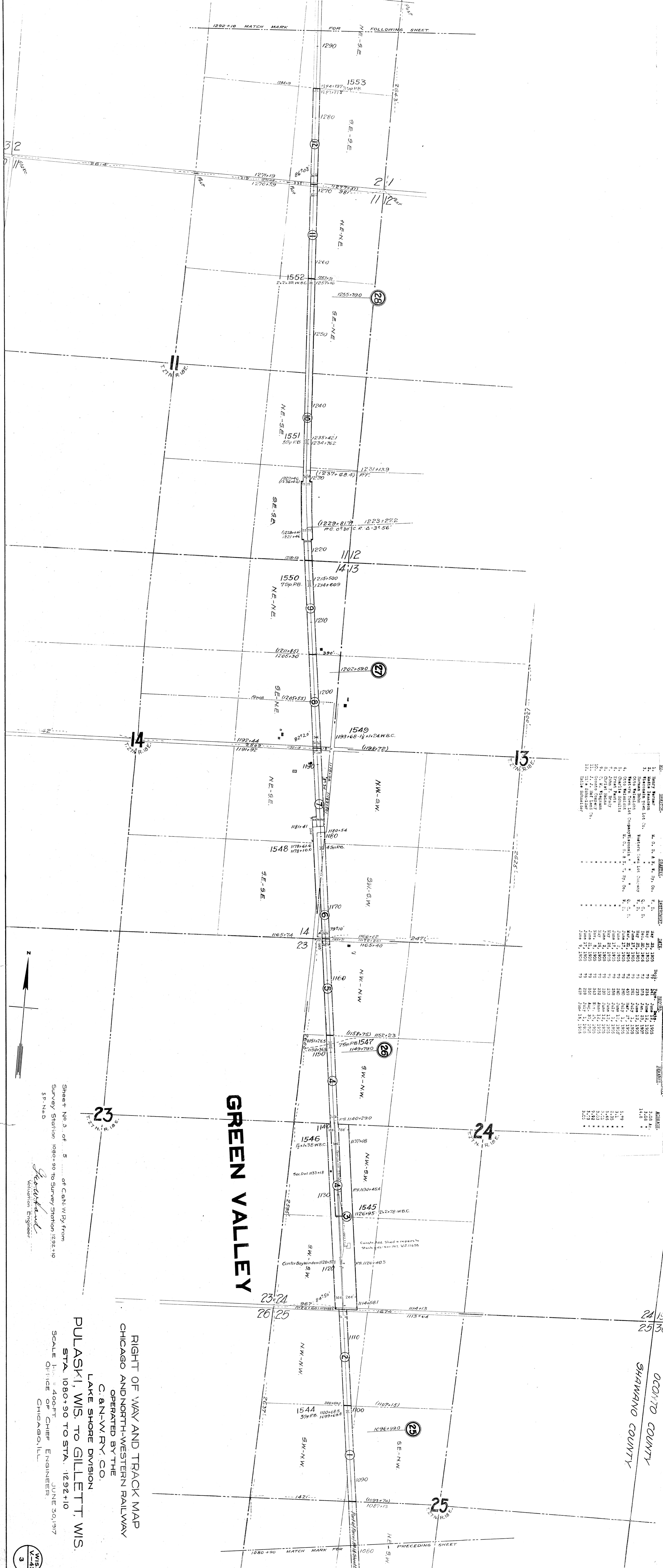




NO.	GRANTOR	DATE	RECORD	NO.	GRANTOR	DATE	RECORD
1.	John Hoff	1895	100	11.	John Hoff	1905	100
2.	John Hoff	1895	100	12.	John Hoff	1905	100
3.	John Hoff	1895	100	13.	John Hoff	1905	100
4.	John Hoff	1895	100	14.	John Hoff	1905	100
5.	John Hoff	1895	100	15.	John Hoff	1905	100
6.	John Hoff	1895	100	16.	John Hoff	1905	100
7.	John Hoff	1895	100	17.	John Hoff	1905	100
8.	John Hoff	1895	100	18.	John Hoff	1905	100
9.	John Hoff	1895	100	19.	John Hoff	1905	100
10.	John Hoff	1895	100	20.	John Hoff	1905	100

RIGHT OF WAY AND TRACK MAP  
 CHICAGO AND NORTH-WESTERN RAILWAY  
 OPERATED BY THE  
 C. & N.-W. RY. CO.  
 LAKE SHORE DIVISION  
 PULASKI, WIS. TO GILLETTS, WIS.  
 STA. 869+70 TO STA. 1080+90  
 SCALE 1 IN. = 400 FT.  
 OFFICE OF CHIEF ENGINEER, JUNE 30, 1917  
 CHICAGO, ILL.

Sheet No 2 of 5 of C.&N.W.Ry. from  
 Survey Station 869+70 to Survey Station 1080+90  
 SP. No. S  
*Paul W. Hoff*  
 Validation Engineer  
 CHICAGO, ILL.

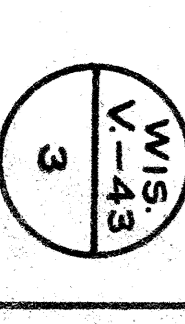


NO.	NAME	DATE	REMARKS
1	Henry Berner	May 23, 1905	
2	Edna Berner	May 23, 1905	
3	Edna Berner	May 23, 1905	
4	Edna Berner	May 23, 1905	
5	Edna Berner	May 23, 1905	
6	Edna Berner	May 23, 1905	
7	Edna Berner	May 23, 1905	
8	Edna Berner	May 23, 1905	
9	Edna Berner	May 23, 1905	
10	Edna Berner	May 23, 1905	
11	Edna Berner	May 23, 1905	
12	Edna Berner	May 23, 1905	
13	Edna Berner	May 23, 1905	
14	Edna Berner	May 23, 1905	
15	Edna Berner	May 23, 1905	
16	Edna Berner	May 23, 1905	
17	Edna Berner	May 23, 1905	
18	Edna Berner	May 23, 1905	
19	Edna Berner	May 23, 1905	
20	Edna Berner	May 23, 1905	
21	Edna Berner	May 23, 1905	
22	Edna Berner	May 23, 1905	
23	Edna Berner	May 23, 1905	
24	Edna Berner	May 23, 1905	
25	Edna Berner	May 23, 1905	
26	Edna Berner	May 23, 1905	
27	Edna Berner	May 23, 1905	
28	Edna Berner	May 23, 1905	
29	Edna Berner	May 23, 1905	
30	Edna Berner	May 23, 1905	
31	Edna Berner	May 23, 1905	
32	Edna Berner	May 23, 1905	
33	Edna Berner	May 23, 1905	
34	Edna Berner	May 23, 1905	
35	Edna Berner	May 23, 1905	
36	Edna Berner	May 23, 1905	
37	Edna Berner	May 23, 1905	
38	Edna Berner	May 23, 1905	
39	Edna Berner	May 23, 1905	
40	Edna Berner	May 23, 1905	
41	Edna Berner	May 23, 1905	
42	Edna Berner	May 23, 1905	
43	Edna Berner	May 23, 1905	
44	Edna Berner	May 23, 1905	
45	Edna Berner	May 23, 1905	
46	Edna Berner	May 23, 1905	
47	Edna Berner	May 23, 1905	
48	Edna Berner	May 23, 1905	
49	Edna Berner	May 23, 1905	
50	Edna Berner	May 23, 1905	
51	Edna Berner	May 23, 1905	
52	Edna Berner	May 23, 1905	
53	Edna Berner	May 23, 1905	
54	Edna Berner	May 23, 1905	
55	Edna Berner	May 23, 1905	
56	Edna Berner	May 23, 1905	
57	Edna Berner	May 23, 1905	
58	Edna Berner	May 23, 1905	
59	Edna Berner	May 23, 1905	
60	Edna Berner	May 23, 1905	
61	Edna Berner	May 23, 1905	
62	Edna Berner	May 23, 1905	
63	Edna Berner	May 23, 1905	
64	Edna Berner	May 23, 1905	
65	Edna Berner	May 23, 1905	
66	Edna Berner	May 23, 1905	
67	Edna Berner	May 23, 1905	
68	Edna Berner	May 23, 1905	
69	Edna Berner	May 23, 1905	
70	Edna Berner	May 23, 1905	
71	Edna Berner	May 23, 1905	
72	Edna Berner	May 23, 1905	
73	Edna Berner	May 23, 1905	
74	Edna Berner	May 23, 1905	
75	Edna Berner	May 23, 1905	
76	Edna Berner	May 23, 1905	
77	Edna Berner	May 23, 1905	
78	Edna Berner	May 23, 1905	
79	Edna Berner	May 23, 1905	
80	Edna Berner	May 23, 1905	
81	Edna Berner	May 23, 1905	
82	Edna Berner	May 23, 1905	
83	Edna Berner	May 23, 1905	
84	Edna Berner	May 23, 1905	
85	Edna Berner	May 23, 1905	
86	Edna Berner	May 23, 1905	
87	Edna Berner	May 23, 1905	
88	Edna Berner	May 23, 1905	
89	Edna Berner	May 23, 1905	
90	Edna Berner	May 23, 1905	
91	Edna Berner	May 23, 1905	
92	Edna Berner	May 23, 1905	
93	Edna Berner	May 23, 1905	
94	Edna Berner	May 23, 1905	
95	Edna Berner	May 23, 1905	
96	Edna Berner	May 23, 1905	
97	Edna Berner	May 23, 1905	
98	Edna Berner	May 23, 1905	
99	Edna Berner	May 23, 1905	
100	Edna Berner	May 23, 1905	

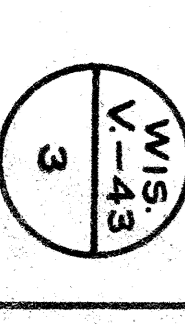
**GREEN VALLEY**

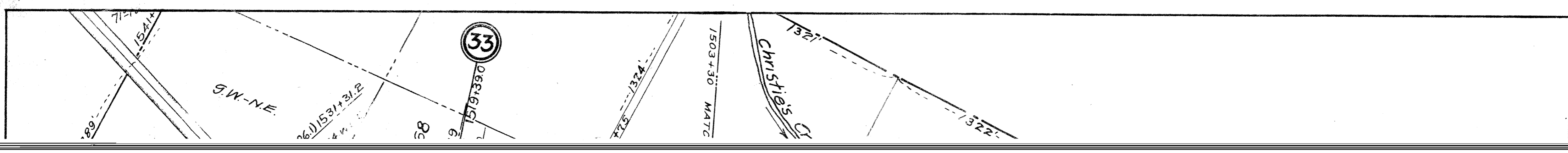
RIGHT OF WAY AND TRACK MAP  
 CHICAGO AND NORTH-WESTERN RAILWAY  
 OPERATED BY THE  
 C. & N.-W. RY. CO.  
 LAKE SHORE DIVISION  
 PULASKI, WIS. TO GILLET, WIS.  
 STA. 1080+90 TO STA. 1292+10  
 SCALE 1" = 400 FT.  
 OFFICE OF CHIEF ENGINEER  
 CHICAGO, ILL. JUNE 30, 1917

Sheet No. 3 of 5 of C. & N. W. Ry. from  
 Survey Station 1080+90 to Survey Station 1292+10  
 S.P. No. 5  
*John A. Gillett*  
 Valuation Engineer

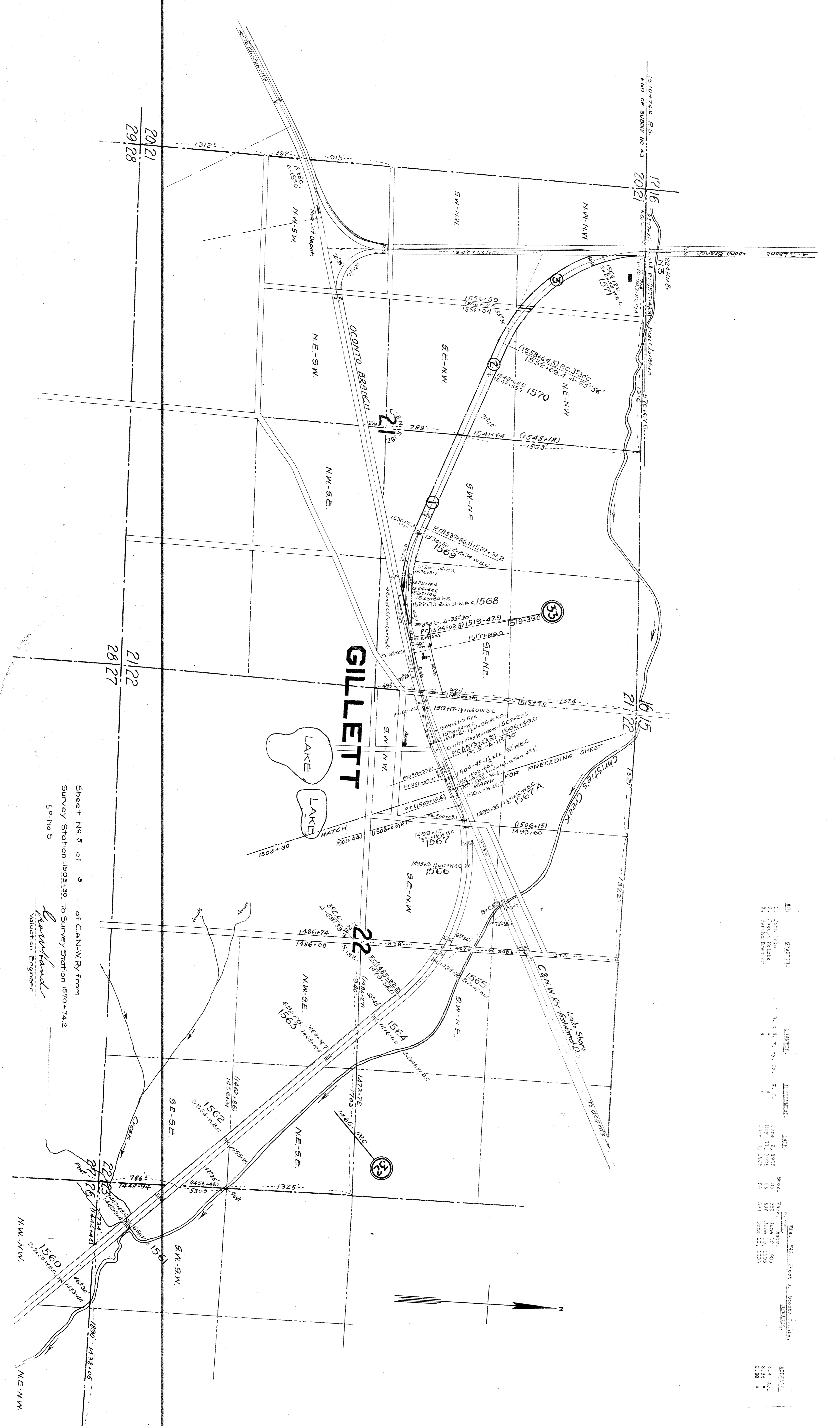


OCWA TO COUNTY  
 SHAWANO COUNTY





NO.	NAME	DATE	REVISION
1	JOHN C. RYAN	Jan 2, 1905	56
2	JOHN C. RYAN	Mar 12, 1905	57
3	EDWIN B. BROWN	May 21, 1905	58
4	JOHN C. RYAN	June 10, 1905	59
5	JOHN C. RYAN	June 10, 1905	60
6	JOHN C. RYAN	June 10, 1905	61
7	JOHN C. RYAN	June 10, 1905	62
8	JOHN C. RYAN	June 10, 1905	63
9	JOHN C. RYAN	June 10, 1905	64
10	JOHN C. RYAN	June 10, 1905	65



RIGHT OF WAY AND TRACK MAP  
 CHICAGO AND NORTH-WESTERN RAILWAY  
 OPERATED BY THE  
 C. & N.-W. RY. CO.  
 LAKE SHORE DIVISION  
 PULASKI, WIS. TO GILLETT, WIS.  
 STA. 1503+30 TO STA. 1570+74.2  
 SCALE 1" = 400 FT.  
 OFFICE OF CHIEF ENGINEER, JUNE 30, 1917  
 CHICAGO, ILL.

Sheet No. 5 of 5 of C. & N.-W. Ry. from  
 Survey Station 1503+30 to Survey Station 1570+74.2  
 S.P. No. 5  
*W. W. Hayward*  
 Valuation Engineer

