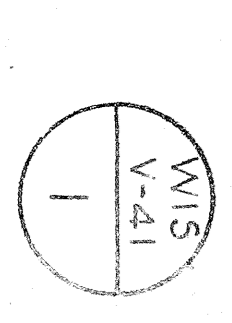


NO.	OWNER	ACRES	DATE	RECORD	REMARKS
1	Harriet F. Hale	1.28	Nov. 10, 1874	128	
2	Ed. Rosewater	1.28	Nov. 10, 1874	128	
3	Ed. Rosewater	1.11	Nov. 10, 1874	128	
4	Ed. Rosewater	1.11	Nov. 10, 1874	128	
5	Ed. Rosewater	1.11	Nov. 10, 1874	128	
6	John D. Markham	2.02	June 19, 1874	29	Isaac H. Knox, trustee of certain operators of C. & N. W. Ry. Co.
7	Kilian P. Sharp	1.73	Feb. 2, 1876	82	
8	Ed. Rosewater	1.37	Mar. 14, 1876	95	
9	Ed. Rosewater	3.27	Feb. 2, 1876	98	
10	Laura A. W. Jones	1.72	Oct. 5, 1874	29	
11	Laura A. W. Jones	6.34	July 22, 1874	29	
12	Adam B. Richardson	6.34	July 22, 1874	29	
13	Ed. Rosewater	3.11	July 2, 1874	29	
14	Ed. Rosewater	3.11	July 2, 1874	29	
15	Johnnie Holts	2.67	June 20, 1874	29	
16	Ed. Rosewater	3.27	Mar. 14, 1876	95	
17	Ed. Rosewater	3.27	Mar. 14, 1876	95	
18	Ed. Rosewater	3.27	Mar. 14, 1876	95	
19	Ed. Rosewater	3.27	Mar. 14, 1876	95	

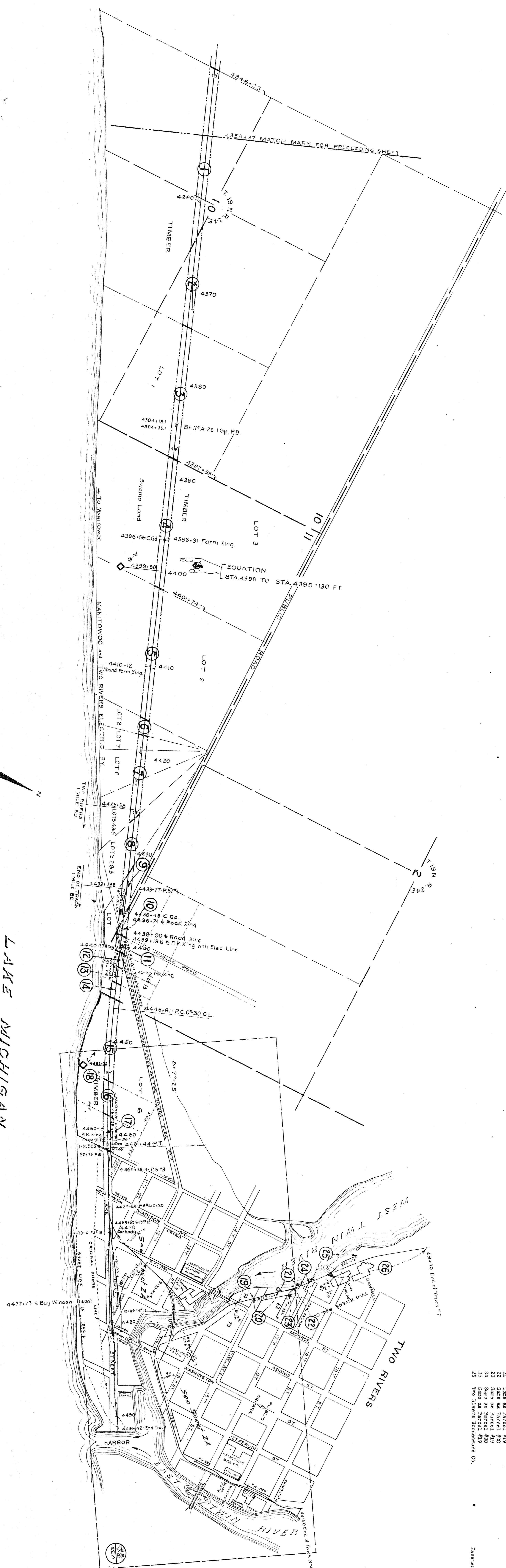
State of Illinois  
 County of Cook  
 I, the undersigned, officer of the Chicago and North Western Railway do hereby certify that this is a correct map in a series of 2 primary sheets and 1 supplemental sheet of said railway from survey station 4142 to 4370, to survey station 4491, Lake Shore Division, State of Wisconsin, prepared from the records of said company.  
 Correct  
 Valuation Engineer

Subscribed and sworn to before me, this 26 day of February, 1916.  
 Notary Public for the State of Illinois  
 My commission expires May 1, 1918.

RIGHT OF WAY AND TRACK MAP  
 CHICAGO AND NORTH-WESTERN RAILWAY  
 OPERATED BY THE  
 C. & N. W. RY. CO.  
 LAKE SHORE DIVISION  
 TWO RIVERS JCT. WIS. TO TWO RIVERS, WIS.  
 STA. 4142 + 174 TO STA. 4353 + 37  
 SCALE 1-IN = 400 FT.  
 OFFICE OF CHIEF ENGINEER  
 CHICAGO, ILL.  
 JUNE 30, 1917.



LAKE MICHIGAN

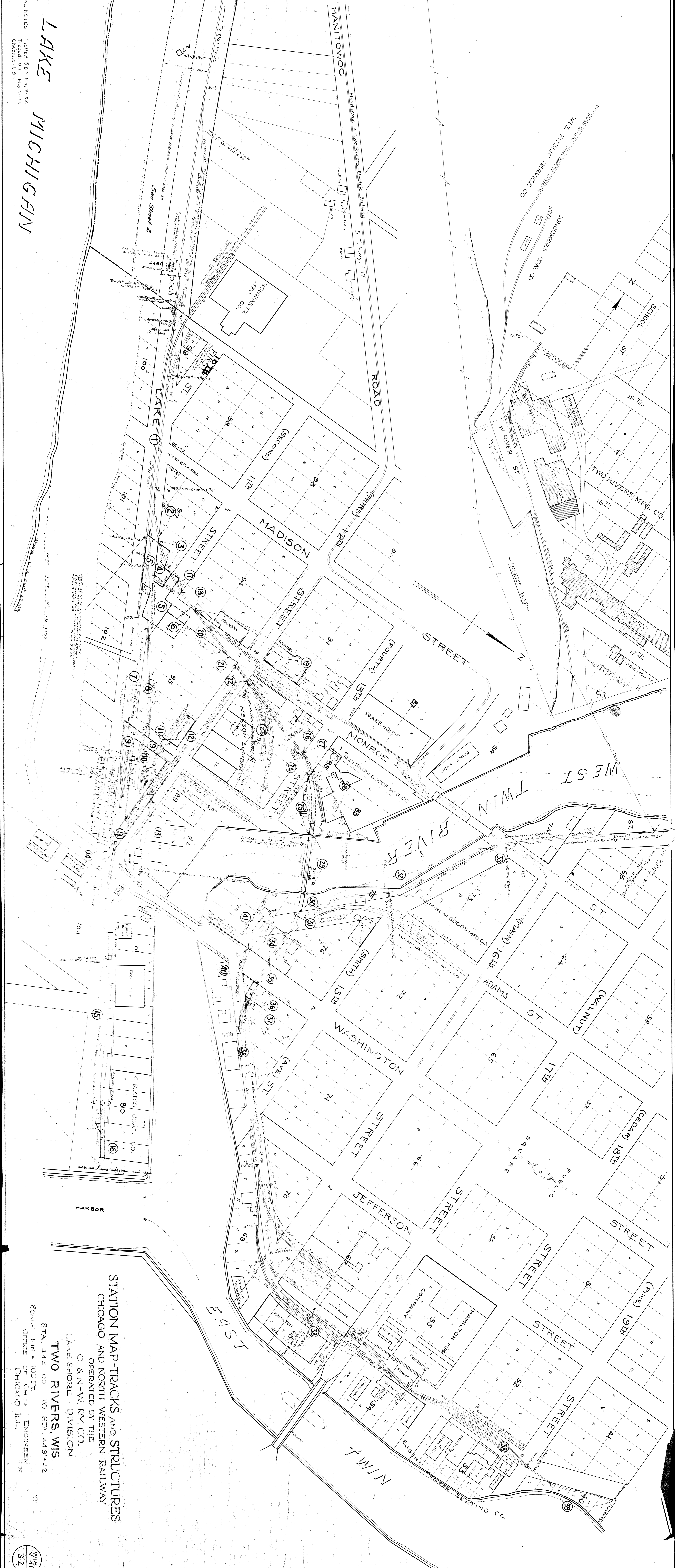


NO.	OWNER	ACQUIRE	INTEREST	DATE	BOOK	PAGE	RECORD	DATE	ACRES	S. P. M.
1	Calvin C. Barnes	Trustee	F. I.	July 23, 1874	29	88	597-25, 1880	1880	2.17	420
2	Fear Scott	Trustee	F. I.	"	"	"	"	"	3.15	420
3	Walter H. Koss	Trustee	F. I.	June 22, 1878	29	108	597-25, 1880	1880	3.15	420
4	Walter H. Koss	Trustee	F. I.	Mar. 24, 1878	29	108	597-25, 1880	1880	3.17	420
5	Walter H. Koss	Trustee	F. I.	Mar. 24, 1878	29	108	597-25, 1880	1880	3.17	420
6	Walter H. Koss	Trustee	F. I.	Mar. 24, 1878	29	108	597-25, 1880	1880	3.17	420
7	Walter H. Koss	Trustee	F. I.	Mar. 24, 1878	29	108	597-25, 1880	1880	3.17	420
8	Walter H. Koss	Trustee	F. I.	Mar. 24, 1878	29	108	597-25, 1880	1880	3.17	420
9	Walter H. Koss	Trustee	F. I.	Mar. 24, 1878	29	108	597-25, 1880	1880	3.17	420
10	Walter H. Koss	Trustee	F. I.	Mar. 24, 1878	29	108	597-25, 1880	1880	3.17	420
11	Walter H. Koss	Trustee	F. I.	Mar. 24, 1878	29	108	597-25, 1880	1880	3.17	420
12	Walter H. Koss	Trustee	F. I.	Mar. 24, 1878	29	108	597-25, 1880	1880	3.17	420
13	Walter H. Koss	Trustee	F. I.	Mar. 24, 1878	29	108	597-25, 1880	1880	3.17	420
14	Walter H. Koss	Trustee	F. I.	Mar. 24, 1878	29	108	597-25, 1880	1880	3.17	420
15	Walter H. Koss	Trustee	F. I.	Mar. 24, 1878	29	108	597-25, 1880	1880	3.17	420
16	Walter H. Koss	Trustee	F. I.	Mar. 24, 1878	29	108	597-25, 1880	1880	3.17	420
17	Walter H. Koss	Trustee	F. I.	Mar. 24, 1878	29	108	597-25, 1880	1880	3.17	420
18	Walter H. Koss	Trustee	F. I.	Mar. 24, 1878	29	108	597-25, 1880	1880	3.17	420
19	Walter H. Koss	Trustee	F. I.	Mar. 24, 1878	29	108	597-25, 1880	1880	3.17	420
20	Walter H. Koss	Trustee	F. I.	Mar. 24, 1878	29	108	597-25, 1880	1880	3.17	420
21	Walter H. Koss	Trustee	F. I.	Mar. 24, 1878	29	108	597-25, 1880	1880	3.17	420
22	Walter H. Koss	Trustee	F. I.	Mar. 24, 1878	29	108	597-25, 1880	1880	3.17	420
23	Walter H. Koss	Trustee	F. I.	Mar. 24, 1878	29	108	597-25, 1880	1880	3.17	420
24	Walter H. Koss	Trustee	F. I.	Mar. 24, 1878	29	108	597-25, 1880	1880	3.17	420
25	Walter H. Koss	Trustee	F. I.	Mar. 24, 1878	29	108	597-25, 1880	1880	3.17	420
26	Walter H. Koss	Trustee	F. I.	Mar. 24, 1878	29	108	597-25, 1880	1880	3.17	420

RIGHT OF WAY AND TRACK MAP  
CHICAGO AND NORTH-WESTERN RAILWAY  
OPERATED BY THE  
C. & N.-W. RY. CO.  
LAKE SHORE DIVISION  
TWO RIVERS JCT. WIS. TO TWO RIVERS, WIS.  
STA. 4353 + 37 TO STA. 4491 + 42  
SCALE 1-IN = 400 FT.  
OFFICE OF CHIEF ENGINEER  
CHICAGO, ILL.  
JUNE 30, 1917.

**LAKE  
MICHIGAN**

VAL NOTES - Plotted 6/24/1916  
 Traced 9/1/1916  
 Checked 8/11/1916



**STATION MAP-TRACKS AND STRUCTURES  
 CHICAGO AND NORTH-WESTERN RAILWAY**

OPERATED BY THE  
**C. & N. W. RY. CO.**  
 LAKE SHORE DIVISION

**TWO RIVERS, WIS.**

SCALE 1" = 100 FT.  
 STA. 4451+00 TO STA. 4491+42  
 OFFICE OF CHIEF ENGINEER  
 CHICAGO, ILL.

