

OUTAGAMIE

COUNTY

WINNEBAGO
COUNTY

LAKE
WINNEBAGO

BROWN
COUNTY

CALUMET
COUNTY

COUNTY

MANITOWOC
COUNTY

COUNTY

INDEX MAP
CHICAGO AND NORTH-WESTERN RAILWAY
OPERATED BY THE
C. & N.W. RY. CO.
LAKE SHORE DIVISION
MANITOWOC, WIS. TO KAUKAUNA, WIS.
STA. 3951+33 TO STA. 5920+893
SCALE: 1/16 MILE.
OFFICE OF CHIEF ENGINEER,
CHICAGO, ILL.

R. 17 E.

R. 18 E.

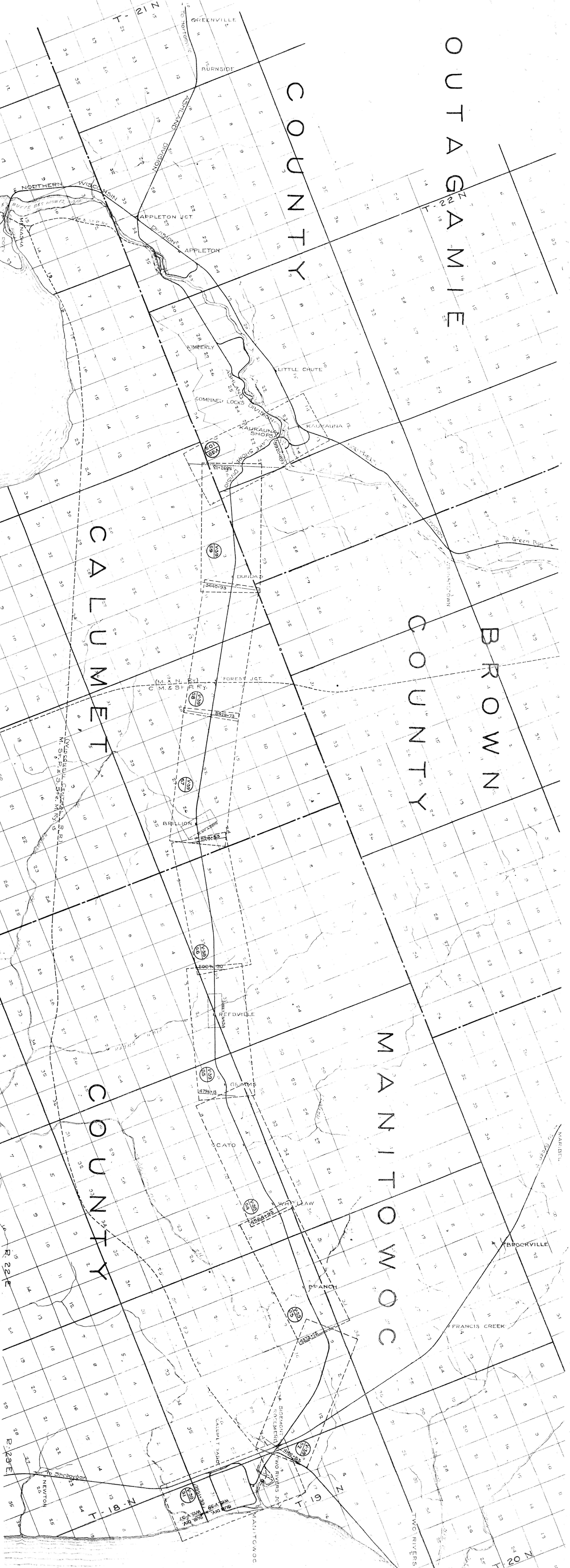
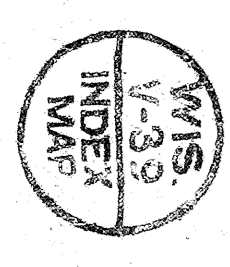
R. 19 E.

R. 20 E.

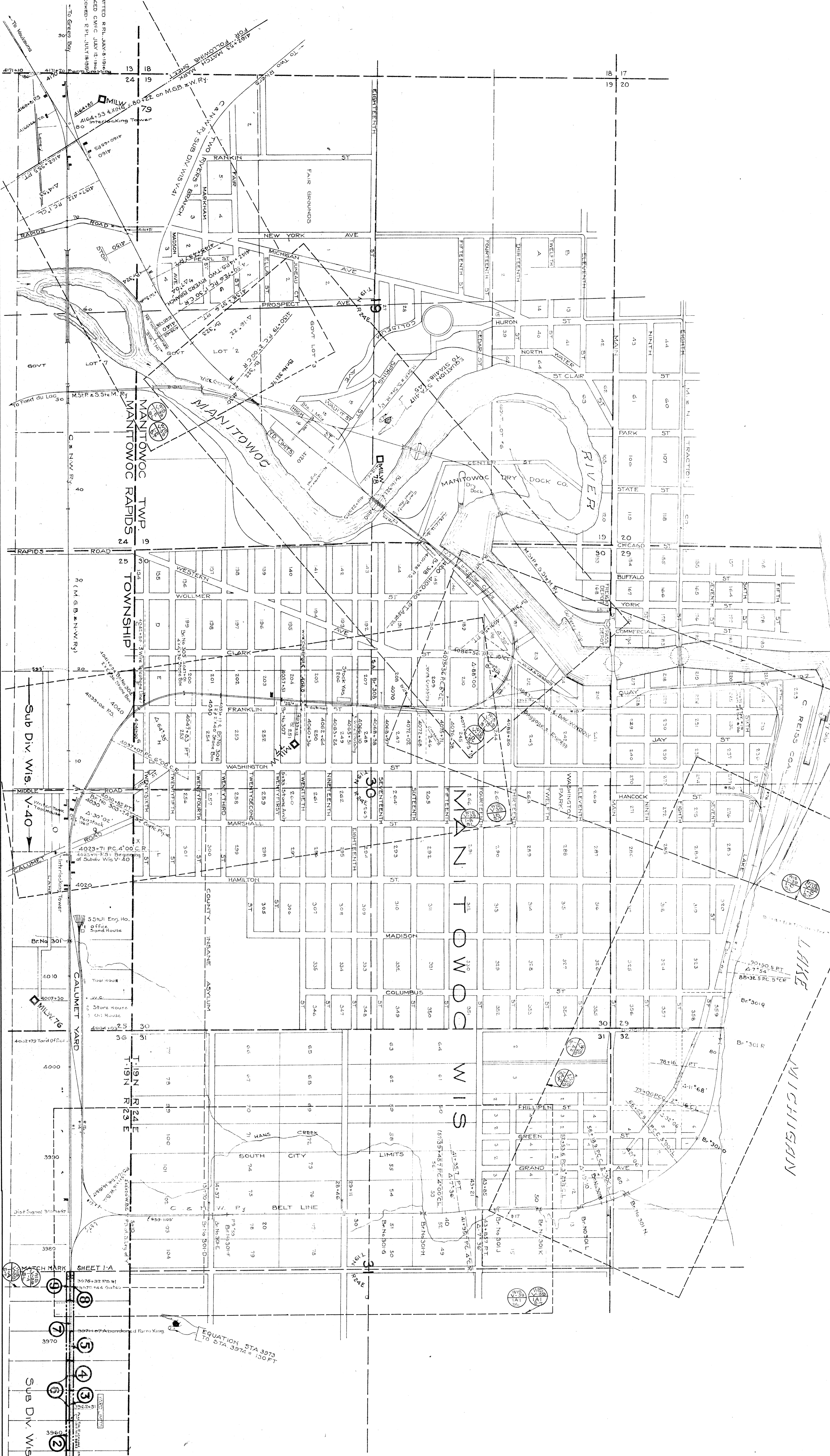
R. 21 E.

R. 22 E.

R. 23 E.

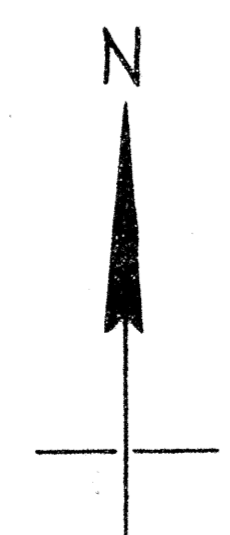


L A K E M I C H I G A N



NO.	NAME	DATE	RECORD	INDEX
1	Volunteer	July 27, 1874	10	1070
2	Volunteer	July 27, 1874	11	1070
3	Volunteer	July 27, 1874	12	1070
4	Volunteer	July 27, 1874	13	1070
5	Volunteer	July 27, 1874	14	1070
6	Volunteer	July 27, 1874	15	1070
7	Volunteer	July 27, 1874	16	1070
8	Volunteer	July 27, 1874	17	1070
9	Volunteer	July 27, 1874	18	1070
10	Volunteer	July 27, 1874	19	1070
11	Volunteer	July 27, 1874	20	1070
12	Volunteer	July 27, 1874	21	1070
13	Volunteer	July 27, 1874	22	1070
14	Volunteer	July 27, 1874	23	1070
15	Volunteer	July 27, 1874	24	1070
16	Volunteer	July 27, 1874	25	1070
17	Volunteer	July 27, 1874	26	1070
18	Volunteer	July 27, 1874	27	1070
19	Volunteer	July 27, 1874	28	1070
20	Volunteer	July 27, 1874	29	1070
21	Volunteer	July 27, 1874	30	1070
22	Volunteer	July 27, 1874	31	1070
23	Volunteer	July 27, 1874	32	1070
24	Volunteer	July 27, 1874	33	1070
25	Volunteer	July 27, 1874	34	1070
26	Volunteer	July 27, 1874	35	1070
27	Volunteer	July 27, 1874	36	1070
28	Volunteer	July 27, 1874	37	1070
29	Volunteer	July 27, 1874	38	1070
30	Volunteer	July 27, 1874	39	1070
31	Volunteer	July 27, 1874	40	1070
32	Volunteer	July 27, 1874	41	1070
33	Volunteer	July 27, 1874	42	1070
34	Volunteer	July 27, 1874	43	1070
35	Volunteer	July 27, 1874	44	1070
36	Volunteer	July 27, 1874	45	1070
37	Volunteer	July 27, 1874	46	1070
38	Volunteer	July 27, 1874	47	1070
39	Volunteer	July 27, 1874	48	1070
40	Volunteer	July 27, 1874	49	1070
41	Volunteer	July 27, 1874	50	1070
42	Volunteer	July 27, 1874	51	1070
43	Volunteer	July 27, 1874	52	1070
44	Volunteer	July 27, 1874	53	1070
45	Volunteer	July 27, 1874	54	1070
46	Volunteer	July 27, 1874	55	1070
47	Volunteer	July 27, 1874	56	1070
48	Volunteer	July 27, 1874	57	1070
49	Volunteer	July 27, 1874	58	1070
50	Volunteer	July 27, 1874	59	1070
51	Volunteer	July 27, 1874	60	1070
52	Volunteer	July 27, 1874	61	1070
53	Volunteer	July 27, 1874	62	1070
54	Volunteer	July 27, 1874	63	1070
55	Volunteer	July 27, 1874	64	1070
56	Volunteer	July 27, 1874	65	1070
57	Volunteer	July 27, 1874	66	1070
58	Volunteer	July 27, 1874	67	1070
59	Volunteer	July 27, 1874	68	1070
60	Volunteer	July 27, 1874	69	1070
61	Volunteer	July 27, 1874	70	1070
62	Volunteer	July 27, 1874	71	1070
63	Volunteer	July 27, 1874	72	1070
64	Volunteer	July 27, 1874	73	1070
65	Volunteer	July 27, 1874	74	1070
66	Volunteer	July 27, 1874	75	1070
67	Volunteer	July 27, 1874	76	1070
68	Volunteer	July 27, 1874	77	1070
69	Volunteer	July 27, 1874	78	1070
70	Volunteer	July 27, 1874	79	1070
71	Volunteer	July 27, 1874	80	1070
72	Volunteer	July 27, 1874	81	1070
73	Volunteer	July 27, 1874	82	1070
74	Volunteer	July 27, 1874	83	1070
75	Volunteer	July 27, 1874	84	1070
76	Volunteer	July 27, 1874	85	1070
77	Volunteer	July 27, 1874	86	1070
78	Volunteer	July 27, 1874	87	1070
79	Volunteer	July 27, 1874	88	1070
80	Volunteer	July 27, 1874	89	1070
81	Volunteer	July 27, 1874	90	1070
82	Volunteer	July 27, 1874	91	1070
83	Volunteer	July 27, 1874	92	1070
84	Volunteer	July 27, 1874	93	1070
85	Volunteer	July 27, 1874	94	1070
86	Volunteer	July 27, 1874	95	1070
87	Volunteer	July 27, 1874	96	1070
88	Volunteer	July 27, 1874	97	1070
89	Volunteer	July 27, 1874	98	1070
90	Volunteer	July 27, 1874	99	1070
91	Volunteer	July 27, 1874	100	1070

RIGHT OF WAY AND TRACK MAP
CHICAGO AND NORTH-WESTERN RAILWAY
 OPERATED BY THE
C. & N.W. RY. CO.
LAKE SHORE DIVISION
MANITOWOC, WIS. TO KAUKAUNA, WIS.
 STA. 3951 + 33 TO STA. 4162 + 53
 SCALE 1 IN. = 400 FT.
 OFFICE OF CHIEF ENGINEER
 JUNE 30, 1917.
 CHICAGO, ILL.

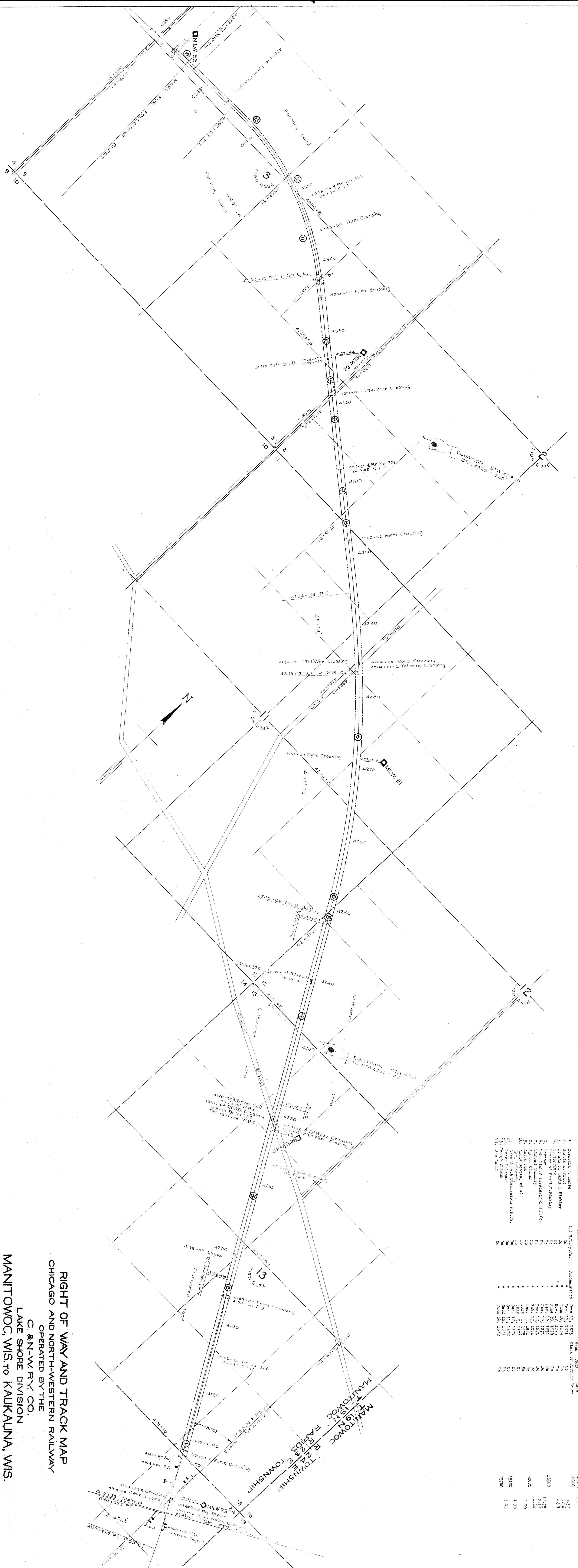


Subscribed and sworn to before me, this 28th day of February, 1917.
 Notary Public in and for the
 County of Cook
 State of Illinois

Correct Validation Engineer
Edward J. ...



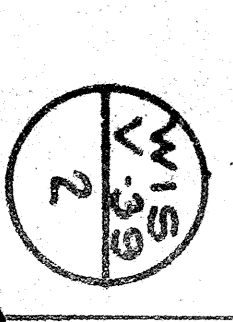
PLATTED FROM ANNUAL ENGINEERING RECORDS OF THE CHICAGO & NORTH-WESTERN RAILWAY COMPANY, CHICAGO, ILL., DATE OF 1917.



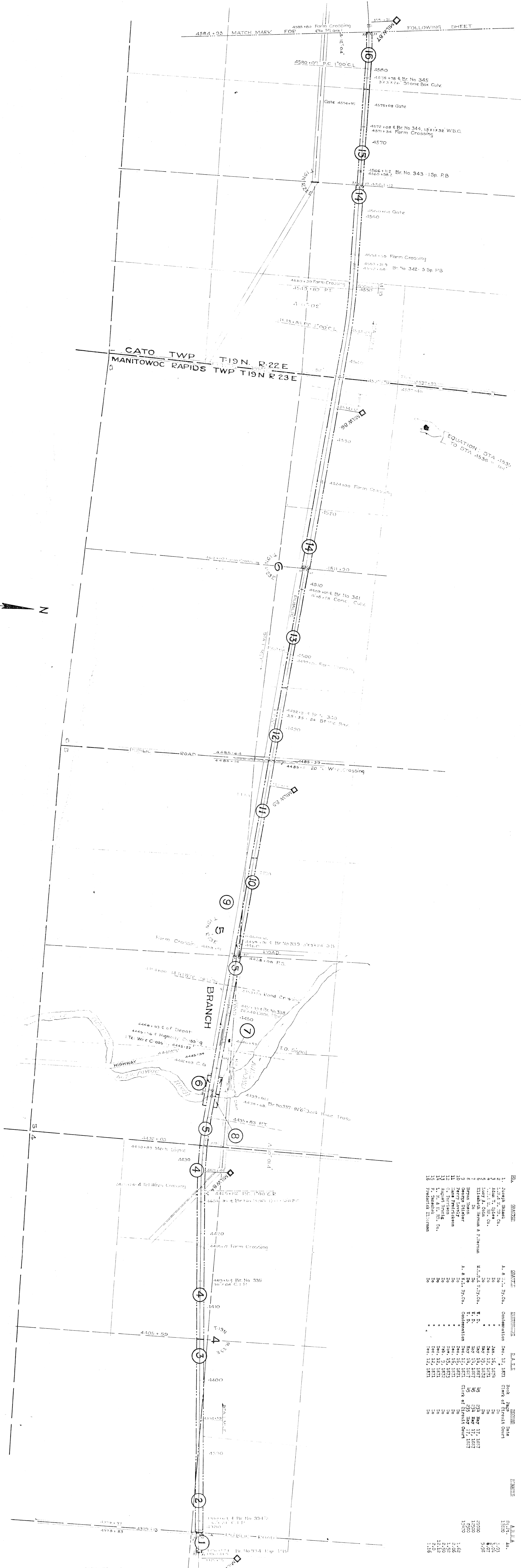
NO.	DESCRIPTION	DATE	BY	REVISION
1	Complete	June 19, 1917	J. H. ...	
2	Survey of ...	June 30, 1917	J. H. ...	
3	Survey of ...	June 30, 1917	J. H. ...	
4	Survey of ...	June 30, 1917	J. H. ...	
5	Survey of ...	June 30, 1917	J. H. ...	
6	Survey of ...	June 30, 1917	J. H. ...	
7	Survey of ...	June 30, 1917	J. H. ...	
8	Survey of ...	June 30, 1917	J. H. ...	
9	Survey of ...	June 30, 1917	J. H. ...	
10	Survey of ...	June 30, 1917	J. H. ...	
11	Survey of ...	June 30, 1917	J. H. ...	
12	Survey of ...	June 30, 1917	J. H. ...	
13	Survey of ...	June 30, 1917	J. H. ...	
14	Survey of ...	June 30, 1917	J. H. ...	
15	Survey of ...	June 30, 1917	J. H. ...	

Sheet No. 2 of 26, C. & N.W. Ry.
 from Survey Station 4162+53
 to Survey Station 4173+73.
 J. H. ...
 Validation Engineer

RIGHT OF WAY AND TRACK MAP
CHICAGO AND NORTH-WESTERN RAILWAY
 OPERATED BY THE
C. & N.W. RY. CO.
LAKE SHORE DIVISION
MANITOWOC, WIS. TO KAUKAJUNA, WIS.
 STA. 4162+53 TO STA. 4373+73
 SCALE 1 IN. = 400-FT.
 OFFICE OF CHIEF ENGINEER
 JUNE 30, 1917.
 CHICAGO, ILL.



PLANNED
 TRACKED
 CHECKED
 R.P.L. MAY 8, 1916
 C.M.C. JUNE 1, 1916
 R.P.L. JULY 17, 1916

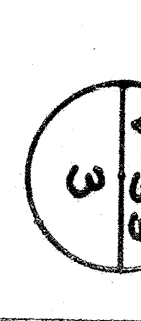


NO.	NAME	RESIDENCE	DATE	REMARKS	DATE	REMARKS
1	Joseph Siders	Do	Jan. 15, 1874	Do	Do	Do
2	L. H. Siders	Do	Do	Do	Do	Do
3	Adam W. Siders	Do	Do	Do	Do	Do
4	John W. Siders	Do	Do	Do	Do	Do
5	Louis A. Siders	Do	Do	Do	Do	Do
6	Elizabeth Herman & Fishman	Do	Do	Do	Do	Do
7	Do	Do	Do	Do	Do	Do
8	Do	Do	Do	Do	Do	Do
9	Do	Do	Do	Do	Do	Do
10	Perry Joseph	Do	Do	Do	Do	Do
11	James Frederickson	Do	Do	Do	Do	Do
12	Do	Do	Do	Do	Do	Do
13	Do	Do	Do	Do	Do	Do
14	Do	Do	Do	Do	Do	Do
15	Do	Do	Do	Do	Do	Do
16	Do	Do	Do	Do	Do	Do
17	Do	Do	Do	Do	Do	Do
18	Do	Do	Do	Do	Do	Do
19	Do	Do	Do	Do	Do	Do
20	Do	Do	Do	Do	Do	Do

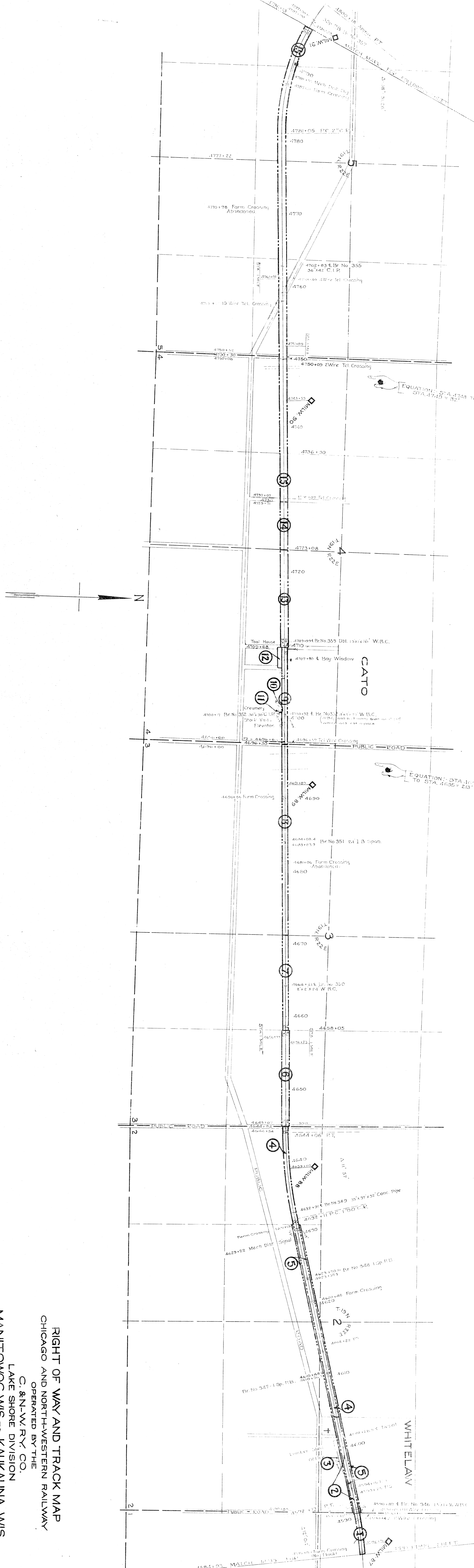
RIGHT OF WAY AND TRACK MAP
 CHICAGO AND NORTH-WESTERN RAILWAY
 OPERATED BY THE
 C. & N. W. RY. CO.
 LAKE SHORE DIVISION
 MANITOWOC, WIS. TO KAUKAJUNA, WIS.

Sheet No. 2, of 22, C. & N. W. Ry.
 from Survey Station 4373+73
 to Survey Station 4584+93.
 10-P. 16-S. Validation Engineer

SCALE 1 IN. = 400-FT.
 OFFICE OF CHIEF ENGINEER
 CHICAGO, ILL.



PLANNED R.R. MAP MAY 19 1916
 CHECKED R.R. JUN 17 1916

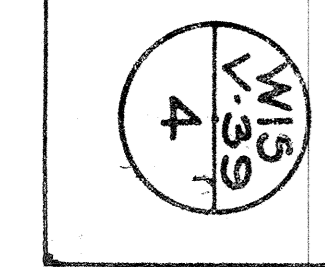


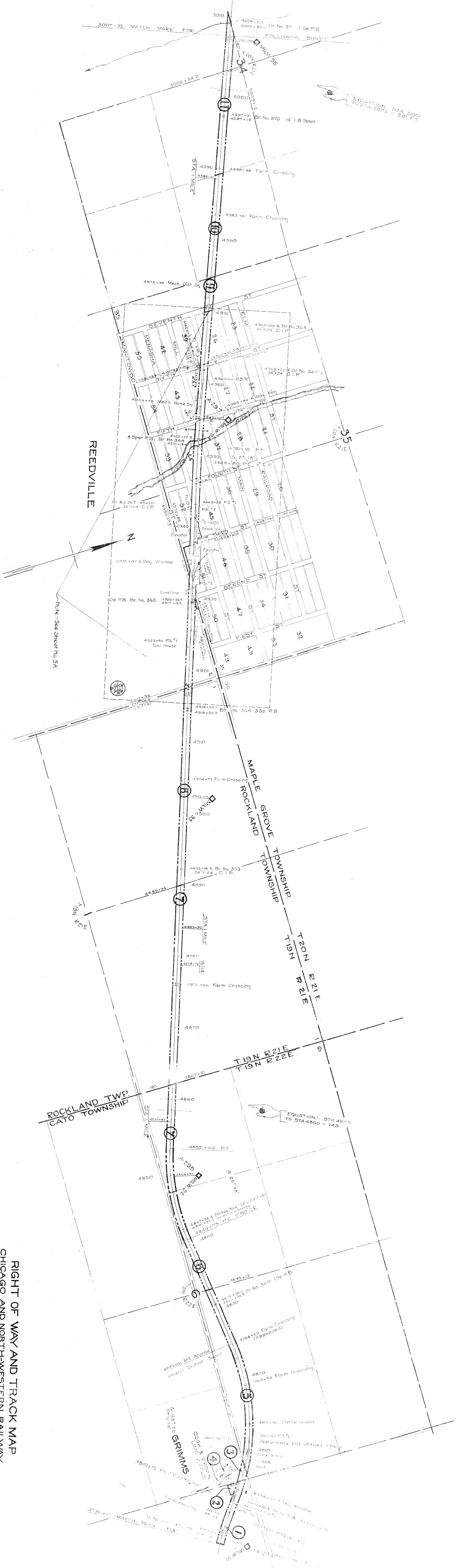
NO.	NAME	DATE	REVISION	BY	DATE	REVISION	BY
1	Prepared	1916					
2	Checked	1916					
3	Approved	1916					
4	Checked	1916					
5	Approved	1916					
6	Checked	1916					
7	Approved	1916					
8	Checked	1916					
9	Approved	1916					
10	Checked	1916					
11	Approved	1916					
12	Checked	1916					
13	Approved	1916					
14	Checked	1916					
15	Approved	1916					

RIGHT OF WAY AND TRACK MAP
 CHICAGO AND NORTH-WESTERN RAILWAY
 OPERATED BY THE
 C. & N. W. RY. CO.
 LAKE SHORE DIVISION
 MANITOWOC, WIS. TO KAUKAUNA, WIS.

Sheet No. A. of 26, C. & N. W. Ry.
 from Survey Station 4564+33
 to Survey Station 4796+13.
 10-P. 18-5. *W. J. ...*
 Validation Engineer

STA. 4584 + 93 TO STA. 4796 + 19
 SCALE 1/4" = 400-FT.
 OFFICE OF CHIEF ENGINEER
 JUNE 30, 1917.
 CHICAGO, ILL.





EQUATION: STA 5000
TO STA. 5002 = 207 FT.

EQUATION: STA 4870
TO STA 4860 = 149

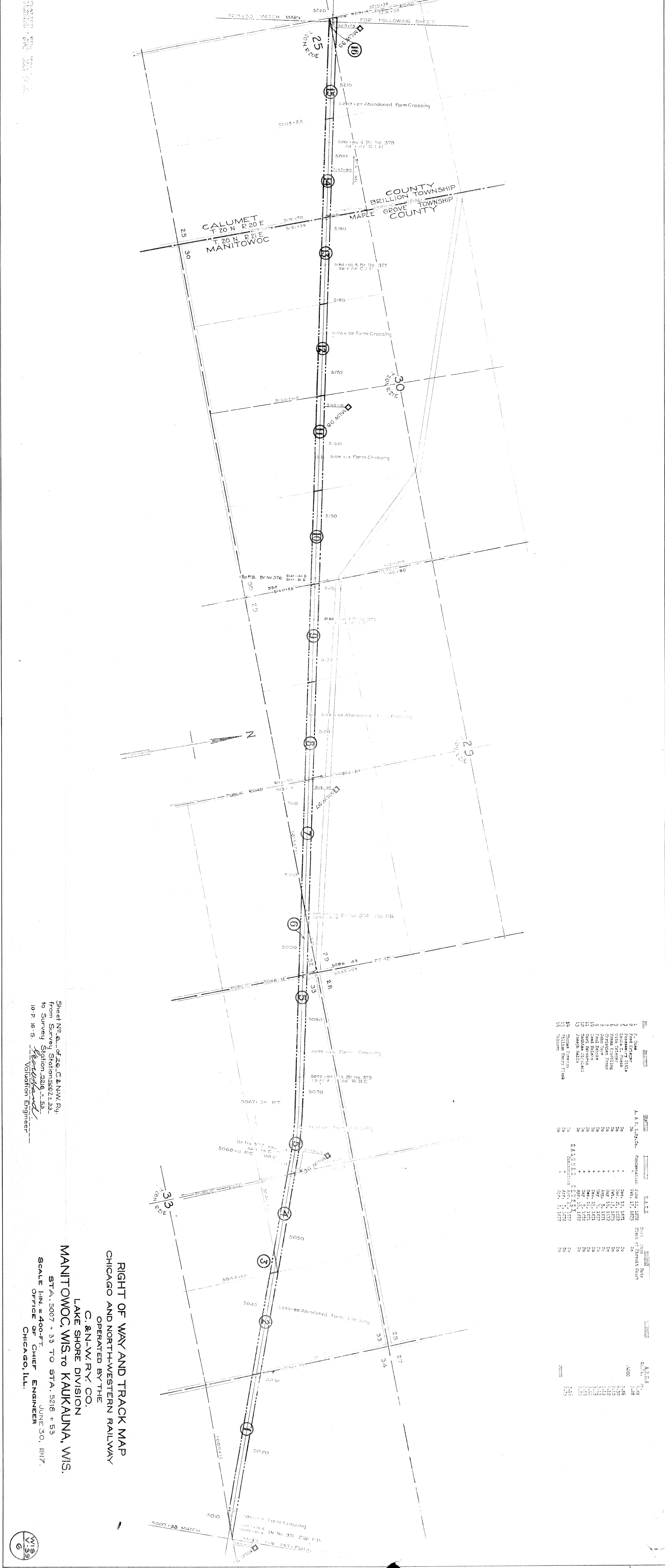
NO.	DESCRIPTION	DATE	BY
1	1. H. A. H. Co.	1871	H. A. H.
2	2. Land & Survey Co.	1872	L. & S.
3	3. Cook & Brown Land Company	1873	C. & B.
4	4. H. A. H. Co.	1874	H. A. H.
5	5. H. A. H. Co.	1875	H. A. H.
6	6. H. A. H. Co.	1876	H. A. H.
7	7. H. A. H. Co.	1877	H. A. H.
8	8. H. A. H. Co.	1878	H. A. H.
9	9. H. A. H. Co.	1879	H. A. H.
10	10. H. A. H. Co.	1880	H. A. H.
11	11. H. A. H. Co.	1881	H. A. H.

PLANNED BY: M. H. H. Co.
 DRAWN BY: M. H. H. Co.
 CHECKED BY: M. H. H. Co.

Sheet No. 5 of 26, C. & N.W. Ry.
 from Survey Station 4796+13
 to Survey Station 5007+33
 10-P-16-S
 Validation Engineer

RIGHT OF WAY AND TRACK MAP
CHICAGO AND NORTH-WESTERN RAILWAY
 OPERATED BY THE
C. & N.W. RY. CO.
 LAKE SHORE DIVISION
MANITOWOC, WIS. TO KAUKAUNA, WIS.
 STA. 4796 + 13 TO STA. 5007 + 33
 SCALE 1 IN. = 400 FT.
 OFFICE OF CHIEF ENGINEER
 JUNE 30, 1917.
 CHICAGO, ILL.





NO.	DESCRIPTION	DATE	BY	REVISION
1	As Shown	June 12, 1917	A. L. R.	
2	As Shown	June 12, 1917	A. L. R.	
3	As Shown	June 12, 1917	A. L. R.	
4	As Shown	June 12, 1917	A. L. R.	
5	As Shown	June 12, 1917	A. L. R.	
6	As Shown	June 12, 1917	A. L. R.	
7	As Shown	June 12, 1917	A. L. R.	
8	As Shown	June 12, 1917	A. L. R.	
9	As Shown	June 12, 1917	A. L. R.	
10	As Shown	June 12, 1917	A. L. R.	
11	As Shown	June 12, 1917	A. L. R.	
12	As Shown	June 12, 1917	A. L. R.	
13	As Shown	June 12, 1917	A. L. R.	
14	As Shown	June 12, 1917	A. L. R.	
15	As Shown	June 12, 1917	A. L. R.	
16	As Shown	June 12, 1917	A. L. R.	
17	As Shown	June 12, 1917	A. L. R.	
18	As Shown	June 12, 1917	A. L. R.	
19	As Shown	June 12, 1917	A. L. R.	
20	As Shown	June 12, 1917	A. L. R.	

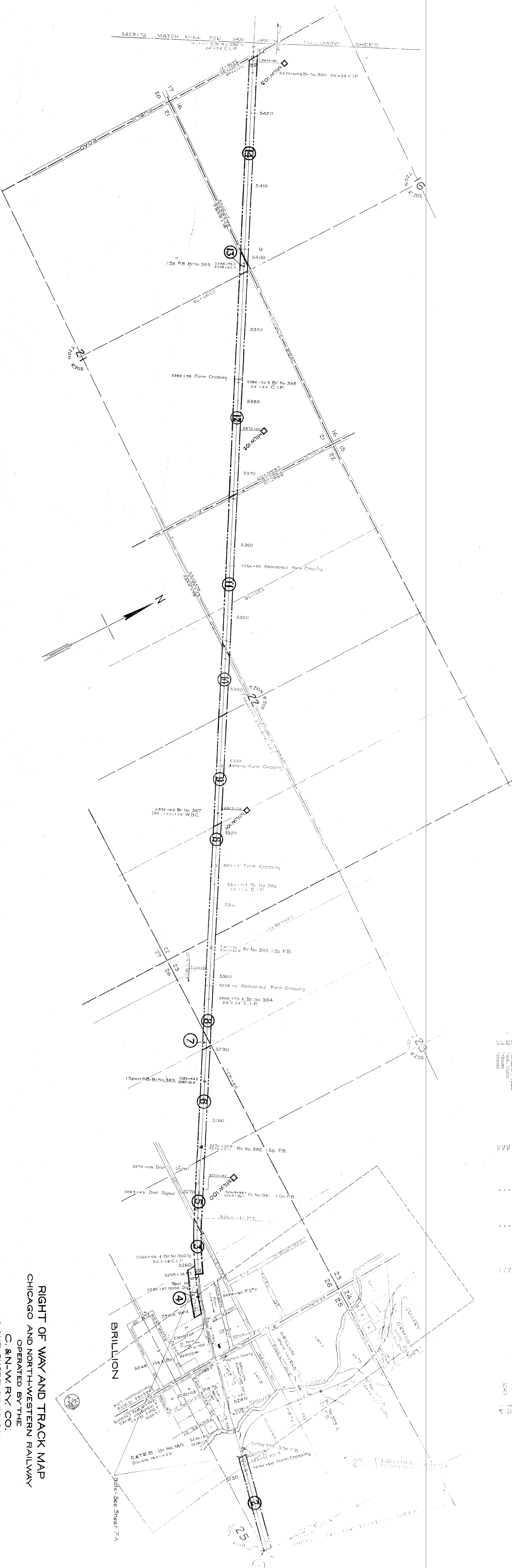
RIGHT OF WAY AND TRACK MAP
 CHICAGO AND NORTH-WESTERN RAILWAY
 OPERATED BY THE
 C. & N. W. RY. CO.
 LAKE SHORE DIVISION
 MANITOWOC, WIS. TO KAUKAUNA, WIS.

Sheet No. 6 of 26, C. & N. W. Ry.
 from Survey Station 5007+33
 to Survey Station 5218+53.
 10-P. 16-S. *W. J. H. H.*
 Validation Engineer

STA. 5007 + 33 TO STA. 5218 + 53
 SCALE 1 IN. = 400-FT.
 OFFICE OF CHIEF ENGINEER
 CHICAGO, ILL. JUNE 30, 1917.



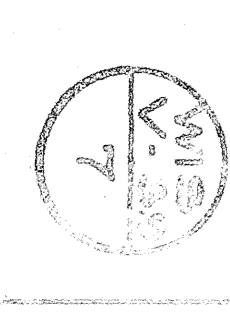
PLATTED - R. P. L. MAY 15, 1916
 TRACED - C. M. C. MAY 27, 1916
 CHECKED - R. P. L. JULY 17, 1916



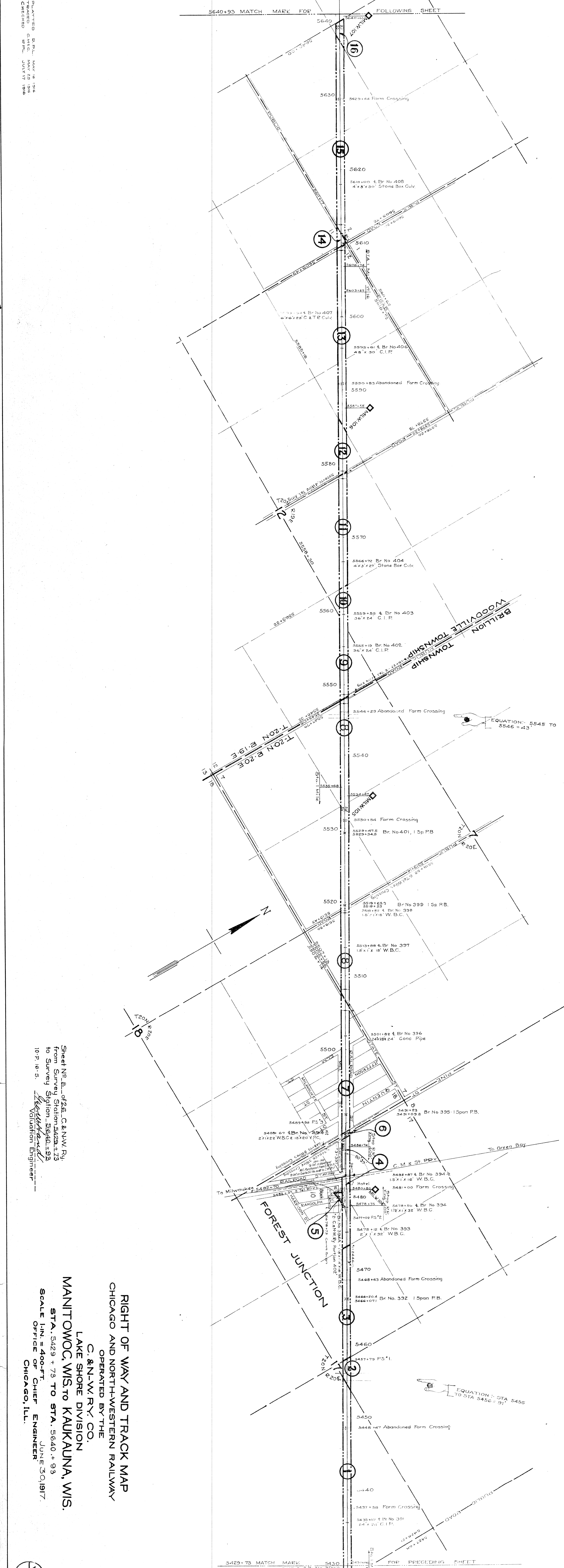
NO.	DESCRIPTION	DATE	BY	RECORD NO.
1	Original	Apr. 11, 1912	C. M. C.	200
2	Amended	Apr. 11, 1912	C. M. C.	200
3	Amended	Apr. 11, 1912	C. M. C.	200
4	Amended	Apr. 11, 1912	C. M. C.	200
5	Amended	Apr. 11, 1912	C. M. C.	200
6	Amended	Apr. 11, 1912	C. M. C.	200
7	Amended	Apr. 11, 1912	C. M. C.	200
8	Amended	Apr. 11, 1912	C. M. C.	200
9	Amended	Apr. 11, 1912	C. M. C.	200
10	Amended	Apr. 11, 1912	C. M. C.	200
11	Amended	Apr. 11, 1912	C. M. C.	200
12	Amended	Apr. 11, 1912	C. M. C.	200
13	Amended	Apr. 11, 1912	C. M. C.	200
14	Amended	Apr. 11, 1912	C. M. C.	200
15	Amended	Apr. 11, 1912	C. M. C.	200
16	Amended	Apr. 11, 1912	C. M. C.	200
17	Amended	Apr. 11, 1912	C. M. C.	200
18	Amended	Apr. 11, 1912	C. M. C.	200
19	Amended	Apr. 11, 1912	C. M. C.	200
20	Amended	Apr. 11, 1912	C. M. C.	200
21	Amended	Apr. 11, 1912	C. M. C.	200
22	Amended	Apr. 11, 1912	C. M. C.	200
23	Amended	Apr. 11, 1912	C. M. C.	200
24	Amended	Apr. 11, 1912	C. M. C.	200
25	Amended	Apr. 11, 1912	C. M. C.	200
26	Amended	Apr. 11, 1912	C. M. C.	200

RIGHT OF WAY AND TRACK MAP
CHICAGO AND NORTH-WESTERN RAILWAY
 OPERATED BY THE
C. & N. W. RY. CO.
LAKE SHORE DIVISION
MANITOWOC, WIS. TO KAUKAUNA, WIS.

SCALE 1 IN. = 400-FT.
 JUNE 30, 1917.
 OFFICE OF CHIEF ENGINEER
 CHICAGO, ILL.



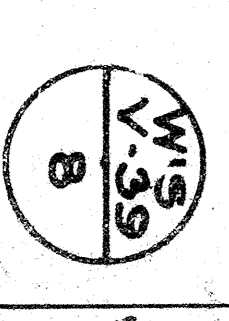
PLANNED D.P.L. MAY 16 1916
 TRACED C.P.L. JULY 17 1916
 CHICAGO ILL.



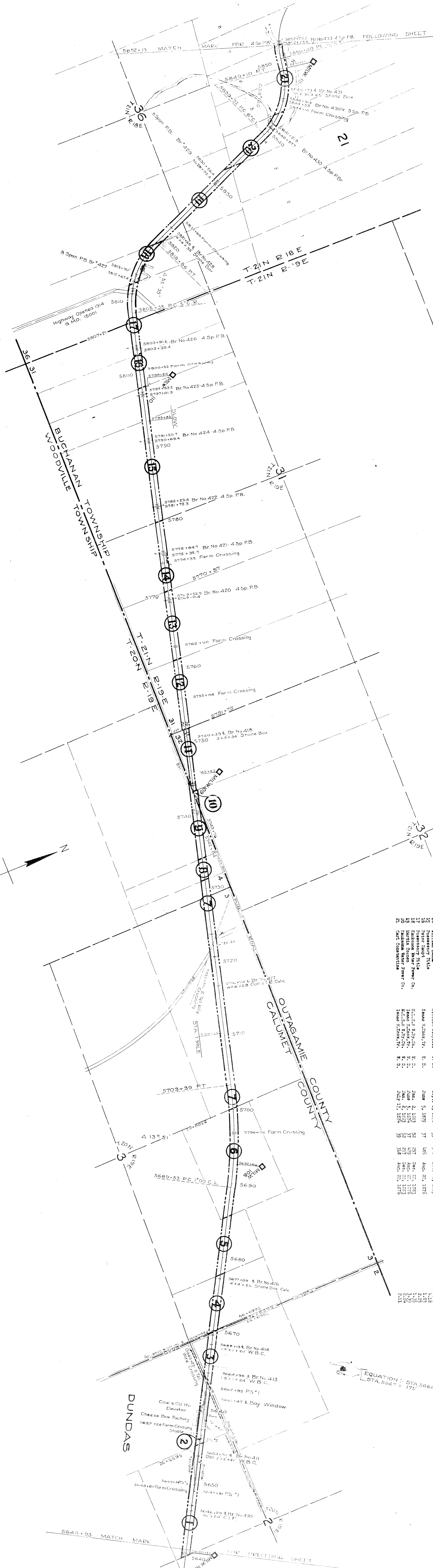
NO.	NAME	DATE	REMARKS	AMOUNT
1	M. Halloran			1.10
2	Arnold Hansen			1.48
3	Unknown			3.45
4	Unknown			1.10
5	Unknown			1.10
6	Unknown			1.10
7	Unknown			1.10
8	Unknown			1.10
9	Unknown			1.10
10	Unknown			1.10
11	Unknown			1.10
12	Unknown			1.10
13	Unknown			1.10
14	Unknown			1.10
15	Unknown			1.10
16	Unknown			1.10

RIGHT OF WAY AND TRACK MAP
 CHICAGO AND NORTH-WESTERN RAILWAY
 OPERATED BY THE
 C. & N.W. RY. CO.
 LAKE SHORE DIVISION
 MANITOWOC, WIS. TO KAUKAUNA, WIS.
 STA. 5429 + 73 TO STA. 5640 + 93
 SCALE 1 IN. = 400-FT.
 OFFICE OF CHIEF ENGINEER
 CHICAGO, ILL.

Sheet No. 8, of 26, C. & N.W. Ry.
 from Survey Station 5429+73
 to Survey Station 5640+93
 10-P. 16-S.
 Valuation Engineer



PLATT: G.P.L. MAY 16, 1916
 CHECKED: F.P.L. JUNE 17, 1916



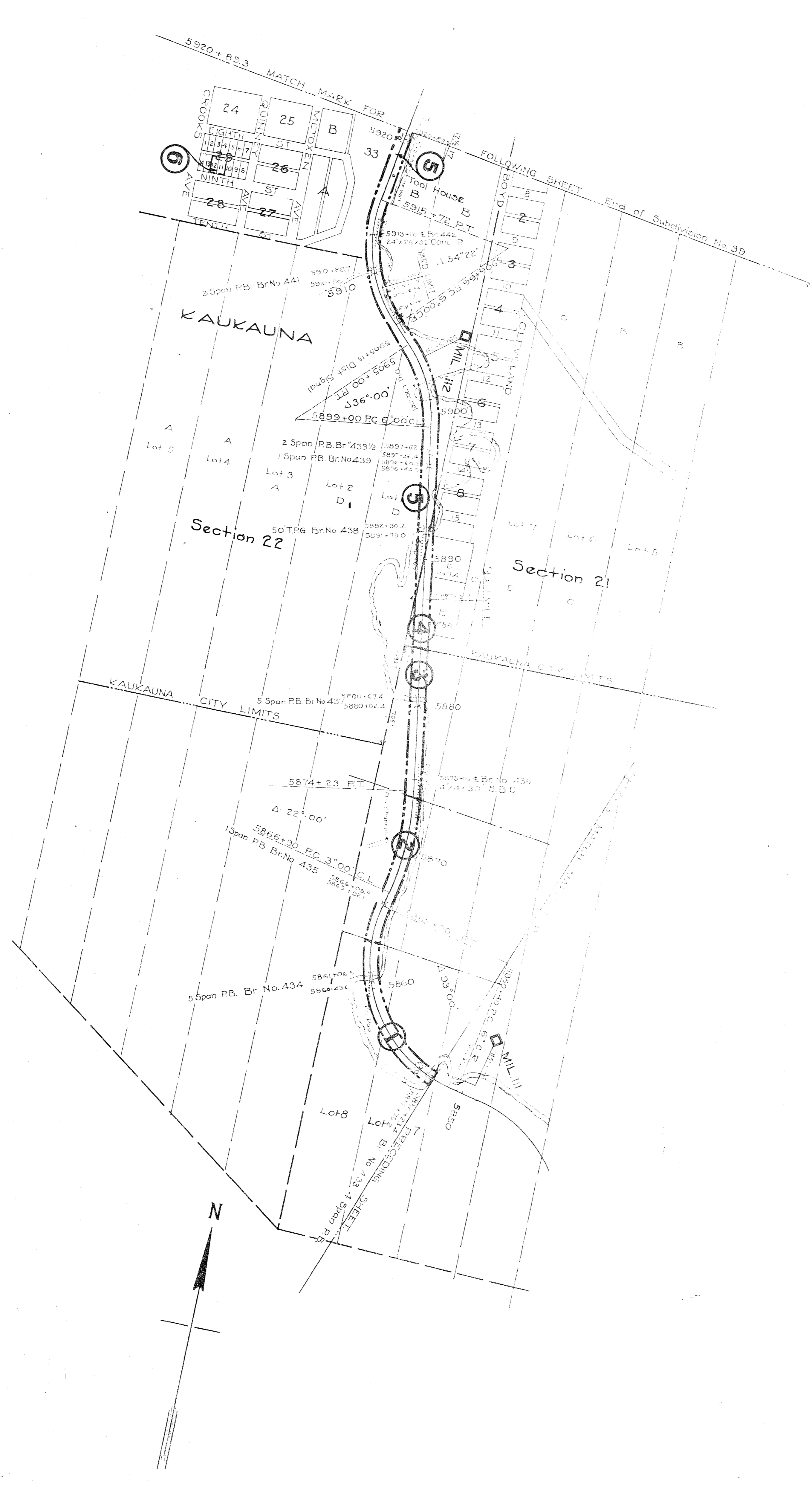
NO.	DESCRIPTION	DATE	BOOK	PAGE	DATE
1	Passover Title				
2	Henry P. H. H. H.				
3	Henry P. H. H. H.				
4	Henry P. H. H. H.				
5	Henry P. H. H. H.				
6	Henry P. H. H. H.				
7	Henry P. H. H. H.				
8	Henry P. H. H. H.				
9	Henry P. H. H. H.				
10	Henry P. H. H. H.				
11	Henry P. H. H. H.				
12	Henry P. H. H. H.				
13	Henry P. H. H. H.				
14	Henry P. H. H. H.				
15	Henry P. H. H. H.				
16	Henry P. H. H. H.				
17	Henry P. H. H. H.				
18	Henry P. H. H. H.				
19	Henry P. H. H. H.				
20	Henry P. H. H. H.				
21	Henry P. H. H. H.				

EQUATION: STA. 5660 TO
 L STA. 5667 = 175'

RIGHT OF WAY AND TRACK MAP
 CHICAGO AND NORTH-WESTERN RAILWAY
 OPERATED BY THE
 C. & N. W. RY. CO.
 LAKE SHORE DIVISION
 MANTOWOC, WIS. TO KAUKAUNA, WIS.
 STA. 5640 + 93 TO STA. 5852 + 13
 SCALE 1 IN. = 400 FT.
 OFFICE OF CHIEF ENGINEER
 CHICAGO, ILL.

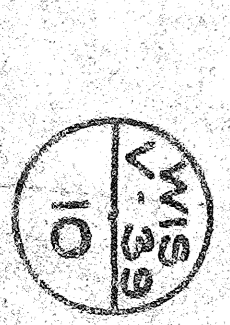
Sheet No. 9 of 26, C. & N. W. Ry.
 from Survey Station 5640+93
 to Survey Station 5852+13.
 10-P. 16-S. Validation Engineer

NO.	DESCRIPTION	DATE	BY	REVISION
1	Original Survey	1914	J. H. ...	1
2	Revised Survey	1914	J. H. ...	2
3	Revised Survey	1914	J. H. ...	3
4	Revised Survey	1914	J. H. ...	4
5	Revised Survey	1914	J. H. ...	5
6	Revised Survey	1914	J. H. ...	6
7	Revised Survey	1914	J. H. ...	7
8	Revised Survey	1914	J. H. ...	8
9	Revised Survey	1914	J. H. ...	9
10	Revised Survey	1914	J. H. ...	10



Sheet No. 10, of 26, C. & N.W. Ry.
 from Survey Station 5852+13
 to Survey Station 5920+893
 10-P. 16-S. *W. H. ...*
 Valuation Engineer

RIGHT OF WAY AND TRACK MAP
CHICAGO AND NORTH-WESTERN RAILWAY
 OPERATED BY THE
C. & N.W. RY. CO.
 LAKE SHORE DIVISION
MANITOWOC, WIS. TO KAUKAUNA, WIS.
 STA. 5852 + 13 TO STA. 5920 + 893
 SCALE 1 IN. = 400-FT.
 OFFICE OF CHIEF ENGINEER
 JUNE 30, 1911
 CHICAGO, ILL.



PLATTED
 RECORDED
 MAY 18 1911
 CHICAGO