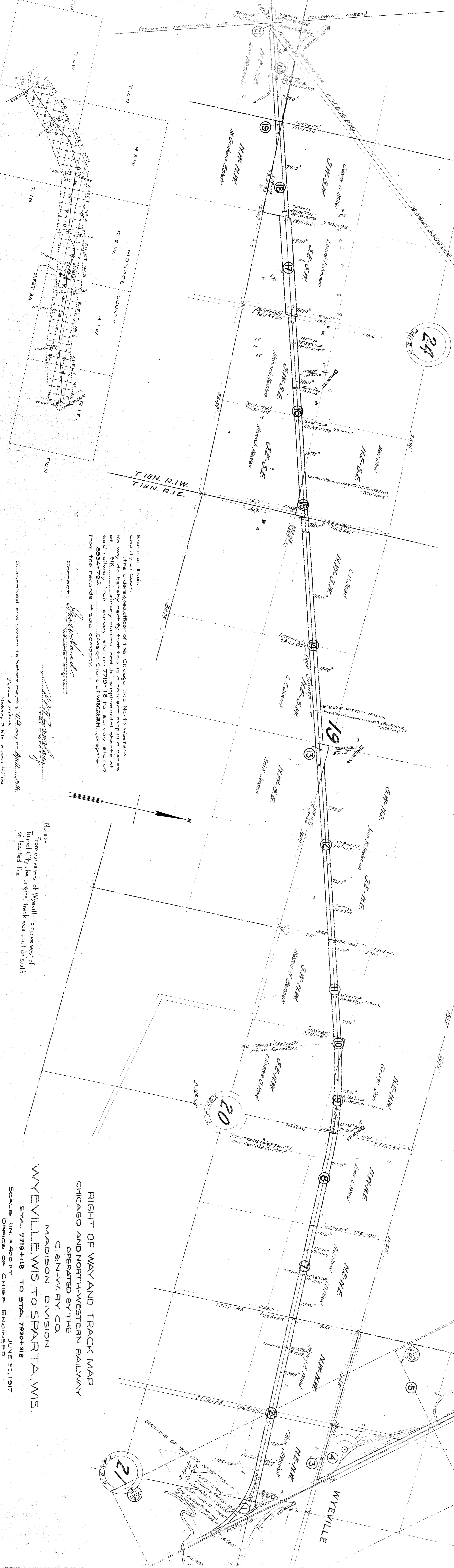


NO.	SURVEY	DATE	RECORDED	INDEXED	FILED	APPROVED
1.	C. St. P. M. & O. Ry. Co. W.S.A.R.R. Ry.	June 14, 1910	92	567	July 21, 1910	1 55 46
2.	Christian C. Stenslie, etc.	Mar. 18, 1910	29	158	Mar. 24, 1910	6 26 4
3.	Superior Town of Byron	June 20, 1911	Office	Local 2067	Apr. 19, 1911	8 75 4
4.	Christian C. Stenslie, etc.	Apr. 7, 1911	3	355	Apr. 25, 1911	8 75 4
5.	A. T. Woodcock & W.	May 10, 1911	123	372	June 2, 1911	33 40 4
6.	Robert D. Hutchins & W.	Apr. 17, 1912	29	216	Apr. 23, 1912	3 04 4
7.	John D. Woodcock & W.	Mar. 17, 1910	29	150	Mar. 24, 1910	8 04 4
8.	Charles O. Wood et al	Mar. 17, 1912	23	146	Mar. 24, 1912	2 07 4
9.	George Ober - Indian Allotment	Mar. 11, 1910	25	152	Mar. 24, 1910	2 05 4
10.	Frank A. Bennett et al	Mar. 18, 1910	29	151	Mar. 24, 1910	3 12 4
11.	John M. Anderson	Apr. 6, 1910	29	170	Apr. 11, 1910	1 21 4
12.	Eric Gustafson & Emma W. Smart	Mar. 20, 1910	29	168	Apr. 11, 1910	7 15 4
13.	Bert D. Steinhilber & W.	Mar. 18, 1910	29	157	Mar. 24, 1910	1 52 4
14.	Henry Kasdon & W.	Mar. 18, 1910	29	157	Mar. 24, 1910	4 89 4
15.	George S. Waller	Mar. 18, 1910	29	156	Mar. 24, 1910	5 67 4
16.	Sherwin W. Graham	Mar. 18, 1910	29	156	Mar. 24, 1910	5 77 4
17.	John W. Anderson & W.	Mar. 18, 1910	29	157	Mar. 24, 1910	5 77 4
18.	John W. Anderson & W.	Mar. 18, 1910	29	157	Mar. 24, 1910	5 77 4
19.	John W. Anderson & W.	Mar. 18, 1910	29	157	Mar. 24, 1910	5 77 4
20.	John W. Anderson & W.	Mar. 18, 1910	29	157	Mar. 24, 1910	5 77 4
21.	John W. Anderson & W.	Mar. 18, 1910	29	157	Mar. 24, 1910	5 77 4
22.	C. M. & S. Ry. Co.	Apr. 10, 1910	29	301	Apr. 10, 1910	3 60 4



State of Illinois,
County of Cook,
I, the undersigned officer of the Chicago and North-Western Railway do hereby certify that this is a correct map in a series of six primary sheets and 13 supplemental sheets of said railway from survey station 7719+118 to survey station 8234+795. Division, State of Wisconsin, prepared from the records of said company.

Correct: *W. J. Anderson*
Valuation Engineer

W. J. Anderson
Chief Engineer

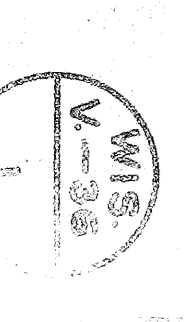
Subscribed and sworn to before me this 11th day of April, 1916.
Jesse J. Smith,
Notary Public in and for the State of Illinois.

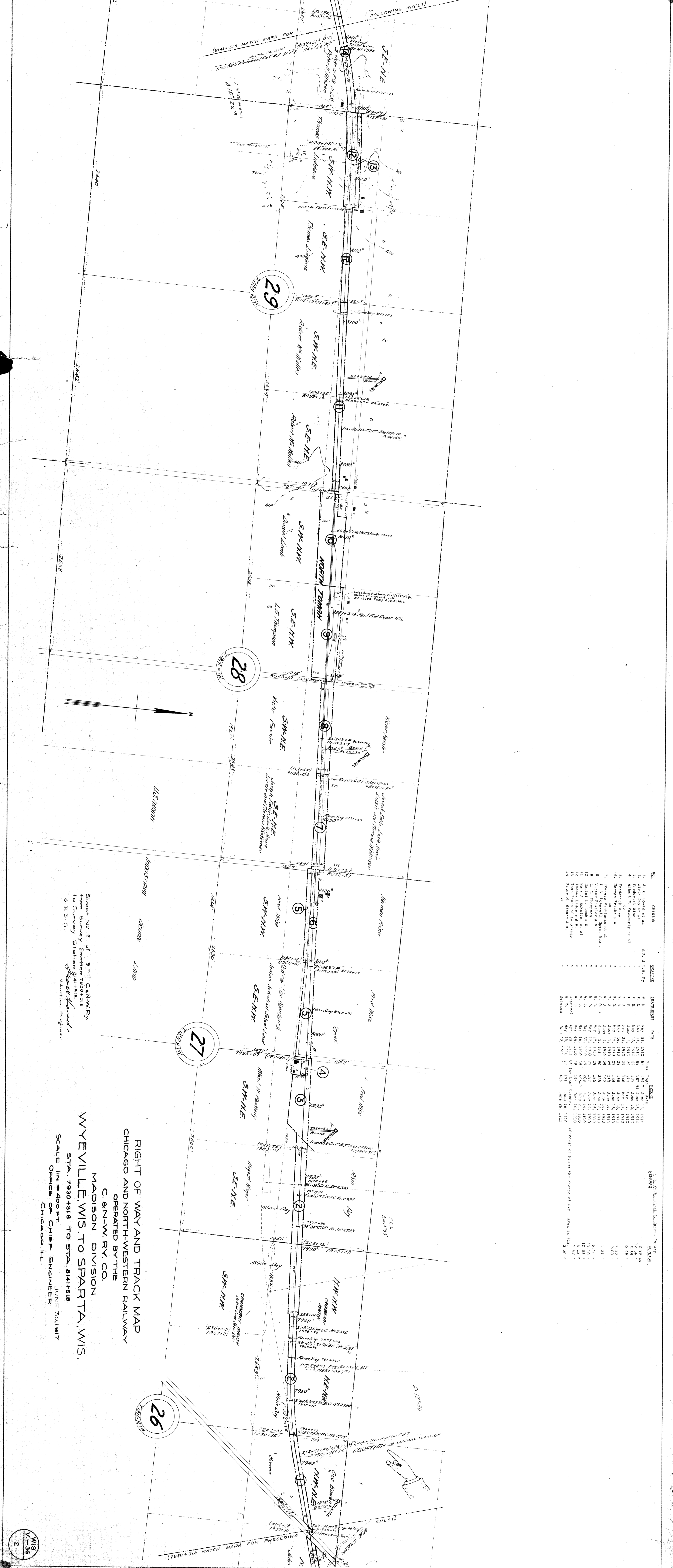
My commission expires May 11th, 1918.

Notes:-
From curve west of Weyville to curve west of Tunnel City the original track was built 65° south of located line.

RIGHT OF WAY AND TRACK MAP
CHICAGO AND NORTH-WESTERN RAILWAY
OPERATED BY THE
C. & N. W. RY. CO.
MADISON DIVISION
WYEVILLE, WIS. TO SPARTA, WIS.
STA. 7719+118 TO STA. 7930+318
SCALE 1 IN. = 400 FT.
OFFICE OF CHIEF ENGINEER
CHICAGO, ILL. JUNE 30, 1917

INDEX MAP
SCALE 1 IN. = 2 MI.





RIGHT OF WAY AND TRACK MAP
 CHICAGO AND NORTH-WESTERN RAILWAY
 OPERATED BY THE
 C. & N. W. RY. CO.
 MADISON DIVISION
 WYEVILLE, WIS. TO SPARTA, WIS.
 STA. 7930+31.8 TO STA. 8141+51.8
 SCALE 1" = 400 FT.
 OFFICE OF CHIEF ENGINEER
 CHICAGO, ILL.

34

27

26

25

24

Sheet No. 3 of 18, C & N.W.R.Y.
 from Survey Station 814+518
 to Survey Station 835+718
 6 P. 5 S.
W.C. H. H. H.
 Valuation Engineer

Note:-
 From curve west of Weyville to curve
 west of Tunnel City the original track was
 built 05 south of located line

RIGHT OF WAY AND TRACK MAP
 CHICAGO AND NORTH-WESTERN RAILWAY
 OPERATED BY THE
 C. & N.W. RY. CO.
 MADISON DIVISION
 WYEVILLE, WIS. TO SPARTA, WIS.
 SCALE 1 IN. = 400 FT.
 OFFICE OF CHIEF ENGINEER
 CHICAGO, ILL.

NO.	DATE	BY	REVISION	DESCRIPTION
1.	May 18, 1910	J. H. B.	130	Book
2.	May 18, 1910	J. H. B.	130	Plan
3.	May 18, 1910	J. H. B.	130	Profile
4.	May 18, 1910	J. H. B.	130	Location
5.	May 18, 1910	J. H. B.	130	Plan
6.	May 18, 1910	J. H. B.	130	Profile
7.	May 18, 1910	J. H. B.	130	Location
8.	May 18, 1910	J. H. B.	130	Plan
9.	May 18, 1910	J. H. B.	130	Profile
10.	May 18, 1910	J. H. B.	130	Location
11.	May 18, 1910	J. H. B.	130	Plan
12.	May 18, 1910	J. H. B.	130	Profile
13.	May 18, 1910	J. H. B.	130	Location
14.	May 18, 1910	J. H. B.	130	Plan
15.	May 18, 1910	J. H. B.	130	Profile
16.	May 18, 1910	J. H. B.	130	Location
17.	May 18, 1910	J. H. B.	130	Plan
18.	May 18, 1910	J. H. B.	130	Profile
19.	May 18, 1910	J. H. B.	130	Location
20.	May 18, 1910	J. H. B.	130	Plan
21.	May 18, 1910	J. H. B.	130	Profile
22.	May 18, 1910	J. H. B.	130	Location
23.	May 18, 1910	J. H. B.	130	Plan
24.	May 18, 1910	J. H. B.	130	Profile
25.	May 18, 1910	J. H. B.	130	Location
26.	May 18, 1910	J. H. B.	130	Plan
27.	May 18, 1910	J. H. B.	130	Profile
28.	May 18, 1910	J. H. B.	130	Location
29.	May 18, 1910	J. H. B.	130	Plan
30.	May 18, 1910	J. H. B.	130	Profile
31.	May 18, 1910	J. H. B.	130	Location
32.	May 18, 1910	J. H. B.	130	Plan
33.	May 18, 1910	J. H. B.	130	Profile
34.	May 18, 1910	J. H. B.	130	Location
35.	May 18, 1910	J. H. B.	130	Plan
36.	May 18, 1910	J. H. B.	130	Profile
37.	May 18, 1910	J. H. B.	130	Location
38.	May 18, 1910	J. H. B.	130	Plan
39.	May 18, 1910	J. H. B.	130	Profile
40.	May 18, 1910	J. H. B.	130	Location
41.	May 18, 1910	J. H. B.	130	Plan
42.	May 18, 1910	J. H. B.	130	Profile
43.	May 18, 1910	J. H. B.	130	Location
44.	May 18, 1910	J. H. B.	130	Plan
45.	May 18, 1910	J. H. B.	130	Profile
46.	May 18, 1910	J. H. B.	130	Location
47.	May 18, 1910	J. H. B.	130	Plan
48.	May 18, 1910	J. H. B.	130	Profile
49.	May 18, 1910	J. H. B.	130	Location
50.	May 18, 1910	J. H. B.	130	Plan
51.	May 18, 1910	J. H. B.	130	Profile
52.	May 18, 1910	J. H. B.	130	Location
53.	May 18, 1910	J. H. B.	130	Plan
54.	May 18, 1910	J. H. B.	130	Profile
55.	May 18, 1910	J. H. B.	130	Location
56.	May 18, 1910	J. H. B.	130	Plan
57.	May 18, 1910	J. H. B.	130	Profile
58.	May 18, 1910	J. H. B.	130	Location
59.	May 18, 1910	J. H. B.	130	Plan
60.	May 18, 1910	J. H. B.	130	Profile
61.	May 18, 1910	J. H. B.	130	Location
62.	May 18, 1910	J. H. B.	130	Plan
63.	May 18, 1910	J. H. B.	130	Profile
64.	May 18, 1910	J. H. B.	130	Location
65.	May 18, 1910	J. H. B.	130	Plan
66.	May 18, 1910	J. H. B.	130	Profile
67.	May 18, 1910	J. H. B.	130	Location
68.	May 18, 1910	J. H. B.	130	Plan
69.	May 18, 1910	J. H. B.	130	Profile
70.	May 18, 1910	J. H. B.	130	Location
71.	May 18, 1910	J. H. B.	130	Plan
72.	May 18, 1910	J. H. B.	130	Profile
73.	May 18, 1910	J. H. B.	130	Location
74.	May 18, 1910	J. H. B.	130	Plan
75.	May 18, 1910	J. H. B.	130	Profile
76.	May 18, 1910	J. H. B.	130	Location
77.	May 18, 1910	J. H. B.	130	Plan
78.	May 18, 1910	J. H. B.	130	Profile
79.	May 18, 1910	J. H. B.	130	Location
80.	May 18, 1910	J. H. B.	130	Plan
81.	May 18, 1910	J. H. B.	130	Profile
82.	May 18, 1910	J. H. B.	130	Location
83.	May 18, 1910	J. H. B.	130	Plan
84.	May 18, 1910	J. H. B.	130	Profile
85.	May 18, 1910	J. H. B.	130	Location
86.	May 18, 1910	J. H. B.	130	Plan
87.	May 18, 1910	J. H. B.	130	Profile
88.	May 18, 1910	J. H. B.	130	Location
89.	May 18, 1910	J. H. B.	130	Plan
90.	May 18, 1910	J. H. B.	130	Profile
91.	May 18, 1910	J. H. B.	130	Location
92.	May 18, 1910	J. H. B.	130	Plan
93.	May 18, 1910	J. H. B.	130	Profile
94.	May 18, 1910	J. H. B.	130	Location
95.	May 18, 1910	J. H. B.	130	Plan
96.	May 18, 1910	J. H. B.	130	Profile
97.	May 18, 1910	J. H. B.	130	Location
98.	May 18, 1910	J. H. B.	130	Plan
99.	May 18, 1910	J. H. B.	130	Profile
100.	May 18, 1910	J. H. B.	130	Location

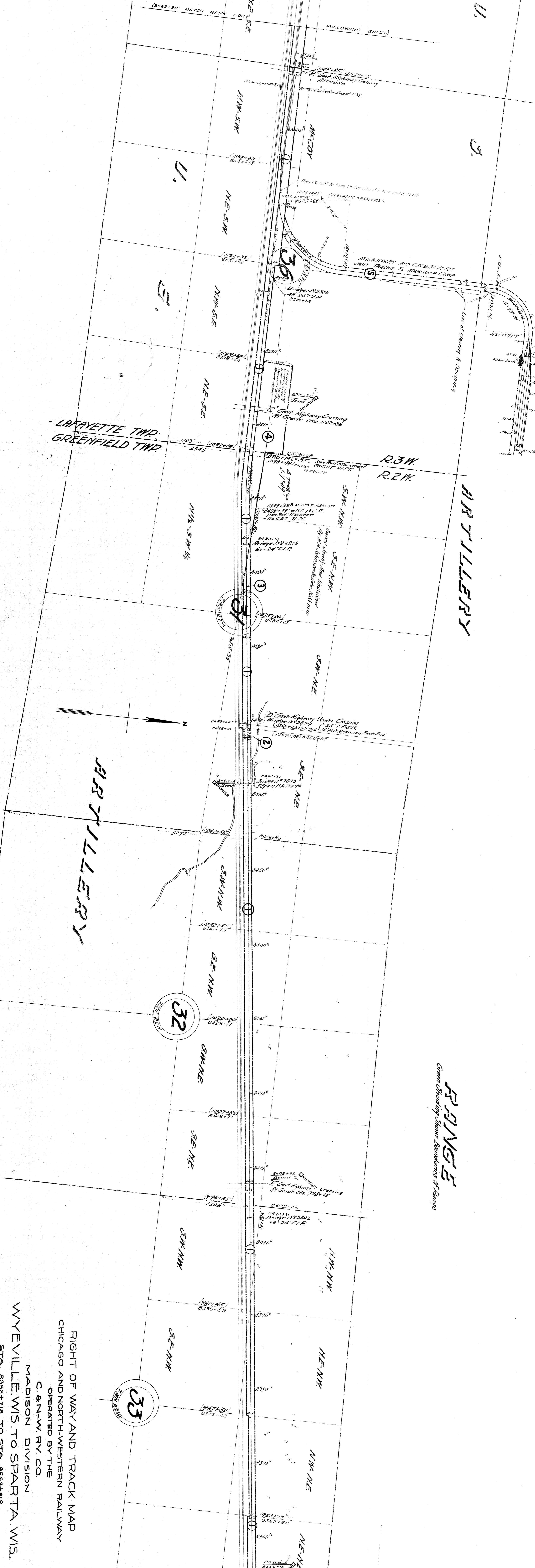
V-36
W-18
3

U.S. GOVT. MANAGER CAMP

HARTILLERY

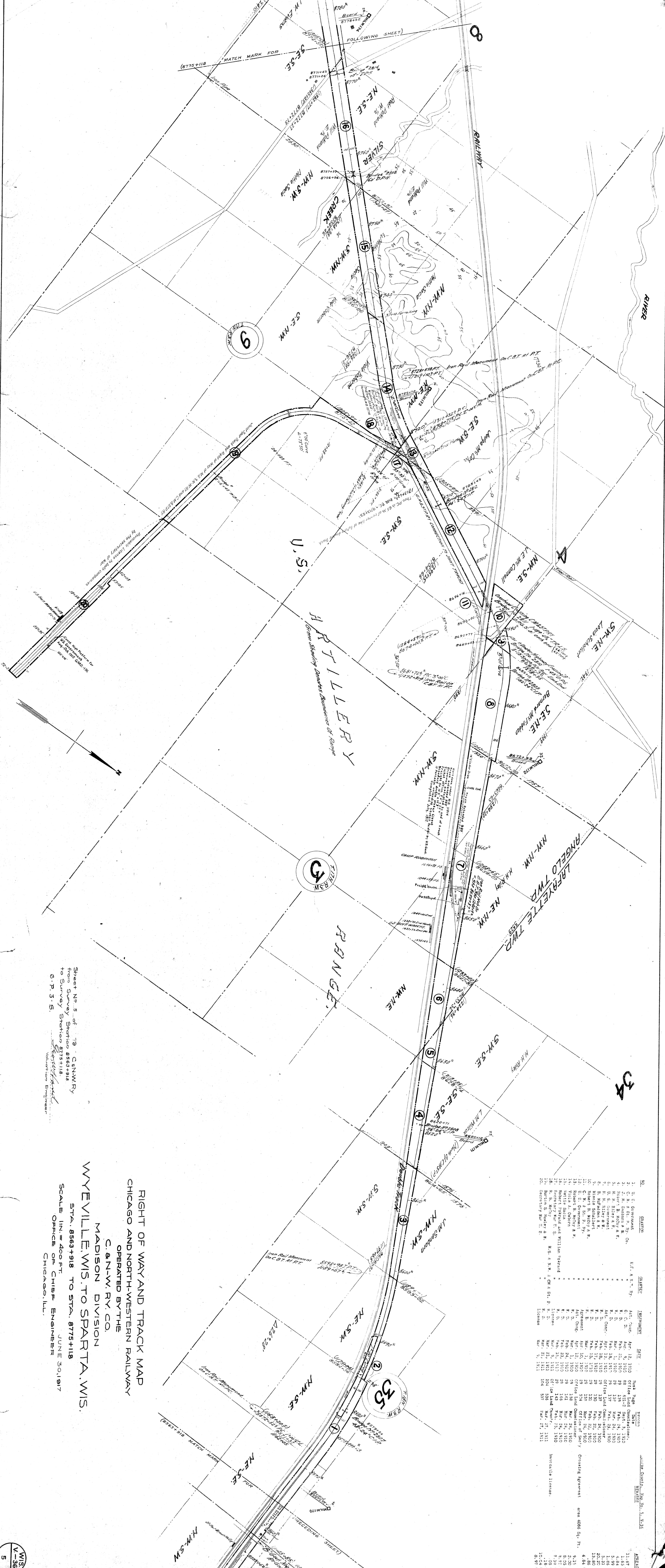
SPRINGE
Green Shading Shows Boundaries of Camp

NO.	NAME	U.S. A. R. R. RY.	ACQ. DATE	NEW	NO. OF PAGES	DATE	ISSUE	APPROX.
1.	U. S. Government		4-23-10	29	175	MAY 7, 1910		\$2.98 AG.
2.	W. F. I. ROSS		4-23-10	29	175	MAY 7, 1910		.75 "
3.	H. B. JOHNSON ET AL.		4-23-10	29	175	MAY 7, 1910		1.50 "
4.	Secretary War U.S.		5-13-10	Office of Land Commissioner				15.00 "
5.	DO		7-21-10	Office Land Commissioner				



RIGHT OF WAY AND TRACK MAP
CHICAGO AND NORTH-WESTERN RAILWAY
OPERATED BY THE
C. & N. W. RY. CO.
MADISON DIVISION
WYEVILLE, WIS. TO SPARTA, WIS.
STA. 8352+71.8 TO STA. 8563+91.8
SCALE 1/4" = 400 FT.
JUNE 30, 1917
OFFICE OF CHIEF ENGINEER
CHICAGO, ILL.

Sheet No. 4 of 9 CANW.R.Y.
from Survey Station 8352+71.8
to Survey Station 8563+91.8
6-P-3-S
Voluntary Engineer



NO.	GRANTEE	DATE	RECORD	ACREAGE
1.	U. S. Government	Apr. 12, 1910	Office Land Commission	11.67 Ac.
2.	C. M. & St. P. Ry. Co.	Feb. 21, 1910	Pat. 3, 1910	1.63 "
3.	J. M. Gordon & W. R.	Mar. 21, 1910	Pat. 152	1.63 "
4.	H. H. Riley & W. R.	Mar. 21, 1910	Pat. 152	1.63 "
5.	H. H. Riley & W. R.	Mar. 24, 1910	Pat. 152	1.68 "
6.	U. S. Government	Apr. 12, 1910	Office Land Commission	1.68 "
7.	U. S. Government	Apr. 12, 1910	Office Land Commission	1.68 "
8.	Robert B. McCoy & W. R.	Feb. 18, 1910	Pat. 24, 1910	13.80 "
9.	Robert B. McCoy & W. R.	Feb. 17, 1910	Pat. 22, 1910	1.88 "
10.	Robert B. McCoy & W. R.	Mar. 1, 1910	Pat. 22, 1910	1.88 "
11.	U. S. Government	Apr. 10, 1910	Office Land Commission	9.15 "
12.	U. S. Government	Apr. 12, 1910	Office Land Commission	3.25 "
13.	U. S. Government	Apr. 12, 1910	Office Land Commission	3.25 "
14.	Robert B. McCoy & W. R.	Feb. 24, 1910	Pat. 24, 1910	7.37 "
15.	Robert B. McCoy & W. R.	Mar. 21, 1910	Pat. 24, 1910	1.88 "
16.	Robert B. McCoy & W. R.	Mar. 21, 1910	Pat. 24, 1910	1.88 "
17.	Robert B. McCoy & W. R.	Mar. 21, 1910	Pat. 24, 1910	1.88 "
18.	Robert B. McCoy & W. R.	Mar. 21, 1910	Pat. 24, 1910	1.88 "
19.	Robert B. McCoy & W. R.	Mar. 21, 1910	Pat. 24, 1910	1.88 "
20.	Robert B. McCoy & W. R.	Mar. 21, 1910	Pat. 24, 1910	1.88 "

Sheet No. 5 of 79 - CENWRY
 from Survey Station 8563918
 to Survey Station 8775118
 G.P. 3-5
 Vol. 100
 Chief Engineer

RIGHT OF WAY AND TRACK MAP
 CHICAGO AND NORTH-WESTERN RAILWAY
 OPERATED BY THE
 C. & N. W. RY. CO.
 MADISON DIVISION
 WYEVILLE, WIS. TO SPARTA, WIS.
 STA. 8563+918 TO STA. 8775+118
 SCALE 1 IN. = 400 FT.
 OFFICE OF CHIEF ENGINEER
 CHICAGO, ILL. JUNE 30, 1917

NO.	NAME	DATE	REMARKS	SCALE	DATE
1.	Superior Iron Road	1910	Chicago & North-Western R.R.	1:100	1917
2.	H. J. Masters & Co.	1911	Chicago & North-Western R.R.	1:100	1917
3.	Burton & Co.	1911	Chicago & North-Western R.R.	1:100	1917
4.	Frank B. Nichols	1911	Chicago & North-Western R.R.	1:100	1917
5.	J. J. McDonald & Co.	1911	Chicago & North-Western R.R.	1:100	1917
6.	J. J. McDonald & Co.	1911	Chicago & North-Western R.R.	1:100	1917
7.	J. J. McDonald & Co.	1911	Chicago & North-Western R.R.	1:100	1917
8.	J. J. McDonald & Co.	1911	Chicago & North-Western R.R.	1:100	1917
9.	J. J. McDonald & Co.	1911	Chicago & North-Western R.R.	1:100	1917
10.	J. J. McDonald & Co.	1911	Chicago & North-Western R.R.	1:100	1917
11.	J. J. McDonald & Co.	1911	Chicago & North-Western R.R.	1:100	1917
12.	J. J. McDonald & Co.	1911	Chicago & North-Western R.R.	1:100	1917
13.	J. J. McDonald & Co.	1911	Chicago & North-Western R.R.	1:100	1917
14.	J. J. McDonald & Co.	1911	Chicago & North-Western R.R.	1:100	1917
15.	J. J. McDonald & Co.	1911	Chicago & North-Western R.R.	1:100	1917
16.	J. J. McDonald & Co.	1911	Chicago & North-Western R.R.	1:100	1917
17.	J. J. McDonald & Co.	1911	Chicago & North-Western R.R.	1:100	1917
18.	J. J. McDonald & Co.	1911	Chicago & North-Western R.R.	1:100	1917
19.	J. J. McDonald & Co.	1911	Chicago & North-Western R.R.	1:100	1917
20.	J. J. McDonald & Co.	1911	Chicago & North-Western R.R.	1:100	1917
21.	J. J. McDonald & Co.	1911	Chicago & North-Western R.R.	1:100	1917

Note:
 Stationing marked "R" is retraining.
 All other stationing is original location.
 Located line is center-line of proposed double track system.
 and center-line of right of way on which retraining was made, except as noted.
 From curve west of Tunnel City to Spartia the original track
 was built 65' north of located line.
 From curve at junction with old P&W west of Needah to curve west of Weyville
 the original location is in center of old P&W track, future second track to be 13' north.
 For location of original track see intermediate notes.
 Right of Way checked by Land Dept records, May 1912.

RIGHT OF WAY AND TRACK MAP
 CHICAGO AND NORTH-WESTERN RAILWAY
 OPERATED BY THE
 C. & N. W. RY. CO.
 MADISON DIVISION
 WYEVILLE, WIS. TO SPARTIA, WIS.
 STA. 8775+118 TO STA. 8934+795
 SCALE 1" = 400 FT.
 JUNE 30, 1917
 OFFICE OF CHIEF ENGINEER
 CHICAGO, ILL.

Sheet No 6 of 9 C&N.W.R.Y.
 from Survey Station 8775+118
 to Survey Station 8934+795
 G. P. S. S.
 Valuation Engineer

