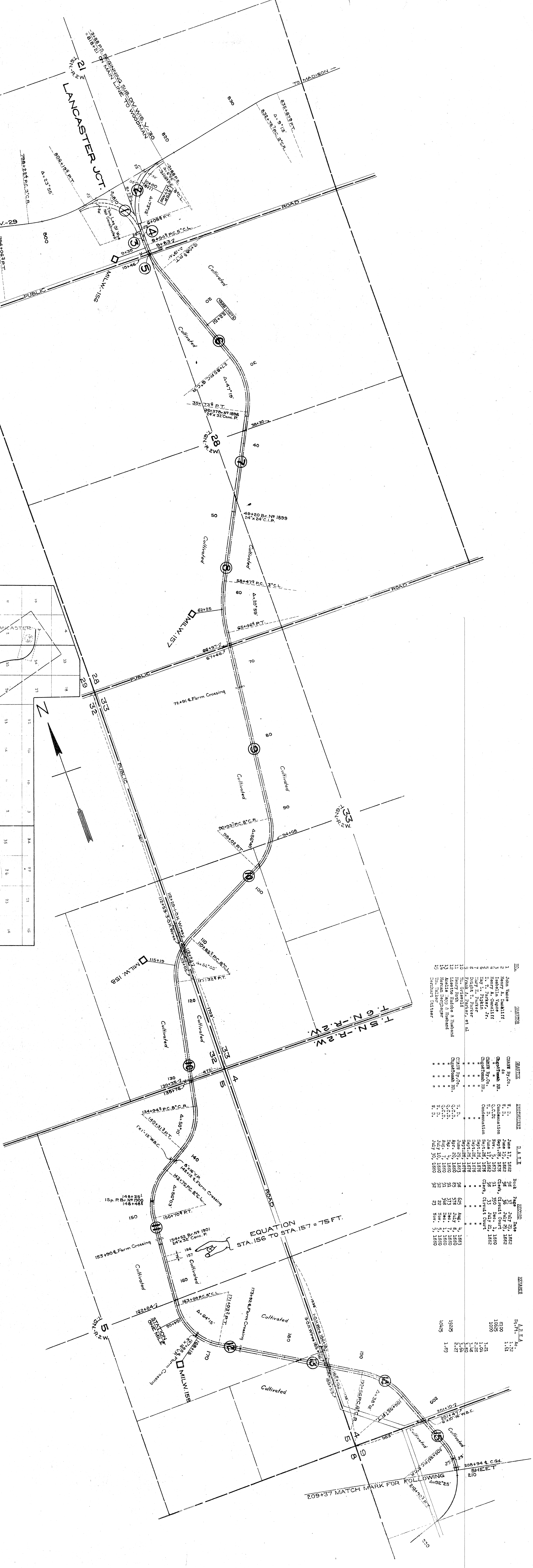
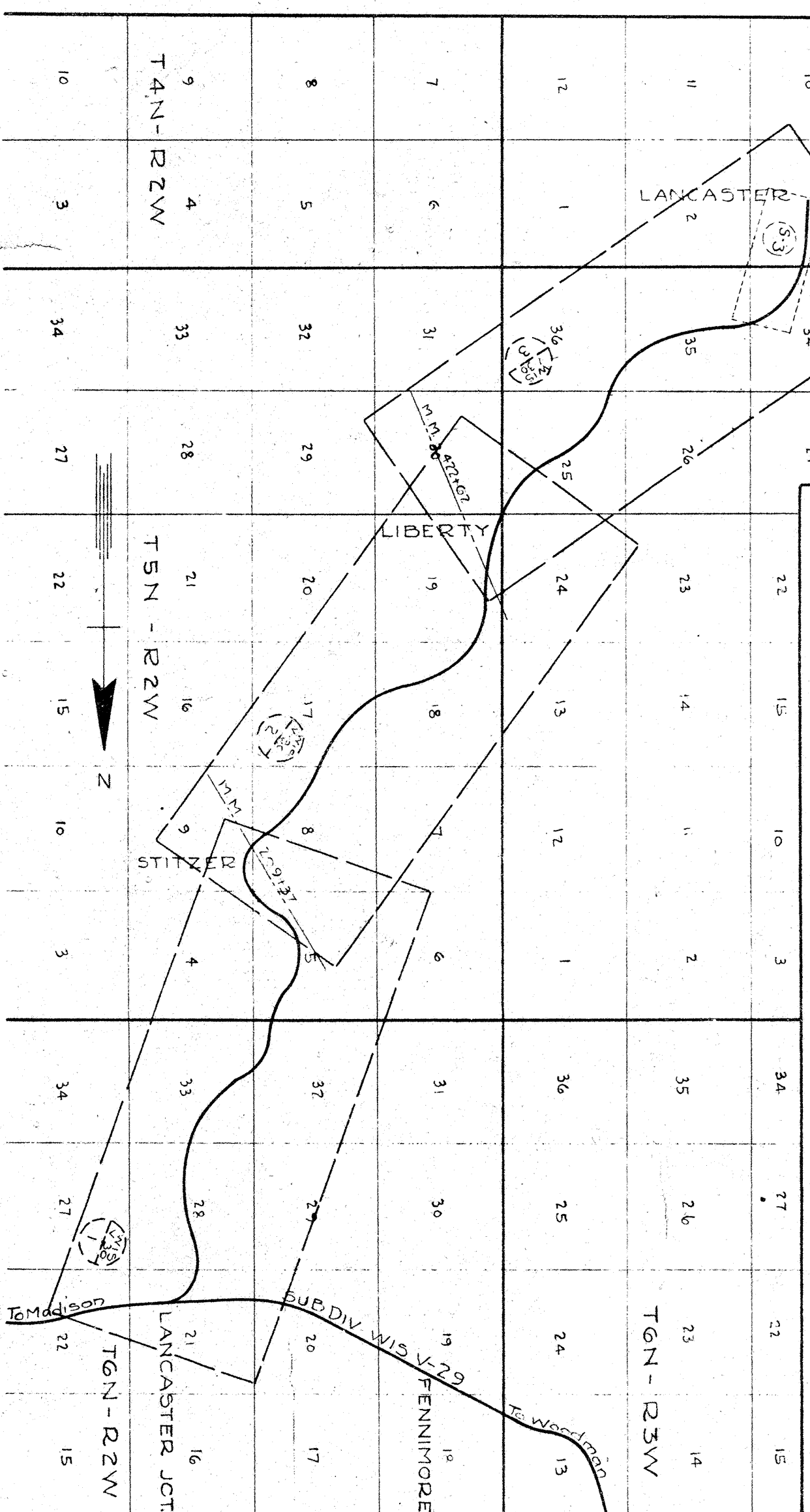


PLATTED-B.M.N.-DEC. 1896
 DRAWING NOTES-F.W.C.-JAN 8, 1917
 CHECKED-B.M.N.-JAN 28, 1917



NO.	NAME	DATE	BOOK	PAGE	REMARKS
1	John Vance	June 17, 1882	98	172	
2	John Vance	June 17, 1882	98	172	
3	Isabella Vance	June 17, 1882	98	172	
4	Henry A. Schell	June 17, 1882	98	172	
5	Henry A. Schell	June 17, 1882	98	172	
6	Henry A. Schell	June 17, 1882	98	172	
7	Henry A. Schell	June 17, 1882	98	172	
8	Henry A. Schell	June 17, 1882	98	172	
9	Henry A. Schell	June 17, 1882	98	172	
10	Henry A. Schell	June 17, 1882	98	172	
11	Henry A. Schell	June 17, 1882	98	172	
12	Henry A. Schell	June 17, 1882	98	172	
13	Henry A. Schell	June 17, 1882	98	172	
14	Henry A. Schell	June 17, 1882	98	172	
15	Henry A. Schell	June 17, 1882	98	172	

State of Illinois
 County of Cook
 I, the undersigned, officer of the Chicago and North Western Railway do hereby certify that this is a correct map in a series of 3 primary sheets and 1 supplemental sheets of said railway from survey station 3+88 to survey station 635+87 M.A.D. Division, State of W.I.S. prepared from the records of said company.

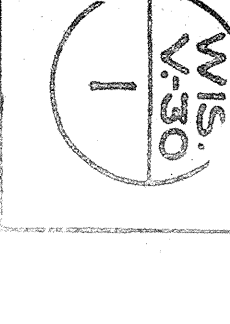
Correct Valuation Engineer
Walter H. ...

Subscribed and sworn to before me, this 26th day of December, 1917.
 Notary Public in and for the County of Cook, State of Illinois
Walter H. ...

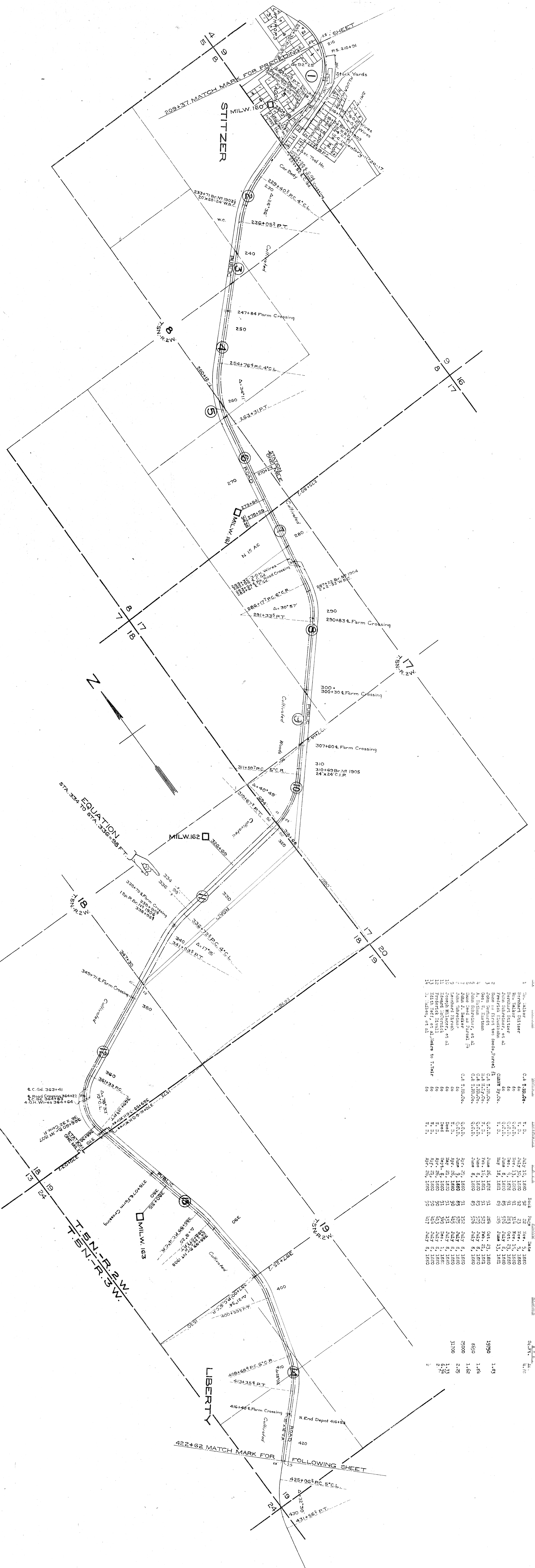
My commission expires April 27, 1921.

RIGHT OF WAY AND TRACK MAP
 CHICAGO AND NORTH-WESTERN RAILWAY
 OPERATED BY THE
 C. & N. W. RY. CO.
 MADISON DIVISION
 LANCASTER JCT., WIS. TO LANCASTER, WIS.

SCALE 1-IN. = 400 FT.
 STA. 3+88 TO STA. 209+37
 JUNE 30, 1917.
 OFFICE OF CHIEF ENGINEER
 CHICAGO, ILL.



PLATTED - JAN. 22, 1918
 TRACKED - OCT. 1, 1917
 CHECKED - B. B. W. (J. B. W.)



NO.	NAME	DATE	REMARKS
1	Benjamin Stitzer	July 10, 1880	C. & N. W. Ry. Co.
2	John Schreiber	July 10, 1880	C. & N. W. Ry. Co.
3	John Schreiber	July 10, 1880	C. & N. W. Ry. Co.
4	John Schreiber	July 10, 1880	C. & N. W. Ry. Co.
5	John Schreiber	July 10, 1880	C. & N. W. Ry. Co.
6	John Schreiber	July 10, 1880	C. & N. W. Ry. Co.
7	John Schreiber	July 10, 1880	C. & N. W. Ry. Co.
8	John Schreiber	July 10, 1880	C. & N. W. Ry. Co.
9	John Schreiber	July 10, 1880	C. & N. W. Ry. Co.
10	John Schreiber	July 10, 1880	C. & N. W. Ry. Co.
11	John Schreiber	July 10, 1880	C. & N. W. Ry. Co.
12	John Schreiber	July 10, 1880	C. & N. W. Ry. Co.
13	John Schreiber	July 10, 1880	C. & N. W. Ry. Co.
14	John Schreiber	July 10, 1880	C. & N. W. Ry. Co.
15	John Schreiber	July 10, 1880	C. & N. W. Ry. Co.
16	John Schreiber	July 10, 1880	C. & N. W. Ry. Co.
17	John Schreiber	July 10, 1880	C. & N. W. Ry. Co.
18	John Schreiber	July 10, 1880	C. & N. W. Ry. Co.
19	John Schreiber	July 10, 1880	C. & N. W. Ry. Co.
20	John Schreiber	July 10, 1880	C. & N. W. Ry. Co.
21	John Schreiber	July 10, 1880	C. & N. W. Ry. Co.
22	John Schreiber	July 10, 1880	C. & N. W. Ry. Co.
23	John Schreiber	July 10, 1880	C. & N. W. Ry. Co.
24	John Schreiber	July 10, 1880	C. & N. W. Ry. Co.
25	John Schreiber	July 10, 1880	C. & N. W. Ry. Co.

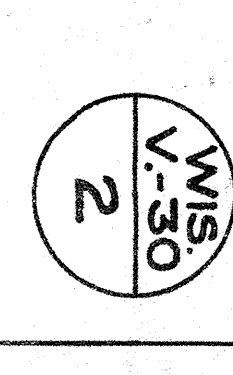
Sheet No. 2 of 3 Primary Sheets
 and Supplemental Sheet
 of C. & N. W. Ry. from Survey Station
 209+37 to Survey Station 422+62

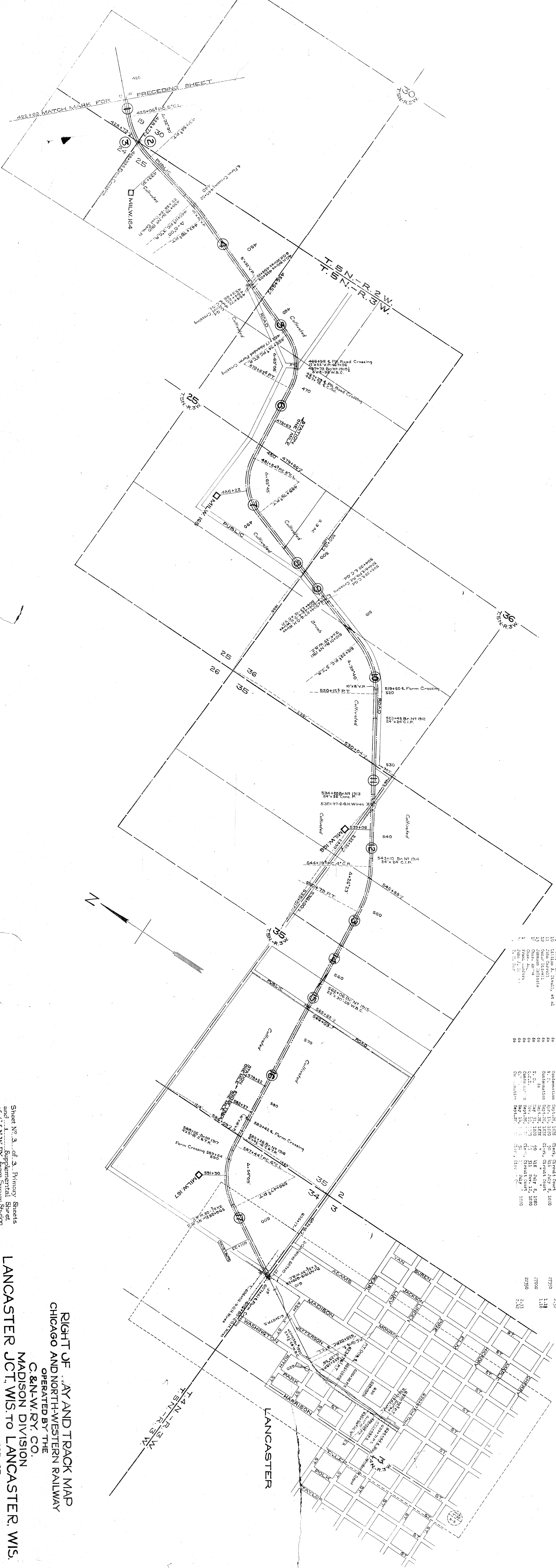
LANCASTER JCT., WIS. TO LANCASTER, WIS.

RIGHT OF WAY AND TRACK MAP
 CHICAGO AND NORTH-WESTERN RAILWAY
 OPERATED BY THE
 C. & N. W. RY. CO.
 MADISON DIVISION

SCALE 1" = 400 FT.
 OFFICE OF CHIEF ENGINEER
 CHICAGO, ILL.

JUNE 30, 1917





NO.	OWNER	SECTION	DATE	BACK	PERIOD	DATE
1	F. Talbot, et al	C.A. 230-200	Mar. 20, 1880	90	July 8, 1880	
2	H. Talbot, et al	C.A. 230-200	Mar. 20, 1880	90	July 8, 1881	
3	F. Talbot, et al	C.A. 230-200	Mar. 20, 1880	90	July 8, 1882	
4	F. Talbot, et al	C.A. 230-200	Mar. 20, 1880	90	July 8, 1883	
5	H. Talbot, et al	C.A. 230-200	Mar. 20, 1880	90	July 8, 1884	
6	F. Talbot, et al	C.A. 230-200	Mar. 20, 1880	90	July 8, 1885	
7	H. Talbot, et al	C.A. 230-200	Mar. 20, 1880	90	July 8, 1886	
8	F. Talbot, et al	C.A. 230-200	Mar. 20, 1880	90	July 8, 1887	
9	H. Talbot, et al	C.A. 230-200	Mar. 20, 1880	90	July 8, 1888	
10	F. Talbot, et al	C.A. 230-200	Mar. 20, 1880	90	July 8, 1889	
11	H. Talbot, et al	C.A. 230-200	Mar. 20, 1880	90	July 8, 1890	
12	F. Talbot, et al	C.A. 230-200	Mar. 20, 1880	90	July 8, 1891	
13	H. Talbot, et al	C.A. 230-200	Mar. 20, 1880	90	July 8, 1892	
14	F. Talbot, et al	C.A. 230-200	Mar. 20, 1880	90	July 8, 1893	
15	H. Talbot, et al	C.A. 230-200	Mar. 20, 1880	90	July 8, 1894	
16	F. Talbot, et al	C.A. 230-200	Mar. 20, 1880	90	July 8, 1895	
17	H. Talbot, et al	C.A. 230-200	Mar. 20, 1880	90	July 8, 1896	
18	F. Talbot, et al	C.A. 230-200	Mar. 20, 1880	90	July 8, 1897	
19	H. Talbot, et al	C.A. 230-200	Mar. 20, 1880	90	July 8, 1898	
20	F. Talbot, et al	C.A. 230-200	Mar. 20, 1880	90	July 8, 1899	
21	H. Talbot, et al	C.A. 230-200	Mar. 20, 1880	90	July 8, 1900	

Sheet No. 3 of 3. Primary Sheets
 and Supplemental Sheet
 of C.&N.W.Ry. from Survey Station
 422+62 to Survey Station 635+87

RIGHT OF WAY AND TRACK MAP
 CHICAGO AND NORTH-WESTERN RAILWAY
 OPERATED BY THE
 C.&N.W.RY. CO.
 MADISON DIVISION
 LANCASTER JCT. WIS. TO LANCASTER, WIS.
 SCALE 1" = 400 FT.
 OFFICE OF CHIEF ENGINEER
 CHICAGO, ILL.
 JUNE 30, 1917.

