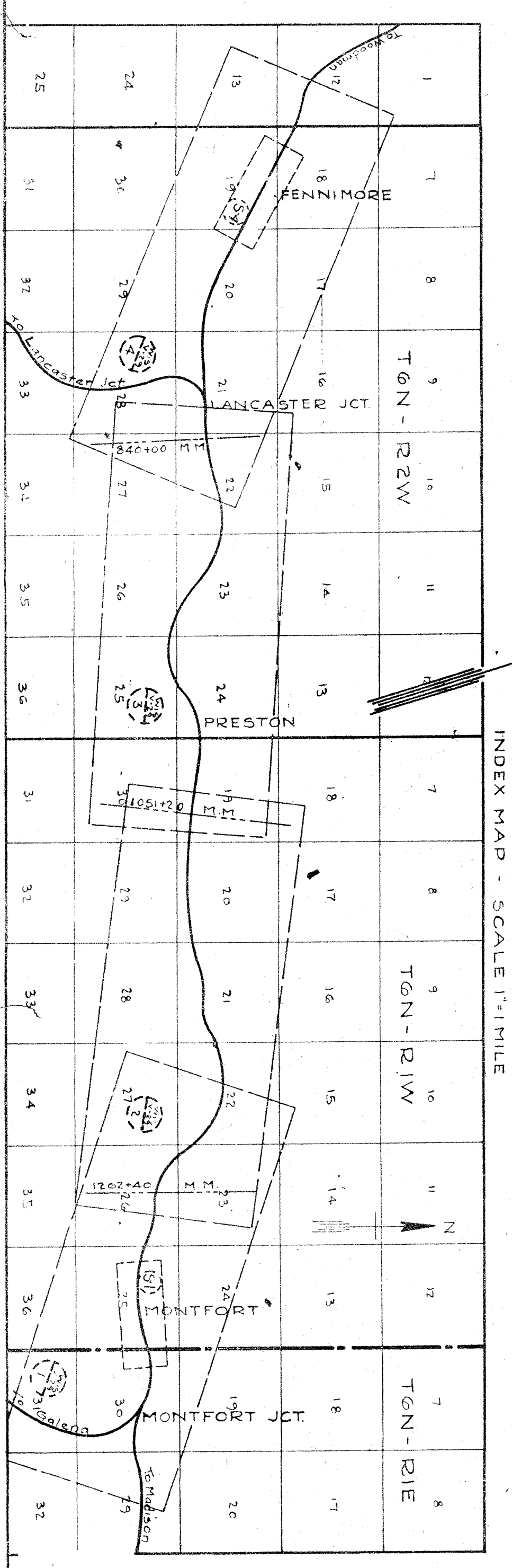
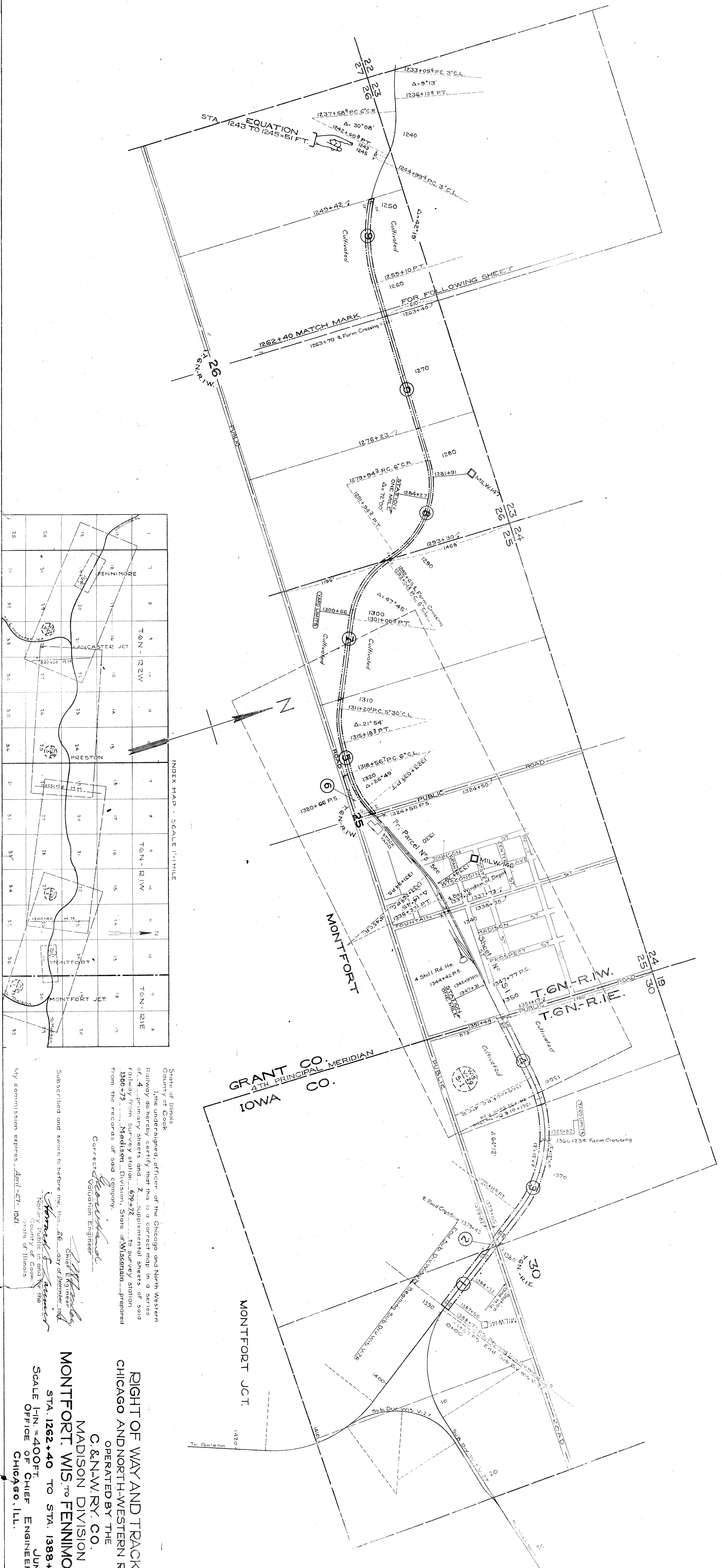


PLATTED - B. E. N. DE. 1916.  
 CHANNING NOTES - F.W.C. DEC. 26, 1916.  
 TRACED - C. J. JAN. 15, 1917.  
 CHECKED - B. E. N. JAN. 18, 1917.



NO.	SECTION	DATE	RECORD	DATE	SCALE
1	Richard Carleton	March 1, 1860	Ch. R. R.	Sept. 1, 1860	1:10
2	George F. Kaman	Aug. 13, 1860	Ch. R. R.	Feb. 1, 1878	1:10
3	John Carleton	Aug. 13, 1860	Ch. R. R.	Aug. 7, 1881	1:10
4	John Carleton	Aug. 13, 1860	Ch. R. R.	Aug. 7, 1881	1:10
5	D. H. Williams	Aug. 13, 1860	Ch. R. R.	Aug. 7, 1881	1:10
6	John Stevens	Aug. 13, 1860	Ch. R. R.	Aug. 7, 1881	1:10
7	John Stevens	Aug. 13, 1860	Ch. R. R.	Aug. 7, 1881	1:10
8	John Stevens	Aug. 13, 1860	Ch. R. R.	Aug. 7, 1881	1:10
9	John Stevens	Aug. 13, 1860	Ch. R. R.	Aug. 7, 1881	1:10
10	John Stevens	Aug. 13, 1860	Ch. R. R.	Aug. 7, 1881	1:10

State of Illinois  
 County of Cook

I, the undersigned, officer of the Chicago and North Western Railway do hereby certify that this is a correct map in a series of 4 primary sheets and 2 supplemental sheets of said railway from survey station 679+72 to survey station 1388+75, Madison Division, State of Wisconsin, prepared from the records of said company.

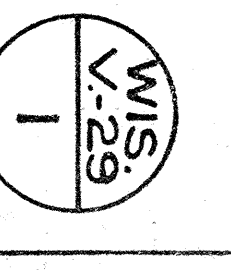
Correct Valuation Engineer  
*W. J. ...*

Subscribed and sworn to before me, this 26 day of December, 1917.  
 Notary Public in and for the County of Cook, State of Illinois  
*W. J. ...*

My commission expires April - 27 - 1921.

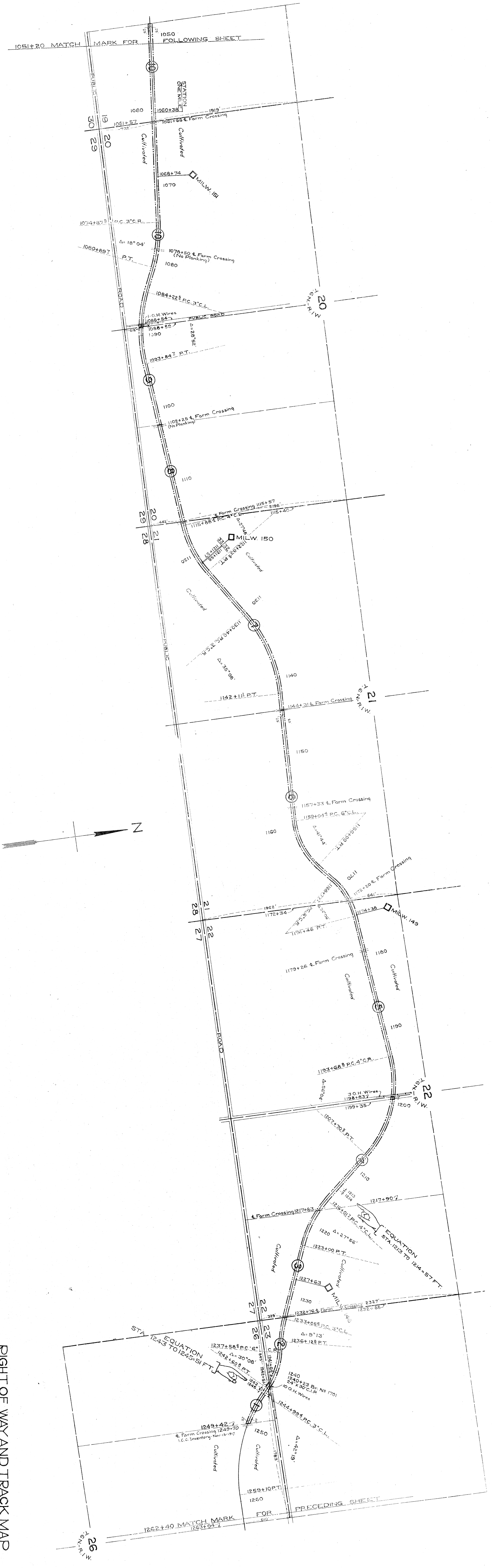
**RIGHT OF WAY AND TRACK MAP  
 MADISON DIVISION  
 MONTFORT, WIS. TO FENNIMORE, WIS  
 CHICAGO AND NORTH-WESTERN RAILWAY  
 OPERATED BY THE  
 C. & N. W. RY. CO.**

SCALE 1"=400 FT.  
 STA. 1262+40 TO STA. 1388+75  
 JUNE 30, 1917.  
 OFFICE OF CHIEF ENGINEER  
 CHICAGO, ILL.



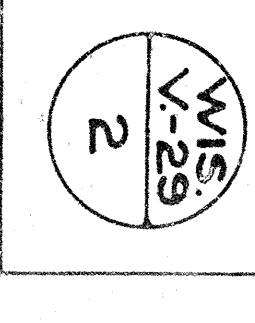


PLATTED - B. & N. - DEC. 1916  
 CHANGING NOTES - F.V.C. - DEC. 29, 1916  
 TRACED - O.T.L. - JAN. 16, 1917  
 RECORDED - B.S.N. - JAN. 15, 1917

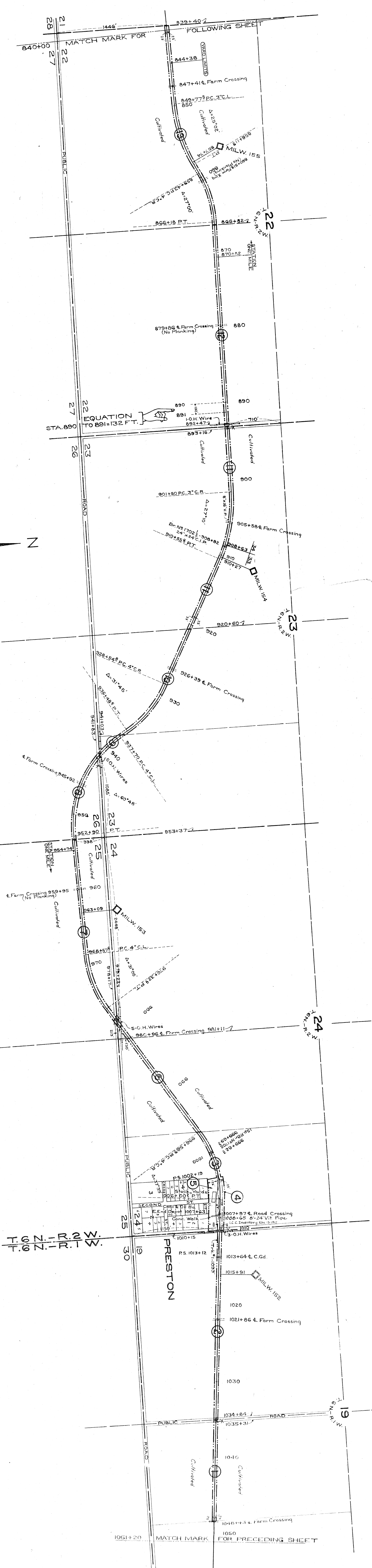


NO.	DATE	BY	REVISION
1	10/20/16	J. H. G.	Original
2	11/15/16	J. H. G.	Revised
3	12/15/16	J. H. G.	Revised
4	1/15/17	J. H. G.	Revised
5	2/15/17	J. H. G.	Revised
6	3/15/17	J. H. G.	Revised
7	4/15/17	J. H. G.	Revised
8	5/15/17	J. H. G.	Revised
9	6/15/17	J. H. G.	Revised
10	7/15/17	J. H. G.	Revised

RIGHT OF WAY AND TRACK MAP  
 CHICAGO AND NORTH-WESTERN RAILWAY  
 OPERATED BY THE  
 C. & N. W. RY. CO.  
 MADISON DIVISION  
 MONTFORT, WIS. TO FENNIMORE, WIS.  
 STA. 1051+20 TO STA. 1262+40  
 SCALE 1/4" = 400 FT.  
 OFFICE OF CHIEF ENGINEER  
 CHICAGO, ILL.  
 JUNE 30, 1917







NO.	SECTION	DATE	BY	REVISION
1	Edward Henschel	June 21, 1917	91	See Dec. 1, 1910
2	J. D. Sullivan, et al.	Jan. 2, 1912	91	See Dec. 1, 1910
3	John W. Peterson	Jan. 2, 1912	91	See Dec. 1, 1910
4	John W. Peterson	Jan. 2, 1912	91	See Dec. 1, 1910
5	John W. Peterson	Jan. 2, 1912	91	See Dec. 1, 1910
6	John W. Peterson	Jan. 2, 1912	91	See Dec. 1, 1910
7	John W. Peterson	Jan. 2, 1912	91	See Dec. 1, 1910
8	John W. Peterson	Jan. 2, 1912	91	See Dec. 1, 1910
9	John W. Peterson	Jan. 2, 1912	91	See Dec. 1, 1910
10	John W. Peterson	Jan. 2, 1912	91	See Dec. 1, 1910
11	John W. Peterson	Jan. 2, 1912	91	See Dec. 1, 1910
12	John W. Peterson	Jan. 2, 1912	91	See Dec. 1, 1910
13	John W. Peterson	Jan. 2, 1912	91	See Dec. 1, 1910
14	John W. Peterson	Jan. 2, 1912	91	See Dec. 1, 1910

RIGHT OF WAY AND TRACK MAP  
 CHICAGO AND NORTH-WESTERN RAILWAY  
 OPERATED BY THE  
 C. & N. W. RY. CO.  
 MADISON DIVISION  
 MONTFORT WIS. TO FENNIMORE, WIS.  
 STA. 840+00 TO STA. 1051+20  
 SCALE 1-IN. = 400 FT.  
 OFFICE OF CHIEF ENGINEER  
 CHICAGO, ILL.

PLATTED - B. N. N. - DEC. 1916  
 DRAWING NOTES - F. W. C. - DEC. 29, 1916  
 CHECKED - B. N. N. - JAN. 18, 1917

