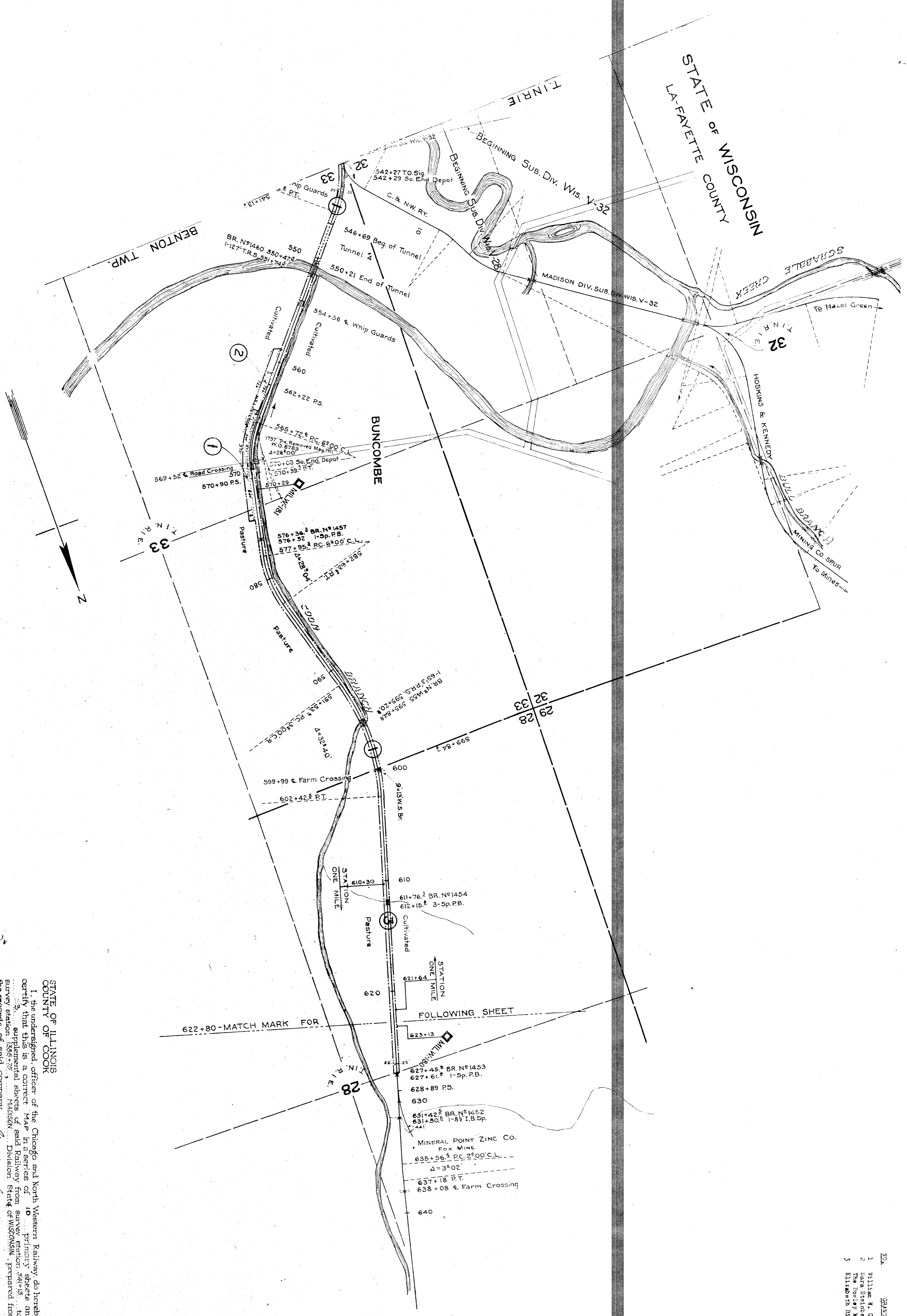


STATE OF WISCONSIN  
LA-FAYETTE COUNTY



NO.	GRANTOR	GRANTEE	INSTRUMENT	DATE	BOOK	PAGE	RECORDED	INDEXED
1	William K. Ollert	Chgo. & N.W. Ry. Co.	K. D.	July 16, 1887	28	285	July 22, 1887	
2	North Star Mining Co.	Chgo. & N.W. Ry. Co.	C. D.	July 22, 1887	28	285	Aug. 2, 1907	
3	The Fox & Mining Co.	Chgo. & N.W. Ry. Co.	C. D.	July 24, 1887	28	285	Aug. 2, 1907	
	Ill. Min. & Mfg. Co.	Chgo. & N.W. Ry. Co.	C. D.	July 21, 1887	28	285	Aug. 2, 1907	

STATE OF ILLINOIS  
COUNTY OF COOK

I, the undersigned, officer of the Chicago and North Western Railway do hereby certify that this is a correct and true copy of the original plan and map as shown to me by the said Illinois State of Wisconsin, prepared from the records of said company.

Correct Valuation Engineer: *W. J. ...*  
 Chief Engineer: *W. J. ...*

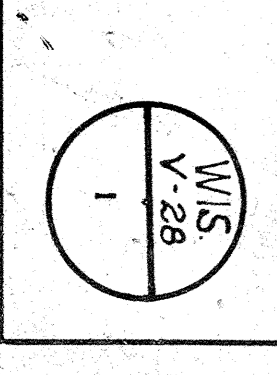
Subscribed and sworn before me this 7th day of Jan., 1918.

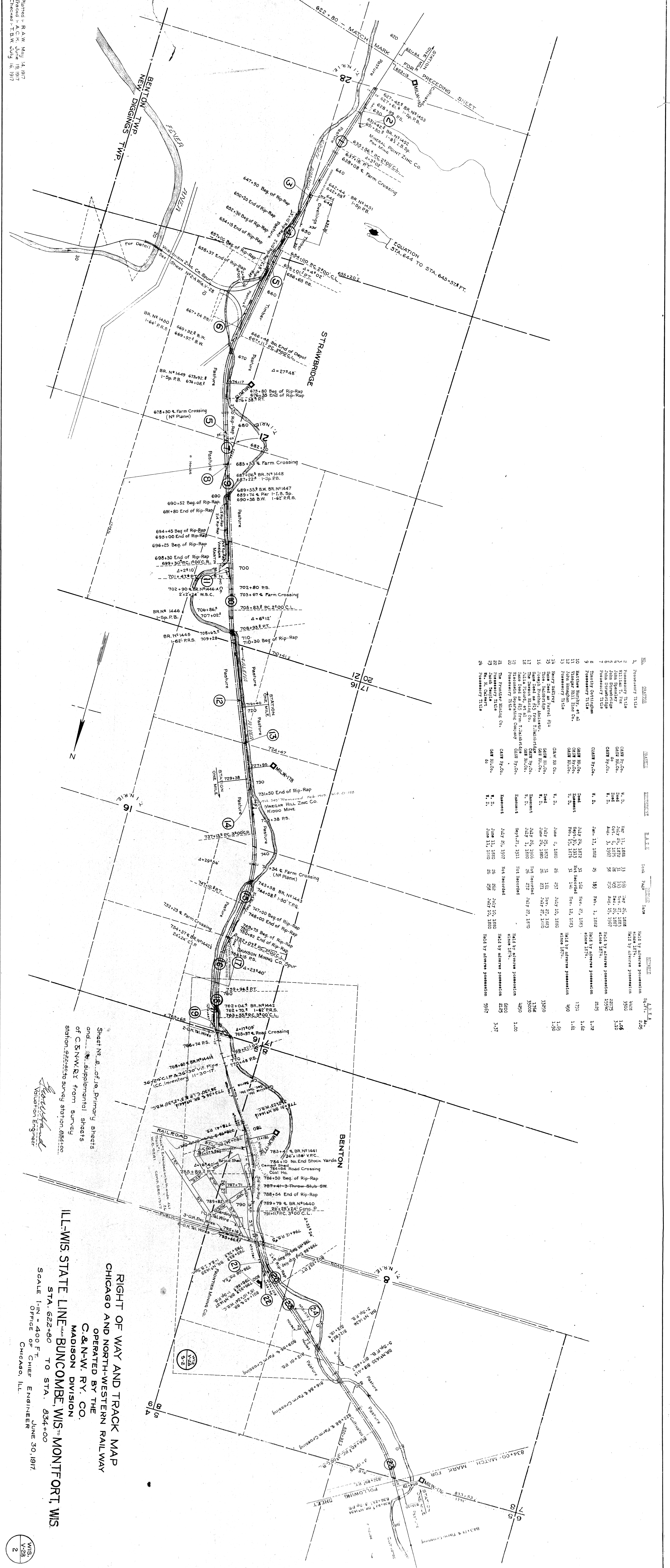
*Notary Public in and for the County of Cook, State of Illinois*

My commission expires April, 27th, 1921.

RIGHT OF WAY AND TRACK MAP  
CHICAGO AND NORTH-WESTERN RAILWAY  
OPERATED BY THE  
C. & N-W. RY. CO.  
MADISON DIVISION  
ILL-WIS. STATE LINE AT BUNCOMBE, WIS. TO MONTFORT, WIS.

STA. 541+13 TO STA. 622+80  
SCALE 1-IN = 400 FT.  
OFFICE OF CHIEF ENGINEER  
JUNE 30, 1917.  
CHICAGO, ILL.





NO.	OWNER	ACQUISITION	B.A.M.	BOOK	PAGE	DATE	REMARKS	A.C.F.A.
1	Passerby Title						Held by adverse possession since 1871.	205
2	Passerby Title						Held by adverse possession since 1871.	1.06
3	Passerby Title						Held by adverse possession since 1871.	1.10
4	Passerby Title						Held by adverse possession since 1871.	1.12
5	Passerby Title						Held by adverse possession since 1871.	1.50
6	Passerby Title						Held by adverse possession since 1871.	1.50
7	Passerby Title						Held by adverse possession since 1871.	1.50
8	Passerby Title						Held by adverse possession since 1871.	1.50
9	Passerby Title						Held by adverse possession since 1871.	1.50
10	Passerby Title						Held by adverse possession since 1871.	1.50
11	Passerby Title						Held by adverse possession since 1871.	1.50
12	Passerby Title						Held by adverse possession since 1871.	1.50
13	Passerby Title						Held by adverse possession since 1871.	1.50
14	Passerby Title						Held by adverse possession since 1871.	1.50
15	Passerby Title						Held by adverse possession since 1871.	1.50
16	Passerby Title						Held by adverse possession since 1871.	1.50
17	Passerby Title						Held by adverse possession since 1871.	1.50
18	Passerby Title						Held by adverse possession since 1871.	1.50
19	Passerby Title						Held by adverse possession since 1871.	1.50
20	Passerby Title						Held by adverse possession since 1871.	1.50
21	Passerby Title						Held by adverse possession since 1871.	1.50
22	Passerby Title						Held by adverse possession since 1871.	1.50
23	Passerby Title						Held by adverse possession since 1871.	1.50
24	Passerby Title						Held by adverse possession since 1871.	1.50

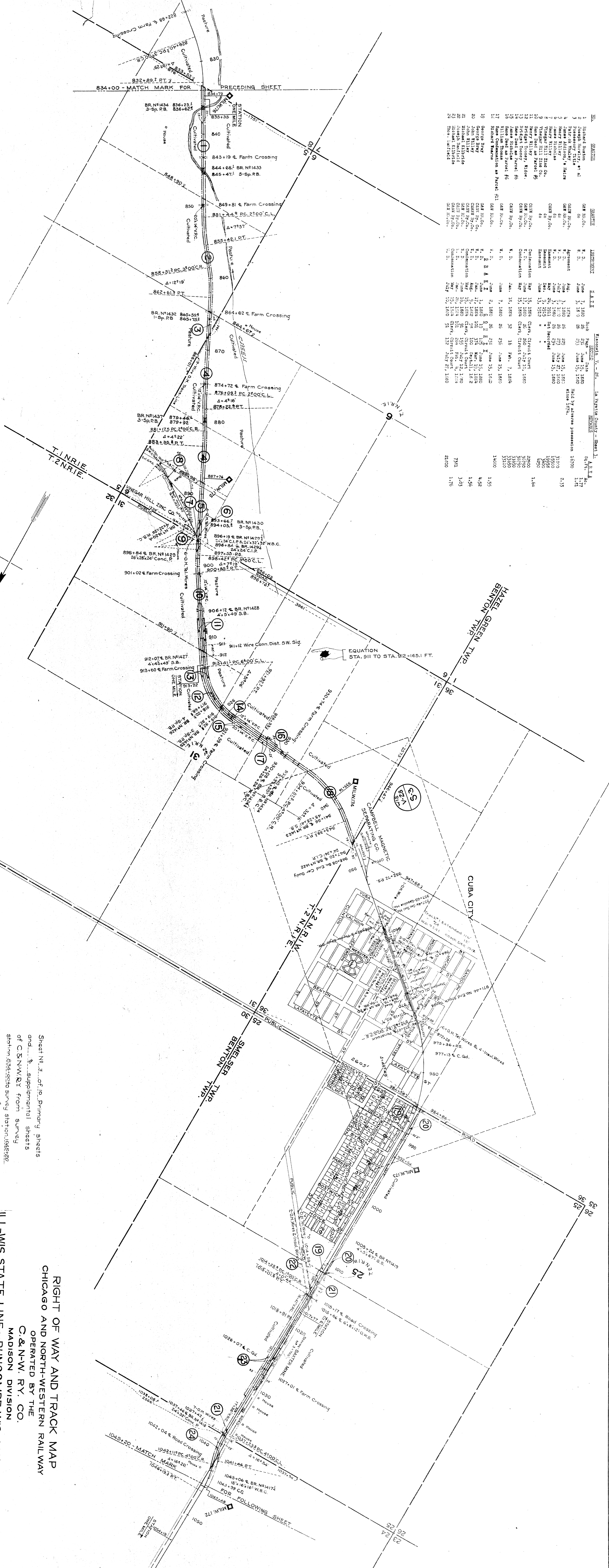
Sheet No. 2 of 10. Primary sheets and supplemental sheets of C. & N.W. Ry. from survey station 622+80 to survey station 834+00.

**RIGHT OF WAY AND TRACK MAP**  
**CHICAGO AND NORTH-WESTERN RAILWAY**  
 OPERATED BY THE  
**C. & N.W. RY. CO.**  
 MADISON DIVISION  
**ILL-WIS STATE LINE**  
 FROM BUNCOMBE, WIS. TO MONTFORT, WIS.  
 STA. 622+80 TO STA. 834+00  
 SCALE 1-IN. = 400 FT.  
 OFFICE OF CHIEF ENGINEER  
 CHICAGO, ILL.  
 JUNE 30, 1917.

Plotted - R. A. W. May 14, 1917  
 Checked - T. B. W. July 16, 1917

WIS. V-28 2

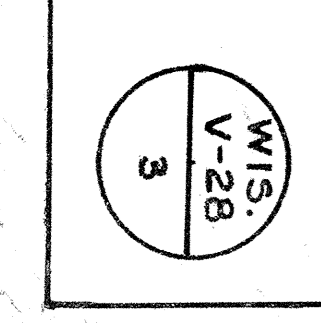
NO.	GRANTEE	DATE	BOOK	PAGE	DATE	REMARKS	A.R.E.A.
1	Richard Hutton	June 7, 1880	86	23	June 15, 1880		1.77
2	Joseph Hutton, et al	June 7, 1880	86	23	June 15, 1880		1.77
3	Richard Hutton	June 7, 1880	86	23	June 15, 1880		1.77
4	James Allison, et al	June 7, 1880	86	23	June 15, 1880		1.77
5	Henry Kelley	June 7, 1880	86	23	June 15, 1880		1.77
6	Henry Kelley	June 7, 1880	86	23	June 15, 1880		1.77
7	Henry Kelley	June 7, 1880	86	23	June 15, 1880		1.77
8	Vinegar Hill Zinc Co.	June 13, 1912					1.64
9	Vinegar Hill Zinc Co.	June 13, 1912					1.64
10	Vinegar Hill Zinc Co.	June 13, 1912					1.64
11	Henry Kelley	June 7, 1880	86	23	June 15, 1880		1.77
12	Henry Kelley	June 7, 1880	86	23	June 15, 1880		1.77
13	James Nicholas	June 7, 1880	86	23	June 15, 1880		1.77
14	James Nicholas	June 7, 1880	86	23	June 15, 1880		1.77
15	James Nicholas	June 7, 1880	86	23	June 15, 1880		1.77
16	Richard Warner	June 7, 1880	86	23	June 15, 1880		1.77
17	Richard Warner	June 7, 1880	86	23	June 15, 1880		1.77
18	Richard Warner	June 7, 1880	86	23	June 15, 1880		1.77
19	George Bray	June 7, 1880	86	23	June 15, 1880		1.77
20	George Bray	June 7, 1880	86	23	June 15, 1880		1.77
21	John Kelley	June 7, 1880	86	23	June 15, 1880		1.77
22	John Kelley	June 7, 1880	86	23	June 15, 1880		1.77
23	John Kelley	June 7, 1880	86	23	June 15, 1880		1.77
24	Joseph Burfield	June 7, 1880	86	23	June 15, 1880		1.77
25	Joseph Burfield	June 7, 1880	86	23	June 15, 1880		1.77
26	Joseph Burfield	June 7, 1880	86	23	June 15, 1880		1.77



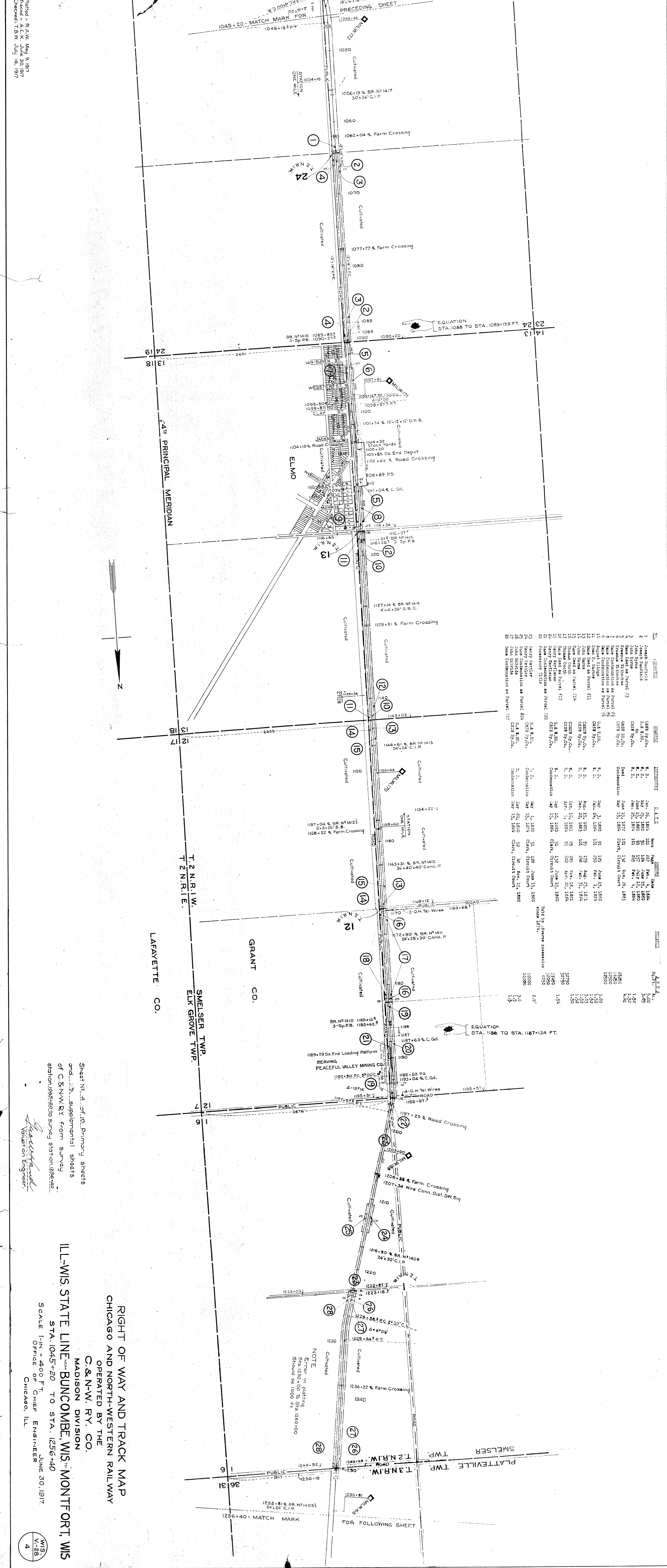
Plotted - R.A.W. May 11, 1917  
 Traced - A.C.K. June 27, 1917  
 Checked - T.B.W. July 16, 1917

Sheet No. 3 of 10. Primary sheets  
 and supplemental sheets  
 of C.&N.W.R. from survey  
 station 834+00 to survey station 1045+20

RIGHT OF WAY AND TRACK MAP  
 CHICAGO AND NORTH-WESTERN RAILWAY  
 OPERATED BY THE  
 C.&N.W. RY. CO.  
 MADISON DIVISION  
 BUNCOMBE, WIS. TO MONTFORT, WIS  
 STA. 834+00 TO STA. 1045+20  
 SCALE 1-IN = 400 FT.  
 OFFICE OF CHIEF ENGINEER  
 CHICAGO, ILL. JUNE 30, 1917.



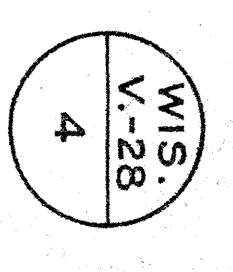
Printed by R.A.W. May 9, 1917  
 Traced by A.C.K. June 30, 1917  
 Checked by T.B.W. July 16, 1917



NO.	SECTION	OWNER	ACQUISITION	D.A.T.E.	BOOK	PAGE	RECORD	DATE	REMARKS	S.F.	A.C.
1	1	Joseph Burfield	C.A.R. Ry. Co.	Jan. 26, 1884	121	257	June 15, 1884	10000		3.05	
2	2	Joseph Burfield	O.A. W.M.	May 15, 1880	91	124	June 15, 1880	10000		1.52	
3	3	John Perry	C.A.R. Ry. Co.	Jan. 26, 1884	101	255	Feb. 1, 1884	10000		1.52	
4	4	Same land as Parcel 3	C.A.R. Ry. Co.	May 15, 1880	101	112	Nov. 26, 1883	10000		1.52	
5	5	Francis E. Clarke	C.A.R. Ry. Co.	May 15, 1880	101	112	Nov. 26, 1883	10000		1.52	
6	6	Same land as Parcel 5	C.A.R. Ry. Co.	May 15, 1880	101	112	Nov. 26, 1883	10000		1.52	
7	7	Same land as Parcel 5	C.A.R. Ry. Co.	May 15, 1880	101	112	Nov. 26, 1883	10000		1.52	
8	8	Same land as Parcel 5	C.A.R. Ry. Co.	May 15, 1880	101	112	Nov. 26, 1883	10000		1.52	
9	9	Same land as Parcel 5	C.A.R. Ry. Co.	May 15, 1880	101	112	Nov. 26, 1883	10000		1.52	
10	10	Same land as Parcel 5	C.A.R. Ry. Co.	May 15, 1880	101	112	Nov. 26, 1883	10000		1.52	
11	11	Same land as Parcel 5	C.A.R. Ry. Co.	May 15, 1880	101	112	Nov. 26, 1883	10000		1.52	
12	12	Same land as Parcel 5	C.A.R. Ry. Co.	May 15, 1880	101	112	Nov. 26, 1883	10000		1.52	
13	13	Same land as Parcel 5	C.A.R. Ry. Co.	May 15, 1880	101	112	Nov. 26, 1883	10000		1.52	
14	14	Same land as Parcel 5	C.A.R. Ry. Co.	May 15, 1880	101	112	Nov. 26, 1883	10000		1.52	
15	15	Same land as Parcel 5	C.A.R. Ry. Co.	May 15, 1880	101	112	Nov. 26, 1883	10000		1.52	
16	16	Same land as Parcel 5	C.A.R. Ry. Co.	May 15, 1880	101	112	Nov. 26, 1883	10000		1.52	
17	17	Same land as Parcel 5	C.A.R. Ry. Co.	May 15, 1880	101	112	Nov. 26, 1883	10000		1.52	
18	18	Same land as Parcel 5	C.A.R. Ry. Co.	May 15, 1880	101	112	Nov. 26, 1883	10000		1.52	
19	19	Same land as Parcel 5	C.A.R. Ry. Co.	May 15, 1880	101	112	Nov. 26, 1883	10000		1.52	
20	20	Same land as Parcel 5	C.A.R. Ry. Co.	May 15, 1880	101	112	Nov. 26, 1883	10000		1.52	
21	21	Same land as Parcel 5	C.A.R. Ry. Co.	May 15, 1880	101	112	Nov. 26, 1883	10000		1.52	
22	22	Same land as Parcel 5	C.A.R. Ry. Co.	May 15, 1880	101	112	Nov. 26, 1883	10000		1.52	
23	23	Same land as Parcel 5	C.A.R. Ry. Co.	May 15, 1880	101	112	Nov. 26, 1883	10000		1.52	
24	24	Same land as Parcel 5	C.A.R. Ry. Co.	May 15, 1880	101	112	Nov. 26, 1883	10000		1.52	
25	25	Same land as Parcel 5	C.A.R. Ry. Co.	May 15, 1880	101	112	Nov. 26, 1883	10000		1.52	
26	26	Same land as Parcel 5	C.A.R. Ry. Co.	May 15, 1880	101	112	Nov. 26, 1883	10000		1.52	
27	27	Same land as Parcel 5	C.A.R. Ry. Co.	May 15, 1880	101	112	Nov. 26, 1883	10000		1.52	
28	28	Same land as Parcel 5	C.A.R. Ry. Co.	May 15, 1880	101	112	Nov. 26, 1883	10000		1.52	
29	29	Same land as Parcel 5	C.A.R. Ry. Co.	May 15, 1880	101	112	Nov. 26, 1883	10000		1.52	

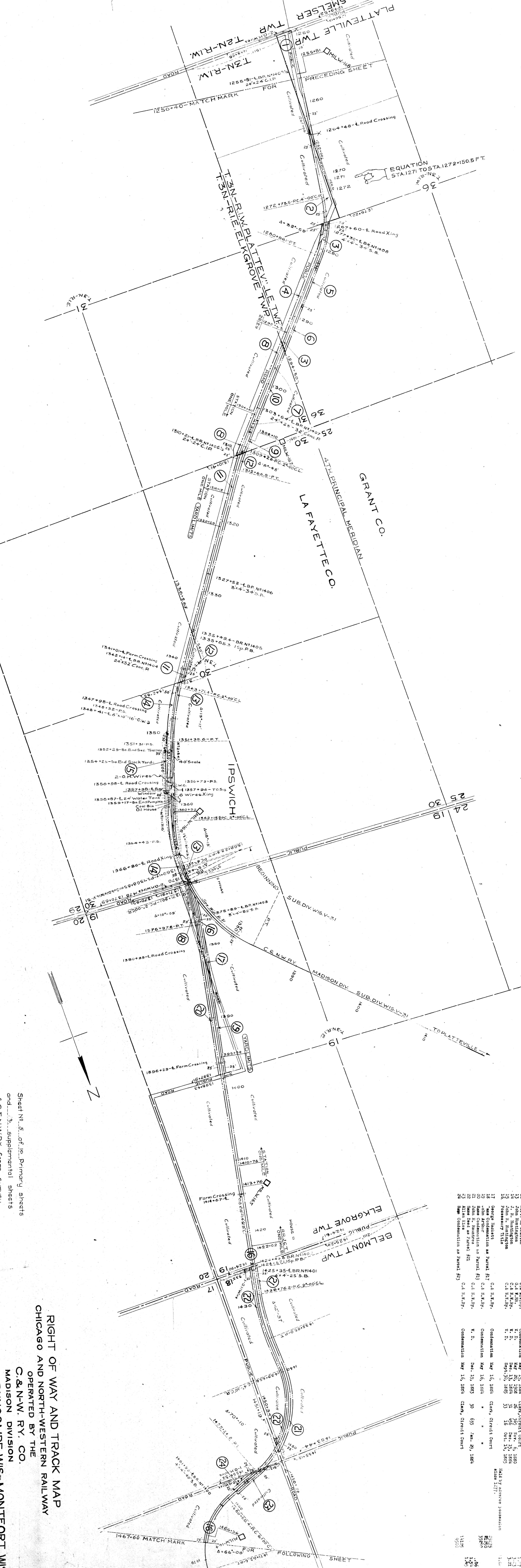
Sheet No. 4 of 10. Primary sheets  
 and supplemental sheets  
 of C&N.W.R.Y. from survey  
 station 1045+20 to survey station 1256+40.

RIGHT OF WAY AND TRACK MAP  
 CHICAGO AND NORTH-WESTERN RAILWAY  
 OPERATED BY THE  
 C.&N.W. RY. CO.  
 MADISON DIVISION  
 ILL.-WIS STATE LINE - BUNCOMBE, WIS. TO MONTFORT, WIS  
 STA. 1045+20 TO STA. 1256+40  
 SCALE 1-IN = 400 FT.  
 OFFICE OF CHIEF ENGINEER  
 JUNE 30, 1917  
 CHICAGO, ILL.



PLATTED - MAY - APRIL 1917  
 DRAWING NOTES  
 TRACED - APR - MAY 25, 1917  
 RECORDED - JAN - JUNE 1919

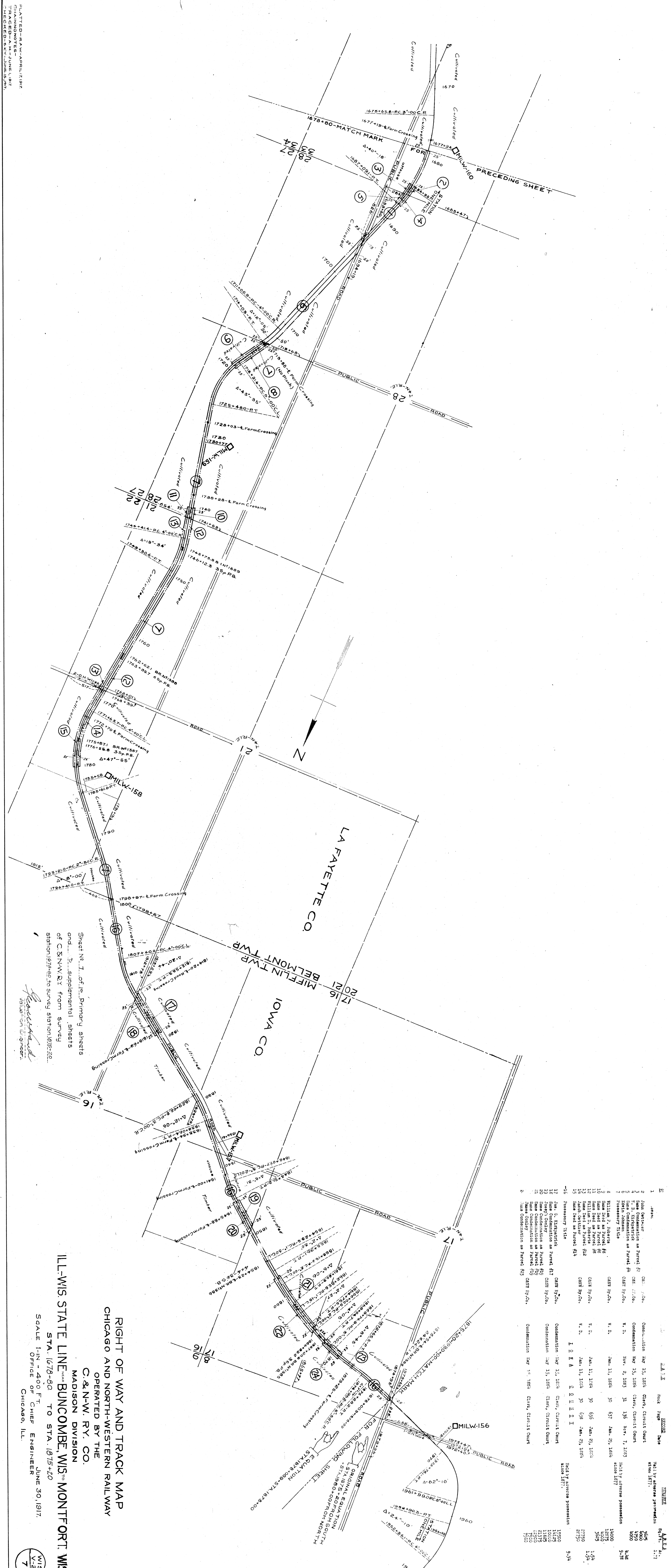
RIGHT OF WAY AND TRACK MAP  
 CHICAGO AND NORTH-WESTERN RAILWAY  
 OPERATED BY THE  
 C. & N-W. RY. CO.  
 MADISON DIVISION  
 ILL-WIS. STATE LINE near BUNCOMBE, WIS TO MONTFORT, WIS.  
 STA. 1256+40 TO STA. 1407+60  
 SCALE 1"=1/4" = 400 FT.  
 OFFICE OF CHIEF ENGINEER  
 CHICAGO, ILL.  
 JUNE 30, 1917.



NO.	SECTION	OWNER	RECORD	DATE	BOOK	PAGE	REMARKS
1	George Hatfield	C. & N.W. Ry.	R. D.	July 5, 1873	101	102	Use as Highway.
2	Robt. De Bide	C. & N.W. Ry.	R. D.	Aug 15, 1881	95	117	Use as Highway.
3	Thomas Robinson	C. & N.W. Ry.	R. D.	Aug 15, 1881	95	117	Use as Highway.
4	Thomas Robinson	C. & N.W. Ry.	R. D.	Jan 30, 1884	101	51	Use as Highway.
5	Thomas Robinson	C. & N.W. Ry.	R. D.	Jan 30, 1884	101	51	Use as Highway.
6	Thomas Robinson	C. & N.W. Ry.	R. D.	Jan 30, 1884	101	51	Use as Highway.
7	Thomas Robinson	C. & N.W. Ry.	R. D.	Jan 30, 1884	101	51	Use as Highway.
8	Thomas Robinson	C. & N.W. Ry.	R. D.	Jan 30, 1884	101	51	Use as Highway.
9	Thomas Robinson	C. & N.W. Ry.	R. D.	Jan 30, 1884	101	51	Use as Highway.
10	Thomas Robinson	C. & N.W. Ry.	R. D.	Jan 30, 1884	101	51	Use as Highway.
11	Thomas Robinson	C. & N.W. Ry.	R. D.	Jan 30, 1884	101	51	Use as Highway.
12	Thomas Robinson	C. & N.W. Ry.	R. D.	Jan 30, 1884	101	51	Use as Highway.
13	Thomas Robinson	C. & N.W. Ry.	R. D.	Jan 30, 1884	101	51	Use as Highway.
14	Thomas Robinson	C. & N.W. Ry.	R. D.	Jan 30, 1884	101	51	Use as Highway.
15	Thomas Robinson	C. & N.W. Ry.	R. D.	Jan 30, 1884	101	51	Use as Highway.
16	Thomas Robinson	C. & N.W. Ry.	R. D.	Jan 30, 1884	101	51	Use as Highway.
17	Thomas Robinson	C. & N.W. Ry.	R. D.	Jan 30, 1884	101	51	Use as Highway.
18	Thomas Robinson	C. & N.W. Ry.	R. D.	Jan 30, 1884	101	51	Use as Highway.
19	Thomas Robinson	C. & N.W. Ry.	R. D.	Jan 30, 1884	101	51	Use as Highway.
20	Thomas Robinson	C. & N.W. Ry.	R. D.	Jan 30, 1884	101	51	Use as Highway.
21	Thomas Robinson	C. & N.W. Ry.	R. D.	Jan 30, 1884	101	51	Use as Highway.
22	Thomas Robinson	C. & N.W. Ry.	R. D.	Jan 30, 1884	101	51	Use as Highway.
23	Thomas Robinson	C. & N.W. Ry.	R. D.	Jan 30, 1884	101	51	Use as Highway.
24	Thomas Robinson	C. & N.W. Ry.	R. D.	Jan 30, 1884	101	51	Use as Highway.
25	Thomas Robinson	C. & N.W. Ry.	R. D.	Jan 30, 1884	101	51	Use as Highway.
26	Thomas Robinson	C. & N.W. Ry.	R. D.	Jan 30, 1884	101	51	Use as Highway.
27	Thomas Robinson	C. & N.W. Ry.	R. D.	Jan 30, 1884	101	51	Use as Highway.
28	Thomas Robinson	C. & N.W. Ry.	R. D.	Jan 30, 1884	101	51	Use as Highway.
29	Thomas Robinson	C. & N.W. Ry.	R. D.	Jan 30, 1884	101	51	Use as Highway.
30	Thomas Robinson	C. & N.W. Ry.	R. D.	Jan 30, 1884	101	51	Use as Highway.

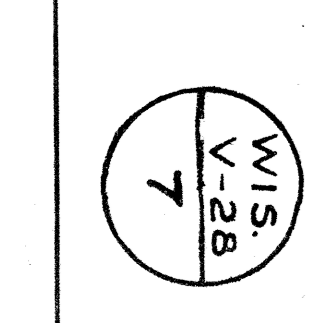


PLATTED - 8 A W - APRIL 17, 1917  
 CHAINING NOTES -  
 TRACED - A. H. - JUNE 1, 1917  
 CHECKED - E. K. - JUNE 15, 1917

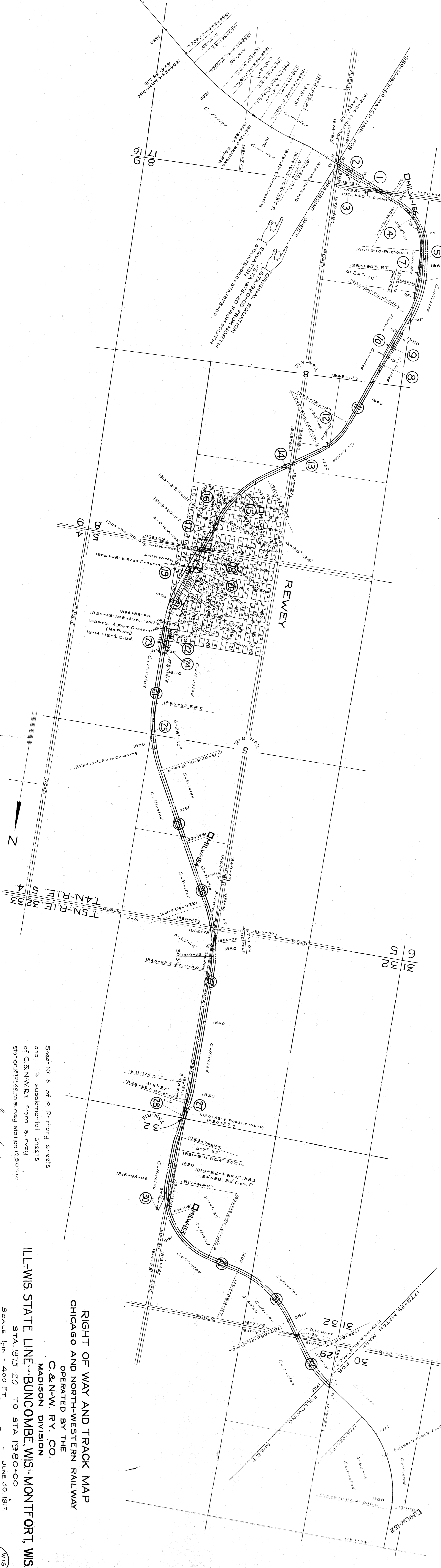


NO.	NAME	DATE	CLASS	STATUS	REMARKS
1	John Decker	May 15, 1854	Chas. Circuit Court	Condemnation	May 15, 1854
2	John Decker	May 15, 1854	Chas. Circuit Court	Condemnation	May 15, 1854
3	John Decker	May 15, 1854	Chas. Circuit Court	Condemnation	May 15, 1854
4	John Decker	May 15, 1854	Chas. Circuit Court	Condemnation	May 15, 1854
5	John Decker	May 15, 1854	Chas. Circuit Court	Condemnation	May 15, 1854
6	John Decker	May 15, 1854	Chas. Circuit Court	Condemnation	May 15, 1854
7	John Decker	May 15, 1854	Chas. Circuit Court	Condemnation	May 15, 1854
8	John Decker	May 15, 1854	Chas. Circuit Court	Condemnation	May 15, 1854
9	John Decker	May 15, 1854	Chas. Circuit Court	Condemnation	May 15, 1854
10	John Decker	May 15, 1854	Chas. Circuit Court	Condemnation	May 15, 1854
11	John Decker	May 15, 1854	Chas. Circuit Court	Condemnation	May 15, 1854
12	John Decker	May 15, 1854	Chas. Circuit Court	Condemnation	May 15, 1854
13	John Decker	May 15, 1854	Chas. Circuit Court	Condemnation	May 15, 1854
14	John Decker	May 15, 1854	Chas. Circuit Court	Condemnation	May 15, 1854
15	John Decker	May 15, 1854	Chas. Circuit Court	Condemnation	May 15, 1854
16	John Decker	May 15, 1854	Chas. Circuit Court	Condemnation	May 15, 1854
17	John Decker	May 15, 1854	Chas. Circuit Court	Condemnation	May 15, 1854
18	John Decker	May 15, 1854	Chas. Circuit Court	Condemnation	May 15, 1854
19	John Decker	May 15, 1854	Chas. Circuit Court	Condemnation	May 15, 1854
20	John Decker	May 15, 1854	Chas. Circuit Court	Condemnation	May 15, 1854
21	John Decker	May 15, 1854	Chas. Circuit Court	Condemnation	May 15, 1854
22	John Decker	May 15, 1854	Chas. Circuit Court	Condemnation	May 15, 1854
23	John Decker	May 15, 1854	Chas. Circuit Court	Condemnation	May 15, 1854
24	John Decker	May 15, 1854	Chas. Circuit Court	Condemnation	May 15, 1854
25	John Decker	May 15, 1854	Chas. Circuit Court	Condemnation	May 15, 1854
26	John Decker	May 15, 1854	Chas. Circuit Court	Condemnation	May 15, 1854
27	John Decker	May 15, 1854	Chas. Circuit Court	Condemnation	May 15, 1854
28	John Decker	May 15, 1854	Chas. Circuit Court	Condemnation	May 15, 1854
29	John Decker	May 15, 1854	Chas. Circuit Court	Condemnation	May 15, 1854
30	John Decker	May 15, 1854	Chas. Circuit Court	Condemnation	May 15, 1854

RIGHT OF WAY AND TRACK MAP  
 CHICAGO AND NORTH-WESTERN RAILWAY  
 OPERATED BY THE  
 C. & N-W. RY. CO.  
 MADISON DIVISION  
 ILL-WIS STATE LINE FROM BUNCOMBE, WIS. TO MONTFORT, WIS.  
 STA. 1670+80 TO STA. 1875+20  
 SCALE 1" = 400 FT.  
 OFFICE OF CHIEF ENGINEER  
 CHICAGO, ILL.  
 JUNE 30, 1917



PLATTED-B.A.W.-APRIL, 1917  
 CHAINING NOTES-  
 TRACED-A.M.-JUNE 4, 1917  
 CHECKED-S.K.-JUNE 15, 1917

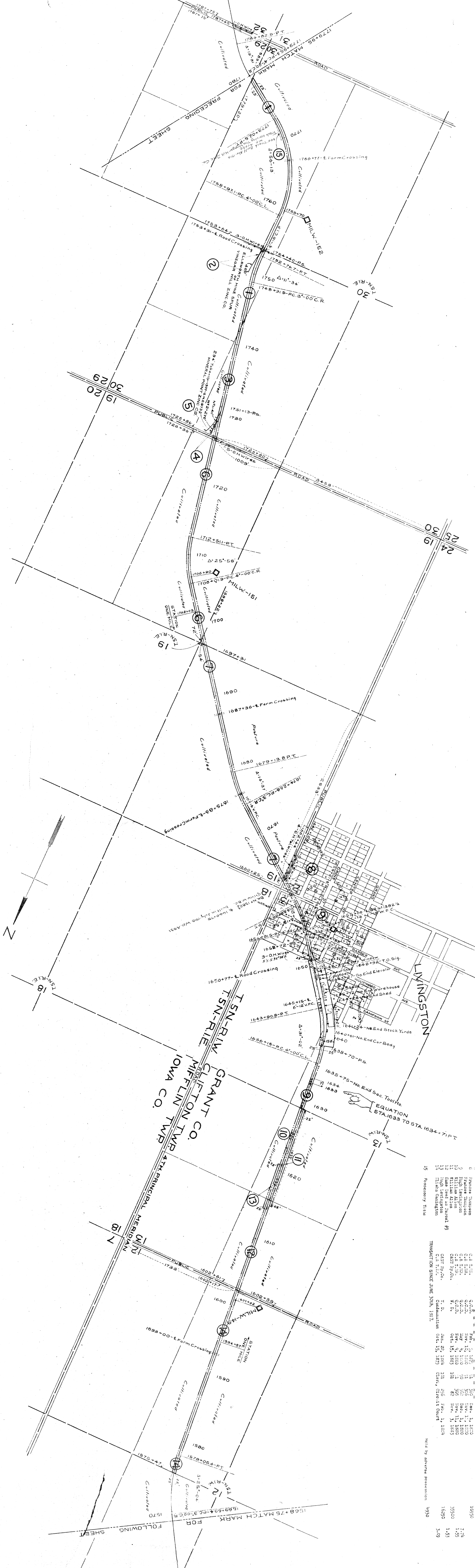


NO.	OWNER	ACQUISITION	DATE	RECORD	REMARKS
1	Martin McDonald	C.A. T.R.M. Co.	Oct. 15, 1879	Book, Patent	13500
2	"	C.A. T.R.M. Co.	May 15, 1884	Clerk, Circuit Court	13510
3	Same	C.A. T.R.M. Co.	Oct. 15, 1879	"	13515
4	Same	C.A. T.R.M. Co.	Oct. 15, 1879	"	13520
5	William B. Blandridge	C.A. T.R.M. Co.	Oct. 15, 1879	"	13525
6	Same	C.A. T.R.M. Co.	Oct. 15, 1879	"	13530
7	Same	C.A. T.R.M. Co.	Oct. 15, 1879	"	13535
8	Same	C.A. T.R.M. Co.	Oct. 15, 1879	"	13540
9	Same	C.A. T.R.M. Co.	Oct. 15, 1879	"	13545
10	Same	C.A. T.R.M. Co.	Oct. 15, 1879	"	13550
11	Same	C.A. T.R.M. Co.	Oct. 15, 1879	"	13555
12	Same	C.A. T.R.M. Co.	Oct. 15, 1879	"	13560
13	Same	C.A. T.R.M. Co.	Oct. 15, 1879	"	13565
14	Same	C.A. T.R.M. Co.	Oct. 15, 1879	"	13570
15	Same	C.A. T.R.M. Co.	Oct. 15, 1879	"	13575
16	Same	C.A. T.R.M. Co.	Oct. 15, 1879	"	13580
17	Same	C.A. T.R.M. Co.	Oct. 15, 1879	"	13585
18	Same	C.A. T.R.M. Co.	Oct. 15, 1879	"	13590
19	Same	C.A. T.R.M. Co.	Oct. 15, 1879	"	13595
20	Same	C.A. T.R.M. Co.	Oct. 15, 1879	"	13600
21	Same	C.A. T.R.M. Co.	Oct. 15, 1879	"	13605
22	Same	C.A. T.R.M. Co.	Oct. 15, 1879	"	13610
23	Same	C.A. T.R.M. Co.	Oct. 15, 1879	"	13615
24	Same	C.A. T.R.M. Co.	Oct. 15, 1879	"	13620
25	Same	C.A. T.R.M. Co.	Oct. 15, 1879	"	13625
26	Same	C.A. T.R.M. Co.	Oct. 15, 1879	"	13630
27	Same	C.A. T.R.M. Co.	Oct. 15, 1879	"	13635
28	Same	C.A. T.R.M. Co.	Oct. 15, 1879	"	13640
29	Same	C.A. T.R.M. Co.	Oct. 15, 1879	"	13645
30	Same	C.A. T.R.M. Co.	Oct. 15, 1879	"	13650

RIGHT OF WAY AND TRACK MAP  
 CHICAGO AND NORTH-WESTERN RAILWAY  
 OPERATED BY THE  
 C. & N. W. RY. CO.  
 MADISON DIVISION  
 ILL.-WIS. STATE LINE WITH BUNCOMBE, WIS. TO MONTFORT, WIS.  
 STA. 1875+20 TO STA. 1980+00  
 SCALE 1-IN. = 400 FT.  
 OFFICE OF CHIEF ENGINEER  
 CHICAGO, ILL.  
 JUNE 30, 1917



NO.	DESCRIPTION	DATE	BY	REVISION	DATE	BY	REVISION
1	Original	Jan. 10, 1917	W. S. ...	1	Jan. 10, 1917	W. S. ...	1
2	...	...	...	...	...	...	...
3	...	...	...	...	...	...	...
4	...	...	...	...	...	...	...
5	...	...	...	...	...	...	...
6	...	...	...	...	...	...	...
7	...	...	...	...	...	...	...
8	...	...	...	...	...	...	...
9	...	...	...	...	...	...	...
10	...	...	...	...	...	...	...
11	...	...	...	...	...	...	...
12	...	...	...	...	...	...	...
13	...	...	...	...	...	...	...
14	...	...	...	...	...	...	...
15	...	...	...	...	...	...	...



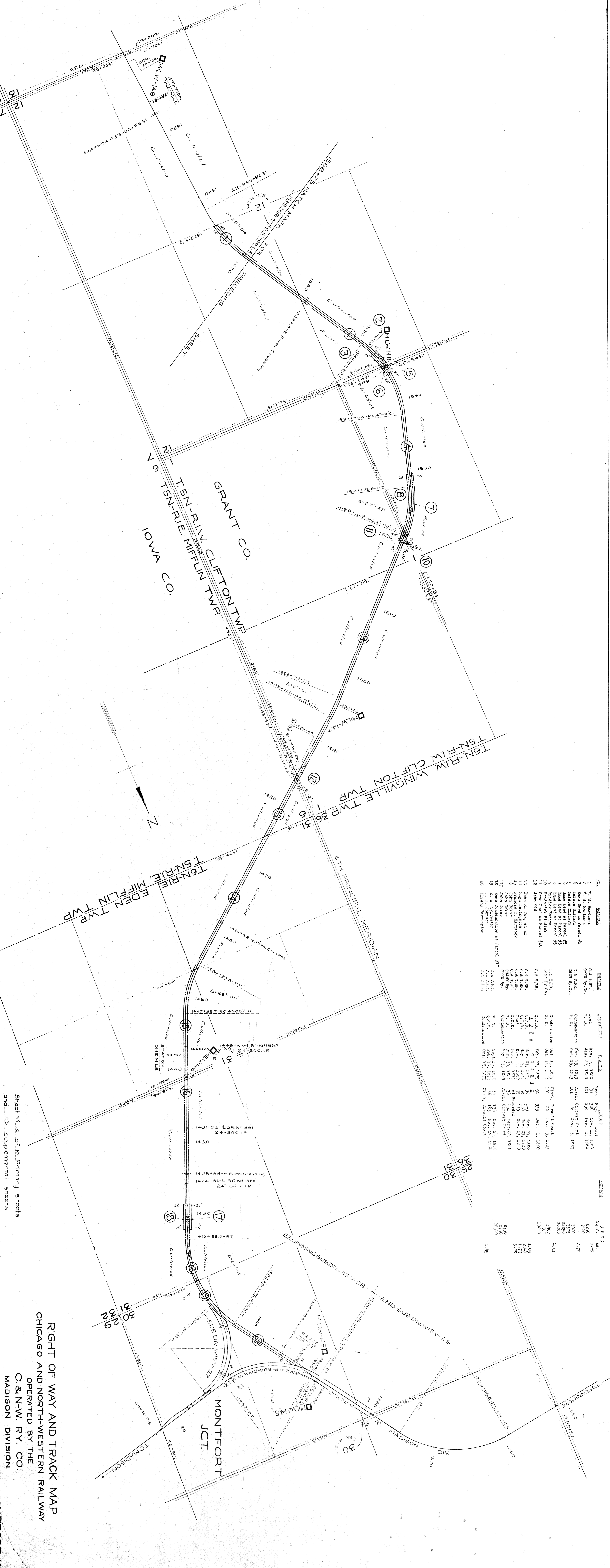
RIGHT OF WAY AND TRACK MAP  
CHICAGO AND NORTH-WESTERN RAILWAY  
OPERATED BY THE  
C. & N.-W. RY. CO.  
MADISON DIVISION

ILL-WIS STATE LINE, BUNCOMBE, WIS TO MONTFORT, WIS  
STA. 1568+75 TO STA. 1779+95  
SCALE 1-IN = 400 FT.  
OFFICE OF CHIEF ENGINEER  
JUNE 30, 1917  
CHICAGO, ILL.

PRINTED AND PUBLISHED BY  
CHICAGO AND NORTH-WESTERN RAILWAY  
TRACED - JUNE 5, 1917 A.M.  
CHECKED - JUNE 5, 1917 A.M.

WIS  
V-28  
9

PLATTED DRAWN APRIL 12, 1917  
 TRACED AND CHECKED JUNE 1917  
 CHECKED - SKY - JUNE 15, 1917



NO.	GRANTEE	QUANTITY	INSTRUMENT	DATE	BOOK	PAGE	ACRES
1	P. H. Hartwick	0.4 T.R.M.	Deed	Nov. 9, 1870	104	110	0.4
2	Same Deed as Parcel #1	0.4 T.R.M.	Deed	Jan. 22, 1874	101	291	1.180
3	Same Deed as Parcel #1	0.4 T.R.M.	Deed	Jan. 22, 1874	101	291	1.180
4	Same Deed as Parcel #1	0.4 T.R.M.	Deed	Jan. 22, 1874	101	291	1.180
5	Same Deed as Parcel #1	0.4 T.R.M.	Deed	Jan. 22, 1874	101	291	1.180
6	Same Deed as Parcel #1	0.4 T.R.M.	Deed	Jan. 22, 1874	101	291	1.180
7	Same Deed as Parcel #1	0.4 T.R.M.	Deed	Jan. 22, 1874	101	291	1.180
8	Same Deed as Parcel #1	0.4 T.R.M.	Deed	Jan. 22, 1874	101	291	1.180
9	Same Deed as Parcel #1	0.4 T.R.M.	Deed	Jan. 22, 1874	101	291	1.180
10	Same Deed as Parcel #1	0.4 T.R.M.	Deed	Jan. 22, 1874	101	291	1.180
11	Same Deed as Parcel #1	0.4 T.R.M.	Deed	Jan. 22, 1874	101	291	1.180
12	Same Deed as Parcel #1	0.4 T.R.M.	Deed	Jan. 22, 1874	101	291	1.180
13	John H. Cox, et al	0.4 T.R.M.	Deed	Oct. 15, 1873	101	291	1.180
14	John H. Cox, et al	0.4 T.R.M.	Deed	Oct. 15, 1873	101	291	1.180
15	John H. Cox, et al	0.4 T.R.M.	Deed	Oct. 15, 1873	101	291	1.180
16	John H. Cox, et al	0.4 T.R.M.	Deed	Oct. 15, 1873	101	291	1.180
17	John H. Cox, et al	0.4 T.R.M.	Deed	Oct. 15, 1873	101	291	1.180
18	John H. Cox, et al	0.4 T.R.M.	Deed	Oct. 15, 1873	101	291	1.180
19	John H. Cox, et al	0.4 T.R.M.	Deed	Oct. 15, 1873	101	291	1.180
20	John H. Cox, et al	0.4 T.R.M.	Deed	Oct. 15, 1873	101	291	1.180

RIGHT OF WAY AND TRACK MAP  
 CHICAGO AND NORTH-WESTERN RAILWAY  
 OPERATED BY THE  
 C. & N. W. RY. CO.  
 MADISON DIVISION  
 ILL. STATE LINE FROM BUNCOMBE, WIS TO MONTFORT, WIS  
 STA. 1568+75 TO STA. 1388+75  
 SCALE 1" = 400 FT.  
 OFFICE OF CHIEF ENGINEER  
 CHICAGO, ILL.  
 JUNE 30, 1917

WIS  
 V-28  
 10