

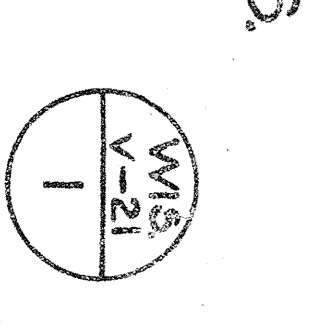
NO.	DESCRIPTION	DATE	BY	REVISION	DATE	BY
1	Original	1917	C. & N. W. Ry.			
2	Revised	1917	C. & N. W. Ry.			
3	Revised	1917	C. & N. W. Ry.			
4	Revised	1917	C. & N. W. Ry.			
5	Revised	1917	C. & N. W. Ry.			
6	Revised	1917	C. & N. W. Ry.			
7	Revised	1917	C. & N. W. Ry.			
8	Revised	1917	C. & N. W. Ry.			
9	Revised	1917	C. & N. W. Ry.			
10	Revised	1917	C. & N. W. Ry.			



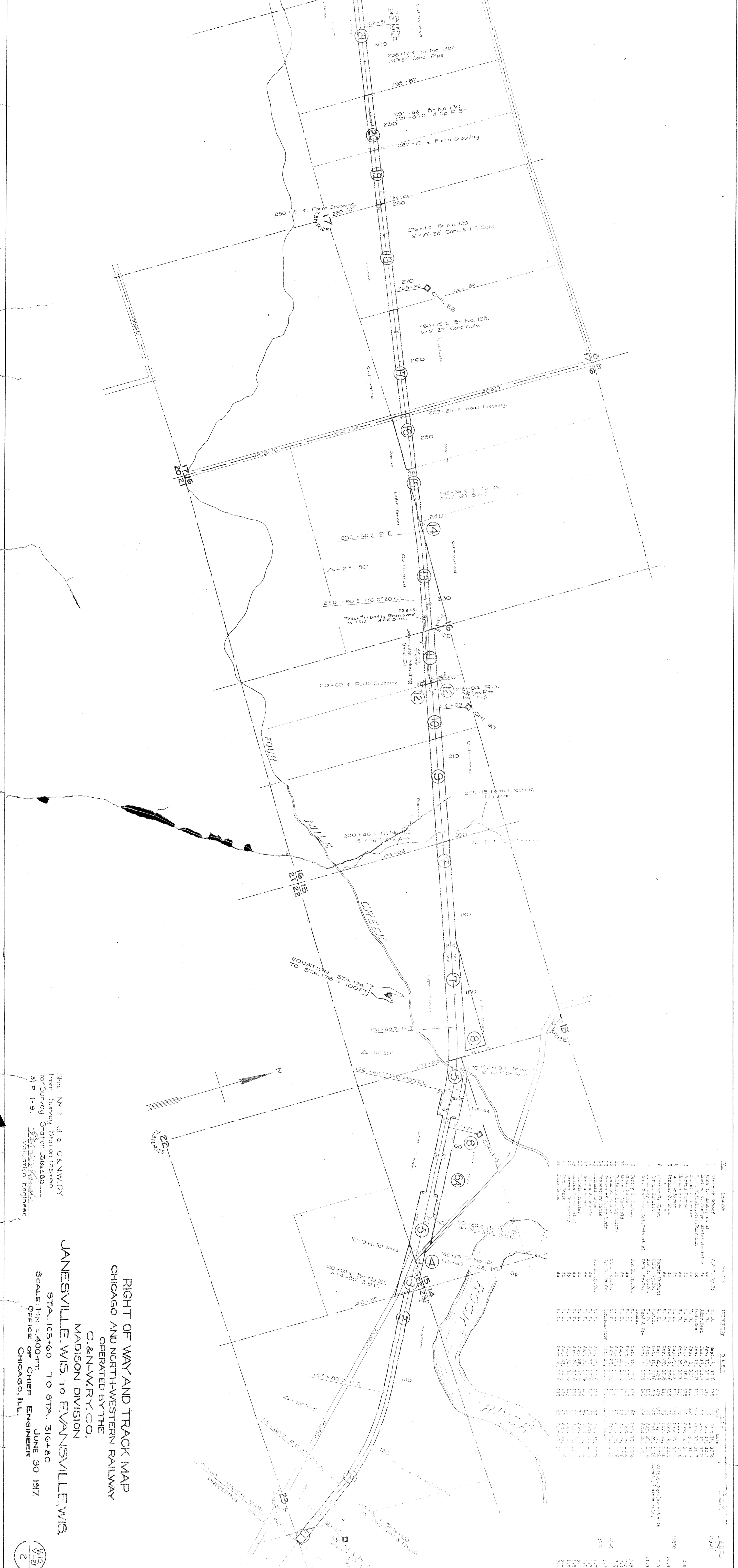
INDEX MAP
Scale 1 in. = 1 Mile

State of Illinois
County of Cook
I, the undersigned, Chief Engineer of the Chicago and Northwestern Railway, do hereby certify that this is a correct and true copy of the original survey, as shown to me by the records of said company, prepared from the records of said company.
Correct:
I, the undersigned, Chief Engineer of the Chicago and Northwestern Railway, do hereby certify that this is a correct and true copy of the original survey, as shown to me by the records of said company, prepared from the records of said company.
Subscribed and sworn to before me this 28th day of June, 1917.
My commission expires April 12, 1921.

RIGHT OF WAY AND TRACK MAP
CHICAGO AND NORTH-WESTERN RAILWAY
OPERATED BY THE
C. & N. W. RY. CO.
MADISON DIVISION
JANESVILLE, WIS. TO EVANSVILLE, WIS.
STA. 3+98 TO STA. 105+60
SCALE: 1 IN. = 400 FT.
OFFICE OF CHIEF ENGINEER
JUNE 30 1917
CHICAGO, ILL.

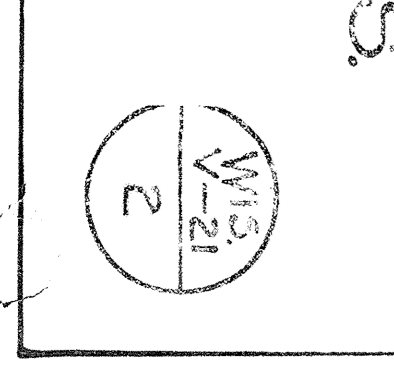


Prepared by C.M.V.C. Mar. 12, 1917
 Checked by C.M.V.C. Mar. 25, 1917
 C.M.V.C. Mar. 28, 1917

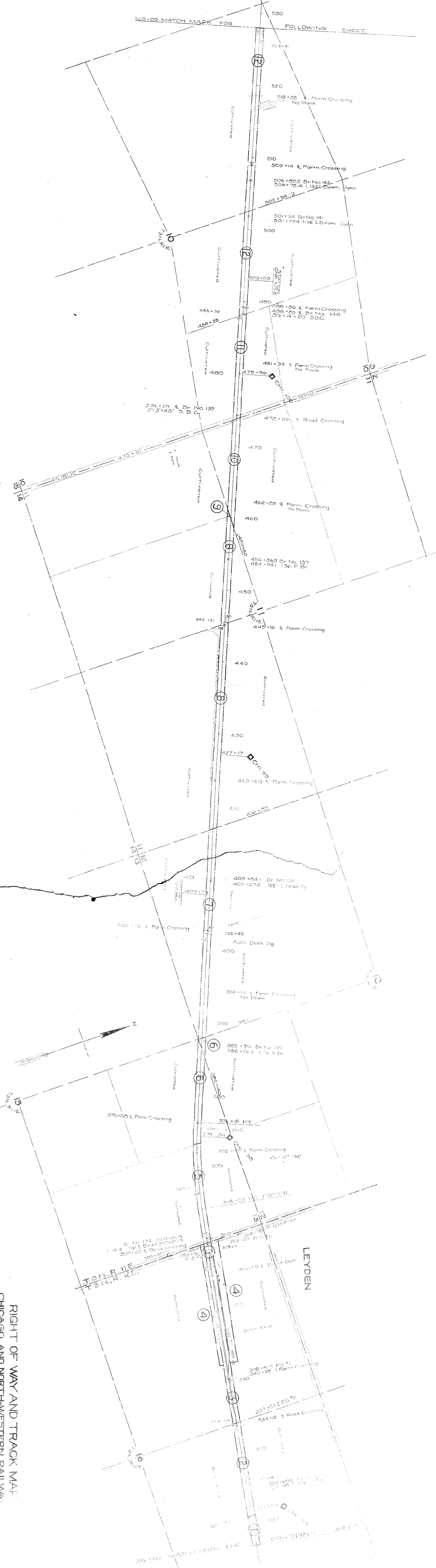


NO.	NAME	DATE	REVISION
1	Chicago Sheet	1890	
2	From R. 1000 at	1890	
3	Revised by J. P. McQuinn	1890	
4	Revised by J. P. McQuinn	1890	
5	Revised by J. P. McQuinn	1890	
6	Revised by J. P. McQuinn	1890	
7	Revised by J. P. McQuinn	1890	
8	Revised by J. P. McQuinn	1890	
9	Revised by J. P. McQuinn	1890	
10	Revised by J. P. McQuinn	1890	
11	Revised by J. P. McQuinn	1890	
12	Revised by J. P. McQuinn	1890	
13	Revised by J. P. McQuinn	1890	
14	Revised by J. P. McQuinn	1890	
15	Revised by J. P. McQuinn	1890	
16	Revised by J. P. McQuinn	1890	
17	Revised by J. P. McQuinn	1890	
18	Revised by J. P. McQuinn	1890	
19	Revised by J. P. McQuinn	1890	
20	Revised by J. P. McQuinn	1890	
21	Revised by J. P. McQuinn	1890	
22	Revised by J. P. McQuinn	1890	
23	Revised by J. P. McQuinn	1890	
24	Revised by J. P. McQuinn	1890	
25	Revised by J. P. McQuinn	1890	
26	Revised by J. P. McQuinn	1890	
27	Revised by J. P. McQuinn	1890	
28	Revised by J. P. McQuinn	1890	
29	Revised by J. P. McQuinn	1890	
30	Revised by J. P. McQuinn	1890	
31	Revised by J. P. McQuinn	1890	
32	Revised by J. P. McQuinn	1890	
33	Revised by J. P. McQuinn	1890	
34	Revised by J. P. McQuinn	1890	
35	Revised by J. P. McQuinn	1890	
36	Revised by J. P. McQuinn	1890	
37	Revised by J. P. McQuinn	1890	
38	Revised by J. P. McQuinn	1890	
39	Revised by J. P. McQuinn	1890	
40	Revised by J. P. McQuinn	1890	

RIGHT OF WAY AND TRACK MAP
 CHICAGO AND NORTH-WESTERN RAILWAY
 OPERATED BY THE
 C. & N-W. RY. CO.
 MADISON DIVISION
 JANESVILLE, WIS. TO EVANSVILLE, WIS.
 STA. 105+00 TO STA. 316+80
 SCALE: H.N. = 400-FT.
 OFFICE OF CHIEF ENGINEER
 CHICAGO, ILL.
 JUNE 30 1917



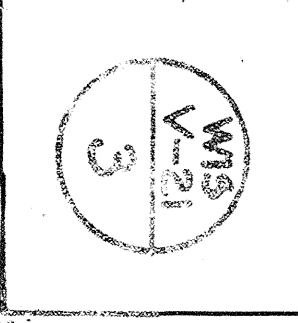
528-00 MATCH MARK FOR FOLLOWING SHEET.



Engineering
 Title
 Date

Sheet No. 8 of 16, C. & N. W. RY.
 From Survey Station 316+80 to
 Survey Station 528+00.
 S. F. T. S.
 Valiant on Engineer

RIGHT OF WAY AND TRACK MAP
 CHICAGO AND NORTH-WESTERN RAILWAY
 OPERATED BY THE
 C. & N. W. RY. CO.
 MADISON DIVISION
 JANESVILLE, WIS. TO EVANSVILLE, WIS.
 STA. 316+80 TO STA. 528+00
 SCALE: 1" = 400' FT.
 OFFICE OF CHIEF ENGINEER
 CHICAGO, ILL.
 JUNE 30 1917



NO.	DESCRIPTION	DATE	BY	REVISION
1	As per notes	6/30/17	S.F.T.S.	
2	As per notes	6/30/17	S.F.T.S.	
3	As per notes	6/30/17	S.F.T.S.	
4	As per notes	6/30/17	S.F.T.S.	
5	As per notes	6/30/17	S.F.T.S.	
6	As per notes	6/30/17	S.F.T.S.	
7	As per notes	6/30/17	S.F.T.S.	
8	As per notes	6/30/17	S.F.T.S.	
9	As per notes	6/30/17	S.F.T.S.	
10	As per notes	6/30/17	S.F.T.S.	
11	As per notes	6/30/17	S.F.T.S.	
12	As per notes	6/30/17	S.F.T.S.	
13	As per notes	6/30/17	S.F.T.S.	
14	As per notes	6/30/17	S.F.T.S.	
15	As per notes	6/30/17	S.F.T.S.	
16	As per notes	6/30/17	S.F.T.S.	
17	As per notes	6/30/17	S.F.T.S.	
18	As per notes	6/30/17	S.F.T.S.	
19	As per notes	6/30/17	S.F.T.S.	
20	As per notes	6/30/17	S.F.T.S.	
21	As per notes	6/30/17	S.F.T.S.	
22	As per notes	6/30/17	S.F.T.S.	
23	As per notes	6/30/17	S.F.T.S.	
24	As per notes	6/30/17	S.F.T.S.	
25	As per notes	6/30/17	S.F.T.S.	
26	As per notes	6/30/17	S.F.T.S.	
27	As per notes	6/30/17	S.F.T.S.	
28	As per notes	6/30/17	S.F.T.S.	
29	As per notes	6/30/17	S.F.T.S.	
30	As per notes	6/30/17	S.F.T.S.	
31	As per notes	6/30/17	S.F.T.S.	
32	As per notes	6/30/17	S.F.T.S.	
33	As per notes	6/30/17	S.F.T.S.	
34	As per notes	6/30/17	S.F.T.S.	
35	As per notes	6/30/17	S.F.T.S.	
36	As per notes	6/30/17	S.F.T.S.	
37	As per notes	6/30/17	S.F.T.S.	
38	As per notes	6/30/17	S.F.T.S.	
39	As per notes	6/30/17	S.F.T.S.	
40	As per notes	6/30/17	S.F.T.S.	
41	As per notes	6/30/17	S.F.T.S.	
42	As per notes	6/30/17	S.F.T.S.	
43	As per notes	6/30/17	S.F.T.S.	
44	As per notes	6/30/17	S.F.T.S.	
45	As per notes	6/30/17	S.F.T.S.	
46	As per notes	6/30/17	S.F.T.S.	
47	As per notes	6/30/17	S.F.T.S.	
48	As per notes	6/30/17	S.F.T.S.	
49	As per notes	6/30/17	S.F.T.S.	
50	As per notes	6/30/17	S.F.T.S.	
51	As per notes	6/30/17	S.F.T.S.	
52	As per notes	6/30/17	S.F.T.S.	
53	As per notes	6/30/17	S.F.T.S.	
54	As per notes	6/30/17	S.F.T.S.	
55	As per notes	6/30/17	S.F.T.S.	
56	As per notes	6/30/17	S.F.T.S.	
57	As per notes	6/30/17	S.F.T.S.	
58	As per notes	6/30/17	S.F.T.S.	
59	As per notes	6/30/17	S.F.T.S.	
60	As per notes	6/30/17	S.F.T.S.	
61	As per notes	6/30/17	S.F.T.S.	
62	As per notes	6/30/17	S.F.T.S.	
63	As per notes	6/30/17	S.F.T.S.	
64	As per notes	6/30/17	S.F.T.S.	
65	As per notes	6/30/17	S.F.T.S.	
66	As per notes	6/30/17	S.F.T.S.	
67	As per notes	6/30/17	S.F.T.S.	
68	As per notes	6/30/17	S.F.T.S.	
69	As per notes	6/30/17	S.F.T.S.	
70	As per notes	6/30/17	S.F.T.S.	
71	As per notes	6/30/17	S.F.T.S.	
72	As per notes	6/30/17	S.F.T.S.	
73	As per notes	6/30/17	S.F.T.S.	
74	As per notes	6/30/17	S.F.T.S.	
75	As per notes	6/30/17	S.F.T.S.	
76	As per notes	6/30/17	S.F.T.S.	
77	As per notes	6/30/17	S.F.T.S.	
78	As per notes	6/30/17	S.F.T.S.	
79	As per notes	6/30/17	S.F.T.S.	
80	As per notes	6/30/17	S.F.T.S.	
81	As per notes	6/30/17	S.F.T.S.	
82	As per notes	6/30/17	S.F.T.S.	
83	As per notes	6/30/17	S.F.T.S.	
84	As per notes	6/30/17	S.F.T.S.	
85	As per notes	6/30/17	S.F.T.S.	
86	As per notes	6/30/17	S.F.T.S.	
87	As per notes	6/30/17	S.F.T.S.	
88	As per notes	6/30/17	S.F.T.S.	
89	As per notes	6/30/17	S.F.T.S.	
90	As per notes	6/30/17	S.F.T.S.	
91	As per notes	6/30/17	S.F.T.S.	
92	As per notes	6/30/17	S.F.T.S.	
93	As per notes	6/30/17	S.F.T.S.	
94	As per notes	6/30/17	S.F.T.S.	
95	As per notes	6/30/17	S.F.T.S.	
96	As per notes	6/30/17	S.F.T.S.	
97	As per notes	6/30/17	S.F.T.S.	
98	As per notes	6/30/17	S.F.T.S.	
99	As per notes	6/30/17	S.F.T.S.	
100	As per notes	6/30/17	S.F.T.S.	

316+80 MATCH MARK FOR PRECEDING SHEET.

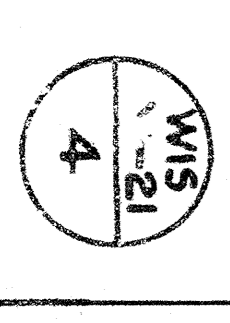
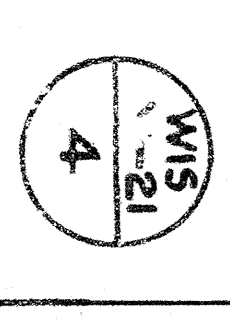


NO.	OWNER	SECTION	INSTRUMENT	DATE	ACR.	PERCENT	DATE	ACR.
1	J. A. Hopkins	J. A. Ry. Co.	R. D.	Aug. 25, 1885	115	80	Aug. 25, 1885	110
2	Fred. Kautz		R. D.	Aug. 31, 1885	115	42	Sept. 1, 1885	37000
3	H. F. Williams		R. D.	Aug. 21, 1885	115	9	Aug. 21, 1885	500
4	Mary Holt		R. D.	Aug. 31, 1885	115	41	Sept. 1, 1885	36000
5	Sam Deard as Part of #4		R. D.	Sept. 27, 1885	115	51	Sept. 27, 1885	36100
6	Mary Holt		R. D.	Aug. 21, 1885	115	44	Sept. 1, 1885	6300
7	Orlando Ross		R. D.	Aug. 21, 1885	115	44	Sept. 1, 1885	1700
8	Johns Topf, Inc.		R. D.	Aug. 21, 1885	115	75	Sept. 1, 1885	1500
9	Geo. F. Dobbie		R. D.	Aug. 21, 1885	115	17	Aug. 21, 1885	3450
10	Richard Stanton et al		R. D.	Aug. 20, 1885	115	15	Aug. 20, 1885	30000
11	Sam Deard as Part of #4		R. D.	Aug. 21, 1885	115	6	Aug. 21, 1885	475
12	Milton D. Barnard		R. D.	Aug. 20, 1885	115	4	Aug. 20, 1885	3950
13	Passenger Title		R. D.	Aug. 21, 1885	115	14	Aug. 21, 1885	1481
14	W. D. Perkins		R. D.	Aug. 21, 1885	115	24	Aug. 21, 1885	400
15	W. D. Perkins		R. D.	Aug. 21, 1885	115	24	Aug. 21, 1885	14.50
16	W. D. Perkins		R. D.	Oct. 29, 1885	115	70	Oct. 29, 1885	1110
17	W. D. Perkins		R. D.	Aug. 31, 1885	115	61	Oct. 1, 1885	350
18	W. D. Perkins		R. D.					
19	W. D. Perkins		R. D.					
20	W. D. Perkins		R. D.					
21	W. D. Perkins		R. D.					
22	Henry T. Anderson		R. D.					

RIGHT OF WAY AND TRACK MAP
 CHICAGO AND NORTH-WESTERN RAILWAY
 OPERATED BY THE
 C. & N. W. RY. CO.
 MADISON DIVISION
 JANESVILLE, WIS. TO EVANSVILLE, WIS.
 STA. 528+00 TO STA. 739+20
 SCALE: 1 IN. = 400 FT. JUNE 30 1917
 OFFICE OF CHIEF ENGINEER
 CHICAGO, ILL.

Sheet No. 4 of 6, C. & N. W. RY.
 from Survey Station 528+00
 to Survey Station 739+20.
 5-P 1-5
 Valuati n Engineer
 CHICAGO, ILL.

Plotted C.M.C.
 Traced C.M.C.
 Checked C.M.C.
 May 13, 1917
 May 23, 1917
 May 30, 1917



Plotted C.M.C. J. E. 15, 1917
 Checked H.W.J. J. E. 23, 1917
 Checked C.M.C. J. E. 30, 1917



No.	SECTION	DATE	BY	REVISION
1	William Hays	Aug. 31, 1905	J. E.	Book 115, Page 56
2	Frederick Book	Aug. 31, 1905	J. E.	Book 115, Page 57
3	David C. Hays	Aug. 31, 1905	J. E.	Book 115, Page 58
4	James C. Hays	Aug. 31, 1905	J. E.	Book 115, Page 59
5	William Hays	Aug. 31, 1905	J. E.	Book 115, Page 60
6	William Hays	Aug. 31, 1905	J. E.	Book 115, Page 61
7	William Hays	Aug. 31, 1905	J. E.	Book 115, Page 62
8	William Hays	Aug. 31, 1905	J. E.	Book 115, Page 63
9	William Hays	Aug. 31, 1905	J. E.	Book 115, Page 64
10	William Hays	Aug. 31, 1905	J. E.	Book 115, Page 65
11	William Hays	Aug. 31, 1905	J. E.	Book 115, Page 66
12	William Hays	Aug. 31, 1905	J. E.	Book 115, Page 67
13	William Hays	Aug. 31, 1905	J. E.	Book 115, Page 68
14	William Hays	Aug. 31, 1905	J. E.	Book 115, Page 69
15	William Hays	Aug. 31, 1905	J. E.	Book 115, Page 70
16	William Hays	Aug. 31, 1905	J. E.	Book 115, Page 71
17	William Hays	Aug. 31, 1905	J. E.	Book 115, Page 72
18	William Hays	Aug. 31, 1905	J. E.	Book 115, Page 73
19	William Hays	Aug. 31, 1905	J. E.	Book 115, Page 74
20	William Hays	Aug. 31, 1905	J. E.	Book 115, Page 75
21	William Hays	Aug. 31, 1905	J. E.	Book 115, Page 76
22	William Hays	Aug. 31, 1905	J. E.	Book 115, Page 77
23	William Hays	Aug. 31, 1905	J. E.	Book 115, Page 78
24	William Hays	Aug. 31, 1905	J. E.	Book 115, Page 79
25	William Hays	Aug. 31, 1905	J. E.	Book 115, Page 80
26	William Hays	Aug. 31, 1905	J. E.	Book 115, Page 81
27	William Hays	Aug. 31, 1905	J. E.	Book 115, Page 82
28	William Hays	Aug. 31, 1905	J. E.	Book 115, Page 83
29	William Hays	Aug. 31, 1905	J. E.	Book 115, Page 84
30	William Hays	Aug. 31, 1905	J. E.	Book 115, Page 85
31	William Hays	Aug. 31, 1905	J. E.	Book 115, Page 86
32	William Hays	Aug. 31, 1905	J. E.	Book 115, Page 87
33	William Hays	Aug. 31, 1905	J. E.	Book 115, Page 88
34	William Hays	Aug. 31, 1905	J. E.	Book 115, Page 89
35	William Hays	Aug. 31, 1905	J. E.	Book 115, Page 90
36	William Hays	Aug. 31, 1905	J. E.	Book 115, Page 91
37	William Hays	Aug. 31, 1905	J. E.	Book 115, Page 92
38	William Hays	Aug. 31, 1905	J. E.	Book 115, Page 93
39	William Hays	Aug. 31, 1905	J. E.	Book 115, Page 94
40	William Hays	Aug. 31, 1905	J. E.	Book 115, Page 95
41	William Hays	Aug. 31, 1905	J. E.	Book 115, Page 96
42	William Hays	Aug. 31, 1905	J. E.	Book 115, Page 97
43	William Hays	Aug. 31, 1905	J. E.	Book 115, Page 98
44	William Hays	Aug. 31, 1905	J. E.	Book 115, Page 99
45	William Hays	Aug. 31, 1905	J. E.	Book 115, Page 100

Sheet No. 5 of 6 - C. & N. W. RY.
 from Survey Station 739+20
 to Survey Station 833+66.1
 5/2 1-5.
 Valuation Engineer.

RIGHT OF WAY AND TRACK MAP
 CHICAGO AND NORTH-WESTERN RAILWAY
 OPERATED BY THE
 C. & N.-W. RY. CO.
 MADISON DIVISION
 JANESVILLE, WIS. TO EVANSVILLE, WIS.

STA. 739+20 TO STA. 833+66.1
 SCALE 1/4" = 400 FT.
 OFFICE OF CHIEF ENGINEER
 CHICAGO, ILL.
 JUNE 30 1917

