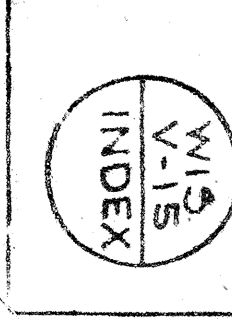


CHICAGO AND NORTH-WESTERN RAILWAY  
 OPERATED BY THE  
 C. & N. W. RY. CO.  
 NORTHERN WISCONSIN DIVISION  
 FOND DU LAC WIS. TO PRINCETON WIS.  
 STA. 0+00 TO STA. 1867+80  
 SCALE: 1 in. = 1 Mile  
 OFFICE OF CHIEF ENGINEER  
 CHICAGO, ILL.



PLATTED & R.G.C. - DEC 28, 1916  
 TRACED - V.V.C. - JAN. 6, 1917  
 CHECKED - R.M.C. - JAN. 11, 1917



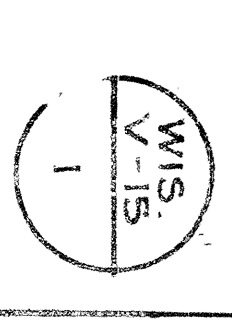
NO.	DATE	BY	REASON	REVISION	DATE	BY	REASON
1	Jan. 10, 1917	John E. Gould	Not recorded				
2	Dec. 29, 1917	H. Langford	"				
3	Dec. 29, 1917	H. Langford	"				
4	Dec. 15, 1917	John E. Gould	"				
5	Dec. 29, 1917	John E. Gould	"				

State of Illinois  
 County of Cook  
 I, the undersigned, officer of the Chicago and North Western Railway do hereby certify that this is a correct map in a series of 110 primary sheets and 3 supplemental sheets of said railway from survey station 0+00 to survey station 18+78.00, N.W. 1/4, Division, State of Wisconsin, prepared from the records of said company.

Correct Valuation Engineer  
*John E. Gould*  
 Subscribed and sworn to before me, this 29th day of Dec. 1917.  
 Notary Public for the County of Cook, State of Illinois  
*John E. Gould*

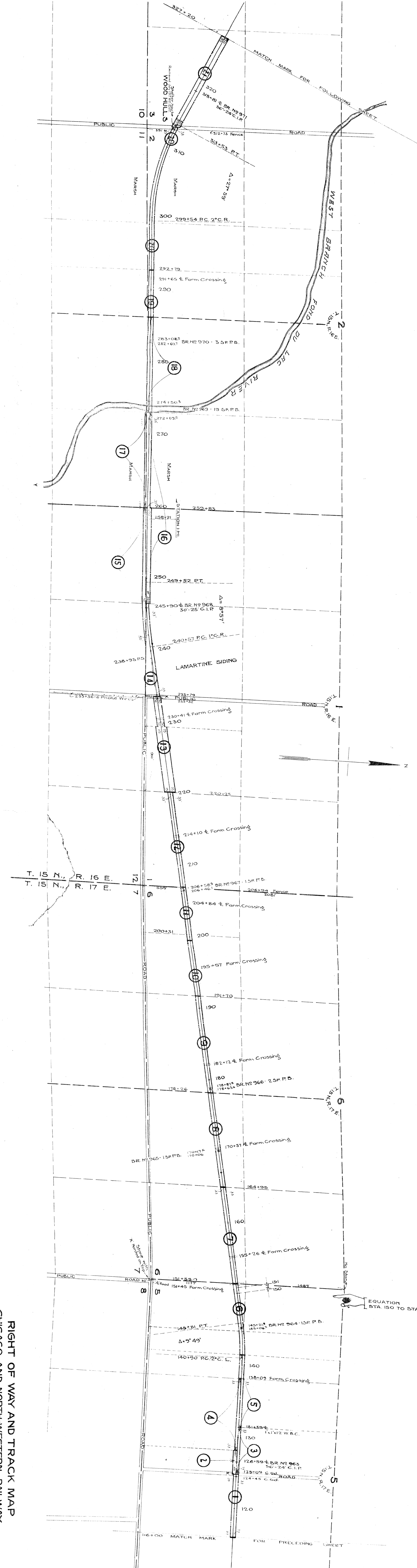
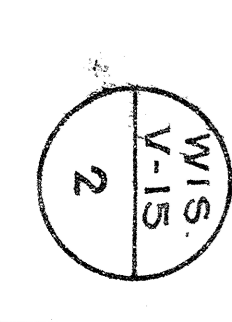
RIGHT OF WAY AND TRACK MAP  
 CHICAGO AND NORTH-WESTERN RAILWAY  
 OPERATED BY THE  
 C. & N.-W. RY. CO.  
 NORTHERN WISCONSIN DIVISION  
 FOND DU LAC, WIS. TO PRINCETON, WIS.  
 STA. 0+00 TO STA. 116+00

SCALE 1" = 400 FT.  
 OFFICE OF CHIEF ENGINEER  
 CHICAGO, ILL.  
 JUNE 30, 1917.



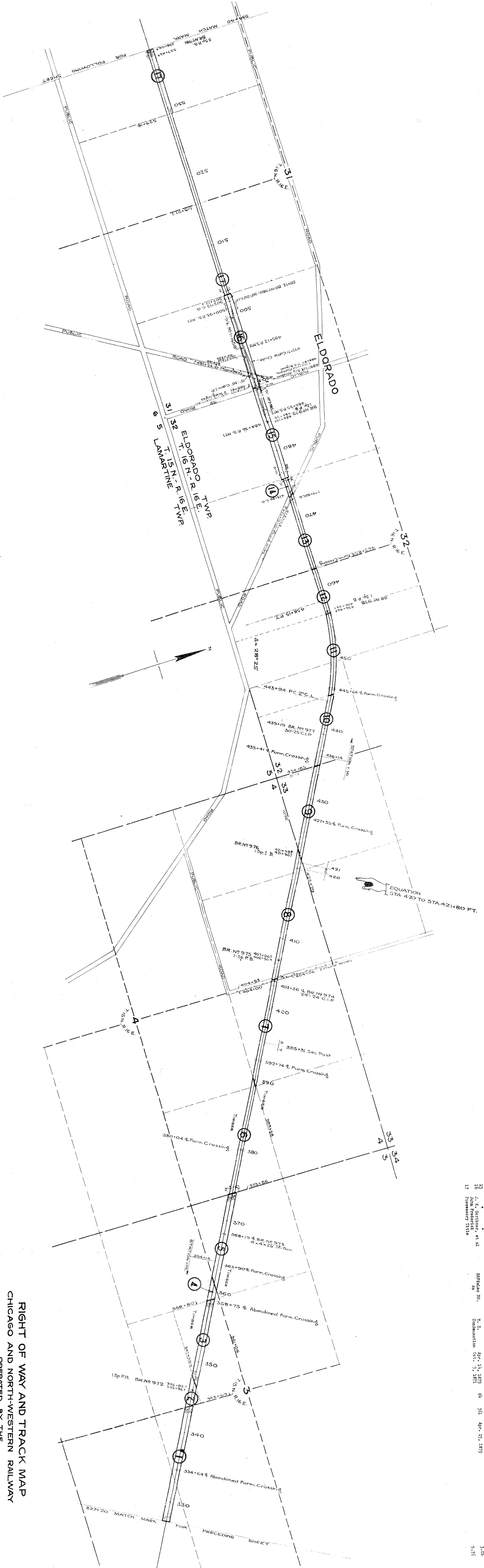
PLATTED - R.G.C. - NOV. 23, 1916.  
 CHECKED - R.E.C. - DEC. 20, 1916.

RIGHT OF WAY AND TRACK MAP  
 CHICAGO AND NORTH-WESTERN RAILWAY  
 OPERATED BY THE  
 C. & N.-W. RY. CO.  
 NORTHERN WISCONSIN DIVISION  
**FOND DU LAC, WIS. TO PRINCETON, WIS.**  
 STA. 116+00 TO STA. 327+20  
 SCALE 1" = 400' FT.  
 OFFICE OF CHIEF ENGINEER.  
 CHICAGO, ILL.  
 JUNE 30, 1917.



NO.	OWNER	ACREAGE	DATE	REMARKS
1	Patrick Brown	40	Jan 27, 1877	
2	James Brown	40	Jan 27, 1877	
3	James Brown	40	Jan 27, 1877	
4	James Brown	40	Jan 27, 1877	
5	James Brown	40	Jan 27, 1877	
6	James Brown	40	Jan 27, 1877	
7	James Brown	40	Jan 27, 1877	
8	James Brown	40	Jan 27, 1877	
9	James Brown	40	Jan 27, 1877	
10	James Brown	40	Jan 27, 1877	
11	James Brown	40	Jan 27, 1877	
12	James Brown	40	Jan 27, 1877	
13	James Brown	40	Jan 27, 1877	
14	James Brown	40	Jan 27, 1877	
15	James Brown	40	Jan 27, 1877	
16	James Brown	40	Jan 27, 1877	
17	James Brown	40	Jan 27, 1877	
18	James Brown	40	Jan 27, 1877	
19	James Brown	40	Jan 27, 1877	
20	James Brown	40	Jan 27, 1877	
21	James Brown	40	Jan 27, 1877	
22	James Brown	40	Jan 27, 1877	

PLATTED - R.C.C. - DEC. 4, 1916.  
 TRACKED - V.V.C. - DEC. 10, 1916.  
 CHECKED - R.C.C. - DEC. 20, 1916.



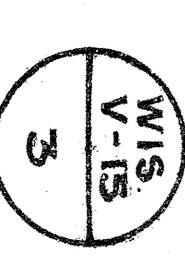
NO.	OWNER	SECTION	DATE	BOOK	PAGE	RECORD	DATE	REMARKS	A.E.A.
1	F. A. Foster	34	Apr. 24, 1872	Clear, Circuit Court	3100	2-79			3.05
2	John Hughes	40	"	"	"	2-86			3.06
3	"	40	"	"	"	2800			3.04
4	"	40	"	"	"	2800			3.04
5	F. Halbach	40	Oct. 17, 1871	77	419	July 27, 1877			3.04
6	H. Halbach, et al.	40	Oct. 17, 1871	77	420	July 27, 1877			3.04
7	"	40	Jan. 17, 1871	77	420	July 27, 1877			3.04
8	J. J. Halley and Possessory Title	40	"	"	"	"			1.90
9	Judith Halley	40	"	"	"	"			1.92
10	"	40	"	"	"	"			1.00
11	"	40	"	"	"	"			1.62
12	Possessory Title	40	"	"	"	"			1.62
13	Same tract as parcel 510	40	"	"	"	"			1.00
14	"	40	"	"	"	"			3.05
15	J. K. Gardner, et al.	40	Apr. 14, 1879	84	361	Apr. 19, 1879			3.05
16	"	40	Oct. 9, 1871	"	"	"			5.76
17	Possessory Title	40	"	"	"	"			5.76

RIGHT OF WAY AND TRACK MAP  
 CHICAGO AND NORTH-WESTERN RAILWAY  
 OPERATED BY THE  
 C. & N.-W. RY. CO.  
 NORTHERN WISCONSIN DIVISION

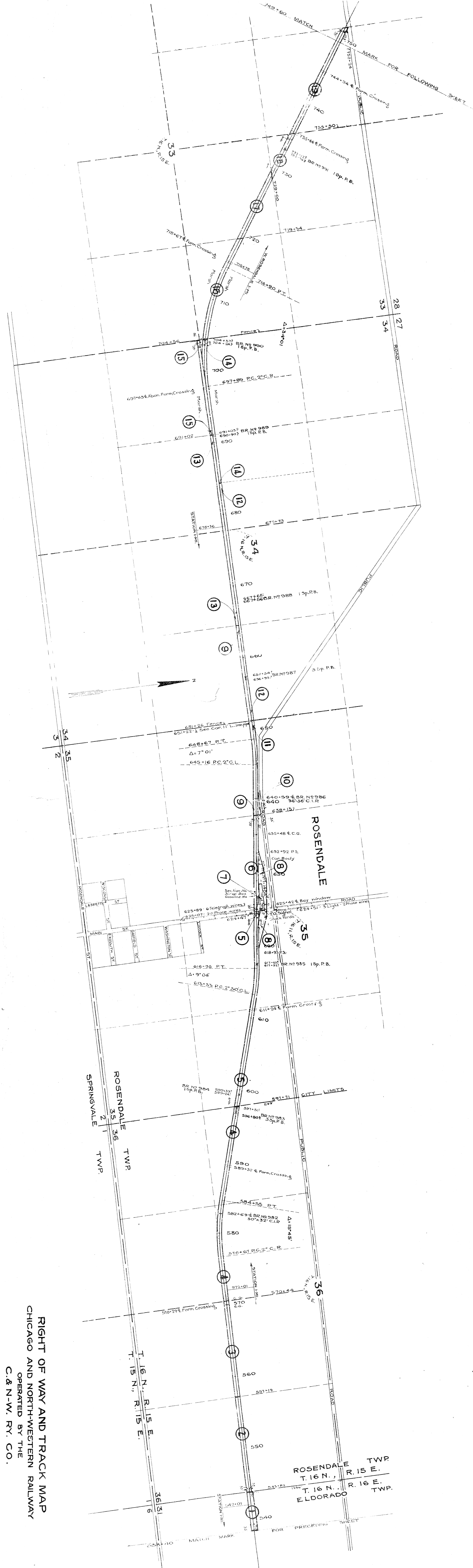
FOND DU LAC, WIS. TO PRINCETON, WIS.  
 STA. 327+20 TO STA. 538+40

SCALE 1-IN. = 400 FT.  
 OFFICE OF CHIEF ENGINEER  
 CHICAGO, ILL.

Sheet No. 3 - of 13 C. & N.W. RY.  
 from Survey Station 527+20  
 to Survey Station 538+40  
 10-P. 3-S.  
 Validation Engineer



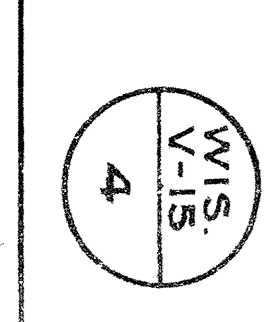
PLATTED - R.G.C. - DEC 6, 1916.  
 TRACKED - N.W.C. - DEC 4, 1916.  
 218893 - N.W.C. - DEC 4, 1916.

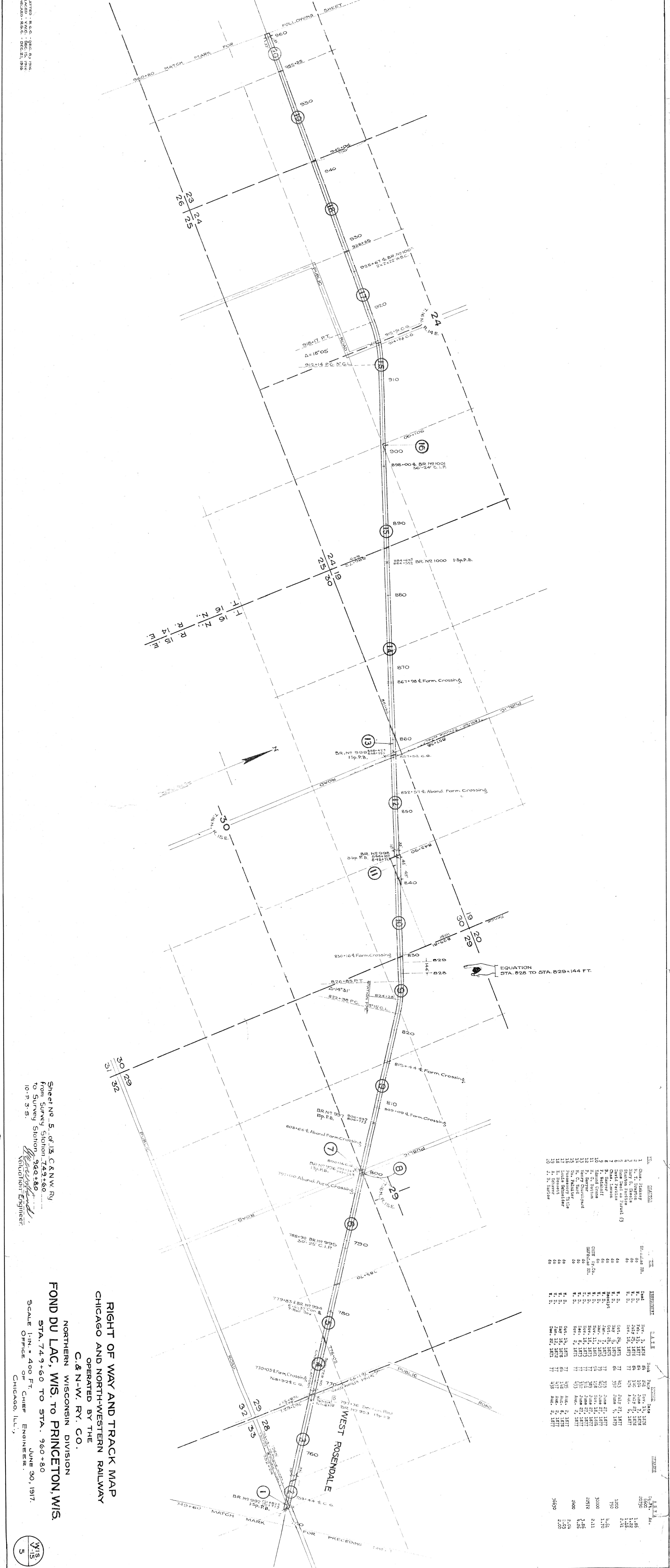


NO.	NAME	DATE	REMARKS	AMOUNT
1	Receipt for	Apr. 26, 1872	84 1/2 July 6, 1872	2.00
2	Receipt for	Apr. 26, 1872	84 1/2 July 6, 1872	1.00
3	Receipt for	Apr. 26, 1872	84 1/2 July 6, 1872	1.00
4	Receipt for	Apr. 26, 1872	84 1/2 July 6, 1872	1.00
5	Receipt for	Apr. 26, 1872	84 1/2 July 6, 1872	1.00
6	Receipt for	Apr. 26, 1872	84 1/2 July 6, 1872	1.00
7	Receipt for	Apr. 26, 1872	84 1/2 July 6, 1872	1.00
8	Receipt for	Apr. 26, 1872	84 1/2 July 6, 1872	1.00
9	Receipt for	Apr. 26, 1872	84 1/2 July 6, 1872	1.00
10	Receipt for	Apr. 26, 1872	84 1/2 July 6, 1872	1.00
11	Receipt for	Apr. 26, 1872	84 1/2 July 6, 1872	1.00
12	Receipt for	Apr. 26, 1872	84 1/2 July 6, 1872	1.00
13	Receipt for	Apr. 26, 1872	84 1/2 July 6, 1872	1.00
14	Receipt for	Apr. 26, 1872	84 1/2 July 6, 1872	1.00
15	Receipt for	Apr. 26, 1872	84 1/2 July 6, 1872	1.00
16	Receipt for	Apr. 26, 1872	84 1/2 July 6, 1872	1.00
17	Receipt for	Apr. 26, 1872	84 1/2 July 6, 1872	1.00
18	Receipt for	Apr. 26, 1872	84 1/2 July 6, 1872	1.00
19	Receipt for	Apr. 26, 1872	84 1/2 July 6, 1872	1.00

Sheet No. 4 of 12 C & N.W. Ry  
 from Survey Station 538+40  
 to Survey Station 749+60  
 10-P. 3-5  
 Validation Engineer

RIGHT OF WAY AND TRACK MAP  
 CHICAGO AND NORTH-WESTERN RAILWAY  
 OPERATED BY THE  
 C. & N.-W. RY. CO.  
 NORTHERN WISCONSIN DIVISION  
**FOND DU LAC, WIS. TO PRINCETON, WIS.**  
 SCALE 1" = 400 FT.  
 OFFICE OF CHIEF ENGINEER.  
 JUNE 30, 1917.  
 CHICAGO, ILL.





NO.	DATE	BY	REVISION	SCALE	DATE	BY	REVISION
1	Nov. 3, 1872	W. D.	Plan	1:10	Nov. 19, 1872	W. D.	Plan
2	Nov. 13, 1872	W. D.	Plan	1:10	Nov. 27, 1872	W. D.	Plan
3	Nov. 13, 1872	W. D.	Plan	1:10	Nov. 27, 1872	W. D.	Plan
4	Nov. 13, 1872	W. D.	Plan	1:10	Nov. 27, 1872	W. D.	Plan
5	Nov. 13, 1872	W. D.	Plan	1:10	Nov. 27, 1872	W. D.	Plan
6	Nov. 13, 1872	W. D.	Plan	1:10	Nov. 27, 1872	W. D.	Plan
7	Nov. 13, 1872	W. D.	Plan	1:10	Nov. 27, 1872	W. D.	Plan
8	Nov. 13, 1872	W. D.	Plan	1:10	Nov. 27, 1872	W. D.	Plan
9	Nov. 13, 1872	W. D.	Plan	1:10	Nov. 27, 1872	W. D.	Plan
10	Nov. 13, 1872	W. D.	Plan	1:10	Nov. 27, 1872	W. D.	Plan
11	Nov. 13, 1872	W. D.	Plan	1:10	Nov. 27, 1872	W. D.	Plan
12	Nov. 13, 1872	W. D.	Plan	1:10	Nov. 27, 1872	W. D.	Plan
13	Nov. 13, 1872	W. D.	Plan	1:10	Nov. 27, 1872	W. D.	Plan
14	Nov. 13, 1872	W. D.	Plan	1:10	Nov. 27, 1872	W. D.	Plan
15	Nov. 13, 1872	W. D.	Plan	1:10	Nov. 27, 1872	W. D.	Plan
16	Nov. 13, 1872	W. D.	Plan	1:10	Nov. 27, 1872	W. D.	Plan
17	Nov. 13, 1872	W. D.	Plan	1:10	Nov. 27, 1872	W. D.	Plan
18	Nov. 13, 1872	W. D.	Plan	1:10	Nov. 27, 1872	W. D.	Plan
19	Nov. 13, 1872	W. D.	Plan	1:10	Nov. 27, 1872	W. D.	Plan
20	Nov. 13, 1872	W. D.	Plan	1:10	Nov. 27, 1872	W. D.	Plan

DRAWING - R.S.C. - REE & BROS.  
 TRACKED - V.W.C. - DEC. 15, 1916  
 CHECKED - R.S.C. - DEC. 21, 1916

MATCH MARK FOR PRECEDING SHEET

MATCH MARK FOR FOLLOWING SHEET

EQUATION STA. 828 TO STA. 829 = 144 FT.

RIGHT OF WAY AND TRACK MAP  
 CHICAGO AND NORTH-WESTERN RAILWAY  
 OPERATED BY THE  
 C. & N.-W. RY. CO.  
 NORTHERN WISCONSIN DIVISION  
**FOND DU LAC, WIS. TO PRINCETON, WIS.**  
 STA. 749+60 TO STA. 960+80  
 SCALE 1" = 400 FT.  
 OFFICE OF CHIEF ENGINEERS.  
 CHICAGO, ILL.

SHEET NO. 5 OF 13 C.A.N.W. RY.  
 FROM SURVEY STATION 749+60  
 TO SURVEY STATION 960+80  
 10-P. 3-S.

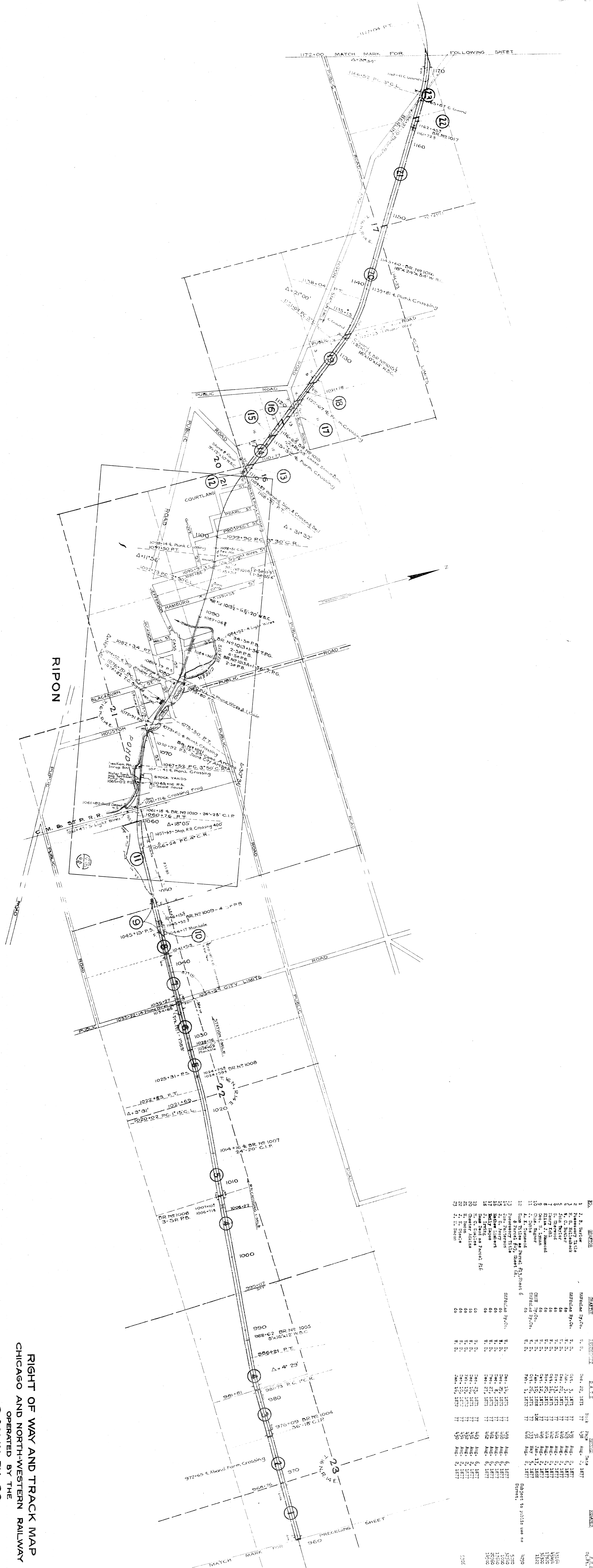
JUN 30, 1917.

WIS. 1:15  
 5

PLATTED : R.C.C. DEC. 12, 1916  
 TRACED : W.V.C. DEC. 30, 1916  
 CHECKED : R.C.C. JAN. 21, 1917.

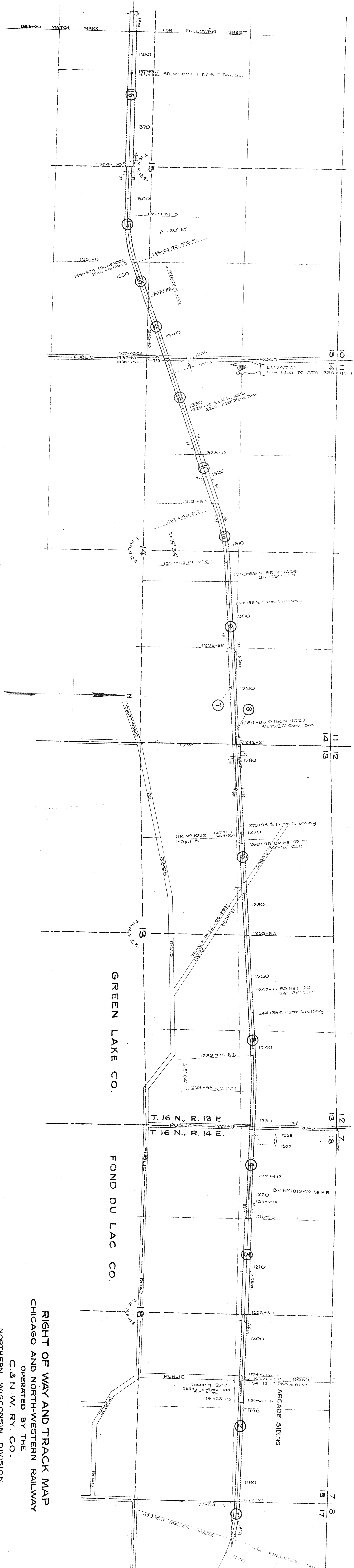
Sheet No. 6 of 13 C. & N.W. Ry.  
 from Survey Station 360+80  
 to Survey Station 1172+00  
 10-P. 3-S.  
 Valuation Engineer.

WIS  
 V-15  
 6



NO.	SECTION	DATE	BY	REVISION
1	1. B. Taylor	Dec. 22, 1911	W. D.	Aug. 21, 1917
2	2. Possessory Title			Aug. 21, 1917
3	3. H. G. Hollenbeck			Aug. 21, 1917
4	4. C. A. Miller			Aug. 21, 1917
5	5. S. Shepard			Aug. 21, 1917
6	6. Henry Kohl			Aug. 21, 1917
7	7. S. Shepard			Aug. 21, 1917
8	8. H. D. D.			Aug. 21, 1917
9	9. C. A. Miller			Aug. 21, 1917
10	10. S. Shepard			Aug. 21, 1917
11	11. C. A. Miller			Aug. 21, 1917
12	12. S. Shepard			Aug. 21, 1917
13	13. C. A. Miller			Aug. 21, 1917
14	14. S. Shepard			Aug. 21, 1917
15	15. C. A. Miller			Aug. 21, 1917
16	16. S. Shepard			Aug. 21, 1917
17	17. C. A. Miller			Aug. 21, 1917
18	18. S. Shepard			Aug. 21, 1917
19	19. C. A. Miller			Aug. 21, 1917
20	20. S. Shepard			Aug. 21, 1917
21	21. C. A. Miller			Aug. 21, 1917
22	22. S. Shepard			Aug. 21, 1917
23	23. C. A. Miller			Aug. 21, 1917
24	24. S. Shepard			Aug. 21, 1917
25	25. C. A. Miller			Aug. 21, 1917

RIGHT OF WAY AND TRACK MAP  
 CHICAGO AND NORTH-WESTERN RAILWAY  
 OPERATED BY THE  
 C. & N.-W. RY. CO.  
 NORTHERN WISCONSIN DIVISION  
 FOND DU LAC, WIS. TO PRINCETON, WIS.  
 STA. 960+80 TO STA. 1172+00  
 SCALE 1-IN. = 400 FT. CHIEF ENGINEER.  
 CHICAGO, ILL., JUNE 30, 1917.



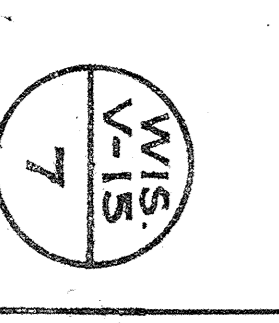
NO.	GRANTOR	GRANTEE	INSTRUMENT	D.A.T.E.	BOOK	PAGES	DATE	REMARKS	A.M.E.A.
1	Possessory Title	Distance 101.	N. D.	Dec. 2, 1871	77	182	Aug. 2, 1877		1.91
2	David C. Williams, et al	do	N. D.	Dec. 22, 1871	77	182	Aug. 2, 1877		1.00
3	John Walker	do	N. D.	Dec. 22, 1871	77	182	Aug. 2, 1877		1.05
4	William Sawyer	do	N. D.	Dec. 22, 1871	77	182	Aug. 2, 1877		1.05
5	James H. Allen	do	N. D.	Dec. 22, 1871	77	182	Aug. 2, 1877		1.05
6	Henry H. Allen	do	N. D.	Dec. 22, 1871	77	182	Aug. 2, 1877		1.05
7	Richard Krause	do	N. D.	Dec. 22, 1871	77	182	Aug. 2, 1877		1.05
8	John Schmitt	do	N. D.	Dec. 22, 1871	77	182	Aug. 2, 1877		1.05
9	John Schmitt	do	N. D.	Dec. 22, 1871	77	182	Aug. 2, 1877		1.05
10	Frederick Cook	do	N. D.	Dec. 22, 1871	77	182	Aug. 2, 1877		1.05
11	Joseph Chappin	do	N. D.	Dec. 22, 1871	77	182	Aug. 2, 1877		1.05
12	William G. Galt	do	N. D.	Dec. 22, 1871	77	182	Aug. 2, 1877		1.05
13	William G. Galt	do	N. D.	Dec. 22, 1871	77	182	Aug. 2, 1877		1.05
14	William G. Galt	do	N. D.	Dec. 22, 1871	77	182	Aug. 2, 1877		1.05
15	Thomas T. Chapman	do	N. D.	Dec. 22, 1871	77	182	Aug. 2, 1877		1.05
16	W. H. Powers	do	N. D.	Dec. 22, 1871	77	182	Aug. 2, 1877		1.05

PLATTED - DEC. 15, 1916  
 TRACKED - JAN. 2, 1917  
 CHECKED - JAN. 3, 1917

SHEET NO. 7 OF 13, C. & N.W. RY.  
 FROM SURVEY STATION 1172+00  
 TO SURVEY STATION 1383+20  
 10-P. 3" S.  
 VICTOR H. GARDNER  
 CONSULTING ENGINEER

RIGHT OF WAY AND TRACK MAP  
 CHICAGO AND NORTH-WESTERN RAILWAY  
 OPERATED BY THE  
 C. & N.W. RY. CO.  
 NORTHERN WISCONSIN DIVISION  
**FOND DU LAC, WIS. TO PRINCETON, WIS.**  
 STA. 1172+00 TO STA. 1383+20  
 SCALE 1" = 400 FT.  
 OFFICE OF CHIEF ENGINEER  
 CHICAGO, ILL.

JUNE 30, 1917  
 CHIEF ENGINEER





PLATTED - 1895 - 1896  
 RECORDED - 1895 - 1896  
 CHECKED - 1895 - 1896

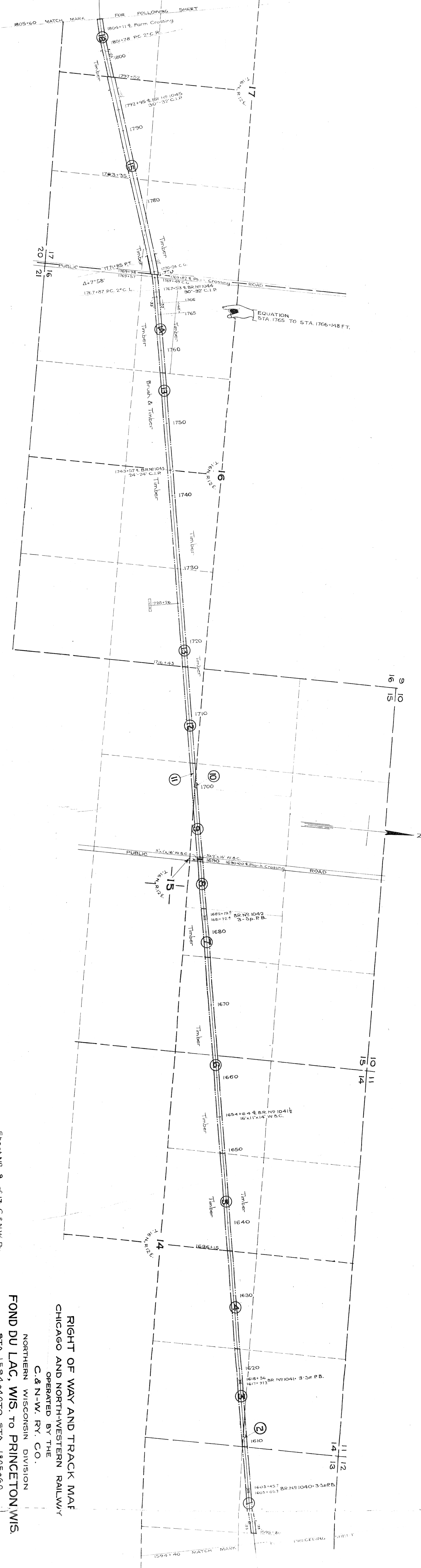


NO.	OWNER	ACREAGE	DATE	BOOK	PAGE	REMARKS
1	Thomas J. Grabow	40	Jan. 20, 1872	37	112	See 25, 1872
2	Charles C. Viles & Husband	40	Nov. 12, 1872	37	113	See 25, 1872
3	John H. Griggs	40	Jan. 12, 1872	37	114	See 25, 1872
4	Richard C. Viles	40	Jan. 12, 1872	37	115	See 25, 1872
5	Theodore C. Viles et al.	40	Jan. 12, 1872	37	116	See 25, 1872
6	J. Richard C. Viles	40	Jan. 12, 1872	37	117	See 25, 1872
7	Alford C. Viles	40	Jan. 12, 1872	37	118	See 25, 1872
8	Charles C. Viles	40	Jan. 12, 1872	37	119	See 25, 1872
9	Charles C. Viles	40	Jan. 12, 1872	37	120	See 25, 1872
10	David Wilson	40	Jan. 12, 1872	37	121	See 25, 1872
11	David Wilson	40	Jan. 12, 1872	37	122	See 25, 1872
12	George B. Nelson	40	Jan. 12, 1872	37	123	See 25, 1872
13	George B. Nelson	40	Jan. 12, 1872	37	124	See 25, 1872
14	George B. Nelson	40	Jan. 12, 1872	37	125	See 25, 1872
15	George B. Nelson	40	Jan. 12, 1872	37	126	See 25, 1872

RIGHT OF WAY AND TRACK MAP  
 CHICAGO AND NORTH-WESTERN RAILWAY  
 OPERATED BY THE  
 C. & N.-W. RY. CO.  
 NORTHERN WISCONSIN DIVISION  
 FOND DU LAC, WIS. TO PRINCETON, WIS.  
 STA. 1583+20 TO STA. 1594+40  
 SCALE 1" = 400 FT.  
 JUNE 30, 1917.  
 OFFICE OF CHIEF ENGINEER,  
 CHICAGO, ILL.

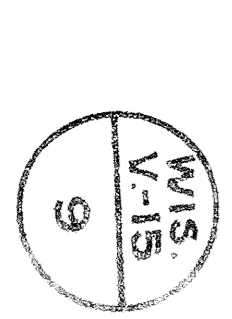
Sheet No. 8 of 13, C. & N.W. Ry.  
 from Survey Station 1583+20  
 to Survey Station 1594+40  
 10-P. 5-S.  
 Voluntary Engineer  
 C. & N.W. Ry. Co.

PLATTED - R.G.C. - DEC. 18, 1916.  
 TRACKED - V.W.C. - JAN. 4, 1917.  
 CHECKED - R.G.C. - JAN. 5, 1917.



NO.	NAME	DATE	PAGE	REVISION	DATE	REVISION	DATE	REVISION
1	Geo. D. Baker	Jan. 11, 1873	521	1	1873	1	1873	1
2	Geo. D. Baker	Jan. 16, 1872	521	2	1872	2	1872	2
3	Geo. D. Baker	Feb. 29, 1873	521	3	1873	3	1873	3
4	Geo. D. Baker	Feb. 29, 1873	521	4	1873	4	1873	4
5	Geo. D. Baker	Feb. 29, 1873	521	5	1873	5	1873	5
6	Geo. D. Baker	Feb. 29, 1873	521	6	1873	6	1873	6
7	Geo. D. Baker	Feb. 29, 1873	521	7	1873	7	1873	7
8	Geo. D. Baker	Feb. 29, 1873	521	8	1873	8	1873	8
9	Geo. D. Baker	Feb. 29, 1873	521	9	1873	9	1873	9
10	Geo. D. Baker	Feb. 29, 1873	521	10	1873	10	1873	10
11	Geo. D. Baker	Feb. 29, 1873	521	11	1873	11	1873	11
12	Geo. D. Baker	Feb. 29, 1873	521	12	1873	12	1873	12
13	Geo. D. Baker	Feb. 29, 1873	521	13	1873	13	1873	13
14	Geo. D. Baker	Feb. 29, 1873	521	14	1873	14	1873	14
15	Geo. D. Baker	Feb. 29, 1873	521	15	1873	15	1873	15
16	Geo. D. Baker	Feb. 29, 1873	521	16	1873	16	1873	16
17	Geo. D. Baker	Feb. 29, 1873	521	17	1873	17	1873	17
18	Geo. D. Baker	Feb. 29, 1873	521	18	1873	18	1873	18
19	Geo. D. Baker	Feb. 29, 1873	521	19	1873	19	1873	19
20	Geo. D. Baker	Feb. 29, 1873	521	20	1873	20	1873	20
21	Geo. D. Baker	Feb. 29, 1873	521	21	1873	21	1873	21

RIGHT OF WAY AND TRACK MAP  
 CHICAGO AND NORTH-WESTERN RAILWAY  
 OPERATED BY THE  
 C. & N-W. RY. CO.  
 NORTHERN WISCONSIN DIVISION  
**FOND DU LAC, WIS. TO PRINCETON, WIS.**  
 STA. 1594+40 TO STA. 1805+60  
 SCALE 1" = 400 FT.  
 OFFICE OF CHIEF ENGINEER.  
 CHICAGO, ILL.  
 SHEET NO. 9, OF 15, C. & N.W. RY.  
 FROM SURVEY STATION 1594+40  
 TO SURVEY STATION 1805+60  
 10 P. 3 S.  
 Validation Engineer



PLATTED - R.G.C. - DEC. 18, 1916  
 TRACKED - V.W.C. - JAN. 4, 1917  
 CHECKED - R.W.C. - JAN. 10, 1917



NO.	NAME	DATE
1	William Roberts	1891, 1892, 1893, 1894, 1895, 1896, 1897, 1898, 1899, 1900, 1901, 1902, 1903, 1904, 1905, 1906, 1907, 1908, 1909, 1910, 1911, 1912, 1913, 1914, 1915, 1916, 1917, 1918, 1919, 1920, 1921, 1922, 1923, 1924, 1925, 1926, 1927, 1928, 1929, 1930, 1931, 1932, 1933, 1934, 1935, 1936, 1937, 1938, 1939, 1940, 1941, 1942, 1943, 1944, 1945, 1946, 1947, 1948, 1949, 1950, 1951, 1952, 1953, 1954, 1955, 1956, 1957, 1958, 1959, 1960, 1961, 1962, 1963, 1964, 1965, 1966, 1967, 1968, 1969, 1970, 1971, 1972, 1973, 1974, 1975, 1976, 1977, 1978, 1979, 1980, 1981, 1982, 1983, 1984, 1985, 1986, 1987, 1988, 1989, 1990, 1991, 1992, 1993, 1994, 1995, 1996, 1997, 1998, 1999, 2000
2	Samuel A. Hale	

RIGHT OF WAY AND TRACK MAP  
 CHICAGO AND NORTH-WESTERN RAILWAY  
 OPERATED BY THE  
 C. & N.-W. RY. CO.  
 NORTHERN WISCONSIN DIVISION  
**FOND DU LAC, WIS. TO PRINCETON, WIS.**  
 STA. 1805+60 TO STA. 1867+80  
 SCALE 1-IN. = 400 FT.  
 OFFICE OF CHIEF ENGINEER,  
 CHICAGO, ILL.  
 JUNE 30, 1917.

