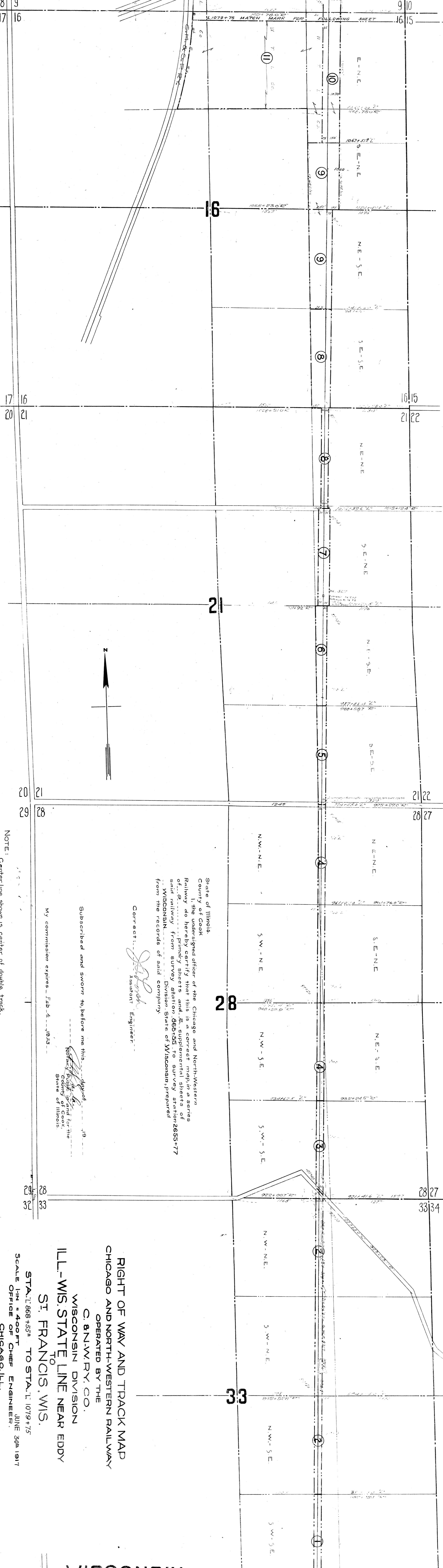


NO.	NAME	U. & St. Jan. Ry. Co.	DATE	BOOK	PAGE	RECORDED	AREA
1.	James Brown		May 11, 1897	55	489	July 1, 1905	8.37
2.	Thomas O'Brien		June 10, 1905	55	489	July 1, 1905	9.39
3.	James R. Jackson		June 10, 1905	55	489	July 1, 1905	2.75
4.	James R. Jackson		June 10, 1905	55	489	July 1, 1905	2.16
5.	James R. Jackson		June 10, 1905	55	489	July 1, 1905	4.48
6.	James R. Jackson		June 10, 1905	55	489	July 1, 1905	4.48
7.	James R. Jackson		June 10, 1905	55	489	July 1, 1905	4.48
8.	James R. Jackson		June 10, 1905	55	489	July 1, 1905	4.48
9.	James R. Jackson		June 10, 1905	55	489	July 1, 1905	11.44
10.	James R. Jackson		June 10, 1905	55	489	July 1, 1905	11.44
11.	James R. Jackson		June 10, 1905	55	489	July 1, 1905	52.00



State of Illinois  
 County of Cook  
 I, the undersigned officer of the Chicago and North-Western Railway do hereby certify that this is a correct map in a series of... primary sheets and... supplemental sheets of said railway from survey station 0663 to survey station 2655+77 WISCONSIN... Division, State of Wisconsin, prepared from the records of said company.

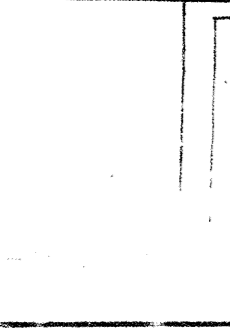
Correct: *[Signature]*  
 Assistant Engineer

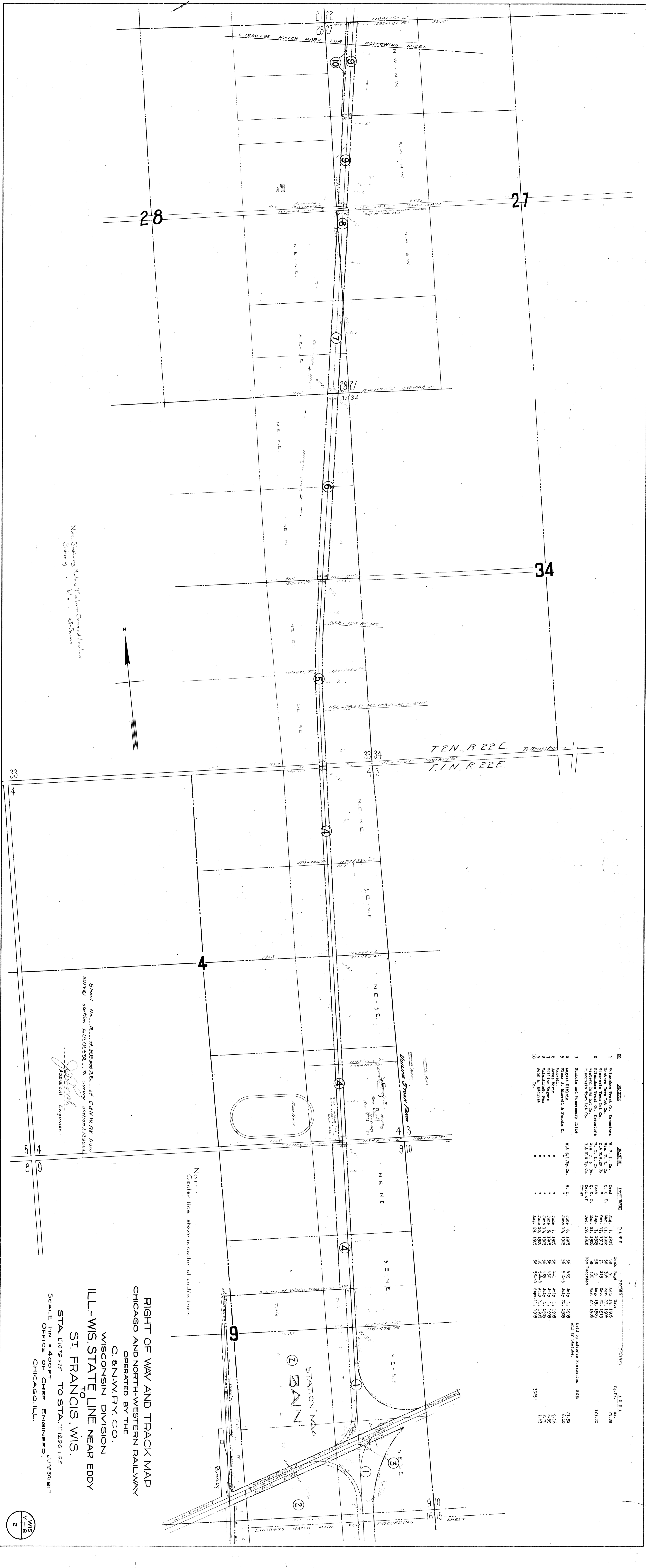
Subscribed and sworn to before me this... day of... 19...  
*[Signature]*  
 Notary Public for the State of Illinois

My commission expires Feb. 4, 1923.

RIGHT OF WAY AND TRACK MAP  
 CHICAGO AND NORTH-WESTERN RAILWAY  
 OPERATED BY THE  
 C. & N.W. RY. CO.  
 WISCONSIN DIVISION  
 ILL.-WIS. STATE LINE NEAR EDDY  
 TO  
 ST. FRANCIS, WIS.  
 STA. T. 868+55 TO STA. T. 1079+75  
 SCALE 1" = 400 FT  
 OFFICE OF CHIEF ENGINEER  
 JUNE 30th 1917  
 CHICAGO, ILL.

WISCONSIN  
 ILLINOIS





Note: Showing Method of showing from Original Location  
Showing



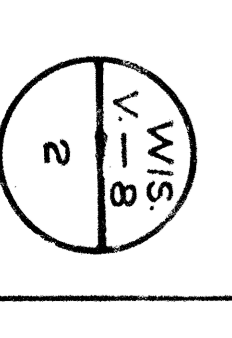
Sheet No. 2 of S.P. and 25 of C. & N.W. Ry. from  
survey station L. 1079+75 to survey station L. 1290+95

*W. J. Francis*  
Assistant Engineer

NOTE:  
Center line shown is center of double track.

NO.	EMPLOYER	DATE	BOOK	PAGE	DATE	REMARKS	AREA
1	W. J. Francis	Aug. 7, 1925	28	9	Aug. 17, 1925		21.28
2	Western Trust Co. Executors	Oct. 11, 1912	71	215	Nov. 20, 1913		23.00
3	Western Trust Co. Executors	Aug. 7, 1925	38	2	Aug. 19, 1925		
4	Western Trust Co. Executors	Mar. 23, 1928	No. Record		Apr. 21, 1928		
5	August Urban	June 6, 1925	489	3	July 1, 1925	Half of Acreage Reservation 8272	21.92
6	River A. Maxwell & Francis C.	June 10, 1925	50	3	July 21, 1925	Half of Acreage	6.10
7	William Rogers	June 7, 1925	45	46	July 1, 1925		6.39
8	William Rogers	June 10, 1925	45	46	July 1, 1925		7.15
9	William Rogers	June 10, 1925	45	46	July 1, 1925		7.15
10	William Rogers	Aug. 29, 1925	58	40	Sept. 11, 1925		7.15

RIGHT OF WAY AND TRACK MAP  
CHICAGO AND NORTH-WESTERN RAILWAY  
OPERATED BY THE  
C. & N.W. RY. CO.  
WISCONSIN DIVISION  
ILL.-WIS. STATE LINE NEAR EDDY  
TO  
ST. FRANCIS, WIS.  
STA. L. 1079+75 TO STA. L. 1290+95  
SCALE 1 IN = 400 FT.  
OFFICE OF CHIEF ENGINEER, JUNE 30, 1917  
CHICAGO, ILL.



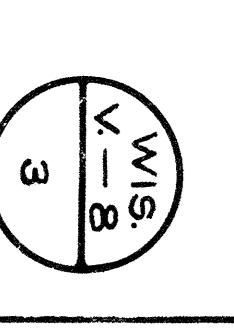


NOTE:  
Center line shown is center of double track.

**RIGHT OF WAY AND TRACK MAP**  
**CHICAGO AND NORTH-WESTERN RAILWAY**  
 OPERATED BY THE  
**C. & N.W. RY. CO.**  
 WISCONSIN DIVISION  
**ILL-WIS. STATE LINE NEAR EDDY**  
**ST. FRANCIS, WIS.**

STA. 1502+95 TO STA. 1502+15  
 SCALE 1"=400 FT.  
 OFFICE OF CHIEF ENGINEER  
 CHICAGO, ILL.  
 JUNE 30 1917

NO.	DATE	BY	FOR	REMARKS
1.	June 12, 1905	W. C. O'Grady, Sr. Quarterman	Survey of land for Chicago and North-Western Railway	
2.	June 13, 1905	W. C. O'Grady, Sr. Quarterman	Survey of land for Chicago and North-Western Railway	
3.	June 14, 1905	W. C. O'Grady, Sr. Quarterman	Survey of land for Chicago and North-Western Railway	
4.	June 15, 1905	W. C. O'Grady, Sr. Quarterman	Survey of land for Chicago and North-Western Railway	
5.	June 16, 1905	W. C. O'Grady, Sr. Quarterman	Survey of land for Chicago and North-Western Railway	
6.	June 17, 1905	W. C. O'Grady, Sr. Quarterman	Survey of land for Chicago and North-Western Railway	
7.	June 18, 1905	W. C. O'Grady, Sr. Quarterman	Survey of land for Chicago and North-Western Railway	
8.	June 19, 1905	W. C. O'Grady, Sr. Quarterman	Survey of land for Chicago and North-Western Railway	
9.	June 20, 1905	W. C. O'Grady, Sr. Quarterman	Survey of land for Chicago and North-Western Railway	
10.	June 21, 1905	W. C. O'Grady, Sr. Quarterman	Survey of land for Chicago and North-Western Railway	
11.	June 22, 1905	W. C. O'Grady, Sr. Quarterman	Survey of land for Chicago and North-Western Railway	
12.	June 23, 1905	W. C. O'Grady, Sr. Quarterman	Survey of land for Chicago and North-Western Railway	
13.	June 24, 1905	W. C. O'Grady, Sr. Quarterman	Survey of land for Chicago and North-Western Railway	
14.	June 25, 1905	W. C. O'Grady, Sr. Quarterman	Survey of land for Chicago and North-Western Railway	
15.	June 26, 1905	W. C. O'Grady, Sr. Quarterman	Survey of land for Chicago and North-Western Railway	
16.	June 27, 1905	W. C. O'Grady, Sr. Quarterman	Survey of land for Chicago and North-Western Railway	
17.	June 28, 1905	W. C. O'Grady, Sr. Quarterman	Survey of land for Chicago and North-Western Railway	
18.	June 29, 1905	W. C. O'Grady, Sr. Quarterman	Survey of land for Chicago and North-Western Railway	
19.	June 30, 1905	W. C. O'Grady, Sr. Quarterman	Survey of land for Chicago and North-Western Railway	
20.	July 1, 1905	W. C. O'Grady, Sr. Quarterman	Survey of land for Chicago and North-Western Railway	
21.	July 2, 1905	W. C. O'Grady, Sr. Quarterman	Survey of land for Chicago and North-Western Railway	
22.	July 3, 1905	W. C. O'Grady, Sr. Quarterman	Survey of land for Chicago and North-Western Railway	





NO.	SECTION	DATE	REMARKS	AREA
1.	Thomas W. Davis	June 18, 1905	117	572
2.	Carl W. Peterson	June 27, 1905	117	522
3.	Henry Meyer, Jr.	July 27, 1905	117	522
4.	Henry Meyer, Sr.	July 27, 1905	117	522
5.	Brown Cattle Raising Co.	July 27, 1905	117	522
6.	T. S. Willey	July 27, 1905	117	522
7.	Samuel Scholfield	July 27, 1905	117	522
8.	C. W. & S. P. Ry. Co.	July 27, 1905	117	522
9.	Henry F. Harbeck	July 27, 1905	117	522
10.	Henry F. Harbeck	July 27, 1905	117	522
11.	Henry J. Evans	July 27, 1905	117	522
12.	Henry J. Evans	July 27, 1905	117	522
13.	Elizabeth Evans	July 27, 1905	117	522
14.	Elizabeth Evans	July 27, 1905	117	522
15.	David G. Jones, Sr. Guardian	July 27, 1905	117	522

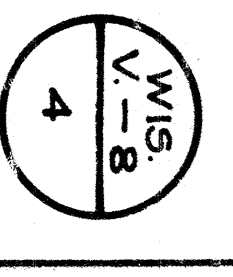
NOTE:  
Center line shown is center of double track.

Sheet No. 4 of Grand ss. of C&N.W. Ry. from  
survey station T. 1502+15 to survey station T. 1713+35

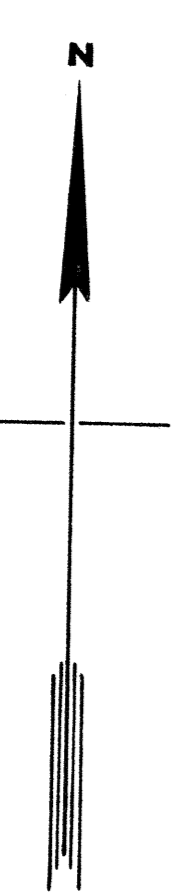
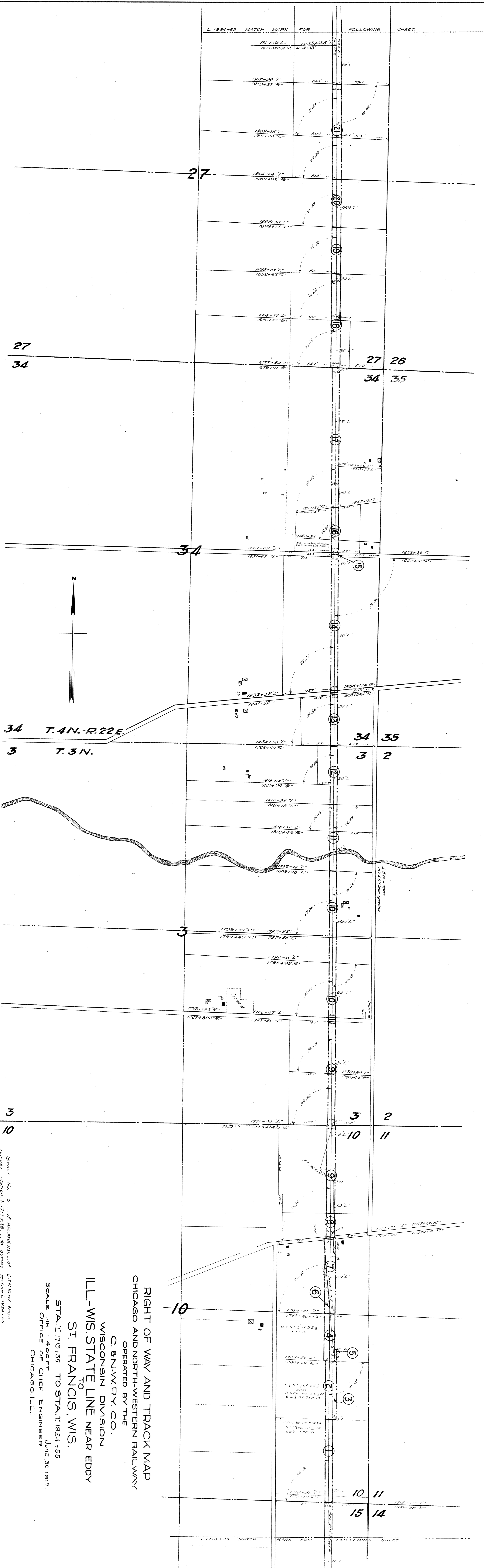
Assistant Engineer

RIGHT OF WAY AND TRACK MAP  
CHICAGO AND NORTH-WESTERN RAILWAY  
OPERATED BY THE  
C. & N.W. RY. CO.  
WISCONSIN DIVISION  
ILL.-WIS. STATE LINE NEAR EDDY  
TO  
ST. FRANCIS, WIS.

STA. T. 1502+15 TO STA. T. 1713+35  
SCALE 1 IN = 400 FT  
OFFICE OF CHIEF ENGINEER  
JUNE 30 1917  
CHICAGO, ILL.



L. 1924+55 MATCH MARK FOR FOLLOWING SHEET



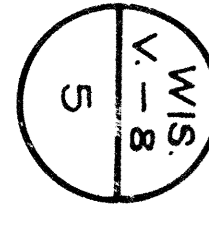
34 T. 4N. R. 22E.  
3 T. 3N.

NOTE: Center line shown is center of double track.

Sheet No. 5 of 39 and 28 of C&N.W.R.R. from survey station L. 1713+35 to survey station L. 1924+55

**RIGHT OF WAY AND TRACK MAP**  
**CHICAGO AND NORTH-WESTERN RAILWAY**  
OPERATED BY THE  
**C. & N.W.R.R. CO.**  
WISCONSIN DIVISION  
**ILL.-WIS. STATE LINE NEAR EDDY**  
TO  
**ST. FRANCIS, WIS.**  
STA. 1713+35 TO STA. 1924+55  
SCALE 1/4" = 400 FT. June 30 1917.  
OFFICE OF CHIEF ENGINEER  
CHICAGO, ILL.

NO.	DESCRIPTION	DATES	BOOK	PAGE	RECORDS	REMARKS	DATE	SCALE
1.	Leo J. Lohmer	July 3, 1905	117	613	July 25, 1905	1.15	1905	1.15
2.	Samuel Stetson	July 3, 1905	117	871	July 25, 1905	1.15	1905	1.15
3.	Ernest T. Doe	July 3, 1905	117	871	July 25, 1905	1.15	1905	1.15
4.	Ernest T. Doe	July 3, 1905	117	613	July 25, 1905	1.15	1905	1.15
5.	Ernest T. Doe	July 3, 1905	117	871	July 25, 1905	1.15	1905	1.15
6.	Ernest T. Doe	July 3, 1905	117	613	July 25, 1905	1.15	1905	1.15
7.	Ernest T. Doe	July 3, 1905	117	871	July 25, 1905	1.15	1905	1.15
8.	Ernest T. Doe	July 3, 1905	117	613	July 25, 1905	1.15	1905	1.15
9.	Ernest T. Doe	July 3, 1905	117	871	July 25, 1905	1.15	1905	1.15
10.	Ernest T. Doe	July 3, 1905	117	613	July 25, 1905	1.15	1905	1.15
11.	Ernest T. Doe	July 3, 1905	117	871	July 25, 1905	1.15	1905	1.15
12.	Ernest T. Doe	July 3, 1905	117	613	July 25, 1905	1.15	1905	1.15
13.	Ernest T. Doe	July 3, 1905	117	871	July 25, 1905	1.15	1905	1.15
14.	Ernest T. Doe	July 3, 1905	117	613	July 25, 1905	1.15	1905	1.15
15.	Ernest T. Doe	July 3, 1905	117	871	July 25, 1905	1.15	1905	1.15
16.	Ernest T. Doe	July 3, 1905	117	613	July 25, 1905	1.15	1905	1.15
17.	Ernest T. Doe	July 3, 1905	117	871	July 25, 1905	1.15	1905	1.15
18.	Ernest T. Doe	July 3, 1905	117	613	July 25, 1905	1.15	1905	1.15
19.	Ernest T. Doe	July 3, 1905	117	871	July 25, 1905	1.15	1905	1.15
20.	Ernest T. Doe	July 3, 1905	117	613	July 25, 1905	1.15	1905	1.15
21.	Ernest T. Doe	July 3, 1905	117	871	July 25, 1905	1.15	1905	1.15



RACINE CO.

T. 4 N.

3 2

L. 2135+75 MATCH MARK FOR FOLLOWING SHEET



NOTE:  
Center line shown is center of double track.

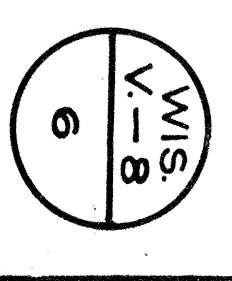
NO.	DATE	BY	REMARKS
1.	July 1, 1905	Edw. J. Smith	Initial
2.	July 1, 1905	Edw. J. Smith	Initial
3.	July 1, 1905	Edw. J. Smith	Initial
4.	July 1, 1905	Edw. J. Smith	Initial
5.	July 1, 1905	Edw. J. Smith	Initial
6.	July 1, 1905	Edw. J. Smith	Initial
7.	July 1, 1905	Edw. J. Smith	Initial
8.	July 1, 1905	Edw. J. Smith	Initial
9.	July 1, 1905	Edw. J. Smith	Initial
10.	July 1, 1905	Edw. J. Smith	Initial
11.	July 1, 1905	Edw. J. Smith	Initial
12.	July 1, 1905	Edw. J. Smith	Initial
13.	July 1, 1905	Edw. J. Smith	Initial
14.	July 1, 1905	Edw. J. Smith	Initial
15.	July 1, 1905	Edw. J. Smith	Initial
16.	July 1, 1905	Edw. J. Smith	Initial
17.	July 1, 1905	Edw. J. Smith	Initial
18.	July 1, 1905	Edw. J. Smith	Initial

Sheet No. 6 of 92 and 23 of C. & N. W. RY from  
survey station L. 1924+55 to survey station L. 1939+75

Assistant Engineer

RIGHT OF WAY AND TRACK MAP  
CHICAGO AND NORTH-WESTERN RAILWAY  
OPERATED BY THE  
C. & N. W. RY. CO.  
WISCONSIN DIVISION  
ILL.-WIS. STATE LINE NEAR EDDY  
ST. FRANCIS, WIS.

STA. L. 1924+55 TO STA. L. 2135+75  
SCALE 1 IN. = 400 FT.  
OFFICE OF CHIEF ENGINEER  
JUNE 30 1917  
CHICAGO, ILL.





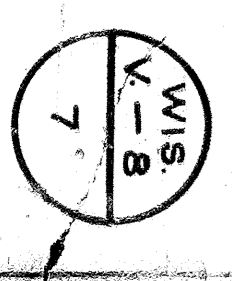
NOTE:  
Center line shown is center of double track.

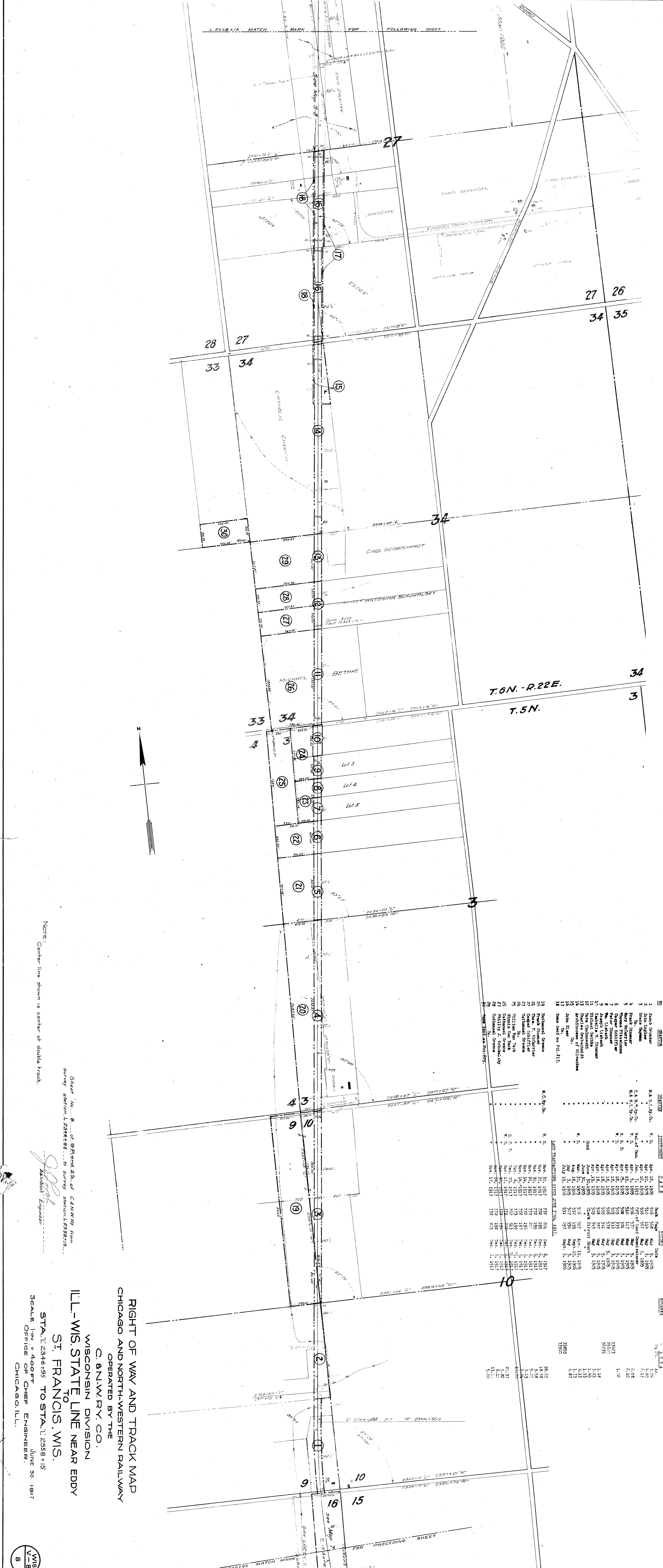
Sheet No. 7 - of 9B and 2B, of C & N.W. Ry. from  
survey station L. 2135+75 to survey station L. 2346+95.

Assistant Engineer

RIGHT OF WAY AND TRACK MAP  
CHICAGO AND NORTH-WESTERN RAILWAY  
OPERATED BY THE  
C. & N.W. RY. CO.  
WISCONSIN DIVISION  
ILL-WIS. STATE LINE NEAR EDDY  
ST. FRANCIS, WIS.  
STA. L. 2135+75 TO STA. L. 2346+95  
SCALE 1/4" = 40 FT. ENGINEER  
JUNE 30 1917.  
CHICAGO, ILL.

No.	Name	Acres	St. Line Ry. Co.	Acres	St. Line Ry. Co.	Acres	St. Line Ry. Co.	Acres	St. Line Ry. Co.
1	Julius Seyferth	110	St. Line Ry. Co.	110	St. Line Ry. Co.	110	St. Line Ry. Co.	110	St. Line Ry. Co.
2	John A. ...	100	St. Line Ry. Co.	100	St. Line Ry. Co.	100	St. Line Ry. Co.	100	St. Line Ry. Co.
3	Herbert Vanalstine	508	St. Line Ry. Co.	508	St. Line Ry. Co.	508	St. Line Ry. Co.	508	St. Line Ry. Co.
4	Herbert Vanalstine	508	St. Line Ry. Co.	508	St. Line Ry. Co.	508	St. Line Ry. Co.	508	St. Line Ry. Co.
5	Outawa Vanalstine	508	St. Line Ry. Co.	508	St. Line Ry. Co.	508	St. Line Ry. Co.	508	St. Line Ry. Co.
6	Outawa Vanalstine	508	St. Line Ry. Co.	508	St. Line Ry. Co.	508	St. Line Ry. Co.	508	St. Line Ry. Co.
7	Outawa Vanalstine	508	St. Line Ry. Co.	508	St. Line Ry. Co.	508	St. Line Ry. Co.	508	St. Line Ry. Co.
8	Outawa Vanalstine	508	St. Line Ry. Co.	508	St. Line Ry. Co.	508	St. Line Ry. Co.	508	St. Line Ry. Co.
9	Outawa Vanalstine	508	St. Line Ry. Co.	508	St. Line Ry. Co.	508	St. Line Ry. Co.	508	St. Line Ry. Co.
10	Outawa Vanalstine	508	St. Line Ry. Co.	508	St. Line Ry. Co.	508	St. Line Ry. Co.	508	St. Line Ry. Co.
11	Outawa Vanalstine	508	St. Line Ry. Co.	508	St. Line Ry. Co.	508	St. Line Ry. Co.	508	St. Line Ry. Co.
12	Outawa Vanalstine	508	St. Line Ry. Co.	508	St. Line Ry. Co.	508	St. Line Ry. Co.	508	St. Line Ry. Co.
13	Outawa Vanalstine	508	St. Line Ry. Co.	508	St. Line Ry. Co.	508	St. Line Ry. Co.	508	St. Line Ry. Co.
14	Outawa Vanalstine	508	St. Line Ry. Co.	508	St. Line Ry. Co.	508	St. Line Ry. Co.	508	St. Line Ry. Co.
15	Outawa Vanalstine	508	St. Line Ry. Co.	508	St. Line Ry. Co.	508	St. Line Ry. Co.	508	St. Line Ry. Co.
16	Outawa Vanalstine	508	St. Line Ry. Co.	508	St. Line Ry. Co.	508	St. Line Ry. Co.	508	St. Line Ry. Co.
17	Outawa Vanalstine	508	St. Line Ry. Co.	508	St. Line Ry. Co.	508	St. Line Ry. Co.	508	St. Line Ry. Co.
18	Outawa Vanalstine	508	St. Line Ry. Co.	508	St. Line Ry. Co.	508	St. Line Ry. Co.	508	St. Line Ry. Co.
19	Outawa Vanalstine	508	St. Line Ry. Co.	508	St. Line Ry. Co.	508	St. Line Ry. Co.	508	St. Line Ry. Co.
20	Outawa Vanalstine	508	St. Line Ry. Co.	508	St. Line Ry. Co.	508	St. Line Ry. Co.	508	St. Line Ry. Co.
21	Outawa Vanalstine	508	St. Line Ry. Co.	508	St. Line Ry. Co.	508	St. Line Ry. Co.	508	St. Line Ry. Co.
22	Outawa Vanalstine	508	St. Line Ry. Co.	508	St. Line Ry. Co.	508	St. Line Ry. Co.	508	St. Line Ry. Co.

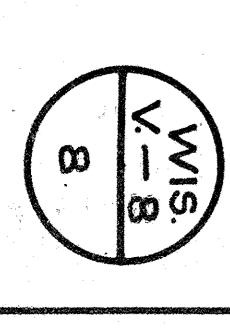




NO.	NAME	DATE	RECORD	REMARKS
1	John Gendler	Apr. 12, 1895	506	May 3, 1895
2	John Taylor	Apr. 12, 1895	510	May 3, 1895
3	Grace Boyman	Apr. 12, 1895	508	May 3, 1895
4	Frank DeWitt	Apr. 12, 1895	506	May 3, 1895
5	Mary McCarroll	Apr. 12, 1895	510	May 3, 1895
6	Thomas P. P. P.	Apr. 12, 1895	508	May 3, 1895
7	Peter P. P.	Apr. 12, 1895	506	May 3, 1895
8	John P. P.	Apr. 12, 1895	510	May 3, 1895
9	John P. P.	Apr. 12, 1895	508	May 3, 1895
10	John P. P.	Apr. 12, 1895	506	May 3, 1895
11	John P. P.	Apr. 12, 1895	510	May 3, 1895
12	John P. P.	Apr. 12, 1895	508	May 3, 1895
13	John P. P.	Apr. 12, 1895	506	May 3, 1895
14	John P. P.	Apr. 12, 1895	510	May 3, 1895
15	John P. P.	Apr. 12, 1895	508	May 3, 1895
16	John P. P.	Apr. 12, 1895	506	May 3, 1895
17	John P. P.	Apr. 12, 1895	510	May 3, 1895
18	John P. P.	Apr. 12, 1895	508	May 3, 1895
19	John P. P.	Apr. 12, 1895	506	May 3, 1895
20	John P. P.	Apr. 12, 1895	510	May 3, 1895
21	John P. P.	Apr. 12, 1895	508	May 3, 1895
22	John P. P.	Apr. 12, 1895	506	May 3, 1895
23	John P. P.	Apr. 12, 1895	510	May 3, 1895
24	John P. P.	Apr. 12, 1895	508	May 3, 1895
25	John P. P.	Apr. 12, 1895	506	May 3, 1895
26	John P. P.	Apr. 12, 1895	510	May 3, 1895
27	John P. P.	Apr. 12, 1895	508	May 3, 1895
28	John P. P.	Apr. 12, 1895	506	May 3, 1895
29	John P. P.	Apr. 12, 1895	510	May 3, 1895
30	John P. P.	Apr. 12, 1895	508	May 3, 1895

NOTE: Center line shown is center of double track.

RIGHT OF WAY AND TRACK MAP  
CHICAGO AND NORTH-WESTERN RAILWAY  
OPERATED BY THE  
C. & N.W. RY. CO.  
WISCONSIN DIVISION  
ILL.-WIS. STATE LINE NEAR EDDY  
TO  
ST. FRANCIS, WIS.  
STA. T. 2346+95 TO STA. T. 2558+15  
SCALE 1" = 400 FT.  
OFFICE OF CHIEF ENGINEER  
JUNE 30 1917  
CHICAGO, ILL.







NO.	NAME	DATE	REMARKS
1.	Ellen Powers	Apr. 5, 1893	Office of Public Survey
2.	Tom Board, Jr. of Lake	Apr. 5, 1893	Office of Public Survey
3.	Thomas Board	Apr. 5, 1893	Office of Public Survey
4.	Elizabeth Jordan	Apr. 5, 1893	Office of Public Survey
5.	John P. Ryan	Apr. 5, 1893	Office of Public Survey
6.	John P. Ryan	Apr. 5, 1893	Office of Public Survey
7.	John P. Ryan	Apr. 5, 1893	Office of Public Survey
8.	John P. Ryan	Apr. 5, 1893	Office of Public Survey
9.	John P. Ryan	Apr. 5, 1893	Office of Public Survey
10.	John P. Ryan	Apr. 5, 1893	Office of Public Survey
11.	John P. Ryan	Apr. 5, 1893	Office of Public Survey
12.	John P. Ryan	Apr. 5, 1893	Office of Public Survey
13.	John P. Ryan	Apr. 5, 1893	Office of Public Survey
14.	John P. Ryan	Apr. 5, 1893	Office of Public Survey
15.	John P. Ryan	Apr. 5, 1893	Office of Public Survey
16.	John P. Ryan	Apr. 5, 1893	Office of Public Survey
17.	John P. Ryan	Apr. 5, 1893	Office of Public Survey
18.	John P. Ryan	Apr. 5, 1893	Office of Public Survey
19.	John P. Ryan	Apr. 5, 1893	Office of Public Survey

Sheet No. 9 of Grand 25 of C&N.W. Ry from survey station L. 2558+15 to survey station L. 2655+770

Assistant Engineer

NOTE: Center line shown is center of double track.

RIGHT OF WAY AND TRACK MAP  
CHICAGO AND NORTH-WESTERN RAILWAY  
OPERATED BY THE  
C. & N. W. RY. CO.  
WISCONSIN DIVISION  
ILL.-WIS. STATE LINE NEAR EDDY  
TO  
ST. FRANCIS, WIS.  
ST. AL. 2558+15 TO ST. AL. 2655+770  
SCALE 1 IN = 400 FT  
OFFICE OF CHIEF ENGINEER  
JUNE 30 1917  
CHICAGO, ILL.

Center Line shown is center of Double Track.

