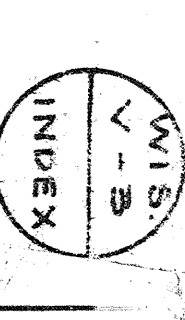
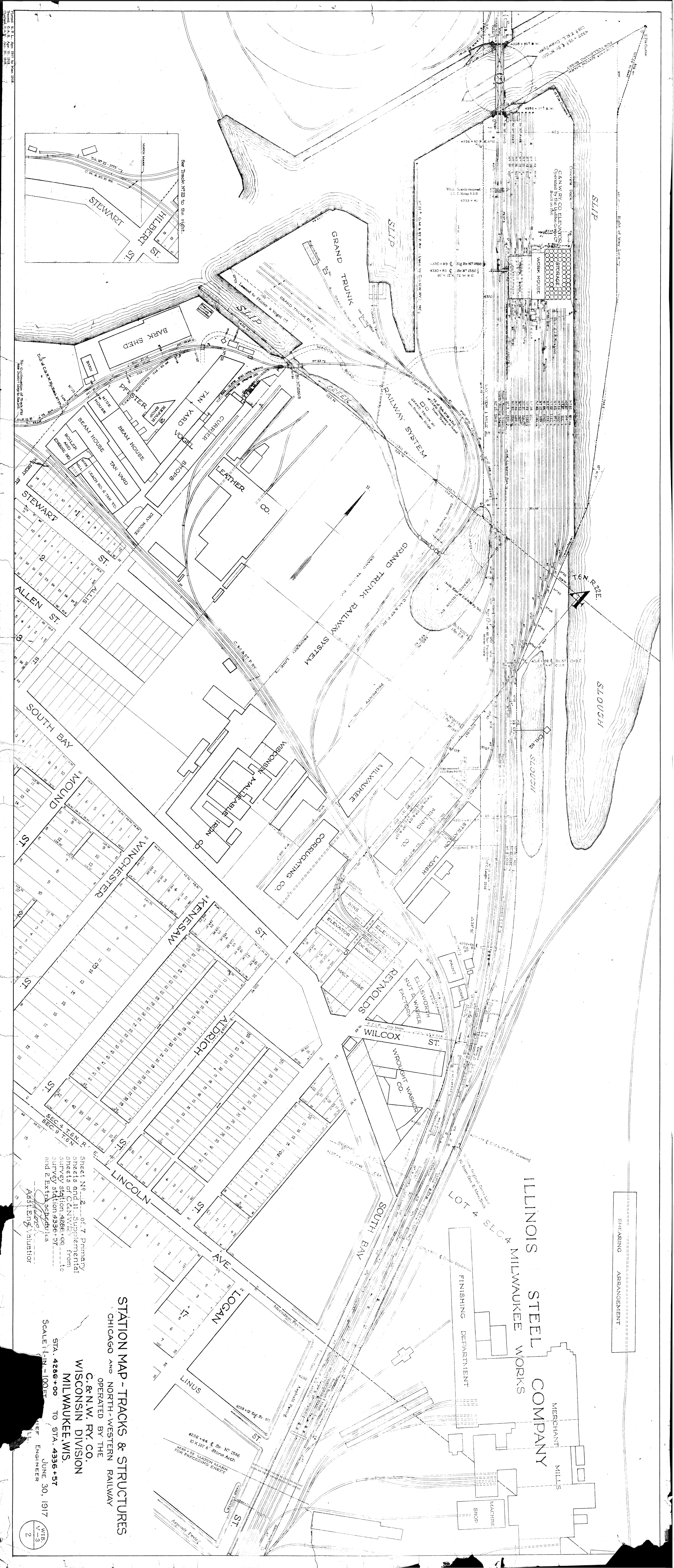


Sheet No. 11, Supplemental  
 sheets of C&N.W.R. from  
 survey station 4234+83 to  
 and extra 200 ft. dikes  
 Asst. Eng. Valuation

**INDEX MAP**  
 CHICAGO & NORTH-WESTERN RAILWAY  
 OPERATED BY THE  
 C. & N. W. RY. CO.  
 WISCONSIN DIVISION  
 MILWAUKEE, WIS.  
 STA. 4234+83 TO STA. 4609+68  
 SCALE: 1 IN = 100'  
 OFFICE OF CHIEF ENGINEER  
 JUNE 30, 1917  
 CHICAGO, ILL.







SHEARING ARRANGEMENT

ILLINOIS STEEL COMPANY  
MILWAUKEE WORKS

FINISHING DEPARTMENT

WROUGHT WASHERS

WILCOX ST.

REYNOLDS

ELEVATOR

CORRUGATING CO.

MILWAUKEE

WISCONSIN MALLEABLE IRON CO.

WINCHESTER

SOUTH BAY

ALLEN ST.

STEWART

BEAM HOUSE

GRAND TRUNK RAILWAY SYSTEM

GRAND TRUNK RAILWAY SYSTEM

GRAND TRUNK RAILWAY SYSTEM

STEWART

HILBERG ST.

ST. CLAIR

**STATION MAP - TRACKS & STRUCTURES**  
CHICAGO AND NORTH-WESTERN RAILWAY  
OPERATED BY THE  
C. & N. W. RY. CO.  
WISCONSIN DIVISION  
MILWAUKEE, WIS.

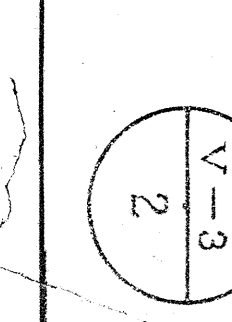
Sheet No. 2 of 7 Primary  
sheets and 11 Supplemental  
sheets of C. & N. W. RY.  
survey station 4286+00  
to  
survey station 4336+57  
and 2 Extra schedules

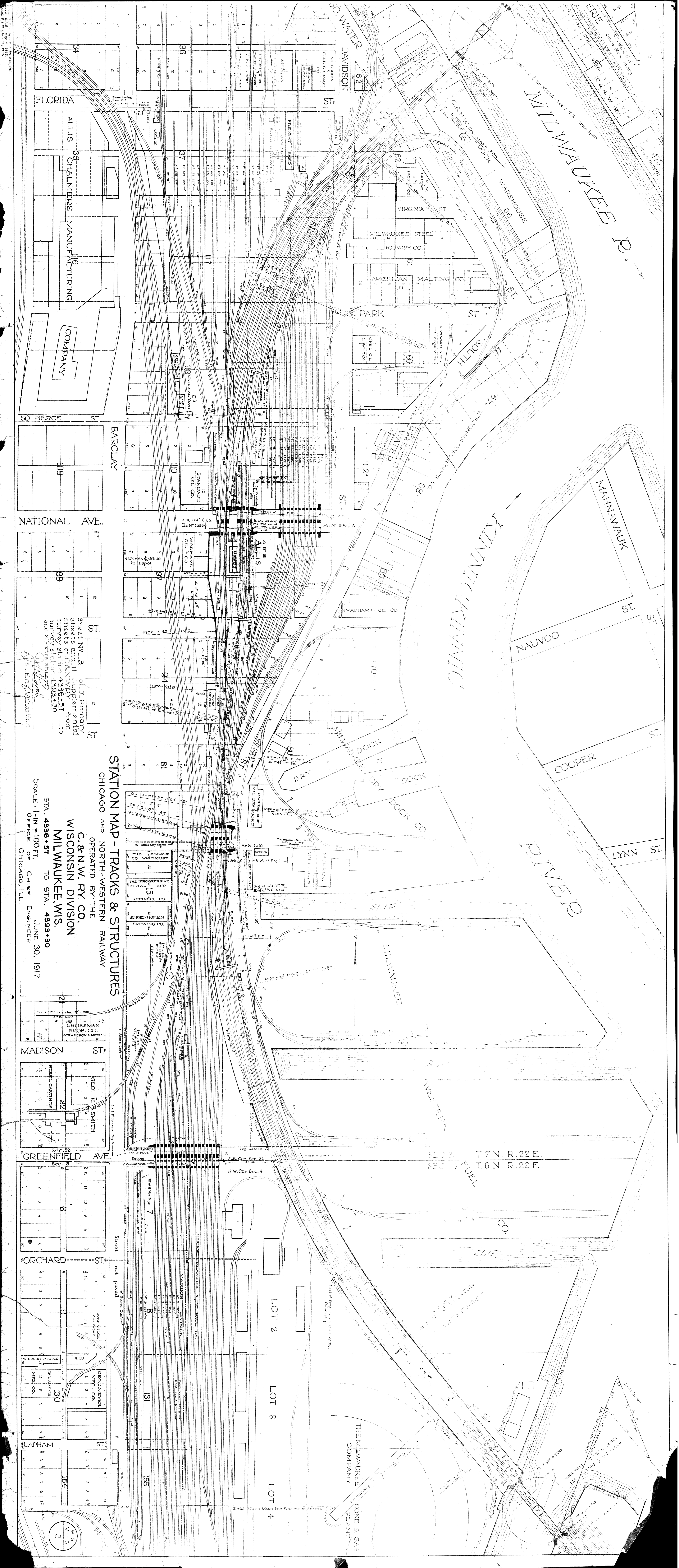
SCALE: 1" = 100 FT.

STA. 4286+00 TO STA. 4336+57

JUNE 30, 1917

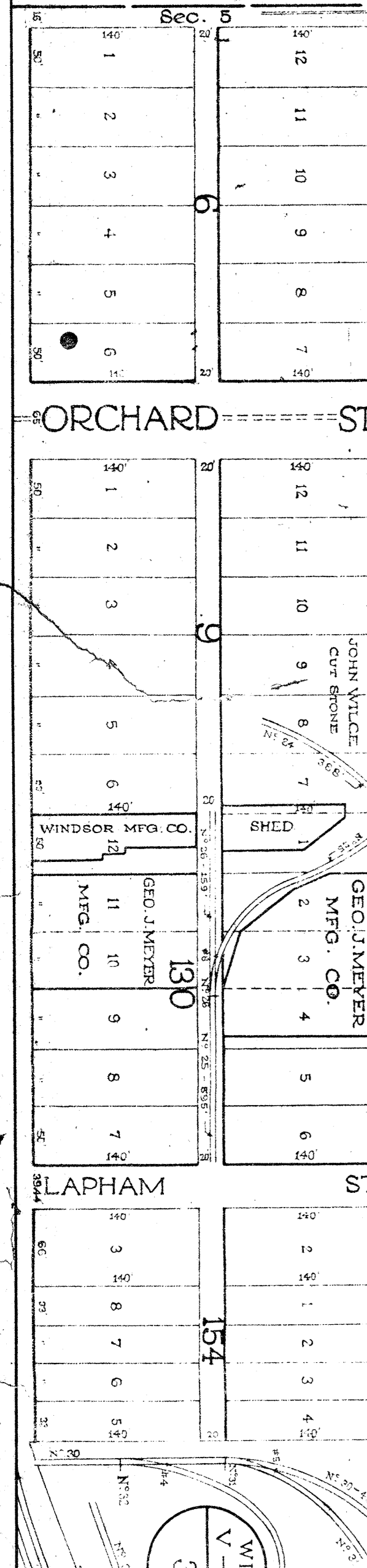
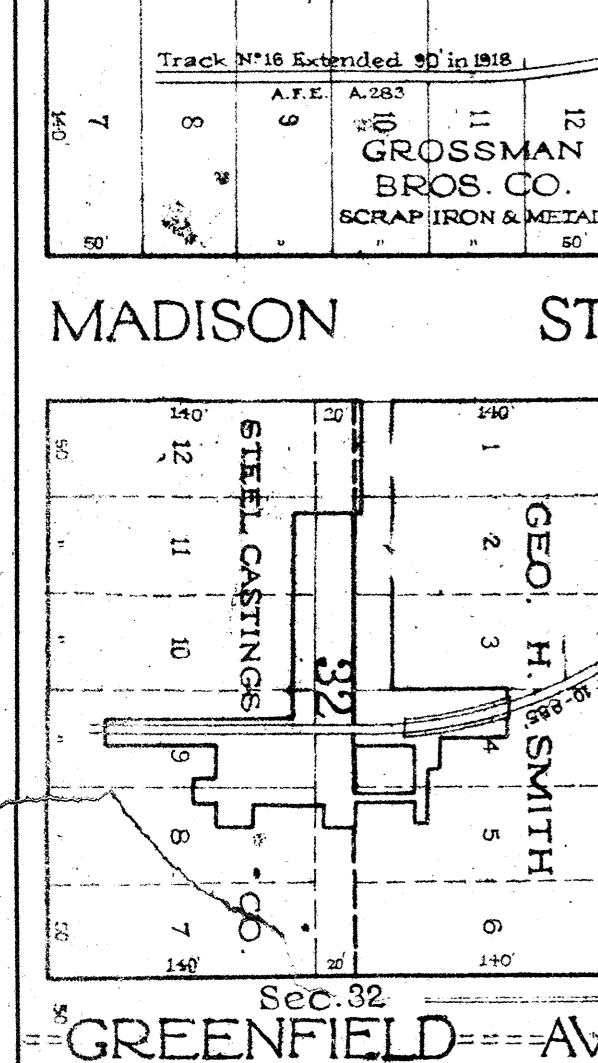
ENGINEER





**STATION MAP - TRACKS & STRUCTURES**  
 CHICAGO AND NORTH-WESTERN RAILWAY  
 OPERATED BY THE  
 C. & N. W. RY. CO.  
 WISCONSIN DIVISION  
 MILWAUKEE, WIS.

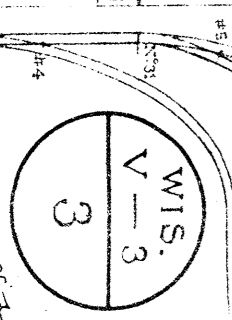
Sheet No. 3 of 7 Primary  
 sheets and 11 Supplemental  
 sheets of C. & N. W. RY. CO.  
 survey station 4336+57  
 to 4393+30  
 and 4393+30  
 C. S. Eng. Station  
 STA. 4336+57 TO STA. 4393+30  
 SCALE: 1" = 100 FT.  
 JUNE 30, 1917  
 OFFICE OF CHIEF ENGINEER  
 CHICAGO, ILL.



750 S. T. 7 N. R. 22 E.  
 SEC. 4 T. 6 N. R. 22 E.

LOT 2  
 LOT 3  
 LOT 4

THE MILWAUKEE  
 COKE & GAS  
 PLANT



LOT 4  
LOT 5  
LOT 7  
LOT 8  
LOT 9

THOMAS FURNACE CO.  
MILWAUKEE WESTERN COAL SHED

STEWART ST.  
M.V.F. CO.

ROBINSON AVE.  
WARD ST.

SMITH ST.  
CLARENCE ST.

BURRELL ST.  
GREILEY ST.

CHASE ST.

KINNICKINNIC ST.  
T.M.E.R. & L. CO. CAR BARN

CLINTON ST.  
WYNOBLES ST.  
WINE ST.W.C. LUBBE COAL CO. SUBDIVISION

HOFFMAN & BILLINGS COMPANY  
ELECT. SUPPLY CO.  
Sign "Empire"

HACKNEY ST.  
VILTOR MANUFACTURING COMPANY  
VILTOR MANUFACTURING COMPANY  
VILTOR MANUFACTURING COMPANY

VALLEY ROAD  
A  
B  
C  
D  
E  
F  
G  
H

NORTHERN GLASS CO.  
CLARENCE ST.

DEER  
A  
B  
C  
D  
E  
F  
G  
H  
I  
J  
K

CLINTON ST.  
SANDS LUMBER CO.

PROPOSED TURNING BASIN  
N. 69° 08' 10" E. 92.5'  
N. 1° 03' 19" E. 432'  
S. 87° 29' 07" W. 1114'

NATIONAL KNITTING CO.  
VILTOR MANUFACTURING COMPANY  
Established Dock Line

VALLEY ROAD  
A  
B  
C  
D  
E  
F  
G  
H

NORTHERN GLASS CO.  
CLARENCE ST.

HANOVER  
1  
2  
3  
4  
5  
6  
7  
8  
9  
10  
11  
12  
13  
14  
15  
16  
17  
18  
19  
20

CLINTON ST.  
SANDS LUMBER CO.

PROPOSED TURNING BASIN  
N. 69° 08' 10" E. 92.5'  
N. 1° 03' 19" E. 432'  
S. 87° 29' 07" W. 1114'

NATIONAL KNITTING CO.  
VILTOR MANUFACTURING COMPANY  
Established Dock Line

VALLEY ROAD  
A  
B  
C  
D  
E  
F  
G  
H

NORTHERN GLASS CO.  
CLARENCE ST.

MITCHELL  
1  
2  
3  
4  
5  
6  
7  
8  
9  
10  
11  
12  
13  
14  
15  
16  
17  
18  
19  
20

CLINTON ST.  
SANDS LUMBER CO.

PROPOSED TURNING BASIN  
N. 69° 08' 10" E. 92.5'  
N. 1° 03' 19" E. 432'  
S. 87° 29' 07" W. 1114'

NATIONAL KNITTING CO.  
VILTOR MANUFACTURING COMPANY  
Established Dock Line

VALLEY ROAD  
A  
B  
C  
D  
E  
F  
G  
H

NORTHERN GLASS CO.  
CLARENCE ST.

GREENBUSH  
1  
2  
3  
4  
5  
6  
7  
8  
9  
10  
11  
12  
13  
14  
15  
16  
17  
18  
19  
20

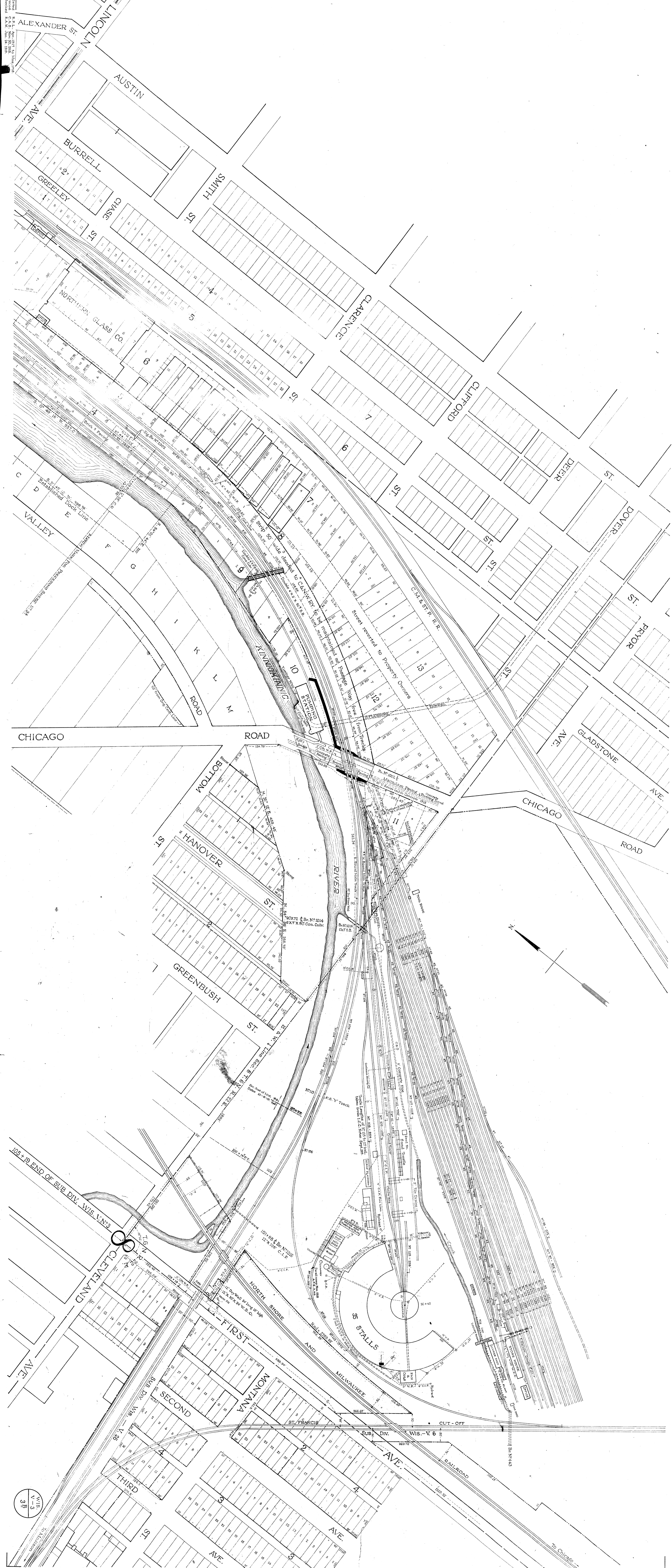
CLINTON ST.  
SANDS LUMBER CO.

PROPOSED TURNING BASIN  
N. 69° 08' 10" E. 92.5'  
N. 1° 03' 19" E. 432'  
S. 87° 29' 07" W. 1114'

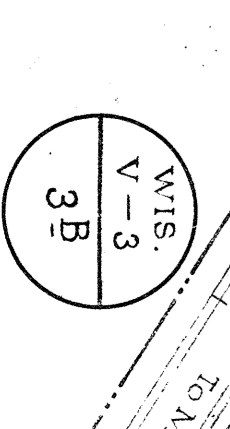
NATIONAL KNITTING CO.  
VILTOR MANUFACTURING COMPANY  
Established Dock Line

VALLEY ROAD  
A  
B  
C  
D  
E  
F  
G  
H

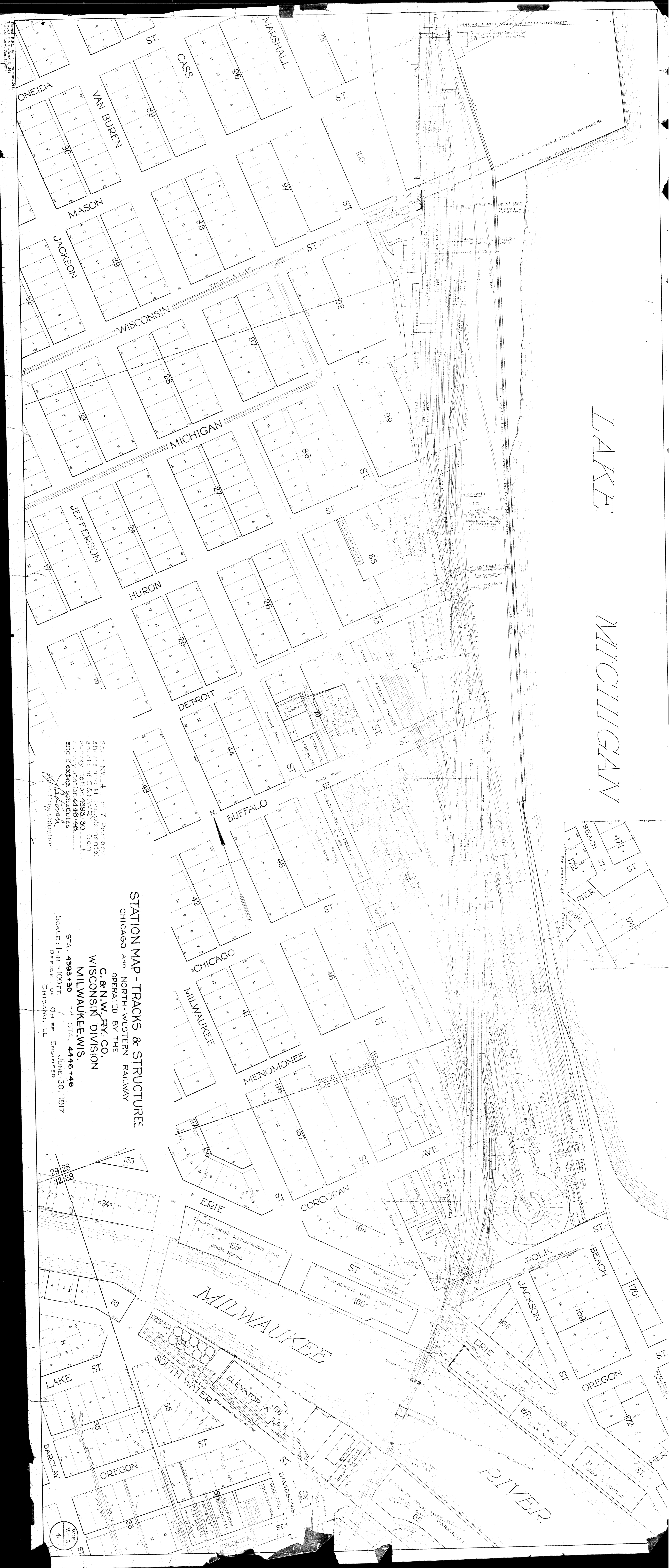
NORTHERN GLASS CO.  
CLARENCE ST.



Copyright 1910 by the City of Chicago  
Revised 1911  
Scale 1" = 100'



# LAKE MICHIGAN



STATION MAP - TRACKS & STRUCTURES  
CHICAGO AND NORTH-WESTERN RAILWAY  
OPERATED BY THE  
C. & N. W. RY. CO.  
WISCONSIN DIVISION  
MILWAUKEE, WIS.

Sheet No. 4 of 7 Primary  
sheets and 11 Supplemental  
sheets of C. & N. W. RY.  
survey station 4393+30  
and 4446+46  
and 2 extra supplements  
J. H. H. H.  
City Engineer

SCALE: 1 IN. = 100 FT.  
OFFICE OF CHIEF ENGINEER  
CHICAGO, ILL.  
JUNE 30, 1917  
STA. 4393+30 TO STA. 4446+46

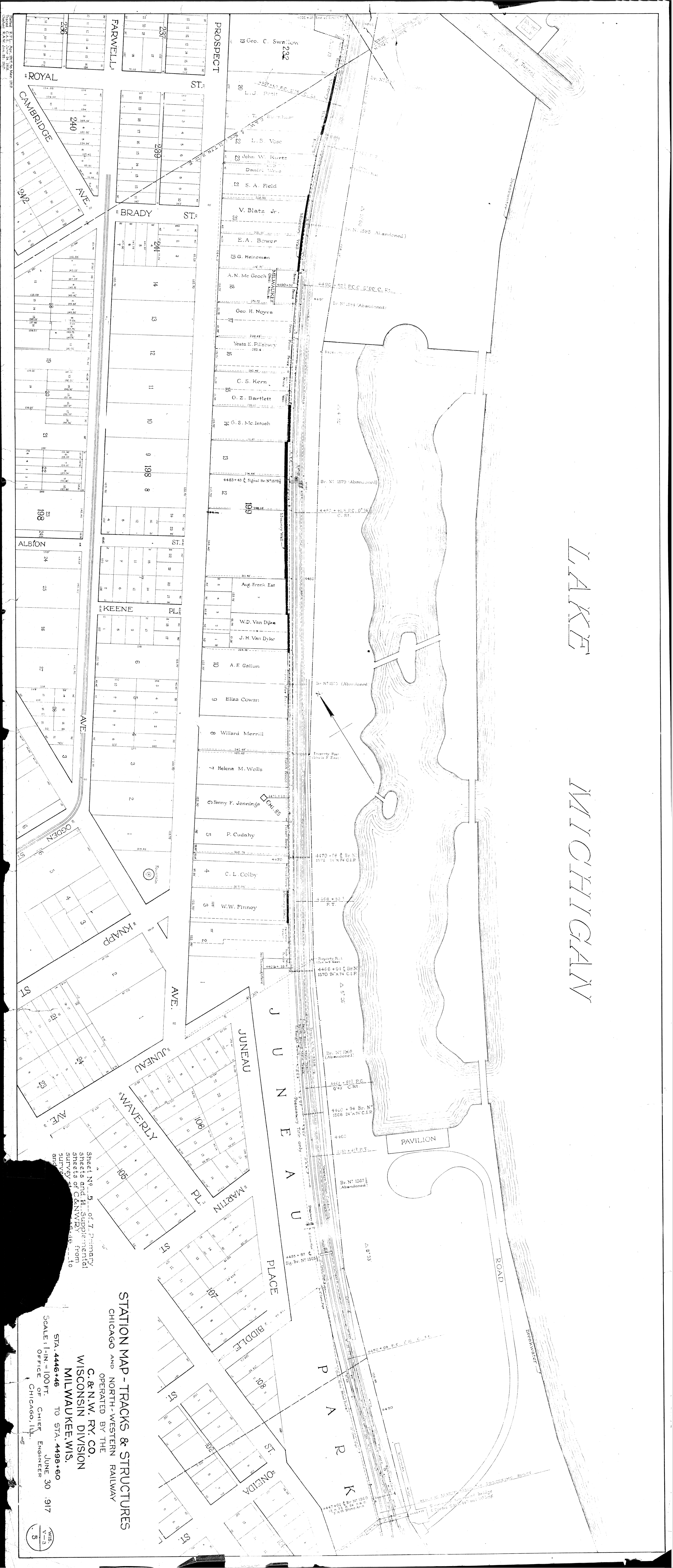
ONEIDA ST.  
VAN BUREN ST.  
MASON ST.  
JACKSON ST.  
WISCONSIN ST.  
MICHIGAN ST.  
JEFFERSON ST.  
HURON ST.  
DETROIT ST.  
BUFFALO ST.  
CHICAGO ST.  
MILWAUKEE ST.  
MENOMONEE ST.  
ERIE ST.  
CORCORAN ST.  
MILWAUKEE ST.  
LAKE ST.  
BARCLAY ST.  
OREGON ST.  
FLORIDA ST.

BEACH ST.  
PIER ST.  
ERIE ST.  
POLK ST.  
JACKSON ST.  
ERIE ST.  
OREGON ST.  
PIER ST.

MILWAUKEE RIVER

WIS. V-3  
4

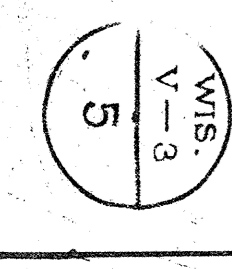
# LAKES MICHIGAN



STATION MAP - TRACKS & STRUCTURES  
CHICAGO AND NORTH-WESTERN RAILWAY

OPERATED BY THE  
C. & N. W. RY. CO.  
WISCONSIN DIVISION  
MILWAUKEE, WIS.

Sheet No. 5 of 7 Primary  
Sheets and 11 Supplemental  
Sheets of C&NW 146 from  
survey and  
STA. 4446+46 TO STA. 4498+60  
SCALE: 1"=100 FT.  
OFFICE OF CHIEF ENGINEER  
JUNE 30 1917  
CHICAGO, ILL.





STATION MAP - TRACKS & STRUCTURES  
CHICAGO AND NORTH-WESTERN RAILWAY  
OPERATED BY THE  
C. & N. W. RY. CO.  
WISCONSIN DIVISION  
MILWAUKEE, WIS.  
STA. 4498+60 TO STA. 4556+00  
SCALE: 1" = 100 FT.  
OFFICE OF CHIEF ENGINEER  
CHICAGO, ILL. JUNE 30, 1917



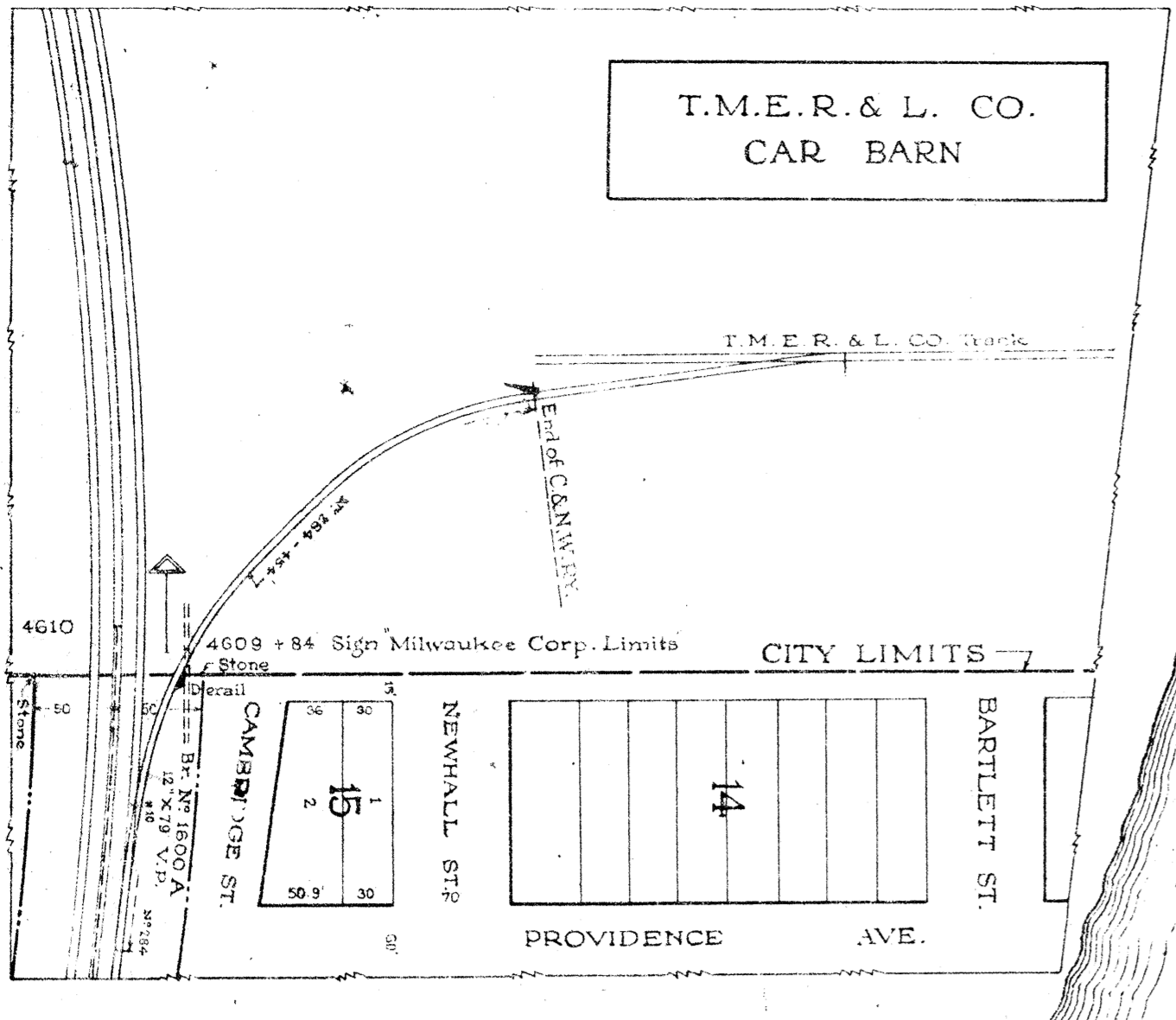
Sheet No. 6 of 7. Primary  
Sheets and 11. Supplemental  
Sheets of C&N.W.R. from  
survey station 4498+60  
to survey station 4556+00  
and 2 extra sheets

Asst. Eng. Valuation  
*W. A. [Signature]*

STATION MAP - TRACKS & STRUCTURES  
CHICAGO AND NORTH-WESTERN RAILWAY  
OPERATED BY THE  
C. & N. W. RY. CO.  
WISCONSIN DIVISION  
MILWAUKEE, WIS.  
STA. 4498+60 TO STA. 4556+00  
SCALE: 1" = 100 FT.  
OFFICE OF CHIEF ENGINEER  
CHICAGO, ILL. JUNE 30, 1917

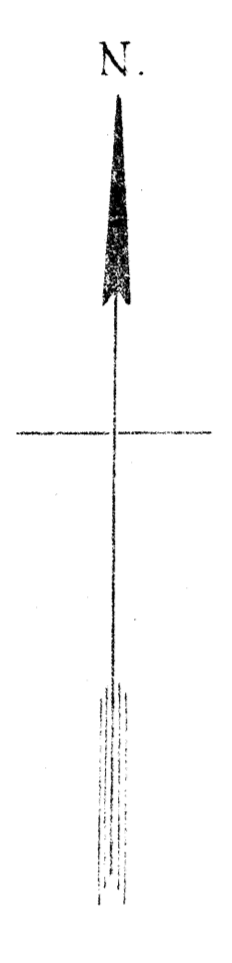
WIS. V-3  
6

E. & W. Center Line Sec. 9 T. 7 N. R. 22 E.  
4609+68 END OF SUB DIVISION WIS. V. 3



MILWAUKEE

RIVER



Sheet No. 7 of 7 Primary  
Sheets and 11 Supplemental  
Sheets of C. & N.W. Ry. Co.  
Survey Station 4456+00 to  
Survey Station 4609+68  
and 2 extra sheets

*W. H. Johnson*  
Asst. Eng. Valuation

**STATION MAP - TRACKS & STRUCTURES**

CHICAGO AND NORTH-WESTERN RAILWAY  
OPERATED BY THE  
C. & N.W. RY. CO.  
WISCONSIN DIVISION  
MILWAUKEE, WIS.

STA. 4456+00 TO STA. 4609+68

SCALE: 1"=100 FT.  
OFFICE OF CHIEF ENGINEER  
CHICAGO, ILL.

JUNE 30, 1917

