

# L A K E

# M I C H I G A N



Sheet No. Index of 9 Primary sheets and 31 Supplemental sheets of C. & N.W.R. Co. survey station 4234.83

Assisting Valuation

**INDEX MAP**  
CHICAGO AND NORTH-WESTERN RAILWAY  
OPERATED BY THE  
C. & N. W. RY. CO.

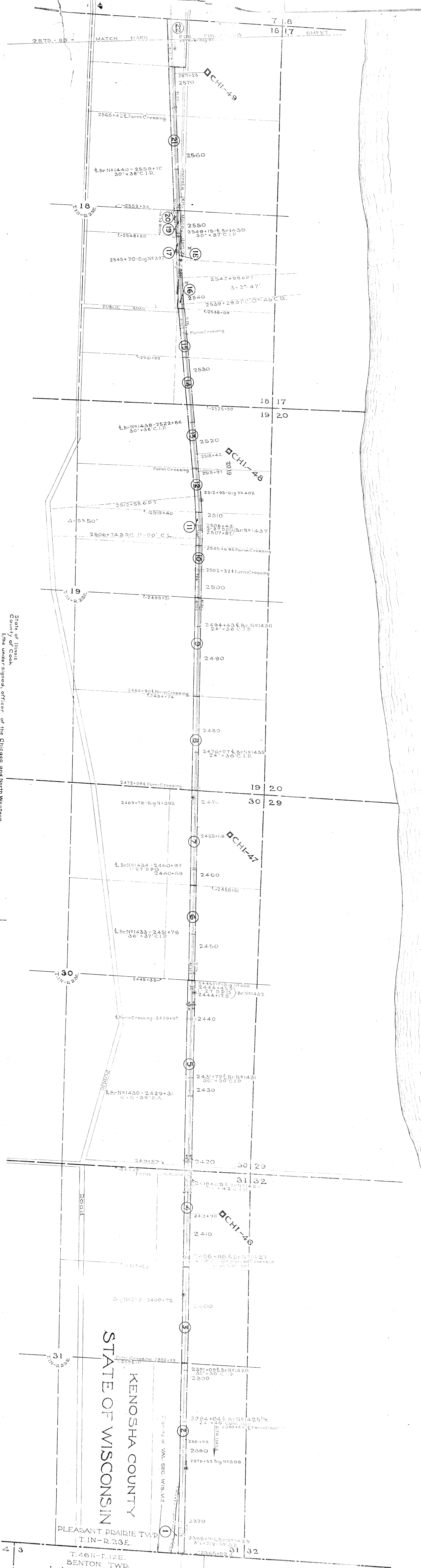
**WISCONSIN DIVISION**

STA. 2365+52 TO STA. 4234+83  
SCALE: H.N. = 1-MILE  
OFFICE OF CHIEF ENGINEER.  
JUNE 30, 1917  
CHICAGO, ILL.



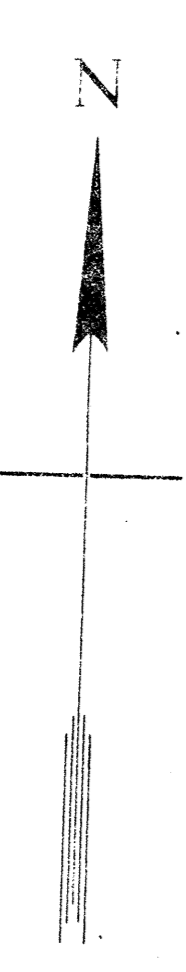
L A K E

M I C H I G A N



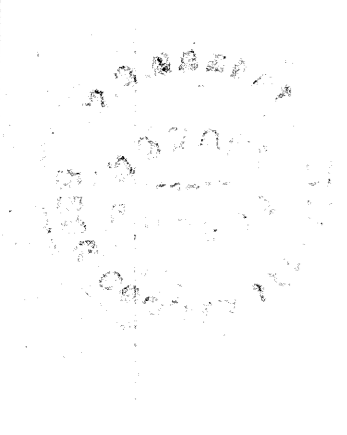
State of Illinois  
 County of Cook  
 I, \_\_\_\_\_, Notary Public in and for the County of Cook, State of Illinois, do hereby certify that this is a correct map in a series of \_\_\_\_\_ primary sheets and \_\_\_\_\_ supplemental sheets of said railway from survey station \_\_\_\_\_ to survey station \_\_\_\_\_ Wisconsin Division, State of Wisconsin, prepared from the records of said company.  
 Correct \_\_\_\_\_ Assistant Engineer Valuation

Subscribed and sworn to before me this \_\_\_\_\_ day of \_\_\_\_\_, 1920.  
 \_\_\_\_\_ Notary Public in and for the County of Cook, State of Illinois  
 My commission expires \_\_\_\_\_, 1923.



RIGHT OF WAY AND TRACK MAP  
 CHICAGO AND NORTH-WESTERN RAILWAY.  
 OPERATED BY THE  
 C. & N.-W. RY. CO.  
 WISCONSIN DIVISION  
 ILL.-WIS. STATE LINE TO MILWAUKEE, WIS.  
 STA. 2365+52.4 TO STA. 2575+85  
 SCALE: 1 IN. = 400 FT.  
 OFFICE OF CHIEF ENGINEER  
 CHICAGO, ILL.  
 JUNE 30, 1917

Plotted P.R. 11-1918  
 Checked S.D. 1-1919  
 Checked S.D. 11-1919



Sheet No. 1 of 9 Primary sheets  
 and \_\_\_\_\_ supplemental sheets  
 of C. & N.W.R. from survey  
 station \_\_\_\_\_ to survey station \_\_\_\_\_

STATE OF WISCONSIN  
 KENOSHA COUNTY  
 PLEASANT PRAIRIE TWP.  
 T. 46 N.-R. 23 E.  
 BENTON TWP.  
 LAKE COUNTY  
 STATE OF ILLINOIS

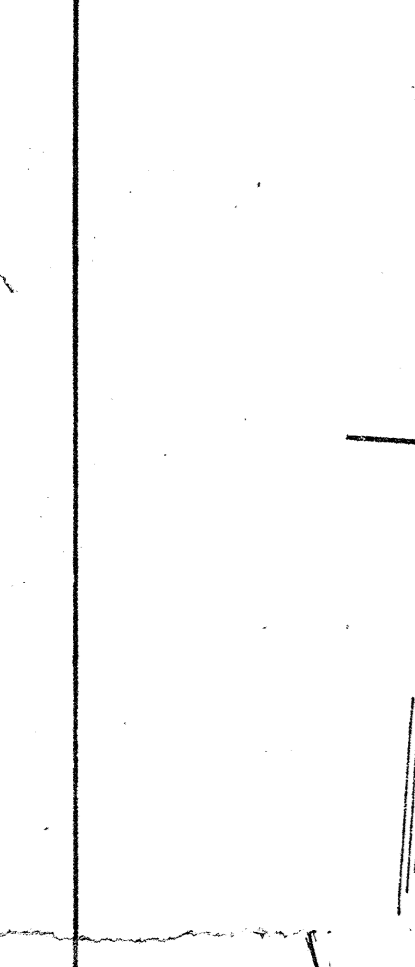
L A K E

M I C H I G A N

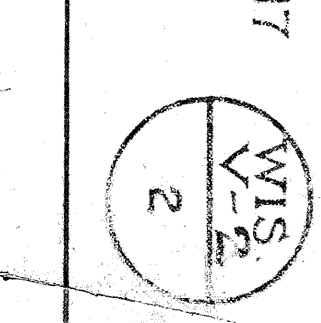


Dated - D. B. - Dec. 7, 1918  
 Traced - S. A. - Feb. 21, 1919  
 Checked - S. B. - March 10, 1919

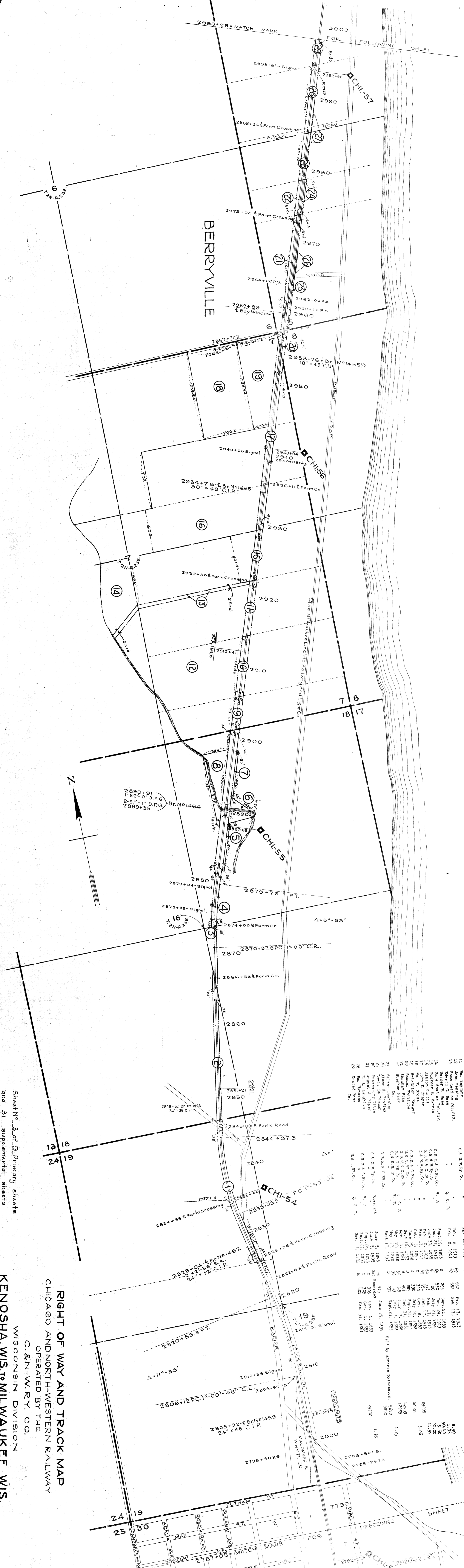
Sheet No. 2 of 9 Primary sheets  
 and 31 supplemental sheets  
 of C. & N.W.R. from survey  
 station 2575+85 to survey station 2787+05



**RIGHT OF WAY AND TRACK MAP**  
**CHICAGO AND NORTH-WESTERN RAILWAY**  
 OPERATED BY THE  
**C. & N.-W. RY. CO.**  
 WISCONSIN DIVISION  
**ILL.-WIS. STATE LINE TO MILWAUKEE, WIS.**  
 STA. 2575+85 TO STA. 2787+05  
 SCALE: 1 IN. = 400 FT.  
 OFFICE OF CHIEF ENGINEER  
 CHICAGO, ILL.  
 JUNE 30, 1917



# LAKELAND CHICAGO

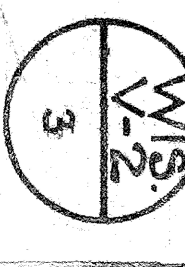


| STATION | DATE | BY        | REMARKS | AREA |
|---------|------|-----------|---------|------|
| 1       | 1893 | W. J. ... | ...     | 1.68 |
| 2       | 1893 | W. J. ... | ...     | 1.66 |
| 3       | 1893 | W. J. ... | ...     | 1.66 |
| 4       | 1893 | W. J. ... | ...     | 1.66 |
| 5       | 1893 | W. J. ... | ...     | 1.66 |
| 6       | 1893 | W. J. ... | ...     | 1.66 |
| 7       | 1893 | W. J. ... | ...     | 1.66 |
| 8       | 1893 | W. J. ... | ...     | 1.66 |
| 9       | 1893 | W. J. ... | ...     | 1.66 |
| 10      | 1893 | W. J. ... | ...     | 1.66 |
| 11      | 1893 | W. J. ... | ...     | 1.66 |
| 12      | 1893 | W. J. ... | ...     | 1.66 |
| 13      | 1893 | W. J. ... | ...     | 1.66 |
| 14      | 1893 | W. J. ... | ...     | 1.66 |
| 15      | 1893 | W. J. ... | ...     | 1.66 |
| 16      | 1893 | W. J. ... | ...     | 1.66 |
| 17      | 1893 | W. J. ... | ...     | 1.66 |
| 18      | 1893 | W. J. ... | ...     | 1.66 |
| 19      | 1893 | W. J. ... | ...     | 1.66 |
| 20      | 1893 | W. J. ... | ...     | 1.66 |
| 21      | 1893 | W. J. ... | ...     | 1.66 |
| 22      | 1893 | W. J. ... | ...     | 1.66 |
| 23      | 1893 | W. J. ... | ...     | 1.66 |
| 24      | 1893 | W. J. ... | ...     | 1.66 |
| 25      | 1893 | W. J. ... | ...     | 1.66 |

Plotted - D.B.D. - Nov 29-1918  
 Traced - S.A.H. - Jan. 21-1919  
 Checked - D.B.D. - March 9 - 1919

Sheet No. 3 of 9 Primary sheets  
 and 31 supplemental sheets  
 of C.&N.W.R.R. from survey  
 station 2780 to survey station 2998+25

**RIGHT OF WAY AND TRACK MAP**  
**CHICAGO AND NORTH-WESTERN RAILWAY**  
 OPERATED BY THE  
**C.&N.W.R.Y. CO.**  
 WISCONSIN DIVISION  
**KENOSHA, WIS. TO MILWAUKEE, WIS.**  
 STA. 2787+05 TO STA. 2998+25  
 SCALE 1/4" = 400 FT.  
 OFFICE OF CHIEF ENGINEER  
 CHICAGO, ILL.  
 JUNE 30, 1917



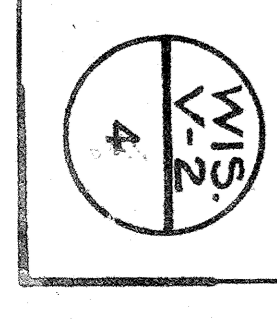
Plotted by A. P. Nov. 25-1918  
 Checked by H. J. 18-1918  
 Checked by D. B. 17-1918



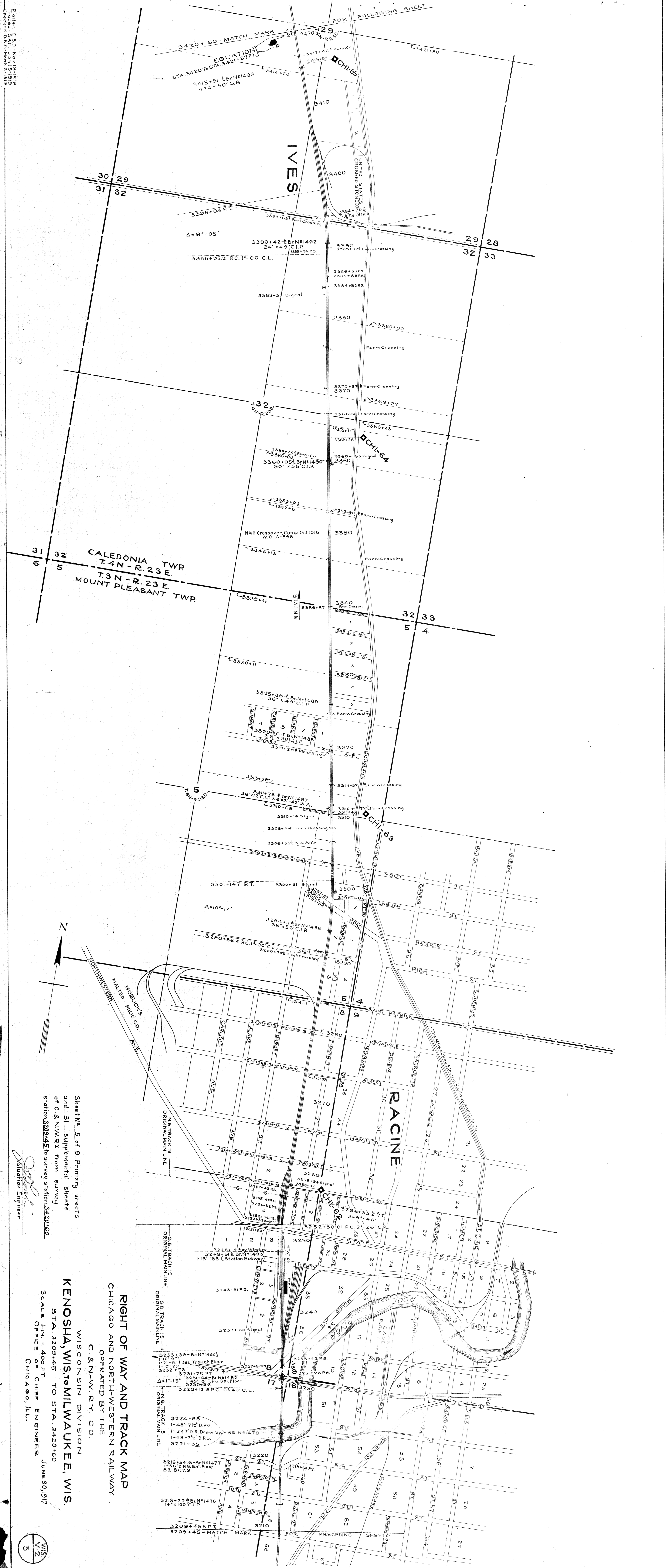
LAKE MICHIGAN

| NO. | NAME               | DATE           | REVISION | BY                   |
|-----|--------------------|----------------|----------|----------------------|
| 1   | General Note       | Sept. 27, 1913 |          | G. B. K. & N. W. Co. |
| 2   | M. R. Green        | Sept. 11, 1913 |          | G. B. K. & N. W. Co. |
| 3   | Alfred Arrington   | Sept. 11, 1913 |          |                      |
| 4   | Wm. B. Kneass      | Sept. 11, 1913 |          |                      |
| 5   | Wm. B. Kneass      | Sept. 11, 1913 |          |                      |
| 6   | Joseph Bishop      | Sept. 11, 1913 |          |                      |
| 7   | Henry T. O'Connell | Sept. 11, 1913 |          |                      |
| 8   | Henry T. O'Connell | Sept. 11, 1913 |          |                      |

RIGHT OF WAY AND TRACK MAP  
 CHICAGO AND NORTH-WESTERN RAILWAY  
 OPERATED BY THE  
 C. & N. W. RY. CO.  
 WISCONSIN DIVISION  
**KENOSHA, WIS. TO MILWAUKEE, WIS.**  
 STA. 2998+25 TO STA. 3209+45  
 SCALE 1" = 400 FT.  
 OFFICE OF CHIEF ENGINEER  
 JUNE 30, 1917  
 CHICAGO, ILL.



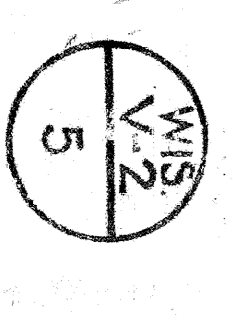
Plotted 2-20-1918  
Checked 3-20-1918  
Checked 5-10-1918



CALEDONIA TWP.  
T.4N-R.23E.  
T.3N-R.23E.  
MOUNT PLEASANT TWP.

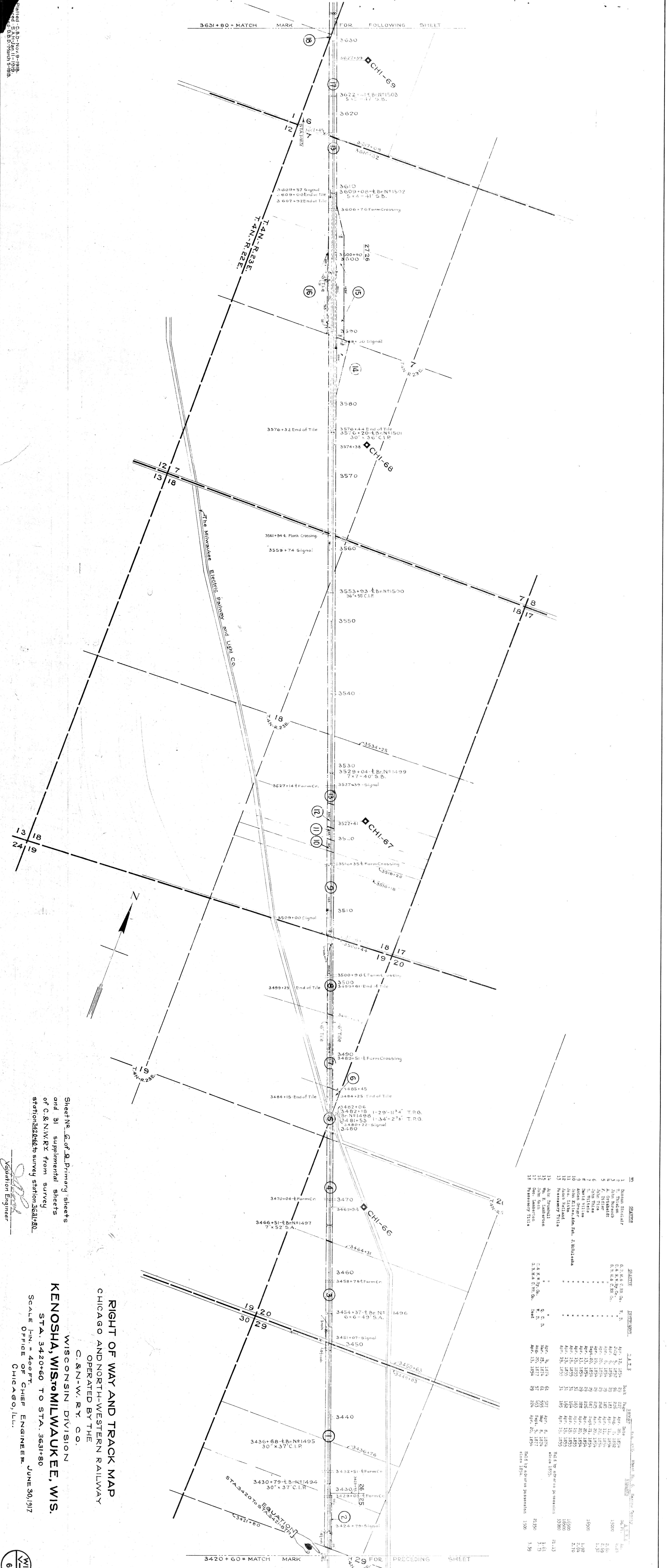
**RIGHT OF WAY AND TRACK MAP**  
CHICAGO AND NORTH-WESTERN RAILWAY  
OPERATED BY THE  
C. & N.-W. RY. CO.  
WISCONSIN DIVISION  
**KENOSHA, WIS. TO MILWAUKEE, WIS.**  
STA. 3209+45 TO STA. 3420+60  
SCALE 1" = 400 FT.  
OFFICE OF CHIEF ENGINEER  
JUNE 30, 1917  
CHICAGO, ILL.

Validation Engineer



5

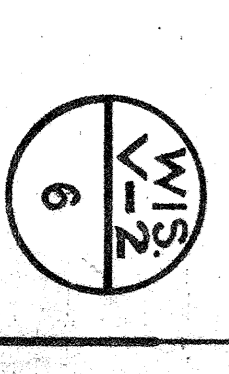
Printed C.B.D. Nov. 9, 1918.  
 Reprinted S.A.H. Jan. 11, 1919.  
 Reprinted S.B.D. March 5, 1919.

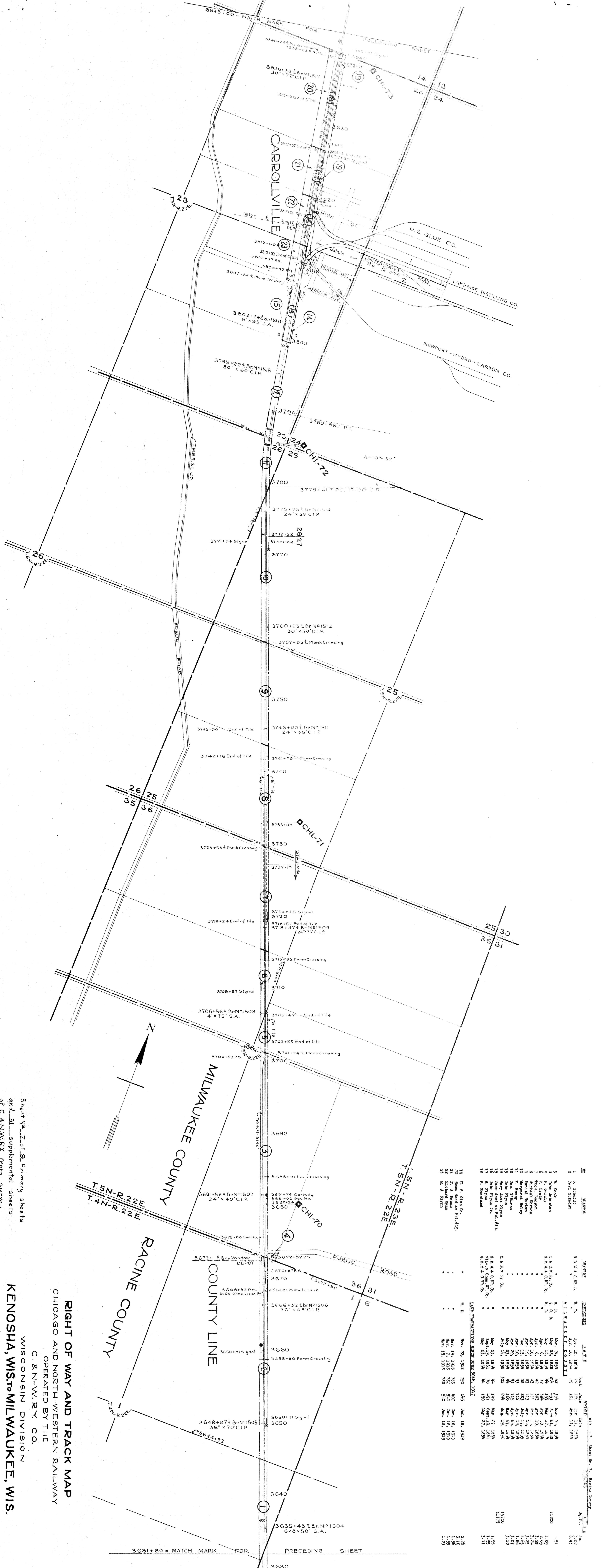


| NO. | NAME           | DATE          | BY  | REVISION    |
|-----|----------------|---------------|-----|-------------|
| 1   | Duncan Stewart | Apr. 13, 1894 | 22  | Asst. Engr. |
| 2   | John Reynolds  | Apr. 13, 1894 | 23  | Asst. Engr. |
| 3   | John Reynolds  | Apr. 13, 1894 | 24  | Asst. Engr. |
| 4   | John Reynolds  | Apr. 13, 1894 | 25  | Asst. Engr. |
| 5   | John Reynolds  | Apr. 13, 1894 | 26  | Asst. Engr. |
| 6   | John Reynolds  | Apr. 13, 1894 | 27  | Asst. Engr. |
| 7   | John Reynolds  | Apr. 13, 1894 | 28  | Asst. Engr. |
| 8   | John Reynolds  | Apr. 13, 1894 | 29  | Asst. Engr. |
| 9   | John Reynolds  | Apr. 13, 1894 | 30  | Asst. Engr. |
| 10  | John Reynolds  | Apr. 13, 1894 | 31  | Asst. Engr. |
| 11  | John Reynolds  | Apr. 13, 1894 | 32  | Asst. Engr. |
| 12  | John Reynolds  | Apr. 13, 1894 | 33  | Asst. Engr. |
| 13  | John Reynolds  | Apr. 13, 1894 | 34  | Asst. Engr. |
| 14  | John Reynolds  | Apr. 13, 1894 | 35  | Asst. Engr. |
| 15  | John Reynolds  | Apr. 13, 1894 | 36  | Asst. Engr. |
| 16  | John Reynolds  | Apr. 13, 1894 | 37  | Asst. Engr. |
| 17  | John Reynolds  | Apr. 13, 1894 | 38  | Asst. Engr. |
| 18  | John Reynolds  | Apr. 13, 1894 | 39  | Asst. Engr. |
| 19  | John Reynolds  | Apr. 13, 1894 | 40  | Asst. Engr. |
| 20  | John Reynolds  | Apr. 13, 1894 | 41  | Asst. Engr. |
| 21  | John Reynolds  | Apr. 13, 1894 | 42  | Asst. Engr. |
| 22  | John Reynolds  | Apr. 13, 1894 | 43  | Asst. Engr. |
| 23  | John Reynolds  | Apr. 13, 1894 | 44  | Asst. Engr. |
| 24  | John Reynolds  | Apr. 13, 1894 | 45  | Asst. Engr. |
| 25  | John Reynolds  | Apr. 13, 1894 | 46  | Asst. Engr. |
| 26  | John Reynolds  | Apr. 13, 1894 | 47  | Asst. Engr. |
| 27  | John Reynolds  | Apr. 13, 1894 | 48  | Asst. Engr. |
| 28  | John Reynolds  | Apr. 13, 1894 | 49  | Asst. Engr. |
| 29  | John Reynolds  | Apr. 13, 1894 | 50  | Asst. Engr. |
| 30  | John Reynolds  | Apr. 13, 1894 | 51  | Asst. Engr. |
| 31  | John Reynolds  | Apr. 13, 1894 | 52  | Asst. Engr. |
| 32  | John Reynolds  | Apr. 13, 1894 | 53  | Asst. Engr. |
| 33  | John Reynolds  | Apr. 13, 1894 | 54  | Asst. Engr. |
| 34  | John Reynolds  | Apr. 13, 1894 | 55  | Asst. Engr. |
| 35  | John Reynolds  | Apr. 13, 1894 | 56  | Asst. Engr. |
| 36  | John Reynolds  | Apr. 13, 1894 | 57  | Asst. Engr. |
| 37  | John Reynolds  | Apr. 13, 1894 | 58  | Asst. Engr. |
| 38  | John Reynolds  | Apr. 13, 1894 | 59  | Asst. Engr. |
| 39  | John Reynolds  | Apr. 13, 1894 | 60  | Asst. Engr. |
| 40  | John Reynolds  | Apr. 13, 1894 | 61  | Asst. Engr. |
| 41  | John Reynolds  | Apr. 13, 1894 | 62  | Asst. Engr. |
| 42  | John Reynolds  | Apr. 13, 1894 | 63  | Asst. Engr. |
| 43  | John Reynolds  | Apr. 13, 1894 | 64  | Asst. Engr. |
| 44  | John Reynolds  | Apr. 13, 1894 | 65  | Asst. Engr. |
| 45  | John Reynolds  | Apr. 13, 1894 | 66  | Asst. Engr. |
| 46  | John Reynolds  | Apr. 13, 1894 | 67  | Asst. Engr. |
| 47  | John Reynolds  | Apr. 13, 1894 | 68  | Asst. Engr. |
| 48  | John Reynolds  | Apr. 13, 1894 | 69  | Asst. Engr. |
| 49  | John Reynolds  | Apr. 13, 1894 | 70  | Asst. Engr. |
| 50  | John Reynolds  | Apr. 13, 1894 | 71  | Asst. Engr. |
| 51  | John Reynolds  | Apr. 13, 1894 | 72  | Asst. Engr. |
| 52  | John Reynolds  | Apr. 13, 1894 | 73  | Asst. Engr. |
| 53  | John Reynolds  | Apr. 13, 1894 | 74  | Asst. Engr. |
| 54  | John Reynolds  | Apr. 13, 1894 | 75  | Asst. Engr. |
| 55  | John Reynolds  | Apr. 13, 1894 | 76  | Asst. Engr. |
| 56  | John Reynolds  | Apr. 13, 1894 | 77  | Asst. Engr. |
| 57  | John Reynolds  | Apr. 13, 1894 | 78  | Asst. Engr. |
| 58  | John Reynolds  | Apr. 13, 1894 | 79  | Asst. Engr. |
| 59  | John Reynolds  | Apr. 13, 1894 | 80  | Asst. Engr. |
| 60  | John Reynolds  | Apr. 13, 1894 | 81  | Asst. Engr. |
| 61  | John Reynolds  | Apr. 13, 1894 | 82  | Asst. Engr. |
| 62  | John Reynolds  | Apr. 13, 1894 | 83  | Asst. Engr. |
| 63  | John Reynolds  | Apr. 13, 1894 | 84  | Asst. Engr. |
| 64  | John Reynolds  | Apr. 13, 1894 | 85  | Asst. Engr. |
| 65  | John Reynolds  | Apr. 13, 1894 | 86  | Asst. Engr. |
| 66  | John Reynolds  | Apr. 13, 1894 | 87  | Asst. Engr. |
| 67  | John Reynolds  | Apr. 13, 1894 | 88  | Asst. Engr. |
| 68  | John Reynolds  | Apr. 13, 1894 | 89  | Asst. Engr. |
| 69  | John Reynolds  | Apr. 13, 1894 | 90  | Asst. Engr. |
| 70  | John Reynolds  | Apr. 13, 1894 | 91  | Asst. Engr. |
| 71  | John Reynolds  | Apr. 13, 1894 | 92  | Asst. Engr. |
| 72  | John Reynolds  | Apr. 13, 1894 | 93  | Asst. Engr. |
| 73  | John Reynolds  | Apr. 13, 1894 | 94  | Asst. Engr. |
| 74  | John Reynolds  | Apr. 13, 1894 | 95  | Asst. Engr. |
| 75  | John Reynolds  | Apr. 13, 1894 | 96  | Asst. Engr. |
| 76  | John Reynolds  | Apr. 13, 1894 | 97  | Asst. Engr. |
| 77  | John Reynolds  | Apr. 13, 1894 | 98  | Asst. Engr. |
| 78  | John Reynolds  | Apr. 13, 1894 | 99  | Asst. Engr. |
| 79  | John Reynolds  | Apr. 13, 1894 | 100 | Asst. Engr. |

RIGHT OF WAY AND TRACK MAP  
 CHICAGO AND NORTH-WESTERN RAILWAY  
 OPERATED BY THE  
 C. & N. W. RY. CO.  
 WISCONSIN DIVISION  
**KENOSHA, WIS. TO MILWAUKEE, WIS.**  
 STA. 3420+60 TO STA. 3631+80  
 SCALE 1/4" = 40.0 FT.  
 OFFICE OF CHIEF ENGINEER  
 CHICAGO, ILL.  
 JUNE 30, 1917

Sheet No. 6 of 9 Primary Sheets  
 and 31 supplemental sheets  
 of C. & N. W. RY. from survey  
 station 3420+60 to survey station 3631+80.  
 Education Engineer



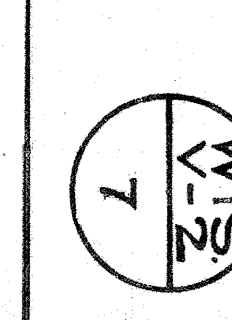


| NO. | NAME           | DATE          | AGE | SEX | REL.     | STATUS        |
|-----|----------------|---------------|-----|-----|----------|---------------|
| 1   | G. Schmidt     | Apr. 10, 1854 | 29  | M   | Head     | Mar. 21, 1884 |
| 2   | Carl Schmidt   | Apr. 10, 1854 | 29  | M   | Head     | Mar. 21, 1884 |
| 3   | H. Cook        | Mar. 24, 1858 | 12  | M   | Son      | Mar. 21, 1884 |
| 4   | John Cook      | Mar. 24, 1858 | 12  | M   | Son      | Mar. 21, 1884 |
| 5   | F. Brady       | Apr. 6, 1858  | 12  | M   | Son      | Mar. 21, 1884 |
| 6   | Thos. Braden   | Apr. 6, 1858  | 12  | M   | Son      | Mar. 21, 1884 |
| 7   | John Braden    | Apr. 6, 1858  | 12  | M   | Son      | Mar. 21, 1884 |
| 8   | Margaret Brady | Apr. 6, 1858  | 12  | F   | Daughter | Mar. 21, 1884 |
| 9   | John Ryan      | Apr. 20, 1854 | 13  | M   | Son      | Mar. 21, 1884 |
| 10  | Mary Jane Ryan | Apr. 20, 1854 | 13  | F   | Daughter | Mar. 21, 1884 |
| 11  | John Ryan      | Apr. 20, 1854 | 13  | M   | Son      | Mar. 21, 1884 |
| 12  | Mary Jane Ryan | Apr. 20, 1854 | 13  | F   | Daughter | Mar. 21, 1884 |
| 13  | John Ryan      | Apr. 20, 1854 | 13  | M   | Son      | Mar. 21, 1884 |
| 14  | Mary Jane Ryan | Apr. 20, 1854 | 13  | F   | Daughter | Mar. 21, 1884 |
| 15  | John Ryan      | Apr. 20, 1854 | 13  | M   | Son      | Mar. 21, 1884 |
| 16  | Mary Jane Ryan | Apr. 20, 1854 | 13  | F   | Daughter | Mar. 21, 1884 |
| 17  | John Ryan      | Apr. 20, 1854 | 13  | M   | Son      | Mar. 21, 1884 |
| 18  | Mary Jane Ryan | Apr. 20, 1854 | 13  | F   | Daughter | Mar. 21, 1884 |
| 19  | U. S. Glue Co. | Nov. 23, 1854 | 19  | M   | Partner  | Jan. 16, 1919 |
| 20  | U. S. Glue Co. | Nov. 23, 1854 | 19  | M   | Partner  | Jan. 16, 1919 |
| 21  | U. S. Glue Co. | Nov. 23, 1854 | 19  | M   | Partner  | Jan. 16, 1919 |
| 22  | U. S. Glue Co. | Nov. 23, 1854 | 19  | M   | Partner  | Jan. 16, 1919 |
| 23  | U. S. Glue Co. | Nov. 23, 1854 | 19  | M   | Partner  | Jan. 16, 1919 |

Sheet No. 7 of 9 Primary Sheets  
and 21 supplemental sheets  
of C. & N.W. Ry. from survey  
station 3631+80 to survey station 3843+00

**KENOSHA, WIS. TO MILWAUKEE, WIS.**  
SCALE 1" = 400 FT.  
OFFICE OF CHIEF ENGINEER  
CHICAGO, ILL.

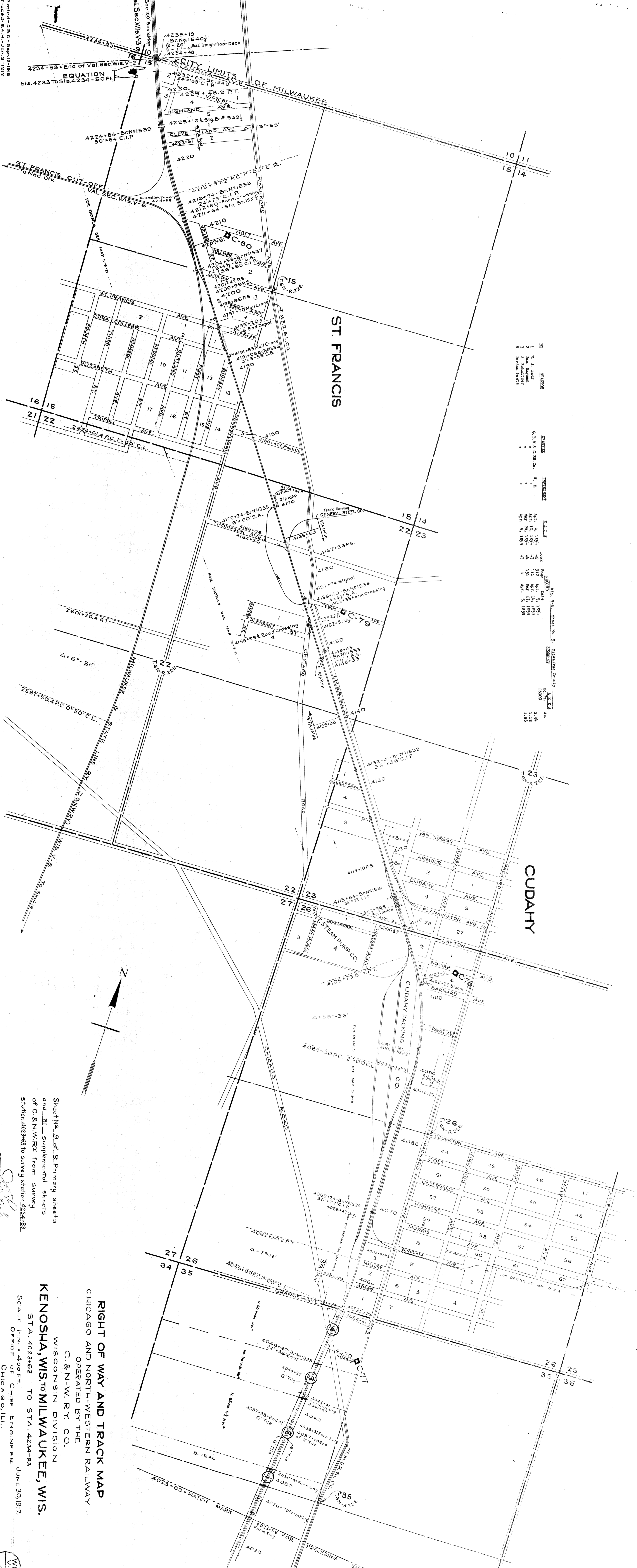
**RIGHT OF WAY AND TRACK MAP**  
CHICAGO AND NORTH-WESTERN RAILWAY  
OPERATED BY THE  
C. & N.W. RY. CO.  
WISCONSIN DIVISION  
JUNE 30, 1917







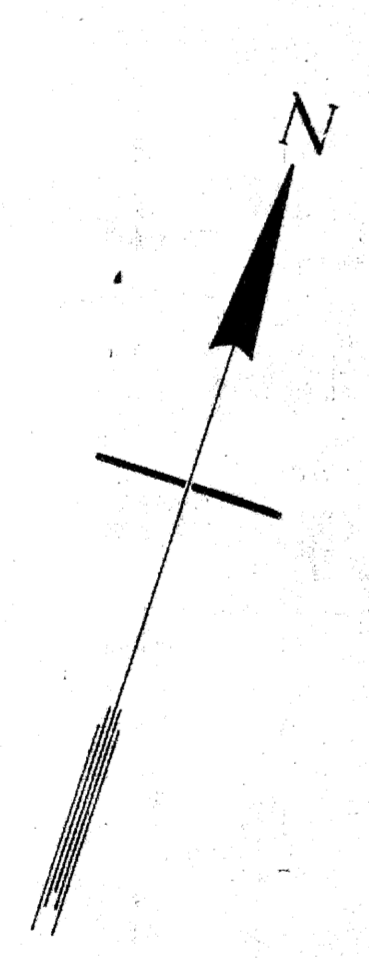
Plotted - D.B.D. - Sept. 12, 1916  
 Traced - S.A.H. - Jan. 3, 1918  
 Checked - D.B.D. - March 3, 1918



REVISIONS

| NO. | BY         | DATE          | DESCRIPTION |
|-----|------------|---------------|-------------|
| 1   | J. J. Shaw | Apr. 11, 1894 | ...         |
| 2   | J. J. Shaw | Apr. 20, 1894 | ...         |
| 3   | J. J. Shaw | Apr. 27, 1894 | ...         |
| 4   | J. J. Shaw | Apr. 31, 1894 | ...         |

DATE: APR. 11, 1894  
 APR. 20, 1894  
 APR. 27, 1894  
 APR. 31, 1894



Sheet No. 9 of 9 Primary sheets  
 and 21 supplemental sheets  
 of C. & N.W. R.R. from survey  
 station 4233+63 to survey station 4234+83

Validation Engineer

**RIGHT OF WAY AND TRACK MAP**  
 CHICAGO AND NORTH-WESTERN RAILWAY  
 OPERATED BY THE  
 C. & N.W. R.R. CO.  
 WISCONSIN DIVISION

**KENOSHA, WIS. TO MILWAUKEE, WIS.**  
 ST. A. 4023+63 TO STA. 4234+83  
 SCALE 1/4" = 400 FT.  
 OFFICE OF CHIEF ENGINEER  
 JUNE 30, 1917  
 CHICAGO, ILL.