

SECTION	OWNER	ACREAGE	INSTRUMENT	D.A.T.	BOOK	PAGE	DATE
1	Jane Straub	0.10	Q.C.D.	Jan 27, 1872	301	308	Dec. 4, 1872
2	John Straub	0.10	Q.C.D.	Jan 27, 1872	301	309	Dec. 4, 1872
3	John Straub	0.10	Q.C.D.	Jan 27, 1872	301	310	Dec. 4, 1872
4	John Straub	0.10	Q.C.D.	Jan 27, 1872	301	311	Dec. 4, 1872
5	John Straub	0.10	Q.C.D.	Jan 27, 1872	301	312	Dec. 4, 1872
6	John Straub	0.10	Q.C.D.	Jan 27, 1872	301	313	Dec. 4, 1872
7	John Straub	0.10	Q.C.D.	Jan 27, 1872	301	314	Dec. 4, 1872
8	John Straub	0.10	Q.C.D.	Jan 27, 1872	301	315	Dec. 4, 1872
9	John Straub	0.10	Q.C.D.	Jan 27, 1872	301	316	Dec. 4, 1872
10	John Straub	0.10	Q.C.D.	Jan 27, 1872	301	317	Dec. 4, 1872
11	John Straub	0.10	Q.C.D.	Jan 27, 1872	301	318	Dec. 4, 1872
12	John Straub	0.10	Q.C.D.	Jan 27, 1872	301	319	Dec. 4, 1872
13	John Straub	0.10	Q.C.D.	Jan 27, 1872	301	320	Dec. 4, 1872
14	John Straub	0.10	Q.C.D.	Jan 27, 1872	301	321	Dec. 4, 1872

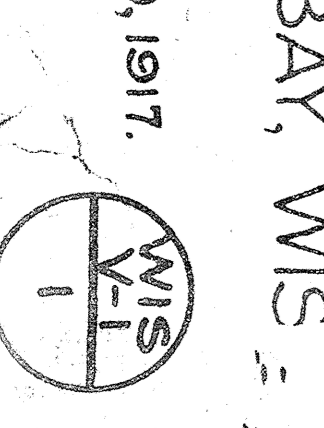
State of Illinois
County of Cook

I, the undersigned, officer of the Chicago and North Western Railway do hereby certify that this is a correct map in a series of 24 primary sheets and 3 supplementary sheets of said railway from survey station 1901+08 to survey station 2716+52, GALENA DIVISION, State of Wisconsin, prepared from the records of said company.

Correct Valuation Engineer
Chief Engineer
Notary Public in and for the State of Illinois

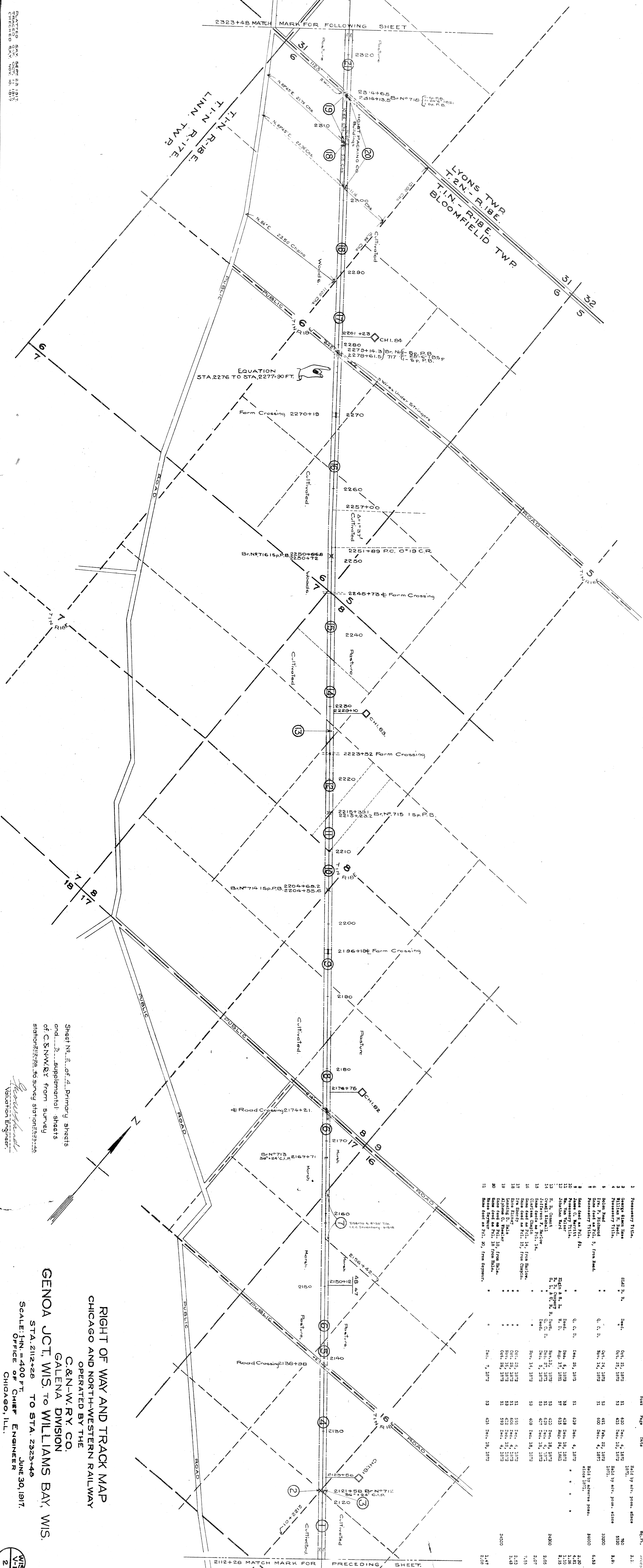
RIGHT OF WAY AND TRACK MAP
CHICAGO AND NORTH-WESTERN RAILWAY
OPERATED BY THE
C.&N.-W.R.Y. CO.
GALENA DIVISION
GENOA JCT. WIS. TO WILLIAMS BAY, WIS.
STA. 1901+08 TO STA. 2112+28
SCALE: 1 IN. = 400 FT.
OFFICE OF CHIEF ENGINEER
JUNE 30, 1917
CHICAGO, ILL.

PLATTED LEG. SEPT. 25, 1917
FRAMED OCT. 12, 1917
CHICAGO, ILL.



PLATTED SKY SEPT 23, 1917
 TRACED SKY OCT. 11, 1917
 CHECKED SKY NOV. 10, 1917

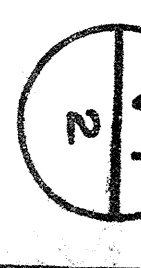
2323+48 MATCH MARK FOR FOLLOWING SHEET



SECTION	QUARTER	INSTRUMENT	D. & L. E.	BOOK	RECORD	DATE	REMARKS	AREA ACRES
1	Passerby title.							2.1
2	George James Bass	Grant	Oct. 21, 1872	51	420	Dec. 4, 1872	Hold by adv. poss. since 1871.	3.0
3	Passerby title.		Oct. 21, 1872	53	412	Dec. 19, 1872	Hold by adv. poss. since 1871.	2.85
4	Passerby title.							
5	John Bond		Oct. 24, 1872	51	415	Dec. 22, 1872		3.850
6	John Bond		Oct. 24, 1872	51	405	Dec. 4, 1872		6.43
7	John Bond						Hold by adverse poss. since 1871.	3.600
8	James C. Merrill							2.30
9	James C. Merrill							4.61
10	Passerby title.							1.26
11	Passerby title.							1.28
12	Robert Ward		Dec. 17, 1871	57	418	Aug. 24, 1881		2.35
13	R. B. Oberst		Dec. 15, 1872	52	413	Dec. 19, 1872		2.800
14	Jefferson F. Barlow		Dec. 5, 1872	53	407	Dec. 19, 1872		2.05
15	Grant Bond		Dec. 5, 1872	53	407	Dec. 19, 1872		2.07
16	Grant Bond		Dec. 5, 1872	53	407	Dec. 19, 1872		2.07
17	Grant Bond		Dec. 5, 1872	53	407	Dec. 19, 1872		2.07
18	Grant Bond		Dec. 5, 1872	53	407	Dec. 19, 1872		2.07
19	Grant Bond		Dec. 5, 1872	53	407	Dec. 19, 1872		2.07
20	Grant Bond		Dec. 5, 1872	53	407	Dec. 19, 1872		2.07
21	Grant Bond		Dec. 5, 1872	53	407	Dec. 19, 1872		2.07

Sheet No. 2 of 4 Primary sheets
 and 3 supplemental sheets
 of C&N.W.R.Y from survey
 station 212+26 to survey station 2323+48

RIGHT OF WAY AND TRACK MAP
 CHICAGO AND NORTH-WESTERN RAILWAY
 OPERATED BY THE
 C. & N. W. R. Y. CO.
 GALENA DIVISION
 GENOA JCT., WIS. TO WILLIAMS BAY, WIS.
 STA. 2112+26 TO STA. 2323+48
 SCALE: 1" = 400 FT.
 OFFICE OF CHIEF ENGINEER
 CHICAGO, ILL.
 JUNE 30, 1917.

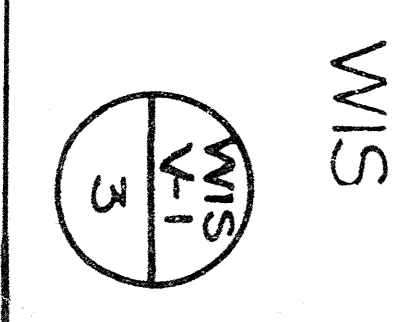




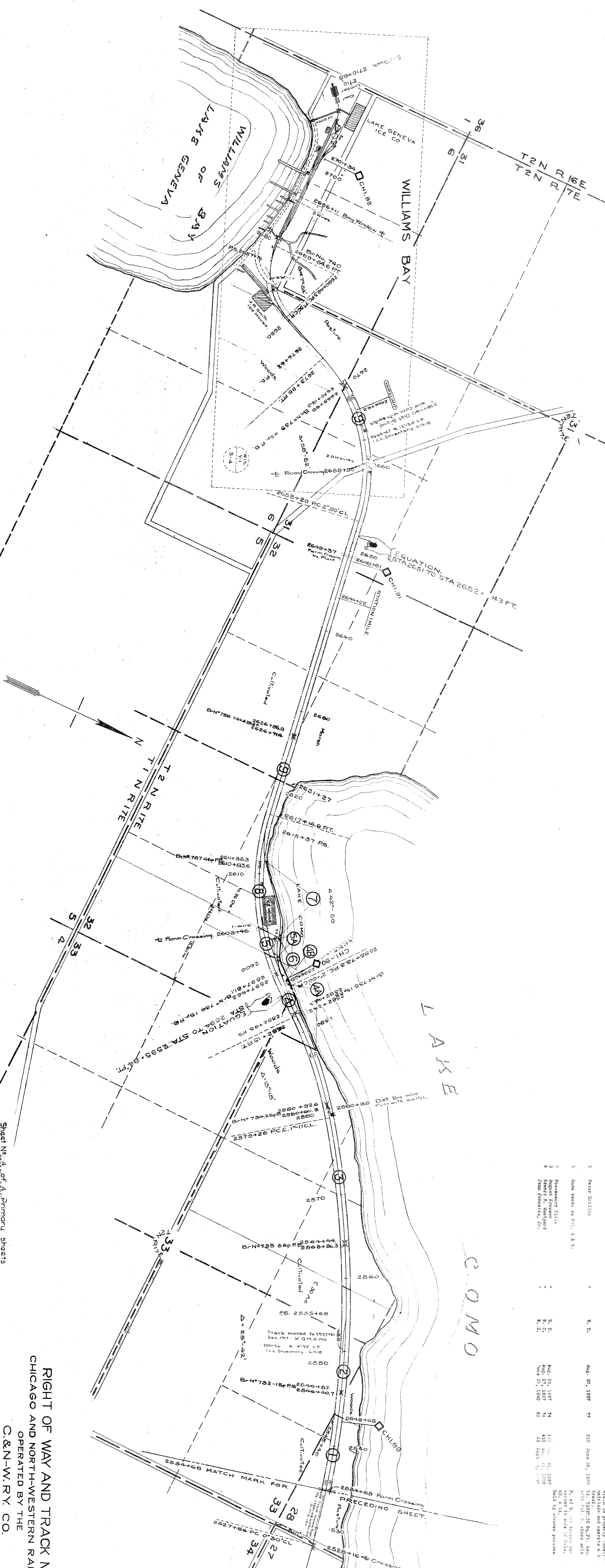
NO.	GRANTOR	GRANTEE	INSTRUMENT	DATE	FOOT	RECORDED	REMARKS	A. E. R. No.
1	Wm. S. Soper	CHICAGO & N. W. RY. CO.	PLAT	Jan. 7, 1892	418	Jan. 10, 1892		1,881
2	Wm. S. Soper	CHICAGO & N. W. RY. CO.	PLAT	Jan. 7, 1892	58	Jan. 10, 1892		3,211
3	E. D. Richardson	CHICAGO & N. W. RY. CO.	PLAT	Feb. 6, 1892	77	Apr. 11, 1892		1,285
4	E. D. Richardson	CHICAGO & N. W. RY. CO.	PLAT	Feb. 6, 1892	53	Dec. 15, 1892	Acq. by adv. poss.	4,015
5	R. W. Garrison	CHICAGO & N. W. RY. CO.	PLAT	Nov. 9, 1891	52	Dec. 4, 1892		2,05
6	Robert Cook	CHICAGO & N. W. RY. CO.	PLAT	Oct. 9, 1892	51	Dec. 4, 1892		
7	Robert Cook	CHICAGO & N. W. RY. CO.	PLAT	Nov. 9, 1891	52	Dec. 4, 1892		
8	Jay Gould	CHICAGO & N. W. RY. CO.	PLAT	Aug. 30, 1897	121	Oct. 9, 1907	Not proper.	5,900
9	Ohio, Lake Geneva & Pacific	CHICAGO & N. W. RY. CO.	PLAT	Aug. 17, 1897	121	Oct. 9, 1907	Not proper.	5,900
10	John E. Garrison	CHICAGO & N. W. RY. CO.	PLAT	Aug. 22, 1897	74	Aug. 31, 1897		4,55
11	H. Z. Lister	CHICAGO & N. W. RY. CO.	PLAT	May 20, 1899	79	June 14, 1899		3,23
12	Wm. S. Soper	CHICAGO & N. W. RY. CO.	PLAT	Aug. 28, 1892	74	Aug. 31, 1897		4,86
13	Wm. S. Soper	CHICAGO & N. W. RY. CO.	PLAT	Aug. 28, 1892	74	Aug. 31, 1897		4,86
14	Thos. McDonald	CHICAGO & N. W. RY. CO.	PLAT	Aug. 28, 1892	74	Aug. 31, 1897		5,21
15	Patrick Hare	CHICAGO & N. W. RY. CO.	PLAT	Aug. 28, 1892	74	Aug. 31, 1897		2,50
16	Albert Keep	CHICAGO & N. W. RY. CO.	PLAT	Apr. 29, 1890	125	Nov. 22, 1901	Not recorded.	
17	Wm. S. Soper	CHICAGO & N. W. RY. CO.	PLAT	Nov. 14, 1901	125	Nov. 22, 1901	Not recorded.	
18	Wm. S. Soper	CHICAGO & N. W. RY. CO.	PLAT	Nov. 14, 1901	125	Nov. 22, 1901	Not recorded.	
19	Wm. S. Soper	CHICAGO & N. W. RY. CO.	PLAT	Nov. 14, 1901	125	Nov. 22, 1901	Not recorded.	
20	Wm. S. Soper	CHICAGO & N. W. RY. CO.	PLAT	Nov. 14, 1901	125	Nov. 22, 1901	Not recorded.	
21	Wm. S. Soper	CHICAGO & N. W. RY. CO.	PLAT	Nov. 14, 1901	125	Nov. 22, 1901	Not recorded.	
22	Wm. S. Soper	CHICAGO & N. W. RY. CO.	PLAT	Nov. 14, 1901	125	Nov. 22, 1901	Not recorded.	
23	Wm. S. Soper	CHICAGO & N. W. RY. CO.	PLAT	Nov. 14, 1901	125	Nov. 22, 1901	Not recorded.	
24	Wm. S. Soper	CHICAGO & N. W. RY. CO.	PLAT	Nov. 14, 1901	125	Nov. 22, 1901	Not recorded.	
25	Wm. S. Soper	CHICAGO & N. W. RY. CO.	PLAT	Nov. 14, 1901	125	Nov. 22, 1901	Not recorded.	
26	Wm. S. Soper	CHICAGO & N. W. RY. CO.	PLAT	Nov. 14, 1901	125	Nov. 22, 1901	Not recorded.	
27	Wm. S. Soper	CHICAGO & N. W. RY. CO.	PLAT	Nov. 14, 1901	125	Nov. 22, 1901	Not recorded.	
28	Wm. S. Soper	CHICAGO & N. W. RY. CO.	PLAT	Nov. 14, 1901	125	Nov. 22, 1901	Not recorded.	
29	Wm. S. Soper	CHICAGO & N. W. RY. CO.	PLAT	Nov. 14, 1901	125	Nov. 22, 1901	Not recorded.	
30	Wm. S. Soper	CHICAGO & N. W. RY. CO.	PLAT	Nov. 14, 1901	125	Nov. 22, 1901	Not recorded.	

RIGHT OF WAY AND TRACK MAP
 CHICAGO AND NORTH-WESTERN RAILWAY
 OPERATED BY THE
 C. & N. W. RY. CO.
 GALENA DIVISION
 GENOA JCT. WIS. TO WILLIAMS BAY, WIS
 STA. 2223+48 TO STA. 2534+68
 SCALE: 1 IN. = 400 FT.
 OFFICE OF CHIEF ENGINEER
 CHICAGO, ILL.
 JUNE 30, 1917

PLATTED SKY OCT. 8, 1917
 CHECKED SKY NOV. 10, 1917



PLATTED MAY 28, 1917
 CHECKED MAY 28, 1917



NO.	DATE	BY	FOR	REVISION	DATE	BY	FOR
1	Aug. 25, 1887	R. D.	423	Aug. 31, 1887	206	June 25, 1888	210
2	Aug. 25, 1887	R. D.	423	Aug. 31, 1887	206	June 25, 1888	210
3	Aug. 25, 1887	R. D.	423	Aug. 31, 1887	206	June 25, 1888	210
4	Aug. 25, 1887	R. D.	423	Aug. 31, 1887	206	June 25, 1888	210
5	Aug. 25, 1887	R. D.	423	Aug. 31, 1887	206	June 25, 1888	210
6	Aug. 25, 1887	R. D.	423	Aug. 31, 1887	206	June 25, 1888	210
7	Aug. 25, 1887	R. D.	423	Aug. 31, 1887	206	June 25, 1888	210
8	Aug. 25, 1887	R. D.	423	Aug. 31, 1887	206	June 25, 1888	210
9	Aug. 25, 1887	R. D.	423	Aug. 31, 1887	206	June 25, 1888	210
10	Aug. 25, 1887	R. D.	423	Aug. 31, 1887	206	June 25, 1888	210

Sheet No. 4 of 4 Primary sheets
 and 2 supplemental sheets
 of C&N.W.R. from survey
 station 2534+68 to station 2710+69

GENOA JCT, WIS. TO WILLIAMS BAY, WIS

RIGHT OF WAY AND TRACK MAP
 CHICAGO AND NORTH-WESTERN RAILWAY
 OPERATED BY THE
 C.&N.W.R.Y. CO.
 GALENA DIVISION

SCALE: 1" = 400 FT.
 OFFICE OF CHIEF ENGINEER
 CHICAGO, ILL.

JUNE 30, 1917

