

T 49N R 14W

FIFTY SECOND

FIFTY FIFTH

FIFTY FOURTH

FIFTY THIRD

FIFTY SECOND

Match Mark for Wis. C.R. MAP S-1-A 9+84
MAP S-1-B

T 49N R 14W

WALKER AVENUE

FORTY-SECOND

FORTY-FIRST

FORTY

THIRTY-NINTH

THIRTY-EIGHTH

THIRTY-SEVENTH

THIRTY-SIXTH

THIRTY-FIFTH

THIRTY-FOURTH

THIRTY-THIRD

THIRTY-SECOND

THIRTY-FIRST

THIRTY

THIRTY-NINTH

THIRTY-EIGHTH

THIRTY-SEVENTH

THIRTY-SIXTH

THIRTY-FIFTH

THIRTY-FOURTH

THIRTY-THIRD

BECKER

STINSON

STINSON

STINSON

STINSON

STINSON

STINSON

STINSON

STINSON

STINSON

STINSON

STINSON

STINSON

STINSON

STINSON

STINSON AVE. YARDS

CATLIN

BALOC

DUDLEY

ARRETT

STINSON

STINSON

STINSON

STINSON

STINSON

STINSON

STINSON

STINSON

STINSON

STINSON

STINSON

STINSON

STINSON

STINSON

STINSON

FISHER

PARK

PARK

PARK

PARK

PARK

PARK

PARK

PARK

PARK

PARK

PARK

PARK

PARK

PARK

PARK

PARK

PARK

PARK

NEEDS

STREET

STREET

STREET

STREET

STREET

STREET

STREET

STREET

STREET

STREET

STREET

STREET

STREET

STREET

STREET

STREET

STREET

STREET

STREET

STREET

STREET

STREET

STREET

STREET

STREET

STREET

STREET

STREET

STREET

STREET

STREET

STREET

STREET

STREET

STREET

STREET

STREET

STREET

STREET

STREET

STREET

STREET

STREET

STREET

STREET

STREET

STREET

STREET

STREET

STREET

STREET

STREET

STREET

STREET

STREET

STREET

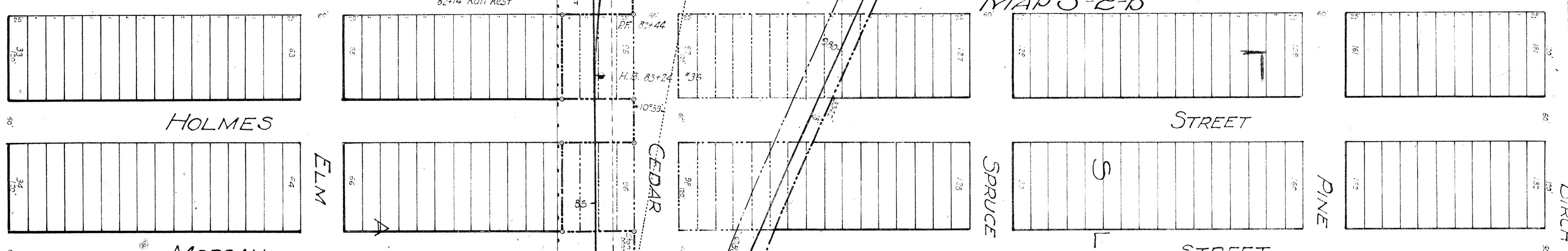
Match Mark 94+35 MAP S-1-b



Match Mark 500 Line

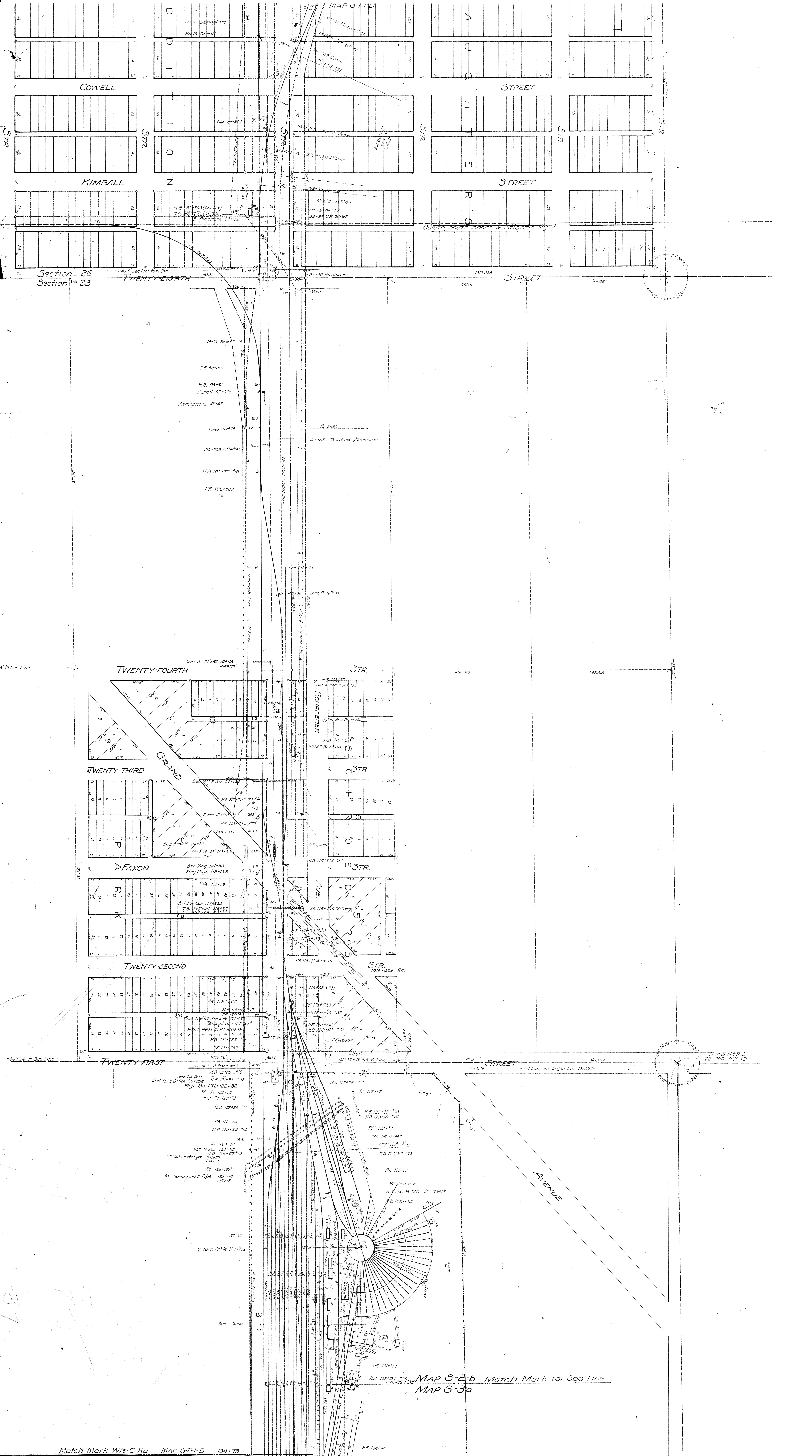
MAP 5-2-a

MAP 5-2-b



Match Mark Wis.C.R.

MAP 5-1-C



Section 26
Section 23

Section 26
Section 23

TWENTY-FOURTH

TWENTY-THIRD

TWENTY-SECOND

TWENTY-FIRST

STREET

AVENUE

H.B. 121+38.5
End Year 1 Office
Fig. 3 on 101.122+32
15 PF 122+32
12 PF 122+32
H.B. 122+36
PF 123+34
H.B. 123+33
PF 124+34
W.C. 45' x 15' 124+40
H.B. 124+40
60" Concrete Pipe 124+57
124+75
PF 125+26.5
48" Corrugated Pipe 125+103
125+13

H.B. 122+25
PF 122+82
H.B. 123+23
H.B. 123+30
PF 123+87
10 PF 123+87
1022+122.87
H.B. 124+67
PF 125+21
PF 125+45.8
H.B. 125+49
PF 126+15
R. 126+14.5
PF 127+21
H.B. 127+21
PF 127+21

MAP S-2-b Match Mark for 300 Line
MAP S-3a

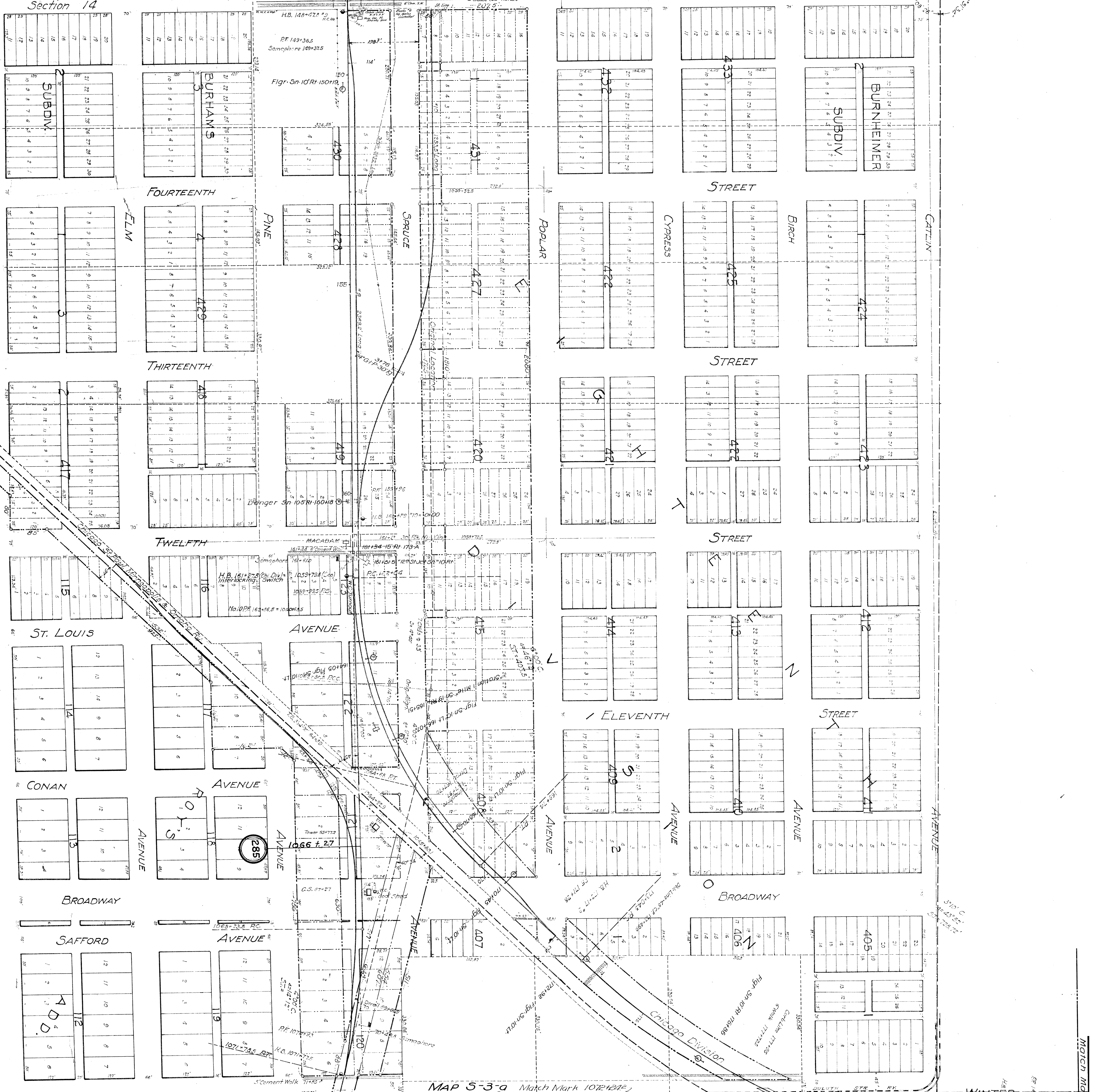
BELKNAP STR YARD

- RF 137+76
- H.B. 138+32 *21
- DF 138+42B
- H.B. 139+00 *30
- RF 139+21
- RB 139+795 *19
- RF 140+02
- PC 1037+520
- H.B. 140+36 *18
- RF 140+66.5
- H.B. 141+42 *17
- RF 141+64
- H.B. 142+20 *16
- RF 142+37
- H.D. 142+94 *15
- RF 143+10.5
- H.B. 143+52 *14
- RF 143+76.5
- H.B. 144+34 *13
- DF 144+56.5
- Figr-Sn 1071-144+183
- H.B. 145+02 *12
- RF 145+17 *10
- PT 1043+286
- H.D. 146+20 *11

- H.B. 135+90
- H.B. 136+49 *23
- PF 136+64
- H.B. 137+12 #27
- H.B. 137+14 #22
- PF 137+16

Section 23

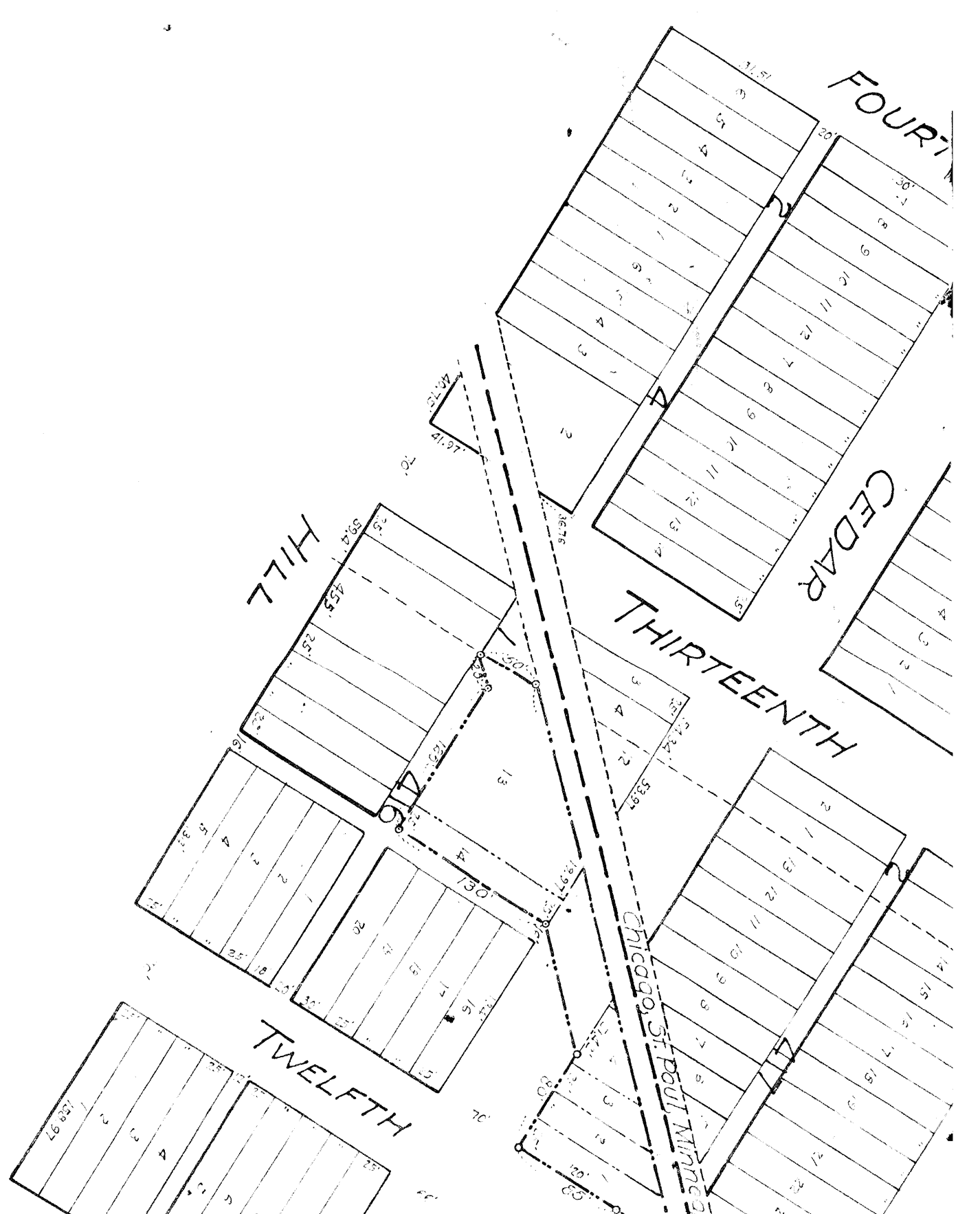
Section 14

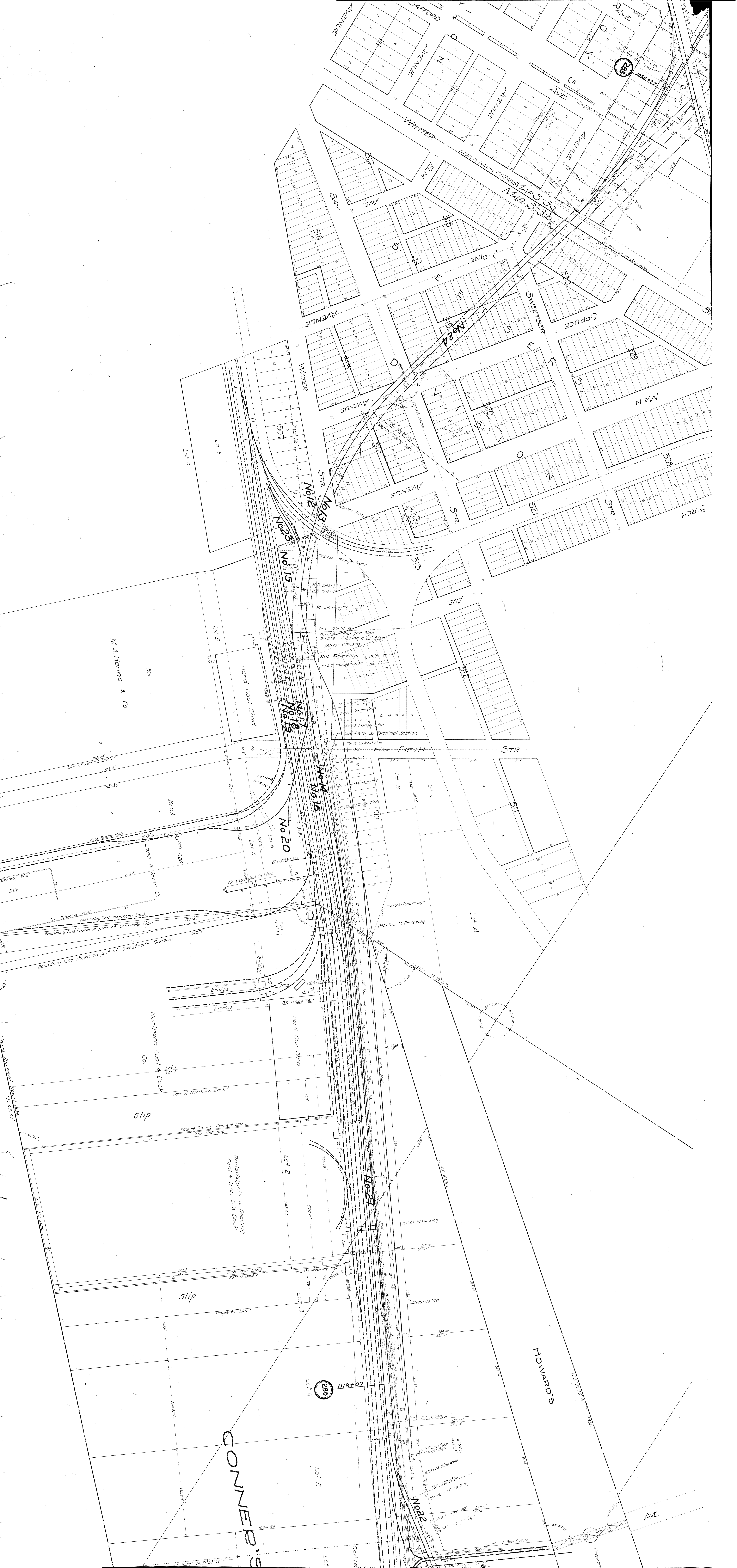


MAP 5-3-a Match Mark 102422

MAP 5-3-b

MAP 5-3-b
MAP ST-2A
MATCH MARK 102422





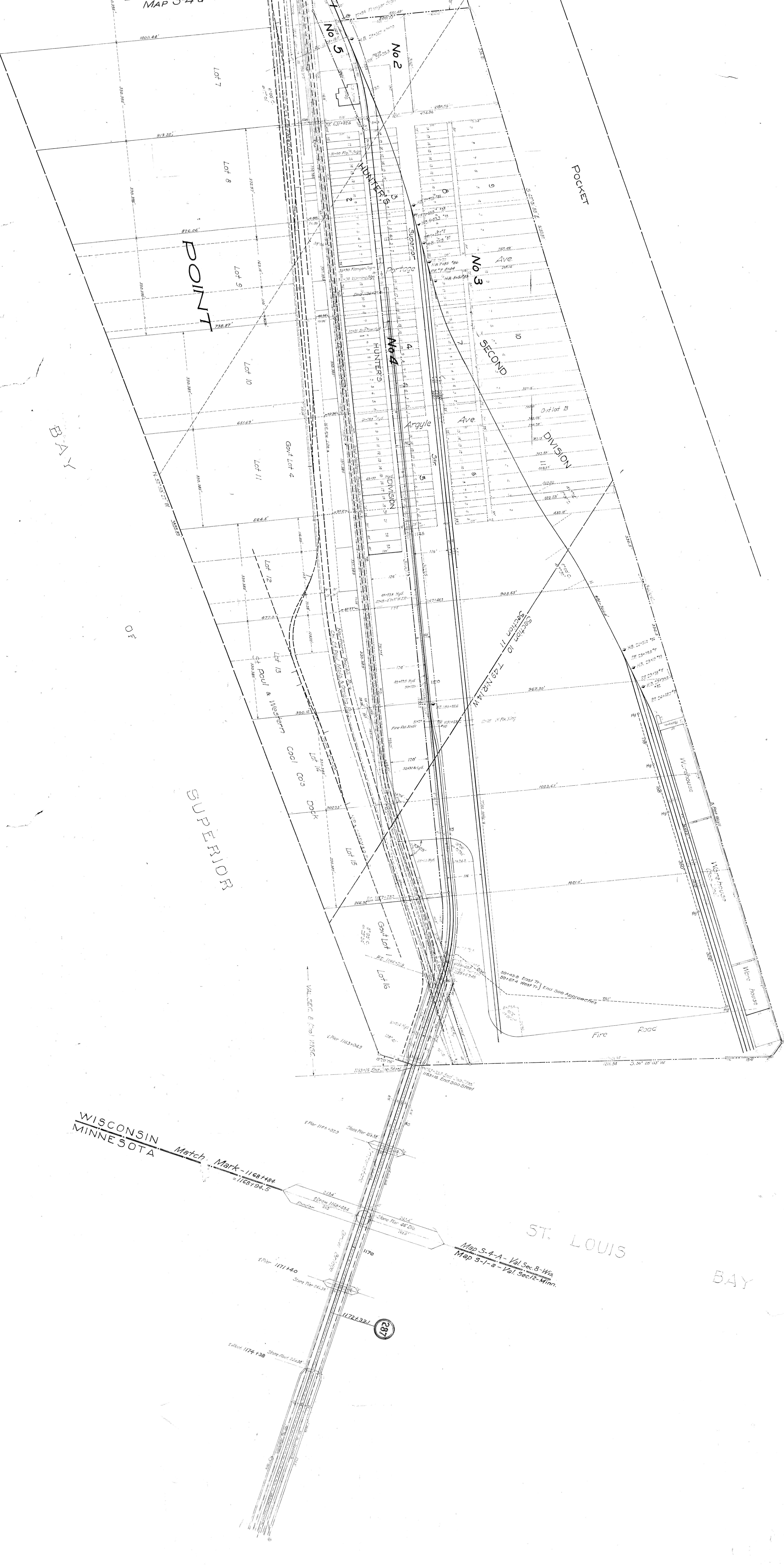
JAFFORD AVENUE
WINTER AVENUE
BAY AVENUE
WATER AVENUE
PINE AVENUE
SWEETSEYER AVENUE
SPRUCE AVENUE
MAIN AVENUE
BIRCH AVENUE
FIFTH STR.

No. 1
No. 2
No. 3
No. 4
No. 5
No. 6
No. 7
No. 8
No. 9
No. 10
No. 11
No. 12
No. 13
No. 14
No. 15
No. 16
No. 17
No. 18
No. 19
No. 20
No. 21
No. 22
No. 23
No. 24

M.A. Hanna & Co.
Hard Coal Shed
Slip
Block
Land & River Co.
Northern Coal & Dock
Slip
Face of Northern Dock
Face of Dock
Philadelphia & Reading Coal & Iron Co's Dock
Slip
Face of Dock
Propriety Line

HOWARD'S
CONNER'S
LOT 4
LOT 5
LOT 6
LOT 7
LOT 8
LOT 9
LOT 10
LOT 11
LOT 12
LOT 13
LOT 14
LOT 15
LOT 16
LOT 17
LOT 18
LOT 19
LOT 20
LOT 21
LOT 22
LOT 23
LOT 24

Line 2
Line 3
Line 4
Line 5
Line 6
Line 7
Line 8
Line 9
Line 10
Line 11
Line 12
Line 13
Line 14
Line 15
Line 16
Line 17
Line 18
Line 19
Line 20
Line 21
Line 22
Line 23
Line 24



BAY

POINT

SUPERIOR

POCKET

ST. LOUIS

BAY

WISCONSIN
MINNESOTA

Match Mark - 1168+484
= 1168+94.5

Map 5-4-A - Val. Sec. 8 - Wis.
Map 5-1-a - Val. Sec. 12 - Minn.

287