

INDEX MAP VALUATION SECTION 505 WISCONSIN

6	5	4	3	2	1
7	8	9	10	11	12
13	14	15	16	17	18
19	20	21	22	23	24
25	26	27	28	29	30
31	32	33	34	35	36

BARRON CO. WISCONSIN

6	5	4	3	2	1
7	8	9	10	11	12
13	14	15	16	17	18
19	20	21	22	23	24
25	26	27	28	29	30
31	32	33	34	35	36

DODGE CO. WISCONSIN

6	5	4	3	2	1
7	8	9	10	11	12
13	14	15	16	17	18
19	20	21	22	23	24
25	26	27	28	29	30
31	32	33	34	35	36

0106 Beg Val Sec 5 Wis.

Map No. 1

211+20

Map No. 2

222+90

Map No. 3

233+60

Map No. 4

244+90

Map No. 5

255+616 End of Val Sec 5 Wis.

T. 34 N.

T. 33 N.

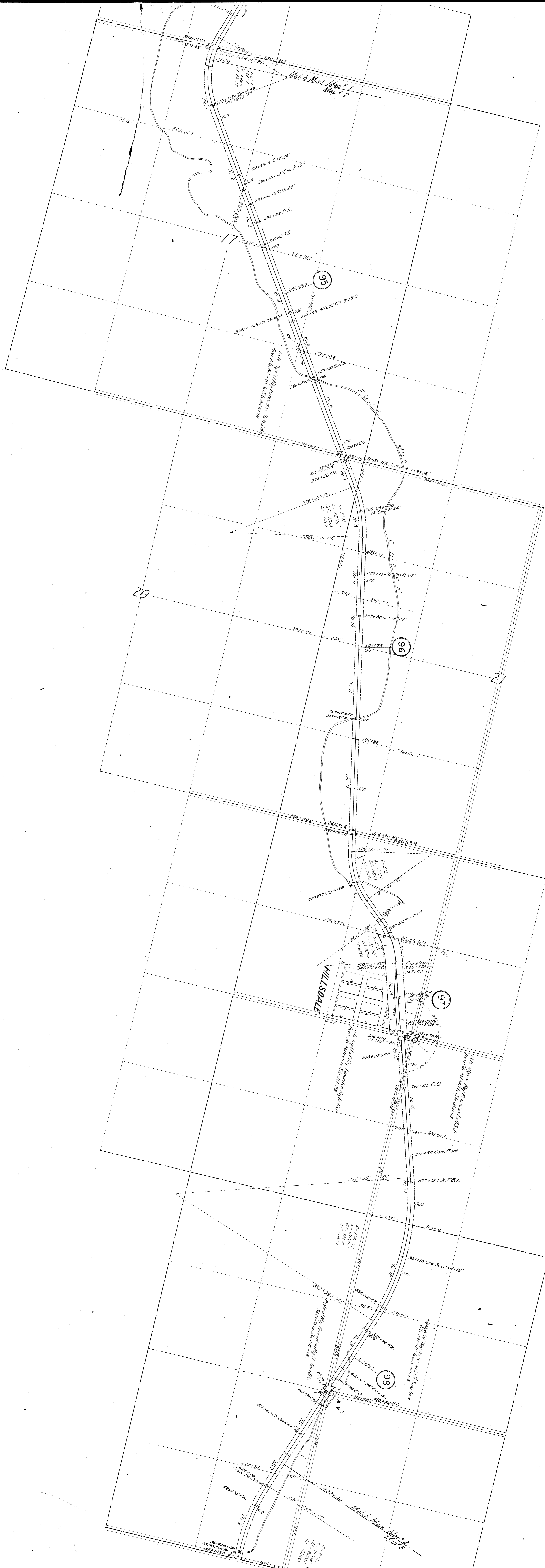
TOWN OF BARRON

TOWN OF MAPLE GROVE

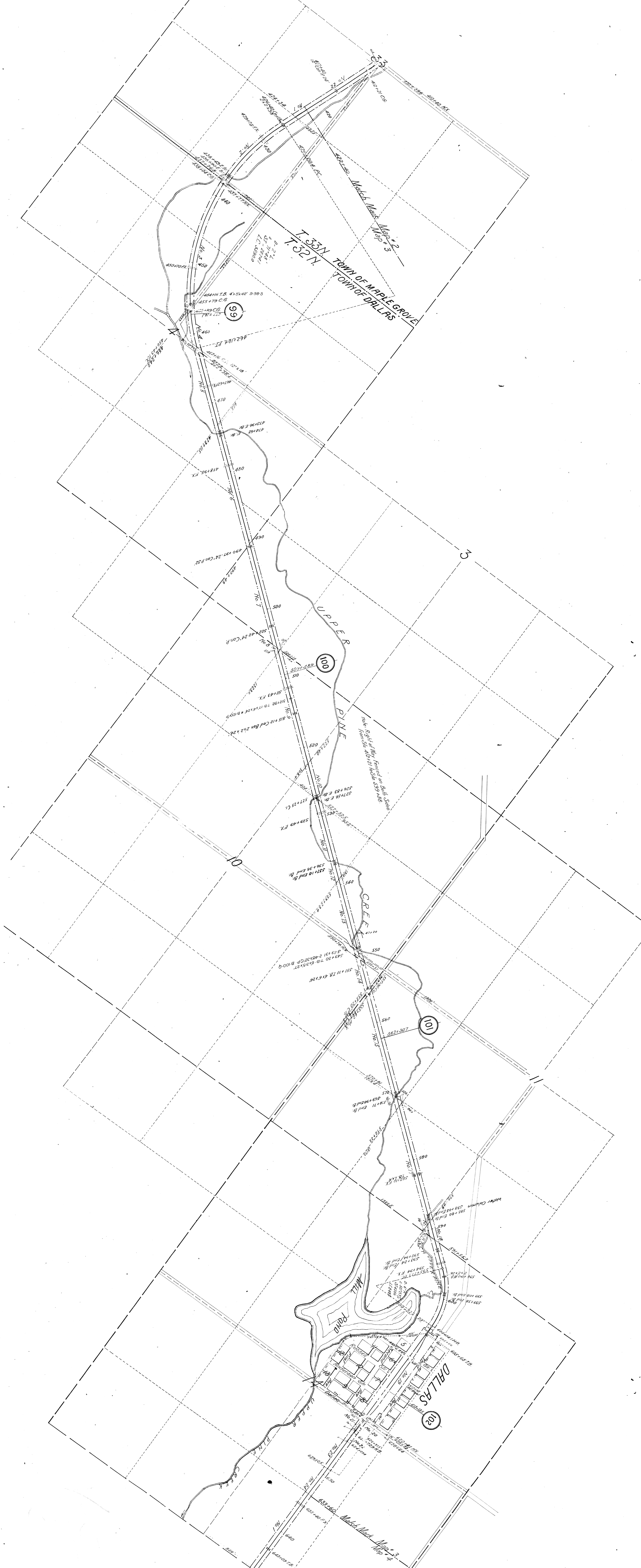
Match Mark Map #1

Map #2

Match Mark Map # 1  
Map # 2



TOWNSHIP OF MAPLE GROVE T. 33 N.  
CITY OF DALLAS T. 32 E.



T. 35N  
R. 7E  
TOWN OF MAPLE GROVE  
TOWN OF DALLAS

UPPER  
PINE  
CREEK

DALLAS  
MILL  
POND

99

100

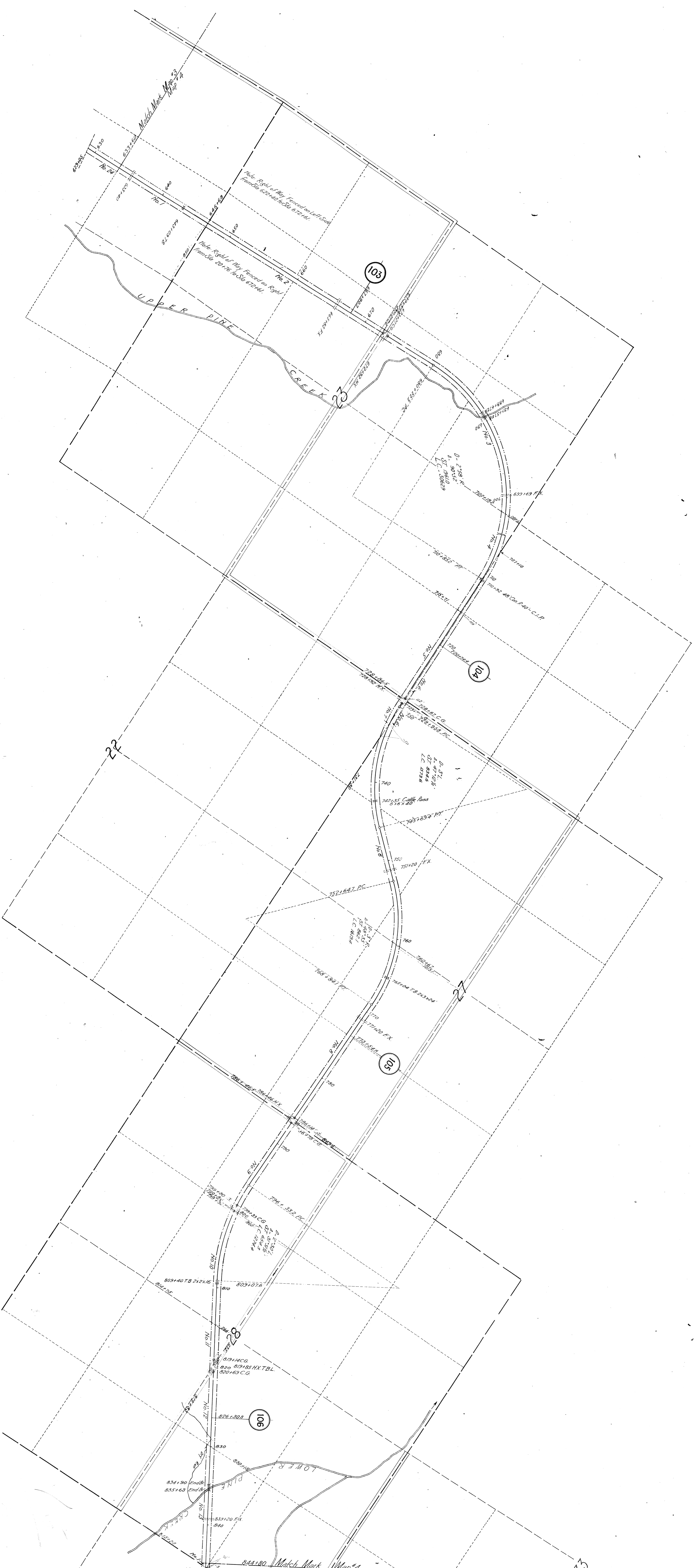
101

103

Note: Right of Way Fenced on Both Sides  
from State Map of 1856 99+38

Note: Right of Way Fenced on Both Sides  
from State Map of 1856 99+38

Note: Right of Way Fenced on Both Sides  
from State Map of 1856 99+38



Match Mark Map #3  
Map #4

22

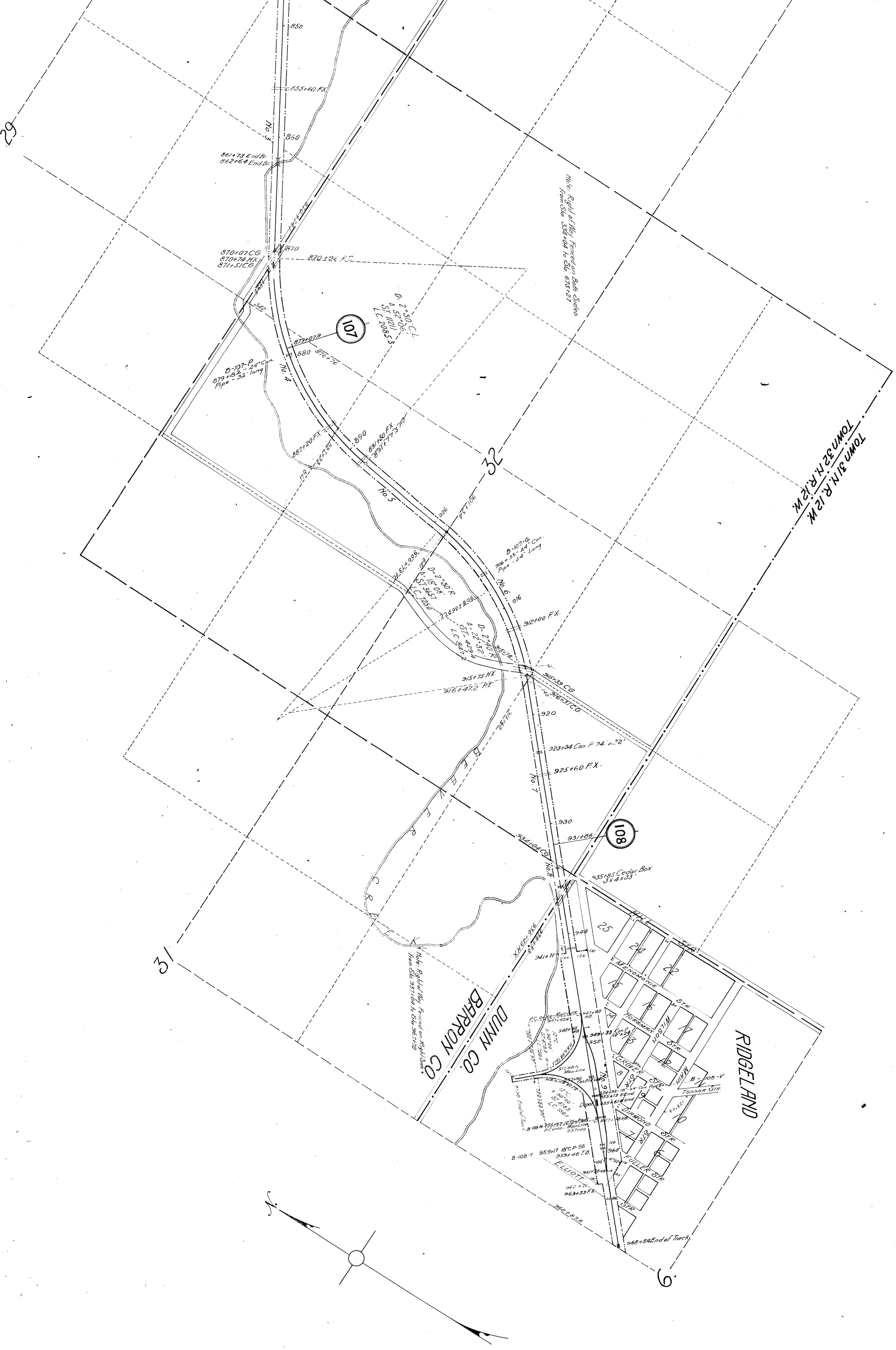
103

104

105

105

Match Mark Map #4  
Map #5



**RIGHT-OF-WAY AND TRACK MAP**  
**MINNEAPOLIS, ST. PAUL & SAULT STE. MARIE RY.**  
 Operated by the  
**MINNEAPOLIS, ST. PAUL & SAULT STE. MARIE RY.**  
**BARRON TO RIDGELAND**  
**BARRON and DUNN COUNTIES WISCONSIN**

Station 0+00 to Sta. 968+876  
 Mile Post 30+1924.6 to Mile Post 108+3701.6  
 Scale—1 in. = 400 ft. August 16-1916.  
 Office of Wisconsin Engineer  
 Minneapolis, Minn.  
 Drawn by Elmer E. Fries—Checked by George E. Fries.  
 Checked by: F. C. Oser—1916.

PLAN 30241  
 FILE D-53-P-2