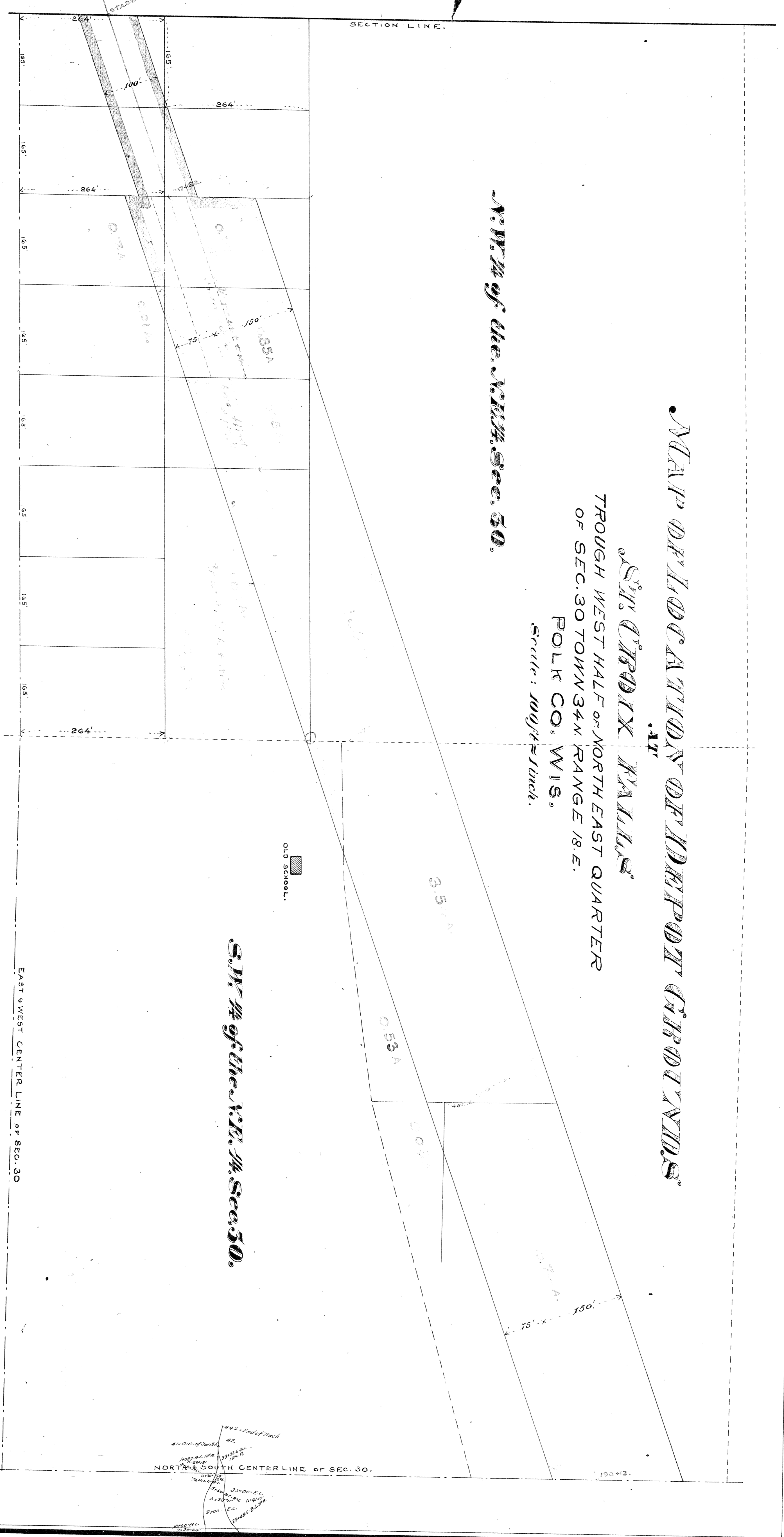


MAP OF LOCATION OF HENRY CAROTINS

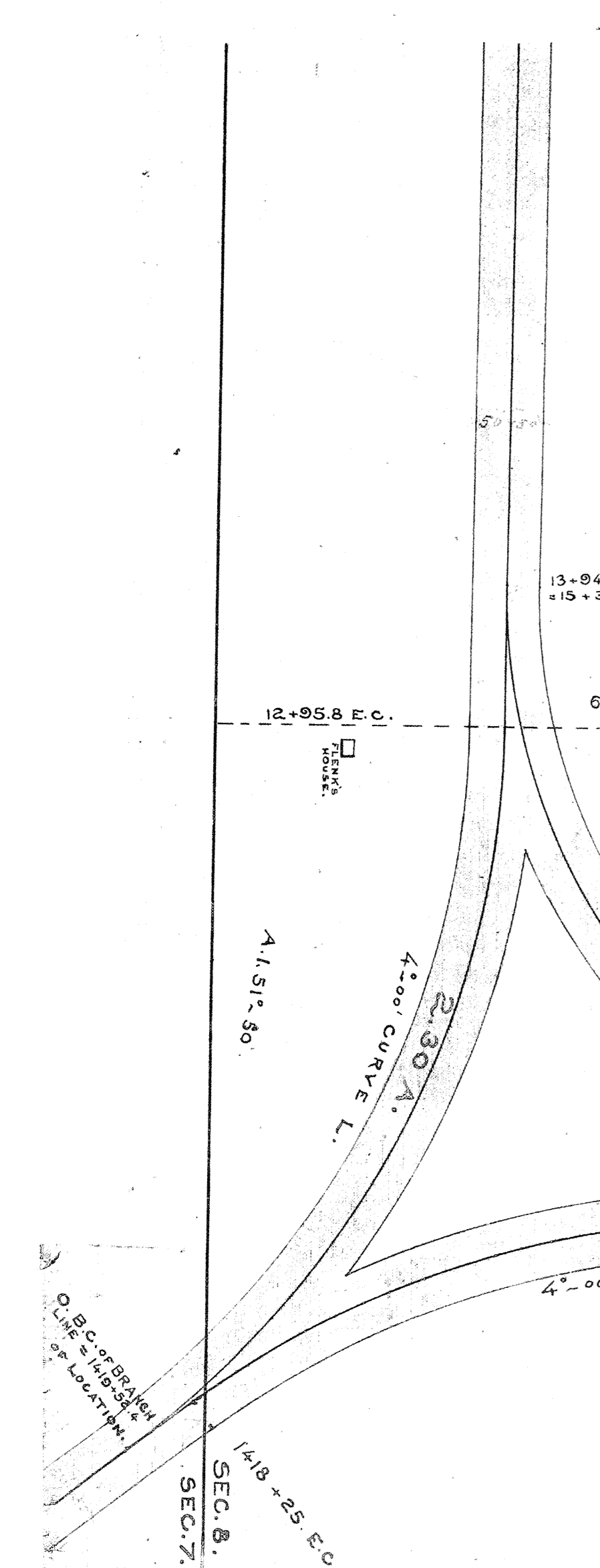
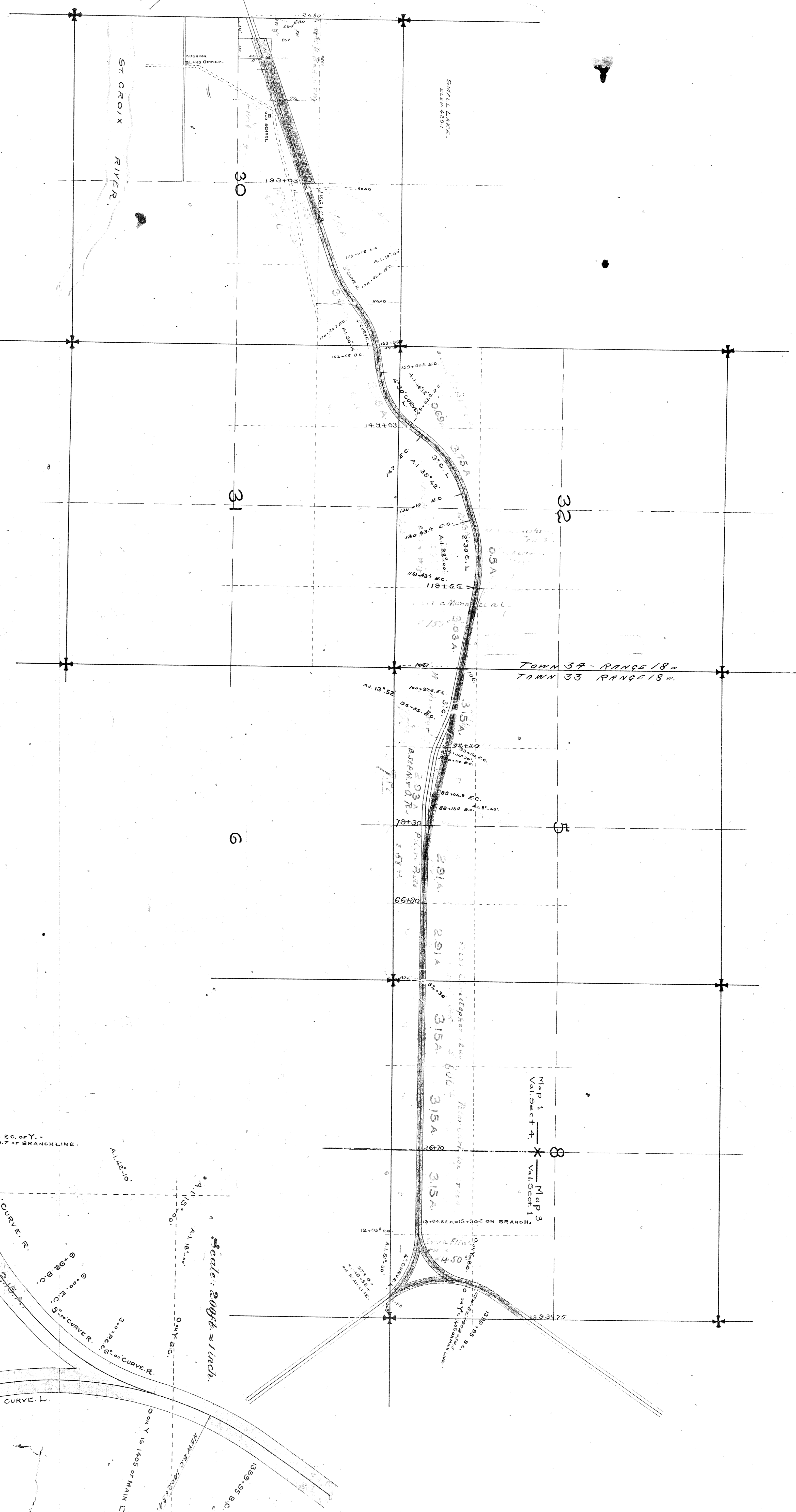
THROUGH WEST HALF OF NORTH EAST QUARTER
OF SEC. 30 TOWN 34 N. RANGE 18 E.
POLK CO. WIS.
Scale: 100ft = 1 inch.

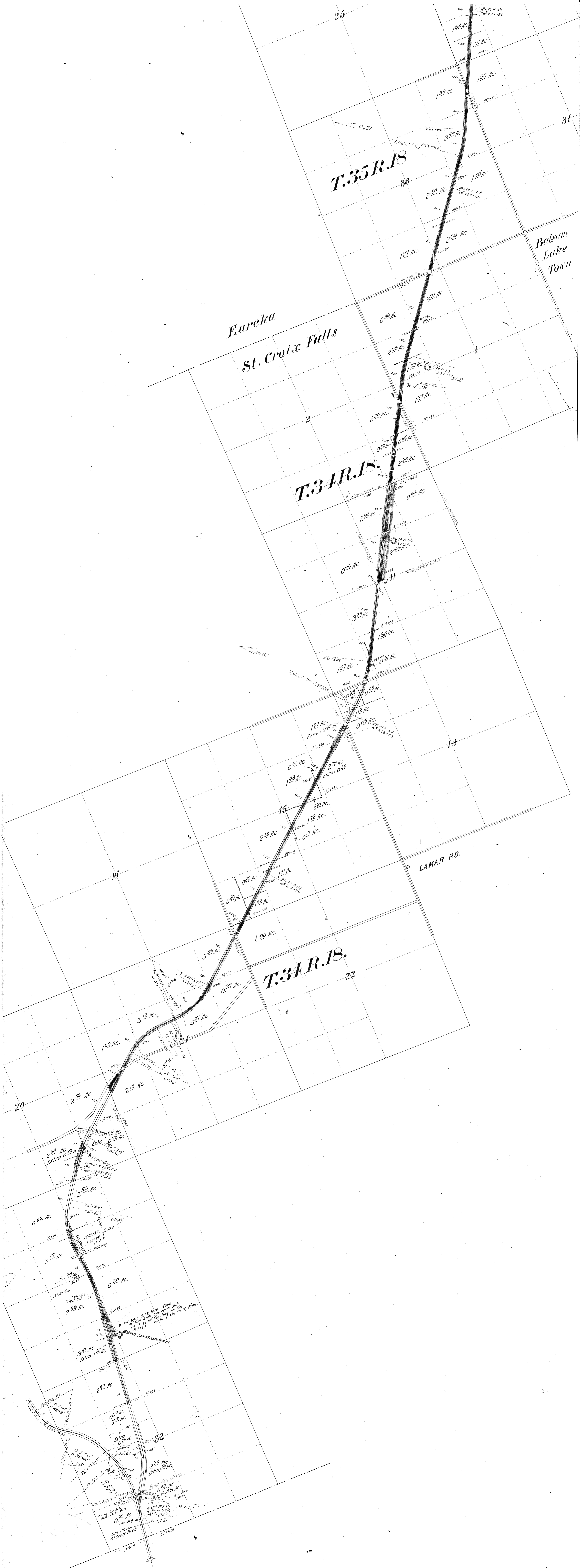
NW 1/4 of the NW 1/4 Sec. 50.

SW 1/4 of the NE 1/4 Sec. 50.



M.S. STE. M. & A. RY.
MAP SHOWING RIGHTS OF WAY
OF THE ST. CROIX FALLS BRANCH.
Scale: 800ft = 1 inch.





T.35R.18

Eureka
St. Croix Falls

Balsam
Lake
Town

T.34R.18.

LAMAR PD.

T.34R.18.

T.36 R.17.

Little Butternut Lake.

Big Butternut Lake.

Luck Milltown

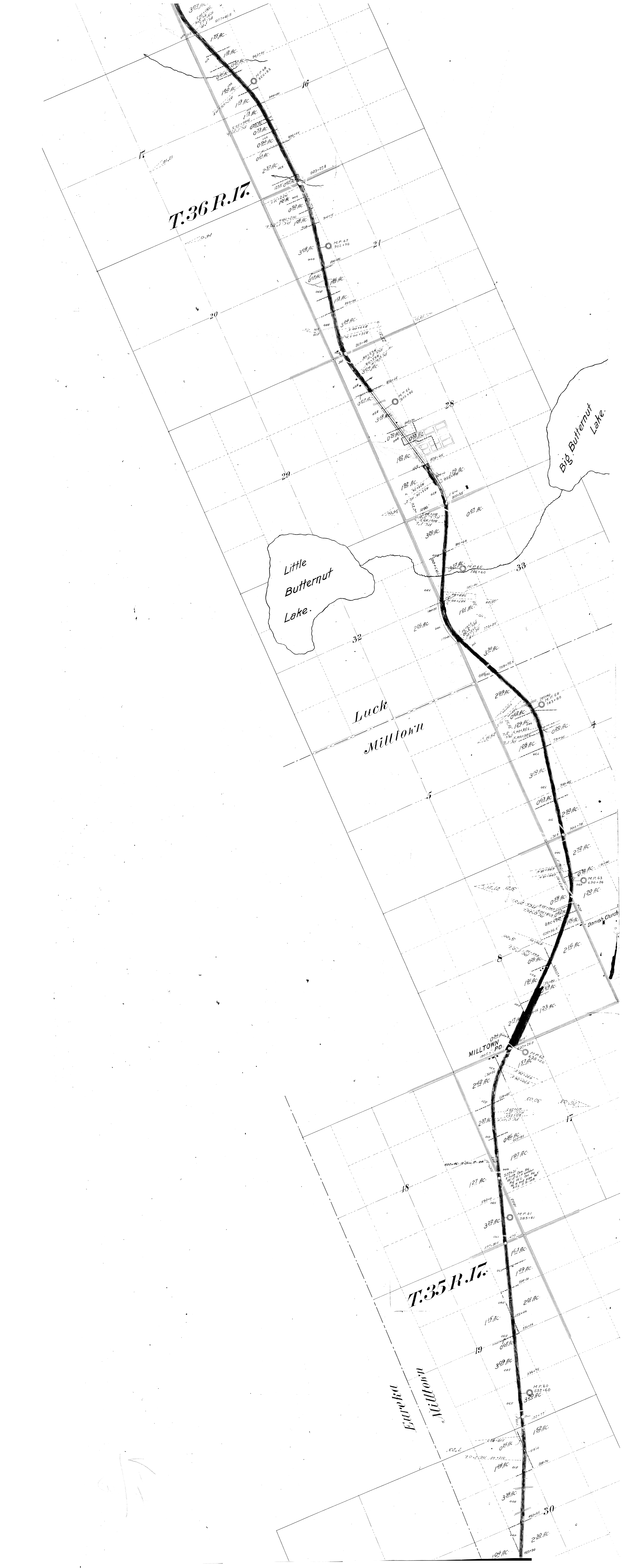
MILLTOWN P.O.

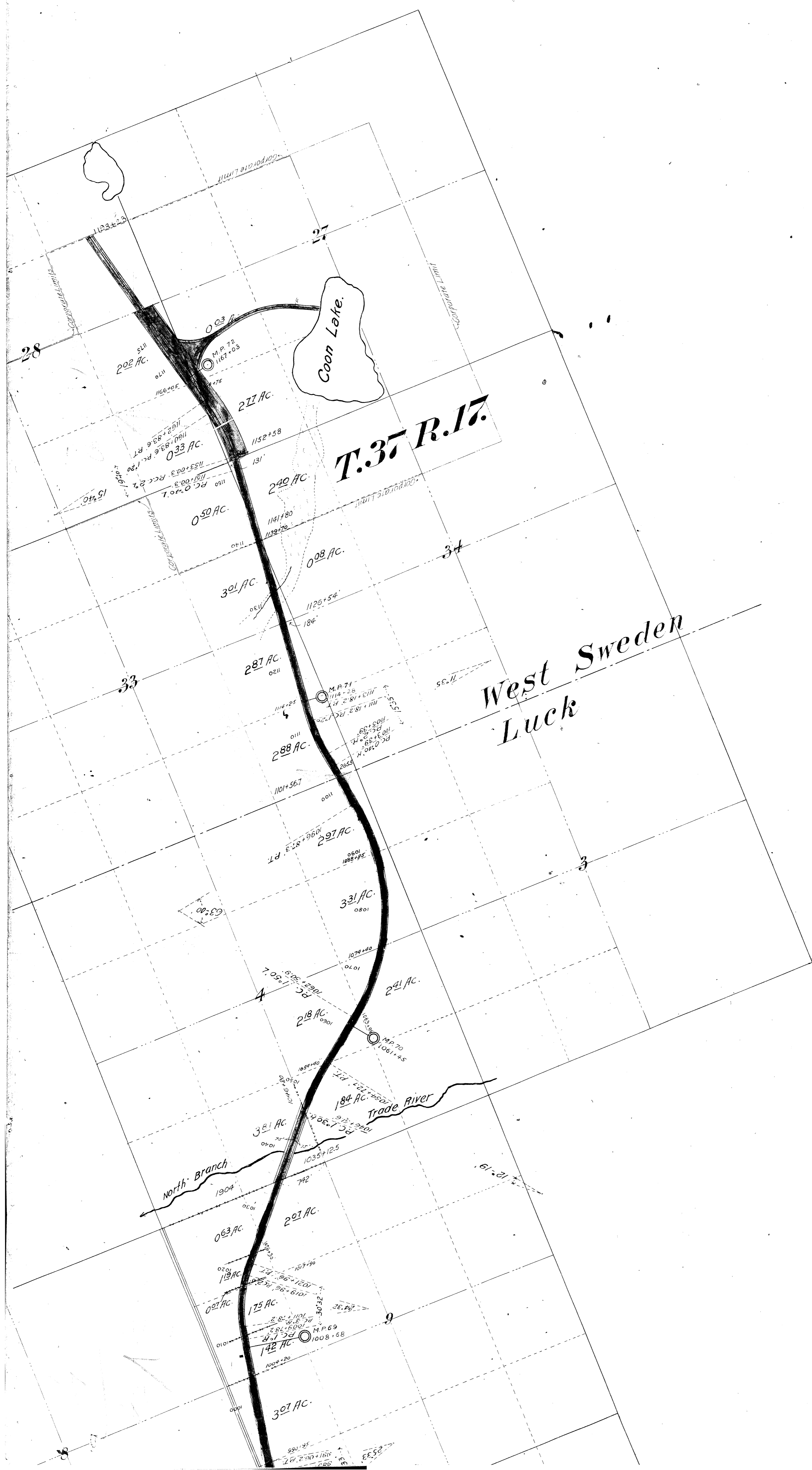
Danish Church

T.35 R.17.

Eureka Milltown

Handwritten mark resembling a stylized 'A' or '1' with an arrow pointing upwards.





M. STP. S. SMRY

RIGHT OF WAY
MAP

FREDERIC EXTENSION
— THROUGH —

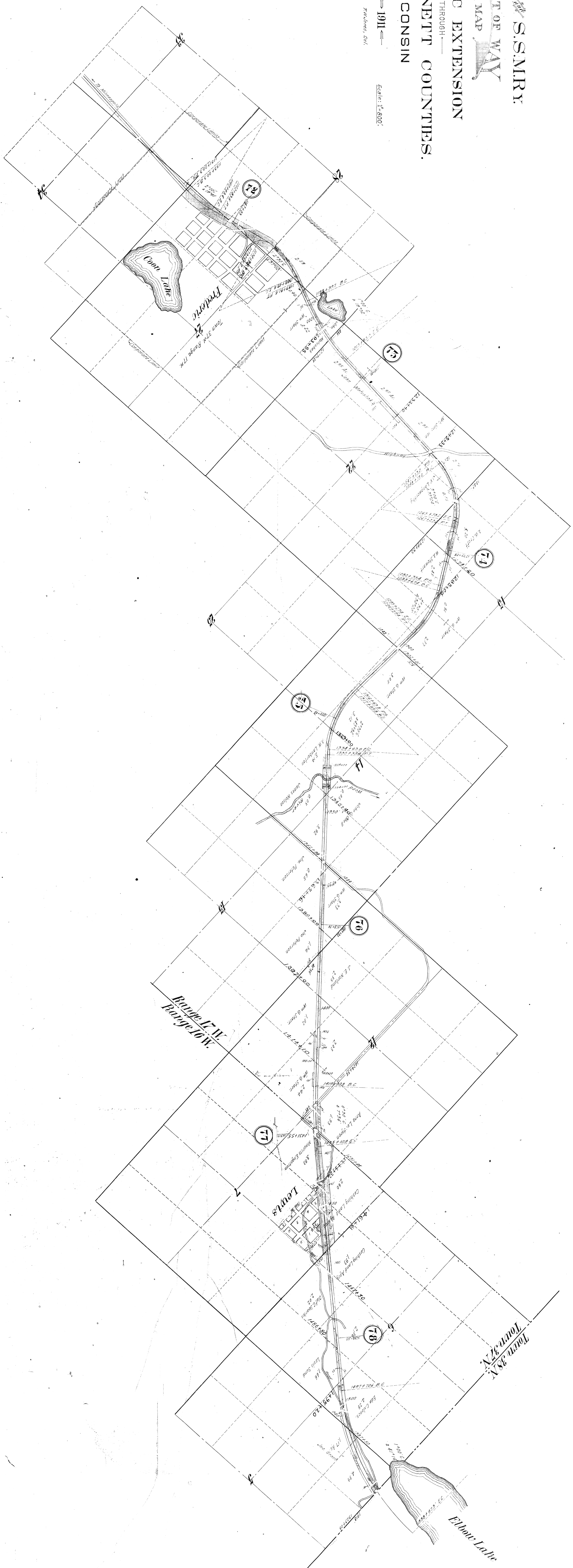
POLK AND BURNETT COUNTIES,
WISCONSIN

Minneapolis, Minn.

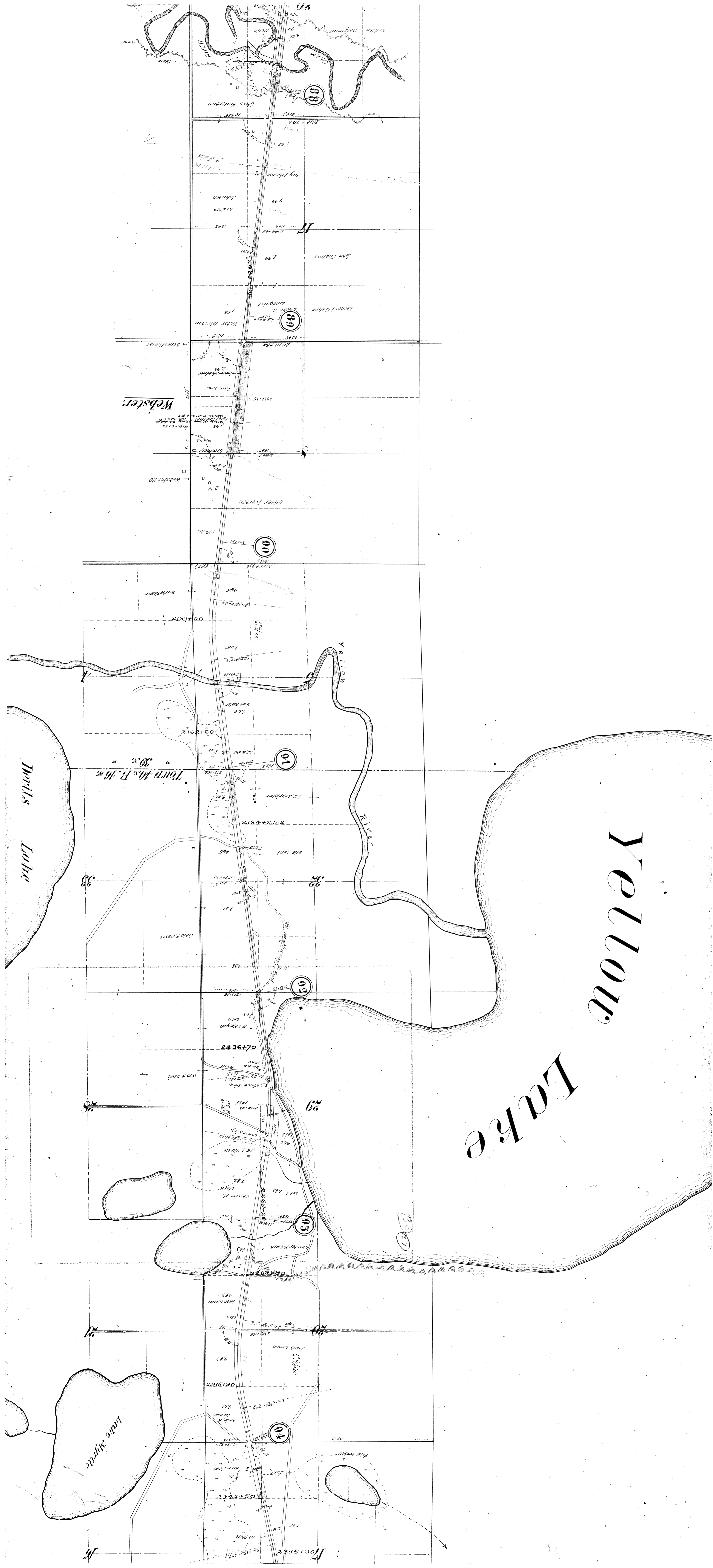
1911

Frederic, Wis.

Scale: 1"=800'



Burnett Co.
Polk Co.



Yellow Lake

Lake

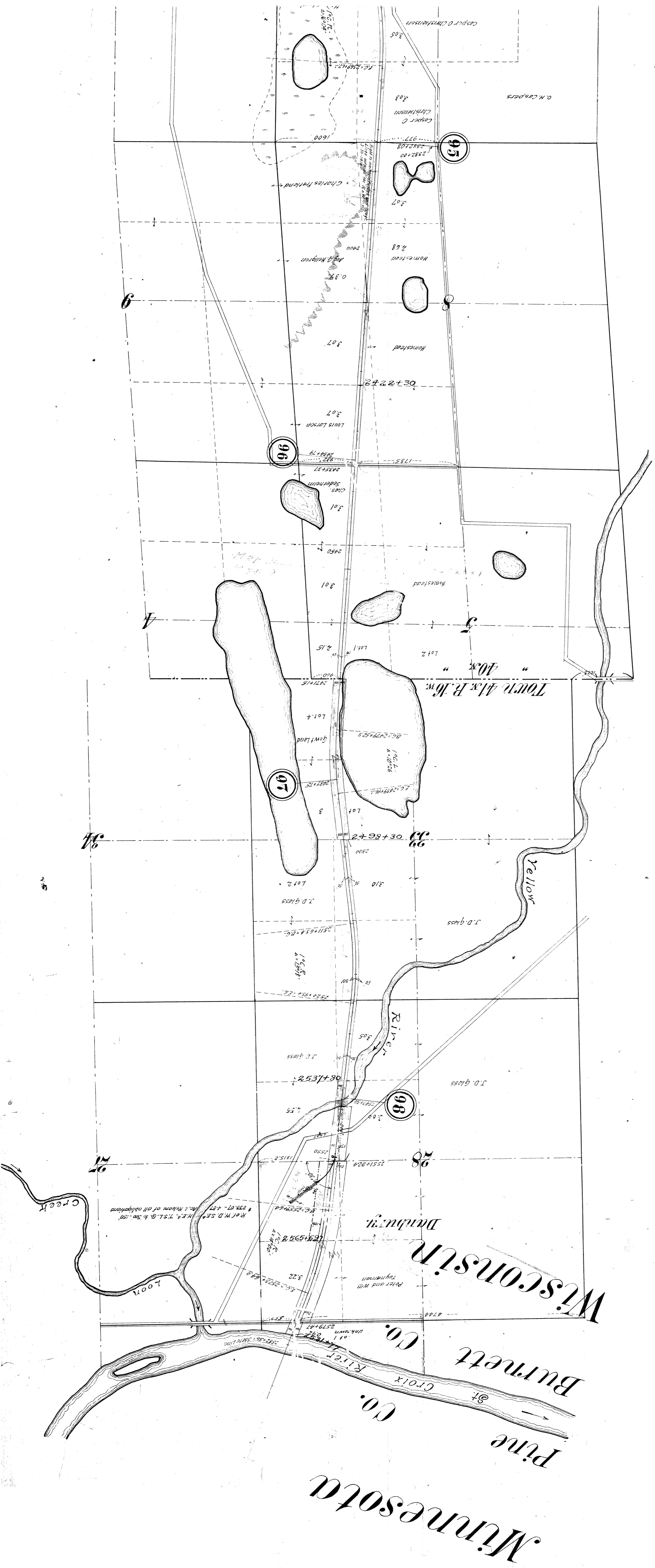
Devils Lake

Lake Myrtle

Town 40x R. 16w
39x

Webster

Map details including lot numbers (e.g., 100, 99, 98, 97, 96, 95, 94, 93, 92, 91, 90, 89, 88), owner names (e.g., Andrew Johnson, John Chelmo, Leonard Chelmo, Victor Johnson, Oliver Larson, Mrs. Webster, Mrs. Schindler, Mrs. King, Mrs. Nichols, Chester M. King, Chester M. King), and survey data (e.g., 2017 176, 2017 175, 2017 174, 2017 173, 2017 172, 2017 171, 2017 170, 2017 169, 2017 168, 2017 167, 2017 166, 2017 165, 2017 164, 2017 163, 2017 162, 2017 161, 2017 160, 2017 159, 2017 158, 2017 157, 2017 156, 2017 155, 2017 154, 2017 153, 2017 152, 2017 151, 2017 150, 2017 149, 2017 148, 2017 147, 2017 146, 2017 145, 2017 144, 2017 143, 2017 142, 2017 141, 2017 140, 2017 139, 2017 138, 2017 137, 2017 136, 2017 135, 2017 134, 2017 133, 2017 132, 2017 131, 2017 130, 2017 129, 2017 128, 2017 127, 2017 126, 2017 125, 2017 124, 2017 123, 2017 122, 2017 121, 2017 120, 2017 119, 2017 118, 2017 117, 2017 116, 2017 115, 2017 114, 2017 113, 2017 112, 2017 111, 2017 110, 2017 109, 2017 108, 2017 107, 2017 106, 2017 105, 2017 104, 2017 103, 2017 102, 2017 101, 2017 100).



Plan - 3225
 178-17252

Boys and Burnett