





Note - Right of Way fenced on left side from Sta. 1207+10 to Sta. 1208+58 from No. 164.

MAP S-3

# STARKS

(227)

(228)

(229)

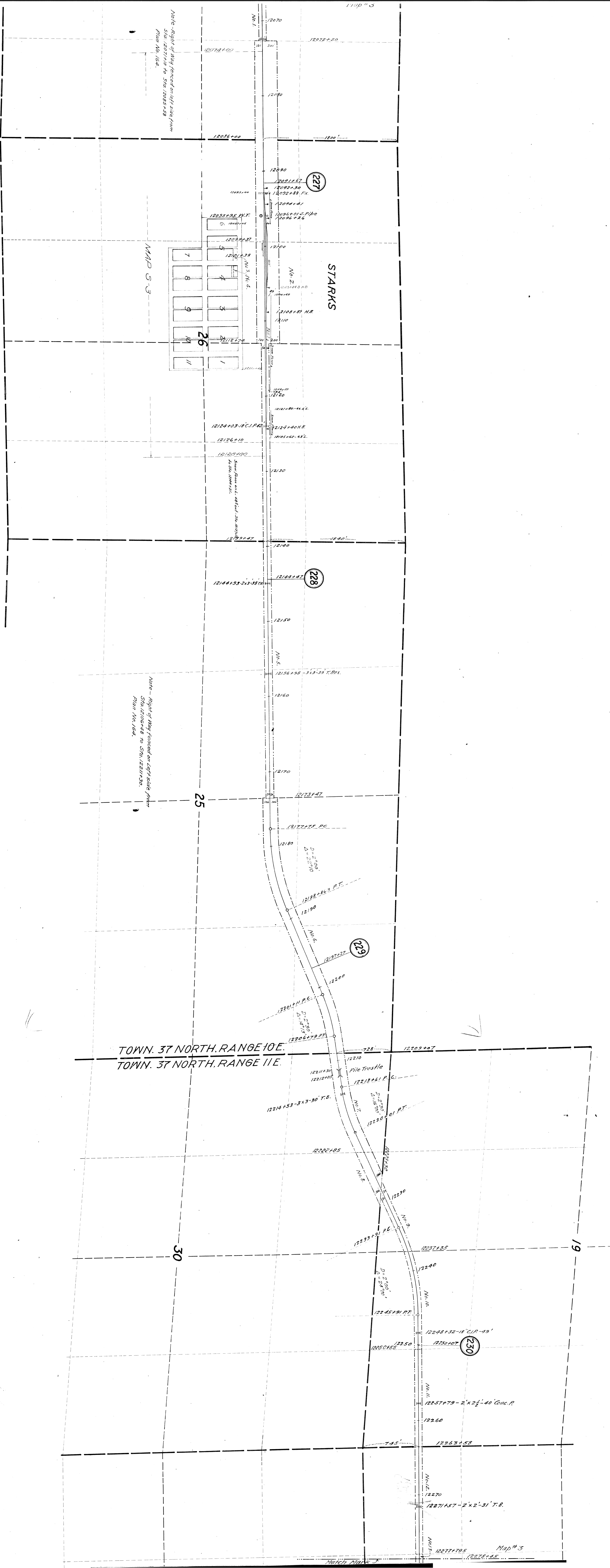
(230)

TOWN. 37 NORTH, RANGE 10E.  
TOWN. 37 NORTH, RANGE 11E.

30

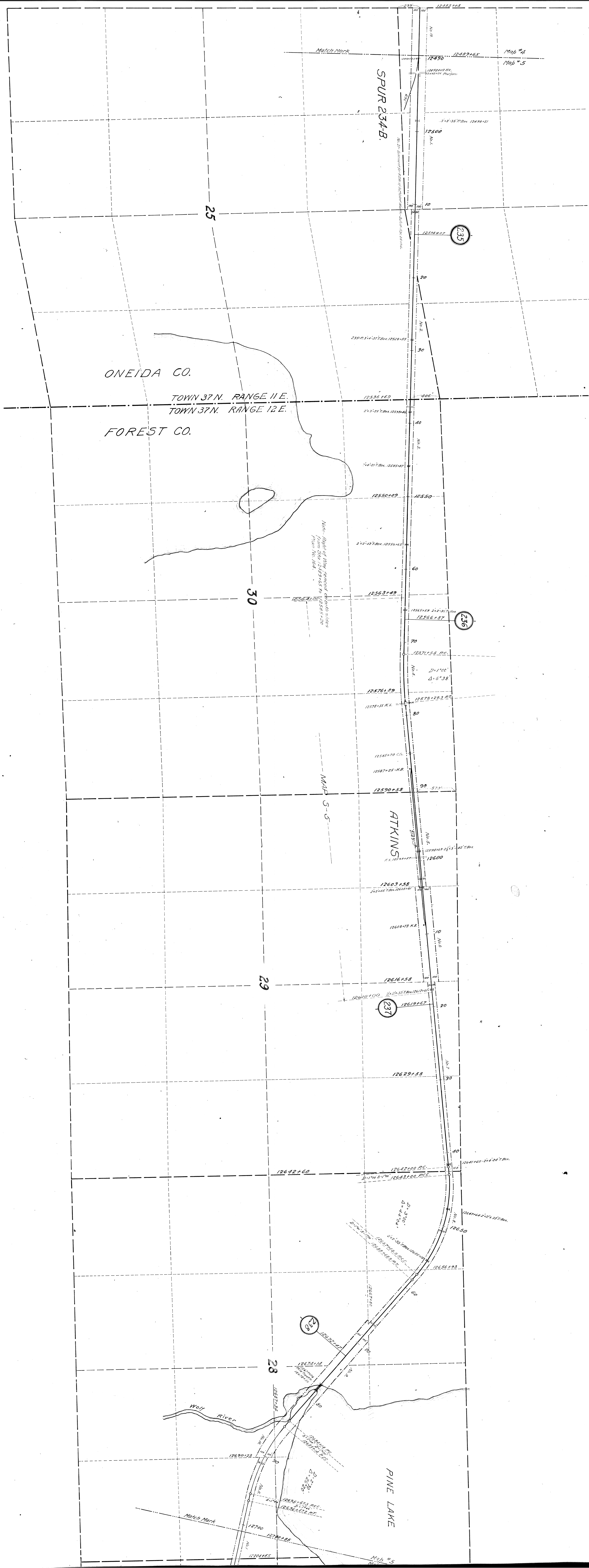
19

Note - Right of Way fenced on left side from Sta. 12106+48 to Sta. 12211+30 from No. 164.









Match Mark

SPUR 234-B

Map #4  
Map #5

25

ONEIDA CO.

TOWN 37 N. RANGE 11 E.  
TOWN 37 N. RANGE 12 E.

FOREST CO.

30

MAP S-5

ATKINS

29

12642+60

237

28

Wolf River

PINE LAKE

Match Mark

Map #5





WIS. & NOR. RY. JUNC.

MAP S-6

MAP S-7

MAP S-7

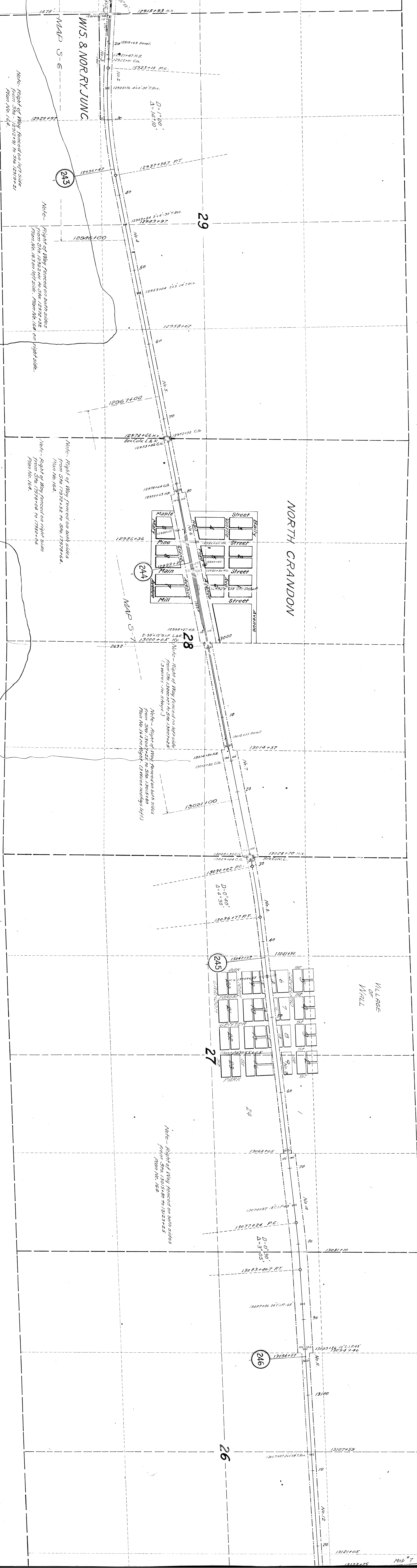
MAP S-7

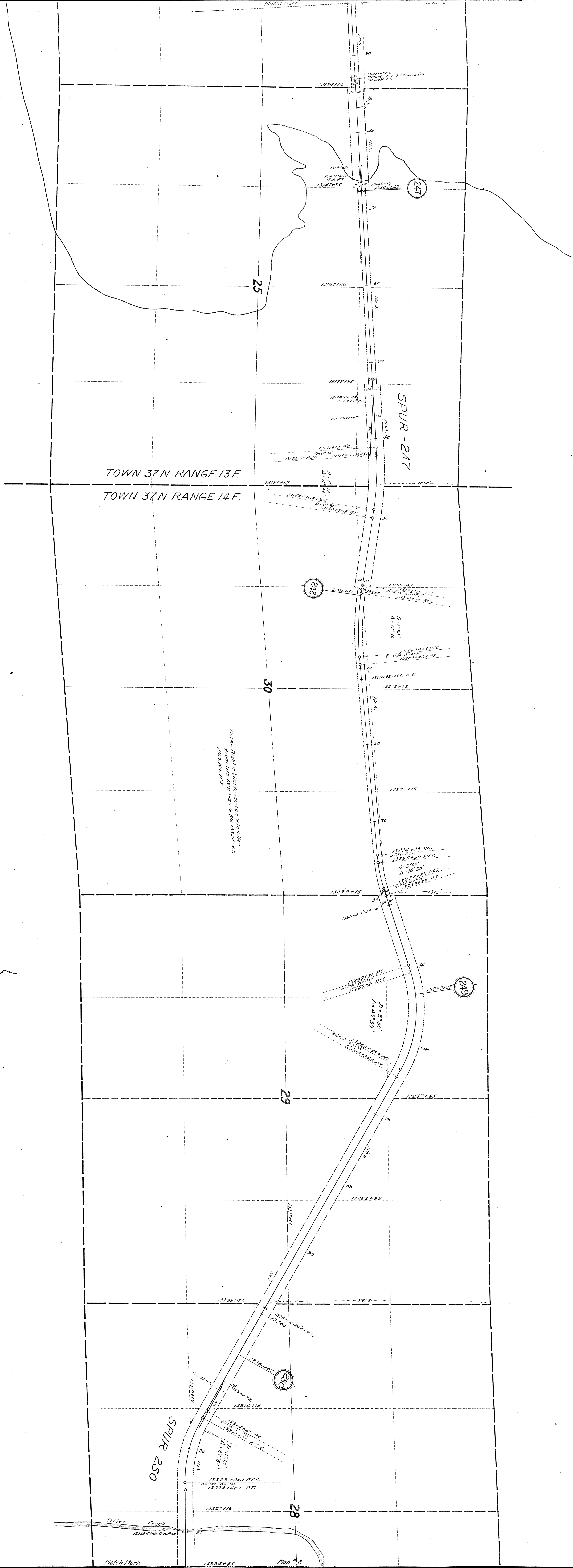
MAP S-7

MAP S-7

MAP S-7

MAP S-7





TOWN 37N RANGE 13E.  
TOWN 37N RANGE 14E.

Note - Right Way fenced on both sides  
from Sta. 13238.25 to Sta. 13334.45  
from No. 104.

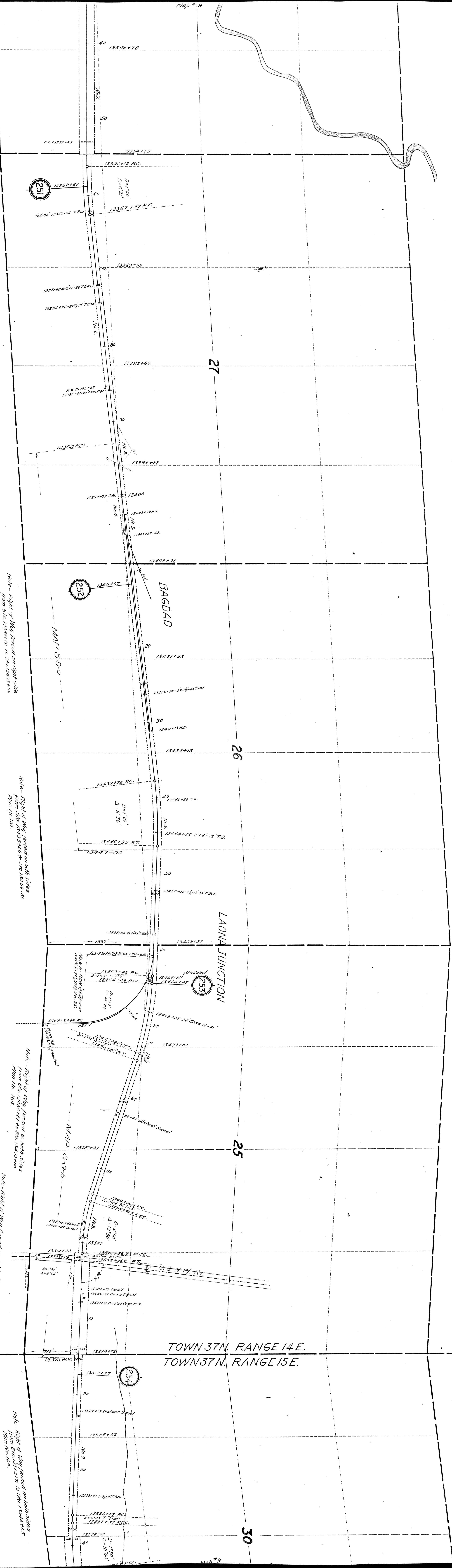
SPUR 250

Match Mark

Map No. 6



Note - Right of Way fenced on both sides from Sta. 13354+45 to Sta. 13399+72 from No. 164.



Note - Right of Way fenced on right side from Sta. 13399+72 to Sta. 13433+46 from No. 164.

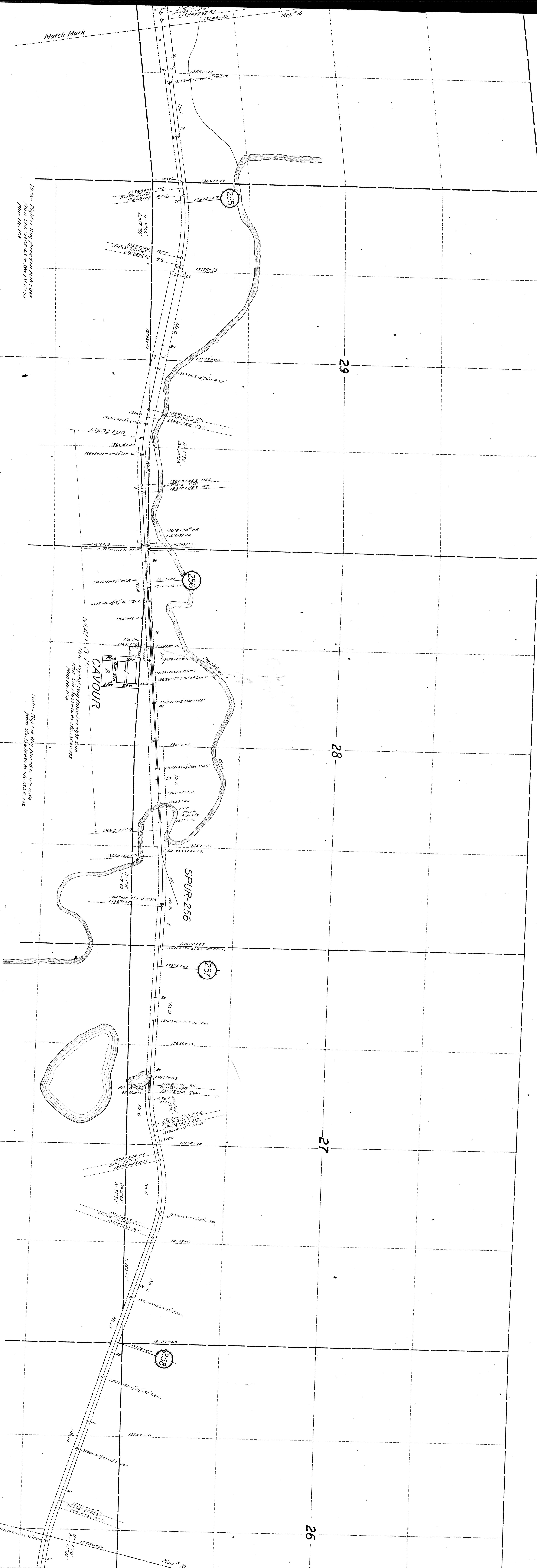
Note - Right of Way fenced on both sides from Sta. 13433+46 to Sta. 13468+56 from No. 164.

Note - Right of Way fenced on both sides from Sta. 13468+56 to Sta. 13503+00 from No. 164.

Note - Right of Way fenced on right side from Sta. 13503+00 to Sta. 13523+11 from No. 164.

Note - Right of Way fenced on both sides from Sta. 13523+11 to Sta. 13581+62 from No. 164.

TOWN 37N. RANGE 14E.  
TOWN 37N. RANGE 15E.



Note - Right of Way fenced on both sides from Sta. 13545+45 to Sta. 13671+55 from No. 164.

Note - Right of Way fenced on right side from Sta. 13637+00 to Sta. 13652+42 from No. 164.

Note - Right of Way fenced on left side from Sta. 13658+00 to Sta. 13652+42

32

29

33

28

34

27

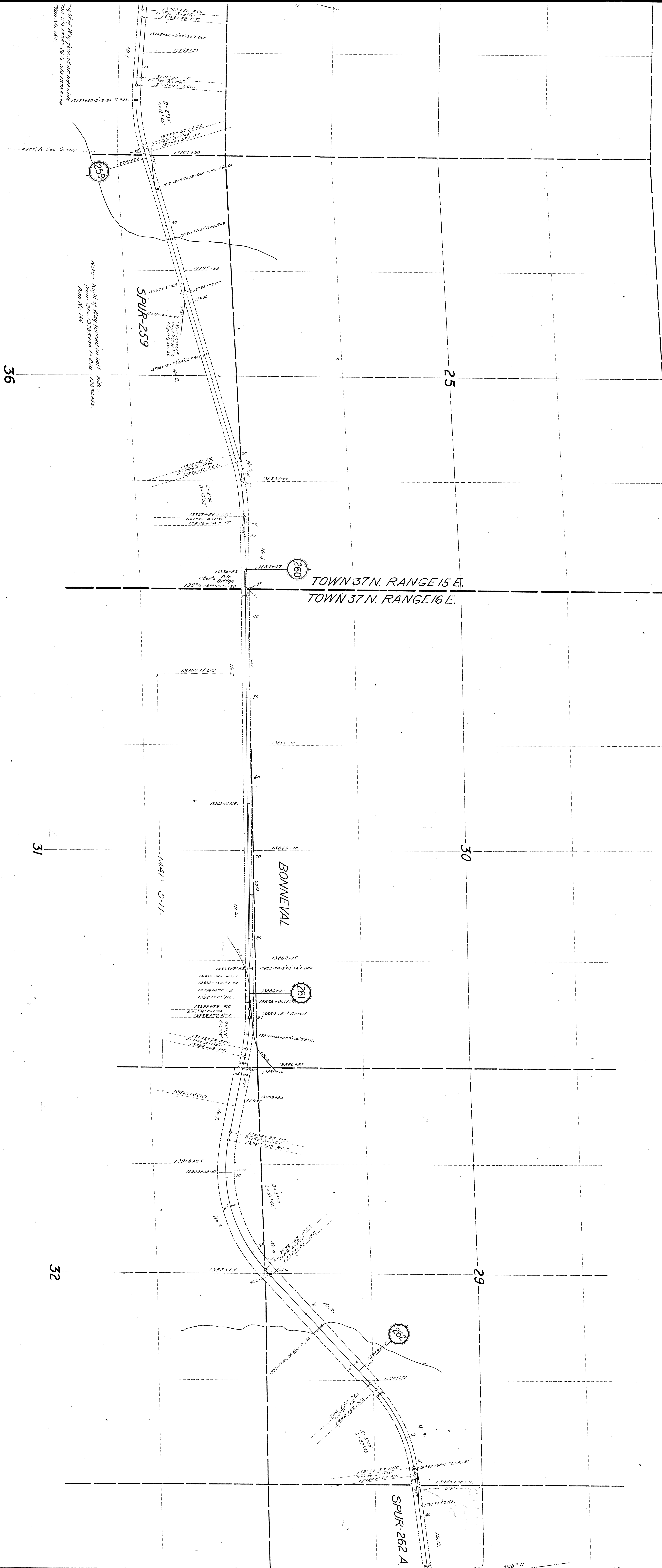
35

26

Map # 10

Map # 10

Note



Right of Way fenced on left side from Sta. 13751+00 to Sta. 13785+00 from Sta. 13785+00 to Sta. 13785+00 from Sta. 13785+00 to Sta. 13785+00

Note - Right of Way fenced on both sides from Sta. 13785+00 to Sta. 13834+00 from Sta. 13834+00 to Sta. 13834+00

TOWN 37 N. RANGE 15 E.  
TOWN 37 N. RANGE 16 E.

BONNEVAL

MAP S-11

SPUR-262 A

259

260

261

262

36

25

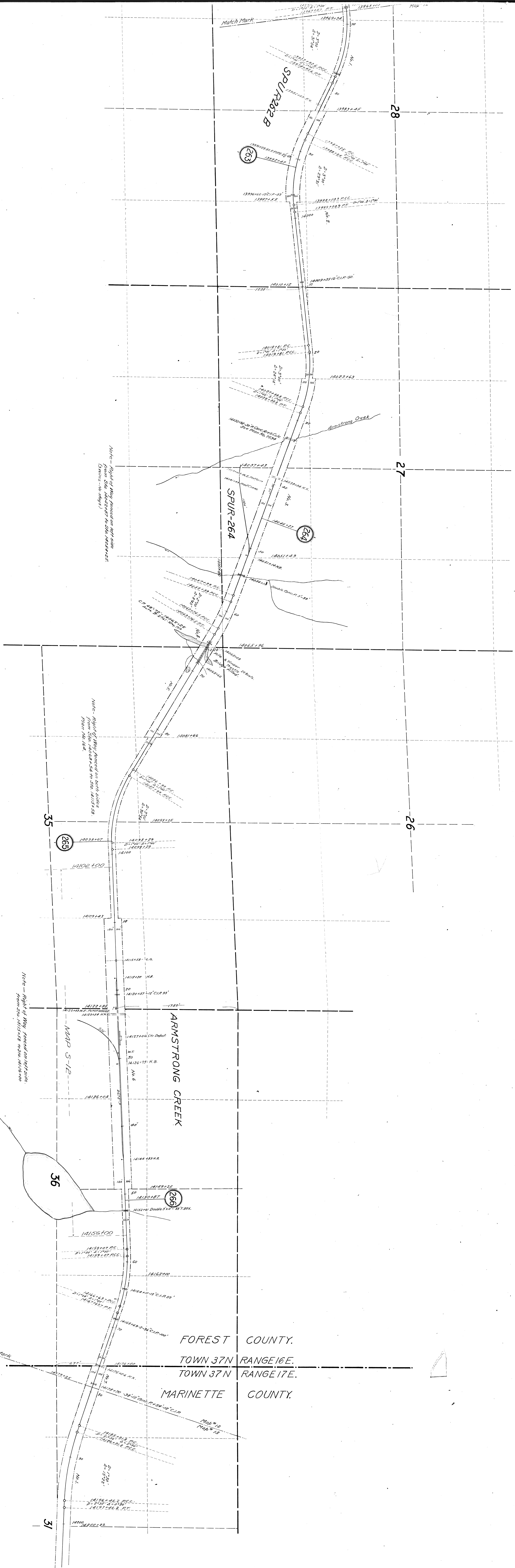
31

30

32

29





Note - Right of Way fenced on left side from Sta. 14037+43 to Sta. 14054+25 (Swires - No Shygs)

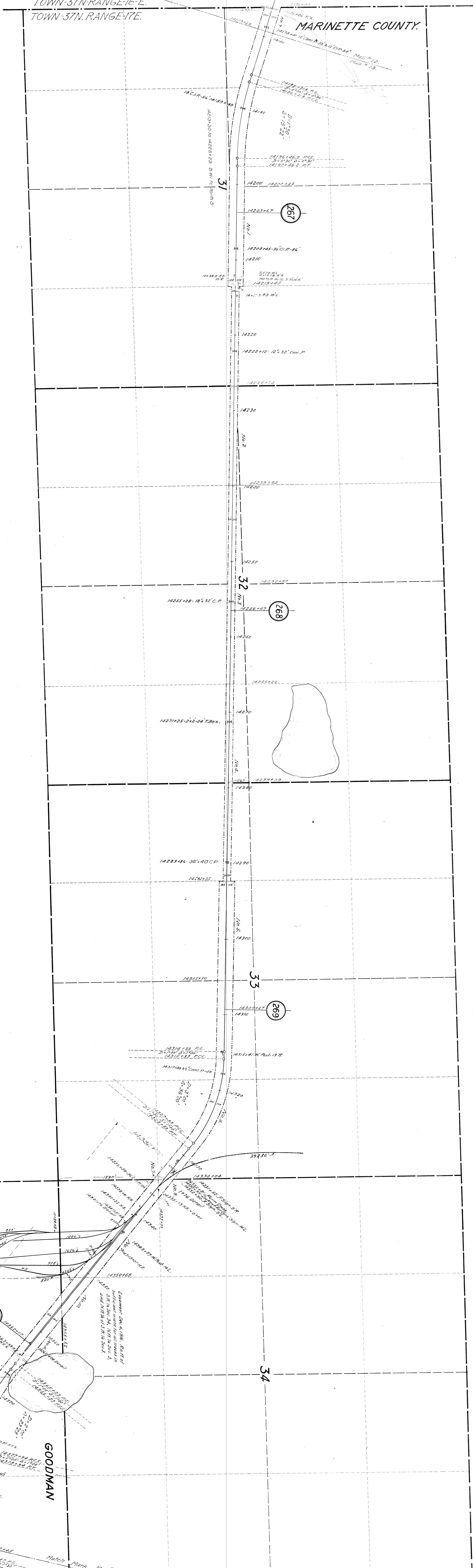
Note - Right of Way fenced on both sides from Sta. 14067+50 to Sta. 14157+58 from No. 164.

Note - Right of Way fenced on left side from Sta. 14157+58 to Sta. 14200+00

FOREST COUNTY.  
TOWN 37N RANGE 16E.  
TOWN 37N RANGE 17E.  
MARINETTE COUNTY.

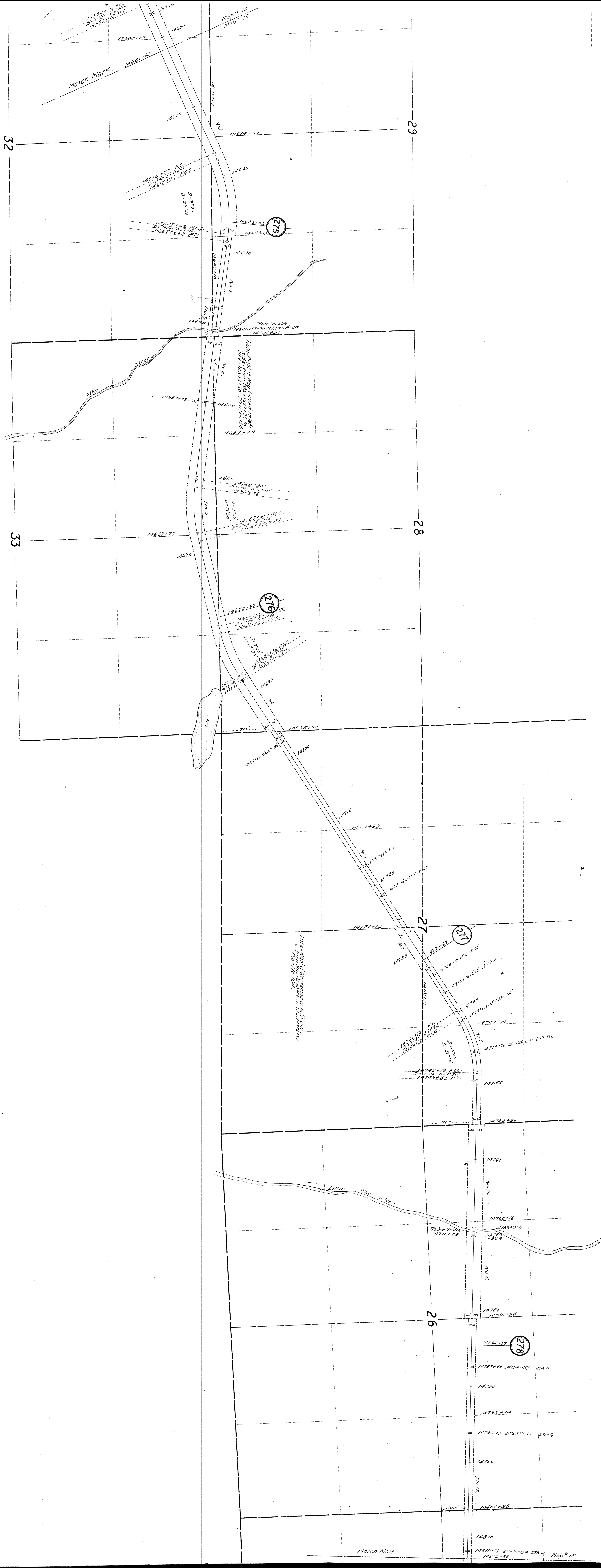
TOWN-37N-RANGE-16-E.  
TOWN-37N-RANGE-17E.

MARINETTE COUNTY.









Match Mark

29

32

28

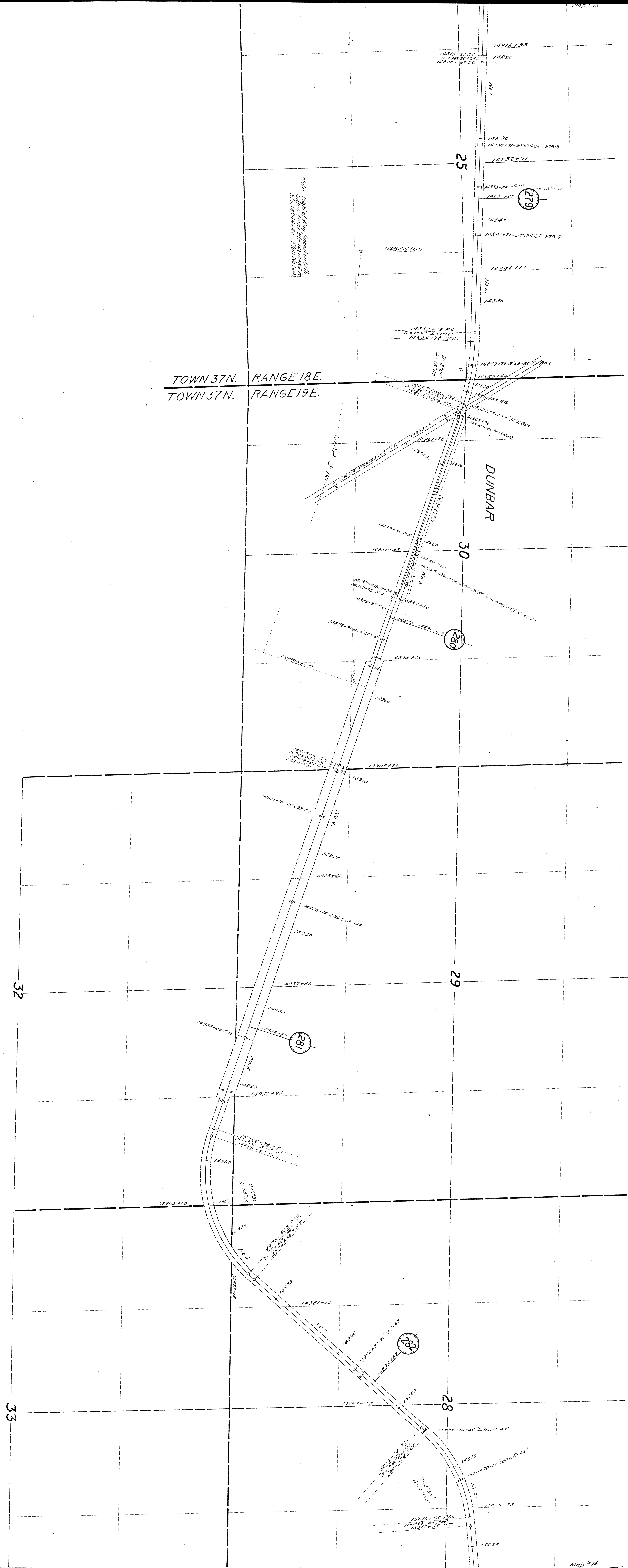
33

27

26

Match Mark

14811+71, 24'x32' C.P. 278-R, 14812+85, Mob # 15

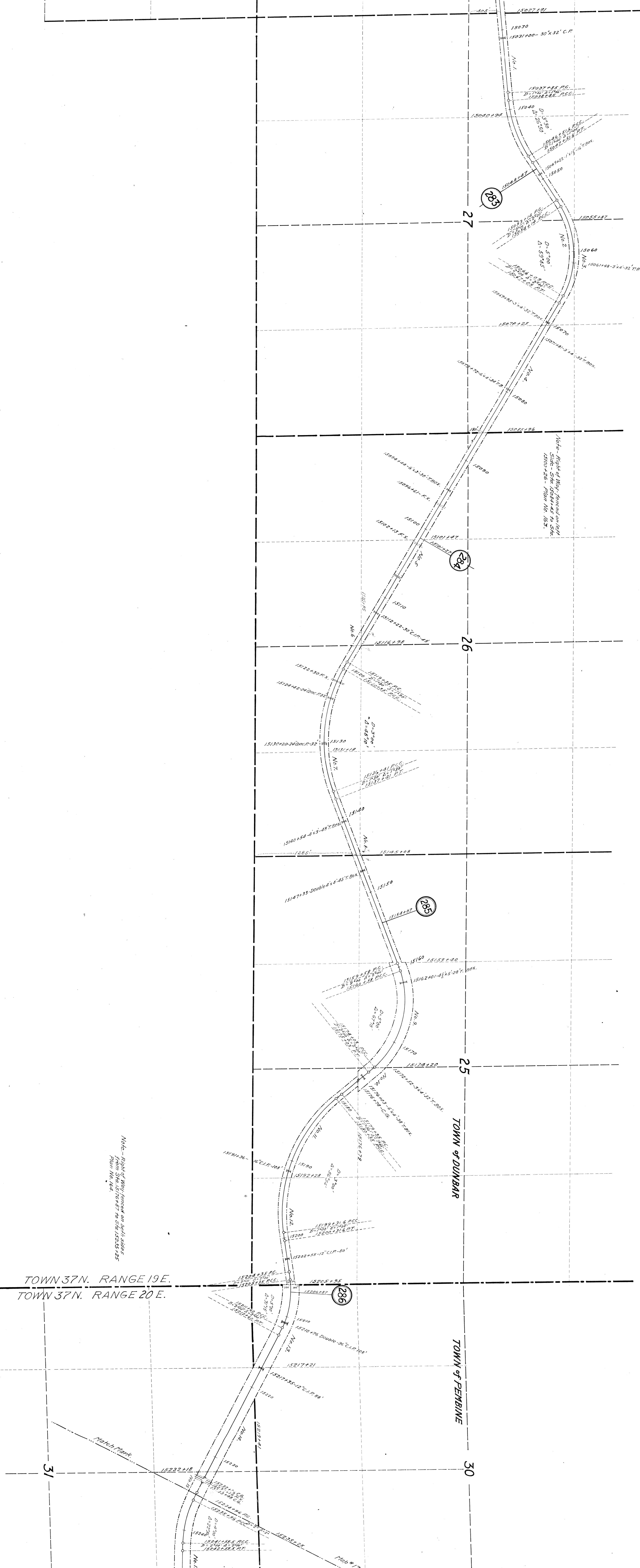


TOWN 37N. RANGE 18E.  
TOWN 37N. RANGE 19E.

DUNBAR

MAP 5-16

Match Mark



27

284

26

283

25

TOWN OF DUNBAR

TOWN OF PEMBINE

30

TOWN 37N. RANGE 19E.  
 TOWN 37N. RANGE 20E.

31

Note - Right of Way fenced on both sides  
 from No. 164

Note - Right of Way fenced on both  
 sides - 5th 1504+45 to 5th  
 1500+26 - from No. 163.

Match Mark

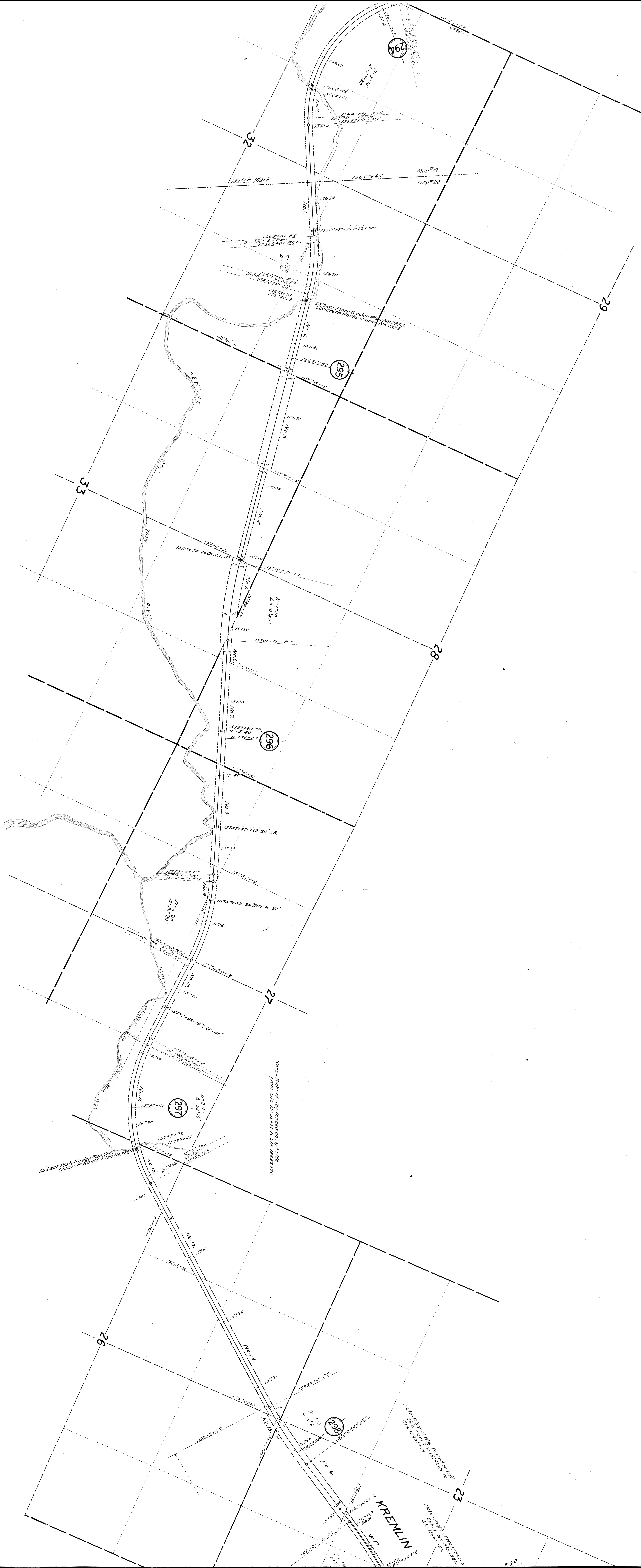
Match Mark





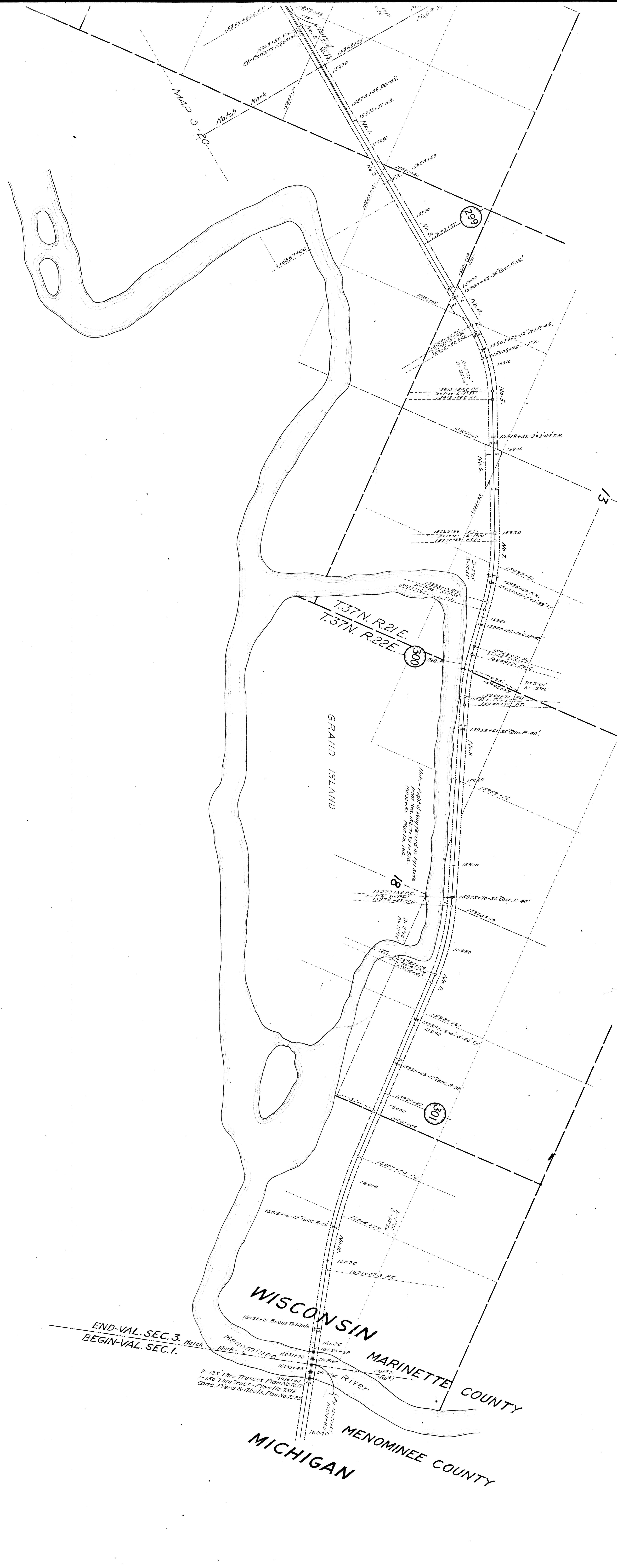






KREMLIN





**RIGHT-OF-WAY AND TRACK MAP**  
**MINNEAPOLIS, ST. PAUL & SAULT STE. MARIE**  
 Operated by the  
**MINNEAPOLIS TO SAULT STE. MARIE**  
**MINNEAPOLIS TO SAULT STE. MARIE**  
**MARINETTE COUNTY - WISCONSIN**  
 Station 14176+00 to Station 16032+55  
 Mile Post 266+2513 to Mile Post 301+3368  
 Scale - 1 in. = 400' March 2, 1916.  
 Office of Valuation Engineer.  
 Menominee, Minn.  
 Drawn by J.A. Young. Traced by G.A. Dunby.  
 Checked by J.C. Sturman.