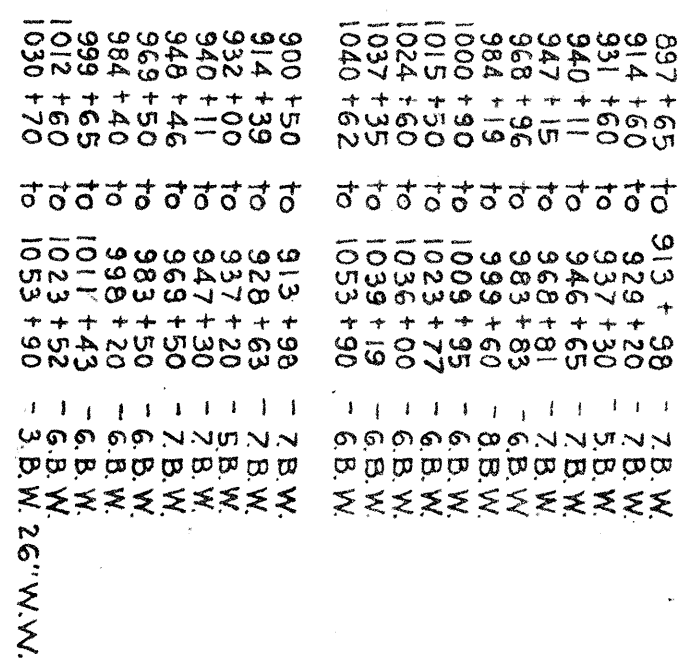
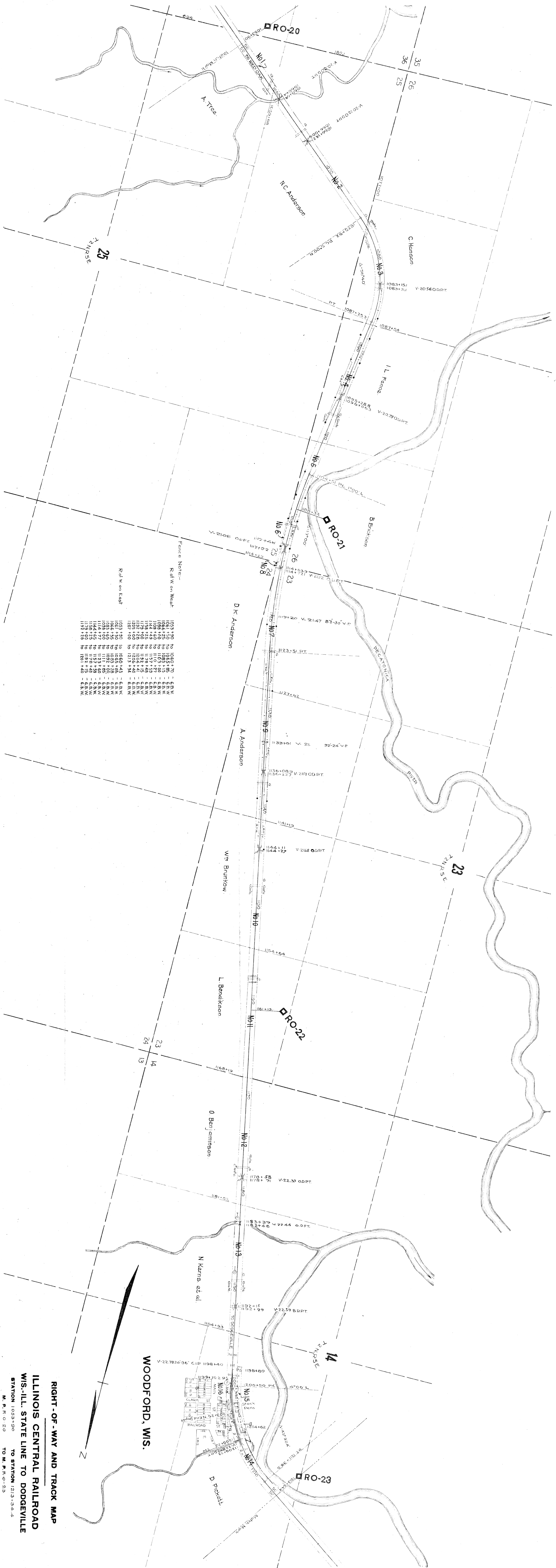


CHICAGO, ILL.





Fence Note:

Rd W on West

Rd W on East

| | | | | |
|---------|----|---------|---|-------|
| 1053+90 | to | 1060+70 | - | 6.8 W |
| 1060+70 | to | 1068+15 | - | 6.8 W |
| 1068+15 | to | 1075+15 | - | 6.8 W |
| 1075+15 | to | 1083+15 | - | 6.8 W |
| 1083+15 | to | 1090+15 | - | 6.8 W |
| 1090+15 | to | 1097+15 | - | 6.8 W |
| 1097+15 | to | 1104+15 | - | 6.8 W |
| 1104+15 | to | 1111+15 | - | 6.8 W |
| 1111+15 | to | 1118+15 | - | 6.8 W |
| 1118+15 | to | 1125+15 | - | 6.8 W |
| 1125+15 | to | 1132+15 | - | 6.8 W |
| 1132+15 | to | 1139+15 | - | 6.8 W |
| 1139+15 | to | 1146+15 | - | 6.8 W |
| 1146+15 | to | 1153+15 | - | 6.8 W |
| 1153+15 | to | 1160+15 | - | 6.8 W |
| 1160+15 | to | 1167+15 | - | 6.8 W |
| 1167+15 | to | 1174+15 | - | 6.8 W |
| 1174+15 | to | 1181+15 | - | 6.8 W |
| 1181+15 | to | 1188+15 | - | 6.8 W |
| 1188+15 | to | 1195+15 | - | 6.8 W |
| 1195+15 | to | 1202+15 | - | 6.8 W |
| 1202+15 | to | 1209+15 | - | 6.8 W |
| 1209+15 | to | 1216+15 | - | 6.8 W |
| 1216+15 | to | 1223+15 | - | 6.8 W |
| 1223+15 | to | 1230+15 | - | 6.8 W |
| 1230+15 | to | 1237+15 | - | 6.8 W |
| 1237+15 | to | 1244+15 | - | 6.8 W |
| 1244+15 | to | 1251+15 | - | 6.8 W |
| 1251+15 | to | 1258+15 | - | 6.8 W |
| 1258+15 | to | 1265+15 | - | 6.8 W |
| 1265+15 | to | 1272+15 | - | 6.8 W |
| 1272+15 | to | 1279+15 | - | 6.8 W |
| 1279+15 | to | 1286+15 | - | 6.8 W |
| 1286+15 | to | 1293+15 | - | 6.8 W |
| 1293+15 | to | 1300+15 | - | 6.8 W |
| 1300+15 | to | 1307+15 | - | 6.8 W |
| 1307+15 | to | 1314+15 | - | 6.8 W |
| 1314+15 | to | 1321+15 | - | 6.8 W |
| 1321+15 | to | 1328+15 | - | 6.8 W |
| 1328+15 | to | 1335+15 | - | 6.8 W |
| 1335+15 | to | 1342+15 | - | 6.8 W |
| 1342+15 | to | 1349+15 | - | 6.8 W |
| 1349+15 | to | 1356+15 | - | 6.8 W |
| 1356+15 | to | 1363+15 | - | 6.8 W |
| 1363+15 | to | 1370+15 | - | 6.8 W |
| 1370+15 | to | 1377+15 | - | 6.8 W |
| 1377+15 | to | 1384+15 | - | 6.8 W |
| 1384+15 | to | 1391+15 | - | 6.8 W |
| 1391+15 | to | 1398+15 | - | 6.8 W |
| 1398+15 | to | 1405+15 | - | 6.8 W |
| 1405+15 | to | 1412+15 | - | 6.8 W |
| 1412+15 | to | 1419+15 | - | 6.8 W |
| 1419+15 | to | 1426+15 | - | 6.8 W |
| 1426+15 | to | 1433+15 | - | 6.8 W |
| 1433+15 | to | 1440+15 | - | 6.8 W |
| 1440+15 | to | 1447+15 | - | 6.8 W |
| 1447+15 | to | 1454+15 | - | 6.8 W |
| 1454+15 | to | 1461+15 | - | 6.8 W |
| 1461+15 | to | 1468+15 | - | 6.8 W |
| 1468+15 | to | 1475+15 | - | 6.8 W |
| 1475+15 | to | 1482+15 | - | 6.8 W |
| 1482+15 | to | 1489+15 | - | 6.8 W |
| 1489+15 | to | 1496+15 | - | 6.8 W |
| 1496+15 | to | 1503+15 | - | 6.8 W |
| 1503+15 | to | 1510+15 | - | 6.8 W |
| 1510+15 | to | 1517+15 | - | 6.8 W |
| 1517+15 | to | 1524+15 | - | 6.8 W |
| 1524+15 | to | 1531+15 | - | 6.8 W |
| 1531+15 | to | 1538+15 | - | 6.8 W |
| 1538+15 | to | 1545+15 | - | 6.8 W |
| 1545+15 | to | 1552+15 | - | 6.8 W |
| 1552+15 | to | 1559+15 | - | 6.8 W |
| 1559+15 | to | 1566+15 | - | 6.8 W |
| 1566+15 | to | 1573+15 | - | 6.8 W |
| 1573+15 | to | 1580+15 | - | 6.8 W |
| 1580+15 | to | 1587+15 | - | 6.8 W |
| 1587+15 | to | 1594+15 | - | 6.8 W |
| 1594+15 | to | 1601+15 | - | 6.8 W |
| 1601+15 | to | 1608+15 | - | 6.8 W |
| 1608+15 | to | 1615+15 | - | 6.8 W |
| 1615+15 | to | 1622+15 | - | 6.8 W |
| 1622+15 | to | 1629+15 | - | 6.8 W |
| 1629+15 | to | 1636+15 | - | 6.8 W |
| 1636+15 | to | 1643+15 | - | 6.8 W |
| 1643+15 | to | 1650+15 | - | 6.8 W |
| 1650+15 | to | 1657+15 | - | 6.8 W |
| 1657+15 | to | 1664+15 | - | 6.8 W |
| 1664+15 | to | 1671+15 | - | 6.8 W |
| 1671+15 | to | 1678+15 | - | 6.8 W |
| 1678+15 | to | 1685+15 | - | 6.8 W |
| 1685+15 | to | 1692+15 | - | 6.8 W |
| 1692+15 | to | 1699+15 | - | 6.8 W |
| 1699+15 | to | 1706+15 | - | 6.8 W |
| 1706+15 | to | 1713+15 | - | 6.8 W |
| 1713+15 | to | 1720+15 | - | 6.8 W |
| 1720+15 | to | 1727+15 | - | 6.8 W |
| 1727+15 | to | 1734+15 | - | 6.8 W |
| 1734+15 | to | 1741+15 | - | 6.8 W |
| 1741+15 | to | 1748+15 | - | 6.8 W |
| 1748+15 | to | 1755+15 | - | 6.8 W |
| 1755+15 | to | 1762+15 | - | 6.8 W |
| 1762+15 | to | 1769+15 | - | 6.8 W |
| 1769+15 | to | 1776+15 | - | 6.8 W |
| 1776+15 | to | 1783+15 | - | 6.8 W |
| 1783+15 | to | 1790+15 | - | 6.8 W |
| 1790+15 | to | 1797+15 | - | 6.8 W |
| 1797+15 | to | 1804+15 | - | 6.8 W |
| 1804+15 | to | 1811+15 | - | 6.8 W |
| 1811+15 | to | 1818+15 | - | 6.8 W |
| 1818+15 | to | 1825+15 | - | 6.8 W |
| 1825+15 | to | 1832+15 | - | 6.8 W |
| 1832+15 | to | 1839+15 | - | 6.8 W |
| 1839+15 | to | 1846+15 | - | 6.8 W |
| 1846+15 | to | 1853+15 | - | 6.8 W |
| 1853+15 | to | 1860+15 | - | 6.8 W |
| 1860+15 | to | 1867+15 | - | 6.8 W |
| 1867+15 | to | 1874+15 | - | 6.8 W |
| 1874+15 | to | 1881+15 | - | 6.8 W |
| 1881+15 | to | 1888+15 | - | 6.8 W |
| 1888+15 | to | 1895+15 | - | 6.8 W |
| 1895+15 | to | 1902+15 | - | 6.8 W |
| 1902+15 | to | 1909+15 | - | 6.8 W |
| 1909+15 | to | 1916+15 | - | 6.8 W |
| 1916+15 | to | 1923+15 | - | 6.8 W |
| 1923+15 | to | 1930+15 | - | 6.8 W |
| 1930+15 | to | 1937+15 | - | 6.8 W |
| 1937+15 | to | 1944+15 | - | 6.8 W |
| 1944+15 | to | 1951+15 | - | 6.8 W |
| 1951+15 | to | 1958+15 | - | 6.8 W |
| 1958+15 | to | 1965+15 | - | 6.8 W |
| 1965+15 | to | 1972+15 | - | 6.8 W |
| 1972+15 | to | 1979+15 | - | 6.8 W |
| 1979+15 | to | 1986+15 | - | 6.8 W |
| 1986+15 | to | 1993+15 | - | 6.8 W |
| 1993+15 | to | 2000+15 | - | 6.8 W |

RIGHT-OF-WAY AND TRACK MAP

ILLINOIS CENTRAL RAILROAD

WIS.-ILL. STATE LINE TO DODGEVILLE

STATION 1053+90 TO STATION 1213+34.4

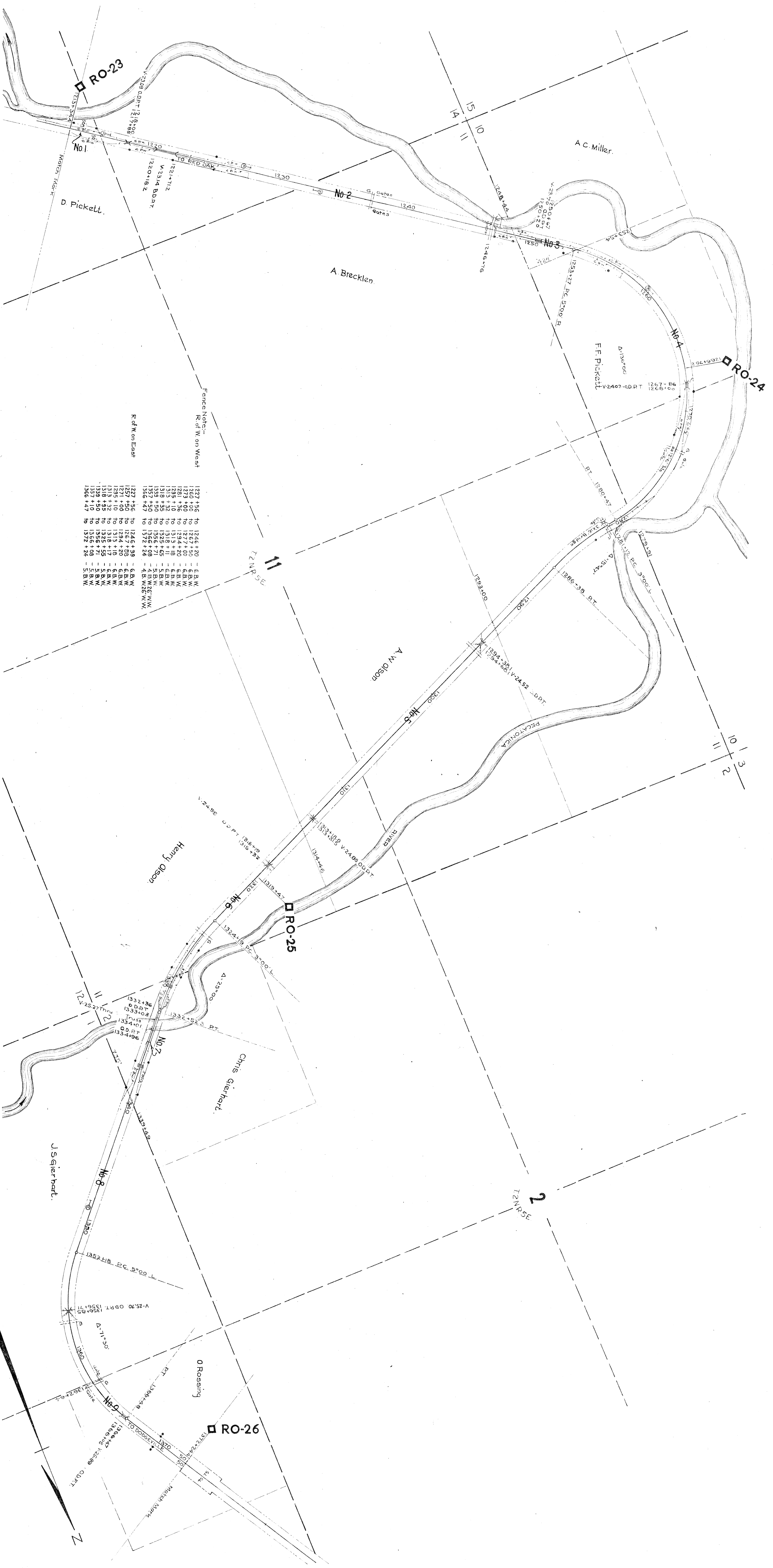
M. P. R. O. 20 TO M. P. R. O. 23

SCALE: 1 IN. = 300 FT.

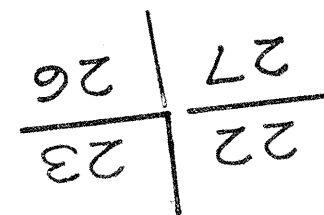
JUNE 20, 1916.

OFFICE OF CHIEF ENGINEER.

CHICAGO, ILL.

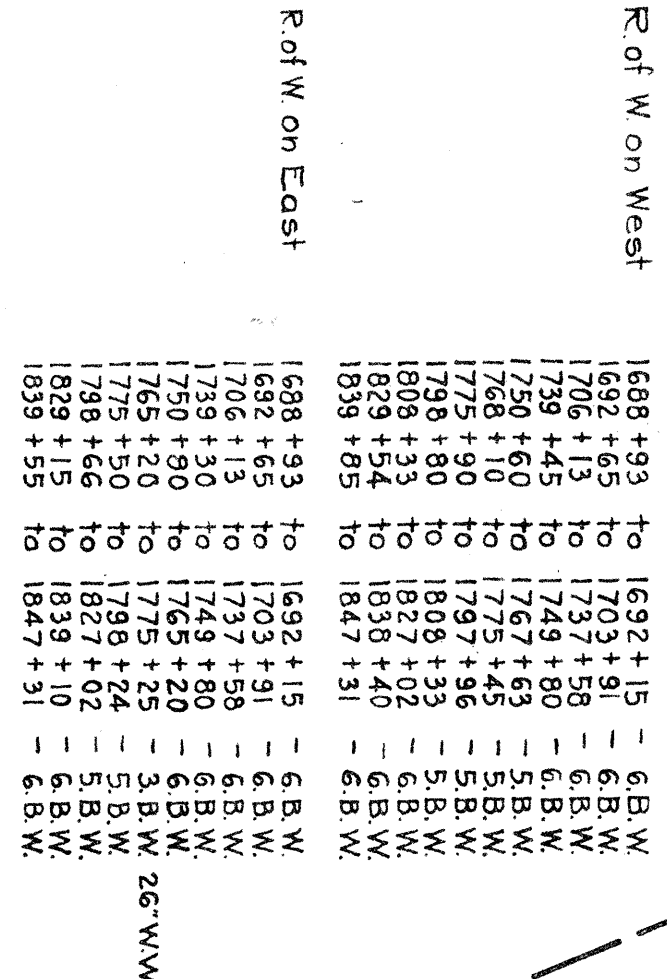


RIGHT-OF-WAY AND TRACK MAP
ILLINOIS CENTRAL RAILROAD
WIS.-ILL. STATE LINE TO DODGEVILLE
STATION 1213+34.4 TO STATION 1372+24.4
M. P. R.O.-23 TO M. P. R.O.-26
SCALE: 1 IN. = 300 FT.
JUNE 30, 1918.
OFFICE OF CHIEF ENGINEER.
CHICAGO, ILL.



ILLINOIS CENTRAL RAILROAD
WIS.-ILL. STATE LINE TO DODGEVILLE

OFFICE OF CHIEF ENGINEER
CHICAGO, ILL



CHICAGO, IL

LA FAYETTE CO.
IOWA CO.

1994+01
1994+28.8 V37-8 B.D.P.T.

DR-38

17-12" V.P.

2023+65.5 P.C. 2° L

2028+15.5 P.T.

15

14 N RSE

2030+92 P.C. 5° 30' R

2039+61.5 P.T.

2045+37.7 V38-7% O.D.P.T.

2058+133.7 P.C. 4° L

DR-39

2074+30.4 P.T.

2079+15

2079+32.0 V39-3% B.D.P.T.

2081+31 P.C. 4° L

2086+19.3 P.T.

2096+49.3 P.T.

2099+44.8

2099+44.8

2099+44.8

2099+44.8

2099+44.8

2099+44.8

2099+44.8

2099+44.8

2099+44.8

2099+44.8

2099+44.8

2099+44.8

2099+44.8

2099+44.8

2099+44.8

2099+44.8

2099+44.8

2099+44.8

2099+44.8

2099+44.8

2099+44.8

2099+44.8

2099+44.8

2099+44.8

2099+44.8

2099+44.8

2099+44.8

2099+44.8

2099+44.8

2099+44.8

2099+44.8

2099+44.8

2099+44.8

2099+44.8

2099+44.8

2099+44.8

2099+44.8

2099+44.8

2099+44.8

2099+44.8

2099+44.8

2099+44.8

2099+44.8

2099+44.8

2099+44.8

2099+44.8

2099+44.8

2099+44.8

2099+44.8

2099+44.8

2099+44.8

2099+44.8

2099+44.8

2099+44.8

2099+44.8

2099+44.8

2099+44.8

2099+44.8

2099+44.8

2099+44.8

2099+44.8

2099+44.8

2099+44.8

2099+44.8

2099+44.8

2099+44.8

2099+44.8

2099+44.8

2099+44.8

2099+44.8

2099+44.8

2099+44.8

2099+44.8

2099+44.8

2099+44.8

2099+44.8

2099+44.8

2099+44.8

2099+44.8

2099+44.8

2099+44.8

2099+44.8

2099+44.8

2099+44.8

2099+44.8

2099+44.8

2099+44.8

2099+44.8

2099+44.8

2099+44.8

2099+44.8

2099+44.8

2099+44.8

2099+44.8

2099+44.8

2099+44.8

2099+44.8

2099+44.8

2099+44.8

2099+44.8

2099+44.8

2099+44.8

2099+44.8

2099+44.8

2099+44.8

2099+44.8

2099+44.8

2099+44.8

2099+44.8

2099+44.8

2099+44.8

2099+44.8

2099+44.8

2099+44.8

2099+44.8

2099+44.8

2099+44.8

2099+44.8

2099+44.8

2099+44.8

2099+44.8

2099+44.8

2099+44.8

2099+44.8

2099+44.8

2099+44.8

2099+44.8

2099+44.8

2099+44.8

2099+44.8

2099+44.8

2099+44.8

2099+44.8

2099+44.8

2099+44.8

2099+44.8

2099+44.8

2099+44.8

2099+44.8

2099+44.8

2099+44.8

2099+44.8

2099+44.8

2099+44.8

2099+44.8

2099+44.8

2099+44.8

2099+44.8

2099+44.8

2099+44.8

2099+44.8

2099+44.8

2099+44.8

2099+44.8

2099+44.8

2099+44.8

2099+44.8

2099+44.8

2099+44.8

2099+44.8

2099+44.8

2099+44.8

2099+44.8

2099+44.8

2099+44.8

2099+44.8

2099+44.8

2099+44.8

2099+44.8

2099+44.8

2099+44.8

2099+44.8

2099+44.8

2099+44.8

2099+44.8

2099+44.8

2099+44.8

2099+44.8

2099+44.8

2099+44.8

2099+44.8

2099+44.8

2099+44.8

2099+44.8

2099+44.8

2099+44.8

2099+44.8

2099+44.8

2099+44.8

2099+44.8

2099+44.8

2099+44.8

2099+44.8

2099+44.8

2099+44.8

2099+44.8

2099+44.8

2099+44.8

2099+44.8

2099+44.8

2099+44.8

2099+44.8

2099+44.8

2099+44.8

2099+44.8

2099+44.8

2099+44.8

2099+44.8

2099+44.8

2099+44.8

2099+44.8

2099+44.8

2099+44.8

2099+44.8

2099+44.8

2099+44.8

2099+44.8

2099+44.8

2099+44.8

2099+44.8

2099+44.8

2099+44.8

2099+44.8

2099+44.8

2099+44.8

2099+44.8

2099+44.8

2099+44.8

2099+44.8

2099+44.8

2099+44.8

2099+44.8

2099+44.8

2099+44.8

2099+44.8

2099+44.8

2099+44.8

2099+44.8

2099+44.8

2099+44.8

2099+44.8

2099+44.8

2099+44.8

2099+44.8

2099+44.8

2099+44.8

2099+44.8

2099+44.8

2099+44.8

2099+44.8

2099+44.8

2099+44.8

2099+44.8

2099+44.8

2099+44.8

2099+44.8

2099+44.8

2099+44.8

2099+44.8

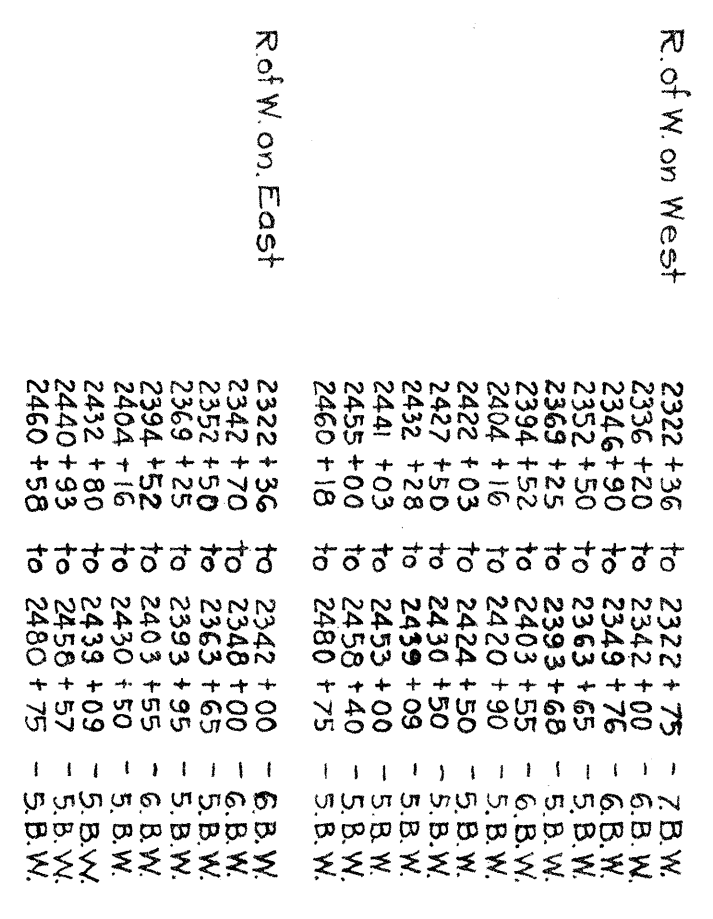
2099+44.8

2099+44.8

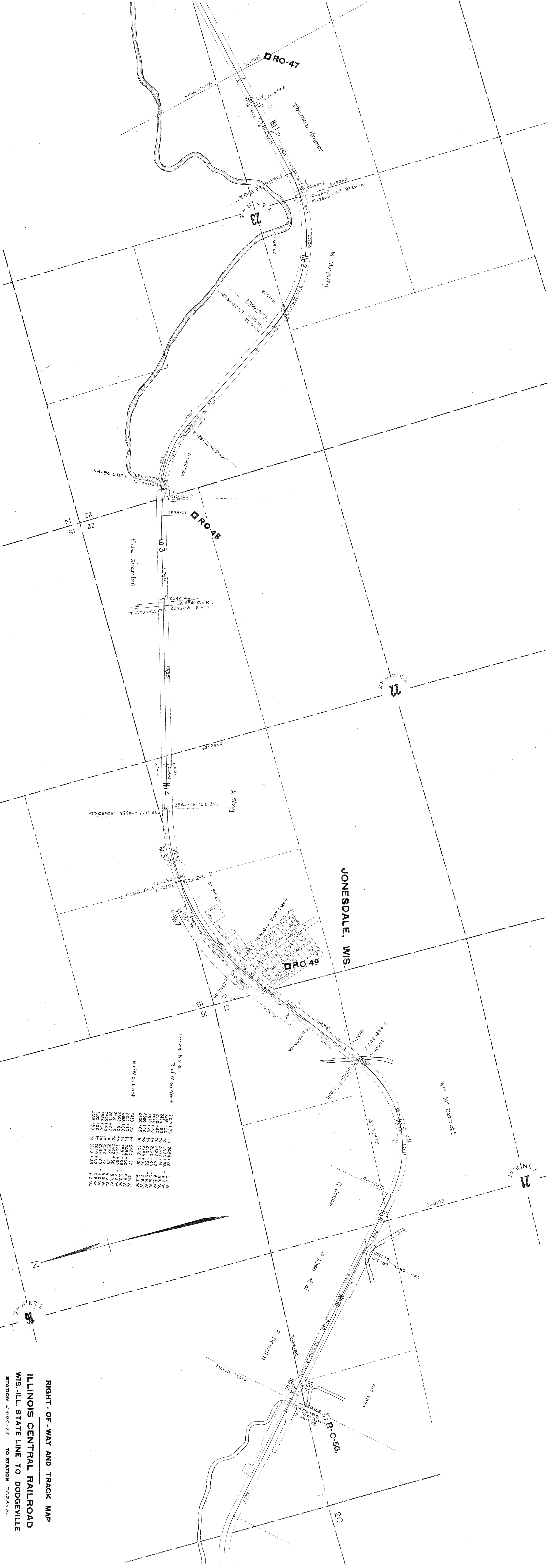
2099+44.8

2099+44.8

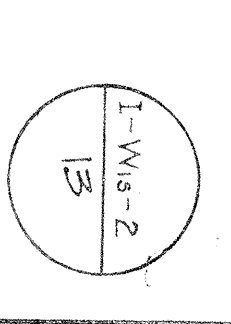
2099+44.8

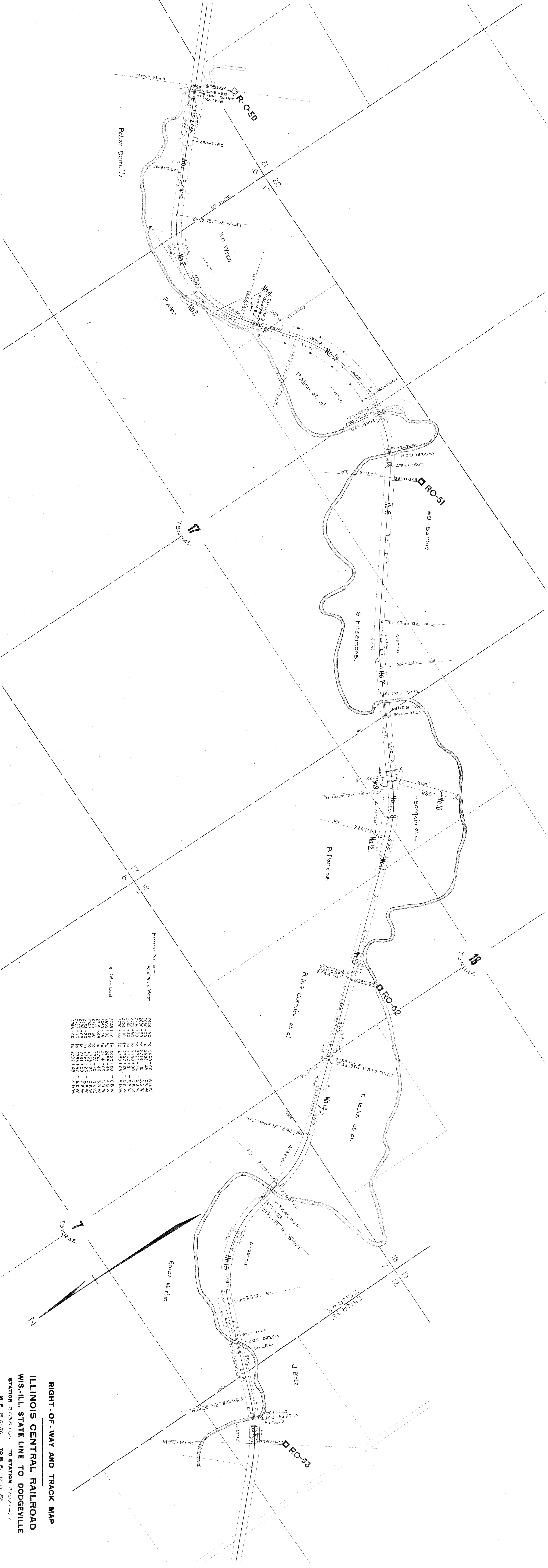


I-WIS-2



RIGHT-OF-WAY AND TRACK MAP
ILLINOIS CENTRAL RAILROAD
WIS.-ILL. STATE LINE TO DODGEVILLE
 STATION 2460+75 TO STATION 2556+00
 M. P. R.O.-47 TO M. P. R.O.-50
 SCALE: 1 IN. = 500 FT.
 JUNE 30, 1918.
 OFFICE OF CHIEF ENGINEER,
 CHICAGO, ILL.





RIGHT-OF-WAY AND TRACK MAP
ILLINOIS CENTRAL RAILROAD
WIS.-ILL. STATE LINE TO DODGEVILLE
STATION 2636+88 TO STATION 2797+47.7
M. P. R.O.-50 TO M. P. R.O.-53
SCALE: 1 IN. = 200 FT.
JUNE 30, 1918.
OFFICE OF CHIEF ENGINEER,
CHICAGO, ILL.

Fence Note:—
R of W on West
R of W on East

| | | | | |
|---------|----|---------|---|-------|
| 2644+60 | to | 2650+00 | — | 6.8 W |
| 2644+60 | to | 2649+00 | — | 6.8 W |
| 2644+60 | to | 2648+00 | — | 6.8 W |
| 2644+60 | to | 2647+00 | — | 6.8 W |
| 2644+60 | to | 2646+00 | — | 6.8 W |
| 2644+60 | to | 2645+00 | — | 6.8 W |
| 2644+60 | to | 2644+00 | — | 6.8 W |
| 2644+60 | to | 2643+00 | — | 6.8 W |
| 2644+60 | to | 2642+00 | — | 6.8 W |
| 2644+60 | to | 2641+00 | — | 6.8 W |
| 2644+60 | to | 2640+00 | — | 6.8 W |
| 2644+60 | to | 2639+00 | — | 6.8 W |
| 2644+60 | to | 2638+00 | — | 6.8 W |
| 2644+60 | to | 2637+00 | — | 6.8 W |
| 2644+60 | to | 2636+88 | — | 6.8 W |

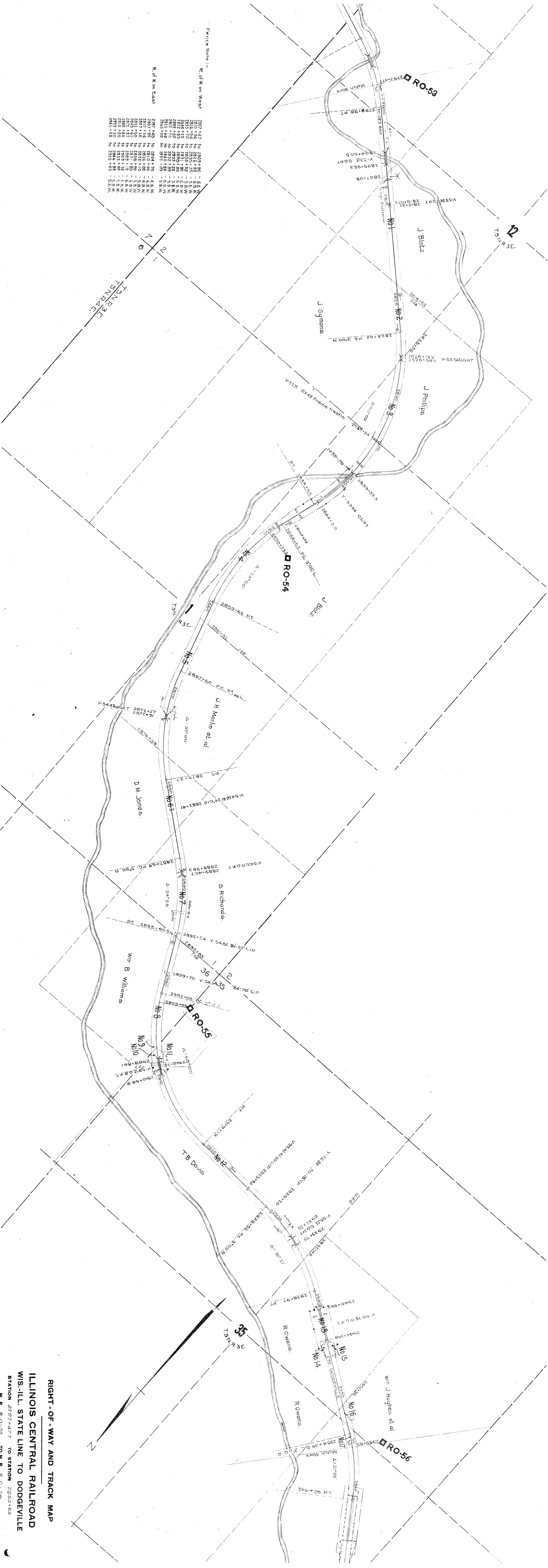
Fence Note: -

R. of W. on West

| | | | | |
|---------|----|---------|---|-------|
| 2807+47 | to | 2809+50 | - | 6.8 W |
| 2810+34 | to | 2812+50 | - | 5.8 W |
| 2812+54 | to | 2815+22 | - | 5.8 W |
| 2815+22 | to | 2817+56 | - | 5.8 W |
| 2817+56 | to | 2820+00 | - | 5.8 W |
| 2820+00 | to | 2822+58 | - | 5.8 W |
| 2822+58 | to | 2825+00 | - | 5.8 W |
| 2825+00 | to | 2827+58 | - | 5.8 W |
| 2827+58 | to | 2830+00 | - | 5.8 W |
| 2830+00 | to | 2832+58 | - | 5.8 W |
| 2832+58 | to | 2835+00 | - | 5.8 W |
| 2835+00 | to | 2837+58 | - | 5.8 W |
| 2837+58 | to | 2840+00 | - | 5.8 W |
| 2840+00 | to | 2842+58 | - | 5.8 W |
| 2842+58 | to | 2845+00 | - | 5.8 W |

R. of W. on East

| | | | | |
|---------|----|---------|---|-------|
| 2807+48 | to | 2809+50 | - | 4.8 W |
| 2809+50 | to | 2812+50 | - | 4.8 W |
| 2812+50 | to | 2815+22 | - | 4.8 W |
| 2815+22 | to | 2817+56 | - | 4.8 W |
| 2817+56 | to | 2820+00 | - | 4.8 W |
| 2820+00 | to | 2822+58 | - | 4.8 W |
| 2822+58 | to | 2825+00 | - | 4.8 W |
| 2825+00 | to | 2827+58 | - | 4.8 W |
| 2827+58 | to | 2830+00 | - | 4.8 W |
| 2830+00 | to | 2832+58 | - | 4.8 W |
| 2832+58 | to | 2835+00 | - | 4.8 W |
| 2835+00 | to | 2837+58 | - | 4.8 W |
| 2837+58 | to | 2840+00 | - | 4.8 W |
| 2840+00 | to | 2842+58 | - | 4.8 W |
| 2842+58 | to | 2845+00 | - | 4.8 W |



RIGHT-OF-WAY AND TRACK MAP

ILLINOIS CENTRAL RAILROAD

WIS.-ILL. STATE LINE TO DODGEVILLE

STATION 2797+47 TO STATION 2955+65

M. P. R.O.-53 TO M. P. R.O.-56

SCALE: 1 IN. = 200 FT.

OFFICE OF CHIEF ENGINEER, CHICAGO, ILL.

