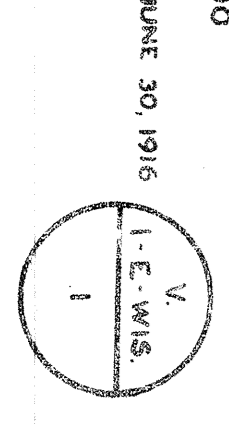


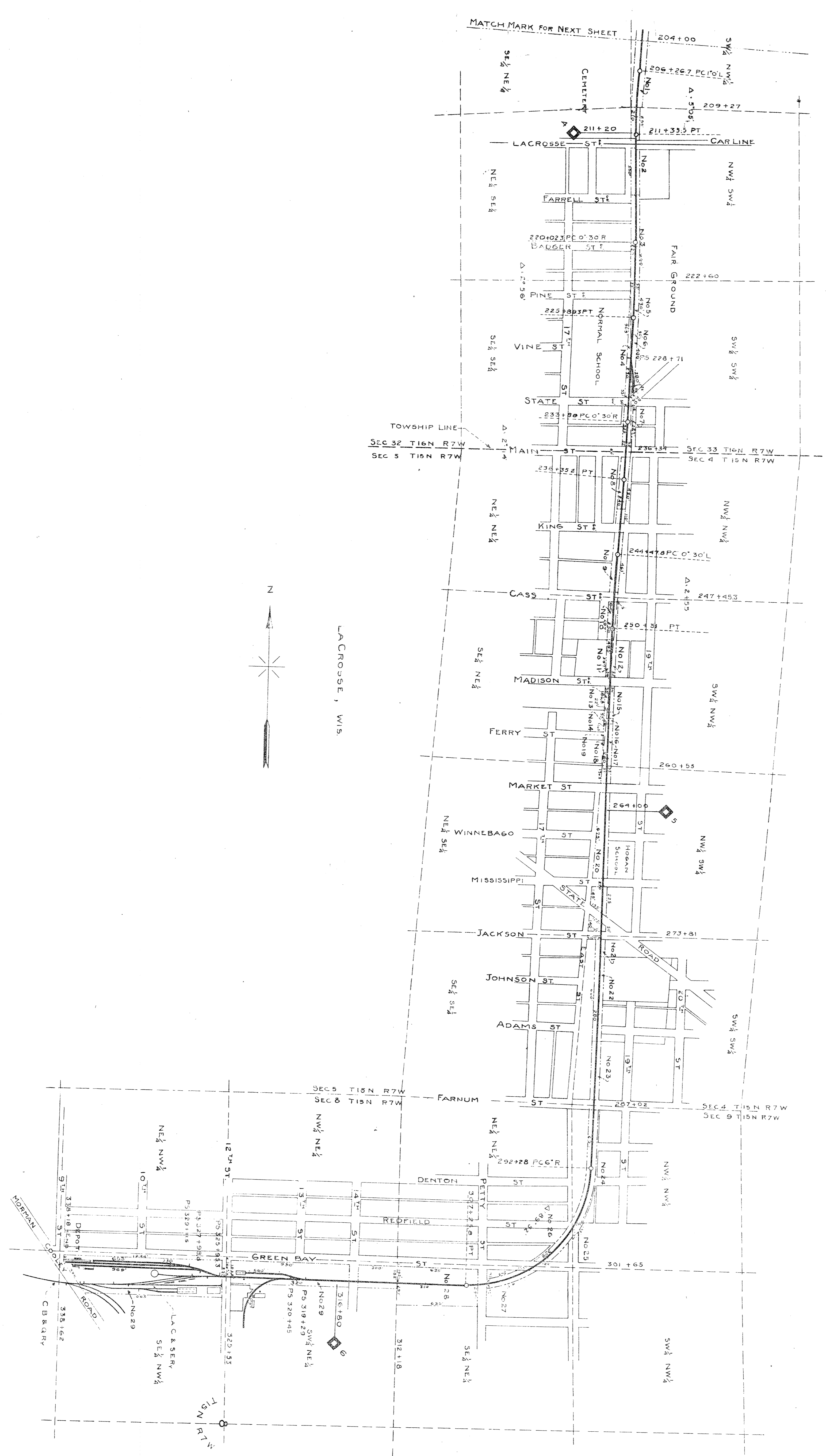
LINE	SECTION	DATE	BOOK	PAGE	ACRES	SQ. FEET
1	C.A. Sauer	NOV. 13 1876	226	122	1.1876	54,463
2	Edmund Hunter	JULY 16 1876	48	122	1.1876	54,463
3	Levan Archer	JULY 16 1876	48	121	1.1876	54,463
4	Town of Campbell	JULY 16 1876	48	121	1.1876	54,463
5	City of Green Bay	JULY 16 1876	48	121	1.1876	54,463
6	City of Green Bay	JULY 16 1876	48	121	1.1876	54,463
7	City of Green Bay	JULY 16 1876	48	121	1.1876	54,463
8	City of Green Bay	JULY 16 1876	48	121	1.1876	54,463
9	City of Green Bay	JULY 16 1876	48	121	1.1876	54,463
10	City of Green Bay	JULY 16 1876	48	121	1.1876	54,463
11	City of Green Bay	JULY 16 1876	48	121	1.1876	54,463
12	City of Green Bay	JULY 16 1876	48	121	1.1876	54,463
13	City of Green Bay	JULY 16 1876	48	121	1.1876	54,463
14	City of Green Bay	JULY 16 1876	48	121	1.1876	54,463
15	City of Green Bay	JULY 16 1876	48	121	1.1876	54,463

Note: Statement to La Crosse Water Power Co. 6-4-13 giving them right to construct and maintain power transmission line on N. of W. corner 13-1-13-13.

State of Wisconsin  
 County of Green Bay  
 I, the undersigned office of the Green Bay and Western  
 Railway Company, do hereby certify that this is a correct map in a  
 series of 2 primary sheets and 1 supplemental sheet of said railroad  
 crossing prepared from the records of the system as so stated of Wisconsin.  
 Witness my hand and seal of office this 10th day of June 1916.  
 Chief Engineer  
 Green Bay and Western R.R.  
 Green Bay, Wis.

**RIGHT OF WAY AND TRACK MAP**  
**GREEN BAY AND WESTERN R. R.**  
 OPERATED BY  
**GREEN BAY AND WESTERN R. R.**  
 LA CROSSE BRANCH  
 STATION 0-00 TO STATION 204-00  
 SCALE 1 INCH = 400 FEET  
 OFFICE OF CHIEF ENGINEER  
 GREEN BAY, WIS.  
 JUNE 30 1916





LINE	SHOW	DATE	RECORD	AREA	REMARKS
1	PROBATION RECORD	Jan. 8, 1877	48	249	19,153
2	Peter Johnson	June 24, 1878	48	124	59,633
3	H. F. Wills	Sept. 4, 1877	49	284	25,157
4	H. F. Wills	Jan. 20, 1880	56	159	39,322
5	H. F. Wills	Jan. 20, 1880	55	159	10,000
6	H. F. Wills	Jan. 20, 1880	55	159	6,500
7	Richardson	Jan. 20, 1880	55	159	21,500
8	John Johnson	Jan. 20, 1880	55	159	18,800
9	John Johnson	Jan. 20, 1880	55	159	11,448
10	Robert Johnson	Jan. 20, 1880	49	166	1,905
11	Robert Johnson	Jan. 20, 1880	49	166	1,905
12	Robert Johnson	Jan. 20, 1880	49	166	1,905
13	C. J. Lambert	Jan. 20, 1880	48	377	2,712
14	C. J. Lambert	Jan. 20, 1880	48	377	2,712
15	C. J. Lambert	Jan. 20, 1880	48	377	2,712
16	C. J. Lambert	Jan. 20, 1880	48	377	2,712
17	C. J. Lambert	Jan. 20, 1880	48	377	2,712
18	John Johnson	Jan. 20, 1880	48	377	2,712
19	John Johnson	Jan. 20, 1880	48	377	2,712
20	John Johnson	Jan. 20, 1880	48	377	2,712
21	John Johnson	Jan. 20, 1880	48	377	2,712
22	John Johnson	Jan. 20, 1880	48	377	2,712
23	John Johnson	Jan. 20, 1880	48	377	2,712
24	John Johnson	Jan. 20, 1880	48	377	2,712
25	John Johnson	Jan. 20, 1880	48	377	2,712
26	John Johnson	Jan. 20, 1880	48	377	2,712
27	John Johnson	Jan. 20, 1880	48	377	2,712
28	John Johnson	Jan. 20, 1880	48	377	2,712
29	John Johnson	Jan. 20, 1880	48	377	2,712

**RIGHT OF WAY AND TRACK MAP**  
**GREEN BAY AND WESTERN R. R.**

OPERATED BY  
**GREEN BAY AND WESTERN R. R.**  
 LA CROSSE BRANCH  
 STATION 204+00 TO STATION 328+18  
 SCALE: 1 INCH = 400 FEET  
 JUNE 30 1916  
 OFFICE OF CHIEF ENGINEER  
 GREEN BAY, WIS.

