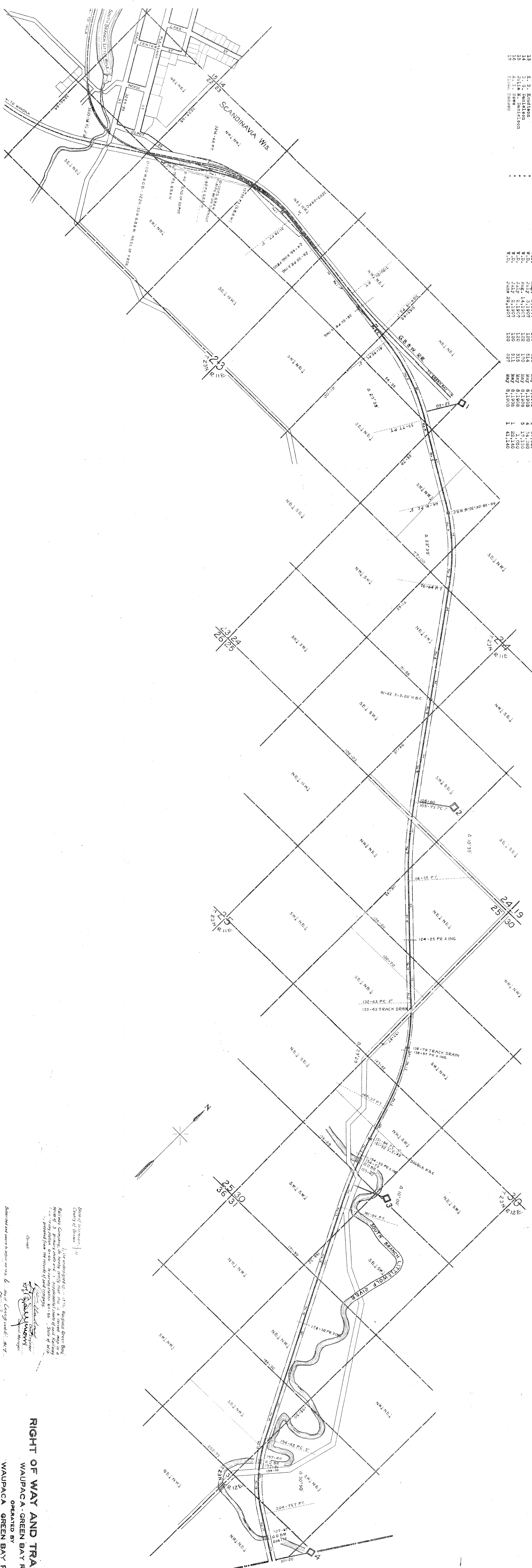


NO.	NAME	AGREEMENT	DATE	ACRES	SQ. FEET
1	W. G. B. Ry.	Dec. 1, 1910	1.22	173	1,197
2	W. G. B. Ry.	Sept. 15, 1907	1.22	173	1,197
3	W. G. B. Ry.	June 29, 1907	1.22	173	1,197
4	W. G. B. Ry.	June 29, 1907	1.22	173	1,197
5	W. G. B. Ry.	June 29, 1907	1.22	173	1,197
6	W. G. B. Ry.	June 29, 1907	1.22	173	1,197
7	W. G. B. Ry.	June 29, 1907	1.22	173	1,197
8	W. G. B. Ry.	June 29, 1907	1.22	173	1,197
9	W. G. B. Ry.	June 29, 1907	1.22	173	1,197
10	W. G. B. Ry.	June 29, 1907	1.22	173	1,197
11	W. G. B. Ry.	June 29, 1907	1.22	173	1,197
12	W. G. B. Ry.	June 29, 1907	1.22	173	1,197
13	W. G. B. Ry.	June 29, 1907	1.22	173	1,197
14	W. G. B. Ry.	June 29, 1907	1.22	173	1,197
15	W. G. B. Ry.	June 29, 1907	1.22	173	1,197
16	W. G. B. Ry.	June 29, 1907	1.22	173	1,197



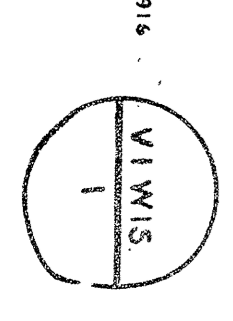
State of Wisconsin  
 County of Brown  
 I, the undersigned, do hereby certify that this is a correct map in accordance with the provisions of the laws of the State of Wisconsin, and that the same has been prepared from the records of said county.

Witness my hand and the seal of said county, this 21st day of June, 1911.

CHIEF ENGINEER  
 W. G. B. RY.

**RIGHT OF WAY AND TRACK MAP**  
**WAUPACA-GREEN BAY RY.**

OPERATED BY  
**WAUPACA GREEN BAY RY.**  
 STATION 0+00 TO STATION 21+70  
 SCALE 1 INCH = 400 FEET  
 JUNE 20, 1911  
 OFFICE OF CHIEF ENGINEER

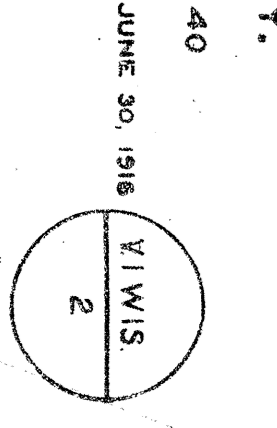




NUMBER	OWNER	SECTION	ACRES	DATE	BOOK	PAGE	DATE	ACRES	REMARKS
1	SIGOR Hansen	Waupaca Green Bay R.R.	7	June 29, 1907	120	537	Aug. 8, 1908	7	29,588
2	Alfred A. Nelson	"	7	Aug. 3, 1907	120	537	Aug. 8, 1908	7	1,320
3	Frederick Nelson	"	7	Aug. 3, 1907	120	537	Aug. 8, 1908	7	21,700
4	John Johnson	"	7	July 2, 1907	120	517	Aug. 8, 1908	7	2,150
5	John Johnson	"	7	July 19, 1907	120	506	Aug. 8, 1908	7	27,150
6	John Johnson	"	7	July 19, 1907	120	506	Aug. 8, 1908	7	30,540
7	John Johnson	"	7	July 19, 1907	120	506	Aug. 8, 1908	7	42,940
8	John Johnson	"	7	July 19, 1907	120	506	Aug. 8, 1908	7	49,430
9	John Johnson	"	7	July 19, 1907	120	506	Aug. 8, 1908	7	23,640
10	John Johnson	"	7	July 19, 1907	120	506	Aug. 8, 1908	7	700
11	John Johnson	"	7	July 19, 1907	120	506	Aug. 8, 1908	7	9,380
12	John Johnson	"	7	July 19, 1907	120	506	Aug. 8, 1908	7	11,720
13	John Johnson	"	7	July 19, 1907	120	506	Aug. 8, 1908	7	41,720
14	John Johnson	"	7	July 19, 1907	120	506	Aug. 8, 1908	7	21,880
15	John Johnson	"	7	July 19, 1907	120	506	Aug. 8, 1908	7	
16	John Johnson	"	7	July 19, 1907	120	506	Aug. 8, 1908	7	
17	John Johnson	"	7	July 19, 1907	120	506	Aug. 8, 1908	7	

**RIGHT OF WAY AND TRACK MAP**  
**WAUPACA - GREEN BAY RY.**  
 OPERATED BY  
**WAUPACA - GREEN BAY RY.**  
 STATION 211+20 TO STATION 422+40  
 SCALE: 1 inch = 400 FEET  
 JUNE 30, 1918  
 OFFICE OF CHIEF ENGINEER  
 GREEN BAY, WIS.

Sheet No. 8 of 4 of the Waupaca Green Bay Railway Company  
 from survey of the S.W. 1/4 of Sec. 4, T. 22 N., R. 12 E.,  
 S. 1/2 of Sec. 5, T. 22 N., R. 12 E.,  
 S. 1/2 of Sec. 6, T. 22 N., R. 12 E.,  
 S. 1/2 of Sec. 8, T. 22 N., R. 12 E.,  
 Green Bay, Wis.





NO.	OWNER	DATE	ACRES	AMOUNT	REMARKS
1	Wm. M. W. R.	Aug. 2, 1907	120	512	May 8, 1908
2	H. J. Jensen	Aug. 2, 1907	120	528	May 8, 1908
3	Julius Green	Aug. 2, 1907	120	544	May 8, 1908
4	J. Woodworth	June 27, 1907	120	560	May 8, 1908
5	F. C. A. Peterson	July 1, 1907	120	576	May 8, 1908
6	H. J. Jensen	July 1, 1907	120	592	May 8, 1908
7	H. J. Jensen	July 1, 1907	120	608	May 8, 1908
8	H. J. Jensen	July 1, 1907	120	624	May 8, 1908
9	H. J. Jensen	July 1, 1907	120	640	May 8, 1908
10	H. J. Jensen	July 1, 1907	120	656	May 8, 1908
11	H. J. Jensen	July 1, 1907	120	672	May 8, 1908
12	H. J. Jensen	July 1, 1907	120	688	May 8, 1908
13	H. J. Jensen	July 1, 1907	120	704	May 8, 1908
14	H. J. Jensen	July 1, 1907	120	720	May 8, 1908
15	H. J. Jensen	July 1, 1907	120	736	May 8, 1908
16	H. J. Jensen	July 1, 1907	120	752	May 8, 1908
17	H. J. Jensen	July 1, 1907	120	768	May 8, 1908
18	H. J. Jensen	July 1, 1907	120	784	May 8, 1908
19	H. J. Jensen	July 1, 1907	120	800	May 8, 1908
20	H. J. Jensen	July 1, 1907	120	816	May 8, 1908
21	H. J. Jensen	July 1, 1907	120	832	May 8, 1908
22	H. J. Jensen	July 1, 1907	120	848	May 8, 1908
23	H. J. Jensen	July 1, 1907	120	864	May 8, 1908
24	H. J. Jensen	July 1, 1907	120	880	May 8, 1908
25	H. J. Jensen	July 1, 1907	120	896	May 8, 1908
26	H. J. Jensen	July 1, 1907	120	912	May 8, 1908
27	H. J. Jensen	July 1, 1907	120	928	May 8, 1908
28	H. J. Jensen	July 1, 1907	120	944	May 8, 1908
29	H. J. Jensen	July 1, 1907	120	960	May 8, 1908
30	H. J. Jensen	July 1, 1907	120	976	May 8, 1908
31	H. J. Jensen	July 1, 1907	120	992	May 8, 1908
32	H. J. Jensen	July 1, 1907	120	1008	May 8, 1908
33	H. J. Jensen	July 1, 1907	120	1024	May 8, 1908
34	H. J. Jensen	July 1, 1907	120	1040	May 8, 1908
35	H. J. Jensen	July 1, 1907	120	1056	May 8, 1908
36	H. J. Jensen	July 1, 1907	120	1072	May 8, 1908

**RIGHT OF WAY AND TRACK MAP**  
**WAUPACA - GREEN BAY RY.**

STATION 422+40 TO STATION 513+59  
 SCALE: 1 INCH = 400 FEET  
 OFFICE OF CHIEF ENGINEER  
 GREEN BAY, WIS.

