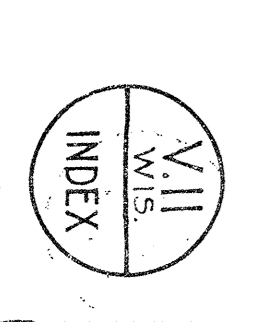
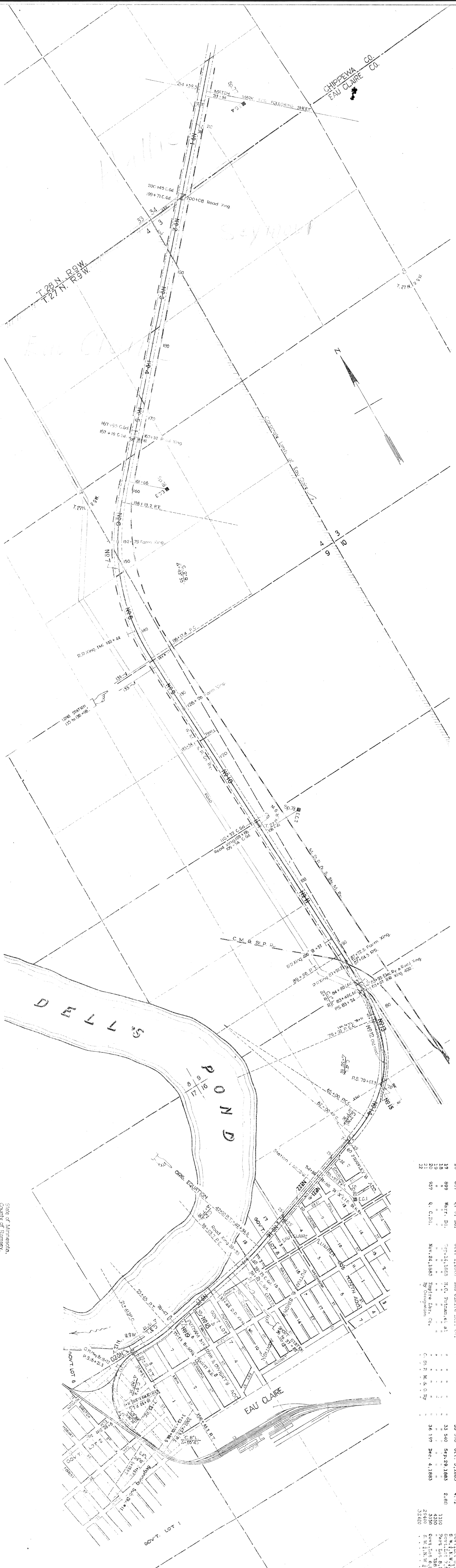


**INDEX MAP**  
 CHICAGO, ST. PAUL, MINNEAPOLIS AND OMAHA RAILWAY CO.  
 NORTHERN DIVISION  
 OPERATED BY C.S.P.M. & O.R.W.C.O.  
 ST. PAUL, MINN.

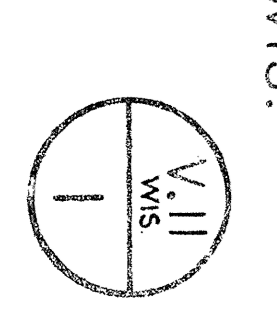


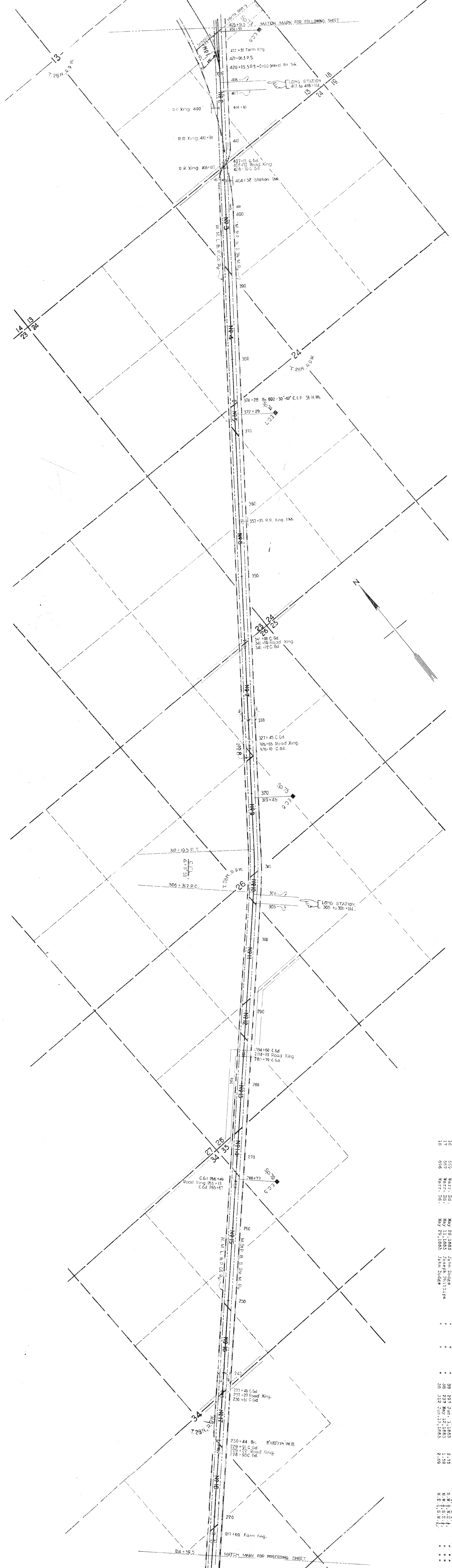


Part Contg. Plat. Contg. No. of Acre.	Instrument	Date	Operator	Reference	Acres	Area	Remarks
1	Warr. M.	May 11, 1883	A. J. Chesney	EAU CLAIRE & CH. FALLS RY. CO.	38.234	4.37	S. 1/2 S. W. 1/4, 34-28-9 W.
2	Warr. M.	May 21, 1883	James W. Woodward	"	38.207	4.37	"
3	Warr. M.	May 21, 1883	Isabella Fisher	"	38.488	4.37	"
4	Warr. M.	May 21, 1883	Robert P. Smith	"	33.233	4.37	"
5	Warr. M.	May 21, 1883	William H. Phillips	"	33.286	4.37	"
6	Warr. M.	May 21, 1883	William H. Phillips	"	33.366	4.37	"
7	Warr. M.	May 21, 1883	William H. Phillips	"	33.466	4.37	"
8	Warr. M.	May 21, 1883	William H. Phillips	"	33.244	4.37	"
9	Warr. M.	May 21, 1883	William H. Phillips	"	33.244	4.37	"
10	Warr. M.	May 21, 1883	William H. Phillips	"	33.244	4.37	"
11	Warr. M.	May 21, 1883	William H. Phillips	"	33.244	4.37	"
12	Warr. M.	May 21, 1883	William H. Phillips	"	33.244	4.37	"
13	Warr. M.	May 21, 1883	William H. Phillips	"	33.244	4.37	"
14	Warr. M.	May 21, 1883	William H. Phillips	"	33.244	4.37	"
15	Warr. M.	May 21, 1883	William H. Phillips	"	33.244	4.37	"
16	Warr. M.	May 21, 1883	William H. Phillips	"	33.244	4.37	"
17	Warr. M.	May 21, 1883	William H. Phillips	"	33.244	4.37	"
18	Warr. M.	May 21, 1883	William H. Phillips	"	33.244	4.37	"
19	Warr. M.	May 21, 1883	William H. Phillips	"	33.244	4.37	"
20	Warr. M.	May 21, 1883	William H. Phillips	"	33.244	4.37	"
21	Warr. M.	May 21, 1883	William H. Phillips	"	33.244	4.37	"
22	Warr. M.	May 21, 1883	William H. Phillips	"	33.244	4.37	"

State of Minnesota,  
 County of Ramsey,  
 I, Valuation Engineer,  
 do hereby certify that this is a correct map, in a  
 series of 20 primary sheets and 14 supplemental  
 sheets of said Railway, from survey station 3403  
 North Division, Main Line, State of Wisconsin,  
 from the records of said company.  
 Correct: Valuation Engineer  
 My commission expires 19 day of 19  
 Chief Engineer  
 Subscribed and sworn to before me this 19  
 day of 19  
 Notary Public in and for the  
 County of Ramsey,  
 State of Minnesota.

RIGHT OF WAY AND TRACK MAP  
 CHICAGO, ST. PAUL, MINNEAPOLIS & OMAHA RAILWAY  
 NORTHERN DIVISION  
 EAU CLAIRE, WIS. TO SPOONER, WIS.  
 STA. 3403 TO STA. 241935  
 SCALE: 1 IN. = 100 FT.  
 DATE: \_\_\_\_\_  
 OFFICE OF CHIEF ENGINEER  
 ST. PAUL, MINN.



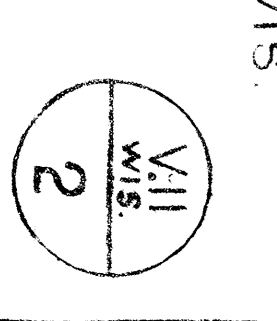


Sta.	Cont'd.	Inst.	Date	Surveyor	Station	Area	Remarks
214+50.5	1	Warr. D.	May 16, 1890	Stephen Schell	C.S.P.M.A. O. Ry. Co.	1.55	E. I. E. 1.
215+00	2	Warr. D.	May 20, 1893	Thomas A. Ross	E.C.K. Chi. & Falg.	4.27	E. I. E. 1.
215+50	3	Warr. D.	May 11, 1893	Elizabeth A. Dibble	"	3.52	E. I. E. 1.
216+00	4	Warr. D.	May 10, 1893	Certina C. McCann	"	1.52	E. I. E. 1.
216+50	5	Warr. D.	May 8, 1893	John R. Salter	"	380.00	E. I. E. 1.
217+00	6	Warr. D.	May 8, 1893	William Melville	"	6.72	E. I. E. 1.
217+50	7	Warr. D.	Jun 9, 1893	Francis W. Woodard	"	3.45	E. I. E. 1.
218+00	8	Warr. D.	Jun 9, 1893	Bridger State Lumber Co.	"	82.25	E. I. E. 1.
218+50	9	Warr. D.	Jun 11, 1893	Martin Dyer	"	3.66	E. I. E. 1.
219+00	10	Warr. D.	Jun 11, 1893	Bridger State Lumber Co.	"	3790	E. I. E. 1.
219+50	11	Warr. D.	Jun 5, 1893	Bridger State Lumber Co.	"	1.14	E. I. E. 1.
220+00	12	Warr. D.	May 20, 1893	C. N. Ogawa Lumber Co.	"	1.32	E. I. E. 1.
220+50	13	Warr. D.	May 29, 1893	Jimmie Stearns	"	4.28	E. I. E. 1.
221+00	14	Warr. D.	May 29, 1893	John Dodge	"	2.75	E. I. E. 1.
221+50	15	Warr. D.	May 29, 1893	John Dodge	"	4.75	E. I. E. 1.
222+00	16	Warr. D.	May 29, 1893	John Dodge	"	2.69	E. I. E. 1.
222+50	17	Warr. D.	May 29, 1893	John Dodge	"	2.69	E. I. E. 1.
223+00	18	Warr. D.	May 29, 1893	John Dodge	"	2.69	E. I. E. 1.

RIGHT OF WAY AND TRACK MAP  
 CHICAGO, ST. PAUL, MINNEAPOLIS & OMAHA RAILWAY  
 OPERATED BY C. ST. P. & M. & O. RY. CO.  
 NORTHERN DIVISION  
 EAU CLAIRE, WIS. TO SPOONER, WIS.

Sheet No. 2 of 20 sheets of Chicago, St. Paul, Minneapolis and Omaha Railway, Northern Division, Map No. 42570, 5, survey station 241595, to survey station 42570, 5.

SCALE: 1 IN. = 100 FT.  
 OFFICE OF CHIEF ENGINEER  
 ST. PAUL, MINN.

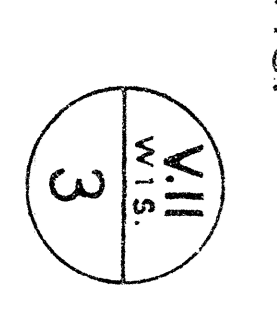


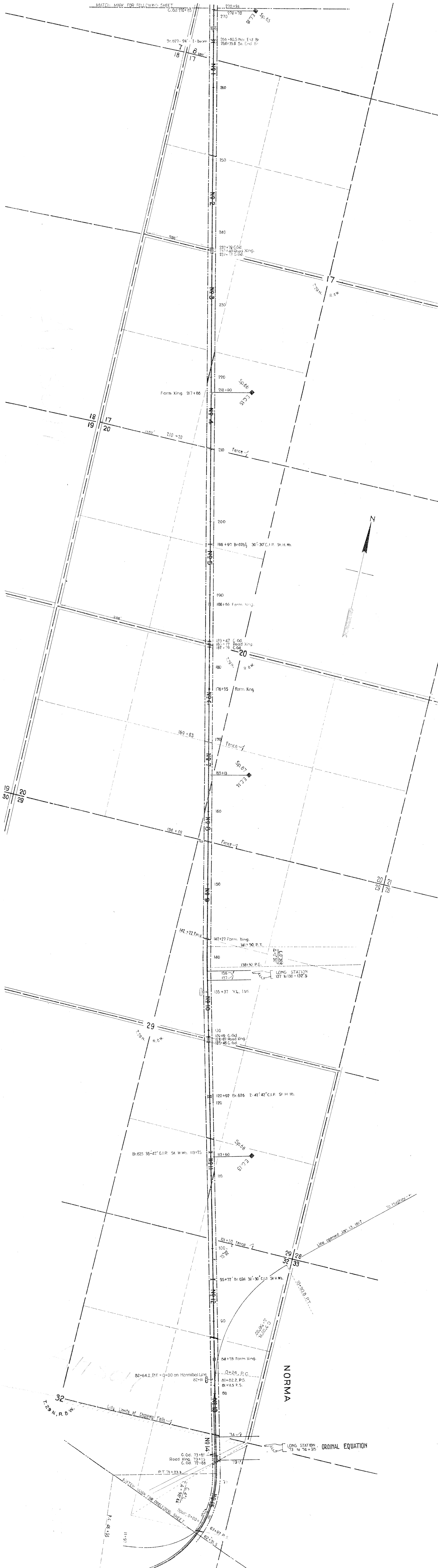


Part-Cont'd of diagram No.	Cont'd No.	Instrument	Date	Grantor	Grantee	Book	Page	R. E. C. R. D. Date	Acres	S. M. L.	Remarks
1	631	Condemnation	Apr. 12, 1882	Julia Spafford	C. F. & N. Ry. Co.	CL-CT-384	3-12		3.12	S. E. 1/4 S. E. 1/4	20-20-6 W.
2	667	Warr. De.	Apr. 12, 1882	Margaret J. Harding	"	CL-CT-384	6-38	Apr. 26, 1882	6.38	S. E. 1/4 S. E. 1/4	"
3	631	Condemnation	Apr. 3, 1882	Mary A. Mansfield	"	CL-CT-384	1-93	Apr. 8, 1882	1.93	S. W. 1/4 S. E. 1/4	"
4	665	Warr. De.	Apr. 30, 1881	Mary A. Mansfield	"	CL-CT-384	1-69	Apr. 19, 1881	1.69	S. W. 1/4 S. E. 1/4	"
5	665	Warr. De.	Apr. 30, 1881	Mary A. Mansfield	"	CL-CT-384	1-69	Apr. 19, 1881	1.69	S. W. 1/4 S. E. 1/4	"
6	669	Warr. De.	Feb. 9, 1882	Mary A. Mansfield	"	CL-CT-384	2-70	Feb. 21, 1882	2.70	S. W. 1/4 S. E. 1/4	"
7	682	Warr. De.	Jan. 1, 1883	Francis W. Woodward	E. C. & C. F. Ry. Co.	CL-CT-384	4-10	Jan. 6, 1883	4.10	E. 1/2 S. E. 1/4	7-28-6
8	663	Condemnation	Nov. 29, 1883	et al.	"	CL-CT-384	2-113	Nov. 1, 1883	2.113	E. 1/2 S. E. 1/4	"
9	693	Warr. De.	Oct. 31, 1883	W. O. Snow	"	CL-CT-384	5-45	Nov. 10, 1883	5.45	E. 1/2 S. E. 1/4	"
10	693	Warr. De.	May 30, 1883	Catherine Van Name	"	CL-CT-384	1-96	Jun. 1, 1883	1.96	S. W. 1/4 S. E. 1/4	"
11	693	Warr. De.	May 7, 1883	L. Esterman, et al.	"	CL-CT-384	1-96	Jun. 1, 1883	1.96	S. W. 1/4 S. E. 1/4	"
12	663	Condemnation	May 29, 1883	Em. Walker	"	CL-CT-384	2-63	Jun. 1, 1883	2.63	N. E. 1/4 S. E. 1/4	18-28-6
13	458	Warr. De.	May 30, 1883	Theophile Patenaud	"	CL-CT-384	1-09	Jun. 1, 1883	1.09	N. E. 1/4 S. E. 1/4	"
14	472	Warr. De.	May 29, 1883	Karl Felix	"	CL-CT-384	1-18	Jun. 1, 1883	1.18	N. E. 1/4 S. E. 1/4	"
15	474	Warr. De.	May 29, 1883	Albion K. Stafford	"	CL-CT-384	5-18	Jun. 1, 1883	5.18	N. W. 1/4 S. E. 1/4	"
16	474	Warr. De.	May 29, 1883	Albion K. Stafford	"	CL-CT-384	5-18	Jun. 1, 1883	5.18	N. W. 1/4 S. E. 1/4	"
17	6287	Warr. De.	May 16, 1900	A. K. Stafford	C. St. P. & O. Ry. Co.	324	May 17, 1900	25.66	16000	Vacation of old Highway.	"

RIGHT OF WAY AND TRACK MAP  
 CHICAGO, ST. PAUL, MINNEAPOLIS & OMAHA RAILWAY  
 NORTHERN DIVISION  
 EAU CLAIRE, WIS. TO SPOONER, WIS.

Sheet No. 3 of 20 sheets of Chicago, St. Paul, Minneapolis and Omaha Railway, Northern Division, Main Line, from survey station 425+51.5 to survey station 627+1.2  
 SCALE: 1 IN. = 100 FT.  
 DATE: \_\_\_\_\_  
 OFFICE OF CHIEF ENGINEER  
 ST. PAUL, MINN.  
 VALUATION ENGINEER





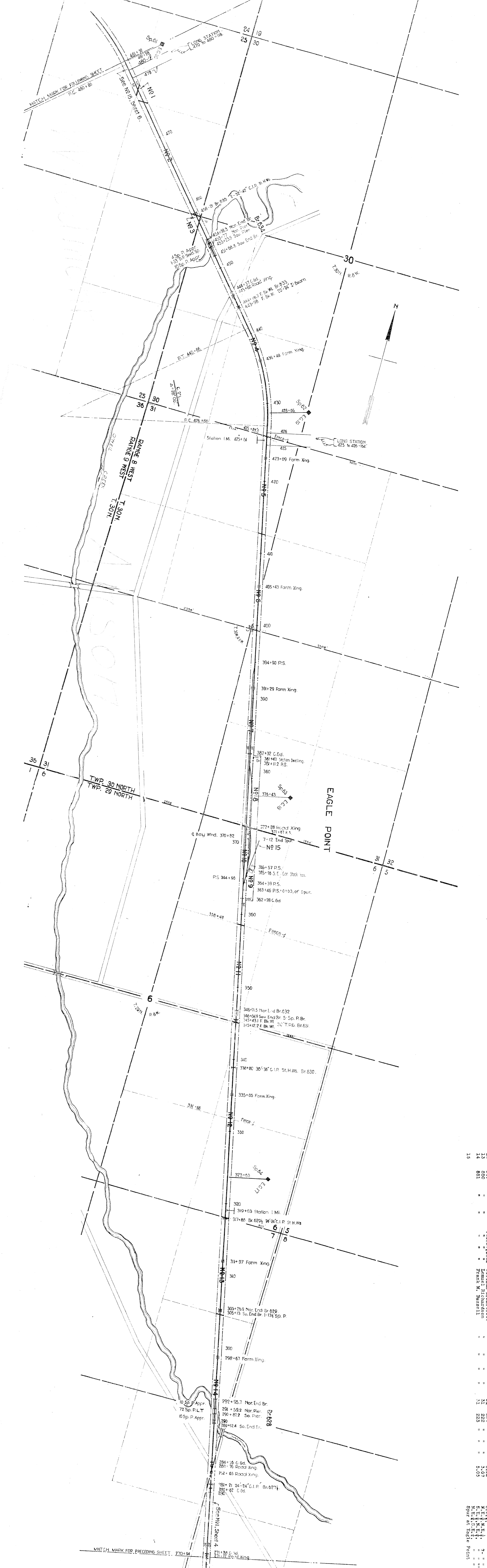
Part. Quant. - ccl. diam's	Inst. diam's	Instrument	Date	Operator	Remarks
1	852	Warr. Dk.	Aug. 2, 1881	James H. Woodruff et al	
2	853	Warr. Dk.	Aug. 2, 1881	C. Emerson Joslyn	
3	854	Warr. Dk.	Aug. 2, 1881	John Hayes	
4	855	Warr. Dk.	Aug. 2, 1881	John Hayes	
5	856	Warr. Dk.	Aug. 2, 1881	John Hayes	
6	857	Warr. Dk.	Aug. 2, 1881	John Hayes	
7	858	Warr. Dk.	Aug. 2, 1881	John Hayes	
8	859	Warr. Dk.	Aug. 2, 1881	John Hayes	
9	860	Warr. Dk.	Aug. 2, 1881	John Hayes	
10	861	Warr. Dk.	Aug. 2, 1881	John Hayes	
11	862	Warr. Dk.	Aug. 2, 1881	John Hayes	
12	863	Warr. Dk.	Aug. 2, 1881	John Hayes	
13	864	Warr. Dk.	Aug. 2, 1881	John Hayes	
14	865	Warr. Dk.	Aug. 2, 1881	John Hayes	
15	866	Warr. Dk.	Aug. 2, 1881	John Hayes	

RIGHT OF WAY AND TRACK MAP  
CHICAGO, ST. PAUL, MINNEAPOLIS & OMAHA RAILWAY  
NORTHERN DIVISION  
EAU CLAIRE, WIS. TO SPOONER, WIS.

Sheet No. 4 of 20 sheets of Chicago, St. Paul, Minneapolis and Omaha Railway, Northern Division, Station 270+00 to Survey Station 62+21.5 to Survey Station 270+00.

SCALE: 1 IN. = 100 FT.  
DATE: \_\_\_\_\_  
OFFICE OF CHIEF ENGINEER  
ST. PAUL, MINN.

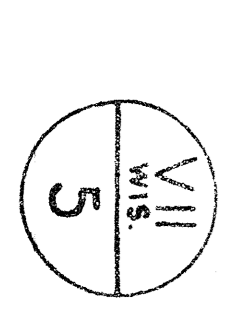
VALUATION ENGINEER



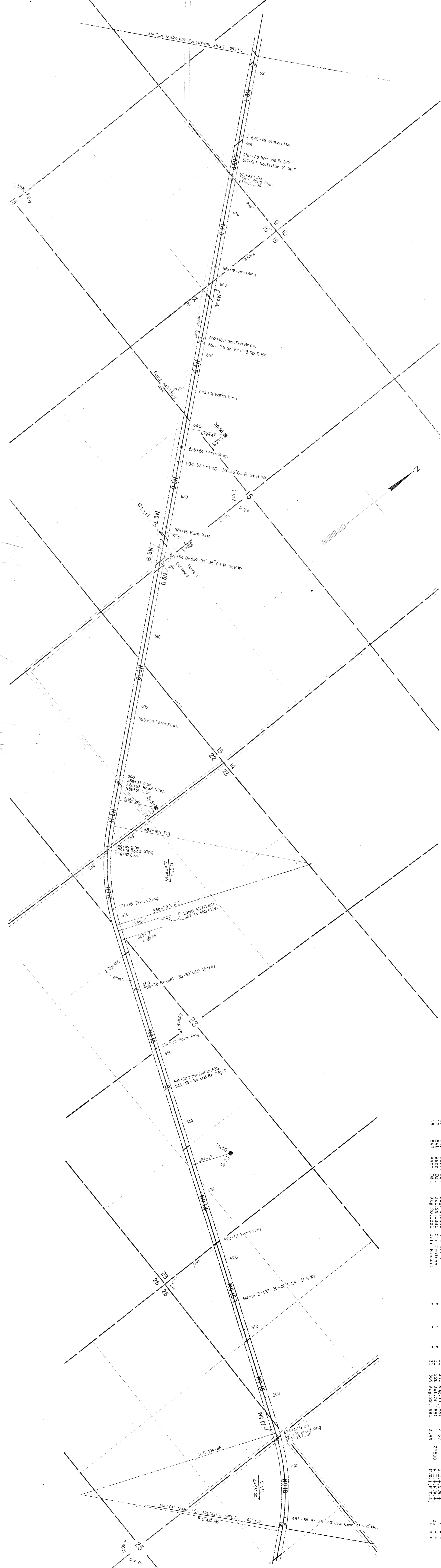
Pat. No.	Dist. No.	Instrument	Date	Grantor	Grantee	Acres	Remarks
1	631	Condemnation	Aug. 23, 1861	Frank Roswell	C. F. & N. Ry. Co.	3.96	1900
2	7978	Patent	Aug. 24, 1872	United States	West Wisconsin Ry. Co.	1.16	11500
3	843	Warr. Id.	Aug. 15, 1861	John Roswell	C. F. & N. Ry. Co.	7.34	
4	844	"	Aug. 15, 1861	John Roswell	C. F. & N. Ry. Co.	3.11	
5	845	"	Aug. 15, 1861	John Roswell	C. F. & N. Ry. Co.	3.11	
6	846	"	Aug. 25, 1861	Wilson Hopkins	C. F. & N. Ry. Co.	3.07	
7	831	Warr. Id.	Jul. 11, 1864	William Frederick	C. F. & N. Ry. Co.	6.23	
8	631	"	Jul. 11, 1864	John B. Bane	C. F. & N. Ry. Co.	2.31	
9	747	"	Jul. 11, 1864	John B. Bane	C. F. & N. Ry. Co.	2.30	
10	646	"	Jul. 27, 1861	William D. Bartlett	C. F. & N. Ry. Co.	2.68	
11	648	"	Jul. 27, 1861	William D. Bartlett	C. F. & N. Ry. Co.	2.68	
12	649	"	Jul. 27, 1861	Thomas Richardson	C. F. & N. Ry. Co.	6.22	
13	650	"	"	Frank W. Swartzell	C. F. & N. Ry. Co.	3.07	
14	651	"	"	"	"	3.07	
15	652	"	"	"	"	3.07	Spur at Eagle Point

RIGHT OF WAY AND TRACK MAP  
 CHICAGO, ST. PAUL, MINNEAPOLIS & OMAHA RAILWAY  
 OPERATED BY C. ST. P. M. & O. RY. CO.  
 NORTHERN DIVISION  
 EAU CLAIRE, WIS. TO SPOONER, WIS.

Sheet No. 5 of 20 sheets of Chicago, St. Paul, Minneapolis and Omaha Railway, Northern Division, Main Line, from survey station 270+94 to survey station 481+32.  
 SCALE: 1 IN. = 100 FT.  
 OFFICE OF CHIEF ENGINEER  
 ST. PAUL, MINN.



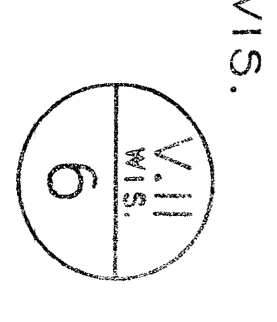
Woodmole

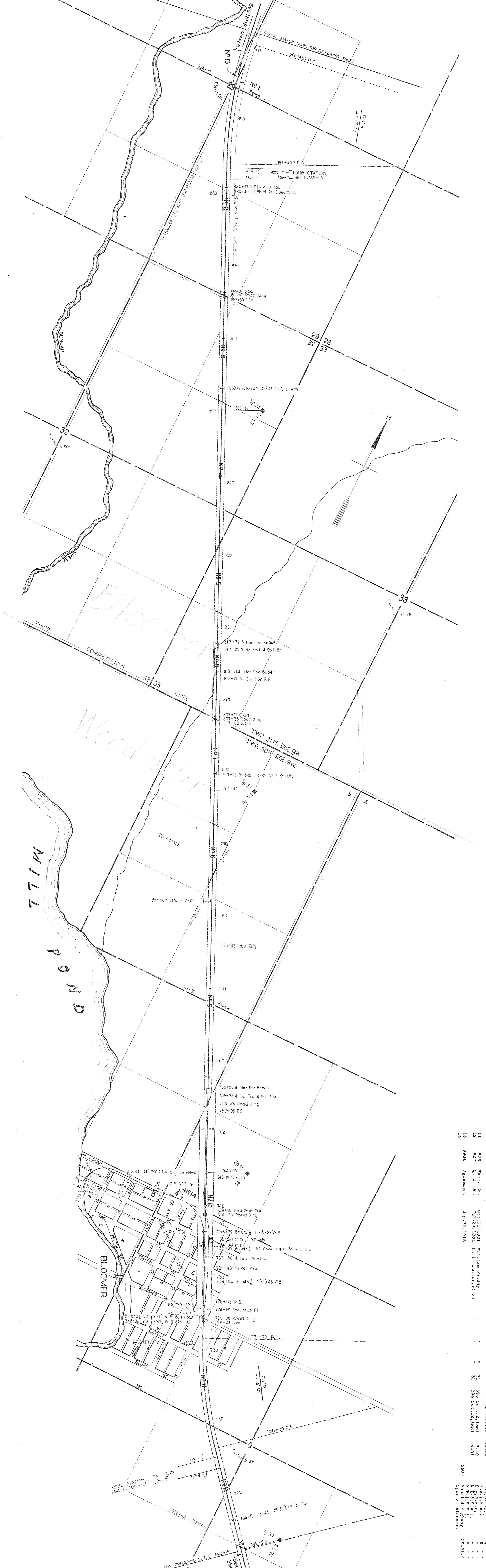


Part-Station No.	Station	Date	Grantor	Grantee	R.F.C.O.P.D. Book Page	A.P.E.A. Acres	Remarks
1	628	Aug. 9, 1881	Joseph H. Coburn	C. F. & N. Ry. Co.	270	2.46	S.W. 1/4 S.E. 1/4
2	629	Aug. 9, 1881	Ole Brunstad	"	31	1.13	S.E. 1/4 S.E. 1/4
3	630	Aug. 22, 1881	Mary Hartman	"	267	3.43	N.E. 1/4 N.W. 1/4
4	631	Aug. 16, 1881	Andrew Neume	"	268	22500	N.E. 1/4 N.W. 1/4
5	632	Aug. 16, 1881	Sarah J. Ward, et al.	"	31	3.93	N.E. 1/4 N.W. 1/4
6	633	Apr. 22, 1882	Tommy Superior Bigomer	C. F. & N. Ry. Co.	31	3.88	N.E. 1/4 N.W. 1/4
7	634	Aug. 9, 1881	Hans Peterson	"	263	6.99	Change of Highway
8	635	Jul. 29, 1881	Ole Berg	"	229	2500	S.E. 1/4 S.E. 1/4
9	636	Aug. 22, 1881	Ole Nilsson	"	307	2.19	N.E. 1/4 N.W. 1/4
10	637	Aug. 9, 1881	Anna S. Jackson	"	261	3.35	N.W. 1/4 S.W. 1/4
11	638	Aug. 9, 1881	Jacob Tjenderson	"	260	6.51	N.W. 1/4 S.W. 1/4
12	639	Jul. 29, 1881	Isaac Peterson	"	228	3.23	E. 1/4 S.E. 1/4
13	640	Aug. 9, 1881	Vil. Gillen	"	228	3.27	N.E. 1/4 N.W. 1/4
14	641	Aug. 20, 1881	John Rosebel	"	309	27500	N.E. 1/4 N.W. 1/4
15	642	Aug. 20, 1881	John Rosebel	"	309	3.86	N.W. 1/4 N.E. 1/4

RIGHT OF WAY AND TRACK MAP  
CHICAGO, ST. PAUL, MINNEAPOLIS & OMAHA RAILWAY  
NORTHERN DIVISION  
EAU CLAIRE, WIS. TO SPOONER, WIS.

Sheet No. 6 of 20 sheets of Chicago, St. Paul, Minneapolis and Omaha Railway, Northern Division, Main Line, from Survey Station 481+32 to Survey Station 692+13.  
SCALE: 1 IN. = 100 FT.  
DATE: \_\_\_\_\_  
OFFICE OF CHIEF ENGINEER  
ST. PAUL, MINN.  
Valuation Engineer

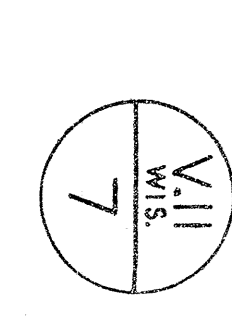
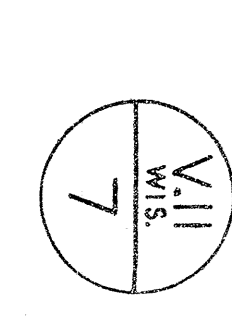




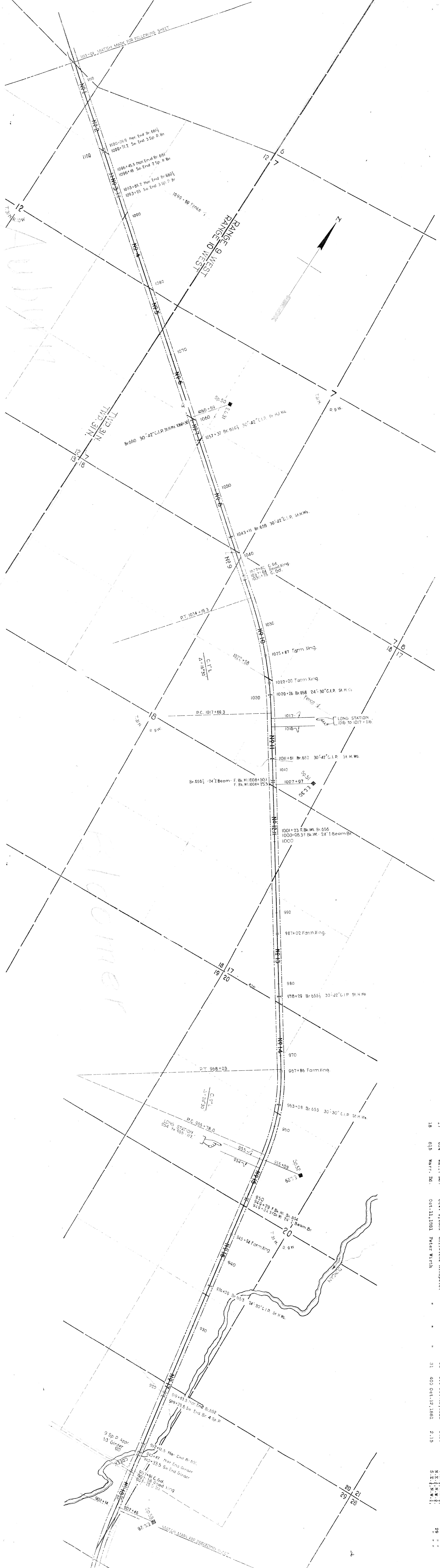
Part	Order	Inst.	Date	Grantor	Grantee	Book	Page	Area	Remarks
1	615	Warr. De.	Nov. 14, 1881	Marion J. Williams et al	C. F. & N. Ry. Co.	35	2 Jan. 9, 1882	6.50	6.50
2	616	Warr. De.	Nov. 23, 1881	Richard Williams et al	"	31	501 Nov. 23, 1881	6.50	6.50
3	619	Warr. De.	Aug. 23, 1881	William Berg	"	31	317 Aug. 23, 1881	4.85	4.85
4	619	Warr. De.	Aug. 23, 1881	William Berg	"	31	317 Aug. 23, 1881	4.85	4.85
5	620	Warr. De.	Sept. 21, 1881	Charles Albrecht	"	31	320 Oct. 12, 1881	2.14	2.14
6	621	Warr. De.	Aug. 23, 1881	Timon Hokkari	"	31	320 Oct. 12, 1881	2.34	2.34
7	622	Warr. De.	Aug. 23, 1881	Arthur W. Smith	"	31	320 Oct. 12, 1881	2.34	2.34
8	623	Warr. De.	Aug. 23, 1881	Sylvester Van Loan	"	31	317 Aug. 24, 1881	7.27	7.27
9	624	Warr. De.	Aug. 23, 1881	Sylvester Van Loan	"	31	317 Aug. 24, 1881	13.61	13.61
10	625	Warr. De.	Aug. 23, 1881	Sylvester Van Loan	"	31	317 Aug. 24, 1881	13.61	13.61
11	626	Warr. De.	Oct. 10, 1881	William Priddy	"	31	326 Oct. 12, 1881	3.40	3.40
12	627	Q. C. De.	Jul. 29, 1881	L. D. Dutton et al	"	31	326 Oct. 12, 1881	4.01	4.01
13	9984	Agreement	Sep. 28, 1916						6600

RIGHT OF WAY AND TRACK MAP  
 CHICAGO, ST. PAUL, MINNEAPOLIS & OMAHA RAILWAY  
 OPERATED BY C. ST. P. M. & O. RY. CO.  
 NORTHERN DIVISION  
 EAU CLAIRE, WIS. TO SPOONER, WIS.

Sheet No. 7 of 20 sheets of Chicago, St. Paul, Minneapolis and Omaha Railway, Northern Division, Main Line, from survey station 692+13  
 SCALE: 1 IN. = 100 FT.  
 DATE: \_\_\_\_\_  
 OFFICE OF CHIEF ENGINEER  
 ST. PAUL, MINN.



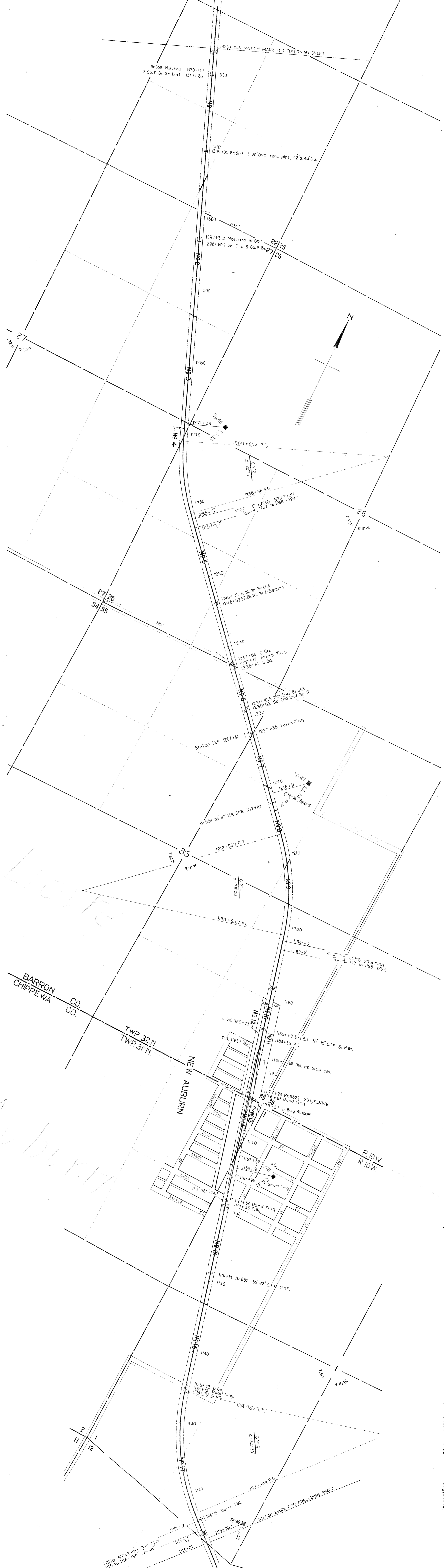




SPOONER  
 SPOONER

Station No.	Date	Work Done	Remarks
1	Nov. 30, 1881	Thomas Emmerton	
2	Nov. 24, 1881	John Miller	
3	Nov. 24, 1881	I. C. Stanley	
4	Nov. 17, 1881	George C. Hubener	
5	Nov. 17, 1881	John A. Smith	
6	Oct. 12, 1881	John A. Smith, et al.	
7	Oct. 12, 1881	John A. Smith, et al.	
8	Oct. 12, 1881	Christoph Summerfeldt	
9	Nov. 13, 1881	Mary C. Schroeder	
10	Nov. 13, 1881	John Somers	
11	Nov. 13, 1881	John Somers	
12	Nov. 13, 1881	John Somers	
13	Nov. 13, 1881	John Somers	
14	Nov. 13, 1881	John Somers	
15	Nov. 13, 1881	John Somers	
16	Nov. 13, 1881	John Somers	
17	Nov. 13, 1881	John Somers	
18	Nov. 13, 1881	John Somers	
19	Nov. 13, 1881	John Somers	
20	Nov. 13, 1881	John Somers	
21	Nov. 13, 1881	John Somers	
22	Nov. 13, 1881	John Somers	
23	Nov. 13, 1881	John Somers	
24	Nov. 13, 1881	John Somers	
25	Nov. 13, 1881	John Somers	
26	Nov. 13, 1881	John Somers	
27	Nov. 13, 1881	John Somers	
28	Nov. 13, 1881	John Somers	
29	Nov. 13, 1881	John Somers	
30	Nov. 13, 1881	John Somers	
31	Nov. 13, 1881	John Somers	
32	Nov. 13, 1881	John Somers	
33	Nov. 13, 1881	John Somers	
34	Nov. 13, 1881	John Somers	
35	Nov. 13, 1881	John Somers	
36	Nov. 13, 1881	John Somers	
37	Nov. 13, 1881	John Somers	
38	Nov. 13, 1881	John Somers	
39	Nov. 13, 1881	John Somers	
40	Nov. 13, 1881	John Somers	
41	Nov. 13, 1881	John Somers	
42	Nov. 13, 1881	John Somers	
43	Nov. 13, 1881	John Somers	
44	Nov. 13, 1881	John Somers	
45	Nov. 13, 1881	John Somers	
46	Nov. 13, 1881	John Somers	
47	Nov. 13, 1881	John Somers	
48	Nov. 13, 1881	John Somers	
49	Nov. 13, 1881	John Somers	
50	Nov. 13, 1881	John Somers	
51	Nov. 13, 1881	John Somers	
52	Nov. 13, 1881	John Somers	
53	Nov. 13, 1881	John Somers	
54	Nov. 13, 1881	John Somers	
55	Nov. 13, 1881	John Somers	
56	Nov. 13, 1881	John Somers	
57	Nov. 13, 1881	John Somers	
58	Nov. 13, 1881	John Somers	
59	Nov. 13, 1881	John Somers	
60	Nov. 13, 1881	John Somers	
61	Nov. 13, 1881	John Somers	
62	Nov. 13, 1881	John Somers	
63	Nov. 13, 1881	John Somers	
64	Nov. 13, 1881	John Somers	
65	Nov. 13, 1881	John Somers	
66	Nov. 13, 1881	John Somers	
67	Nov. 13, 1881	John Somers	
68	Nov. 13, 1881	John Somers	
69	Nov. 13, 1881	John Somers	
70	Nov. 13, 1881	John Somers	
71	Nov. 13, 1881	John Somers	
72	Nov. 13, 1881	John Somers	
73	Nov. 13, 1881	John Somers	
74	Nov. 13, 1881	John Somers	
75	Nov. 13, 1881	John Somers	
76	Nov. 13, 1881	John Somers	
77	Nov. 13, 1881	John Somers	
78	Nov. 13, 1881	John Somers	
79	Nov. 13, 1881	John Somers	
80	Nov. 13, 1881	John Somers	
81	Nov. 13, 1881	John Somers	
82	Nov. 13, 1881	John Somers	
83	Nov. 13, 1881	John Somers	
84	Nov. 13, 1881	John Somers	
85	Nov. 13, 1881	John Somers	
86	Nov. 13, 1881	John Somers	
87	Nov. 13, 1881	John Somers	
88	Nov. 13, 1881	John Somers	
89	Nov. 13, 1881	John Somers	
90	Nov. 13, 1881	John Somers	
91	Nov. 13, 1881	John Somers	
92	Nov. 13, 1881	John Somers	
93	Nov. 13, 1881	John Somers	
94	Nov. 13, 1881	John Somers	
95	Nov. 13, 1881	John Somers	
96	Nov. 13, 1881	John Somers	
97	Nov. 13, 1881	John Somers	
98	Nov. 13, 1881	John Somers	
99	Nov. 13, 1881	John Somers	
100	Nov. 13, 1881	John Somers	

RIGHT OF WAY AND TRACK MAP  
 CHICAGO, ST. PAUL, MINNEAPOLIS & OMAHA RAILWAY  
 NORTHERN DIVISION  
 EAU CLAIRE, WIS. TO SPOONER, WIS.  
 STA. 90214 TO STA. 113101  
 SCALE: 1 IN. = 100 FT.  
 OFFICE OF CHIEF ENGINEER  
 ST. PAUL, MINN.

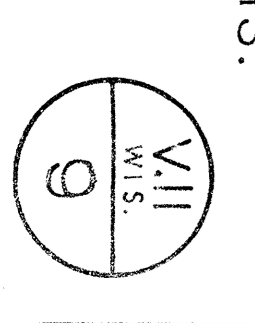


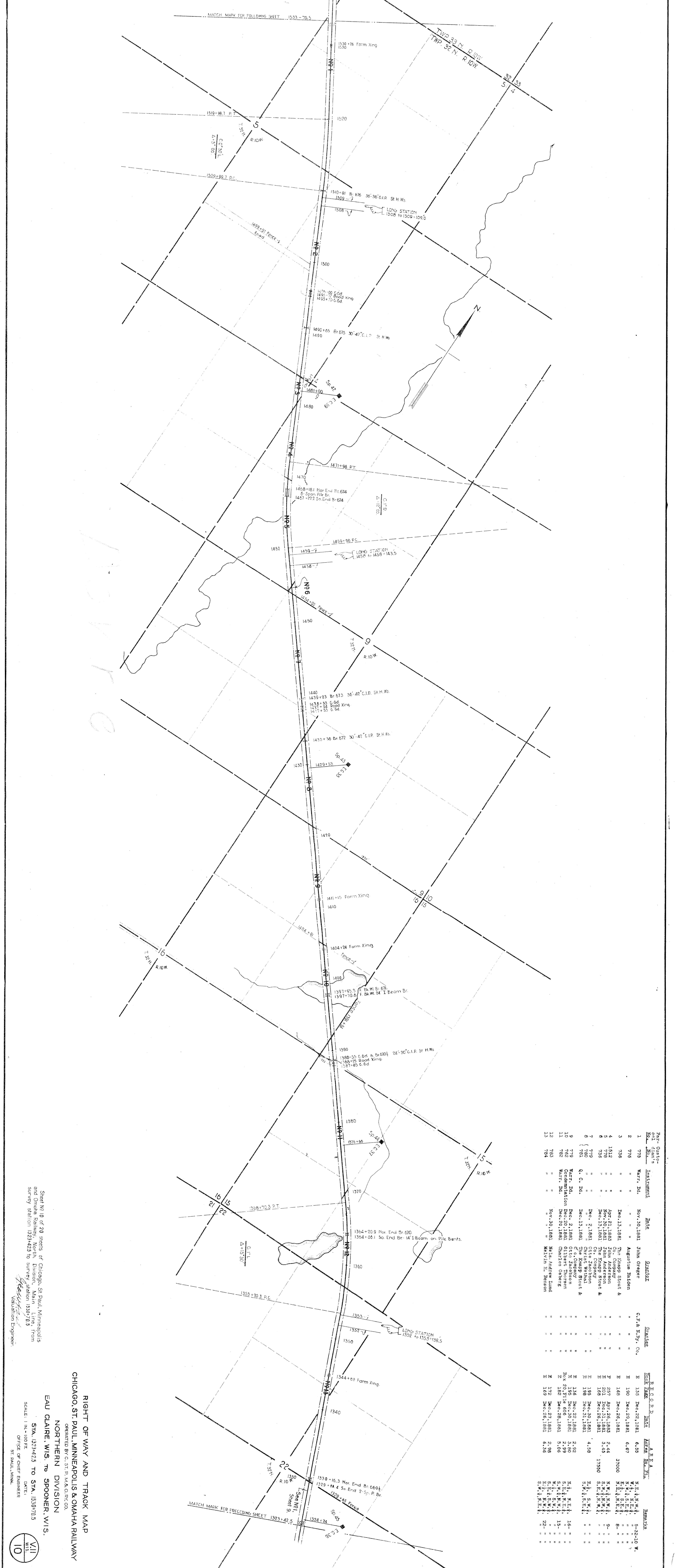
Ref. Cont.	Inst.	Date	Grantor	Grantee	Acres	Area	Remarks
1	Warr. Dd.	Nov. 24, 1881	State of Wisconsin	C. F. & N. Ry. Co.	2.69	22-32+10 W.	
2	Warr. Dd.	Nov. 24, 1881	State of Wisconsin	C. F. & N. Ry. Co.	4.24		
3	Warr. Dd.	Nov. 24, 1881	State of Wisconsin	C. F. & N. Ry. Co.	3.38		
4	Warr. Dd.	Nov. 24, 1881	State of Wisconsin	C. F. & N. Ry. Co.	7.48		
5	Warr. Dd.	Nov. 24, 1881	State of Wisconsin	C. F. & N. Ry. Co.	2.23		
6	Warr. Dd.	Nov. 24, 1881	State of Wisconsin	C. F. & N. Ry. Co.	1.74		
7	Warr. Dd.	Nov. 24, 1881	State of Wisconsin	C. F. & N. Ry. Co.	1.23		
8	Warr. Dd.	Nov. 24, 1881	State of Wisconsin	C. F. & N. Ry. Co.	1.23		
9	Warr. Dd.	Nov. 24, 1881	State of Wisconsin	C. F. & N. Ry. Co.	2.22		
10	Warr. Dd.	Nov. 24, 1881	State of Wisconsin	C. F. & N. Ry. Co.	4.28		
11	Warr. Dd.	Nov. 24, 1881	State of Wisconsin	C. F. & N. Ry. Co.	1.13		
12	Warr. Dd.	Nov. 24, 1881	State of Wisconsin	C. F. & N. Ry. Co.	3.38		
13	Warr. Dd.	Nov. 24, 1881	State of Wisconsin	C. F. & N. Ry. Co.	2.23		
14	Warr. Dd.	Nov. 24, 1881	State of Wisconsin	C. F. & N. Ry. Co.	1.84		
15	Warr. Dd.	Nov. 24, 1881	State of Wisconsin	C. F. & N. Ry. Co.	2.83		
16	Warr. Dd.	Nov. 24, 1881	State of Wisconsin	C. F. & N. Ry. Co.	2.83		
17	Warr. Dd.	Nov. 24, 1881	State of Wisconsin	C. F. & N. Ry. Co.	5.08		

RIGHT OF WAY AND TRACK MAP  
 CHICAGO, ST. PAUL, MINNEAPOLIS & OMAHA RAILWAY  
 NORTHERN DIVISION  
 EAU CLAIRE, WIS. TO SPOONER, WIS.

Sheet No. 9 of 20 sheets of Chicago, St. Paul, Minneapolis and Omaha Railway, Northern Division, Main Line, from survey station 1153+01 to 13 survey station 1323+42.5.

STA. 1139+01 TO STA. 1323+42.5  
 SCALE: 1" = 100 FT.  
 OFFICE OF CHIEF ENGINEER  
 ST. PAUL, MINN.



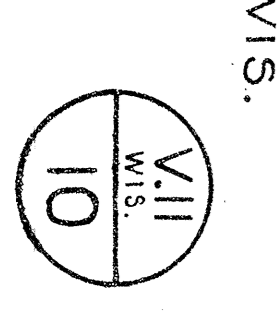


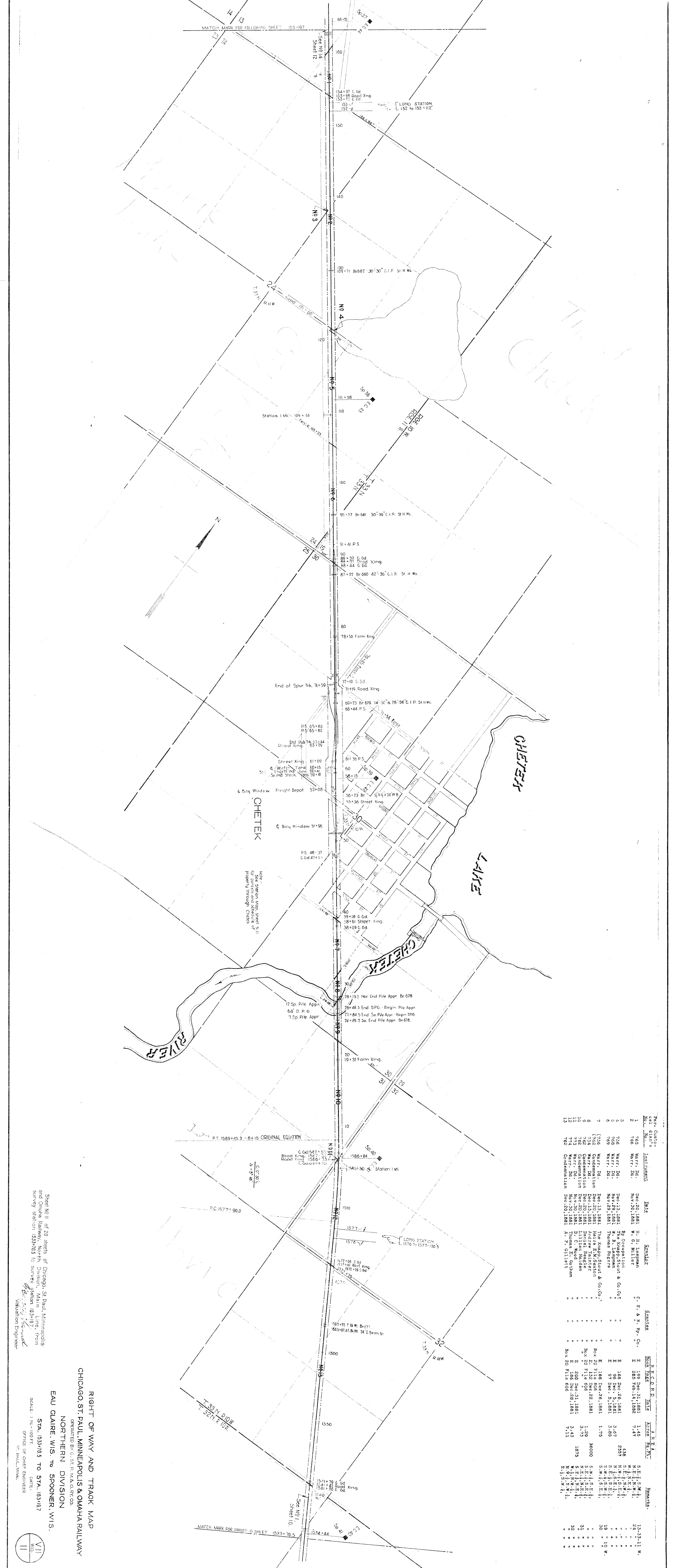
Part-Owner's Name	Acres	Testament	Date	Grantee	Enclosure	Book	Page	Area	Remarks
1	775	Warr. Dd.	Nov. 30, 1881	John Greaser	C. F. & R. Ry. Co.	E 135	Dec. 29, 1881	6.95	N. E. 1/4 Sec. 16, T. 33 N., R. 10 W.
2	776	"	"	"	"	E 150	Dec. 29, 1881	6.67	"
3	736	"	Dec. 13, 1881	Augustus Halden	"	E 168	Dec. 26, 1881	37000	"
4	1512	"	Apr. 21, 1883	The Knapp Stout & Co. Company	"	E 257	Dec. 26, 1883	2.44	"
5	778	"	Nov. 30, 1881	John Anderson	"	E 201	Dec. 26, 1881	17500	"
6	736	"	Dec. 13, 1881	The Knapp Stout & Co. Company	"	E 168	Dec. 26, 1881	4.58	"
7	779	"	Dec. 2, 1881	Chas. Weitha	"	E 188	Dec. 27, 1881	2.82	"
8	781	"	Dec. 13, 1881	The Knapp Stout & Co. Company	"	E 136	Dec. 29, 1881	2.99	"
9	779	Warr. Dd.	Dec. 2, 1881	Gilbert Thomson	"	Box 20	Dec. 27, 1881	5.06	"
10	782	Warr. Dd.	Dec. 20, 1881	Charles Oberst	"	E 182	Dec. 26, 1881	2.98	"
11	783	"	Nov. 30, 1881	Melvin H. Benson	"	E 169	Dec. 26, 1881	6.36	"
12	784	"	"	"	"	"	"	"	"
13	784	"	"	"	"	"	"	"	"

Sheet No. 10 of 20 sheets of Chicago, St. Paul, Minneapolis and Omaha Railway, North Division, Map No. 1323+42.5 to survey station 1530+70.5

RIGHT OF WAY AND TRACK MAP  
 CHICAGO, ST. PAUL, MINNEAPOLIS & OMAHA RAILWAY  
 NORTHERN DIVISION  
 EAU CLAIRE, WIS. TO SPOONER, WIS.

OPERATED BY C. ST. P. & O. RY. CO.  
 SCALE: 1 IN. = 100 FT.  
 OFFICE OF CHIEF ENGINEER  
 ST. PAUL, MINN.



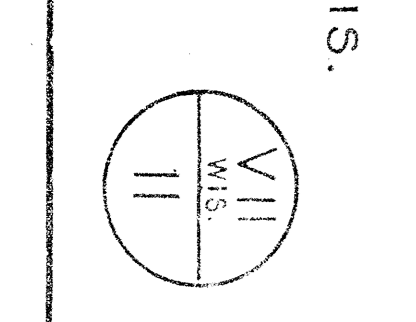


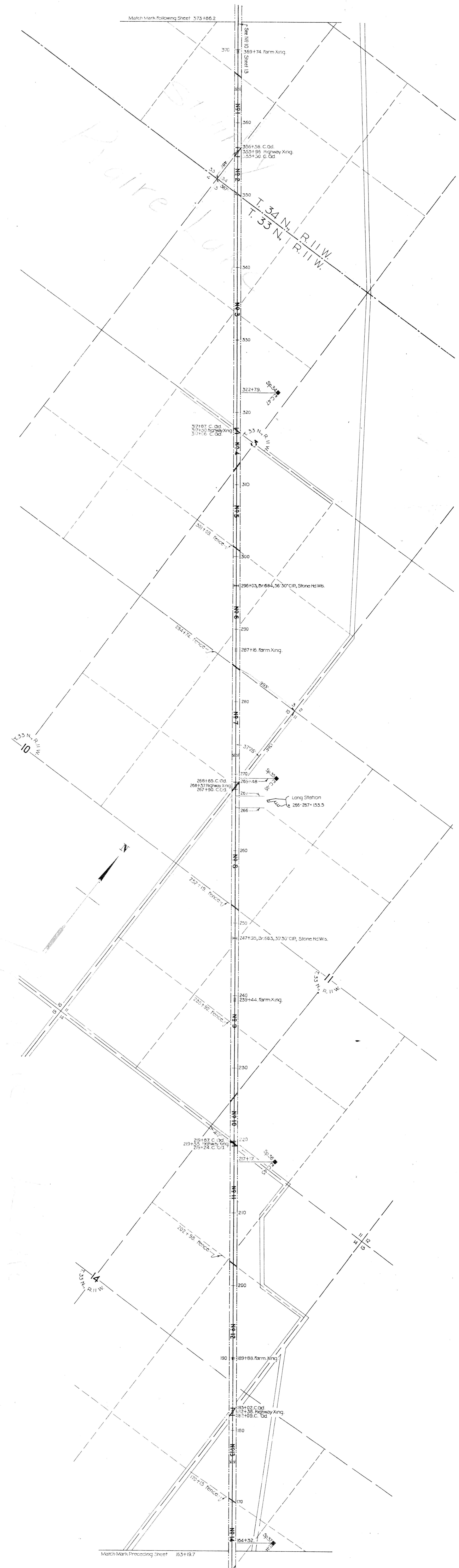
No.	Particulars	Date	Quantity	Rate	Amount	Remarks
1	Warr. Da.	Dec 20, 1881	H. H. Lammann	1.45	3.48	S.E. 1/4 W. 1/4
2	Warr. Da.	Nov 30, 1881	W. G. Miller	7.47	23.33	1/4 W. 1/4
3	Warr. Da.	Dec 13, 1881	By Occupation	3.67	10.00	S.E. 1/4 W. 1/4
4	Warr. Da.	Nov 29, 1881	W. H. Lammann	3.60	10.00	S.E. 1/4 W. 1/4
5	Warr. Da.	Nov 29, 1881	Thomas Rogers	1.75	5.00	S.W. 1/4 W. 1/4
6	Warr. Da.	Dec 13, 1881	The Knapp, Stout & Co. Co.	1.29	3.60	S.W. 1/4 W. 1/4
7	Warr. Da.	Dec 13, 1881	The Knapp, Stout & Co. Co.	3.43	10.00	S.W. 1/4 W. 1/4
8	Warr. Da.	Dec 20, 1881	Adrian Thayer	1.29	3.60	S.E. 1/4 W. 1/4
9	Warr. Da.	Dec 20, 1881	Daniel Beagle	3.75	10.00	S.E. 1/4 W. 1/4
10	Warr. Da.	Dec 20, 1881	William Hayden	3.43	10.00	S.E. 1/4 W. 1/4
11	Warr. Da.	Nov 30, 1881	Thomas E. Graham	7.11	20.00	S.E. 1/4 W. 1/4
12	Warr. Da.	Dec 20, 1881	A. P. Gillett	7.11	20.00	S.E. 1/4 W. 1/4
13	Warr. Da.	Dec 20, 1881	A. P. Gillett	7.11	20.00	S.E. 1/4 W. 1/4

Sheet No. II of 20 sheets of Chicago, St. Paul, Minneapolis and Omaha Railway, Northern Division, Main Line, from survey station 153+70.5 to Survey Station 153+197.

CHICAGO, ST. PAUL, MINNEAPOLIS & OMAHA RAILWAY  
 NORTHERN DIVISION  
 EAU CLAIRE, WIS. TO SPOONER, WIS.

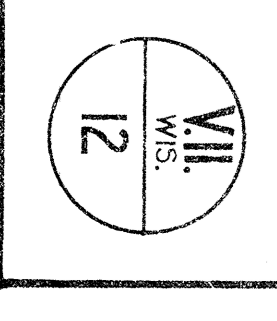
SCALE: 1 IN. = 100 FT.  
 OFFICE OF CHIEF ENGINEER  
 ST. PAUL, MINN.

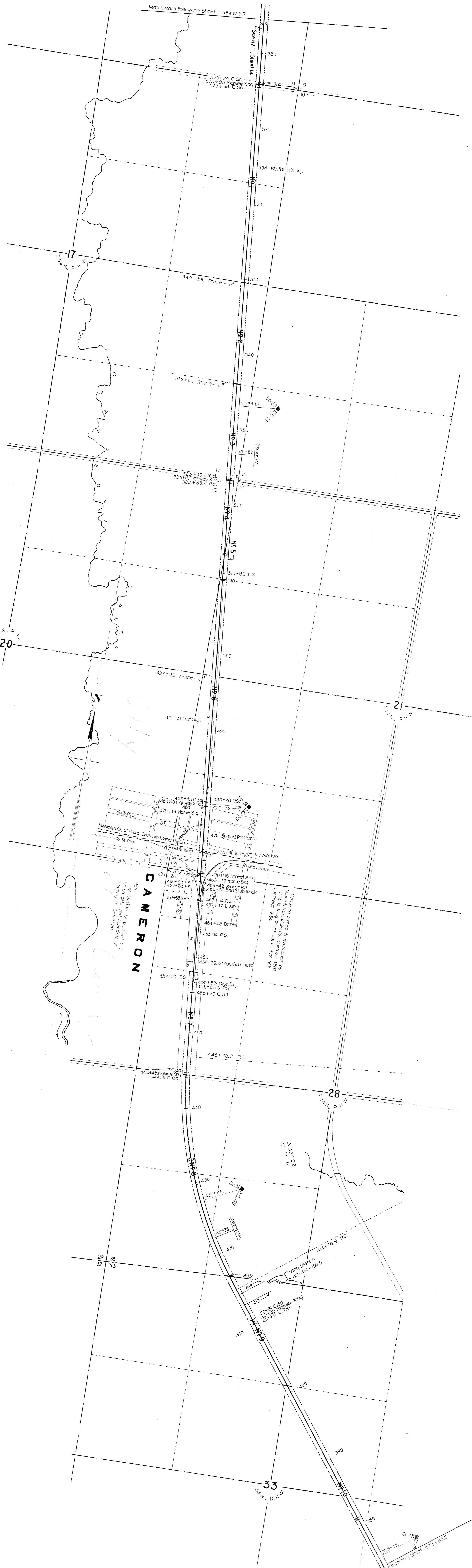




Sta.	Dist.	Part.	Owner	Acq. Date	Acq. Method	Remarks
1	650	Q. C. DA.	L. C. Stanley	Mar. 3, 1883	Condemnation	
2	654	Warr. DA.	Frederick Frankenberg	Nov. 30, 1881	Condemnation	
3	664	Warr. DA.	Walter W. De Haven	Nov. 4, 1881	Condemnation	
4	665	Warr. DA.	Mathias O. Linde	Oct. 4, 1886	Condemnation	
5	1315	Warr. DA.	John Wiseman	Aug. 1, 1882	Condemnation	
6	756	Q. C. DA.	John Wiseman	Aug. 1, 1882	Condemnation	
7	757	Warr. DA.	Stark Nielson	Nov. 30, 1881	Condemnation	
8	758	Warr. DA.	Stark Nielson	Nov. 30, 1881	Condemnation	
9	759	Warr. DA.	Stark Nielson	Nov. 30, 1881	Condemnation	
10	760	Warr. DA.	Stark Nielson	Nov. 30, 1881	Condemnation	
11	761	Warr. DA.	Stark Nielson	Nov. 30, 1881	Condemnation	
12	762	Warr. DA.	Ole Hanson	Dec. 20, 1881	Condemnation	
13	763	Warr. DA.	Thompson Olsen	Dec. 1, 1881	Condemnation	
14	764	Warr. DA.	Mary Sawyer	Dec. 1, 1881	Condemnation	

RIGHT OF WAY AND TRACK MAP  
 CHICAGO, ST. PAUL, MINNEAPOLIS & OMAHA RAILWAY  
 OPERATED BY C. ST. P. M. & O. ST. CO.  
 NORTHERN DIVISION  
 EAU CLAIRE, WIS. TO SPOONER, WIS.  
 STA. 183+19.7 TO STA. 373+86.2  
 DATE: \_\_\_\_\_  
 OFFICE OF CHIEF ENGINEER  
 ST. PAUL, MINN.  
 VALUATION ENGINEER



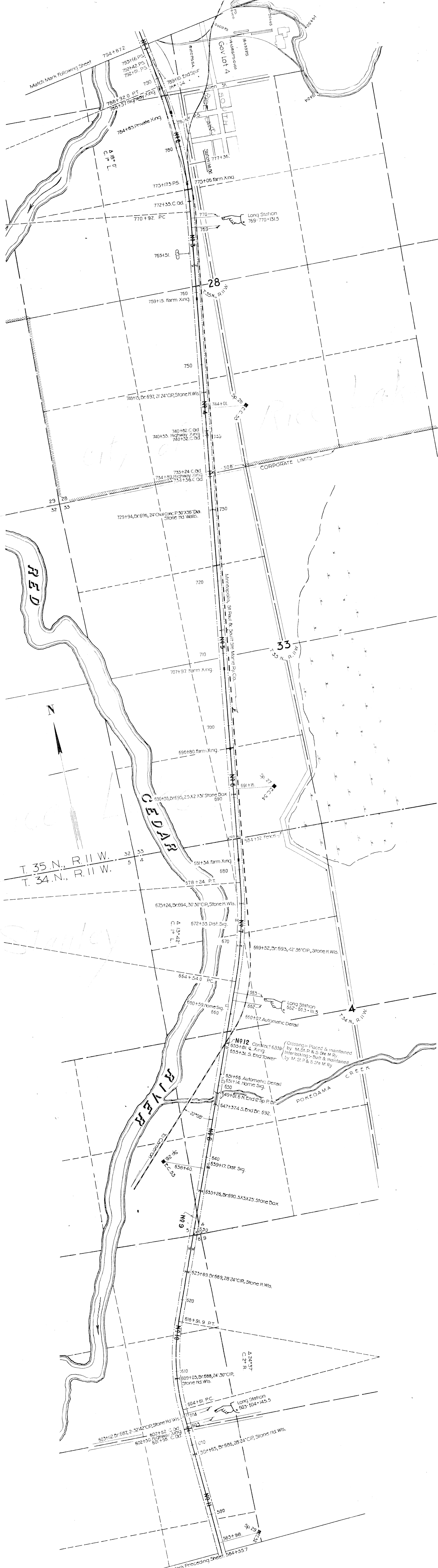


Dist. Station	Instrument	Date	Operator	Recorder	Book Page	Time	A.R.M.	Remarks
1	Warr. Dd.	Dec-21, 1881	George W. Hock	C. F. & N. Ry. Co.	191	Dec-29, 1881	6.11	E. H. N. E. 1
2	Warr. Dd.	Nov-4, 1881	G. O. Jorstad	"	194	Dec-30, 1881	3.04	E. H. N. E. 1
3	Warr. Dd.	Nov-4, 1881	C. St. P. M. & O. Ry. Co.	"	244	Nov-28, 1881	2.50	E. H. N. E. 1
4	Warr. Dd.	Nov-4, 1881	C. St. P. M. & O. Ry. Co.	"	44	Nov-12, 1881	3.00	E. H. N. E. 1
5	Warr. Dd.	Nov-4, 1881	Susan M. Wold	"	188	Dec-29, 1881	8.53	E. H. N. E. 1
6	Warr. Dd.	Nov-4, 1881	C. St. P. M. & O. Ry. Co.	"	44	Nov-12, 1881	3.13	E. H. N. E. 1
7	Warr. Dd.	Jan-13, 1884	N. M. Rockman	C. St. P. M. & O. Ry. Co.	117	Jan-28, 1884	6.37	E. H. N. E. 1
8	Warr. Dd.	Dec-24, 1881	L. C. Stanley	C. F. & N. Ry. Co.	223	Jan-7, 1882	3.77	E. H. N. E. 1
9	Q. C. Dd.	Mar-3, 1883	L. C. Stanley	"	F. 168	Mar-6, 1883	3.77	E. H. N. E. 1
10	Warr. Dd.	Dec-24, 1881	L. C. Stanley	"	E. 222	Jan-7, 1882	7.91	E. H. N. E. 1

RIGHT OF WAY AND TRACK MAP  
 CHICAGO, ST. PAUL, MINNEAPOLIS & OMAHA RAILWAY  
 OPERATED BY C. ST. P. M. & O. RY. CO.  
 NORTHERN DIVISION  
 EAU CLAIRE, WIS. TO SPOONER, WIS.

Sheet NO. 13 of 20 sheets of Chicago, St. Paul, Minneapolis and Omaha Railway, Northern Division, Station 584+55.7 to Survey Station 373+86.2 to survey.

SCALE: 1 IN. = 100 FT.  
 OFFICE OF CHIEF ENGINEER  
 ST. PAUL, MINN.

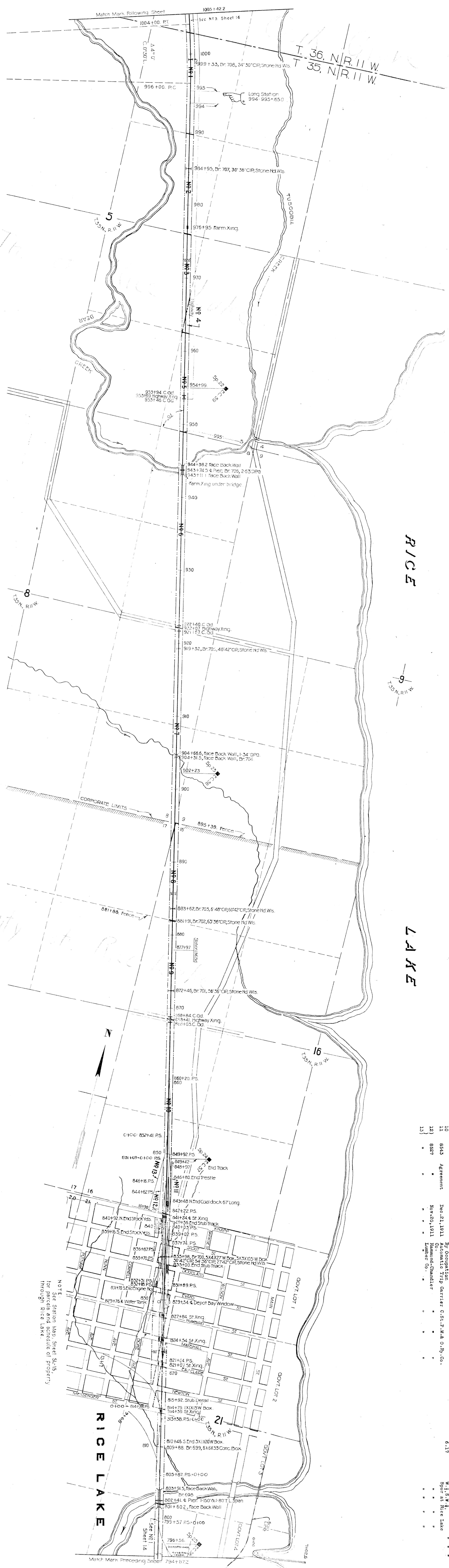


NOTE: Parcel No. 10 was Government land at date of construction.

Inst. No.	Date	Grantor	Grantee	Book	Page	Acres	Remarks
1	Apr. 24, 1883	C. S. P. & S. Ste. M. Ry. Co.	C. F. & N. Ry. Co.	F	214	3.34	9 E 1/4 S 1/4 T 35 N. R. 11 W.
2	Mar. 22, 1883	Andrew Tainter	"	F	132	3.08	9 E 1/4 S 1/4 T 35 N. R. 11 W.
3	Mar. 22, 1883	Peter Ahern	"	E	180	3.07	9 E 1/4 S 1/4 T 35 N. R. 11 W.
4	Mar. 22, 1883	Andrew Tainter	"	E	132	6.90	9 E 1/4 S 1/4 T 35 N. R. 11 W.
5	Mar. 22, 1883	The Knapp-Stour & Co. Co.	"	F	168	5.82	9 E 1/4 S 1/4 T 35 N. R. 11 W.
6	Mar. 22, 1883	Andrew Tainter	"	F	168	3.88	9 E 1/4 S 1/4 T 35 N. R. 11 W.
7	Mar. 22, 1883	Rudolph Rutenstein	"	E	152	3.88	9 E 1/4 S 1/4 T 35 N. R. 11 W.
8	Mar. 22, 1883	Thomas B. Wilson	"	E	178	5.84	9 E 1/4 S 1/4 T 35 N. R. 11 W.
9	Mar. 22, 1883	G. O. Barber	"	E	152	6.24	9 E 1/4 S 1/4 T 35 N. R. 11 W.
10	Mar. 22, 1883	The Knapp-Stour & Co. Co.	"	E	168	31000	9 E 1/4 S 1/4 T 35 N. R. 11 W.
11	Mar. 22, 1883	The Knapp-Stour & Co. Co.	"	E	168	6.06	9 E 1/4 S 1/4 T 35 N. R. 11 W.
12	Nov. 14, 1909	C. St. P. & S. Ste. M. Ry. Co.	Nice Lake, Duluth & Menominee Ry. Co.				Crossing Contract.

RIGHT OF WAY AND TRACK MAP  
 CHICAGO, ST. PAUL, MINNEAPOLIS & OMAHA RAILWAY  
 OPERATED BY C. ST. P. & S. STE. M. RY. CO.  
 NORTHERN DIVISION  
 EAU CLAIRE, WIS. TO SPOONER, WIS.

Sheet NO. 14 of 20 sheets of Chicago, St. Paul, Minneapolis and Omaha Railway, Northern Division, Main Line, from survey station 584+55.7 to survey station 794+87.2  
 SCALE: 1 IN. = 100 FT.  
 OFFICE OF CHIEF ENGINEER  
 ST. PAUL, MINN.  
 DATE: \_\_\_\_\_  
 VII  
 WIS.  
 14



RICE LAKE

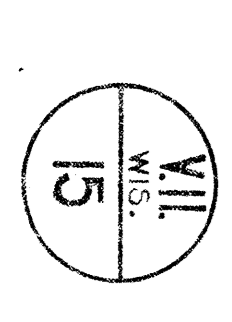
Part. No.	Order No.	Instrument	Date	Grantor	Grantee	R.C.D. No.	DATE	A.R.E. No.	Remarks
1	628	Q. C. D.A.	Apr 29, 1882	The Knapp Stout & Co. Company	C. F. & N. Ry. Co.	E	397 May 16, 1882	3.16	N.W. 1/4 Sec. 11, T. 36, N. R. 11 W.
2	629	Q. C. D.A.	"	"	"	E	397 "	3.16	S.W. 1/4 Sec. 11, T. 36, N. R. 11 W.
3	629	Q. C. D.A.	Feb. 1, 1883	C. S. P. M. & O. Ry. Co.	"	E	218 Nov. 31, 1883	2.56	N.W. 1/4 Sec. 11, T. 36, N. R. 11 W.
4	1115	Q. C. D.A.	Apr. 29, 1882	The Knapp Stout & Co. Company	"	E	397 May 16, 1882	2.56	N.W. 1/4 Sec. 11, T. 36, N. R. 11 W.
5	1811	Q. C. D.A.	Aug. 16, 1884	The Knapp Stout & Co. Company	"	H	288 Oct. 16, 1884	3.12	N.E. 1/4 Sec. 11, T. 36, N. R. 11 W.
6	1814	Q. C. D.A.	Nov. 5, 1883	Amble J. Scott	C. S. P. M. & O. Ry. Co.	E	593 Nov. 15, 1883	6.16	E. 1/2 Sec. 11, T. 36, N. R. 11 W.
7	628	Q. C. D.A.	Apr. 29, 1882	The Knapp Stout & Co. Company	"	E	397 May 16, 1882	6.32	N.W. 1/4 Sec. 11, T. 36, N. R. 11 W.
8	628	Q. C. D.A.	Feb. 2, 1883	By Occupation	C. F. & N. Ry. Co.	F	137 Feb. 12, 1883	2.92	S.W. 1/4 Sec. 11, T. 36, N. R. 11 W.
9	628	Q. C. D.A.	Dec. 21, 1811	By Occupation	C. S. P. M. & O. Ry. Co.	F	137 Feb. 12, 1883	6.17	S.W. 1/4 Sec. 11, T. 36, N. R. 11 W.
10	628	Q. C. D.A.	Nov. 20, 1911	Hammond Chandler	"	F	137 Feb. 12, 1883	6.17	S.W. 1/4 Sec. 11, T. 36, N. R. 11 W.
11	628	Q. C. D.A.	"	"	"	F	137 Feb. 12, 1883	6.17	S.W. 1/4 Sec. 11, T. 36, N. R. 11 W.
12	628	Q. C. D.A.	"	"	"	F	137 Feb. 12, 1883	6.17	S.W. 1/4 Sec. 11, T. 36, N. R. 11 W.
13	628	Q. C. D.A.	"	"	"	F	137 Feb. 12, 1883	6.17	S.W. 1/4 Sec. 11, T. 36, N. R. 11 W.

NOTE  
See Station Map, Sheet S.L. 15,  
for parcels and structure of property  
through Rice Lake.

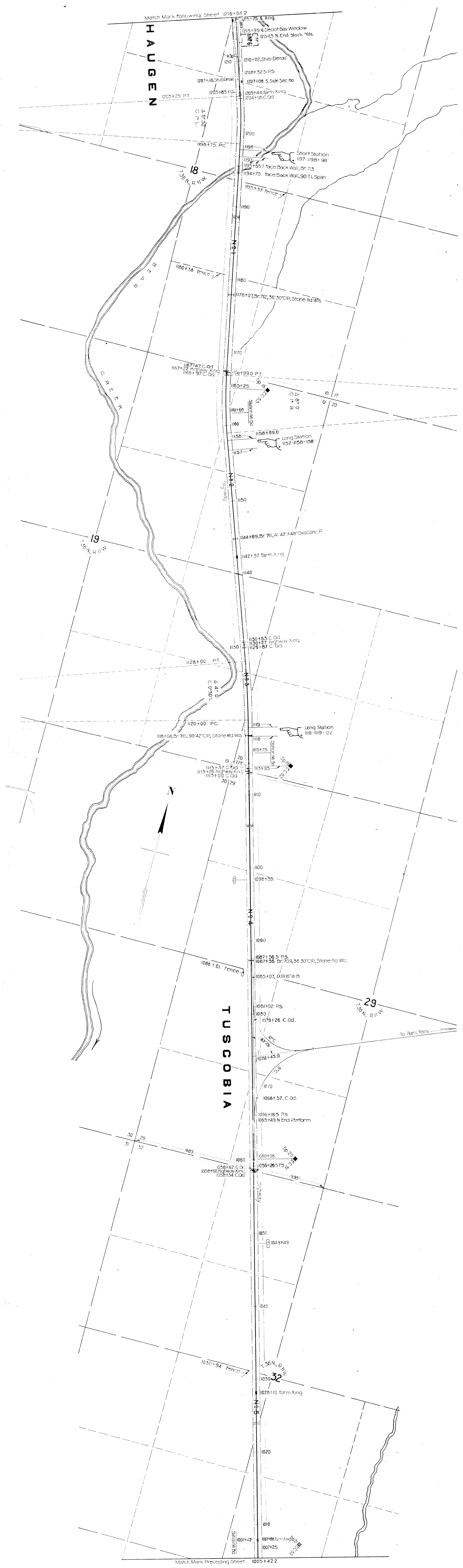
RIGHT OF WAY AND TRACK MAP  
CHICAGO, ST. PAUL, MINNEAPOLIS & OMAHA RAILWAY  
NORTHERN DIVISION  
EAU CLAIRE, WIS. TO SPOONER, WIS.

Sheet No. 16 of 20 sheets of Chicago, St. Paul, Minneapolis and Omaha Railway, Northern Division, Main Line, from survey station 7941872 to survey station 1005422.

SCALE: 1 IN. = 100 FT.  
DATE: \_\_\_\_\_  
OFFICE OF CHIEF ENGINEER  
ST. PAUL, MINN.



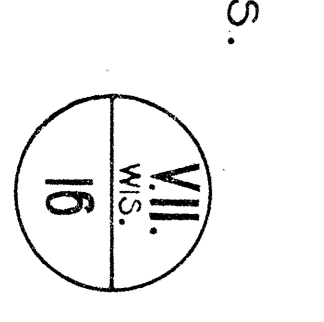


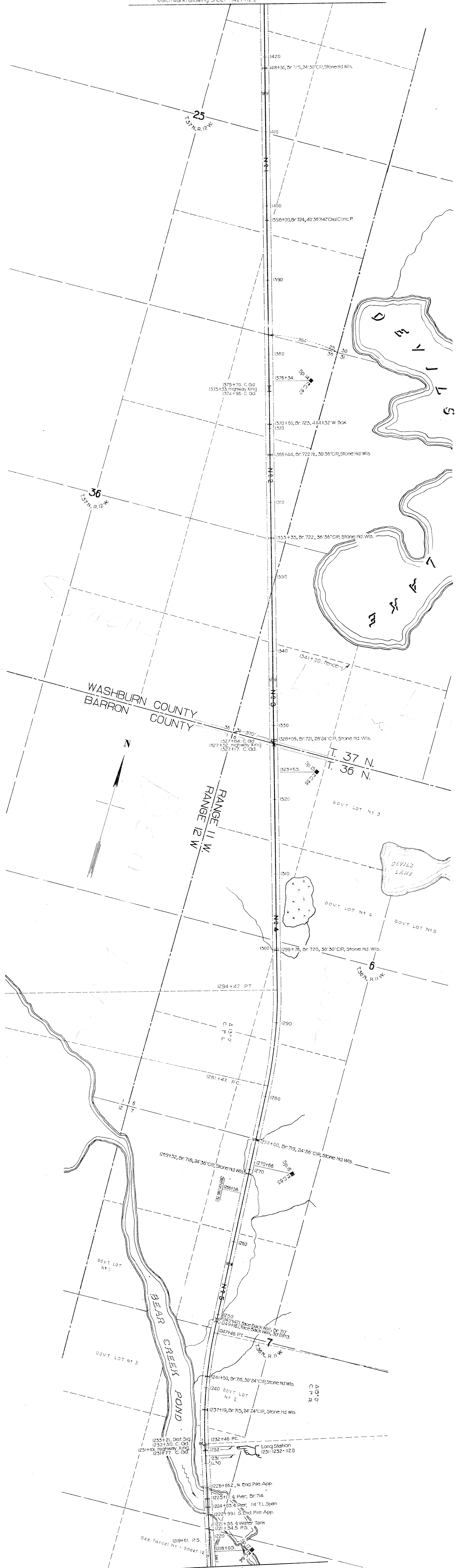


Particulars	Quantity	Unit	Value
1	625	Q. C. Dd.	Apr. 29, 1882
2	625	Warr. Dd.	Feb. 1, 1883
3	625	Q. C. Dd.	Apr. 29, 1882
4	625	Q. C. Dd.	Apr. 29, 1882
5	625	Q. C. Dd.	Apr. 29, 1882
6	1000	Warr. Dd.	June 3, 1871

RIGHT OF WAY AND TRACK MAP  
 CHICAGO, ST. PAUL, MINNEAPOLIS & OMAHA RAILWAY  
 NORTHERN DIVISION  
 EAU CLAIRE, WIS. TO SPOONER, WIS.

Sheet No. 16 of 20 sheets of Chicago, St. Paul, Minneapolis and Omaha Railway, Northern Division, Main Line, from survey station 1005+42.2 to survey station 1216+04.2  
 Valuation Engineer



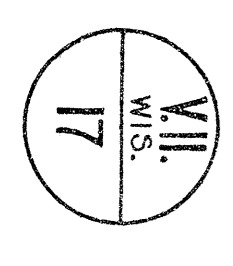


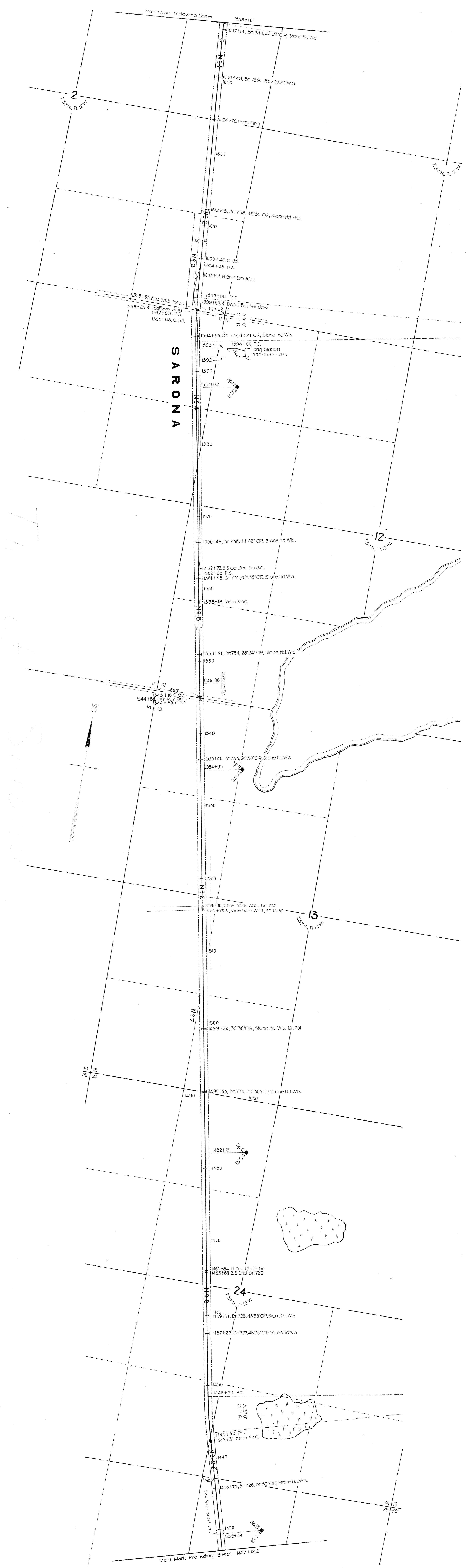
Par. Quant.	Inst. Date	Grantor	Grantee	Book Page	Book Page	Remarks
1	621	Q. C. D.	Sep 27, 1882	3	437	Feb. 7, 1883
2	622	Warr. Mt.	Nov 16, 1888	1	418	Nov 28, 1885
3	623	Q. C. D.	Sep 27, 1882	3	437	Feb. 7, 1883
4	624	Q. C. D.	Apr 29, 1882	E	397	May 14, 1882
5	1316	Q. C. D.	Feb 28, 1883	H	316	Dec 22, 1884

Sheet No 17 of 20 sheets of Chicago, St Paul, Minneapolis and Omaha Railway, North Division, Main Line, from survey station 1216+04.2 to survey station 1427+12.2

**RIGHT OF WAY AND TRACK MAP**  
**CHICAGO, ST. PAUL, MINNEAPOLIS & OMAHA RAILWAY**  
 NORTHERN DIVISION  
**EAU CLAIRE, WIS. TO SPOONER, WIS.**

SCALE: 1 IN. = 100 FT.  
 DATE: \_\_\_\_\_  
 OFFICE OF CHIEF ENGINEER  
 ST. PAUL, MINN.



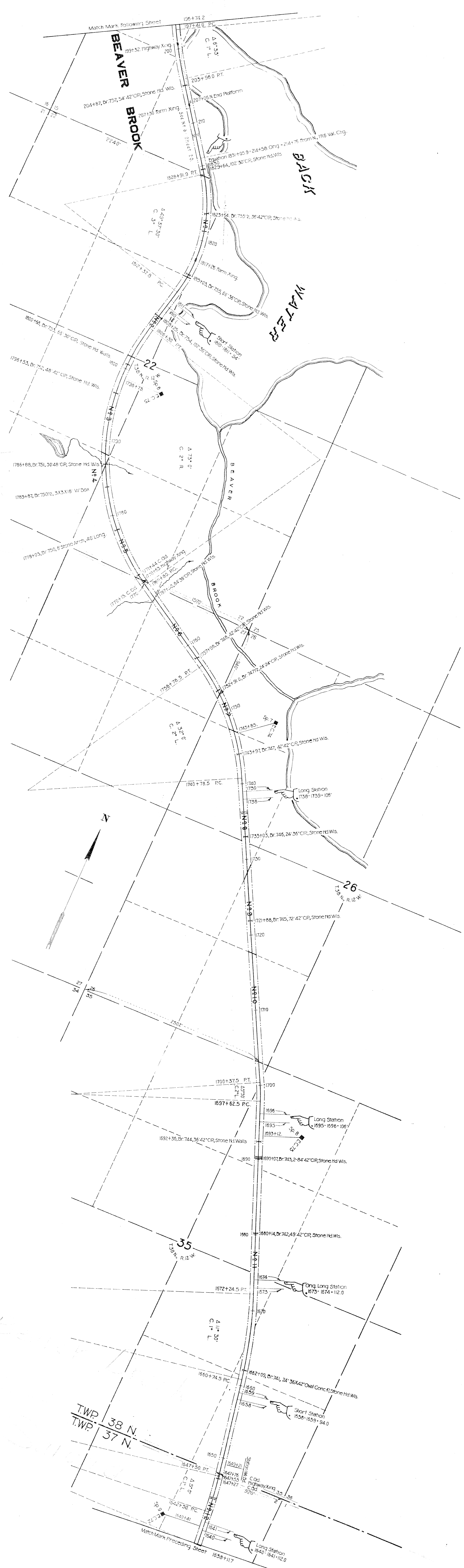


Per. Cus-tor-ial dist'ns	Inst'ment	Date	Grantor	Grantee	R. E. C. O. R. D. No.	Book Page	Acres	Remarks
1	Q. C. De.	Feb. 29, 1883	Shell Lake Lbr. Co.	C. F. & N. Ry. Co.	1	225 Dec. 22, 1884	3.06	S. E. 1/4 Sec. 12, T. 27 N., R. 12 W.
2	Q. C. De.	Dec. 2, 1900	Shell Lake Lbr. Co.	C. F. & N. Ry. Co.	19	123 Jan. 4, 1901	6.06	S. E. 1/4 Sec. 12, T. 27 N., R. 12 W.
3	Q. C. De.	Dec. 2, 1900	Shell Lake Lbr. Co.	C. F. & N. Ry. Co.	19	123 Jan. 4, 1901	6.06	S. E. 1/4 Sec. 12, T. 27 N., R. 12 W.
4	Q. C. De.	Dec. 2, 1900	Shell Lake Lbr. Co.	C. F. & N. Ry. Co.	19	123 Jan. 4, 1901	6.06	S. E. 1/4 Sec. 12, T. 27 N., R. 12 W.
5	Q. C. De.	Dec. 2, 1900	Shell Lake Lbr. Co.	C. F. & N. Ry. Co.	19	123 Jan. 4, 1901	6.06	S. E. 1/4 Sec. 12, T. 27 N., R. 12 W.
6	Q. C. De.	Dec. 2, 1900	Shell Lake Lbr. Co.	C. F. & N. Ry. Co.	19	123 Jan. 4, 1901	6.06	S. E. 1/4 Sec. 12, T. 27 N., R. 12 W.
7	Q. C. De.	Dec. 2, 1900	Shell Lake Lbr. Co.	C. F. & N. Ry. Co.	19	123 Jan. 4, 1901	6.06	S. E. 1/4 Sec. 12, T. 27 N., R. 12 W.
8	Q. C. De.	Dec. 2, 1900	Shell Lake Lbr. Co.	C. F. & N. Ry. Co.	19	123 Jan. 4, 1901	6.06	S. E. 1/4 Sec. 12, T. 27 N., R. 12 W.
9	Q. C. De.	Dec. 2, 1900	Shell Lake Lbr. Co.	C. F. & N. Ry. Co.	19	123 Jan. 4, 1901	6.06	S. E. 1/4 Sec. 12, T. 27 N., R. 12 W.

Sheet No. 18 of 20 sheets of Chicago, St. Paul, Minneapolis and Omaha Railway, North Division, Main Line, from Survey Station 1427+12.2 to survey station 1638+11.7

Valuation Engineer

RIGHT OF WAY AND TRACK MAP  
CHICAGO, ST. PAUL, MINNEAPOLIS & OMAHA RAILWAY  
OPERATED BY C. ST. P. M. & O. R. CO.  
NORTHERN DIVISION  
EAU CLAIRE, WIS. TO SPOONER, WIS.  
STA. 1427+12.2 TO STA. 1638+11.7  
SCALE: 1" = 100 FT.  
DATE: \_\_\_\_\_  
OFFICE OF CHIEF ENGINEER  
ST. PAUL, MINN.

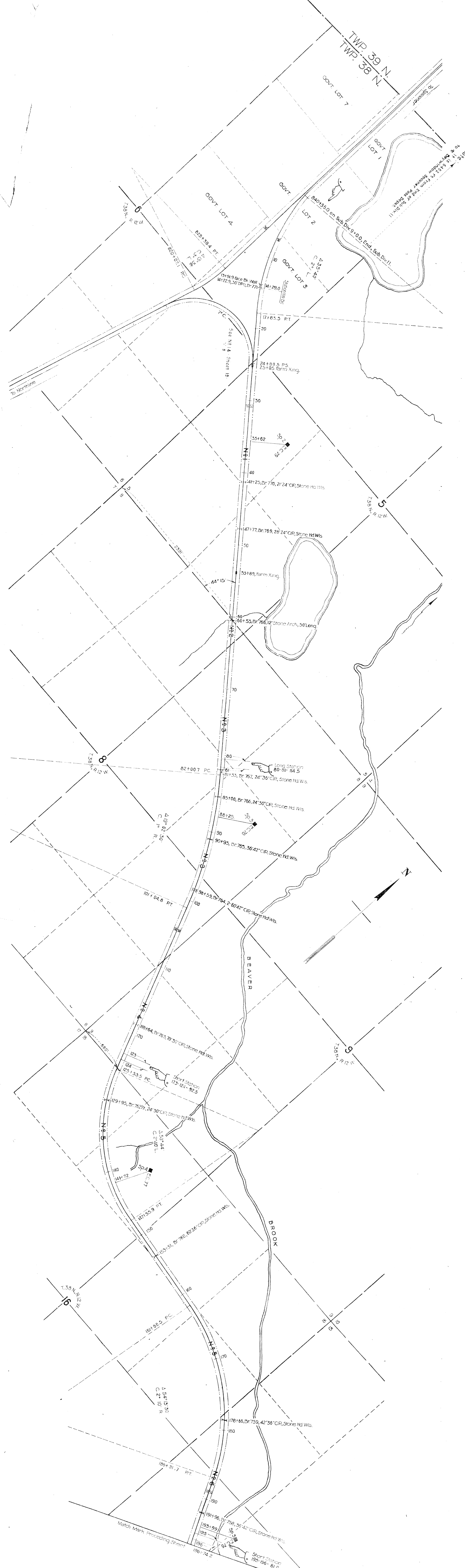


Post-Office	Dist.	Instrument	Date	Station	Remarks
1	634	Q. C. D.	Mar. 24, 1883	By Occupation	
2	634	Q. C. D.	Dec. 2, 1880	By Occupation	
3	634	Q. C. D.	Mar. 24, 1883	By Occupation	
4	634	Q. C. D.	Dec. 2, 1880	By Occupation	
5	634	Q. C. D.	Mar. 24, 1883	By Occupation	
6	634	Q. C. D.	Dec. 2, 1880	By Occupation	
7	634	Q. C. D.	Mar. 24, 1883	By Occupation	
8	634	Q. C. D.	Dec. 2, 1880	By Occupation	
9	634	Q. C. D.	Mar. 24, 1883	By Occupation	
10	634	Q. C. D.	Dec. 2, 1880	By Occupation	
11	634	Q. C. D.	Mar. 24, 1883	By Occupation	
12	634	Q. C. D.	Dec. 2, 1880	By Occupation	

Sheet No. 19 of 20 sheets of Chicago, St. Paul, Minneapolis and Omaha Railway, North Division, Main Line, from survey station 1638+117 to survey station 1971+41.2

CHICAGO, ST. PAUL, MINNEAPOLIS & OMAHA RAILWAY  
 NORTHERN DIVISION  
 EAU CLAIRE, WIS. TO SPOONER, WIS.  
 OPERATED BY C. ST. P. M. & O. RY. CO.  
 SCALE: 1 IN. = 100 FT.  
 DATE: 1907





Pat. Cont'd	Intervent	Date	Station	Grantee	Book Page	Date	A.R.A.	Remarks
1	C. C. Da.	SEP-4-1882	C. St. P. & O. Ry. Co.	C. F. & N. Ry. Co.	3	328	SEP-29-1882	6-23 35000
2	C. C. Da.	MAR-24-1883	John Comstock	at C. St. P. & O. Ry. Co.	3	327	MAR-30-1883	10-41
3	C. C. Da.	FEB-7-1883	Horace F. Hersey, et al	at C. St. P. & O. Ry. Co.	1	271	APR-4-1883	
4	C. C. Da.	SEP-4-1882	C. St. P. & O. Ry. Co.	C. F. & N. Ry. Co.	3	328	SEP-29-1882	3-73
5	C. C. Da.	FEB-28-1883	Shall Lake Lbr. Co.	at C. F. & N. Ry. Co.	1	225	DEC-21-1884	19-09

RIGHT OF WAY AND TRACK MAP  
 CHICAGO, ST. PAUL, MINNEAPOLIS & OMAHA RAILWAY  
 NORTHERN DIVISION  
 EAU CLAIRE, WIS. TO SPOONER, WIS.

Sheet No 20 of 20 sheets of Chicago, St. Paul, Minneapolis and Omaha Railway, North Division, Main Line, from survey station 196+74.2 to survey station 0+00.  
 STA. 196+74.2 TO STA. 0+00  
 SCALE: 1"=100 FT.  
 DATE: \_\_\_\_\_  
 OFFICE OF CHIEF ENGINEER  
 ST. PAUL, MINN.  
 Valuation Engineer

