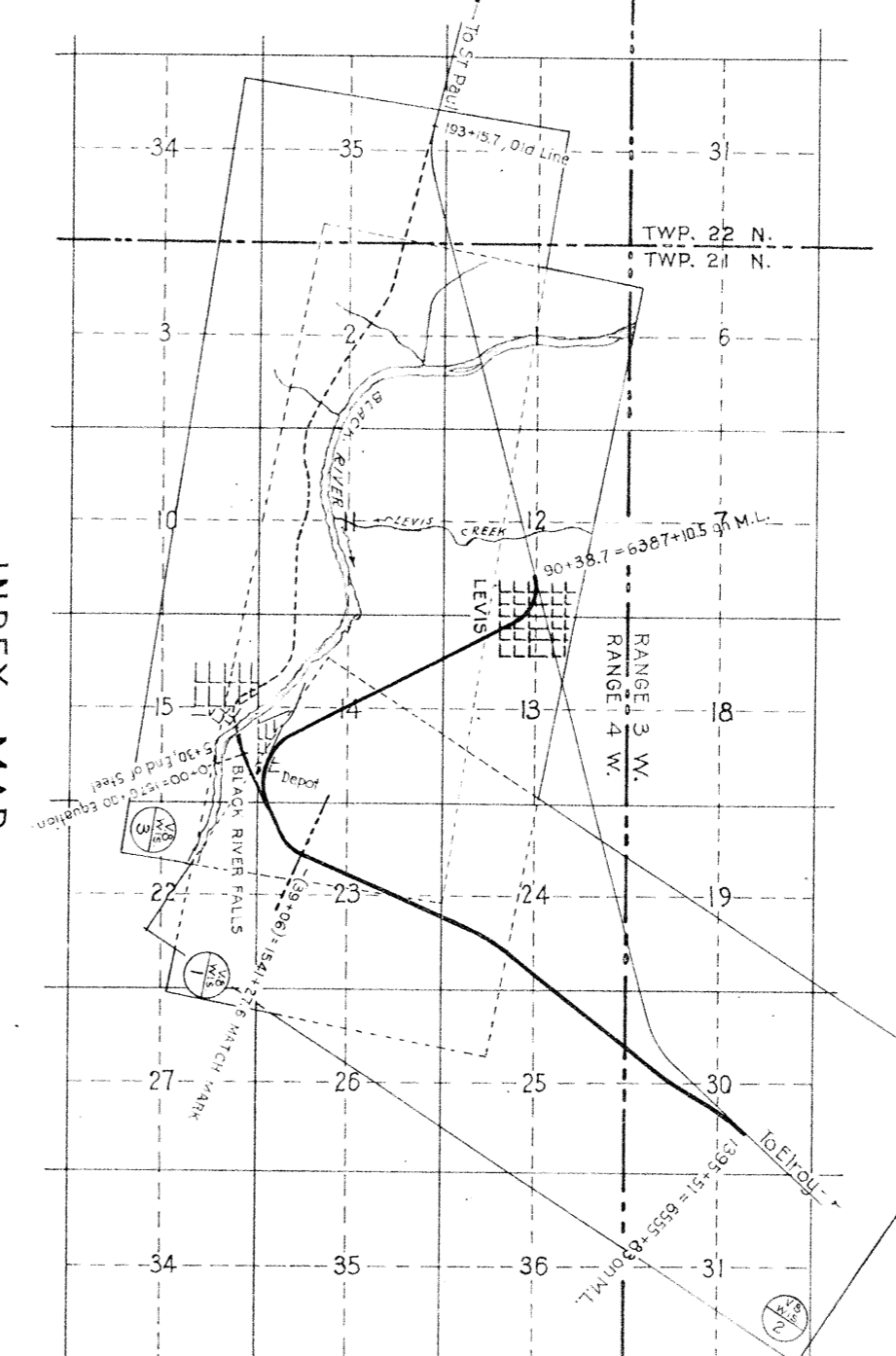


Area	Acres	Part-Owner	Instrument	Date	Grantor	Grantee	Record	Remarks
2442	1.26	1	8405 Warranty Deed	Dec-17-1910	E. J. Vandeventer Realty Co.	C. St. P. & M. & O. Ry. Co.	DB 744330, Mar 29, 1911	Part Bkks. 8-10-28, Vandeventer
1425	1.42	2	"	Dec-17-1910	"	"	DB 744350, Mar 29, 1911	Bkks. 21-32-50,
1.08	4	4	"	Dec-17-1910	"	"	DB 744353, Mar 29, 1911	In N.W. 1/4, Sec. 15, T. 21 N., R. 4 W.,
3750	1.08	5	Warranty Deed	Aug-18-1914	Jules Baccanaki	"	DB 914529, Sep 15, 1914	Ad. in
	6	915	Statement	Aug-19-1914	"	"	DB 914529, Sep 15, 1914, 1st Easement for ditch in N.W. 1/4, Sec. 15, T. 21 N., R. 4 W.	



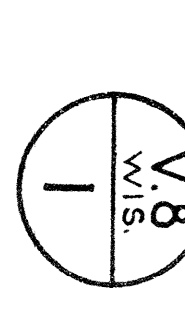
State of Minnesota,  
County of Ramsey,  
I, the undersigned, officer of the Chicago, St. Paul, Minneapolis and  
Omaha Railway Co. do hereby certify that this is a correct map, in a  
series of three primary sheets and one supplemental sheet  
of said railway, from survey station 304387 to survey station 1391-34  
Eastern Division, Bivivialis Line, State of Wisconsin  
from the records of said company.

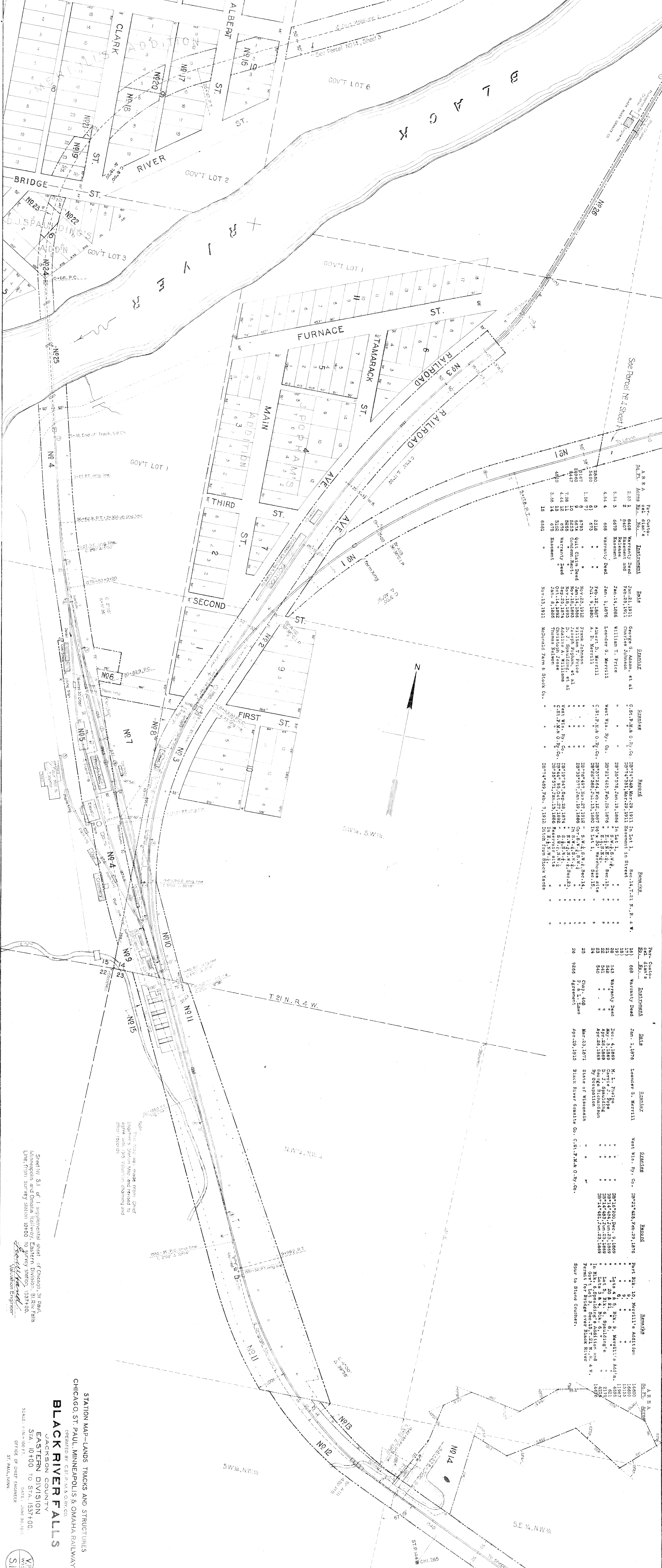
Corrected: *Walter J. ...*  
Valuation Engineer: *William ...*  
Chief Engineer: *William ...*

Subscribed and sworn to before me this 26th day of June 1917  
Notary public in and for the  
County of Ramsey,  
State of Minnesota.  
My commission expires June 26th, 1923.

RIGHT OF WAY AND TRACK MAP  
CHICAGO ST. PAUL MINNEAPOLIS AND OMAHA RAILWAY CO.  
LEVIS TO SHEPPARD  
EASTERN DIVISION  
OPERATED BY C. ST. P. & M. & O. RY. CO.  
STATION 304387 TO STATION 1541276  
SCALE: 1 IN. = 400 FT.

Office of Chief Engineer, St. Paul, Minn., June 30, 1917.

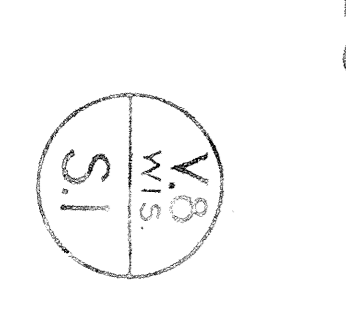


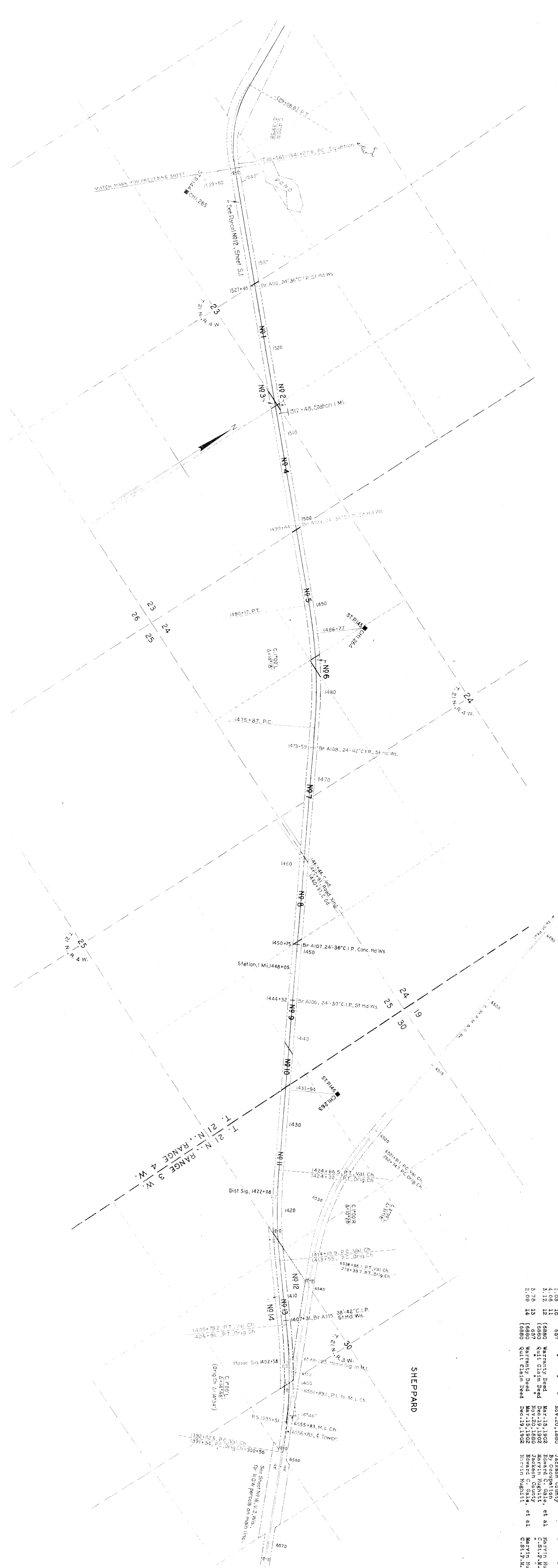


Part	Auto- cel. dist.	Instrument	Date	Grantor	Grantee	Record	Remarks	Part	Auto- cel. dist.	Instrument	Date	Grantor	Grantee	Record	Remarks
15	6831	Warranty Deed	Nov. 13, 1911	McDonald Farm & Stock Co.	"	Dp774469, Feb. 7, 1912	in Lot 1, Sec. 14, T. 21 N. R. 4 W.	15	6831	Warranty Deed	Nov. 13, 1911	McDonald Farm & Stock Co.	"	Dp774469, Feb. 7, 1912	in Lot 1, Sec. 14, T. 21 N. R. 4 W.
16	6831	Warranty Deed	Nov. 13, 1911	McDonald Farm & Stock Co.	"	Dp774469, Feb. 7, 1912	in Lot 1, Sec. 14, T. 21 N. R. 4 W.	16	6831	Warranty Deed	Nov. 13, 1911	McDonald Farm & Stock Co.	"	Dp774469, Feb. 7, 1912	in Lot 1, Sec. 14, T. 21 N. R. 4 W.
17	6831	Warranty Deed	Nov. 13, 1911	McDonald Farm & Stock Co.	"	Dp774469, Feb. 7, 1912	in Lot 1, Sec. 14, T. 21 N. R. 4 W.	17	6831	Warranty Deed	Nov. 13, 1911	McDonald Farm & Stock Co.	"	Dp774469, Feb. 7, 1912	in Lot 1, Sec. 14, T. 21 N. R. 4 W.
18	6831	Warranty Deed	Nov. 13, 1911	McDonald Farm & Stock Co.	"	Dp774469, Feb. 7, 1912	in Lot 1, Sec. 14, T. 21 N. R. 4 W.	18	6831	Warranty Deed	Nov. 13, 1911	McDonald Farm & Stock Co.	"	Dp774469, Feb. 7, 1912	in Lot 1, Sec. 14, T. 21 N. R. 4 W.
19	6831	Warranty Deed	Nov. 13, 1911	McDonald Farm & Stock Co.	"	Dp774469, Feb. 7, 1912	in Lot 1, Sec. 14, T. 21 N. R. 4 W.	19	6831	Warranty Deed	Nov. 13, 1911	McDonald Farm & Stock Co.	"	Dp774469, Feb. 7, 1912	in Lot 1, Sec. 14, T. 21 N. R. 4 W.
20	6831	Warranty Deed	Nov. 13, 1911	McDonald Farm & Stock Co.	"	Dp774469, Feb. 7, 1912	in Lot 1, Sec. 14, T. 21 N. R. 4 W.	20	6831	Warranty Deed	Nov. 13, 1911	McDonald Farm & Stock Co.	"	Dp774469, Feb. 7, 1912	in Lot 1, Sec. 14, T. 21 N. R. 4 W.
21	6831	Warranty Deed	Nov. 13, 1911	McDonald Farm & Stock Co.	"	Dp774469, Feb. 7, 1912	in Lot 1, Sec. 14, T. 21 N. R. 4 W.	21	6831	Warranty Deed	Nov. 13, 1911	McDonald Farm & Stock Co.	"	Dp774469, Feb. 7, 1912	in Lot 1, Sec. 14, T. 21 N. R. 4 W.
22	6831	Warranty Deed	Nov. 13, 1911	McDonald Farm & Stock Co.	"	Dp774469, Feb. 7, 1912	in Lot 1, Sec. 14, T. 21 N. R. 4 W.	22	6831	Warranty Deed	Nov. 13, 1911	McDonald Farm & Stock Co.	"	Dp774469, Feb. 7, 1912	in Lot 1, Sec. 14, T. 21 N. R. 4 W.
23	6831	Warranty Deed	Nov. 13, 1911	McDonald Farm & Stock Co.	"	Dp774469, Feb. 7, 1912	in Lot 1, Sec. 14, T. 21 N. R. 4 W.	23	6831	Warranty Deed	Nov. 13, 1911	McDonald Farm & Stock Co.	"	Dp774469, Feb. 7, 1912	in Lot 1, Sec. 14, T. 21 N. R. 4 W.
24	6831	Warranty Deed	Nov. 13, 1911	McDonald Farm & Stock Co.	"	Dp774469, Feb. 7, 1912	in Lot 1, Sec. 14, T. 21 N. R. 4 W.	24	6831	Warranty Deed	Nov. 13, 1911	McDonald Farm & Stock Co.	"	Dp774469, Feb. 7, 1912	in Lot 1, Sec. 14, T. 21 N. R. 4 W.
25	6831	Warranty Deed	Nov. 13, 1911	McDonald Farm & Stock Co.	"	Dp774469, Feb. 7, 1912	in Lot 1, Sec. 14, T. 21 N. R. 4 W.	25	6831	Warranty Deed	Nov. 13, 1911	McDonald Farm & Stock Co.	"	Dp774469, Feb. 7, 1912	in Lot 1, Sec. 14, T. 21 N. R. 4 W.
26	6831	Warranty Deed	Nov. 13, 1911	McDonald Farm & Stock Co.	"	Dp774469, Feb. 7, 1912	in Lot 1, Sec. 14, T. 21 N. R. 4 W.	26	6831	Warranty Deed	Nov. 13, 1911	McDonald Farm & Stock Co.	"	Dp774469, Feb. 7, 1912	in Lot 1, Sec. 14, T. 21 N. R. 4 W.

STATION MAP—LANDS TRACKS AND STRUCTURES  
 CHICAGO ST. PAUL, MINNEAPOLIS & OMAHA RAILWAY  
 OPERATED BY C. ST. P. M. & O. RY. CO.  
**BLACK RIVER FALLS**  
 JACKSON COUNTY  
 EASTERN DIVISION  
 STA. 10+00 TO STA. 1537+00.  
 SCALE: 1"=100 FT.  
 DATE: JUNE 30, 1917.  
 OFFICE OF CHIEF ENGINEER  
 ST. PAUL, MINN.

Sheet No. 51 of 1 supplemental sheet of Chicago, St. Paul, Minneapolis and Omaha Railway, Eastern Division, Black River Falls Line, from survey station 10+00.



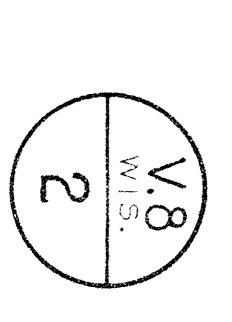


Sta. Pt.	Area	No.	Acres	Part - Contro- col diam's	Settlem't	Date	Benefit	Remarks	Remarks
1050	3.10	1	678	Warranty Deed	Sep-24-1874	Eliza Barber	Warr. Ws. By Co. Imp'g 150 Sep. 26, 1874	In S.W. 1/4, N.E. 1/4, Sec. 23, T. 21 N., R. 4 W.	
7400	1.05	2	630	Certificate	Dec-11-1882	State of Wisconsin	C.S.P. M.K. O.Ry. Co. Imp'g 150 Dec. 4, 1880	Cont. S.W. 1/4, N.E. 1/4, Sec. 23, T. 21 N., R. 4 W.	
540	3.40	3	686	Quit. Ogm. Deed	Jul-29-1880	John C. Spomer	Imp'g 150 Jul. 31, 1880	In N.W. 1/4, S.W. 1/4, Sec. 24, T. 21 N., R. 4 W.	
18375	4.87	4	658	"	Jul-29-1880	John C. Spomer	Imp'g 150 Jul. 31, 1880	In S.W. 1/4, S.W. 1/4, Sec. 24, T. 21 N., R. 4 W.	
	2.25	5	678	"	"	State of Wisconsin	Warr. Ws. By Co. Imp'g 150 Sep. 26, 1874	In S.W. 1/4, N.E. 1/4, Sec. 23, T. 21 N., R. 4 W.	
	1.05	6	630	Warranty Deed	Apr-13-1916	J. B. Hall	C.S.P. M.K. O.Ry. Co. Imp'g 150 Apr. 19, 1916	In S.W. 1/4, N.E. 1/4, Sec. 23, T. 21 N., R. 4 W.	
	4.06	7	658	Quit. Ogm. Deed	Nov-20-1880	Jackson County	Imp'g 150 Nov. 20, 1880	In N.W. 1/4, S.W. 1/4, Sec. 24, T. 21 N., R. 4 W.	
	3.12	8	680	Warranty Deed	Mar-19-1902	Edward C. Gale, et al	Imp'g 150 Mar. 19, 1902	In S.W. 1/4, S.W. 1/4, Sec. 24, T. 21 N., R. 3 W.	
	5.76	9	657	Quit. Ogm. Deed	Nov-20-1880	Jackson County	Imp'g 150 Nov. 20, 1880	In S.W. 1/4, S.W. 1/4, Sec. 24, T. 21 N., R. 3 W.	
	2.08	10	680	Warranty Deed	Mar-15-1902	Edward C. Gale, et al	Imp'g 150 Mar. 15, 1902	In S.W. 1/4, S.W. 1/4, Sec. 24, T. 21 N., R. 3 W.	
		11	680	Quit. Ogm. Deed	Dec-19-1902	Marvin Huggitt	C.S.P. M.K. O.Ry. Co. Imp'g 150 Dec. 27, 1902	Adj. N.W. 1/4, S.W. 1/4, Sec. 24, T. 21 N., R. 3 W.	

Sheet No. 2 of 3 sheets of Chicago, St. Paul, Minneapolis and Omaha Railway Eastern Division, Riverview Line, from survey station 154127.6 to station 139113.4.

RIGHT OF WAY AND TRACK MAP  
CHICAGO ST. PAUL, MINNEAPOLIS AND OMAHA RAILWAY CO.  
EASTERN DIVISION  
OPERATED BY C. ST. P. & O. RY. CO.  
LEWIS TO SHEPPARD  
STATION 154127.6 TO STATION 139113.4.

SCALE, 1 IN. = 400 FT.  
OFFICE OF CHIEF ENGINEER, ST. PAUL, MINN., JUNE 30, 1917.





AREA	Acres	Part	Case	Instrument	Date	Grantor	Grantee	Record	Remarks
4.82	1	696	Quit Claim	Deed	Jan. 1, 1876	Isander J. Merrill	West Wis. Ry. Co.	DP-21-627, Feb. 29, 1876	In E. & S. E. 1/4 Sec. 25, T. 22 N., R. 4 W.
2.01	2	635	Warranty	Deed	Sep. 23, 1874	By Occupation	"	DP-13-549, Sep. 28, 1874	"
1.84	4	635	Warranty	Deed	"	By Occupation	"	"	"
1.88	5	(635)	Quit Claim	Deed	Jan. 1, 1876	Jessie G. Merrill	"	DP-21-627, Feb. 29, 1876	"
3.08	6	(635)	Quit Claim	Deed	Jan. 1, 1876	Jessie G. Merrill	"	"	"
2.46	7	(635)	Quit Claim	Deed	Jan. 1, 1876	Jessie G. Merrill	"	"	"
2.42	8	(635)	Quit Claim	Deed	Jan. 1, 1876	Jessie G. Merrill	"	"	"
4.28	10	(635)	Quit Claim	Deed	Jan. 1, 1876	Jessie G. Merrill	"	"	"
1.88	11	537	Warranty	Deed	May. 1, 1888	John Perry	West Wis. Ry. Co.	DP-14-978, Jun. 23, 1888	"
2.36	12	537	Warranty	Deed	May. 1, 1888	John Perry	West Wis. Ry. Co.	DP-14-978, Jun. 23, 1888	"
1.88	13	537	Warranty	Deed	Nov. 17, 1889	By Occupation	"	DP-107-282, 7, 1889	"
8.64	14	539	"	"	"	"	"	"	"

Sheet No. 3 of 3 sheets of Chicago, St. Paul, Minneapolis and Omaha Railway Station Division, from Survey Station 133157 to Survey Station 133157.

RIGHT OF WAY AND TRACK MAP  
 CHICAGO, ST. PAUL, MINNEAPOLIS AND OMAHA RAILWAY CO.  
 EASTERN DIVISION  
 LEVINS TO SHEPPARD  
 OPERATED BY C. ST. P. M. & O. R. R. CO.  
 STATION 133157 TO STATION 0400.  
 SCALE: 1 IN. = 400 FT.  
 OFFICE OF CHIEF ENGINEER, ST. PAUL, MINN., JUNE 30, 1917.

