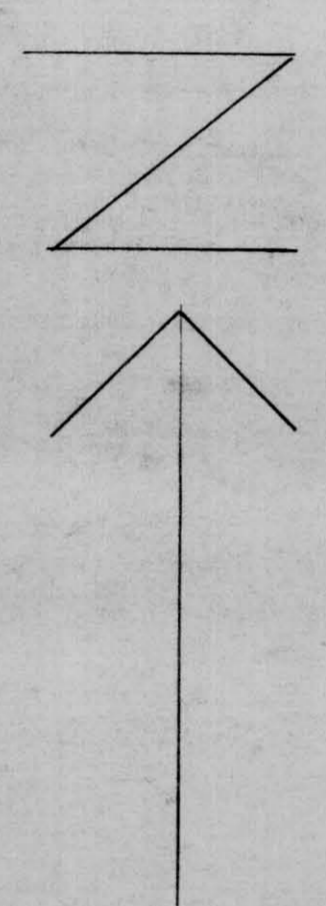
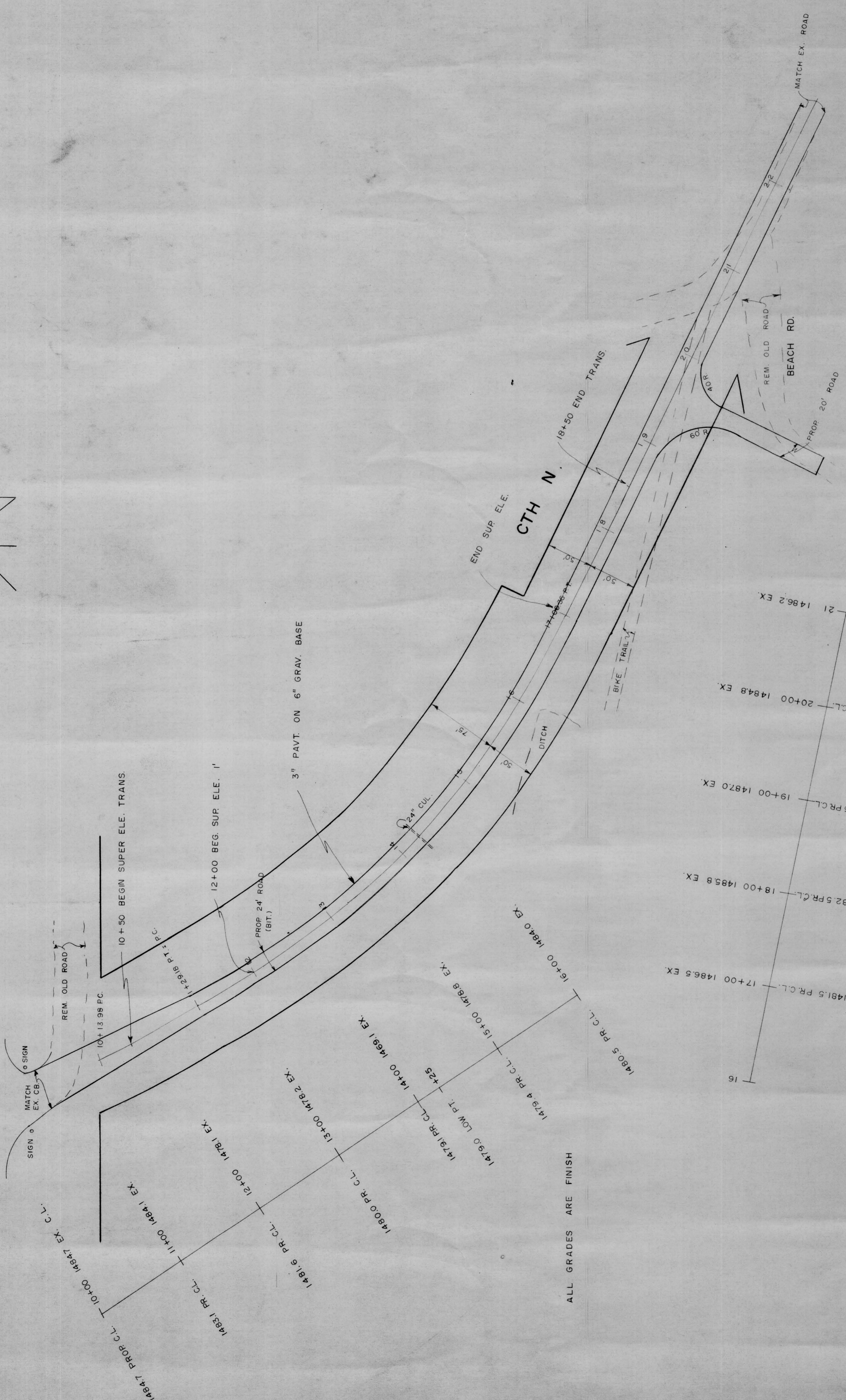


JERRY



STH 51



ALL GRADES ARE FINISH

TITLE	CTH N RELOCATION	DRAWING NO.	
LINCOLN COUNTY	STATE OF WISCONSIN	REVISED	
STH 51 TO 1200' EAST	DRAWN FOR LINCOLN CO. HIGHWAY DEPT.	DATE	5-92
	DRAWN BY	APPROVED BY	
	SCALE	1" = 50'	FILE BOOK NO.
	FILE NO.		