

INDEX OF SHEETS

- SHEET NO. 1 TITLE
- SHEET NO. 2 TYPICAL CROSS SECTIONS
- SHEET NO. 2 ESTIMATE OF QUANTITIES
- SHEET NO. 2A MISCELLANEOUS QUANTITIES
- SHEET NO. — RIGHT OF WAY PLAT
- SHEET NO. 3-7 PLAN AND PROFILE STA. 10+15 TO STA. 149+98
- SHEET NO. 8-11 STANDARD DETAILS
- SHEET NO. 12-13 CROSS SECTIONS
- SHEET NO. 14-21 I. B. M. COMPUTATIONS



STATE OF WISCONSIN
STATE HIGHWAY COMMISSION OF WISCONSIN

PLAN AND PROFILE OF PROPOSED
S.T.H. 107-IRMA ROAD
C.T.H. "J"
LINCOLN COUNTY
PROJECT S0570(6)

COUNTY AND HIGHWAY	ROUTE AND SECTION	CLASS AND AGREEMENT		S.P.A. REGION DIVISION	SHEET NUMBER	TOTAL SHEETS
		STATE	FEDERAL			
35.6	570.0		11.6	4 WIS.	1	21

PLAN 1 IN. = 100 FT.
PROFILE HOR. 1 IN. = 100 FT. VERT. 1 IN. = 10 FT.
CROSS SECTIONS HOR. 1 IN. = 5 FT. VERT. 1 IN. = 5 FT.

APPROVED FOR LINCOLN COUNTY

Francis X Fox

5-2-60 CO. HIGHWAY COMMISSIONER
Date Title



END OF PROJ. S0570(6)
STA. 149+98
489.5 E OF SEC. COR.
SEC. 12, 13 T 33N R 6E
AND SEC. 7, 18 T 33N R 7E

BEGIN PROJ. S0570(6)
STA. 10+15
150' W. OF THE S 1/4 COR. OF
SEC. 10 T 33N R 6E

CONVENTIONAL SIGNS

- | | |
|---|--|
| <p>STATE LINE.....</p> <p>COUNTY LINE.....</p> <p>TOWNSHIP OR RANGE LINE.....</p> <p>SECTION LINE.....</p> <p>NEW RIGHT OF WAY LINE.....</p> <p>PRESENT RIGHT OF WAY LINE.....</p> <p>WIRE FENCE { WOVEN.....
 BARBED.....</p> <p>LOT LINE.....</p> <p>CORPORATE OR CITY LIMITS.....</p> <p>PROPERTY LINE.....</p> <p>TRAVELED WAY OR P.E.....</p> <p>RAILROADS.....</p> <p>BASE OR SURVEY LINE.....</p> | <p>CULVERTS IN PLACE.....</p> <p>CULVERTS REQUIRED.....</p> <p>DROP INLET.....</p> <p>POWER POLE.....</p> <p>TELEPHONE OR TELEGRAPH POLE.....</p> <p>RIGHT OF WAY MARKERS.....</p> <p>REFERENCE STAKE FOR HUBS ONLY.....</p> <p>MARSH.....</p> <p>HEDGE.....</p> <p>TREES.....</p> <p>GROUND ELEVATION..... DATUM LINE 73.9</p> <p>GRADE ELEVATION..... DATUM LINE 75.16</p> |
|---|--|

LAYOUT

SCALE 1 MILE

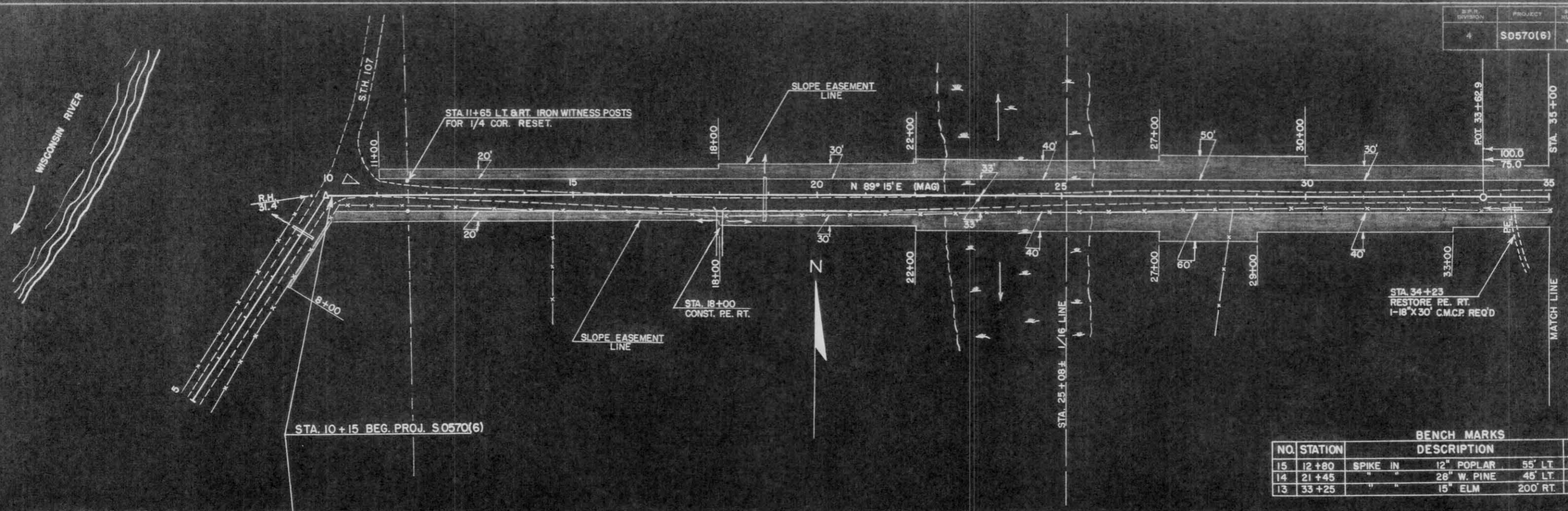
TOTAL NET LENGTH OF CENTERLINE = 2.648 MI.

STATE HIGHWAY COMMISSION OF WISCONSIN MADISON, WIS.	
SURVEYOR..... J.B.	NOTE BOOK..... I.B.M.
DIVISION COMPUTER..... J.B.	M. D. CHECKER.....
DISTRICT CHECKER..... H.G.	CORRECT.....
CORRECT:	
DATE 4/11/60	<i>Max Jettle</i> DISTRICT ENGINEER
RECOMMENDED FOR APPROVAL:	
DATE 4/17/60	<i>J. J. Pille</i> ENGINEER
APPROVED:	
DATE 4/22/60	<i>E. C. Ruckman</i> STATE HIGHWAY ENGINEER
DEPARTMENT OF COMMERCE BUREAU OF PUBLIC ROADS	
APPROVED:	DATE
DIVISION ENGINEER	

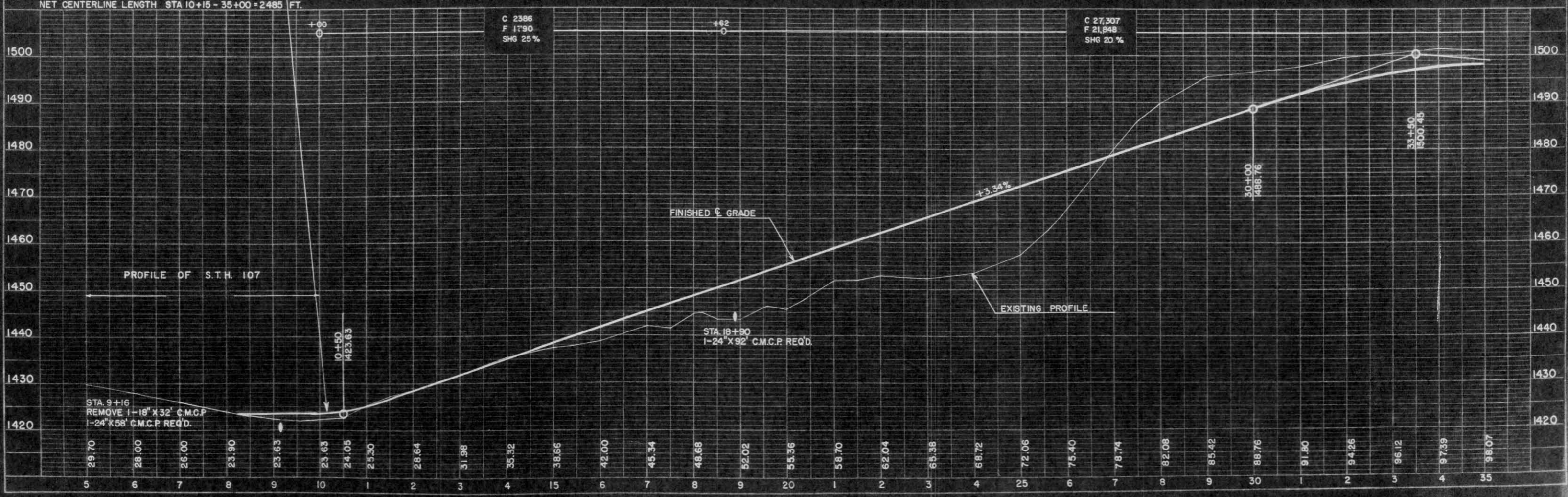
S 0570(6)

DATE: 8-99
 BY: J. BERGACKER
 SURVEYED: 8-99
 NOTE BOOK: ALIGNED CHECKED
 PLAN: 1-30
 RT. OF WAY CHECKED: P.J.H.
 NO. 2-4-6

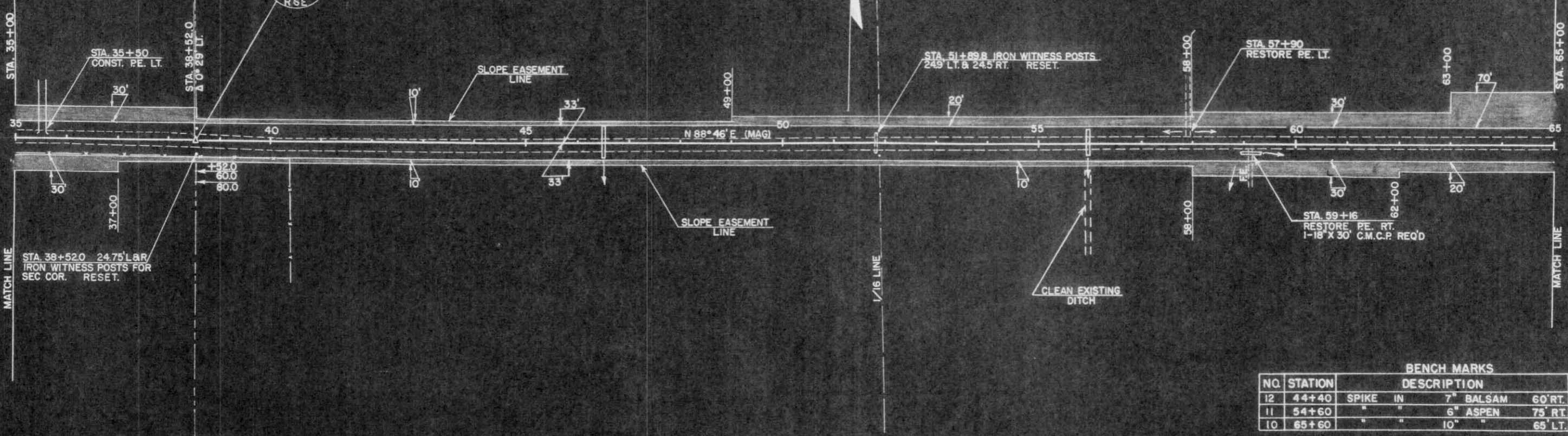
DATE: 8-99
 BY: J. BERGACKER
 SURVEYED: 8-99
 NOTE BOOK: ALIGNED CHECKED
 PROFILE: 1-30
 RT. OF WAY CHECKED: P.J.H.
 NO. 2-4-6



NO.	STATION	DESCRIPTION	ELEV.
15	12+80	SPIKE IN 12" POPLAR 55' LT.	1430.29
14	21+45	" " 28" W. PINE 45' LT.	1452.95
13	33+25	" " 15" ELM 200' RT.	1493.95



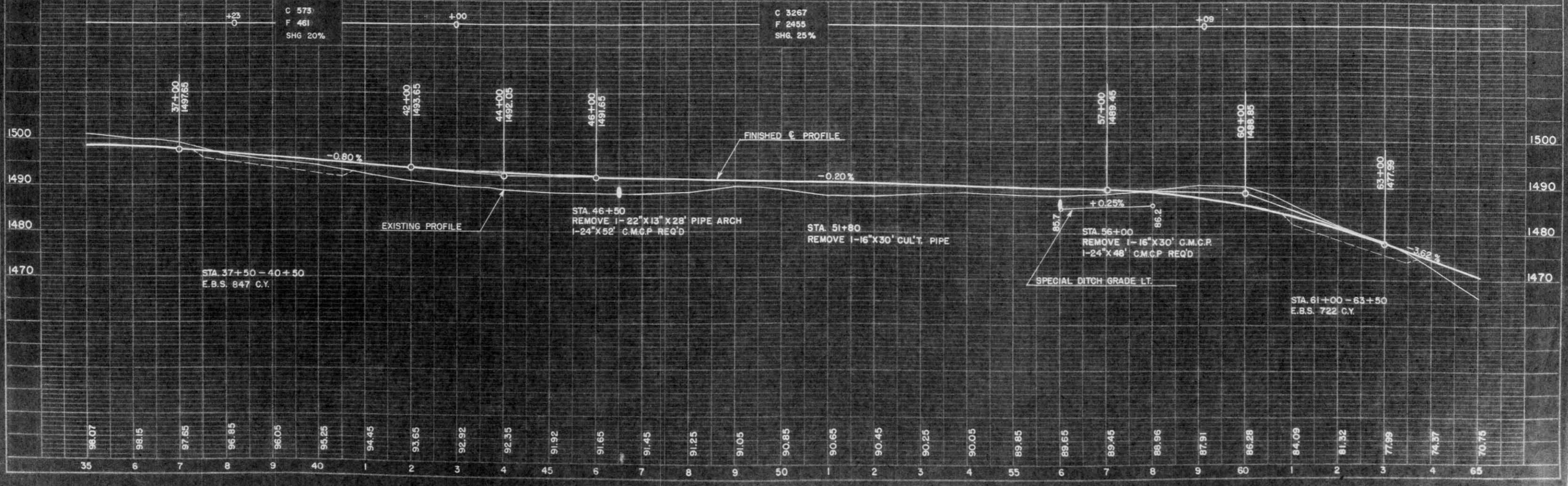
F.P.R. DIVISION	PROJECT	SHEET NUMBER	TOTAL SHEETS
4	S0570(6)	4	21



BENCH MARKS

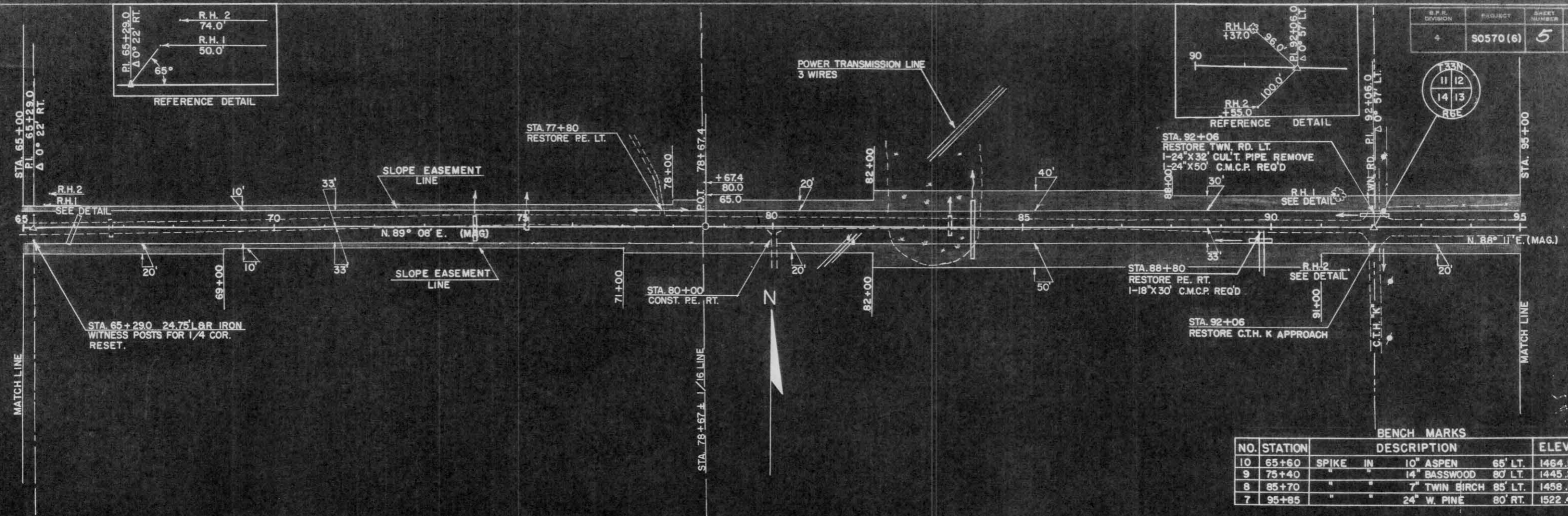
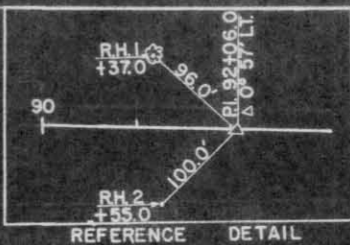
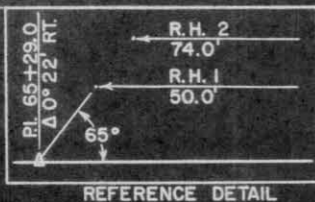
NO.	STATION	DESCRIPTION	ELEV.
12	44+40	SPIKE IN 7" BALSAM 60' RT.	1488.23
11	54+60	" " 6" ASPEN 75' RT.	1487.41
10	65+60	" " 10" " 65' LT.	1464.50

NET CENTERLINE LENGTH STA. 35+00 - 65+00 = 3000 FT.



DATE: 5-58
SCALE: 1"=60'
DRAWN BY: J. BERGACKER
CHECKED BY: P. J. H.
PROJECT: S0570(6)

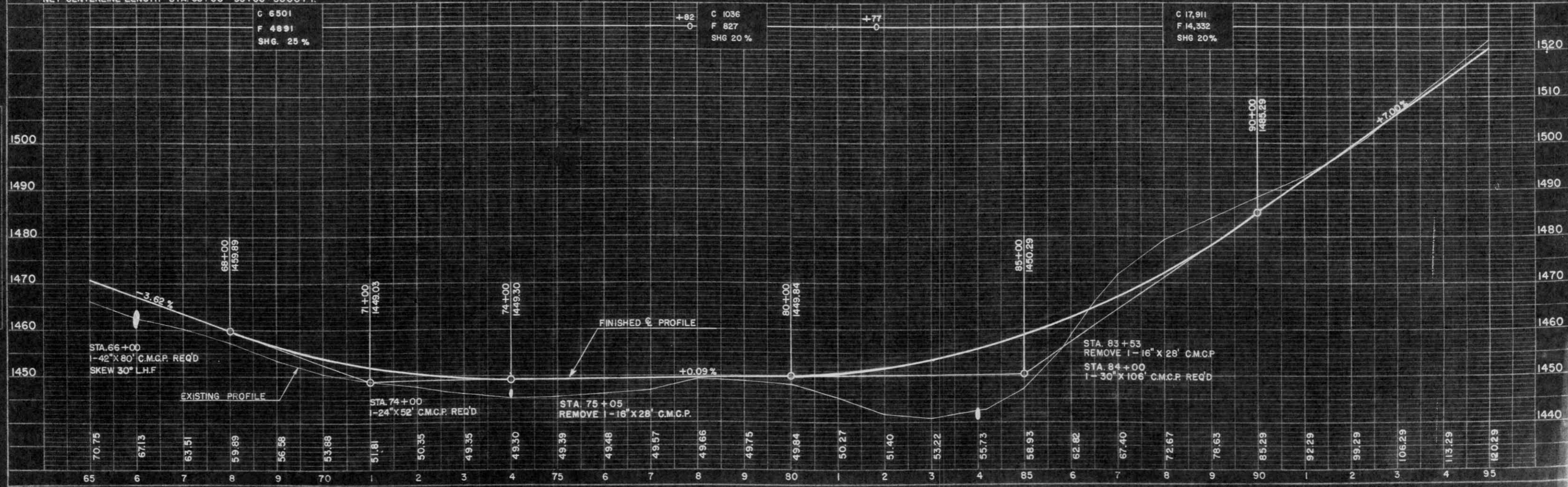
DATE: 5-58
SCALE: 1"=60'
DRAWN BY: J. BERGACKER
CHECKED BY: P. J. H.
PROJECT: S0570(6)



BENCH MARKS

NO.	STATION	DESCRIPTION	ELEV.
10	65+60	SPIKE IN 10" ASPEN 65' LT.	1464.90
9	75+40	" " 14" BASSWOOD 80' LT.	1445.21
8	85+70	" " 7" TWIN BIRCH 85' LT.	1458.60
7	95+85	" " 24" W. PINE 80' RT.	1522.43

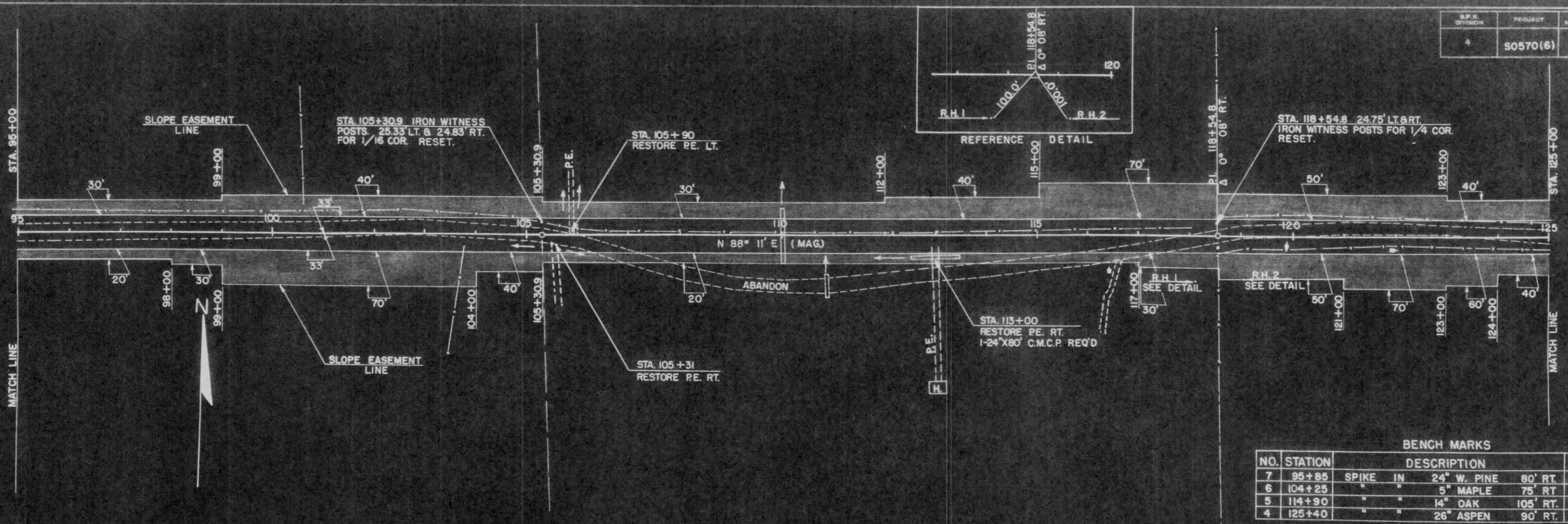
NET CENTERLINE LENGTH STA. 65+00 - 95+00 = 3000 FT.



DATE: 5-59
 1-60
 1-60
 BY: J. BERGACKER
 L. PETERS
 P. J. H.
 CHECKED: ALBERT GONZALEZ
 J. C. H.
 NO. 1581
 STRUCTURAL DIVISION

DATE: 5-59
 1-60
 1-60
 BY: J. BERGACKER
 L. PETERS
 P. J. H.
 CHECKED: ALBERT GONZALEZ
 J. C. H.
 NO. 1581
 STRUCTURAL DIVISION

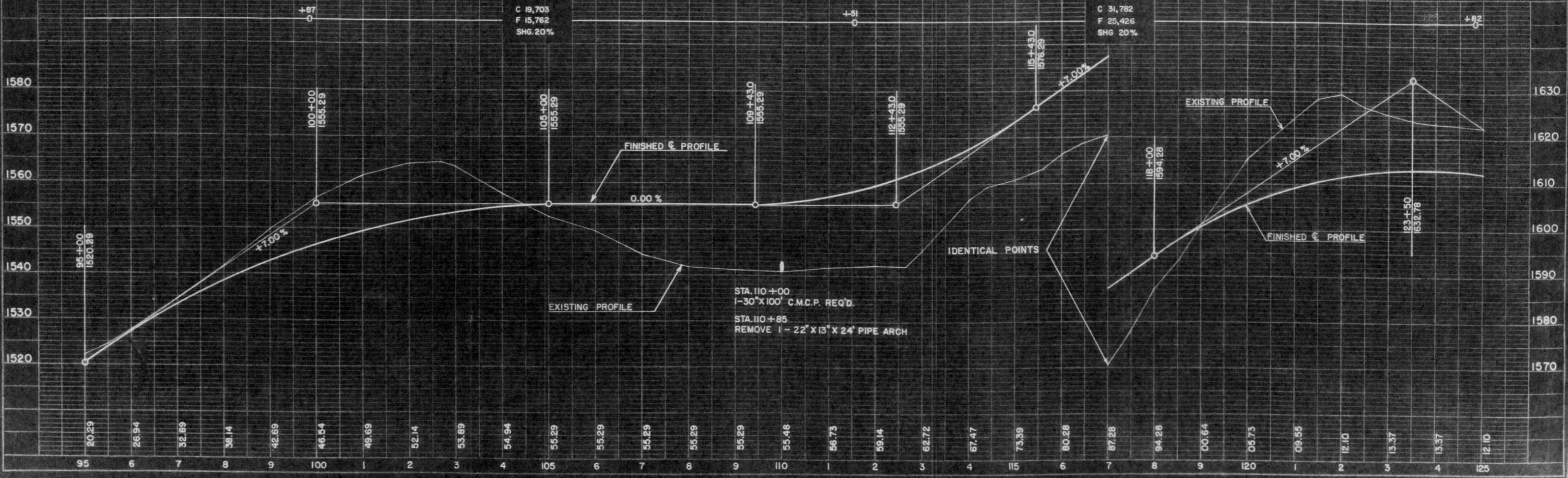
DATE: 1-28-80
 BY: J. BERGACKER
 CHECKED: P. J. H.
 PLAN
 SUBMITTED: ALUMINUM DISK
 NOTE BOOK
 BY: W. H. CHAZAR



BENCH MARKS

NO.	STATION	DESCRIPTION	ELEV.
7	95+85	SPIKE IN 24" W. PINE 80' RT.	1522.43
6	104+25	" " 5" MAPLE 75' RT.	1556.35
5	114+90	" " 14" OAK 105' RT.	1566.58
4	125+40	" " 26" ASPEN 90' RT.	1621.07

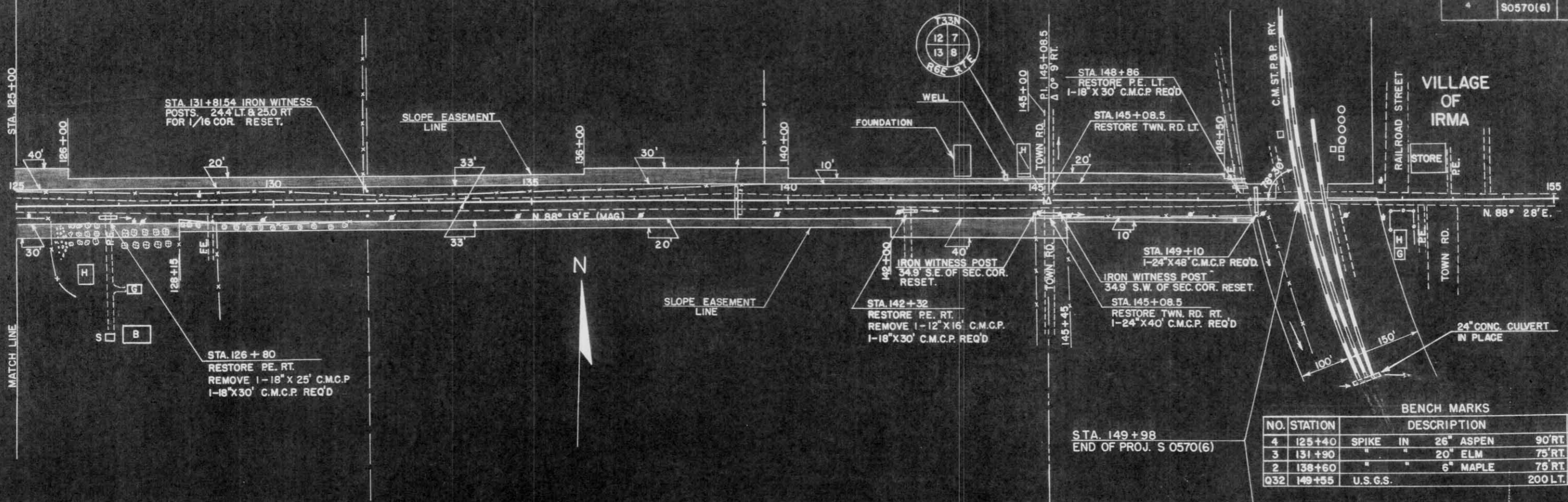
NET CENTERLINE LENGTH STA. 95+00 - 125+00 = 3000 FT.



DATE: 1-28-80
 BY: J. BERGACKER
 CHECKED: P. J. H.
 PROFILE
 SUBMITTED: CRAYON
 NOTE BOOK
 BY: L.B.M.

DATE: 5-89
 DRAWN BY: BERBACKER, PETERS
 CHECKED BY: F. J. H.
 PLAN: 5-89
 1-80
 1-80
 NOTE: SEE SHEET NO. 6 FOR ALLEGED CONCORDANCE WITH THE RECORD PLANS.

DATE: 5-89
 DRAWN BY: BERBACKER, PETERS
 CHECKED BY: F. J. H.
 PROFILE: 5-89
 1-80
 1-80
 NOTE: SEE SHEET NO. 6 FOR ALLEGED CONCORDANCE WITH THE RECORD PLANS.



BENCH MARKS

NO.	STATION	DESCRIPTION	ELEV.
4	125+40	SPIKE IN 26" ASPEN	90' RT. 1621.07
3	131+90	" " 20" ELM	75' RT. 1572.65
2	138+60	" " 6" MAPLE	75' RT. 1533.90
Q32	149+55	U.S.G.S.	200' LT. 1507.78

NET CENTERLINE LENGTH STA. 125+00 - 149+98 = 2498 FT.

