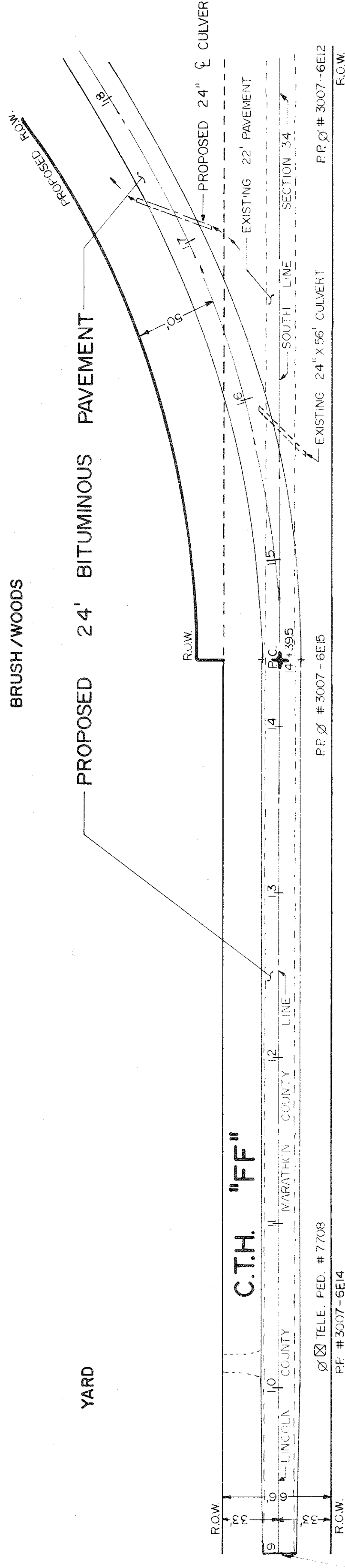


LINCOLN COUNTY - TOWN OF SCOTT

RONALD LEMMER

ELLAN M. GANZ



MILLING & PAVING LIMITS

BRUSH/WOODS

PAVEMENT & SUBGRADE SHALL INCLUDE:

- 3" BITUMINOUS PAVEMENT
- 7" GRAVEL
- 3" RECYCLED BLACKTOP
- 9" SAND

DATE	
BY	
PLANNED	
NOTED	
STRUCTURE NOTATION CHKD	
GRADES CHECKED	
NO. NOTED	
DATE	

BRUSH/WOODS

PAVEMENT & SUBGRADE SHALL INCLUDE:

- 3" BITUMINOUS PAVEMENT
- 7" GRAVEL
- 3" RECYCLED BLACKTOP
- 9" SAND

MARATHON COUNTY - TOWN OF MAINE

RALPH W. BUCH

LINCOLN COUNTY

ELLAN M. GANZ

PROPOSED 24' BITUMINOUS PAVEMENT

BRUSH

WOODS/BRUSH

C.T.H. "FF"

PROPOSED 24" CULVERT

EXISTING 22' PAVEMENT

EXISTING DRIVEWAY CULVERT

EXISTING 22' PAVEMENT

EXISTING DRIVEWAY CULVERT

EXISTING 22' PAVEMENT

EXISTING DRIVEWAY CULVERT

EXISTING 22' PAVEMENT

EXISTING DRIVEWAY CULVERT

EXISTING 22' PAVEMENT

EXISTING DRIVEWAY CULVERT

EXISTING 22' PAVEMENT

EXISTING DRIVEWAY CULVERT

EXISTING 22' PAVEMENT

EXISTING DRIVEWAY CULVERT

EXISTING 22' PAVEMENT

EXISTING DRIVEWAY CULVERT

EXISTING 22' PAVEMENT

EXISTING DRIVEWAY CULVERT

EXISTING 22' PAVEMENT

EXISTING DRIVEWAY CULVERT

EXISTING 22' PAVEMENT

EXISTING DRIVEWAY CULVERT

EXISTING 22' PAVEMENT

EXISTING DRIVEWAY CULVERT

EXISTING 22' PAVEMENT

EXISTING DRIVEWAY CULVERT

EXISTING 22' PAVEMENT

EXISTING DRIVEWAY CULVERT

EXISTING 22' PAVEMENT

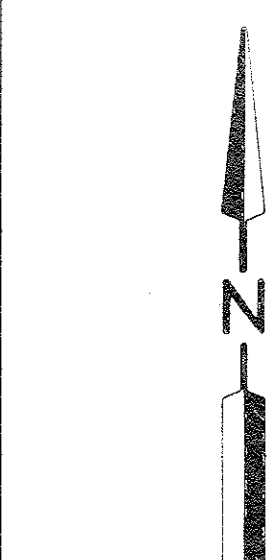
EXISTING DRIVEWAY CULVERT

EXISTING 22' PAVEMENT

EXISTING DRIVEWAY CULVERT

EXISTING 22' PAVEMENT

EXISTING DRIVEWAY CULVERT



SUPER ELEVATION ON CURVE IS 0.06' PER FOOT.

19+85 C.T.H. "FF" 1+00 60TH AVE.

PP # 3006-34R8

PP # 3006-34R9

PP # 3006-34L9

PP # 3006-34L9

PP # 3006-34L9

PP # 3006-34L9

PP # 3006-34L9

PP # 3006-34L9

PP # 3006-34L9

PP # 3006-34L9

PP # 3006-34L9

PP # 3006-34L9

PP # 3006-34L9

PP # 3006-34L9

PP # 3006-34L9

PP # 3006-34L9

PP # 3006-34L9

PP # 3006-34L9

PP # 3006-34L9

PP # 3006-34L9

PP # 3006-34L9

PP # 3006-34L9

PP # 3006-34L9

PP # 3006-34L9

PP # 3006-34L9

PP # 3006-34L9

PP # 3006-34L9

PP # 3006-34L9

PP # 3006-34L9

PP # 3006-34L9

PP # 3006-34L9

PP # 3006-34L9

PP # 3006-34L9

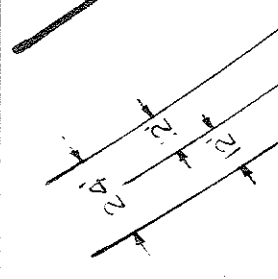
PP # 3006-34L9

PP # 3006-34L9

PP # 3006-34L9

PP # 3006-34L9

PP # 3006-34L9



SUPER ELEVATION ON CURVE IS 0.06' PER FOOT.

19+85 C.T.H. "FF" 1+00 60TH AVE.

PP # 3006-34R8

PP # 3006-34R9

PP # 3006-34L9

PP # 3006-34L9

PP # 3006-34L9

PP # 3006-34L9

PP # 3006-34L9

PP # 3006-34L9

PP # 3006-34L9

PP # 3006-34L9

PP # 3006-34L9

PP # 3006-34L9

PP # 3006-34L9

PP # 3006-34L9

PP # 3006-34L9

PP # 3006-34L9

PP # 3006-34L9

PP # 3006-34L9

PP # 3006-34L9

PP # 3006-34L9

PP # 3006-34L9

PP # 3006-34L9

PP # 3006-34L9

PP # 3006-34L9

PP # 3006-34L9

PP # 3006-34L9

PP # 3006-34L9

PP # 3006-34L9

PP # 3006-34L9

PP # 3006-34L9

PP # 3006-34L9

PP # 3006-34L9

PP # 3006-34L9

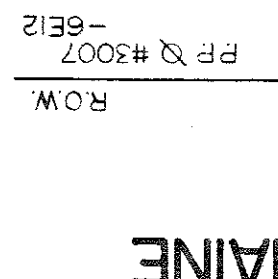
PP # 3006-34L9

PP # 3006-34L9

PP # 3006-34L9

PP # 3006-34L9

PP # 3006-34L9



SUPER ELEVATION ON CURVE IS 0.06' PER FOOT.

19+85 C.T.H. "FF" 1+00 60TH AVE.

PP # 3006-34R8

PP # 3006-34R9

PP # 3006-34L9

PP # 3006-34L9

PP # 3006-34L9

PP # 3006-34L9

PP # 3006-34L9

PP # 3006-34L9

PP # 3006-34L9

PP # 3006-34L9

PP # 3006-34L9

PP # 3006-34L9

PP # 3006-34L9

PP # 3006-34L9

PP # 3006-34L9

PP # 3006-34L9

PP # 3006-34L9

PP # 3006-34L9

PP # 3006-34L9

PP # 3006-34L9

PP # 3006-34L9

PP # 3006-34L9

PP # 3006-34L9

PP # 3006-34L9

PP # 3006-34L9

PP # 3006-34L9

PP # 3006-34L9

PP # 3006-34L9

PP # 3006-34L9

PP # 3006-34L9

PP # 3006-34L9

PP # 3006-34L9

PP # 3006-34L9

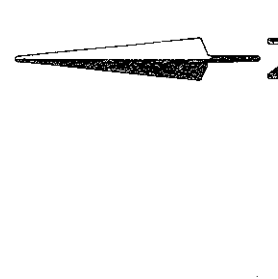
PP # 3006-34L9

PP # 3006-34L9

PP # 3006-34L9

PP # 3006-34L9

PP # 3006-34L9



SUPER ELEVATION ON CURVE IS 0.06' PER FOOT.

19+85 C.T.H. "FF" 1+00 60TH AVE.

PP # 3006-34R8

PP # 3006-34R9

PP # 3006-34L9

PP # 3006-34L9

PP # 3006-34L9

PP # 3006-34L9

PP # 3006-34L9

PP # 3006-34L9

PP # 3006-34L9

PP # 3006-34L9

PP # 3006-34L9

PP # 3006-34L9

PP # 3006-34L9

PP # 3006-34L9

PP # 3006-34L9

PP # 3006-34L9

PP # 3006-34L9

PP # 3006-34L9

PP # 3006-34L9

PP # 3006-34L9

PP # 3006-34L9

PP # 3006-34L9

PP # 3006-34L9

PP # 3006-34L9

PP # 3006-34L9

PP # 3006-34L9

PP # 3006-34L9

PP # 3006-34L9

PP # 3006-34L9

PP # 3006-34L9

PP # 3006-34L9

PP # 3006-34L9

PP # 3006-34L9

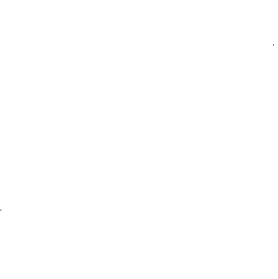
PP # 3006-34L9

PP # 3006-34L9

PP # 3006-34L9

PP # 3006-34L9

PP # 3006-34L9



SUPER ELEVATION ON CURVE IS 0.06' PER FOOT.

19+85 C.T.H. "FF" 1+00 60TH AVE.

PP # 3006-34R8

PP # 3006-34R9

PP # 3006-34L9

PP # 3006-34L9

PP # 3006-34L9

PP # 3006-34L9

PP # 3006-34L9

PP # 3006-34L9

PP # 3006-34L9

PP # 3006-34L9

PP # 3006-34L9

PP # 3006-34L9

PP # 3006-34L9

PP # 3006-34L9

PP # 3006-34L9

PP # 3006-34L9

PP # 3006-34L9

PP # 3006-34L9

PP # 3006-34L9

PP # 3006-34L9

PP # 3006-34L9

PP # 3006-34L9

PP # 3006-34L9

PP # 3006-34L9



**STORM WATER**

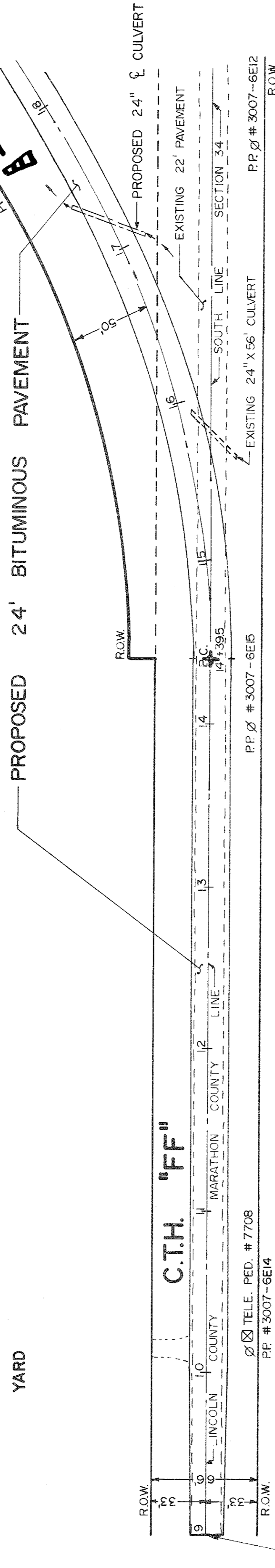
LINCOLN COUNTY - TOWN OF SCOTT

**ADD HAY BALES WHERE NEEDED**

RONALD LEMMER

ELLAN M. GANZ

BRUSH/WOODS



MILLING & PAVING LIMITS

MARATHON COUNTY - TOWN OF MAINE

RALPH W. BUCH

BRUSH/WOODS

PAVEMENT & SUBGRADE SHALL INCLUDE:

- 3" BITUMINOUS PAVEMENT
- 7" GRAVEL
- 3" RECYCLED BLACKTOP
- 9" SAND

LINCOLN COUNTY

SUPER ELEVATION ON CURVE IS 0.06' PER FOOT.

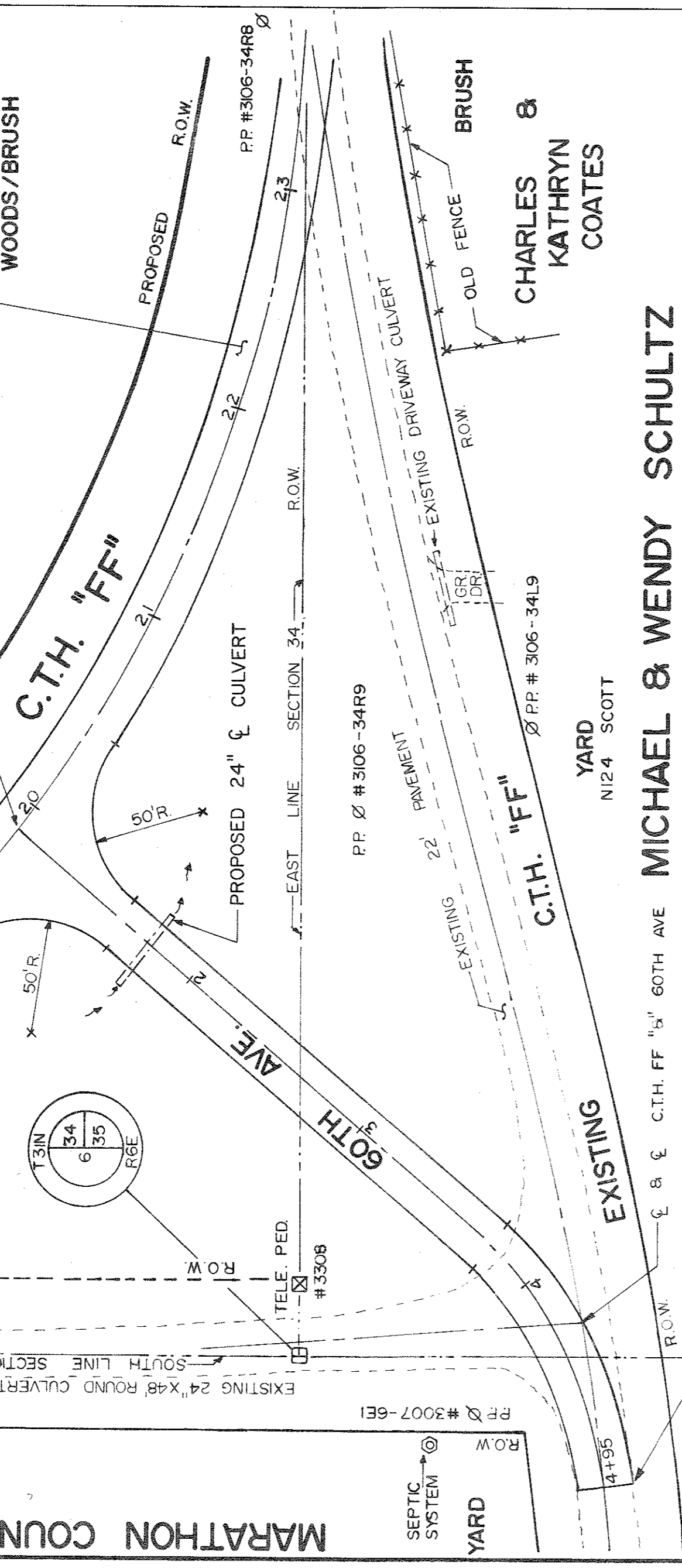


**TOP / SEED / MULCH WHEN DONE**

ELLAN M. GANZ

PROPOSED BITUMINOUS PAVEMENT

WOODS/BRUSH



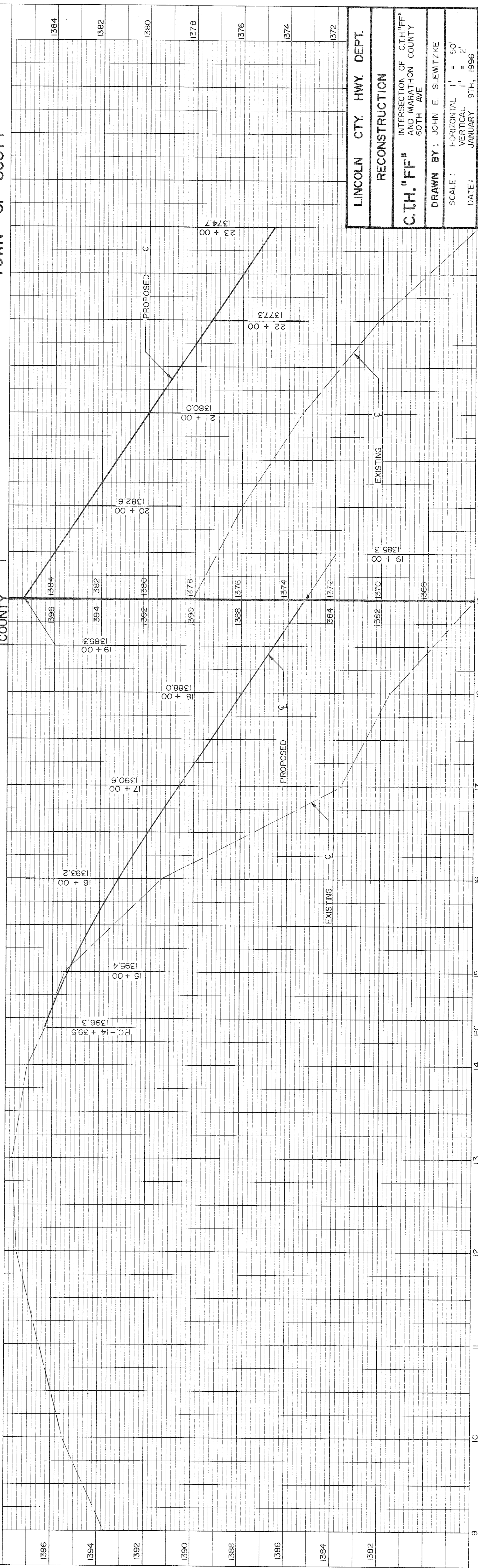
MILLING & PAVING LIMITS

MARATHON COUNTY - TOWN OF MAINE

MICHAEL & WENDY SCHULTZ

YARD N124 SCOTT

TOWN OF SCOTT



NO.	DATE	BY

NO.	DATE	BY

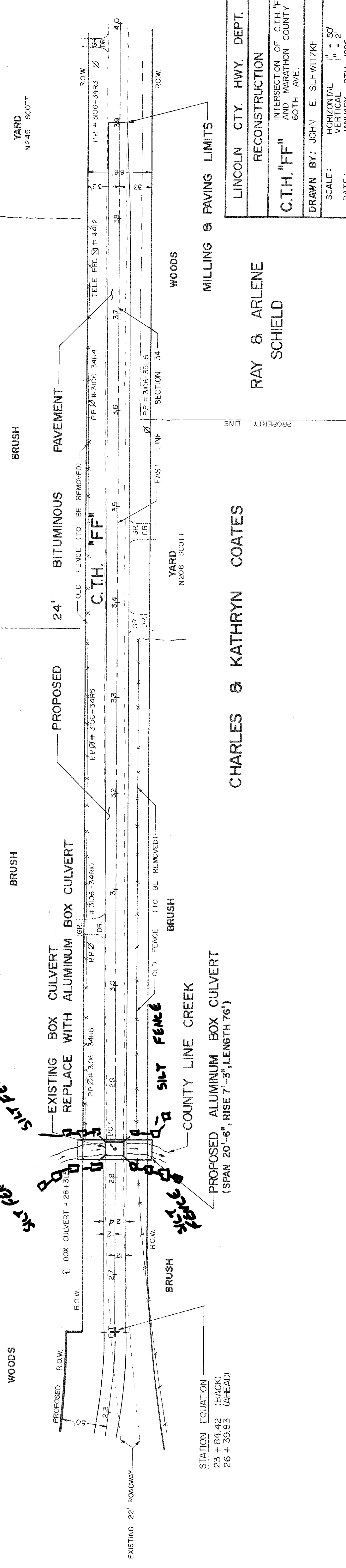
LINCOLN CTY. HWY. DEPT.
RECONSTRUCTION
C.T.H. "FF"
INTERSECTION OF C.T.H. "FF" AND MARATHON COUNTY 60TH AVE
DRAWN BY: JOHN E. SLEWITZKE
SCALE: HORIZONTAL 1" = 50' VERTICAL 1" = 2'
DATE: JANUARY 9TH, 1996

ELLAN M. GANZ

FERDINAND

OLLHOFF

NO.	
NOTE BOOK	
PLANNING CHECKED	
ALIGNED CHECKED	
RT. OF WAY CHECKED	
DATE	



CHARLES & KATHRYN COATES

RAY & ARLENE SCHIELD

LINCOLN CTY. HWY. DEPT.

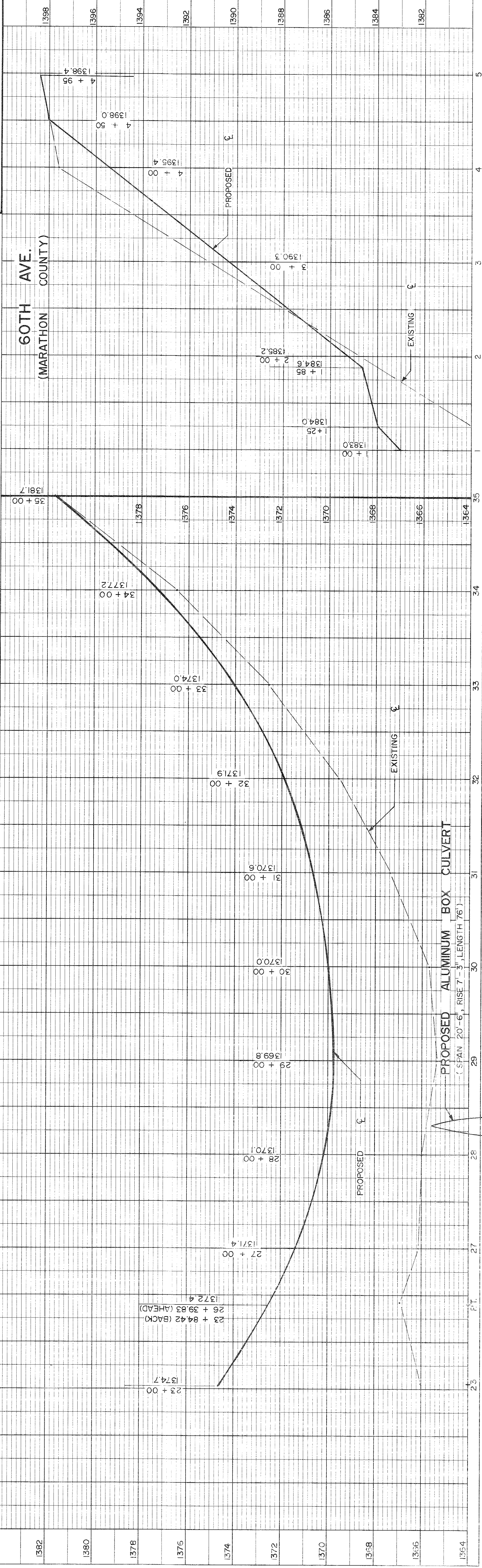
RECONSTRUCTION

INTERSECTION OF C.T.H. 'FF' AND MARATHON COUNTY 60TH AVE.

DRAWN BY: JOHN E. SLEWITZKE

SCALE: HORIZONTAL 1" = 50' VERTICAL 1" = 2'

DATE: JANUARY 9TH, 1996



NO.	
NOTE BOOK	
PLANNING CHECKED	
GRADES CHECKED	
STRUCTURE NOTATIONS CHECKED	
DATE	

APPROXIMATE CREEK BOTTOM IS 1358.5

PLATE 1 SINGLE PLAN - PROFILE CHARLES BRUNING CO. MADE IN U.S.A.