

Index of Sheets

Sheet No.	Title
Sheet No.4.0	
Sheet No.4.1	SCHEDULE OF LANDS & INTERESTS REQUIRED
Sheet No.4.2	LAYOUT SHOWING PROPERTY BOUNDARIES & ACREAGES
Sheet No.4.3-4.21	PLAN & PARCEL SHEETS

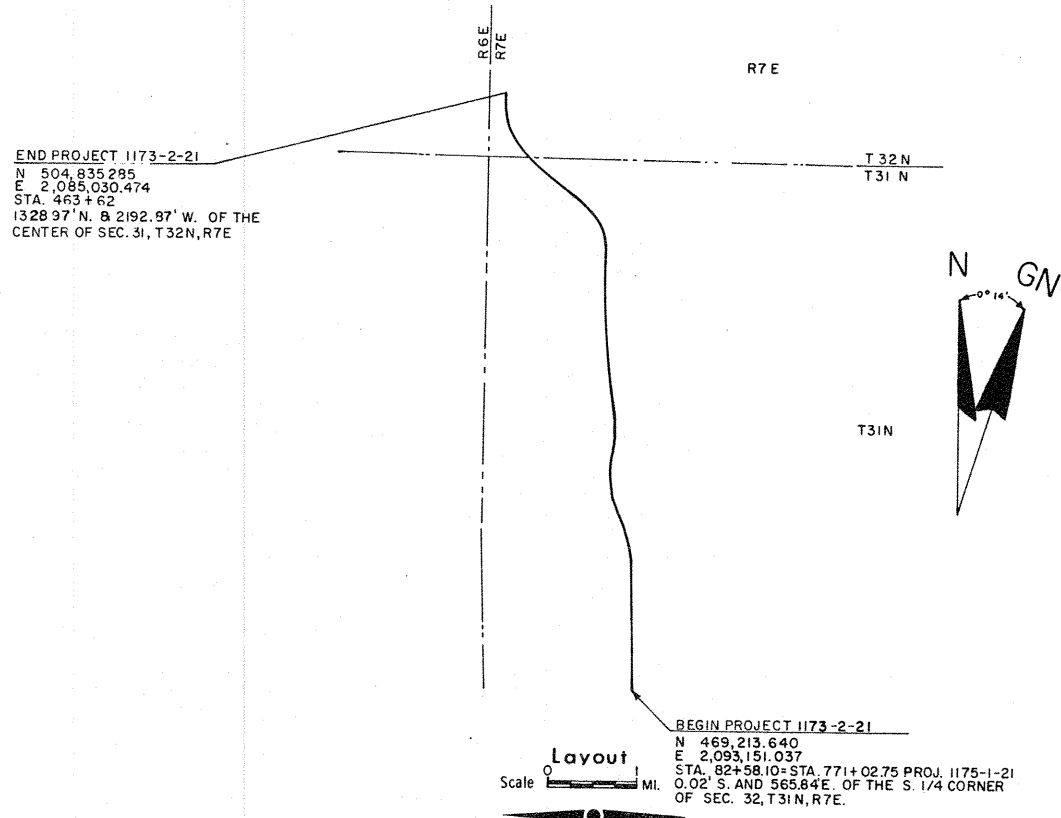
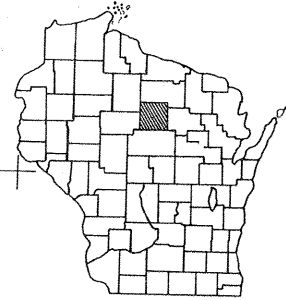
Sheet Number	Total Sheets
4	

STATE OF WISCONSIN
DEPARTMENT OF TRANSPORTATION
DIVISION OF HIGHWAYS

PLAT OF RIGHT OF WAY REQUIRED FOR

SOUTH COUNTY LINE - MERRILL
 U.S.H. 51
 LINCOLN COUNTY

PROJECT IDENTIFICATION NUMBER
 1173 - 2 - 21



END PROJECT 1173-2-21
 N 504,835.285
 E 2,085,030.474
 STA. 463+62
 1328.97' N. & 2192.87' W. OF THE
 CENTER OF SEC. 31, T32N, R7E

BEGIN PROJECT 1173-2-21
 N 469,213,640
 E 2,093,151,037
 STA. 82+58.10=STA. 771+02.75 PROJ. 1175-1-21
 0.02' S. AND 565.84'E. OF THE S. 1/4 CORNER
 OF SEC. 32, T31N, R7E.

Total Net Length of Centerline = 7.220 Mi.

REVISION DATE	STATE OF WISCONSIN DEPARTMENT OF TRANSPORTATION DIVISION OF HIGHWAYS
1-27-72	
9-25-72	
3-12-73	
7-24-73 NC	Date <u>3-8-71</u> <u>R.D. Schindler</u> District Engineer
12-9-77 NC	Recommended for Approval:
6-9-87 NC	Date _____ Approved: _____ Chief Design Engineer
	Date _____ Director, Bureau of Right of Way
	U.S. DEPARTMENT OF TRANSPORTATION FEDERAL HIGHWAY ADMINISTRATION
	REGIONS WISCONSIN DIVISION
	Approved: _____
	Date _____ Division Engineer

CONVENTIONAL SIGNS

STATE LINE	-----	* HIGHWAY HIGHWAY SEPARATION		CEMETERY	
COUNTY LINE	-----	HIGHWAY OVERPASS		FOUNDATION	
TOWNSHIP AND RANGE LINES	-----	* RAIL LINE OVERPASS		GAS PUMP ISLAND	
SECTION LINE	-----	ALL OTHER BRIDGES		BUILDING	
QUARTER LINE	-----	STREAM OR RIVER		IRON PIN	
SIXTEENTH LINE	-----	LAKE		POWER POLE	
NEW CENTERLINE		CATTLE PASS		TELEPHONE POLE	
NEW R/W LINE		RELOCATED STREAM OR RIVER		RAIL LINE	
OLD R/W LINE		TRAVELED WAY		TRANSMISSION TOWER AND LINE	
PROPERTY LINE		(Shown only in area of Frontage Roads, Interchanges or Dual Lanes)		UNDERGROUND CABLE MARKER	
CORPORATE LIMITS		STONE MONUMENT		WELL	
SLOPE INTERCEPTS		SEPTIC TANK		WINDMILL	
LOT, TIE AND OTHER MINOR DASHED LINES	-----				
UNDERGROUND FACILITY (POWER, TELEPHONE, TELEGRAPH, GAS, ETC.)					
NO ACCESS					
* LIMITED HIGHWAY EASEMENT (Shading omitted on Aerial Half-tones)					

STANDARD ABBREVIATIONS

ACRES	A. C.	NORTHEAST	N. E.
AND OTHERS	ET. AL.	NORTHWEST	N. W.
CENTRAL ANGLE OR DELTA	Δ	PAGE	P.
COMPANY	CO.	POINT OF CURVATURE	P. C.
CONCRETE	CONC.	POINT OF INTERSECTION	P. I.
CORNER	COR.	POINT OF TANGENCY	P. T.
CORPORATION	CORP.	POINT OF CURVE	P. O. C.
COUNTY TRUNK HIGHWAY	C. T. H.	POINT OF TANGENT	P. O. T.
DEGREE OF CURVE	D.	PROPERTY LINE	P. L.
EXTERNAL DISTANCE	E.	RADIUS	R.
GOVERNMENT	GOV'T.	RAILROAD	R. R.
INCORPORATED	INC.	SECTION	SEC.
INTERSECTION ANGLE	Δ OR I.	SOUTHEAST	S. E.
IRON PIN	I. P.	SOUTHWEST	S. W.
LENGTH OF CURVE	L.	STATE TRUNK HIGHWAY	S. T. H.
MILE	MI.	STATION	STA.
MISCELLANEOUS	MISC.	STORE	ST.
MONUMENT	MON.	TANGENT OF LENGTH	T.
		VOLUME	V.

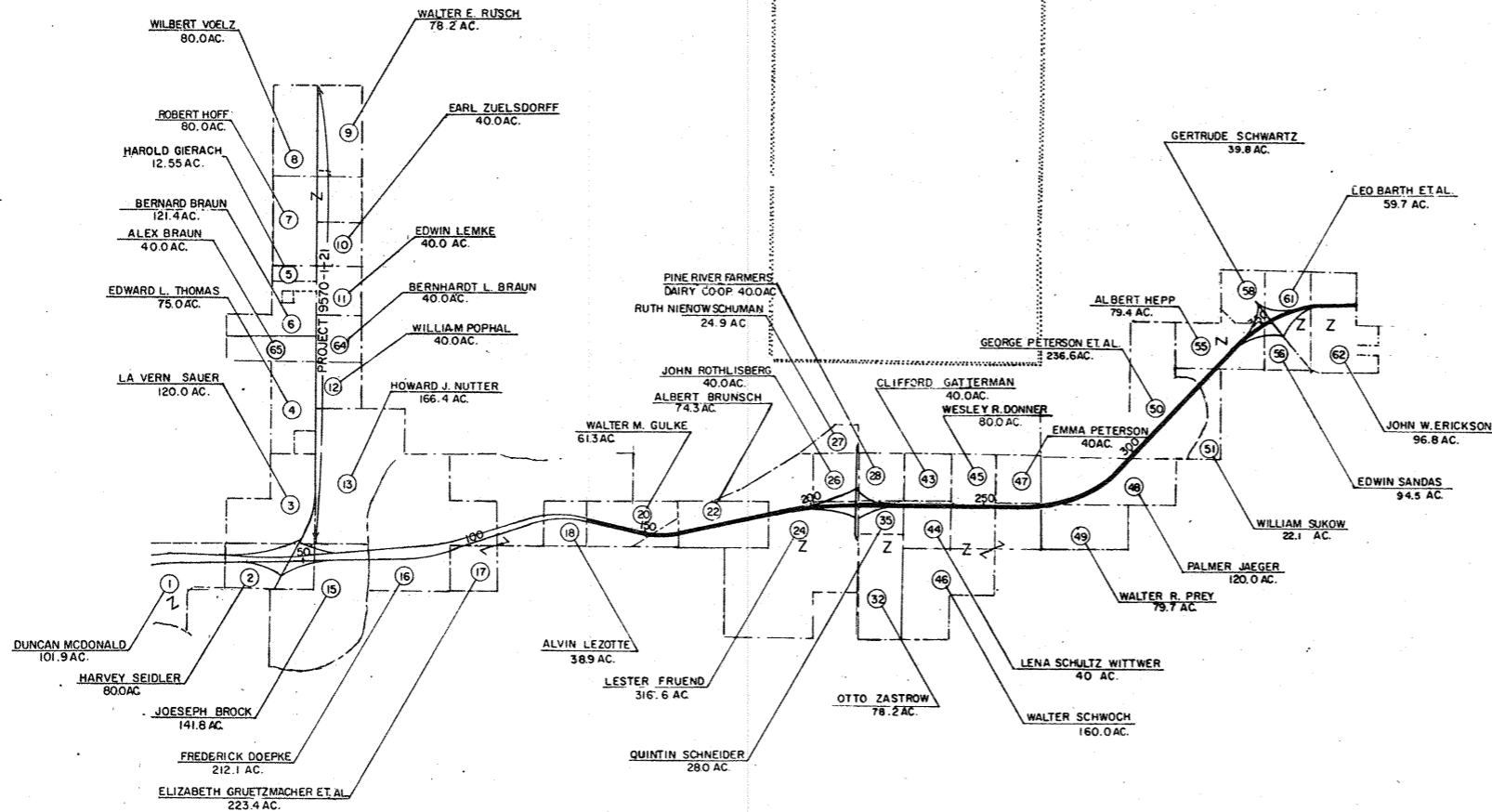
SCHEDULE OF LANDS AND INTERESTS REQUIRED

PARCEL NUMBER	SHEET NUMBER	OWNER	* INTEREST REQUIRED	ACRES	OPERATIONS PROJECT I. D.
1	4.3	DUNCAN MCDONALD	FEE & RELEASE OF RIGHTS	34.65	1173-2-21
2	4.4	HARVEY SEIDLER	FEE & RELEASE OF RIGHTS	47.34	1173-2-21
14	4.5	JOHN C. MADRAS	FEE & RELEASE OF RIGHTS	7.60	1173-2-21
15	4.5	JOSEPH BROCK	FEE & RELEASE OF RIGHTS	14.61	1173-2-21
16	4.5 - 4.6	FREDERICK A. DOEPKE	FEE & RELEASE OF RIGHTS	46.45	1173-2-21
17	4.6 - 4.7	ELIZABETH GRUETZMACHER ET AL.	FEE & RELEASE OF RIGHTS	19.28	1173-2-21
18	4.7	ALVIN LEZOTTE	FEE & RELEASE OF RIGHTS	14.16	1173-2-21
19	4.10-4.11 4.18-4.17-4.20	WISCONSIN PUBLIC SERVICE CORP.	RELEASE OF RIGHTS	-----	1173-2-40
20	4.8	WALTER M. GULKE	FEE & RELEASE OF RIGHTS	17.50	1173-2-21
21	4.8	EWALD KUNDEL	FEE & RELEASE OF RIGHTS	4.57	1173-2-21
22	4.9	ALBERT BRUNSCH	FEE & RELEASE OF RIGHTS	25.32	1173-2-21
23	4.9 - 4.10 4.13-4.16-4.17	MICHIGAN - WISCONSIN PIPELINE CO.	RELEASE OF RIGHTS	---	1173-2-41
24	4.10 & 4.12	LESTER FRIED	FEE & RELEASE OF RIGHTS	23.61	1173-2-21
26	4.10 4.11 - 4.13	JOHN ROTHLSBERG	FEE & RELEASE OF RIGHTS	10.60	1173-2-21
27	4.11	RUTH NIENOW SCHUMAN	FEE & L.H.E.	0.27	1173-2-21
28	4.11-4.13	PINE RIVER FARMERS DAIRY CO-OP.	FEE & RELEASE OF RIGHTS	8.23	1173-2-21
29	4.13	JAMES LEMKE	FEE & RELEASE OF RIGHTS	0.60	1173-2-21
30	4.12	RONALD SCHREIBER & LEROY GROBE L. C.	FEE & RELEASE OF RIGHTS	0.17	1173-2-21
31	4.12	DANIEL LEE FRICK	FEE & RELEASE OF RIGHTS	0.22	1173-2-21
32	4.12	OTTO ZASTROW	FEE & RELEASE OF RIGHTS	0.01	1173-2-21
33					
34	4.12	ROGER ZUELSDORFF	FEE	0.10	1173-2-21
35	4.12-4.13	QUINTIN SCHNEIDER	FEE & RELEASE OF RIGHTS	10.07	1173-2-21
36	4.12	HELEN ZUELSDORF	FEE	0.42	1173-2-21
37	4.10-4.12	AUDREY JANIK	FEE & RELEASE OF RIGHTS	1.45	1173-2-21
38	4.10	ROBERT L. SPEARS	FEE & RELEASE OF RIGHTS	0.56	1173-2-21
39	4.10	MRS. MARGARET SPEARS	FEE & RELEASE OF RIGHTS	0.57	1173-2-21
40	4.10	JACOB R. SOMMI	FEE	0.75	1173-2-21
41	4.10	MURIEL HINTZE	FEE	0.45	1173-2-21
42	4.10	RONALD SPEARS	FEE	2.08	1173-2-21
43	4.13	CLIFFORD GATTERMAN	FEE & RELEASE OF RIGHTS	3.33	1173-2-21
44	4.13	LENA SCHULTZ WITWER	FEE & RELEASE OF RIGHTS	8.77	1173-2-21
45	4.14	WESLEY R. DONNER	FEE & RELEASE OF RIGHTS	12.14	1173-2-21
46	4.14-4.15	WALTER SCHWOCH	FEE & RELEASE OF RIGHTS	10.88	1173-2-21
47	4.14-4.16	EMMA PETERSON	FEE & RELEASE OF RIGHTS	3.52	1173-2-21
48	4.16-4.17	PALMER JAEGER	FEE & RELEASE OF RIGHTS	26.45	1173-2-21
49	4.15-4.16	WALTER R. PREY	FEE & RELEASE OF RIGHTS	11.41	1173-2-21
50	4.16-4.17	GEORGE PETERSON ET AL.	FEE & RELEASE OF RIGHTS	27.94	1173-2-21
51	4.17-4.18	WILLIAM S. UKOW	FEE & RELEASE OF RIGHTS	4.23	1173-2-21
52	4.18	EDMOND H. MERKEL	FEE & RELEASE OF RIGHTS	0.63	1173-2-21
53	4.18	JAMES ANNIS	FEE & RELEASE OF RIGHTS	0.28	1173-2-21
54	4.18 & 4.19	JUNIOR FRED WILL	FEE & RELEASE OF RIGHTS	1.61	1173-2-21
55	4.18	ALBERT HOPP	FEE & RELEASE OF RIGHTS	21.24	1173-2-21
56	4.18-4.20	EDWIN SANDAS	FEE & RELEASE OF RIGHTS	1.23	1173-2-21
57	4.18	FLORIANN CHILSEN	FEE	0.93	1173-2-21
58	4.18-4.19	GERTRUDE SCHWARTZ	FEE & RELEASE OF RIGHTS	2.60	1173-2-21
59					
60	4.18-4.19	JUDITH A. ROWE	FEE & RELEASE OF RIGHTS	1.70	1173-2-21
61	4.18 4.20-4.21	LEO BARTH ET AL.	FEE & RELEASE OF RIGHTS	32.44	1173-2-21
62	4.20-4.21	JOHN W. ERICKSON	FEE & RELEASE OF RIGHTS	20.45	1173-2-21
67					
68	4.8	C. M. ST. P. & P. RAILROAD	HIGHWAY EASEMENT	1.35	1173-2-21
69	4.4 4.15-4.16	GENERAL TELEPHONE CO.	RELEASE OF RIGHTS	---	1173-2-43
71	4.5	HOWARD J. NUTTER	RELEASE OF RIGHTS	---	1173-2-21
72	4.8	WISCONSIN PUBLIC SERVICE CORP	FEE	0.67	1173-2-40
73	4.8	WISCONSIN PUBLIC SERVICE CORP	RELEASE OF RIGHTS	---	1173-2-40
74	4.4-4.18	WISCONSIN PUBLIC SERVICE CORP	RELEASE OF RIGHTS	---	1173-2-40
75	4.19	EDMUND DYMERSKI	RELEASE OF RIGHTS	---	1173-2-21
76	4.11	GEORGE F. JENSEN	FEE	0.17	1173-2-21

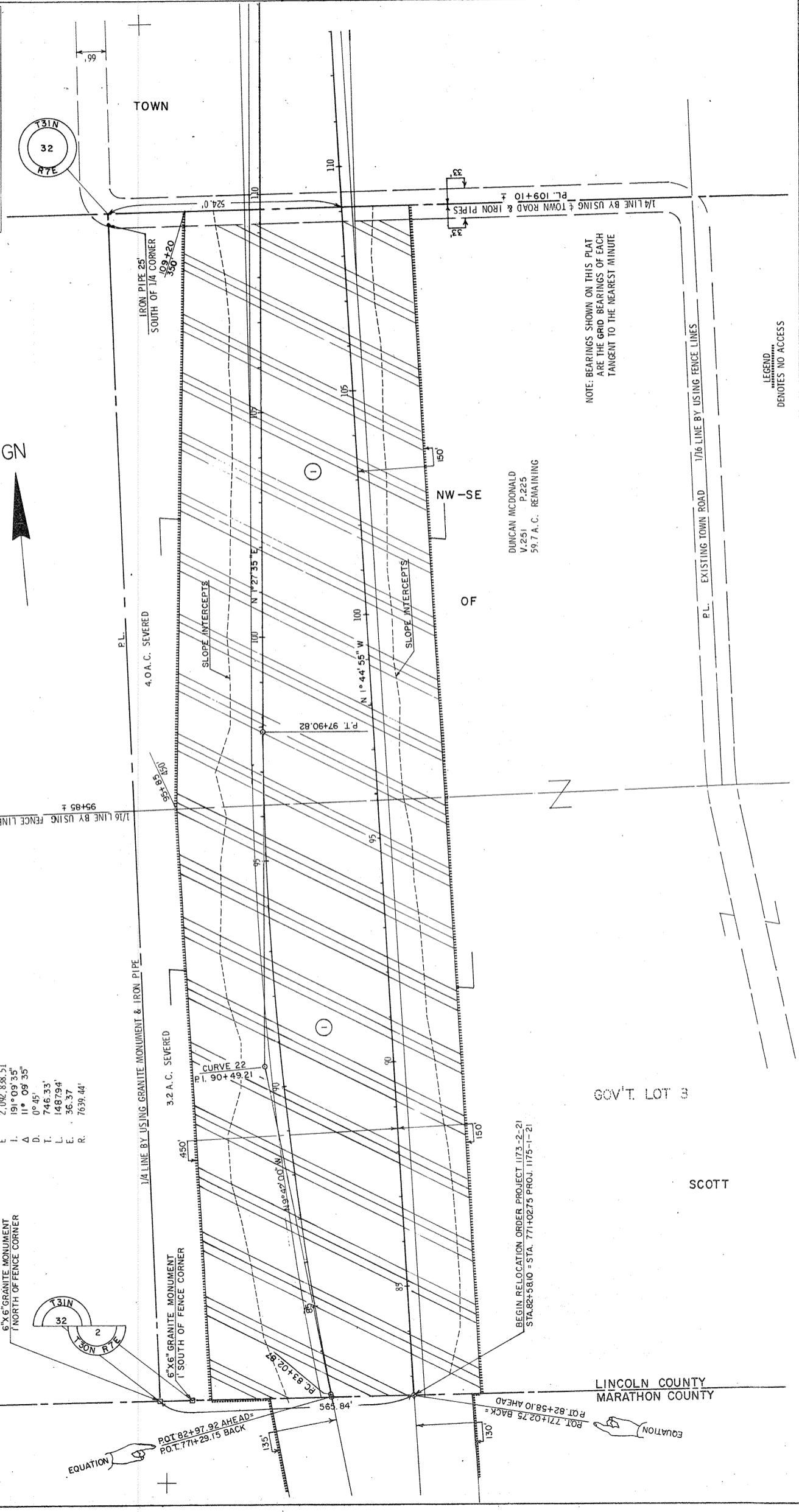
* TO BE ACQUIRED IN THE NAME OF THE STATE OF WISCONSIN

REVISION DATE	PROJECT I. D.	SHEET NUMBER	TOTAL SHEETS
1-27-72	1173-2-21		
9-25-72			
3-12-73	FEDERAL PROJECT DESIGNATION	4.1	
7-24-73			
12-9-77	South County Line - Merrill		
6-9-87	U. S. H. 51		
	Lincoln County		
	DATE Mar. 8, 1971		
CONST. PROJECT			

REVISION DATE	PROJECT ID	SHEET NUMBER	TOTAL SHEETS
1-27-72	1173-2-21	4.2	
9-25-72 NC			
3-12-73			
7-24-73 NC			
12-9-77 NC			
6-9-67 NC	Layout Showing Property Boundaries & Acreage		
	U.S.H. 51		Lincoln County
	Not to Scale		DATE MARCH 8, 1971
CONST PROJECT			



REVISION	DATE	PROJECT TO	SHEET NUMBER	TOTAL SHEETS
1-27-72		1173-2-21	4.3	
9-23-72	INC	FEDERAL PROJECT DESIGNATION		
3-12-73				
7-24-73	INC			
12-9-77	INC			
6-9-87	INC			
CONST. PROJECT DATE MARCH 8, 1971				



CURVE 22
 P. I. 90+49.21
 N. 469.954.24
 E. 2,082.838.51
 I. 191° 03' 35"
 Δ 11° 09' 35"
 D. 0° 45'
 T. 746.33'
 L. 1487.94'
 E. 36.37'
 R. 7639.44'

DUNCAN McDONALD
 V. 251 P. 225
 59.7 A.C. REMAINING

NOTE: BEARINGS SHOWN ON THIS PLAT
 ARE THE GRID BEARINGS OF EACH
 TANGENT TO THE NEAREST MINUTE.

LEGEND

 DENOTES NO ACCESS

6"x6" GRANITE MONUMENT
 1' NORTH OF FENCE CORNER

6"x6" GRANITE MONUMENT
 1' SOUTH OF FENCE CORNER

BEGIN RELOCATION ORDER PROJECT 1173-2-21
 STA. 82+58.10 = STA. 771+02.75 PROJ. 1175-1-21

LINCOLN COUNTY
 MARATHON COUNTY

EQUATION
 P.O.T. 82+97.92 AHEAD
 P.O.T. 771+29.15 BACK

EQUATION
 P.O.T. 82+58.10 AHEAD
 P.O.T. 771+02.75 BACK

REVISION	DATE	PROJECT NO.	SHEET NUMBER	TOTAL SHEETS
1-27-72		1173-2-21	4.4	4.4
9-25-72				
3-12-73				
7-24-73				
12-9-77				
6-9-87				
PLAT OF RIGHT OF WAY REQUIRED SOUTH COUNTY LINE - MERRILL COUNTY LINCOLN U.S.H. 51 SCALE 1"=200' DATE MARCH 8, 1971				

TOWN

- CURVE 96
- P. I. 129+53.25
- M. 47.3 86.1 73
- E. 2,092.938.08
- I. 172° 20' 33"
- A. 7° 39' 27"
- D. 0° 30'
- T. 766.89'
- L. 1531.49'
- E. 25.63'
- R. 11459.16'

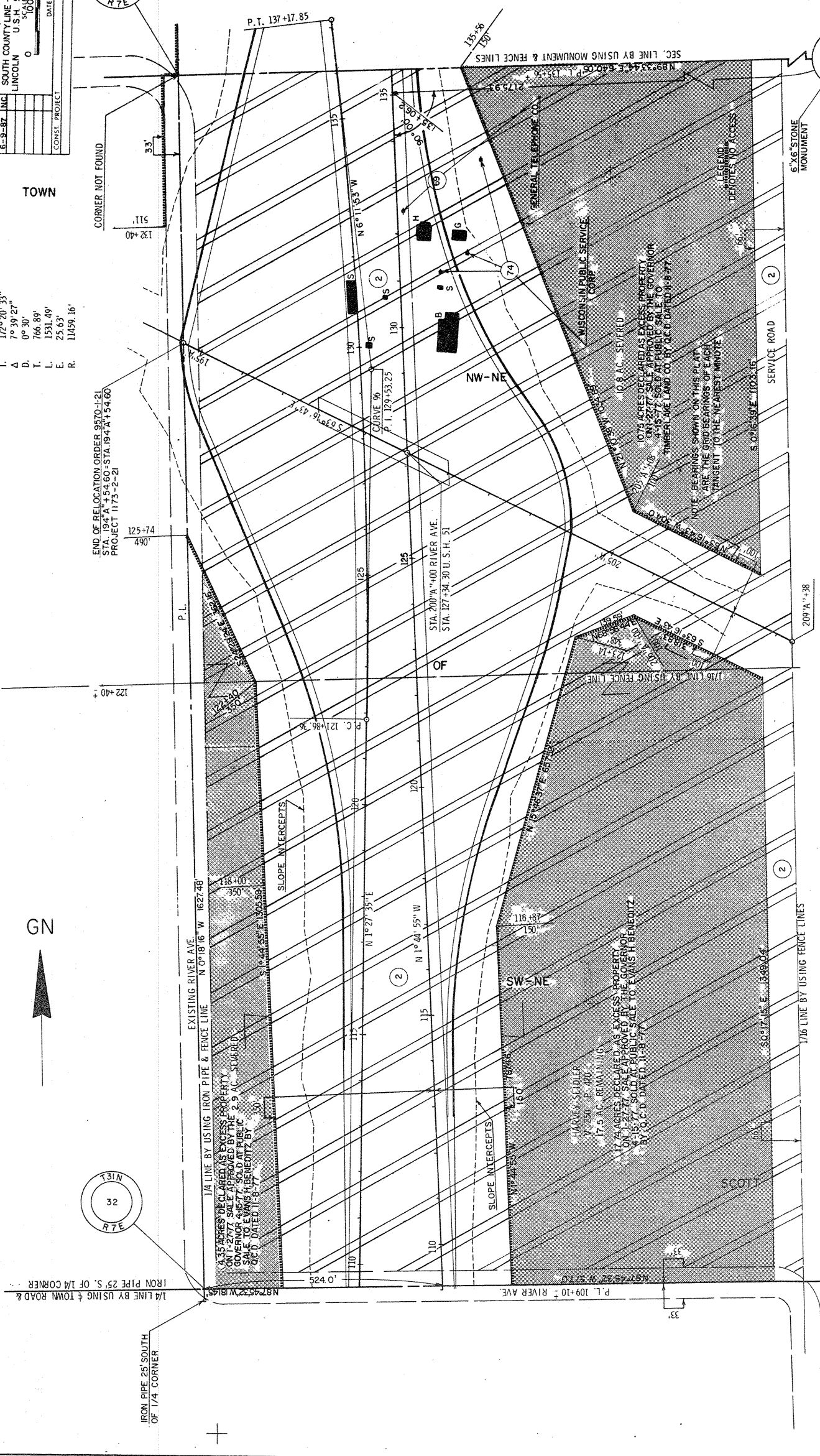
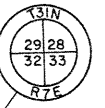
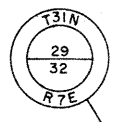
GN



END OF RELOCATION ORDER 9570-1-21
STA. 194+1.54.60 - STA. 194+1.54.60
PROJECT 1173-2-21

1/4 LINE BY USING 1/4 CORNER
IRON PIPE 25' SOUTH
OF 1/4 CORNER

IRON PIPE 25' SOUTH
OF 1/4 CORNER



EXISTING RIVER AVE
N 0° 18' 16" W 1627.26'

1/4 LINE BY USING IRON PIPE & FENCE LINE
N 0° 18' 16" W 1627.26'

17.5 ACRES DECLARED AS EXCESS PROPERTY
ON 1-27-77 SALE APPROVED BY THE GOVERNOR
SALE TO EVANS H. BENEDICTZ BY
O.C.D. DATED 11-8-77

17.5 ACRES REMAINING
HARVEY SEIDLER
P. 470

17.74 ACRES DECLARED AS EXCESS PROPERTY
ON 1-27-77 SALE APPROVED BY THE GOVERNOR
SALE TO EVANS H. BENEDICTZ
BY O.C.D. DATED 11-8-77

107.5 ACRES DECLARED AS EXCESS PROPERTY
ON 1-27-77 SALE APPROVED BY THE GOVERNOR
SALE TO EVANS H. BENEDICTZ
BY O.C.D. DATED 11-8-77

107.5 ACRES DECLARED AS EXCESS PROPERTY
ON 1-27-77 SALE APPROVED BY THE GOVERNOR
SALE TO EVANS H. BENEDICTZ
BY O.C.D. DATED 11-8-77

107.5 ACRES DECLARED AS EXCESS PROPERTY
ON 1-27-77 SALE APPROVED BY THE GOVERNOR
SALE TO EVANS H. BENEDICTZ
BY O.C.D. DATED 11-8-77

107.5 ACRES DECLARED AS EXCESS PROPERTY
ON 1-27-77 SALE APPROVED BY THE GOVERNOR
SALE TO EVANS H. BENEDICTZ
BY O.C.D. DATED 11-8-77

107.5 ACRES DECLARED AS EXCESS PROPERTY
ON 1-27-77 SALE APPROVED BY THE GOVERNOR
SALE TO EVANS H. BENEDICTZ
BY O.C.D. DATED 11-8-77

107.5 ACRES DECLARED AS EXCESS PROPERTY
ON 1-27-77 SALE APPROVED BY THE GOVERNOR
SALE TO EVANS H. BENEDICTZ
BY O.C.D. DATED 11-8-77

107.5 ACRES DECLARED AS EXCESS PROPERTY
ON 1-27-77 SALE APPROVED BY THE GOVERNOR
SALE TO EVANS H. BENEDICTZ
BY O.C.D. DATED 11-8-77

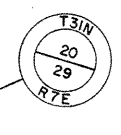
107.5 ACRES DECLARED AS EXCESS PROPERTY
ON 1-27-77 SALE APPROVED BY THE GOVERNOR
SALE TO EVANS H. BENEDICTZ
BY O.C.D. DATED 11-8-77

107.5 ACRES DECLARED AS EXCESS PROPERTY
ON 1-27-77 SALE APPROVED BY THE GOVERNOR
SALE TO EVANS H. BENEDICTZ
BY O.C.D. DATED 11-8-77

107.5 ACRES DECLARED AS EXCESS PROPERTY
ON 1-27-77 SALE APPROVED BY THE GOVERNOR
SALE TO EVANS H. BENEDICTZ
BY O.C.D. DATED 11-8-77

107.5 ACRES DECLARED AS EXCESS PROPERTY
ON 1-27-77 SALE APPROVED BY THE GOVERNOR
SALE TO EVANS H. BENEDICTZ
BY O.C.D. DATED 11-8-77

REVISION DATE	PROJECT TO	SHEET NUMBER	TOTAL SHEETS
1-27-72	1173-2-21	4.6	
9-25-72	FEDERAL PROJECT DESIGNATION		
3-12-73			
7-24-73			
12-9-77	Plat of Right of Way Required South County Line - Merrill Lincoln U.S.H. 51 County		
6-9-87			
	SCALE	100	200 Ft.
	DATE	MARCH 8, 1971	
	CONSTR. PROJECT		



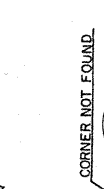
NOTE: BEARINGS SHOWN ON THIS PLAT ARE THE GRID BEARINGS OF EACH TANGENT TO THE NEAREST MINUTE

CURVE 196
 P. I. 174+35.23
 N. 478.319.79
 E. 2,092.453.94
 L. 171° 22' 37"
 Δ. 8° 37' 23"
 D. 0° 20'
 T. 863.93'
 L. 1724.59'
 E. 32.52'
 R. 11459.16

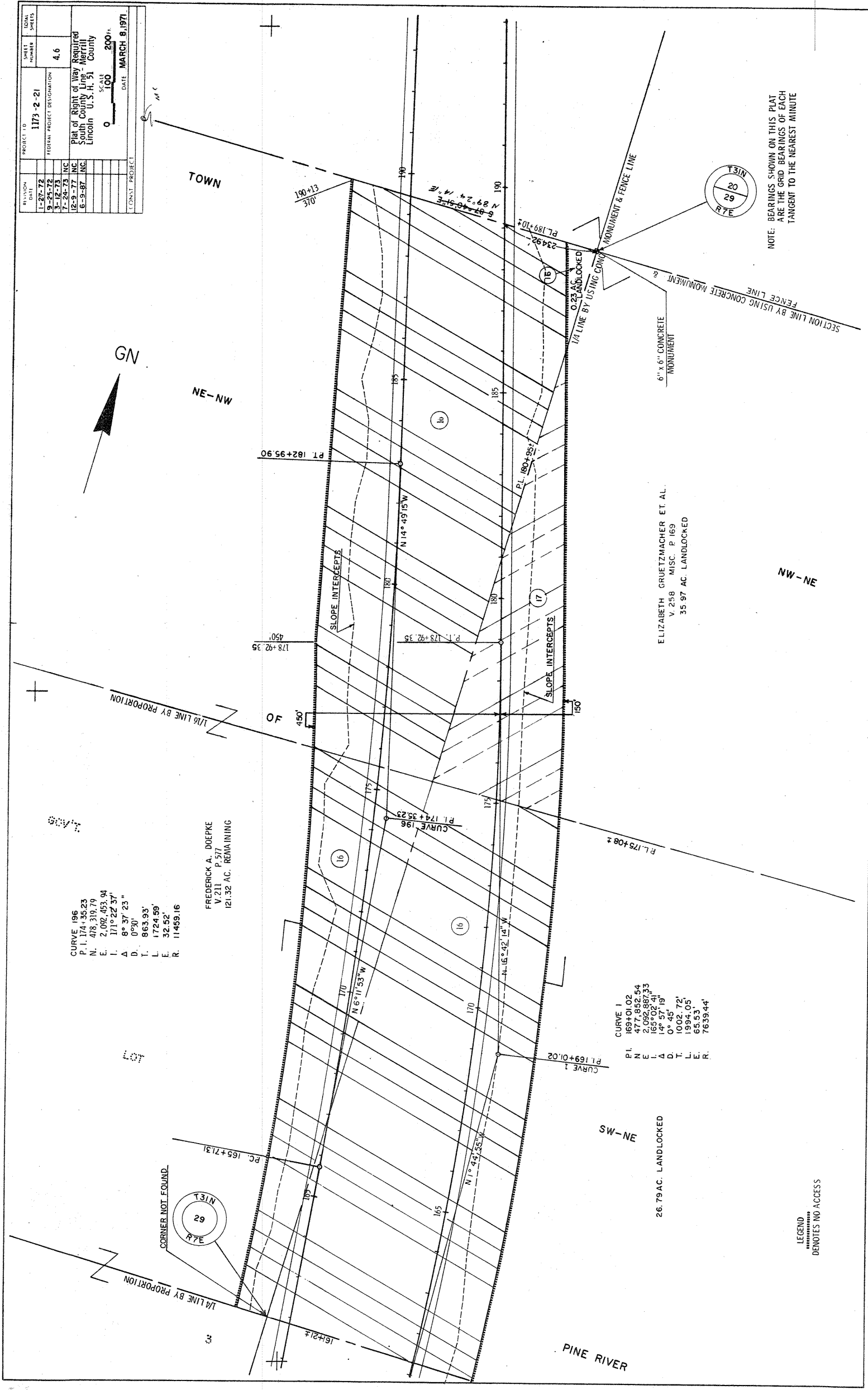
FREDERICK A. DOEPKE
 V. 211 P. 577
 121.32 AC. REMAINING

CURVE 1
 P. I. 169+01.02
 N. 477.852.54
 E. 2,092.887.33
 L. 165° 02' 41"
 Δ. 14° 57' 19"
 D. 0° 45'
 T. 1002.72'
 L. 1994.05'
 E. 65.53'
 R. 7639.44'

ELIZABETH GRUETZMACHER ET AL.
 V. 258 MISC. P. 169
 35.97 AC. LANDLOCKED



LEGEND
 DENOTES NO ACCESS



REVISION	DATE	PROJECT ID	SHEET NUMBER	TOTAL SHEETS
1-27-72		1173-2-21	4.7	
9-23-72		FEDERAL PROJECT DESIGNATION		
3-16-73				
12-9-77		PLAT OF RIGHT OF WAY REQUIRED		
6-9-87		South County Line - Merrill		
		Lincoln U.S.H. 51 County		
		SCALE 1"=100'		
		DATE MARCH 8, 1971		

GN

SE - SW

NE - SW

1/4 LINE BY USING IP & FENCE LINE

1/4 LINE BY USING CONC. MONUMENT & IP, CEDAR POST PL

1/16 LINE BY USING PROPERTY LINES

1/4 LINE BY USING CONC. MONUMENT & IP, CEDAR POST PL

WISCONSIN PUBLIC SERVICE CORP.
V. 209 ST. P. & R. R.
C.M. ST. P. & R. R.

IRON PIPE & CEDAR POST

SCV'T. LOT 3

SCV'T. LOT 3

EXISTING TOWN ROAD PL

L.H.E. CONSTRUCTION ACCESS
0.6 AC. (TEMP)

ALVIN LEZOTTE
V. 272 P. 468
8.97 AC. REMAINING

ELIZABETH GRUETZMACHER ET. AL.
V. 258 MISC. P. 169
159.8 AC. REMAINING

14.8 AC. LANDLOCKED

8.2 AC. LANDLOCKED

PL. 205+83.80

PL. 202+69.7

PL. 216+08.7

PL. 215+91.47

PL. 189+10.7

PL. 178+78.72

PL. 199+78.72

PL. 196+76.31

PL. 190

PL. 195

PL. 200

PL. 205

PL. 210

PL. 215

PL. 220

PL. 225

PL. 230

PL. 235

PL. 240

PL. 245

PL. 250

PL. 255

PL. 260

PL. 265

PL. 270

PL. 275

PL. 280

PL. 285

PL. 290

PL. 295

PL. 300

PL. 305

PL. 310

PL. 315

PL. 320

PL. 325

PL. 330

PL. 335

PL. 340

PL. 345

PL. 350

PL. 355

PL. 360

PL. 365

PL. 370

PL. 375

PL. 380

PL. 385

PL. 390

PL. 395

PL. 400

PL. 405

PL. 410

PL. 415

PL. 420

PL. 425

PL. 430

PL. 435

PL. 440

PL. 445

PL. 450

PL. 455

PL. 460

PL. 465

PL. 470

PL. 475

PL. 480

PL. 485

PL. 490

PL. 495

PL. 500

PL. 505

PL. 510

PL. 515

PL. 520

PL. 525

PL. 530

PL. 535

PL. 540

PL. 545

PL. 550

PL. 555

PL. 560

PL. 565

PL. 570

PL. 575

PL. 580

PL. 585

PL. 590

PL. 595

PL. 600

PL. 605

PL. 610

PL. 615

PL. 620

PL. 625

PL. 630

PL. 635

PL. 640

PL. 645

PL. 650

PL. 655

PL. 660

PL. 665

PL. 670

PL. 675

PL. 680

PL. 685

PL. 690

PL. 695

PL. 700

PL. 705

PL. 710

PL. 715

PL. 720

PL. 725

PL. 730

PL. 735

PL. 740

PL. 745

PL. 750

PL. 755

PL. 760

PL. 765

PL. 770

PL. 775

PL. 780

PL. 785

PL. 790

PL. 795

PL. 800

PL. 805

PL. 810

PL. 815

PL. 820

PL. 825

PL. 830

PL. 835

PL. 840

PL. 845

PL. 850

PL. 855

PL. 860

PL. 865

PL. 870

PL. 875

PL. 880

PL. 885

PL. 890

PL. 895

PL. 900

PL. 905

PL. 910

PL. 915

PL. 920

PL. 925

PL. 930

PL. 935

PL. 940

PL. 945

PL. 950

PL. 955

PL. 960

PL. 965

PL. 970

PL. 975

PL. 980

PL. 985

PL. 990

PL. 995

PL. 1000

SECTION LINE BY USING MONUMENT & FENCE LINE

6" X 6" CONC. MONUMENT

199° 49' 51" W

196° 42' 14" W

169° 37' 51" E

166° 42' 14" W

163° 42' 14" W

160° 42' 14" W

157° 42' 14" W

154° 42' 14" W

151° 42' 14" W

148° 42' 14" W

145° 42' 14" W

142° 42' 14" W

139° 42' 14" W

136° 42' 14" W

133° 42' 14" W

130° 42' 14" W

127° 42' 14" W

124° 42' 14" W

121° 42' 14" W

118° 42' 14" W

115° 42' 14" W

112° 42' 14" W

109° 42' 14" W

106° 42' 14" W

103° 42' 14" W

100° 42' 14" W

97° 42' 14" W

94° 42' 14" W

91° 42' 14" W

88° 42' 14" W

85° 42' 14" W

82° 42' 14" W

79° 42' 14" W

76° 42' 14" W

73° 42' 14" W

70° 42' 14" W

67° 42' 14" W

64° 42' 14" W

61° 42' 14" W

58° 42' 14" W

55° 42' 14" W

52° 42' 14" W

49° 42' 14" W

46° 42' 14" W

43° 42' 14" W

40° 42' 14" W

37° 42' 14" W

34° 42' 14" W

31° 42' 14" W

28° 42' 14" W

25° 42' 14" W

22° 42' 14" W

19° 42' 14" W

16° 42' 14" W

13° 42' 14" W

10° 42' 14" W

7° 42' 14" W

4° 42' 14" W

1° 42' 14" W

0° 42' 14" W

315° 42' 14" W

312° 42' 14" W

309° 42' 14" W

306° 42' 14" W

303° 42' 14" W

300° 42' 14" W

297° 42' 14" W

294° 42' 14" W

291° 42' 14" W

288° 42' 14" W

285° 42' 14" W

282° 42' 14" W

279° 42' 14" W

276° 42' 14" W

273° 42' 14" W

270° 42' 14" W

267° 42' 14" W

264° 42' 14" W

261° 42' 14" W

258° 42' 14" W

255° 42' 14" W

252° 42' 14" W

249° 42' 14" W

246° 42' 14" W

243° 42' 14" W

240° 42' 14" W

237° 42' 14" W

234° 42' 14" W

231° 42' 14" W

228° 42' 14" W

225° 42' 14" W

222° 42' 14" W

219° 42' 14" W

216° 42' 14" W

213° 42' 14" W

210° 42' 14" W

207° 42' 14" W

204° 42' 14" W

201° 42' 14" W

198° 42' 14" W

195° 42' 14" W

192° 42' 14" W

189° 42' 14" W

186° 42' 14" W

183° 42' 14" W

180° 42' 14" W

177° 42' 14" W

174° 42' 14" W

171° 42' 14" W

168° 42' 14" W

165° 42' 14" W

162° 42' 14" W

159° 42' 14" W

156° 42' 14" W

153° 42' 14" W

150° 42' 14" W

147° 42' 14" W

144° 42' 14" W

141° 42' 14" W

138° 42' 14" W

135° 42' 14" W

132° 42' 14" W

129° 42' 14" W

126° 42' 14" W

123° 42' 14" W

120° 42' 14" W

117° 42' 14" W

114° 42' 14" W

111° 42' 14" W

108° 42' 14" W

105° 42' 14" W

102° 42' 14" W

99° 42' 14" W

96° 42' 14" W

93° 42' 14" W

90° 42' 14" W

87° 42' 14" W

84° 42' 14" W

81° 42' 14" W

78° 42' 14" W

75° 42' 14" W

72° 42' 14" W

69° 42' 14" W

66° 42' 14" W

63° 42' 14" W

60° 42' 14" W

57° 42' 14" W

54° 42' 14" W

51° 42' 14" W

48° 42' 14" W

45° 42' 14" W

42° 42' 14" W

39° 42' 14" W

36° 42' 14" W

33° 42' 14" W

30° 42' 14" W

27° 42' 14" W

24° 42' 14" W

21° 42' 14" W

18° 42' 14" W

15° 42' 14" W

12° 42' 14" W

9° 42' 14" W

6° 42' 14" W

3° 42' 14" W

0° 42' 14" W

330° 42' 14" W

327° 42' 14" W

324° 42' 14" W

321° 42' 14" W

318° 42' 14" W

315° 42' 14" W

312° 42' 14" W

309° 42' 14" W

306° 42' 14" W

303° 42' 14" W

300° 42' 14" W

297° 42' 14" W

294° 42' 14" W

291° 42' 14" W

288° 42' 14" W

285° 42' 14" W

282° 42' 14" W

279° 42' 14" W

276° 42' 14" W

273° 42' 14" W

270° 42' 14" W

267° 42' 14" W

264° 42' 14" W

261° 42' 14" W

258° 42' 14" W

255° 42' 14" W

252° 42' 14" W

249° 42' 14" W

246° 42' 14" W

243° 42' 14" W

240° 42' 14" W

237° 42' 14" W

234° 42' 14" W

231° 42' 14" W

228° 42' 14" W

225° 42' 14" W

222° 42' 14" W

219° 42' 14" W

216° 42' 14" W

213° 42' 14" W

210° 42' 14" W

207° 42' 14" W

204° 42' 14" W

201° 42' 14" W

198° 42' 14" W

195° 42' 14" W

192° 42' 14" W

189° 42' 14" W

186° 42' 14" W

183° 42' 14" W

180° 42' 14" W

177° 42' 14" W

174° 42' 14" W

171° 42' 14" W

168° 42' 14" W

165° 42' 14" W

162° 42' 14" W

159° 42' 14" W

156° 42' 14" W

153° 42' 14" W

150° 42' 14" W

147° 42' 14" W

144° 42' 14" W

141° 42' 14" W

138° 42' 14" W

135° 42' 14" W

132° 42' 14" W

129° 42' 14" W

126° 42' 14" W

123° 42' 14" W

120° 42' 14" W

117° 42' 14" W

114° 42' 14" W

111° 42' 14" W

108° 42' 14" W

105° 42' 14" W

102° 42' 14" W

99° 42' 14" W

96° 42' 14" W

93° 42' 14" W

90° 42' 14" W

87° 42' 14" W

84° 42' 14" W

81° 42' 14" W

78° 42' 14" W

75° 42' 14" W

72° 42' 14" W

69° 42' 14" W

66° 42' 14" W

63° 42' 14" W

60° 42' 14" W

57° 42' 14" W

54° 42' 14" W

51° 42' 14" W

48° 42' 14" W

45° 42' 14" W

42° 42' 14" W

39° 42' 14" W

36° 42' 14" W

33° 42' 14" W

30° 42' 14" W

27° 42' 14" W

24° 42' 14" W

21° 42' 14" W

18° 42' 14" W

15° 42' 14" W

12° 42' 14" W

9° 42' 14" W

6° 42' 14" W

3° 42' 14" W

0° 42' 14" W

330° 42' 14" W

327° 42' 14" W

324° 42' 14" W

321° 42' 14" W

318° 42' 14" W

315° 42' 14" W

312° 42' 14" W

309° 42' 14" W

306° 42' 14" W

303° 42' 14" W

300° 42' 14" W

297° 42' 14" W

294° 42' 14" W

291° 42' 14" W

288° 42' 14" W

285° 42' 14" W

282° 42' 14" W

279° 42' 14" W

276° 42' 14" W

273° 42' 14" W

270° 42' 14" W

267° 42' 14" W

264° 42' 14" W

261° 42' 14" W

258° 42' 14" W

255° 42' 14" W

252° 42' 14" W

249° 42' 14" W

246° 42' 14" W

243° 42' 14" W

240° 42' 14" W

237° 42' 14" W

234° 42' 14" W

231° 42' 14" W

228° 42' 14" W

225° 42' 14" W

222° 42' 14" W

219° 42' 14" W

216° 42' 14" W

213° 42' 14" W

210° 42' 14" W

207° 42' 14" W

204° 42' 14" W

201° 42' 14" W

198° 42' 14" W

195° 42' 14" W

192° 42' 14" W

189° 42' 14" W

186° 42' 14" W

183° 42' 14" W

180° 42' 14" W

177° 42' 14" W

174° 42' 14" W

171° 42' 14" W

168° 42' 14" W

165° 42' 14" W

162° 42' 14" W

159° 42' 14" W

156° 42' 14" W

153° 42' 14" W

150° 42' 14" W

147° 42' 14" W

144° 42' 14" W

141° 42' 14" W

138° 42' 14" W

135° 42' 14" W

132° 42' 14" W

129° 42' 14" W

126° 42' 14" W

123° 42' 14" W

120° 42' 14" W

117° 42' 14" W

114° 42' 14" W

111° 42' 14" W

108° 42' 14" W

105° 42' 14" W

102° 42' 14" W

99° 42' 14" W

96° 42' 14" W

93° 42' 14" W

90° 42' 14" W

87° 42' 14" W

84° 42' 14" W

81° 42' 14" W

78° 42' 14" W

75° 42' 14" W

72° 42' 14" W

69° 42' 14" W

66° 42' 14" W

63° 42' 14" W

60° 42' 14" W

57° 42' 14" W

54° 42' 14" W

51° 42' 14" W

48° 42' 14" W

45° 42' 14" W

42° 42' 14" W

39° 42' 14" W

36° 42' 14" W

33° 42' 14" W

30° 42' 14" W

27° 42' 14" W

24° 42' 14" W

21° 42' 14" W

18° 42' 14" W

15° 42' 14" W

12° 42' 14" W

9° 42' 14" W

6° 42' 14" W

3° 42' 14" W

0° 42' 14" W

NOTE: BEARINGS SHOWN ON THIS PLAT ARE THE GRID BEARINGS OF EACH TANGENT TO THE NEAREST MINUTE.

LEGEND
DENOTES NO ACCESS

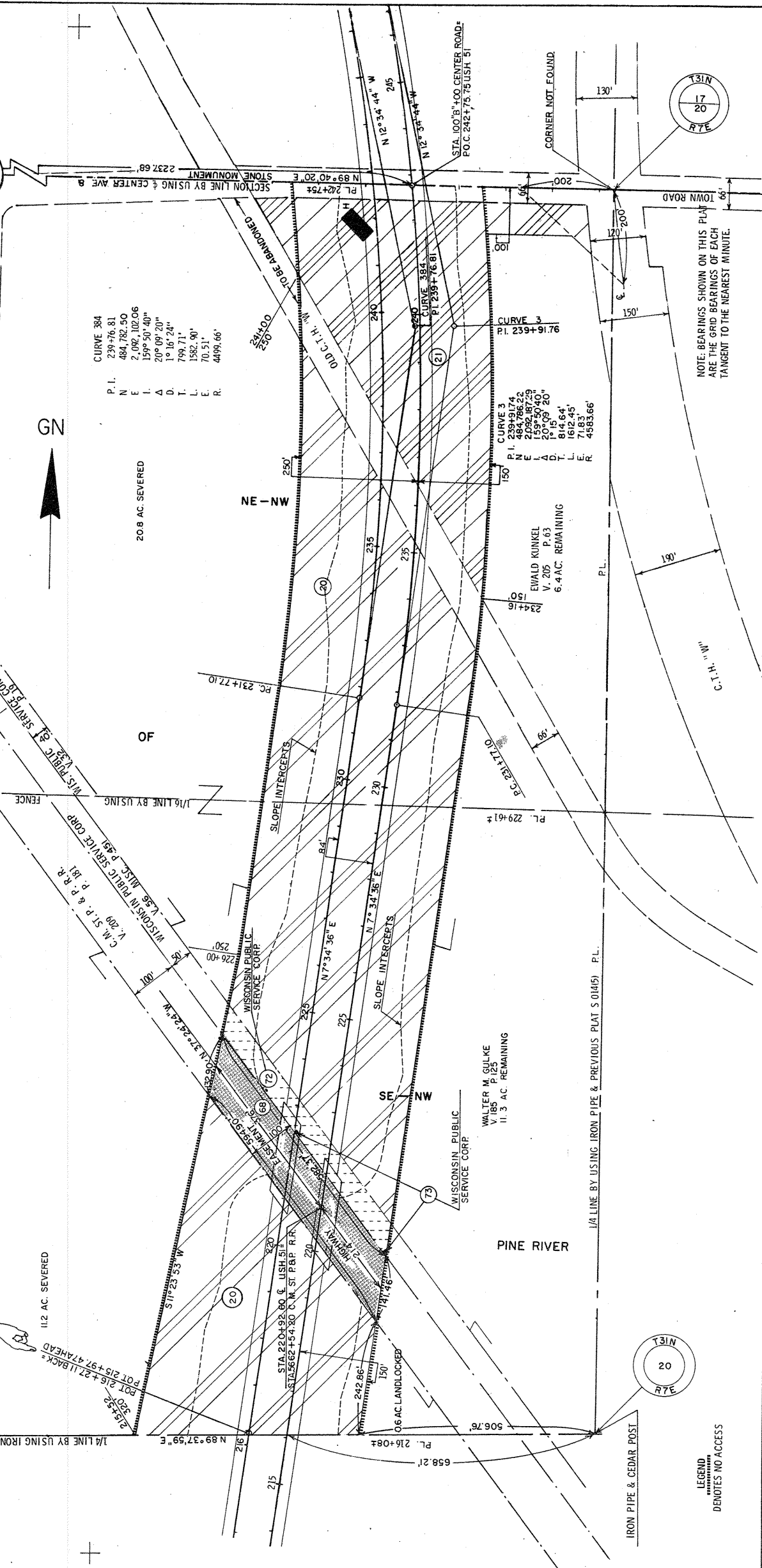
20
29
R7E

20
29
R7E

REVISION	DATE	BY	NO.
L-27-72			
9-25-72			
3-12-73			
7-24-73			
12-9-77			
6-9-87			

PROJECT ID: 1173-2-21
 SHEET NUMBER: 4.8
 FEDERAL PROJECT DESIGNATION: 4.8
 DATE: MARCH 8, 1971
 SCALE: 1" = 200'
 CONST. PROJECT: 0

Plot of Right of Way Required
 South County Line - Merrill
 Lincoln U.S.H. 51
 County



STONE MONUMENT

GN

EXISTING TOWN ROAD

EXISTING TOWN ROAD

EXISTING TOWN ROAD

EXISTING TOWN ROAD

112 AC. SEVERED

20.8 AC. SEVERED

0.6 AC. LANDLOCKED

0.6 AC. LANDLOCKED

0.6 AC. LANDLOCKED

0.6 AC. LANDLOCKED

0.6 AC. LANDLOCKED

0.6 AC. LANDLOCKED

0.6 AC. LANDLOCKED

0.6 AC. LANDLOCKED

0.6 AC. LANDLOCKED

0.6 AC. LANDLOCKED

0.6 AC. LANDLOCKED

0.6 AC. LANDLOCKED

0.6 AC. LANDLOCKED

0.6 AC. LANDLOCKED

0.6 AC. LANDLOCKED

0.6 AC. LANDLOCKED

0.6 AC. LANDLOCKED

0.6 AC. LANDLOCKED

0.6 AC. LANDLOCKED

0.6 AC. LANDLOCKED

0.6 AC. LANDLOCKED

0.6 AC. LANDLOCKED

0.6 AC. LANDLOCKED

0.6 AC. LANDLOCKED

0.6 AC. LANDLOCKED

0.6 AC. LANDLOCKED

0.6 AC. LANDLOCKED

0.6 AC. LANDLOCKED

0.6 AC. LANDLOCKED

0.6 AC. LANDLOCKED

0.6 AC. LANDLOCKED

0.6 AC. LANDLOCKED

0.6 AC. LANDLOCKED

0.6 AC. LANDLOCKED

0.6 AC. LANDLOCKED

0.6 AC. LANDLOCKED

0.6 AC. LANDLOCKED

0.6 AC. LANDLOCKED

0.6 AC. LANDLOCKED

0.6 AC. LANDLOCKED

0.6 AC. LANDLOCKED

0.6 AC. LANDLOCKED

0.6 AC. LANDLOCKED

0.6 AC. LANDLOCKED

0.6 AC. LANDLOCKED

0.6 AC. LANDLOCKED

0.6 AC. LANDLOCKED

0.6 AC. LANDLOCKED

0.6 AC. LANDLOCKED

0.6 AC. LANDLOCKED

0.6 AC. LANDLOCKED

0.6 AC. LANDLOCKED

0.6 AC. LANDLOCKED

0.6 AC. LANDLOCKED

0.6 AC. LANDLOCKED

0.6 AC. LANDLOCKED

0.6 AC. LANDLOCKED

0.6 AC. LANDLOCKED

0.6 AC. LANDLOCKED

0.6 AC. LANDLOCKED

0.6 AC. LANDLOCKED

0.6 AC. LANDLOCKED

0.6 AC. LANDLOCKED

0.6 AC. LANDLOCKED

0.6 AC. LANDLOCKED

0.6 AC. LANDLOCKED

0.6 AC. LANDLOCKED

0.6 AC. LANDLOCKED

0.6 AC. LANDLOCKED

0.6 AC. LANDLOCKED

0.6 AC. LANDLOCKED

0.6 AC. LANDLOCKED

0.6 AC. LANDLOCKED

0.6 AC. LANDLOCKED

0.6 AC. LANDLOCKED

0.6 AC. LANDLOCKED

0.6 AC. LANDLOCKED

0.6 AC. LANDLOCKED

0.6 AC. LANDLOCKED

0.6 AC. LANDLOCKED

0.6 AC. LANDLOCKED

0.6 AC. LANDLOCKED

0.6 AC. LANDLOCKED

0.6 AC. LANDLOCKED

0.6 AC. LANDLOCKED

0.6 AC. LANDLOCKED

0.6 AC. LANDLOCKED

0.6 AC. LANDLOCKED

0.6 AC. LANDLOCKED

0.6 AC. LANDLOCKED

0.6 AC. LANDLOCKED

0.6 AC. LANDLOCKED

0.6 AC. LANDLOCKED

0.6 AC. LANDLOCKED

0.6 AC. LANDLOCKED

0.6 AC. LANDLOCKED

0.6 AC. LANDLOCKED

0.6 AC. LANDLOCKED

0.6 AC. LANDLOCKED

0.6 AC. LANDLOCKED

0.6 AC. LANDLOCKED

0.6 AC. LANDLOCKED

0.6 AC. LANDLOCKED

0.6 AC. LANDLOCKED

0.6 AC. LANDLOCKED

0.6 AC. LANDLOCKED

0.6 AC. LANDLOCKED

0.6 AC. LANDLOCKED

0.6 AC. LANDLOCKED

0.6 AC. LANDLOCKED

0.6 AC. LANDLOCKED

0.6 AC. LANDLOCKED

0.6 AC. LANDLOCKED

0.6 AC. LANDLOCKED

0.6 AC. LANDLOCKED

0.6 AC. LANDLOCKED

0.6 AC. LANDLOCKED

0.6 AC. LANDLOCKED

0.6 AC. LANDLOCKED

0.6 AC. LANDLOCKED

0.6 AC. LANDLOCKED

0.6 AC. LANDLOCKED

0.6 AC. LANDLOCKED

0.6 AC. LANDLOCKED

0.6 AC. LANDLOCKED

0.6 AC. LANDLOCKED

0.6 AC. LANDLOCKED

0.6 AC. LANDLOCKED

0.6 AC. LANDLOCKED

0.6 AC. LANDLOCKED

0.6 AC. LANDLOCKED

0.6 AC. LANDLOCKED

0.6 AC. LANDLOCKED

0.6 AC. LANDLOCKED

0.6 AC. LANDLOCKED

0.6 AC. LANDLOCKED

0.6 AC. LANDLOCKED

0.6 AC. LANDLOCKED

0.6 AC. LANDLOCKED

0.6 AC. LANDLOCKED

0.6 AC. LANDLOCKED

0.6 AC. LANDLOCKED

0.6 AC. LANDLOCKED

0.6 AC. LANDLOCKED

0.6 AC. LANDLOCKED

0.6 AC. LANDLOCKED

0.6 AC. LANDLOCKED

0.6 AC. LANDLOCKED

0.6 AC. LANDLOCKED

0.6 AC. LANDLOCKED

0.6 AC. LANDLOCKED

0.6 AC. LANDLOCKED

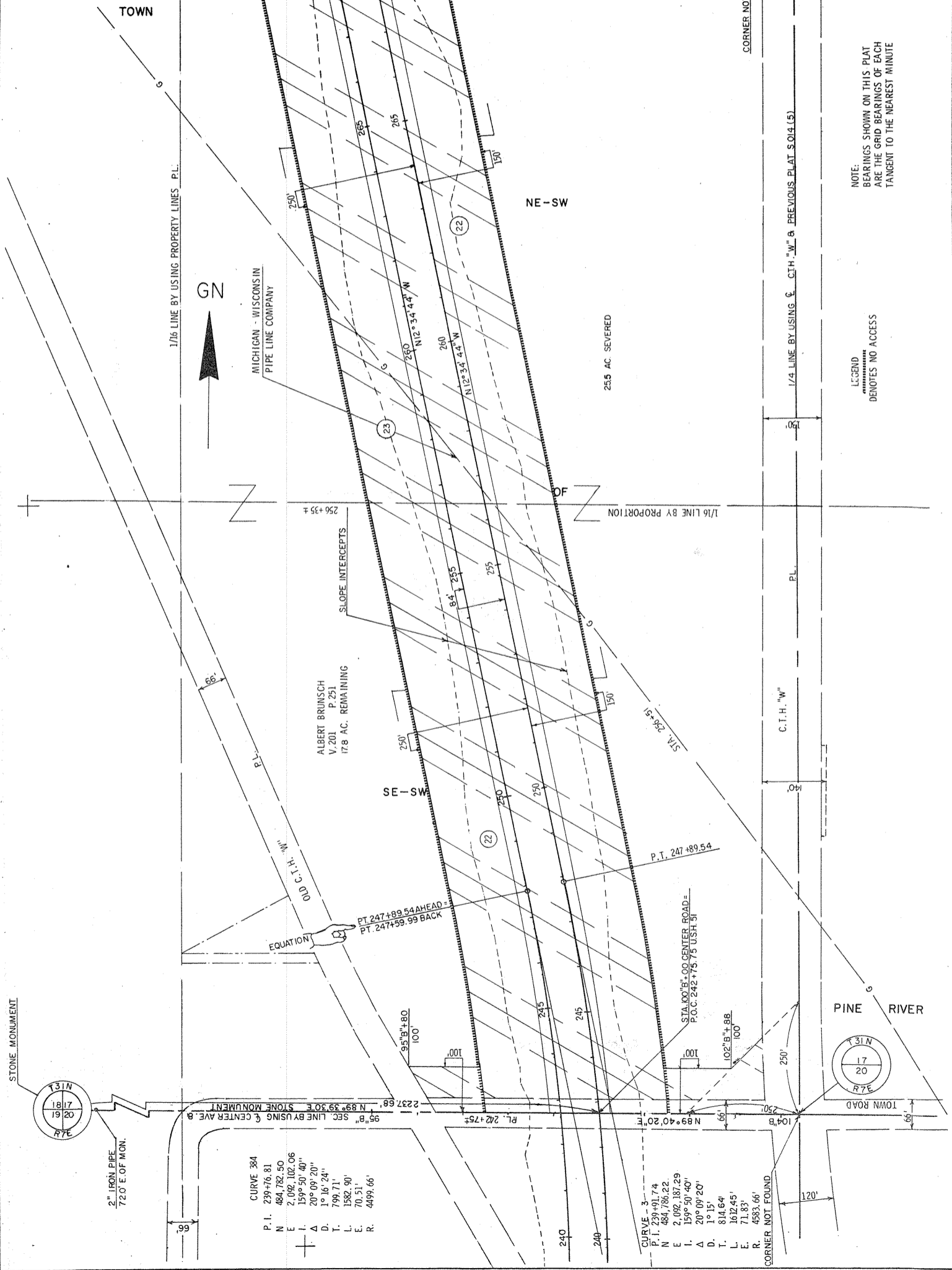
0.6 AC. LANDLOCKED

0.6 AC. LANDLOCKED

NOTE: BEARINGS SHOWN ON THIS PLAN ARE THE GRID BEARINGS OF EACH TANGENT TO THE NEAREST MINUTE.

LEGEND
 DENOTES NO ACCESS

REVISION	DATE	PROJECT ID	SHEET NUMBER	TOTAL SHEETS
1-27-72		1173-9-21	7	4,9
9-25-72		FEDERAL PROJECT DESIGNATION		
3-12-73				
7-24-73				
12-9-77				
6-9-87				
CONSTR. PROJECT				
Plat of Right of Way Required South County Line - Merrill Lincoln U.S.H. 51 County SCALE 1"=200' DATE MARCH 8, 1971				



CURVE 384
P.I. 239+76.81
N 484.782.50
E 2,092.102.06
I. 159° 30' 40"
A. 20° 09' 20"
D. 1° 16' 24"
T. 799.71'
L. 1582.90'
E. 70.51'
R. 4499.66'

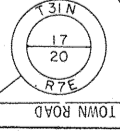
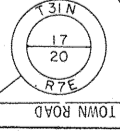
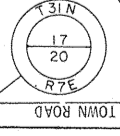
CURVE 3
P.I. 239+91.74
N 484.786.22
E 2,092.187.29
I. 159° 50' 40"
A. 20° 09' 20"
D. 1° 15'
T. 814.64'
L. 1612.45'
E. 71.83'
R. 4583.66'

NOTE:
BEARINGS SHOWN ON THIS PLAT
ARE THE GRID BEARINGS OF EACH
TANGENT TO THE NEAREST MINUTE

LEGEND
 DENOTES NO ACCESS

CORNER NOT FOUND

CORNER NOT FOUND



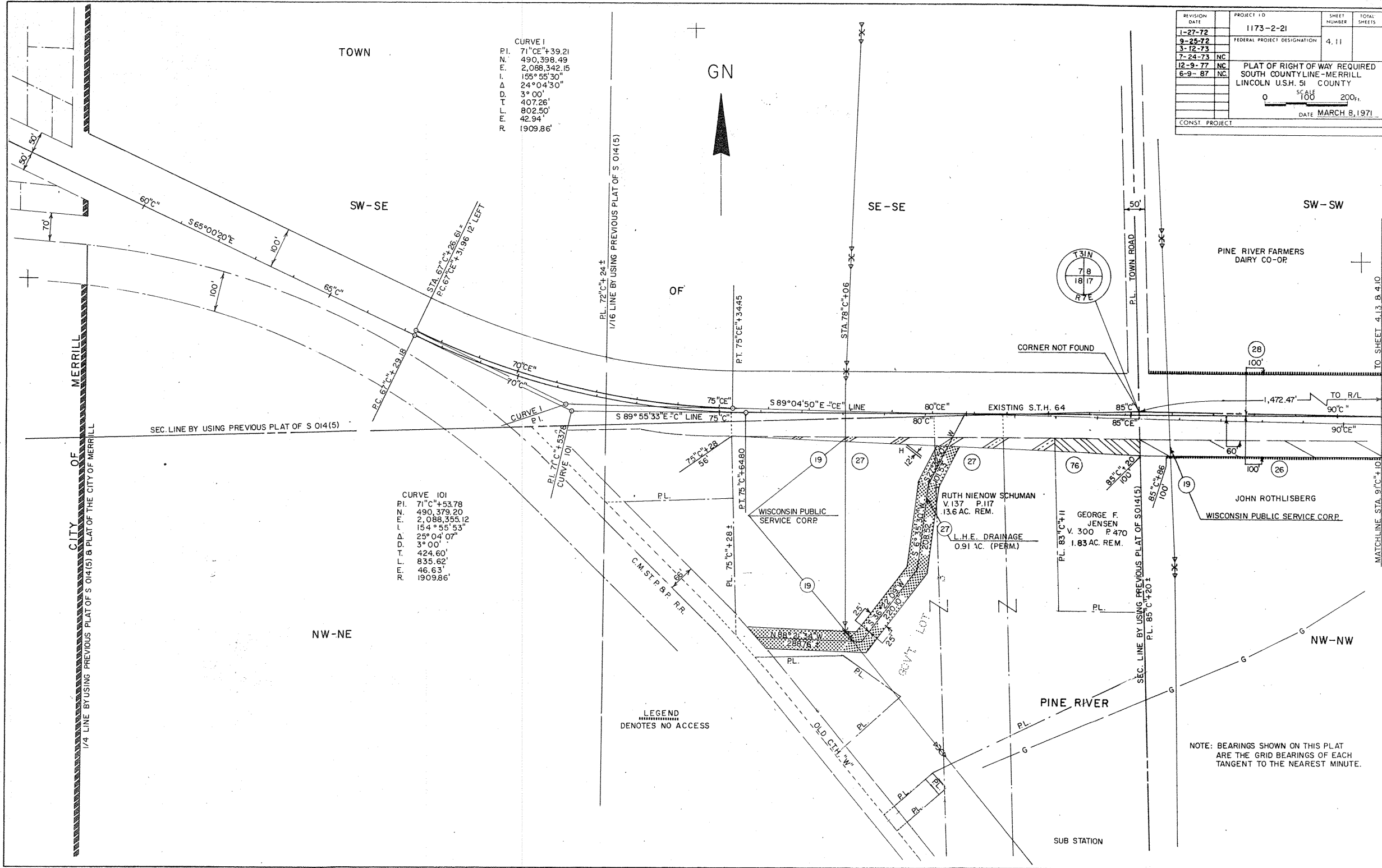
REVISION DATE	PROJECT I.D.	SHEET NUMBER	TOTAL SHEETS
1-27-72	1173-2-21		
9-25-72			
3-12-73	FEDERAL PROJECT DESIGNATION	4.11	
7-24-73			
12-9-77	NC		
6-9-87	NC		

PLAT OF RIGHT OF WAY REQUIRED
SOUTH COUNTYLINE - MERRILL
LINCOLN U.S.H. 51 COUNTY

SCALE 1" = 100' 200'

DATE MARCH 8, 1971

CONST. PROJECT



TOWN

CURVE I
 P.I. 71°CE+39.21
 N. 490,398.49
 E. 2,088,342.15
 I. 155°55'30"
 Δ 24°04'30"
 D 3°00'
 T 407.26'
 L 802.50'
 E 42.94'
 R 1909.86'

CURVE 101
 P.I. 71°C+53.78
 N. 490,379.20
 E. 2,088,355.12
 I. 154°55'53"
 Δ 25°04'07"
 D 3°00'
 T 424.60'
 L 835.62'
 E 46.63'
 R 1909.86'

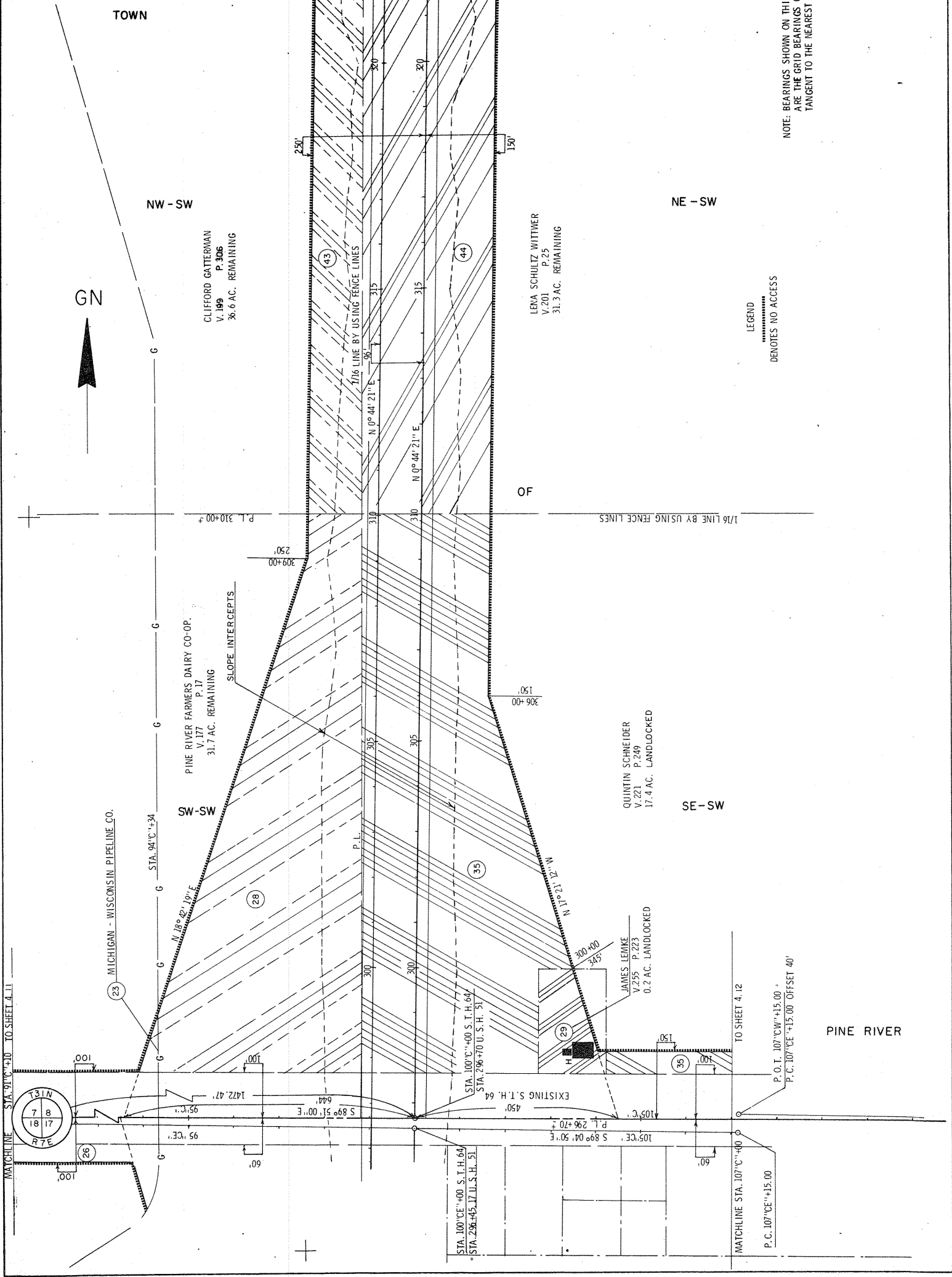
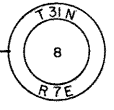
LEGEND
 DENOTES NO ACCESS

NOTE: BEARINGS SHOWN ON THIS PLAT ARE THE GRID BEARINGS OF EACH TANGENT TO THE NEAREST MINUTE.

TO SHEET 4.13 & 4.10
 MATCHLINE STA. 91°C+10

REVISION	DATE	PROJECT NO.	SHEET NUMBER	TOTAL SHEETS
L-27-72		1173-2-21	4.13	
3-13-74				
7-24-73				
12-9-77				
6-9-87				

FEDERAL PROJECT DESIGNATION
 PLAT OF RIGHT OF WAY REQUIRED
 SOUTH COUNTY LINE - MERRILL
 LINCOLN U.S.H. 51 COUNTY
 SCALE 1"=100'
 DATE MARCH 8, 1971



LEGEND
 DENOTES NO ACCESS

NOTE: BEARINGS SHOWN ON THIS PLAT ARE THE GRID BEARINGS OF EACH TANGENT TO THE NEAREST MINUTE

MATCHLINE STA. 91+00 TO SHEET 4.11

MATCHLINE STA. 107+00 TO SHEET 4.12

STA. 100+00 S.T.H. 64
 STA. 296+45 U.S.H. 51

P.O.T. 107+00 CW+15.00
 P.C. 107+00 CE+15.00 OFFSET 40'

PINE RIVER

MICHIGAN - WISCONSIN PIPELINE CO.

PINE RIVER FARMERS DAIRY CO-OP.

CLIFFORD GATTERMAN
 V. 199 P. 306
 36.6 AC. REMAINING

LENA SCHULTZ WITTMER
 V. 201 P. 25
 31.3 AC. REMAINING

QUAINTIN SCHNEIDER
 V. 221 P. 249
 17.4 AC. LANDLOCKED

JAMES LEMKE
 V. 255 P. 223
 0.2 AC. LANDLOCKED

1/4 LINE BY USING FENCE LINES & PREVIOUS PLAT OF SD(45)

1/16 LINE BY USING FENCE LINES

1/16 LINE BY USING FENCE LINES

SLOPE INTERCEPTS

TOWN

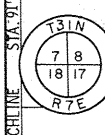
NW - SW

NE - SW

SW - SW

SE - SW

OF



PROJECT NO.	1173-2-21	SHEET NO.	4, 14	TOTAL SHEETS	
REVISION	DATE	FEDERAL PROJECT DESIGNATION			
1-27-72					
3-12-73					
7-28-73					
12-9-77					
6-9-87					
		PLAT OF RIGHT OF WAY REQUIRED			
		South County Line - Merrill			
		U. S. H. 51 County			
		Lincoln			
		SCALE	1" = 200'		
		DATE	MARCH 8, 1971		
		CONST. PROJECT			

TOWN

CURVE 596
 P. I. 360+98.75
 N 496.806.66
 E 2,091.201.84
 L 133° 16' 28"
 Δ 46° 43' 32"
 D 1° 32' 19"
 T. 1608.53'
 L. 3096.76'
 E. 332.57'
 R. 3723.72'

EMMA PETERSON
 V. 752
 V. 727
 36.6 AC. REMAINING

CURVE 5
 P. I. 361+40.21
 N 496.846.89
 E 2,091.298.37
 L 133° 16' 28"
 Δ 46° 43' 32"
 D 1° 30'
 T. 1650.00'
 L. 3115.05'
 E. 341.14'
 R. 3819.72'

WALTER H. SCHWOCH
 V. 197
 P. 55
 184.2 AC. REMAINING

WESLEY R. DONNER
 V. 107
 P. 29
 31.8 AC. REMAINING

NW-NW

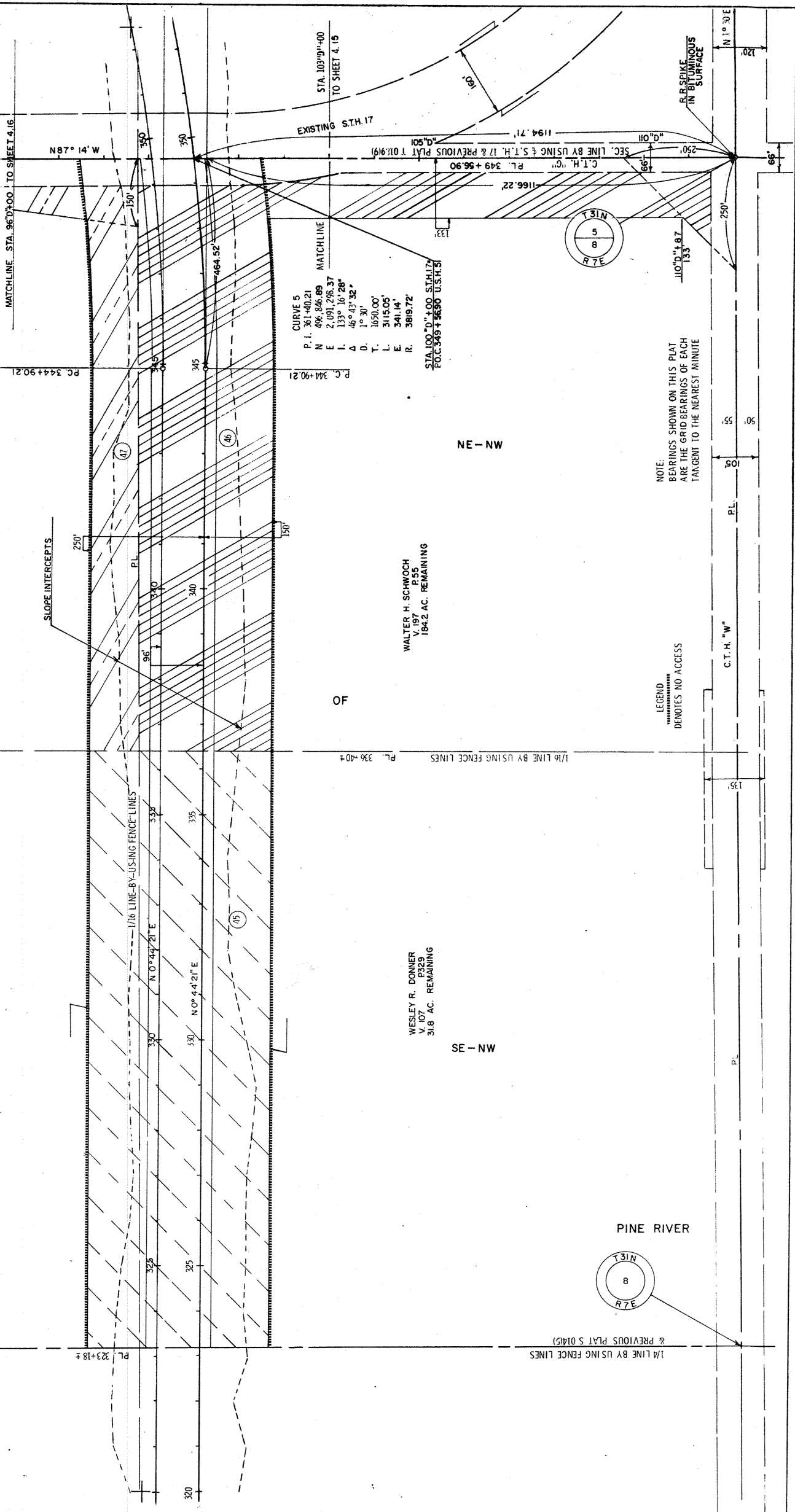
NE-NW

SW-NW

SE-NW

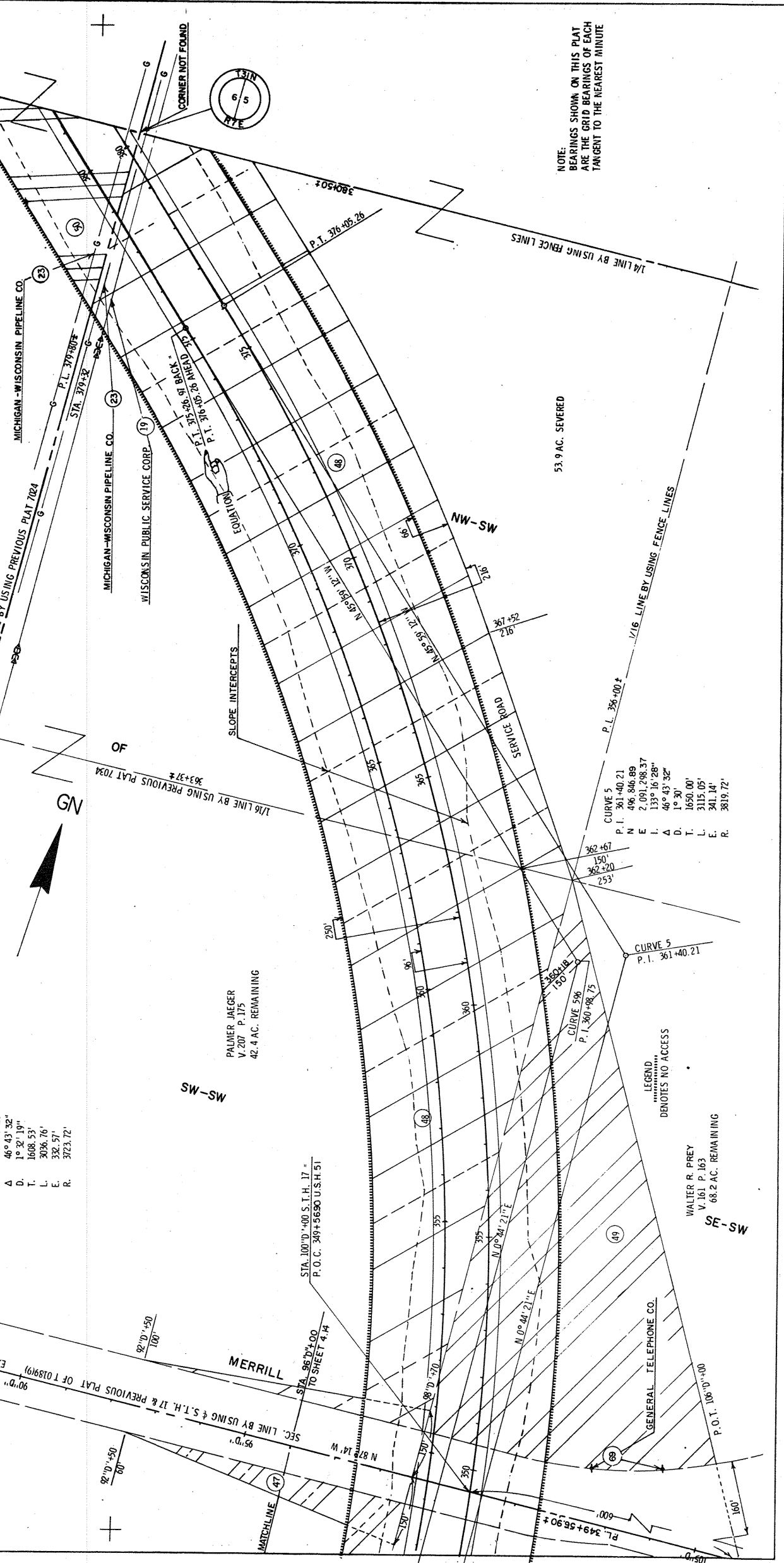
GN

36.1 AC. LANDLOCKED



REVISION	DATE	PROJECT ID	SHEET NUMBER	TOTAL SHEETS
1-27-72		1173-2-21	4.16	
9-25-72		FEDERAL PROJECT DESIGNATION		
3-18-73				
7-24-73				
12-9-77				
6-9-87				

PLAT OF RIGHT OF WAY REQUIRED
SOUTH COUNTY LINE-MERRILL
U.S.H. 51
LINCOLN COUNTY
SCALE 200'
DATE MARCH 9, 1971
CONSULT PROJECT



NOTE:
BEARINGS SHOWN ON THIS PLAT
ARE THE GRID BEARINGS OF EACH
TANGENT TO THE NEAREST MINUTE

CURVE 596
P. I. 360+98.75
N 49° 43' 32"
E 133° 16' 28"
L 2,091.201.84
D. 1° 2' 19"
T. 1608.53'
L. 3036.76'
E. 332.57'
R. 3723.72'

CURVE 5
P. I. 361+40.21
N 49° 43' 32"
E 133° 16' 28"
L 2,091.201.84
D. 1° 2' 19"
T. 1650.00'
L. 3115.05'
E. 341.14'
R. 3819.72'

LEGEND
DENOTES NO ACCESS

WALTER R. PREY
V. 161 P. 163
68.2 AC. REMAINING

PALMER JAEGER
V. 207 P. 175
42.4 AC. REMAINING

MERRILL

STA. 100+00 S.T.H. 17 =
P.O.C. 349+5690 U.S.H. 51

STA. 367+00
TO SHEET 4.14

GENERAL TELEPHONE CO.

P.O.T. 106+00

53.9 AC. SEVERED

1/16 LINE BY USING FENCE LINES

1/16 LINE BY USING FENCE LINES

SEC. LINE BY USING PREVIOUS PLAT 704

1/16 LINE BY USING PREVIOUS PLAT 704

GEORGE PETERSON ET AL.
V. 221 P. 211

MICHIGAN-WISCONSIN PIPELINE CO.

MICHIGAN-WISCONSIN PIPELINE CO.

WISCONSIN PUBLIC SERVICE CORP.

SLOPE INTERCEPTS

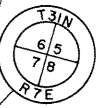
SERVICED ROAD

NE-SF

NW-SW

SW-SW

SE-SW



CORNER NOT FOUND

MATCHLINE

SEC. LINE BY USING S.T.H. 17 & PREVIOUS PLAT OF T0189(9)

SEC. LINE BY USING S.T.H. 17 & PREVIOUS PLAT OF T0189(9)

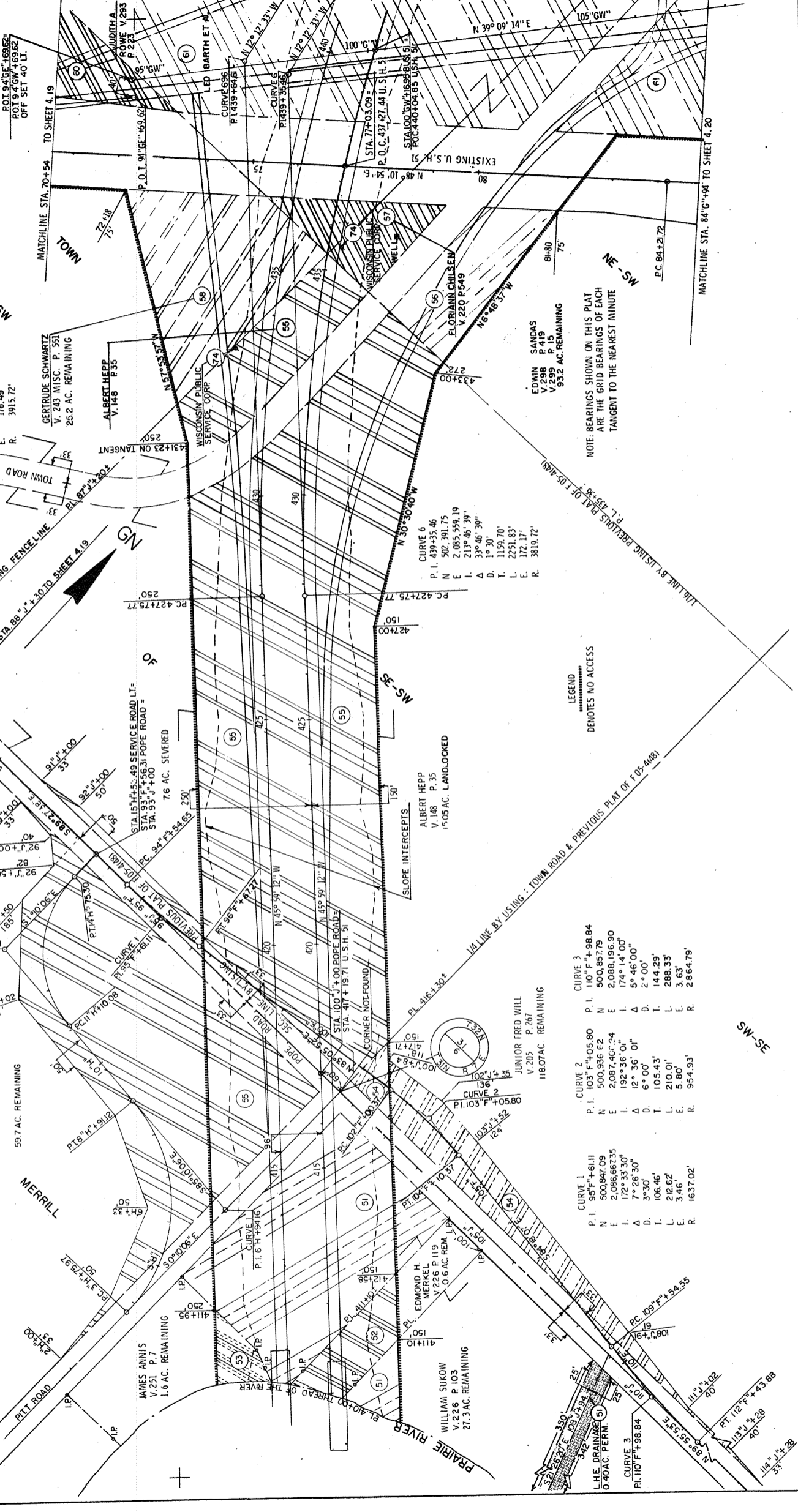
SEC. LINE BY USING S.T.H. 17 & PREVIOUS PLAT OF T0189(9)

SEC. LINE BY USING S.T.H. 17 & PREVIOUS PLAT OF T0189(9)

SEC. LINE BY USING S.T.H. 17 & PREVIOUS PLAT OF T0189(9)

REVISION	DATE	PROJECT ID	SHEET NUMBER	TOTAL SHEETS
1-27-72		1173-2-21	4.18	
2-28-73				
3-12-73				
4-24-73				
5-27-73				
6-9-87				

PLAT OF RIGHT OF WAY REQUIRED
SOUTH COUNTY LINE - MERRILL
LINCOLN U.S.H. 51
COUNTY
L.I. 100
DATE MARCH 8, 1971



CURVE 1
P.I. 611°+94.16
L. 89° 00'
D. 23° 00'
T. 318.19'
L. 515.15'
E. 123.74'
R. 347.25'

CURVE 2
P.I. 131°+34.38
L. 99° 00'
D. 23° 00'
T. 224.30'
L. 365.22'
E. 86.10'
R. 249.11'

CURVE 3
P.I. 103°+405.80
L. 500.936'±2
E. 2,088,196.90
D. 192° 36' 01"
T. 7° 36' 01"
L. 6° 00'
D. 105.43'
L. 210.01'
E. 5.80'
R. 954.93'

CURVE 4
P.I. 95°+611.11
L. 500.947.09
E. 2,096,662.35
D. 172° 33' 30"
T. 7° 26' 30"
L. 3° 30'
D. 106.46'
L. 212.62'
E. 3.46'
R. 1637.02'

CURVE 5
P.I. 110°+98.84
L. 500.857.79
E. 2,088,196.90
D. 174° 14' 00"
T. 5° 46' 00"
L. 2° 00'
D. 144.29'
L. 288.35'
E. 3.63'
R. 2,864.79'

CURVE 6
P.I. 439+35.46
L. 502.391.75
E. 2,085,559.19
D. 213° 46' 39"
T. 33° 46' 39"
L. 1° 30'
D. 119.70'
L. 2251.83'
E. 172.17'
R. 3819.72'

CURVE 7
P.I. 439+35.46
L. 502.391.75
E. 2,085,559.19
D. 213° 46' 39"
T. 33° 46' 39"
L. 1° 30'
D. 119.70'
L. 2251.83'
E. 172.17'
R. 3819.72'

CURVE 8
P.I. 103°+405.80
L. 500.936'±2
E. 2,088,196.90
D. 192° 36' 01"
T. 7° 36' 01"
L. 6° 00'
D. 105.43'
L. 210.01'
E. 5.80'
R. 954.93'

CURVE 9
P.I. 110°+98.84
L. 500.857.79
E. 2,088,196.90
D. 174° 14' 00"
T. 5° 46' 00"
L. 2° 00'
D. 144.29'
L. 288.35'
E. 3.63'
R. 2,864.79'

CURVE 10
P.I. 95°+611.11
L. 500.947.09
E. 2,096,662.35
D. 172° 33' 30"
T. 7° 26' 30"
L. 3° 30'
D. 106.46'
L. 212.62'
E. 3.46'
R. 1637.02'

CURVE 11
P.I. 611°+94.16
L. 89° 00'
D. 23° 00'
T. 318.19'
L. 515.15'
E. 123.74'
R. 347.25'

CURVE 12
P.I. 131°+34.38
L. 99° 00'
D. 23° 00'
T. 224.30'
L. 365.22'
E. 86.10'
R. 249.11'

CURVE 13
P.I. 103°+405.80
L. 500.936'±2
E. 2,088,196.90
D. 192° 36' 01"
T. 7° 36' 01"
L. 6° 00'
D. 105.43'
L. 210.01'
E. 5.80'
R. 954.93'

CURVE 14
P.I. 95°+611.11
L. 500.947.09
E. 2,096,662.35
D. 172° 33' 30"
T. 7° 26' 30"
L. 3° 30'
D. 106.46'
L. 212.62'
E. 3.46'
R. 1637.02'

CURVE 15
P.I. 110°+98.84
L. 500.857.79
E. 2,088,196.90
D. 174° 14' 00"
T. 5° 46' 00"
L. 2° 00'
D. 144.29'
L. 288.35'
E. 3.63'
R. 2,864.79'

CURVE 16
P.I. 439+35.46
L. 502.391.75
E. 2,085,559.19
D. 213° 46' 39"
T. 33° 46' 39"
L. 1° 30'
D. 119.70'
L. 2251.83'
E. 172.17'
R. 3819.72'

CURVE 17
P.I. 439+35.46
L. 502.391.75
E. 2,085,559.19
D. 213° 46' 39"
T. 33° 46' 39"
L. 1° 30'
D. 119.70'
L. 2251.83'
E. 172.17'
R. 3819.72'

CURVE 18
P.I. 103°+405.80
L. 500.936'±2
E. 2,088,196.90
D. 192° 36' 01"
T. 7° 36' 01"
L. 6° 00'
D. 105.43'
L. 210.01'
E. 5.80'
R. 954.93'

CURVE 19
P.I. 110°+98.84
L. 500.857.79
E. 2,088,196.90
D. 174° 14' 00"
T. 5° 46' 00"
L. 2° 00'
D. 144.29'
L. 288.35'
E. 3.63'
R. 2,864.79'

NOTE: BEARINGS SHOWN ON THIS PLAT ARE THE GRID BEARINGS OF EACH TANGENT TO THE NEAREST MINUTE

LEGEND
..... DENOTES NO ACCESS

SW-SW

SW-SE

1/16 LINE BY USING FENCE LINE
MATCH LINE STA. 88+1.30 TO SHEET 4.19

1/16 LINE BY USING FENCE LINE
MATCH LINE STA. 84+0.94 TO SHEET 4.20

1/16 LINE BY USING FENCE LINE
MATCH LINE STA. 88+1.30 TO SHEET 4.19

1/16 LINE BY USING FENCE LINE
MATCH LINE STA. 84+0.94 TO SHEET 4.20

1/16 LINE BY USING FENCE LINE
MATCH LINE STA. 88+1.30 TO SHEET 4.19

1/16 LINE BY USING FENCE LINE
MATCH LINE STA. 84+0.94 TO SHEET 4.20

1/16 LINE BY USING FENCE LINE
MATCH LINE STA. 88+1.30 TO SHEET 4.19

1/16 LINE BY USING FENCE LINE
MATCH LINE STA. 84+0.94 TO SHEET 4.20

1/16 LINE BY USING FENCE LINE
MATCH LINE STA. 88+1.30 TO SHEET 4.19

1/16 LINE BY USING FENCE LINE
MATCH LINE STA. 84+0.94 TO SHEET 4.20

1/16 LINE BY USING FENCE LINE
MATCH LINE STA. 88+1.30 TO SHEET 4.19

1/16 LINE BY USING FENCE LINE
MATCH LINE STA. 84+0.94 TO SHEET 4.20

1/16 LINE BY USING FENCE LINE
MATCH LINE STA. 88+1.30 TO SHEET 4.19

1/16 LINE BY USING FENCE LINE
MATCH LINE STA. 84+0.94 TO SHEET 4.20

1/16 LINE BY USING FENCE LINE
MATCH LINE STA. 88+1.30 TO SHEET 4.19

1/16 LINE BY USING FENCE LINE
MATCH LINE STA. 84+0.94 TO SHEET 4.20

1/16 LINE BY USING FENCE LINE
MATCH LINE STA. 88+1.30 TO SHEET 4.19

1/16 LINE BY USING FENCE LINE
MATCH LINE STA. 84+0.94 TO SHEET 4.20

1/16 LINE BY USING FENCE LINE
MATCH LINE STA. 88+1.30 TO SHEET 4.19

1/16 LINE BY USING FENCE LINE
MATCH LINE STA. 84+0.94 TO SHEET 4.20

1/16 LINE BY USING FENCE LINE
MATCH LINE STA. 88+1.30 TO SHEET 4.19

1/16 LINE BY USING FENCE LINE
MATCH LINE STA. 84+0.94 TO SHEET 4.20

1/16 LINE BY USING FENCE LINE
MATCH LINE STA. 88+1.30 TO SHEET 4.19

1/16 LINE BY USING FENCE LINE
MATCH LINE STA. 84+0.94 TO SHEET 4.20

1/16 LINE BY USING FENCE LINE
MATCH LINE STA. 88+1.30 TO SHEET 4.19

1/16 LINE BY USING FENCE LINE
MATCH LINE STA. 84+0.94 TO SHEET 4.20

1/16 LINE BY USING FENCE LINE
MATCH LINE STA. 88+1.30 TO SHEET 4.19

1/16 LINE BY USING FENCE LINE
MATCH LINE STA. 84+0.94 TO SHEET 4.20

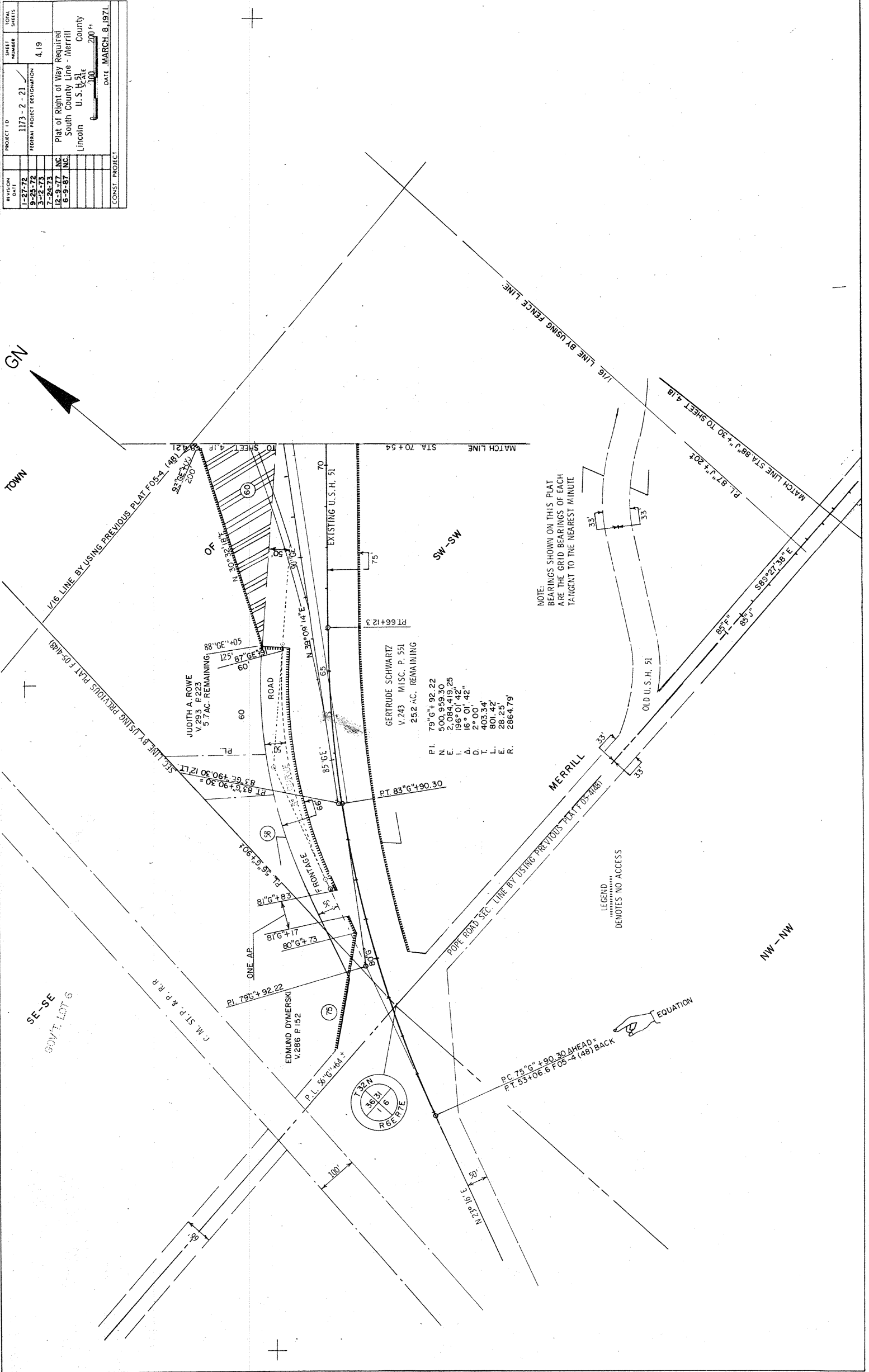
1/16 LINE BY USING FENCE LINE
MATCH LINE STA. 88+1.30 TO SHEET 4.19

1/16 LINE BY USING FENCE LINE
MATCH LINE STA. 84+0.94 TO SHEET 4.20

1/16 LINE BY USING FENCE LINE
MATCH LINE STA. 88+1.30 TO SHEET 4.19

1/16 LINE BY USING FENCE LINE
MATCH LINE STA. 84+0.94 TO SHEET 4.20

REVISION	DATE	PROJECT ID	SHEET NUMBER	TOTAL SHEETS
1-27-72		1173-2-21	4,19	
9-28-72		FEDERAL PROJECT DESIGNATION		
3-2-73				
7-24-73				
12-9-77		Plat of Right of Way Required		
6-9-87		South County Line - Merrill		
		Lincoln U.S.H. 51		
		County		
		SCALE		
		1" = 200'		
		DATE		
		MARCH 8, 1974		
		CONSTR. PROJECT		



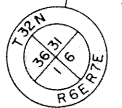
NOTE:
BEARINGS SHOWN ON THIS PLAT
ARE THE GRID BEARINGS OF EACH
TANGENT TO THE NEAREST MINUTE

GERTRUDE SCHWARTZ
V.243 MISC. P. 551
252 AC. REMAINING

P.I. 79°16'42.22
500,959.30
2,084,419.25
186°01'42"
26,001.42"
403.34
50.22
28.25'
2864.79'

LEGEND
DENOTES NO ACCESS

EQUATION



PC 75°16'42.22 AHEAD =
PT. 53406.8 F05-4 (48) BACK

SE-SE
GOVT. LOT 6

NW-NW

C.M. ST. P. & P. R.

EDMUND DYMERSKI
V.286 P.152

MERRILL

SW-SW

TOWN

GN

REVISION	DATE	PROJECT ID	SHEET NUMBER	TOTAL SHEETS
1-27-72		1173-2-21	4,19	
9-28-72		FEDERAL PROJECT DESIGNATION		
3-2-73				
7-24-73				
12-9-77		Plat of Right of Way Required		
6-9-87		South County Line - Merrill		
		Lincoln U.S.H. 51		
		County		
		SCALE		
		1" = 200'		
		DATE		
		MARCH 8, 1974		
		CONSTR. PROJECT		

