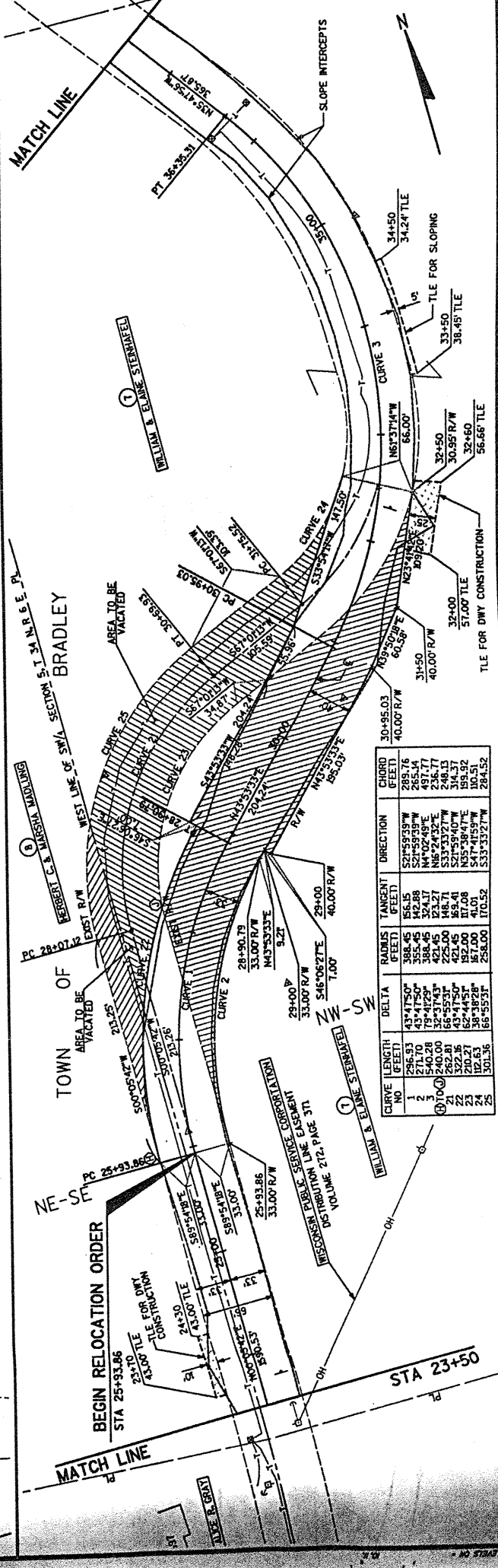


TOWN OF BRADLEY  
 JERRY & ANN BARTZ  
 WEST LINE OF SW/4 SECTION 5, T 34 N, R 6 E  
 SLOPE INTERCEPTS  
 TILE FOR SLOPING  
 EXIST R/W  
 GENERAL TELEPHONE COMPANY OF WISCONSIN  
 UTILITY EASEMENT  
 VOLUME 272, PAGE 419  
 DOCUMENT 24631



CURVE NO	LENGTH (FEET)	DELTA	RADIUS (FEET)	TANGENT (FEET)	DIRECTION	CHORD (FEET)
1	296.93	43°47'50"	388.45	156.15	S24°59'39"W	285.76
2	217.10	43°47'50"	388.45	156.15	N41°00'49"E	497.71
3	240.00	32°37'43"	421.45	173.27	N6°24'32"E	236.71
4	262.81	66°55'31"	225.00	148.71	S33°53'27"W	246.13
5	322.16	43°47'50"	421.45	173.27	S21°59'40"W	314.37
6	210.27	58°48'28"	151.00	101.01	S47°45'59"W	162.51
7	301.36	66°55'31"	258.00	170.52	S33°53'27"W	284.52

STATE PROJECT NUMBER  
 PLAN AND PROFILE  
 SUNSET POINT ROAD  
 TOWN OF BRADLEY  
 LINCOLN CO.

SHEET NO.  
 51

CURVE 2  
 D=252173.3"  
 T=448.71  
 R=225.00  
 L=262.82

HERBERT C. & MARSHA MADLON  
 P1 STA 29+45.83  
 B.M. 4

CURVE 1  
 D=144500"  
 T=158.65  
 R=128.50  
 L=296.95

P1 STA 27+50.00  
 B.M. 3

ROBIN S. & ALICE B. GRAY  
 B.M. 3

WISCONSIN PUBLIC SERVICE CORPORATION  
 DISTRIBUTION LINE EASEMENT  
 VOLUME 272, PAGE 371

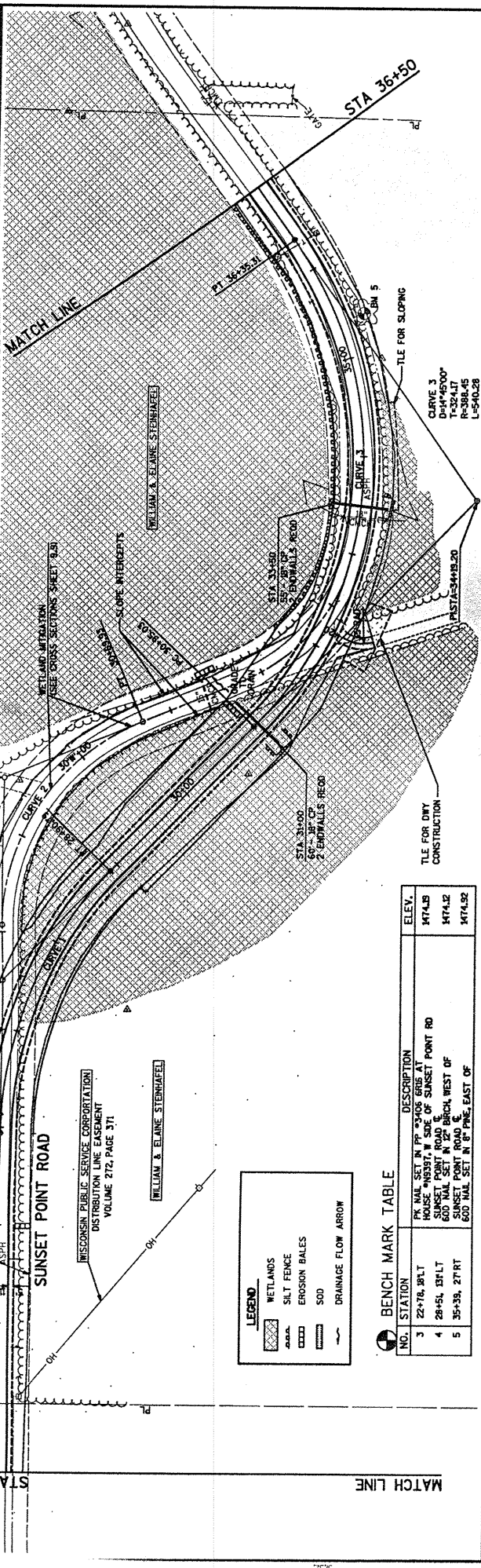
WILLIAM & ELAINE STERNHAFFEL

WETLANDS  
 SILT FENCE  
 EROSION BALES  
 SOD  
 DRAINAGE FLOW ARROW

WETLAND MITIGATION  
 TREE CROSS SECTIONS SHEET 5/31

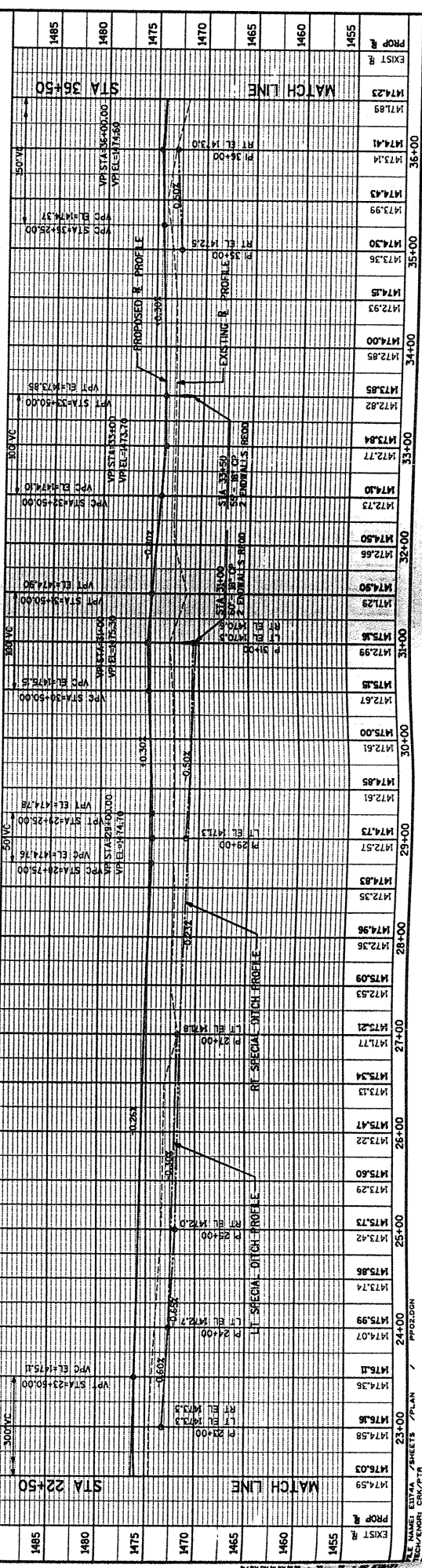
WETLANDS  
 SILT FENCE  
 EROSION BALES  
 SOD  
 DRAINAGE FLOW ARROW

WETLANDS  
 SILT FENCE  
 EROSION BALES  
 SOD  
 DRAINAGE FLOW ARROW



**BENCH MARK TABLE**

NO.	STATION	DESCRIPTION	ELEV.
3	22+78.381T	PK NAIL SET IN PP 2x4x8 GRB AT ROUSE #10337, W SIDE OF SUNSET POINT RD	4174.05
4	28+51.181LT	600 NAIL SET IN 2x2 BRCH, WEST OF SUNSET POINT ROAD	4174.42
5	35+33, 27+RT	600 NAIL SET IN 8" PINE, EAST OF SUNSET POINT ROAD	4174.92



PROP #	EXIST #	STATION	ELEVATION
1485	1485	22+50	4174.59
1485	1485	23+00	4174.58
1485	1485	24+00	4174.07
1485	1485	24+50	4173.74
1485	1485	25+00	4173.86
1485	1485	25+50	4173.73
1485	1485	26+00	4173.29
1485	1485	26+50	4173.60
1485	1485	27+00	4173.22
1485	1485	27+50	4173.47
1485	1485	28+00	4173.33
1485	1485	28+50	4173.54
1485	1485	29+00	4173.17
1485	1485	29+50	4172.57
1485	1485	30+00	4172.51
1485	1485	30+50	4174.85
1485	1485	31+00	4175.00
1485	1485	31+50	4172.67
1485	1485	32+00	4173.85
1485	1485	32+50	4172.66
1485	1485	33+00	4172.73
1485	1485	33+50	4172.77
1485	1485	34+00	4173.84
1485	1485	34+50	4172.82
1485	1485	35+00	4173.85
1485	1485	35+50	4172.93
1485	1485	36+00	4173.56
1485	1485	36+50	4173.99
1485	1485	37+00	4174.43
1485	1485	37+50	4173.14
1485	1485	38+00	4174.41
1485	1485	38+50	4174.89
1485	1485	39+00	4174.23
1485	1485	39+50	4174.50
1485	1485	40+00	4174.64
1485	1485	40+50	4174.50
1485	1485	41+00	4174.30
1485	1485	41+50	4174.10
1485	1485	42+00	4172.77
1485	1485	42+50	4172.73
1485	1485	43+00	4172.73
1485	1485	43+50	4172.66
1485	1485	44+00	4172.66
1485	1485	44+50	4172.66
1485	1485	45+00	4172.66
1485	1485	45+50	4172.66
1485	1485	46+00	4172.66
1485	1485	46+50	4172.66
1485	1485	47+00	4172.66
1485	1485	47+50	4172.66
1485	1485	48+00	4172.66
1485	1485	48+50	4172.66
1485	1485	49+00	4172.66
1485	1485	49+50	4172.66
1485	1485	50+00	4172.66