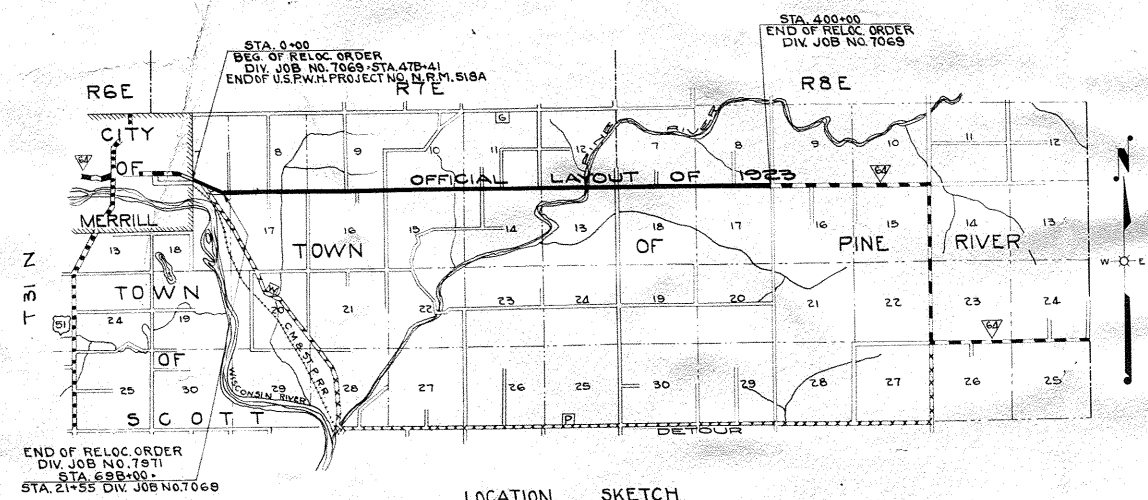
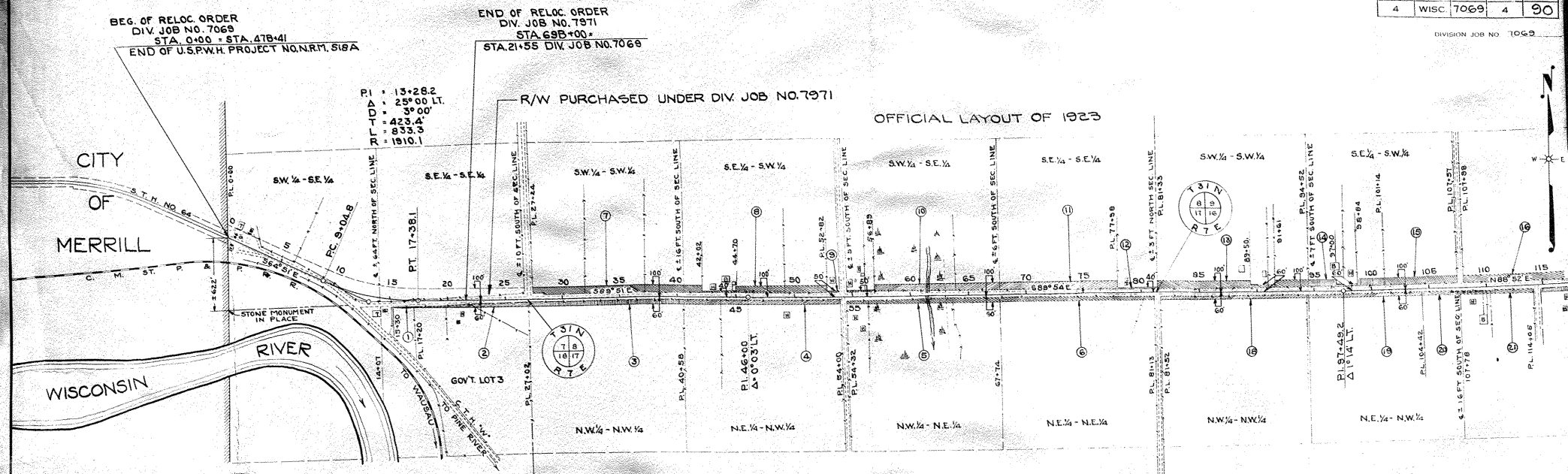


FED. ROAD DIST. NO.	STATE	STATE PROJ. NO.	SHEET NO.	TOTAL SHEETS
4	WISC	7069	4	90

DIVISION JOB NO. 7069



END OF RELOC. ORDER
DIV. JOB NO. 7069
STA. 21+55 DIV. JOB NO. 7069

LOCATION SKETCH
SCALE 0 1 2
MILES

DRAWN BY W.V.G. AND C.W.G.
COMPUTED BY C.W.G.
CHECKED BY C.E.H.

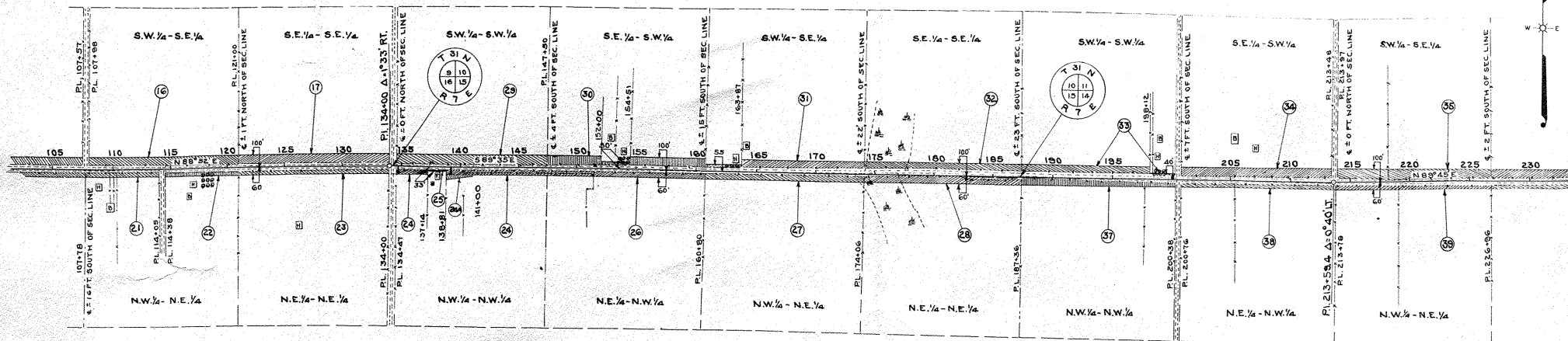
REVISED BY MMH FEB. 17, 1939
REVISED 7/6/1938
BY W.V.G.

PLAT OF RIGHT OF WAY REQUIRED
DIVISION JOB NO. 7069
MERRILL — ANTIGO ROAD
S.T.H. NO. 64 LINCOLN COUNTY
SCALE
0 1 2 3 4 5 6

FED. ROAD DIST. NO.	STATE	PROJECT NO.	SHEET NO.	TOTAL SHEETS
4	WIS.	7069	5	90

DIVISION JOB NO. 7069

OFFICIAL LAYOUT OF 1933



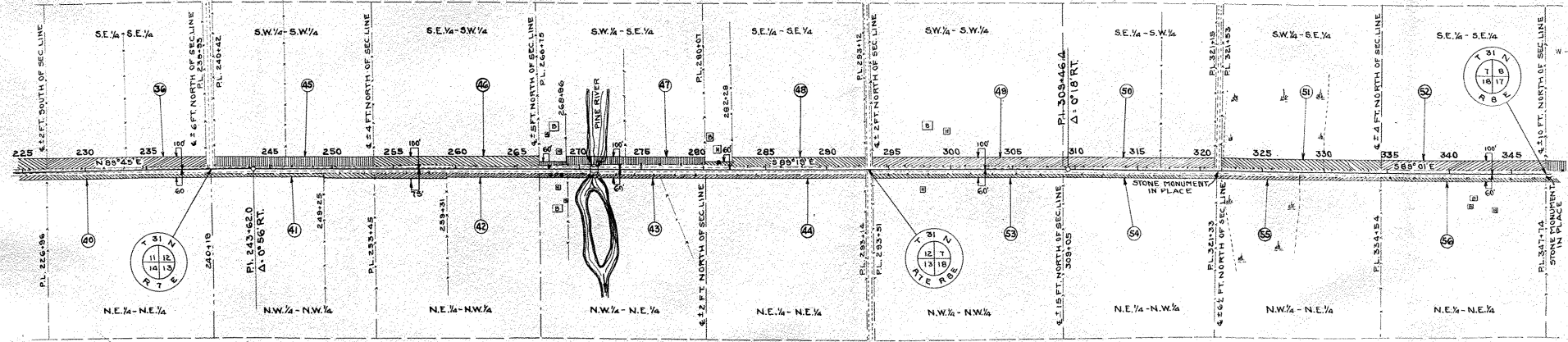
REVISED BY MMH FEB. 17, 1939
 REVISED 7/6/1938
 BY W.V.G.

PLAT OF RIGHT OF WAY REQUIRED
 DIVISION JOB NO. 7069
 MERRILL — ANTIGO ROAD
 S.T.H. NO. 64 LINCOLN COUNTY
 SCALE
 0 1 2 3 4 5 6

REV. ROAD DIST. NO.	STATE ROAD NO.	SHEET NO.	TOTAL SHEETS
4	WISC. 7069	6	90

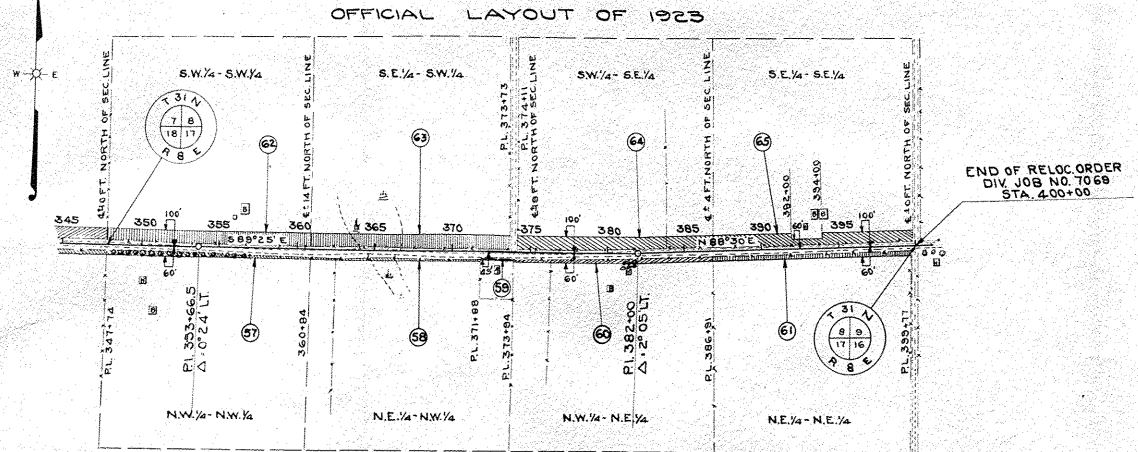
DIVISION JOB NO. 7069

OFFICIAL LAYOUT OF 1923



REVISED BY MMH FEB. 17, 1939
 REVISED 7/6/1938
 BY W.V.G.

PLAT OF RIGHT OF WAY REQUIRED
 DIVISION JOB NO. 7069
 MERRILL - ANTIGO ROAD
 ST.H. NO. 64 LINCOLN COUNTY
 SCALE
 0 1 2 3 4 5 6



PAR	OWNER	ADDRESS	DESCRIPTION	ACRES PURCHASED			TOTAL	PAR
				MARSH	UNIMPROVED	IMPROVED		
1	AUGUST GUTZMER AND EDNA HIS WIFE		PART OF GOVT. LOT 3 SEC. 18 T31N RTE	0.00	0.00	0.06	0.06	1
2	FRED NIENOW AND AUGUSTA "		PART OF GOVT. LOT 3 SEC. 18 T31N RTE	0.00	0.00	0.65	0.65	2
3	MRS. GEO. ROTH LISBERG		N.W. 1/4 NW 1/4 SEC. 17 T31N RTE	0.00	1.46	0.00	1.46	3
4	GUST DETTMER AND ANNA HIS WIFE		N.E. 1/4 NW 1/4 SEC. 17 T31N RTE	0.00	0.00	1.29	1.29	4
5	WALTER BOETTCHER AND CLARA "		N.W. 1/4 N.E. 1/4 SEC. 17 T31N RTE	0.77	0.00	0.53	1.30	5
6	" " " " " "		N.E. 1/4 N.E. 1/4 SEC. 17 T31N RTE	0.00	0.07	1.02	1.09	6
7	CHARLES A. RUNGE AND MARIE "		S.W. 1/4 S.W. 1/4 SEC. 8 T31N RTE	0.00	0.00	1.89	1.89	7
8	" " " " " "		PART OF S.E. 1/4 SW 1/4 SEC. 8 T31N RTE	0.00	0.00	1.53	1.53	8
9	OTTO F. ZASTROW AND EVELYN "		PART OF S.E. 1/4 SW 1/4 SEC. 8 T31N RTE	0.00	0.00	0.05	0.05	9
10	AUGUST MEYER (ESTATE)		S.W. 1/4 S.E. 1/4 SEC. 8 T31N RTE	1.16	0.00	0.70	1.86	10
11	" " " " " "		PART OF S.E. 1/4 S.E. 1/4 SEC. 8 T31N RTE	0.00	0.00	1.81	1.81	11
12	SCHOOL DISTRICT NO. 5		PART OF S.E. 1/4 S.E. 1/4 SEC. 8 T31N RTE	0.00	0.00	0.16	0.16	12
13	WM. STECKLING & ANNA HIS WIFE		S.W. 1/4 S.W. 1/4 SEC. 9 T31N RTE	0.00	0.00	2.13	2.13	13
14	PAUL KANITZ AND MABEL HIS WIFE		W 1/2 S.E. 1/4 S.W. 1/4 SEC. 9 T31N RTE	0.00	0.00	0.97	0.97	14
15	AMELIA KANITZ		E 1/2 S.E. 1/4 S.W. 1/4 SEC. 9 T31N RTE	0.00	0.00	1.03	1.03	15
16	HARRY BUCK AND BERTHA HIS WIFE		S.W. 1/4 S.E. 1/4 SEC. 9 T31N RTE	0.00	0.00	2.15	2.15	16
17	EMILIA GRUETZMACHER		S.E. 1/4 S.E. 1/4 SEC. 9 T31N RTE	0.00	0.00	2.33	2.33	17
18	ART BUCK AND ERNA HIS WIFE		N.W. 1/4 N.W. 1/4 SEC. 16 T31N RTE	0.00	1.07	0.00	1.07	18
19	" " " " " "		PART OF N.E. 1/4 NW 1/4 SEC. 16 T31N RTE	0.00	0.00	0.93	0.93	19
20	HARRY BUCK AND BERTHA "		PART OF N.E. 1/4 NW 1/4 SEC. 16 T31N RTE	0.00	0.00	0.30	0.30	20
21	" " " " " "		PART OF N.W. 1/4 N.E. 1/4 SEC. 16 T31N RTE	0.00	0.00	0.58	0.58	21
22	OTTO BUCK AND MINNIE "		PART OF N.W. 1/4 N.E. 1/4 SEC. 16 T31N RTE	0.00	0.00	0.56	0.56	22
23	HUGO SEMRAU AND MINNIE "		N.E. 1/4 N.E. 1/4 SEC. 16 T31N RTE	0.00	0.00	1.04	1.04	23
24	CHAS. DREVES AND MINNIE "		PART OF N.W. 1/4 NW 1/4 SEC. 15 T31N RTE	0.00	0.00	0.79	0.79	24
25	FARMERS DAIRY CO.		PART OF N.W. 1/4 NW 1/4 SEC. 15 T31N RTE	0.00	0.00	0.03	0.03	25
26	CHAS. DREVES AND MINNIE HIS WIFE		N.E. 1/4 N.W. 1/4 SEC. 15 T31N RTE	0.00	0.93	0.27	1.20	26
27	HERMAN SCHLEIF (ESTATE)		N.W. 1/4 N.E. 1/4 SEC. 15 T31N RTE	0.00	0.57	0.96	1.53	27
28	FRED VANSELOW AND MARTHA HIS WIFE		N.E. 1/4 N.E. 1/4 SEC. 15 T31N RTE	0.39	1.43	0.00	1.82	28
29	ERVIN J. GRUETZMACHER AND ANNA M. HIS WIFE		S.W. 1/4 S.W. 1/4 SEC. 10 T31N RTE	0.00	0.00	2.24	2.24	29
30	ADOLPH D. HINZ AND EMMA HIS WIFE		S.E. 1/4 S.W. 1/4 SEC. 10 T31N RTE	0.00	0.00	1.90	1.90	30
31	RICHARD WEEGE AND CLARA HIS WIFE		S.W. 1/4 S.E. 1/4 SEC. 10 T31N RTE	0.00	0.00	1.42	1.42	31
32	FRANK LEMKE AND ANNA "		S.E. 1/4 S.E. 1/4 SEC. 10 T31N RTE	0.44	1.15	0.00	1.59	32
33	" " " " " "		S.W. 1/4 S.W. 1/4 SEC. 11 T31N RTE	0.00	0.00	1.61	1.61	33
			TOTAL THIS SHEET	2.76	6.68	30.93	40.37	

REVISED BY MMH FEB. 17, 1939
 REVISED 7/6/1938
 BY W.V.G.

PLAT OF RIGHT OF WAY REQUIRED
 DIVISION JOB NO. 7069
 MERRILL -- ANTIGO ROAD
 5TH. NO. 64 LINCOLN COUNTY
 SCALE
 0 1 2 3 4 5 6

PAR.	OWNER	ADDRESS	DESCRIPTION	ACRES PURCHASED			TOTAL	PAR
				MARSH	UNIMPROVED	IMPROVED		
34	JULIUS LAABS, INCOMPETENT AND ALVINA HIS WIFE, HERMAN LAABS AND MARTHA HIS WIFE, AND HENRY LAABS		S.E. 1/4 SW. 1/4 SEC. 11 T31N R7E	0.00	0.00	2.07	2.07	34
35	CHAS. BOETTCHER AND HELEN HIS WIFE		SW. 1/4 S.E. 1/4 SEC. 11 T31N R7E	0.00	1.57	0.72	2.29	35
36	CARL SCHMIDTKE AND ADELA "		S.E. 1/4 S.E. 1/4 SEC. 11 T31N R7E	0.00	0.00	2.35	2.35	36
37	HERMAN KRUEGER AND HELEN "		NW. 1/4 NW. 1/4 SEC. 14 T31N R7E	0.00	0.00	1.46	1.46	37
38	MINNIE SCHMIDTKE		N.E. 1/4 NW. 1/4 SEC. 14 T31N R7E	0.00	0.71	0.41	1.12	38
39	JULIUS LATZIG AND MARTHA HIS WIFE		N.W. 1/4 N.E. 1/4 SEC. 14 T31N R7E	0.00	0.40	0.60	1.00	39
40	CARL W. KARAU AND HELEN "		N.E. 1/4 N.E. 1/4 SEC. 14 T31N R7E	0.00	0.00	0.97	0.97	40
41	" " " " " "		N.W. 1/4 NW. 1/4 SEC. 13 T31N R7E	0.00	0.44	0.67	1.11	41
42	ALBERT KARAU AND ANNA "		N.E. 1/4 NW. 1/4 SEC. 13 T31N R7E	0.00	0.62	0.51	1.13	42
43	" " " " " "		NW. 1/4 N.E. 1/4 SEC. 13 T31N R7E	0.00	0.54	0.47	1.01	43
44	" " " " " "		N.E. 1/4 N.E. 1/4 SEC. 13 T31N R7E	0.00	0.00	1.05	1.05	44
45	FRANK LEMKE AND ANNA "		SW. 1/4 SW. 1/4 SEC. 12 T31N R7E	0.00	0.00	2.42	2.42	45
46	ART VANSELOW AND PEARL "		S.E. 1/4 SW. 1/4 SEC. 12 T31N R7E	0.00	2.32	0.00	2.32	46
47	ARTHUR KARAU AND KATHERINE "		SW. 1/4 S.E. 1/4 SEC. 12 T31N R7E	0.00	0.78	1.17	1.95	47
48	ULRICH RENKIN AND ADELA "		S.E. 1/4 S.E. 1/4 SEC. 12 T31N R7E	0.00	0.00	2.12	2.12	48
49	ALVIN KARAU AND AGNES F. "		SW. 1/4 SW. 1/4 SEC. 7 T31N R8E	0.00	0.00	2.92	2.92	49
50	" " " " " "		S.E. 1/4 SW. 1/4 SEC. 7 T31N R8E	0.00	0.00	2.28	2.28	50
51	LESLIE PANKOW AND RUTH "		SW. 1/4 S.E. 1/4 SEC. 7 T31N R8E	1.59	0.85	0.00	2.44	51
52	AUGUST K FALK AND ELIZABETH "		S.E. 1/4 S.E. 1/4 SEC. 7 T31N R8E	0.00	2.39	0.00	2.39	52
53	CARL KARAU AND HELEN "		N.W. 1/4 NW. 1/4 SEC. 18 T31N R8E	0.00	0.00	1.00	1.00	53
54	" " " " " "		N.E. 1/4 NW. 1/4 SEC. 18 T31N R8E	0.00	0.76	0.00	0.76	54
55	FRANK VALENTA AND MARIE "		N.W. 1/4 N.E. 1/4 SEC. 18 T31N R8E	0.00	0.51	0.00	1.11	55
56	LESLIE PANKOW AND RUTH "		N.E. 1/4 N.E. 1/4 SEC. 18 T31N R8E	0.00	0.00	0.91	0.91	56
57	WM. PANKOW AND ALBERTINA "		N.W. 1/4 N.W. 1/4 SEC. 17 T31N R8E	0.00	0.00	0.57	0.57	57
58	" " " " " "		PART OF N.E. 1/4 NW. 1/4 SEC. 17 T31N R8E	0.10	0.31	0.02	0.43	58
59	SCHOOL DISTRICT NO. 4		PART OF N.E. 1/4 NW. 1/4 SEC. 17 T31N R8E	0.00	0.00	0.02	0.02	59
60	PAULINE BOETTCHER AND RICHARD HER HUSBAND		NW. 1/4 N.E. 1/4 SEC. 17 T31N R8E	0.00	0.00	0.92	0.92	60
61	GOTTLIEB KARAU AND AUGUSTA HIS WIFE		N.E. 1/4 N.E. 1/4 SEC. 17 T31N R8E	0.00	0.00	1.03	1.03	61
62	CARL A. SCHMIDTKE AND ADELA HIS WIFE		SW. 1/4 SW. 1/4 SEC. 8 T31N R8E	0.00	0.00	2.56	2.56	62
63	" " " " " "		S.E. 1/4 SW. 1/4 SEC. 8 T31N R8E	0.64	1.80	0.00	2.44	63
64	ETHEL O'DAY		SW. 1/4 S.E. 1/4 SEC. 8 T31N R8E	0.00	0.00	2.62	2.62	64
65	" " " " " "		S.E. 1/4 S.E. 1/4 SEC. 8 T31N R8E	0.00	0.00	2.22	2.22	65
24A	CHARLES DREYES & MINNIE, HIS WIFE		PART OF NW. 1/4 NW. 1/4 SEC. 15 T31N R7E	0.00	0.00	0.13	0.13	24A
			TOTAL THIS SHEET	2.93	14.00	34.19	51.12	
			GRAND TOTAL	5.69	20.68	65.12	91.49	

REVISED BY MMH. FEB. 17, 1939
 REVISED 7/6/1938
 BY W.V.G.

PLAT OF RIGHT OF WAY REQUIRED
 DIVISION JOB NO. 7069
 MERRILL — ANTIGO ROAD
 S.T.H. NO. 64 LINCOLN COUNTY
 SCALE