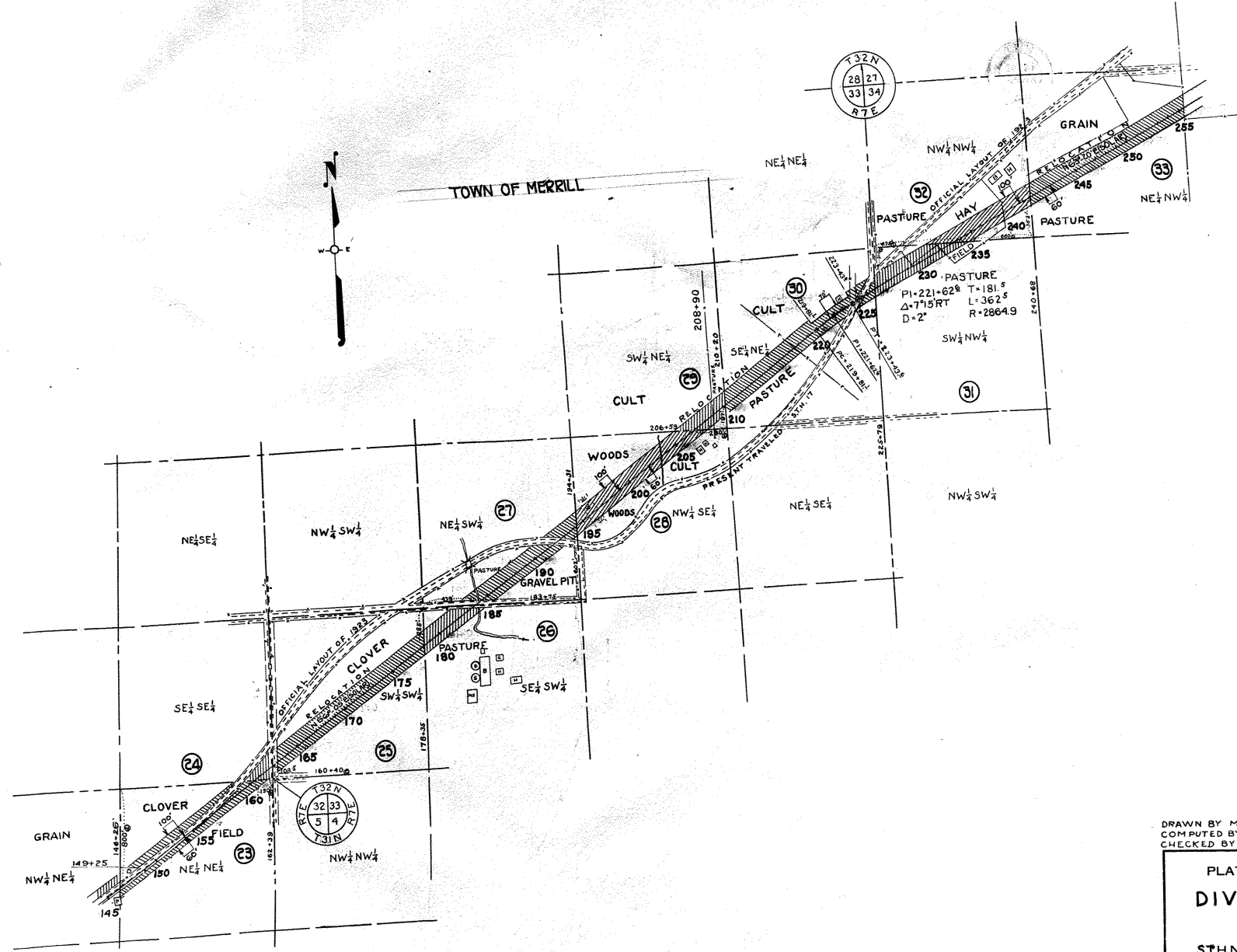


DRAWN BY M. WEBER
 COMPUTED BY WM. THOMPSON
 CHECKED BY M. WEBER

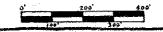
PLAT OF RIGHT OF WAY REQUIRED
DIVISION JOB NO. 7034
 MERRILL - DUDLEY ROAD
 S.T.H. NO. 17 LINCOLN COUNTY
 SCALE

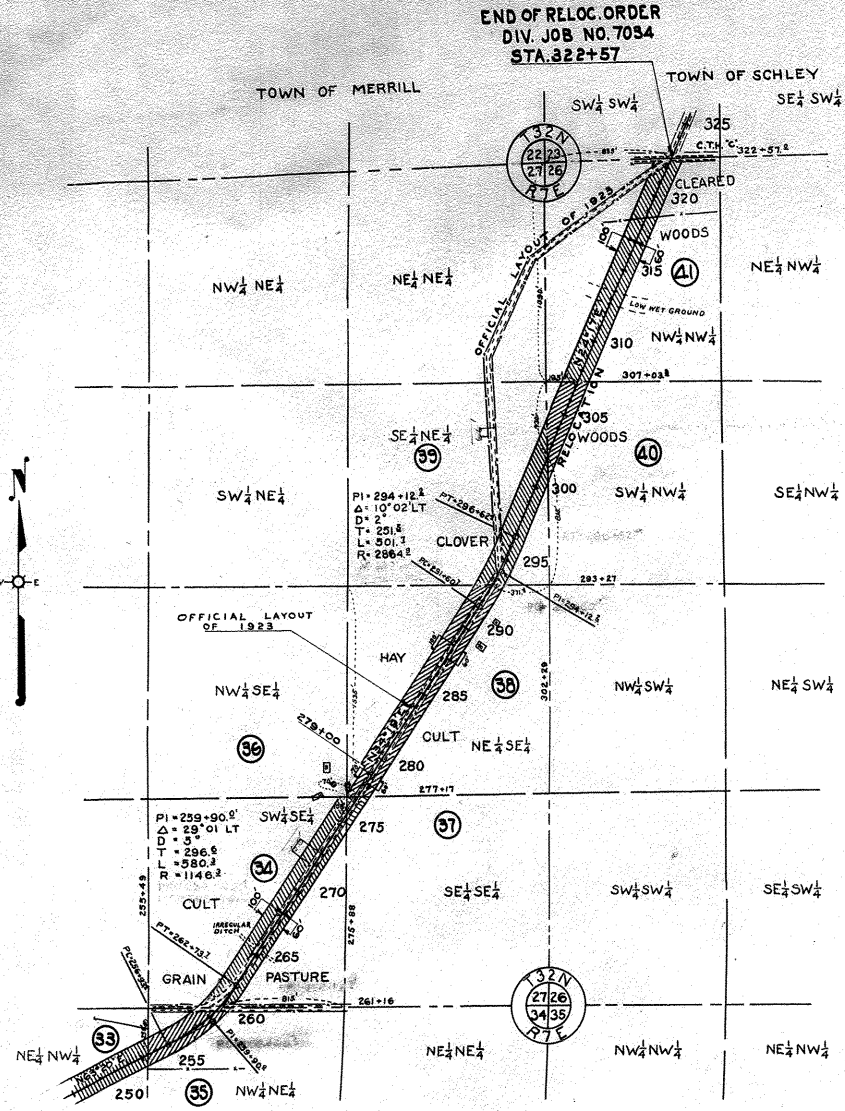
FED. ROAD DIST. NO.	STATE	USWPH PROJECT NO.	SHEET NO.	TOTAL SHEETS
4	WIS.	618A	5	
DIVISION JOB NO. 7034				



DRAWN BY M. WEBER
 COMPUTED BY W.M. THOMPSON
 CHECKED BY M. WEBER

PLAT OF RIGHT OF WAY REQUIRED
DIVISION JOB NO. 7034
 MERRILL - DUDLEY ROAD
 ST. NO. 17 LINCOLN COUNTY
 SCALE





PAR.	OWNER	DESCRIPTION	ACRES			TOTAL
			MARSH	UNIMPROVED	PURCHASE IMPROVED	
1	LINCOLN COUNTY	NE 1/4 NE 1/4 SECTION 12 T 31 N R 6 E			2.01	2.01
2	LOUISE GOETSCH	SE 1/4 SE 1/4 " 1 T 31 N R 6 E				0.91
3	LINCOLN COUNTY	NW 1/4 NW 1/4 " 7 T 31 N R 7 E	0.91		0.91	0.88
4	LINCOLN COUNTY	NE 1/4 NW 1/4 " 7 T 31 N R 7 E				0.88
5	MRS. OLGA WEBB	NW 1/4 NE 1/4 " 7 "		0.20	0.51	0.71
6	MRS. OLGA WEBB	NE 1/4 NE 1/4 " 7 "	0.06		0.78	0.84
7	WILLIAM COHRS AND WIFE ANNA	NW 1/4 NW 1/4 " 8 "	0.11		0.97	1.08
8	HERMAN C COHRS	NE 1/4 NW 1/4 " 8 "			0.54	0.54
9	JOHN HIMMELSBACH AND WIFE	SW 1/4 SW 1/4 " 6 "	78		1.48	2.26
10	LINCOLN COUNTY	SE 1/4 SW 1/4 " 6 "			1.93	1.93
11	CITIZENS AMERICAN BANK	SW 1/4 SE 1/4 SECTION 6 T 31 N R 7 E			1.81	1.81
12	CITIZENS INVESTMENT CO.	SE 1/4 SE 1/4 " 6 "			1.65	1.65
13	JM. AND L.J. O'REILLY	SW 1/4 SW 1/4 " 5 "			1.78	1.78
14	ANNA STEVENSON GUNDERSON, CLARA STEVENSON BJORNBERG, THEODORE STEVENSON, JULIA STEVENSON SCHNEIDER, SIGRID STEVENSON, CAROLINA STEVENSON CHILSEN	SE 1/4 SW 1/4 " 5 "	0.15		5.17	5.32
15	JOHN LINDQUIST	NE 1/4 SW 1/4 " 5 "			1.75	1.75
16	JOHN LINDQUIST	NW 1/4 SE 1/4 " 5 "	0.07		0.45	0.52
17	JOHN LINDQUIST	SW 1/4 SE 1/4 " 5 "			0.78	0.78
18	ALVIN T. OSNESS	SE 1/4 NW 1/4 " 5 "			0.73	0.73
19	ALVIN T. OSNESS	SW 1/4 NE 1/4 " 5 "	46		3.32	3.78
20	FRED SMITH	NW 1/4 NE 1/4 " 5 "			1.19	1.19
21	BARNES CREEK CO-OPERATIVE CHEESE CO.	NW 1/4 NE 1/4 " 5 T 31 N R 7 E			0.07	0.07
22	SCHOOL DIST. NO. 6 - TOWN OF MERRILL	NW 1/4 NE 1/4 " 5 "			0.41	0.41
23	HANS OSNESS	NE 1/4 NE 1/4 " 5 "			3.05	3.05
24	HANS OSNESS	SE 1/4 SE 1/4 " 32 T 32 N R 7 E			0.50	0.50
25	HANS OSNESS	SW 1/4 SW 1/4 " 33 "			5.70	5.70
26	JOHN O'DAY ESTATE	SE 1/4 SW 1/4 " 33 "			1.59	1.59
27	JOHN O'DAY ESTATE	NE 1/4 SW 1/4 " 33 "			3.35	3.35
28	JOSEPH PRILL	NW 1/4 SE 1/4 " 33 "	0.37		2.90	4.42
29	GUSTAVE GUNDERSON	SW 1/4 NE 1/4 " 33 "			48	95
30	HERBERT A. SCHMIDT AND WIFE ELLA	SE 1/4 NE 1/4 " 33 "			2.6	2.30
SUBTOTAL			105	11.41	44.36	56.82
31	WILLIAM H. SCHMIDT	SW 1/4 NW 1/4 " 34 T 32 N R 7 E	1.84		74	2.58
32	WILLIAM H. SCHMIDT	NW 1/4 NW 1/4 " 34 "	1.22		1.67	2.89
33	WALTER MASS AND WIFE ZOLA	NE 1/4 NW 1/4 " 34 "	5.44			5.44
34	WALTER MASS AND WIFE ZOLA	SW 1/4 SE 1/4 " 27 "			3.37	3.37
35	EMIL MAAS	NW 1/4 NE 1/4 " 34 "	0.87		0.86	1.73
37	OTTO PFANTZ	SE 1/4 SE 1/4 " 27 "			0.18	0.18
38	OTTO PFANTZ	NE 1/4 SE 1/4 " 27 "			3.34	3.34
39	IDA CRAMER	SE 1/4 NE 1/4 " 27 "	2.93		0.24	3.17
40	DANIEL KNISPEN	SW 1/4 NW 1/4 " 26 "	1.55			1.55
41	WILLIAM SCHIELD	NW 1/4 NW 1/4 " 26 T 32 N R 7 E	4.26		1.26	5.52
GRAND TOTAL			105	22.52	56.02	86.59

PLAT OF RIGHT OF WAY REQUIRED
DIVISION JOB NO. 7034
 MERRILL - DUDLEY ROAD
 S.T.H. NO. 17 LINCOLN COUNTY
 SCALE

COMPUTED BY WM. THOMPSON CHECKED BY M. WEBER
 DRAWN BY M. WEBER