

STATE OF WISCONSIN

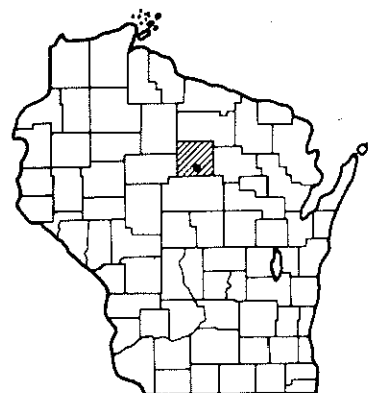
DEPARTMENT OF TRANSPORTATION DIVISION OF HIGHWAYS

STATE PROJECT	FEDERAL PROJECT	
	PROJECT	CONTRACT
9996-1-70	T 4190(2)	1

Index of Sheets

Sheet No.	Title
Sheet No. 1	Typical Cross Sections
Sheet No. 2-2.8	Estimate of Quantities
Sheet No. 3A	Miscellaneous Quantities
Sheet No. -	Right of Way Plat
Sheet No. 5-5.1	Plan and Profile
Sheet No. 6-6.7	Standard Details
Sheet No. -	Structure Plans
Sheet No. -	Computer Earthwork Data
Sheet No. 8-8.3	Cross Sections

TOTAL SHEETS = 26



PLAN AND PROFILE OF PROPOSED

CITY OF MERRILL TOPICS

STUYVESANT ST. & E MAIN ST. INTERSECTION
STUYVESANT ST. & E FIRST ST. INTERSECTION
CENTER AVE. & E. FIRST ST. INTERSECTION

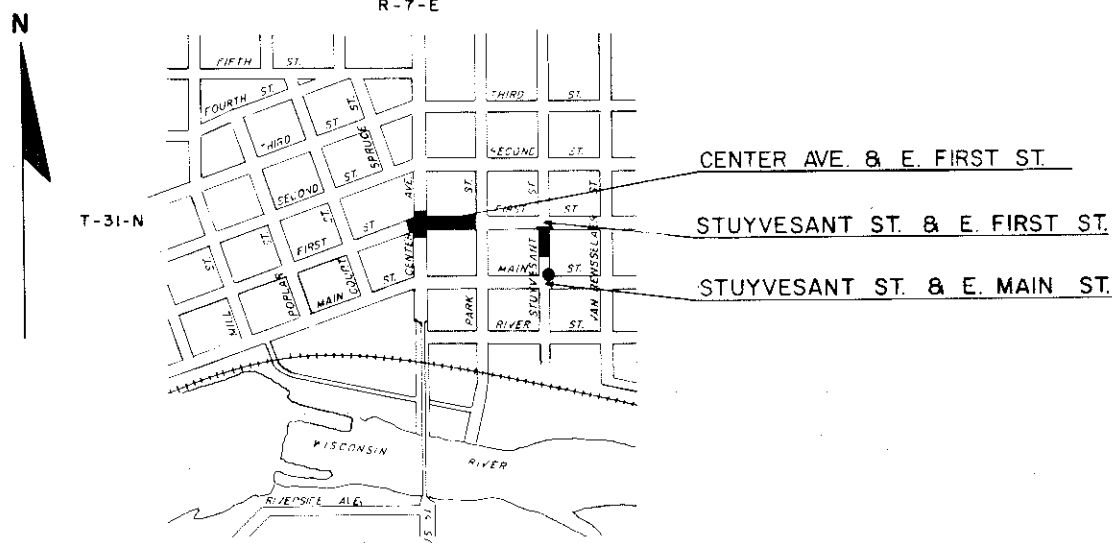
LINCOLN COUNTY

STATE PROJECT NUMBER
9996-1-70

Scales: Plan 1 in. = 20 ft.
Profile Hor. 1 in. = 20 ft. Vert 1 in. = 2 ft.
Cross Sections Hor. 1 in. = 5 ft. Vert 1 in. = 2 ft.

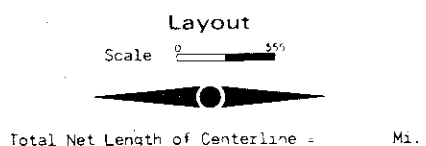
Design Designation

A.D.T.	1974	= 700
A.D.T.	1994	= 12,600
D.H.V.		= 1,260
D.		= 10%
T.		= 8%
V.		= 25 M, P H.



Conventional Signs

County Line	-----	Culverts in Place	-----
Township or Range Line	-----	Culverts Required	-----
Section Line	-----	Drop Inlet	-----
New Right of Way Line	-----	Power Pole	-----
Present Right of Way Line	-----	Telephone or Telegraph Pole	-----
Wire Fence	-----	Right of Way Markers	-----
Corporate or City Limits	-----	Reference Stake for Hubs Only	-----
Property Line	-----	Marsh	-----
Traveled Way or P.E.	-----	Hedge	-----
Railroads	-----	Trees	-----
Base or Survey Line	-----	Ground Elevation	-----
Caution Symbol (combustible fluids under pressure)	CAUTION	Grade Elevation	-----



APPROVED FOR
CITY OF MERRILL, WISCONSIN

APRIL 2, 1974 *Ralph E. Voina*
Date Mayor

STATE OF WISCONSIN
DEPARTMENT OF TRANSPORTATION
DIVISION OF HIGHWAYS

Surveyor: _____ District Checker: _____
Designer: _____ C.O. Checker: **R.A.H.**

Correct:

Date 4-10-74 *R.D. Schindler*
District Engineer

Recommended for Approval:

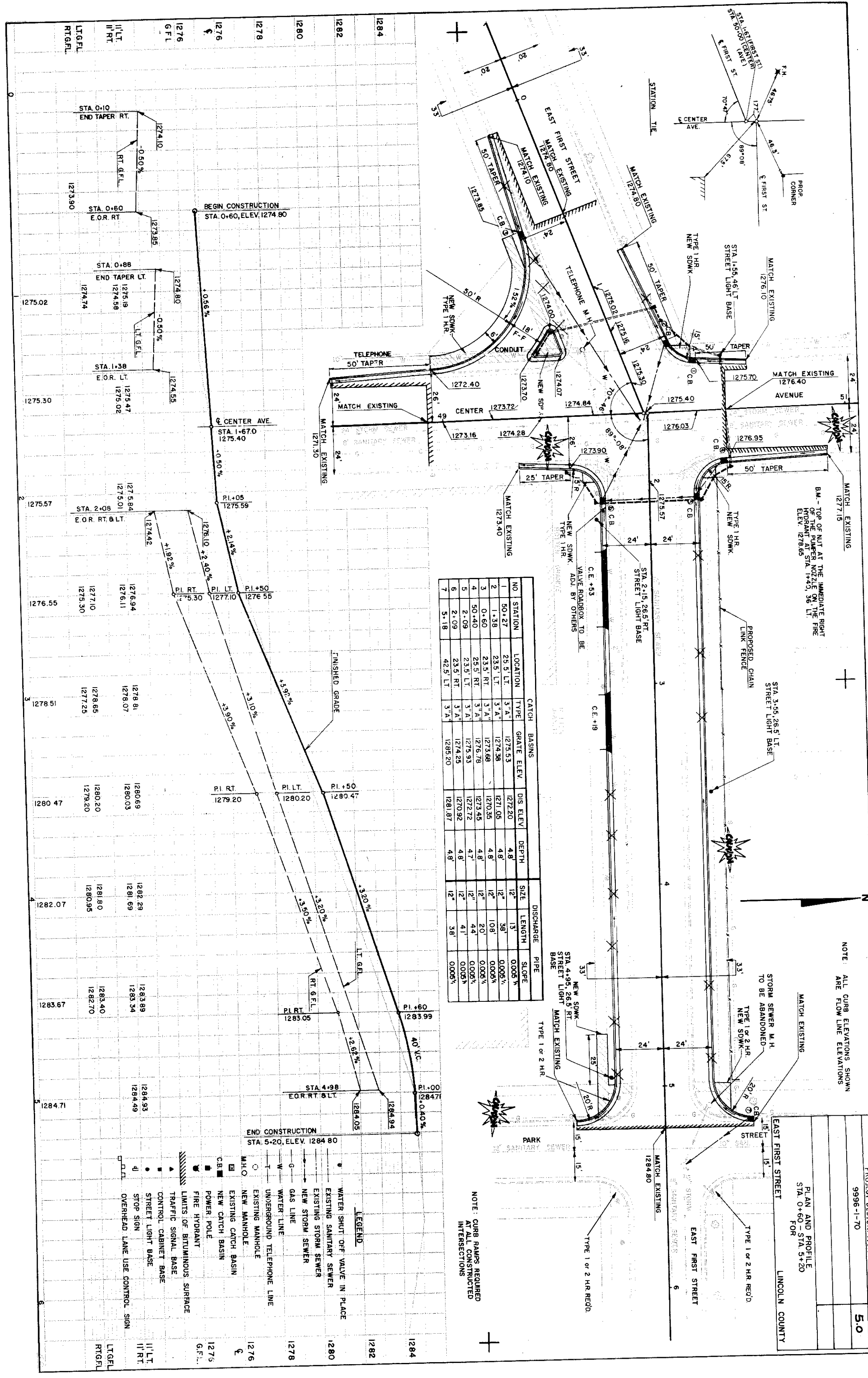
Date 4-16-74 *J.C. Obernick*
Chief of Facilities Development

Approved:

Date 4/17/74 *H.L. Fiedler*
State Highway Engineer

U.S. DEPARTMENT OF TRANSPORTATION
FEDERAL HIGHWAY ADMINISTRATION
REGION 5 WISCONSIN DIVISION

Approved: _____
Date _____
Division Engineer



NO	STATION	LOCATION	TYPE	GRATE ELEV.	DIS. ELEV.	DEPTH	SIZE	LENGTH	SLOPE
1	50+27	25.5' LT.	3'A	1275.53	1272.20	4'8"	18"	13'	0.005%
2	1+38	23.5' RT.	3'A	1274.36	1271.03	4'8"	18"	38'	0.005%
3	0+60	23.5' RT.	3'A	1273.89	1270.56	4'8"	18"	108'	0.005%
4	50+40	23.5' RT.	3'A	1273.78	1270.45	4'7"	20"	20'	0.005%
5	2+09	23.5' LT.	3'A	1273.32	1270.00	4'8"	18"	44'	0.005%
6	2+09	23.5' RT.	3'A	1273.28	1270.02	4'8"	18"	41'	0.005%
7	5+18	42.5' LT.	3'A	1283.20	1280.87	4'8"	18"	38'	0.005%

- LEGEND**
- WATER SHUT OFF VALVE IN PLACE
 - EXISTING SANITARY SEWER
 - NEW SANITARY SEWER
 - EXISTING STORM SEWER
 - NEW STORM SEWER
 - GAS LINE
 - WATER LINE
 - EXISTING MANHOLE
 - NEW MANHOLE
 - EXISTING CATCH BASIN
 - NEW CATCH BASIN
 - POWER POLE
 - FIRE HYDRANT
 - LIMITS OF BITUMINOUS SURFACE
 - TRAFFIC SIGNAL BASE
 - CONTROL CABINET BASE
 - STOP SIGN
 - OVERHEAD LANE USE CONTROL SIGN

NOTE: CURB RAISES REQUIRED AT INTERSECTIONS

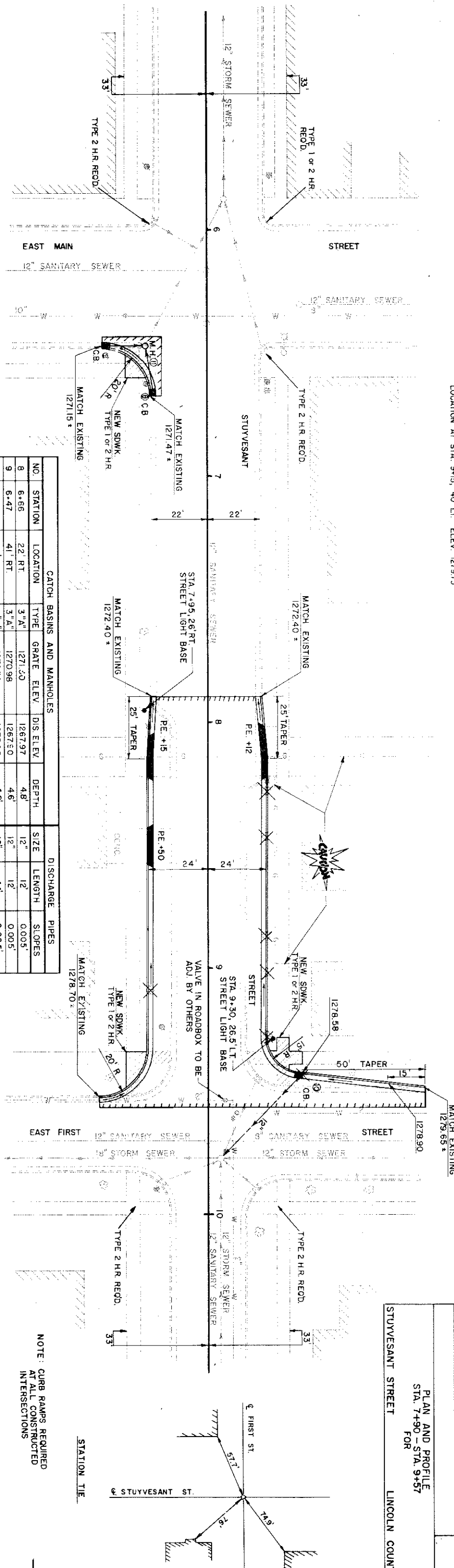
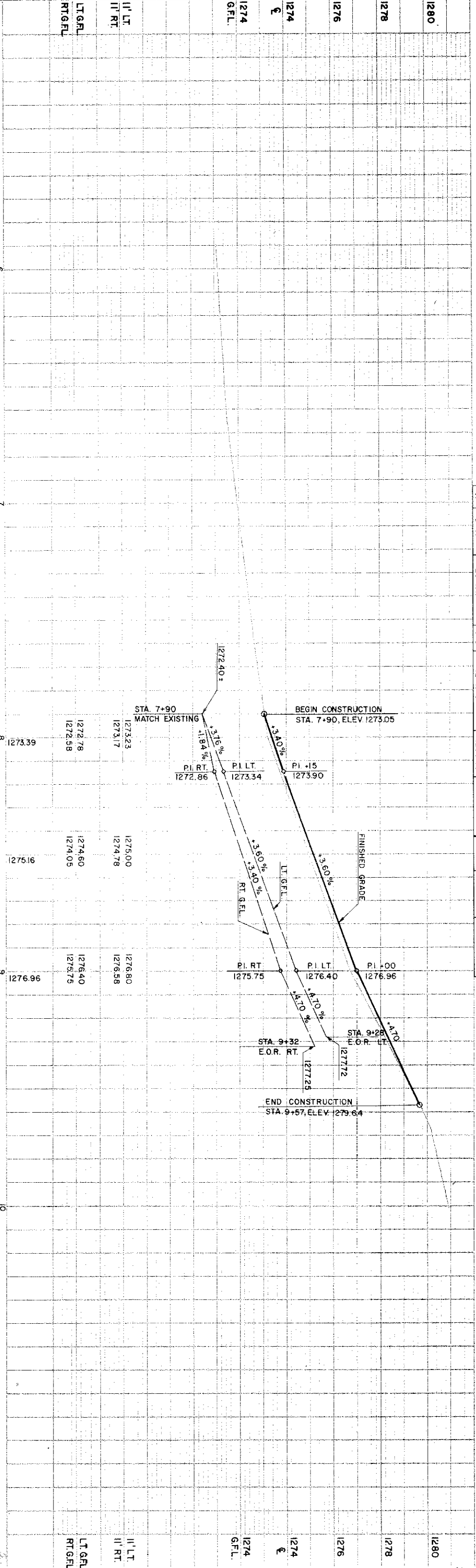
NOTE: ALL CURB ELEVATIONS SHOWN ARE FLOW LINE ELEVATIONS

1284
1282
1280
1278
1276
1274
1272
1270
1268
1266
1264
1262
1260
1258
1256
1254
1252
1250
1248
1246
1244
1242
1240
1238
1236
1234
1232
1230
1228
1226
1224
1222
1220
1218
1216
1214
1212
1210
1208
1206
1204
1202
1200
1198
1196
1194
1192
1190
1188
1186
1184
1182
1180
1178
1176
1174
1172
1170
1168
1166
1164
1162
1160
1158
1156
1154
1152
1150
1148
1146
1144
1142
1140
1138
1136
1134
1132
1130
1128
1126
1124
1122
1120
1118
1116
1114
1112
1110
1108
1106
1104
1102
1100
1098
1096
1094
1092
1090
1088
1086
1084
1082
1080
1078
1076
1074
1072
1070
1068
1066
1064
1062
1060
1058
1056
1054
1052
1050
1048
1046
1044
1042
1040
1038
1036
1034
1032
1030
1028
1026
1024
1022
1020
1018
1016
1014
1012
1010
1008
1006
1004
1002
1000
998
996
994
992
990
988
986
984
982
980
978
976
974
972
970
968
966
964
962
960
958
956
954
952
950
948
946
944
942
940
938
936
934
932
930
928
926
924
922
920
918
916
914
912
910
908
906
904
902
900
898
896
894
892
890
888
886
884
882
880
878
876
874
872
870
868
866
864
862
860
858
856
854
852
850
848
846
844
842
840
838
836
834
832
830
828
826
824
822
820
818
816
814
812
810
808
806
804
802
800
798
796
794
792
790
788
786
784
782
780
778
776
774
772
770
768
766
764
762
760
758
756
754
752
750
748
746
744
742
740
738
736
734
732
730
728
726
724
722
720
718
716
714
712
710
708
706
704
702
700
698
696
694
692
690
688
686
684
682
680
678
676
674
672
670
668
666
664
662
660
658
656
654
652
650
648
646
644
642
640
638
636
634
632
630
628
626
624
622
620
618
616
614
612
610
608
606
604
602
600
598
596
594
592
590
588
586
584
582
580
578
576
574
572
570
568
566
564
562
560
558
556
554
552
550
548
546
544
542
540
538
536
534
532
530
528
526
524
522
520
518
516
514
512
510
508
506
504
502
500
498
496
494
492
490
488
486
484
482
480
478
476
474
472
470
468
466
464
462
460
458
456
454
452
450
448
446
444
442
440
438
436
434
432
430
428
426
424
422
420
418
416
414
412
410
408
406
404
402
400
398
396
394
392
390
388
386
384
382
380
378
376
374
372
370
368
366
364
362
360
358
356
354
352
350
348
346
344
342
340
338
336
334
332
330
328
326
324
322
320
318
316
314
312
310
308
306
304
302
300
298
296
294
292
290
288
286
284
282
280
278
276
274
272
270
268
266
264
262
260
258
256
254
252
250
248
246
244
242
240
238
236
234
232
230
228
226
224
222
220
218
216
214
212
210
208
206
204
202
200
198
196
194
192
190
188
186
184
182
180
178
176
174
172
170
168
166
164
162
160
158
156
154
152
150
148
146
144
142
140
138
136
134
132
130
128
126
124
122
120
118
116
114
112
110
108
106
104
102
100
98
96
94
92
90
88
86
84
82
80
78
76
74
72
70
68
66
64
62
60
58
56
54
52
50
48
46
44
42
40
38
36
34
32
30
28
26
24
22
20
18
16
14
12
10
8
6
4
2
0

B.M. - N.E. CORNER OF HOUSE STEPS, APPROXIMATE
 LOCATION AT STA. 9+51, 40' LT. ELEV. 1279.73

PROJECT DESIGNATION	9996-1-70	SHEET NO.	5/1
PLAN AND PROFILE STA. 7+90 - STA. 9+57 FOR STUYVESANT STREET LINCOLN COUNTY			

CATCH BASINS AND MANHOLES				DISCHARGE PIPES					
NO.	STATION	LOCATION	TYPE	GRATE ELEV.	DIS. ELEV.	DEPTH	SIZE	LENGTH	SLOPES
8	6+66	22' RT.	3'A"	1271.20	1267.97	4.8'	12"	12'	0.005'
9	6+47	41' RT.	3'A"	1270.98	1267.50	4.6'	12"	12'	0.005'
10	9+43	37' LT.	3'A"	1278.58	1275.25	4.8'	12"	44'	0.005'
11	6+47	25' RT.	1'J"	1271.75	1266.60	5.2'	12"		



NOTE: CURB RAMPS REQUIRED
 AT ALL CONSTRUCTED
 INTERSECTIONS

STATION TIE

