

PROJECT	SHEET NO.	TOTAL SHEETS
S 0693(6)	2A	55

DETAIL SUMMARY OF MISCELLANEOUS QUANTITIES

CLEARING AND GRUBBING

Station-Station	(Acres) Clearing	Grubbing
35+37 - 71+00	2.0	4.3
71+00 - 95+15	1.6	1.9
95+15 - 96+65	0	0
96+65 - 112+00	0.7	0.6
112+00 - 130+00	0.7	0.6
130+00 - 143+00	0.5	1.5
143+00 - 143+40	0	0
143+40 - 163+00	1.2	2.6
163+00 - 203+00	2.3	4.3
203+00 - 225+70	0.8	0.8
TOTALS	9.8	16.6

EXCAVATION

Station-Station	Unclassified	Borrow
35+37 - 50+20	1,969	
50+20 - 68+00	8,417	
68+00 - 81+10	11,527	
81+10 - 92+00	3,218	
92+00 - 99+30	1,295	350
99+30 - 106+10	1,855	
106+10 - 112+65	2,500	
112+65 - 118+50	660	1,650
118+50 - 145+00	8,633	
145+00 - 154+60	3,676	
154+60 - 168+35	17,374	
168+35 - 183+15	8,937	
183+15 - 187+05	1,127	
187+05 - 201+60	3,711	
201+60 - 225+70	7,328	4,800
Offtake ditches	100	
TOTALS	82,327	6,800

TRAFFIC BOUND BASE COURSE

Station-Station	Cu.Yds.
35+37 - 225+70	11,040
23 P.E.s at 20	460
2 Tn.Rds. at 50	100
TOTAL	11,600

CULVERT SCHEDULE

Station	Location		Culvert Pipe					Mortar Masonry	Marker Posts
	Lt.	Rt.	18"	24"	30"	36"	42"		
38+90		x	30					2.0	
39+10	x		30					2.0	
50+40	x			64				2.0	2
55+53	x		30					2.0	
58+25		x	30					2.0	
58+50	x				72			2.6	2
65+00	x		30					2.0	
70+63		x	30					2.0	
81+50	x				64			2.6	2
83+70		x	30					2.0	
85+22		x	30					2.0	
93+37		x	30					2.0	2
102+00	x			52				2.0	
106+60		x	30					2.0	
115+30	x				30			2.0	
115+50		x			30			2.0	
117+52		x			30			2.0	
120+50	x						54	4.4	2
129+07	x			62				2.6	2
131+30		x	30					2.0	
132+60		x	30					2.0	
134+95	x				58			2.6	2
140+30		x	30					2.0	
143+10		x	50					2.0	
143+10		x	50					2.0	
146+11	x			58				2.0	2
150+40		x	30					2.0	
159+25		x	30					2.0	
159+80		x	30					2.0	
166+00	x				56	116		3.4	2
185+62	x							2.0	2
193+60		x	30					2.0	
194+45		x	30					2.0	
209+00		x	30					2.0	
TOTALS			670	320	256	116	54	74.2	20

LANDMARK WITNESS MONUMENTS

Location	No.
Sta. 90+12.4 Lt.	1
Sta. 200+00 Lt.	1
TOTAL	2

MARSH EXCAVATION

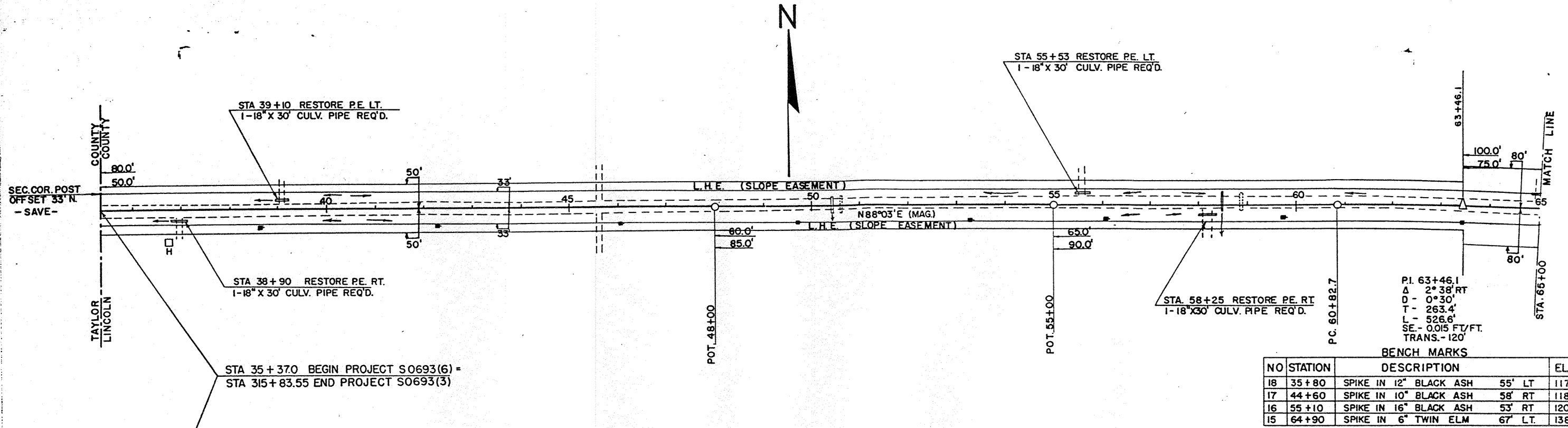
Station-Station	Cu.Yds.
49+00 - 52+00	200
101+00 - 104+00	51
111+00 - 114+00	768
117+50 - 126+00	718
128+10 - 130+00	191
134+00 - 136+00	114
145+40 - 150+00	311
155+35 - 157+45	517
172+60 - 173+65	41
175+75 - 178+00	151
180+00 - 181+65	475
184+45 - 185+62	130
190+30 - 193+00	863
222+10 - 225+70	952
TOTAL	5,482

SCDDING

Sta.-Sta.	Size	Type	No.	Sq.Yds.
115 - 117 Lt. & Rt.	5x15	Checks	6	60
137 - 144 Lt. & Rt.	6x15	"	14	140
160 - 164 Lt. & Rt.	6x15	"	14	140
170+50-171 Lt. & Rt.	50x15	Flumes	2	165
172 - 180 Lt. & Rt.	6x15	Checks	34	340
195 - 218 Lt. & Rt.	6x15	"	96	960
219-219+50 Lt. & Rt.	50x15	Flumes	2	165
TOTAL				1,970

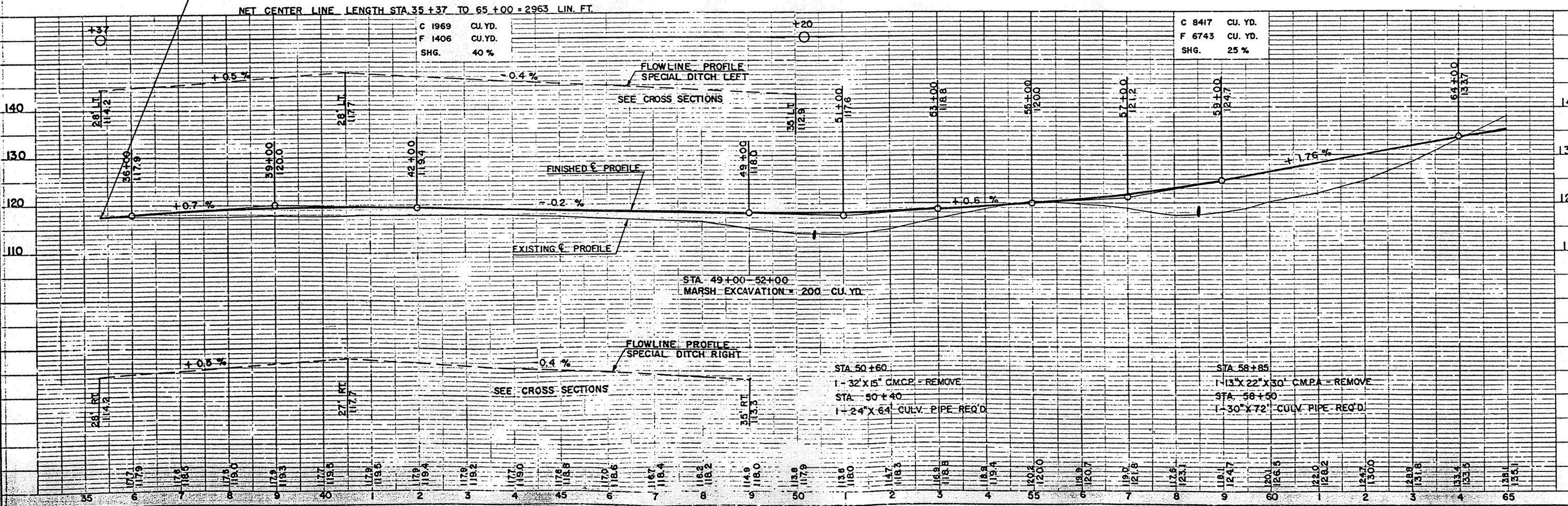
GRANULAR SUBBASE COURSE

Station-Station	Cu.Yds.
35+37 - 63+00	4,614
63+00 - 173+00	13,310
173+00 - 194+00	3,507
194+00 - 225+70	3,835
2 tn. rds. at 50	100
107+50 - 110+50 Replace E.B.S. Material	860
TOTAL	26,226



BENCH MARKS

NO	STATION	DESCRIPTION	ELEV.
18	35+80	SPIKE IN 12" BLACK ASH 55' LT	117.80
17	44+60	SPIKE IN 10" BLACK ASH 58' RT	118.19
16	55+10	SPIKE IN 16" BLACK ASH 53' RT	120.30
15	64+90	SPIKE IN 6" TWIN ELM 67' LT	138.52



PLAN AND PROFILE STA 35+00-65+00

PLANNED
 CHECKED
 NO. 7/67

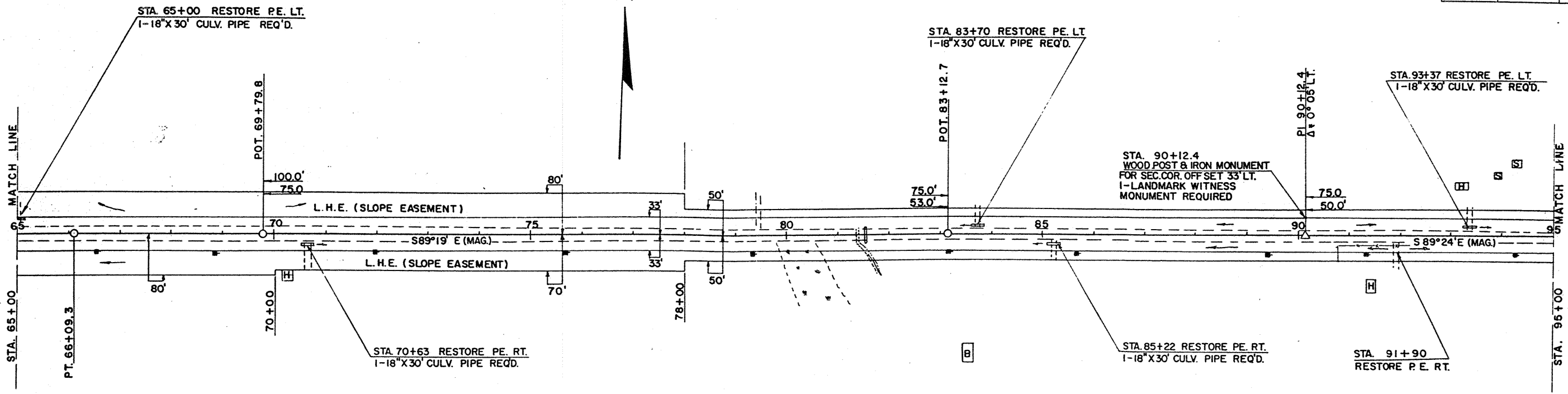
SURVEYED
 CHECKED
 NO. 7/67

PLATE 1 - PLAN AND PROFILE STA 35+00-65+00

S.P.R. DIVISION	PROJECT	SHEET NUMBER	TOTAL SHEETS
4	S0693(6)	4	55

DATE: 1/19/65
 DRAWN BY: S. Kangel
 CHECKED BY: S. Kangel
 SURVEYED: S. Kangel
 PLOTTED: S. Kangel
 NOTE BOOK NO. 147
 NO. OF PAGES: 1

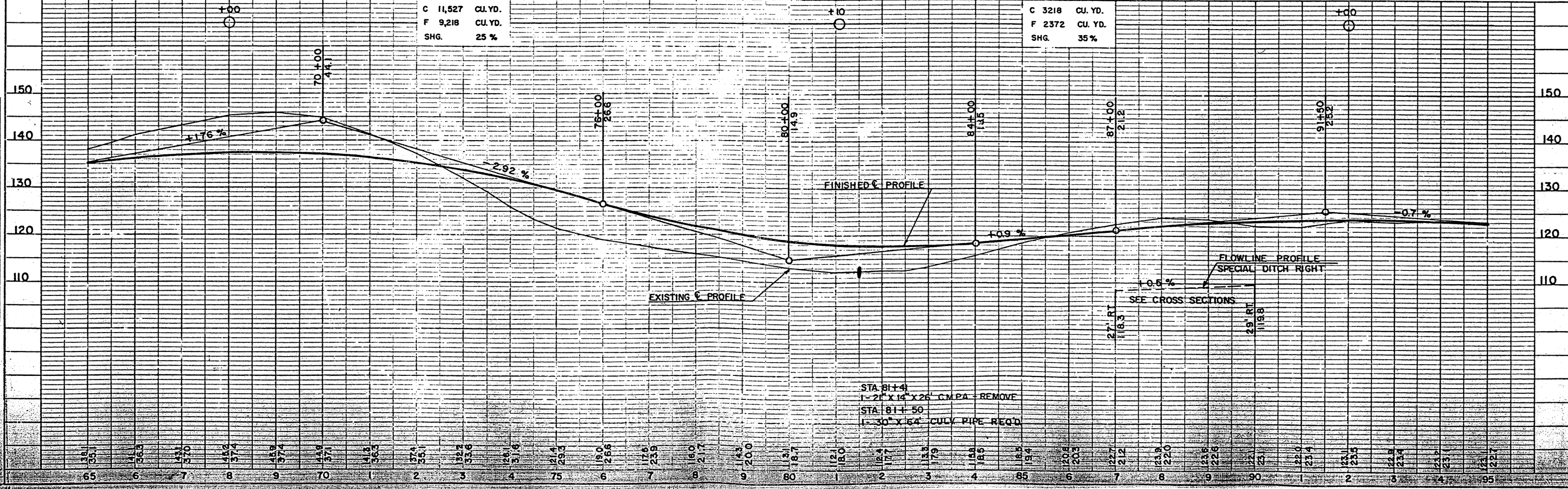
DATE: 1/19/65
 DRAWN BY: S. Kangel
 CHECKED BY: S. Kangel
 SURVEYED: S. Kangel
 PLOTTED: S. Kangel
 NOTE BOOK NO. 147
 NO. OF PAGES: 1



BENCH MARKS

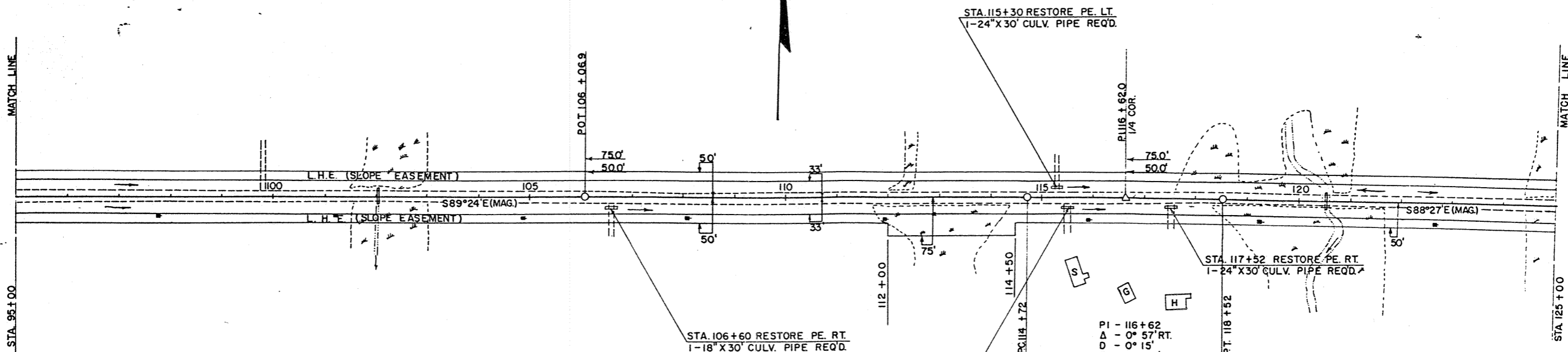
NO	STATION	DESCRIPTION	ELEV.
14	72+40	SPIKE IN 14" MAPLE 97' LT	136.01
13	80+60	SPIKE IN 10" BLACK ASH 58' RT	112.40
12	90+25	SPIKE IN 10" MAPLE 54' RT	121.48

NET CENTERLINE LENGTH STA. 65+00 - 95+00 = 3000 LIN. FT



STA 81+4
 1-21" X 14" X 26" C.M.P.A. - REMOVE
 STA 81+50
 1-30" X 64" CULV PIPE REQ'D

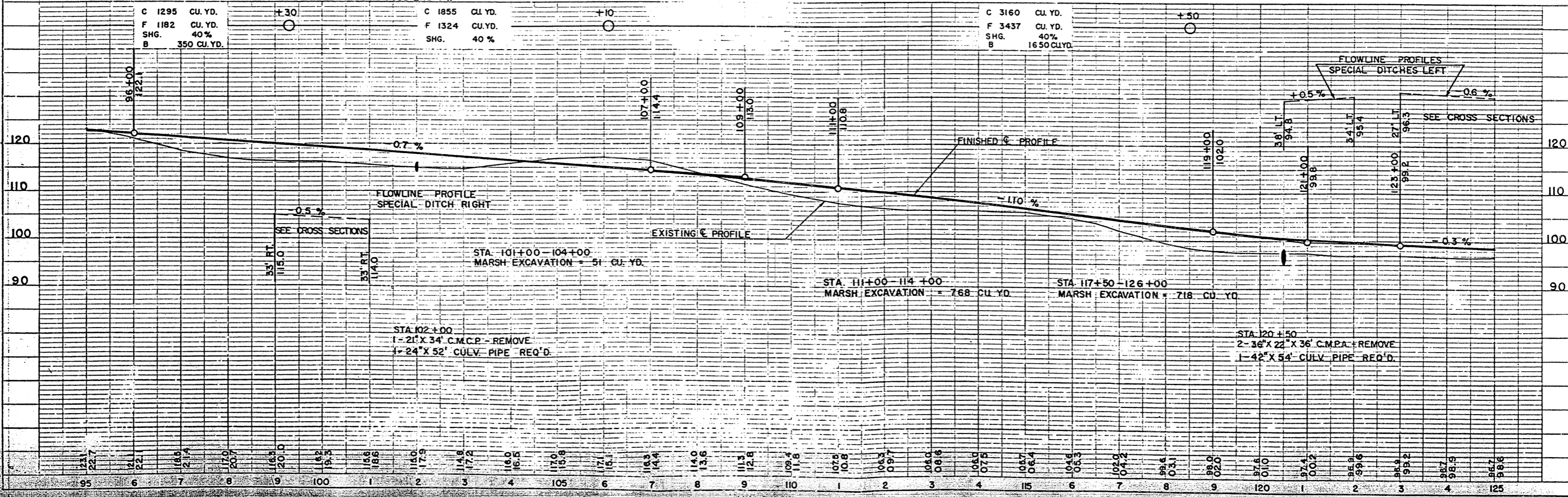
STA. 107+50 - 110+50
E.B.S. - FROST HEAVE
SEE CROSS SECTIONS
MATERIAL TO BE
USED ON FILL SLOPES



PI - 116+62
Δ - 0° 57' RT.
D - 0° 15'
T - 190.00'
L - 380'
SE - 0.015'/FT.
TRANS. 120'

BENCH MARKS			
NO	STATION	DESCRIPTION	ELEV.
11	100+45	SPIKE IN 9" MAPLE	53' RT 119.34
10	109+80	SPIKE IN 8" BLACK ASH	60' RT 111.94
9	124+70	SPIKE IN 9" ELM	75' RT 94.10

NET CENTER LINE LENGTH STA. 95+00 - 125+00 = 3000 LIN. FT.

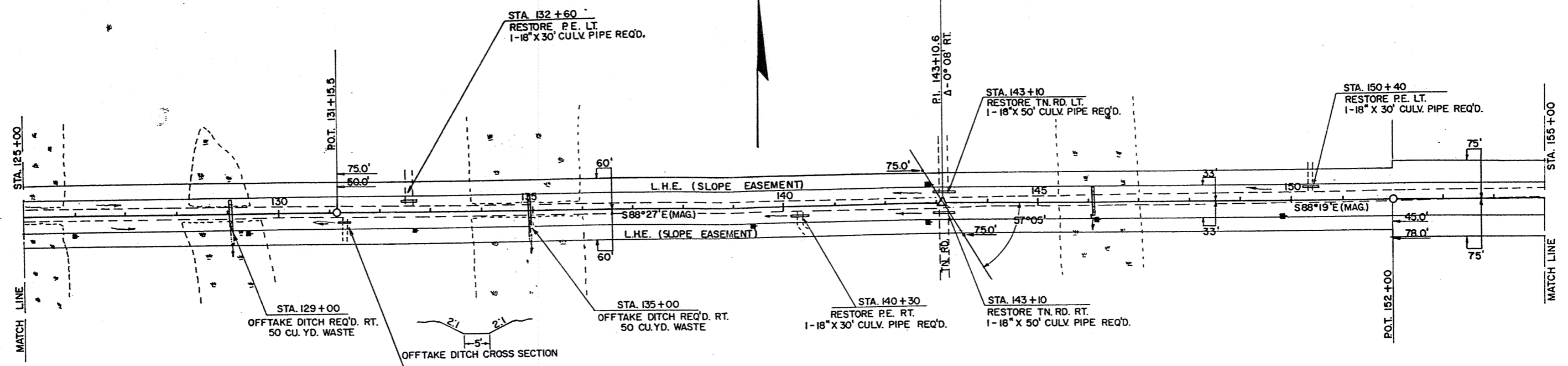


NOTE BOOK ALIGNED CHECKED
NO. 7/87

NOTE BOOK CHAINS CHECKED
NO. 7/87

DATE: 7/80
 SURVEYED BY: S. K. [unclear]
 PLAN NO. 147

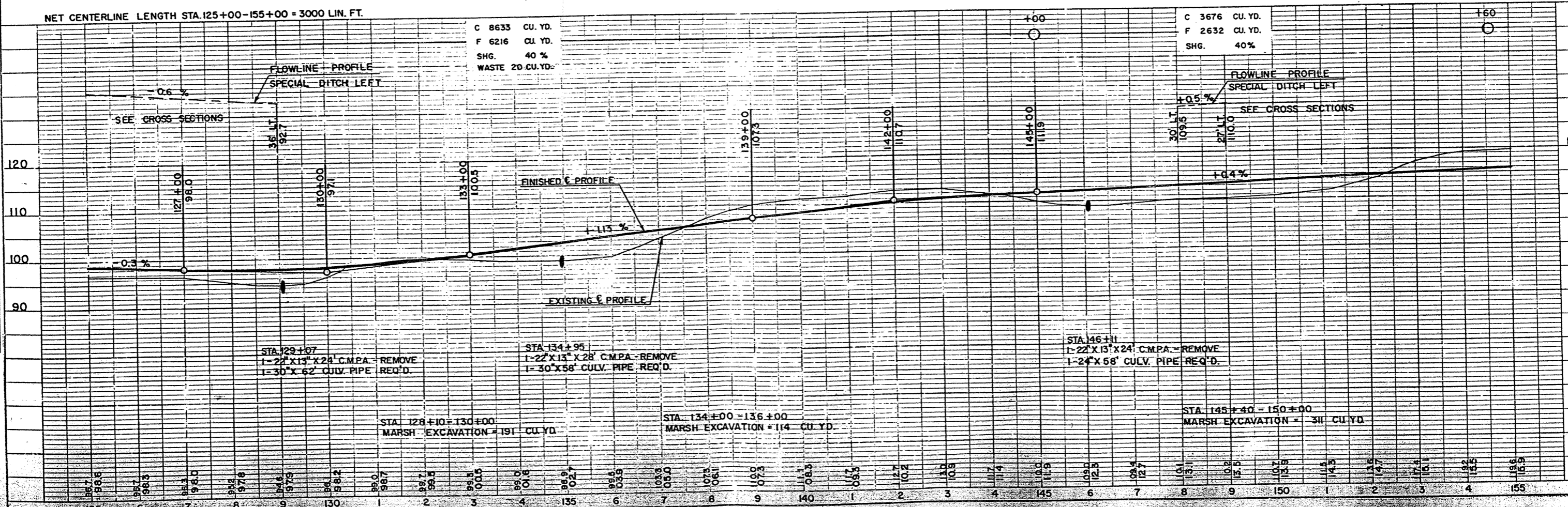
DATE: 7/80
 SURVEYED BY: S. K. [unclear]
 PROFILE NO. 147

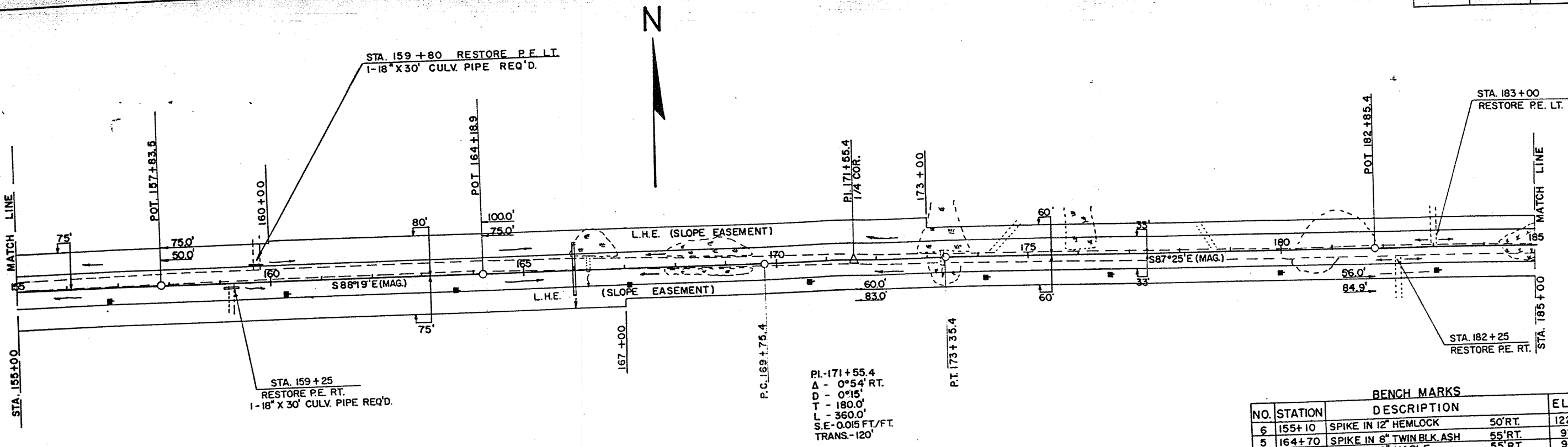


BENCH MARKS

NO.	STATION	DESCRIPTION	ELEV.
8	134+95	SPIKE IN 8" ASPEN	56' RT. 99.98
7	143+85	SPIKE IN 8" BLACK ASH	55' RT. 113.53

NET CENTERLINE LENGTH STA. 125+00-155+00 = 3000 LIN. FT.





BENCH MARKS

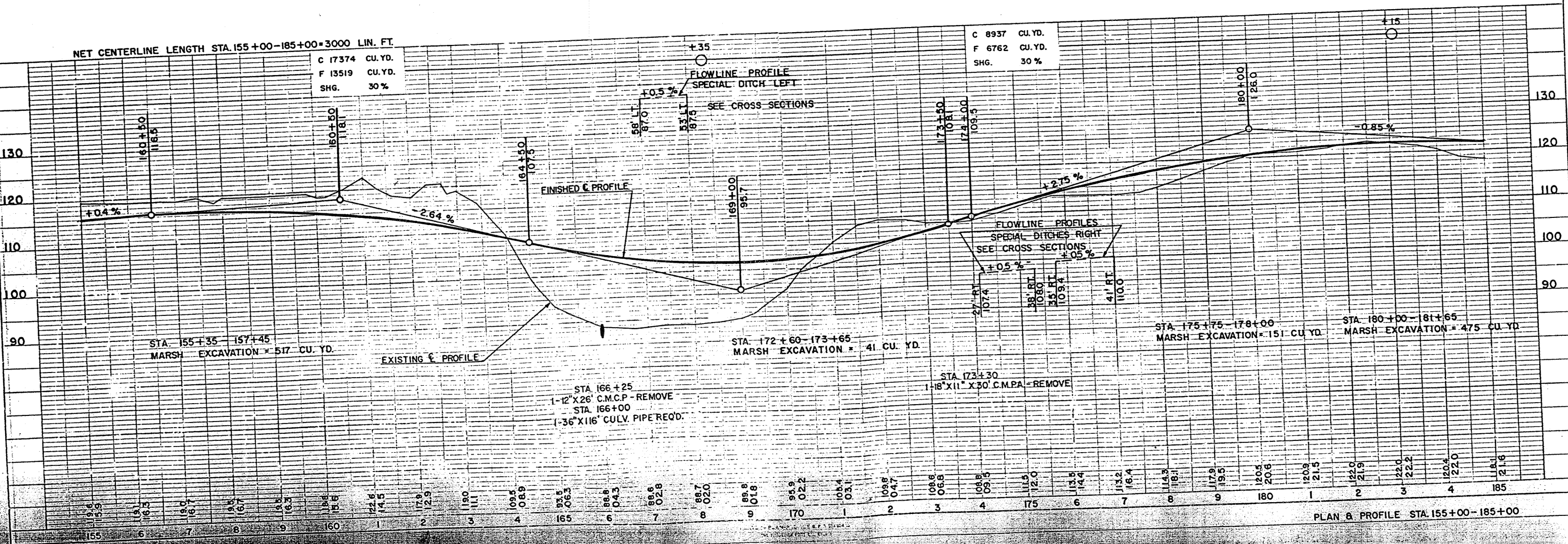
NO.	STATION	DESCRIPTION	ELEV.
6	155+10	SPIKE IN 12\" HEMLOCK	50' RT. 122.94
5	164+70	SPIKE IN 8\" TWIN BLK ASH	55' RT. 97.90
4	170+00	SPIKE IN 8\" MAPLE	55' RT. 90.89
3	180+10	SPIKE IN 8\" MAPLE	60' RT. 122.25

P.I. - 171 + 55.4
 Δ - 0°54' RT.
 D - 0°15'
 T - 180.0'
 L - 360.0'
 S.E. - 0.015 FT./FT.
 TRANS. - 120'

NET CENTERLINE LENGTH STA. 155+00-185+00 = 3000 LIN. FT.

C 17374 CU. YD.
 F 13519 CU. YD.
 SHG. 30%

C 8937 CU. YD.
 F 6762 CU. YD.
 SHG. 30%

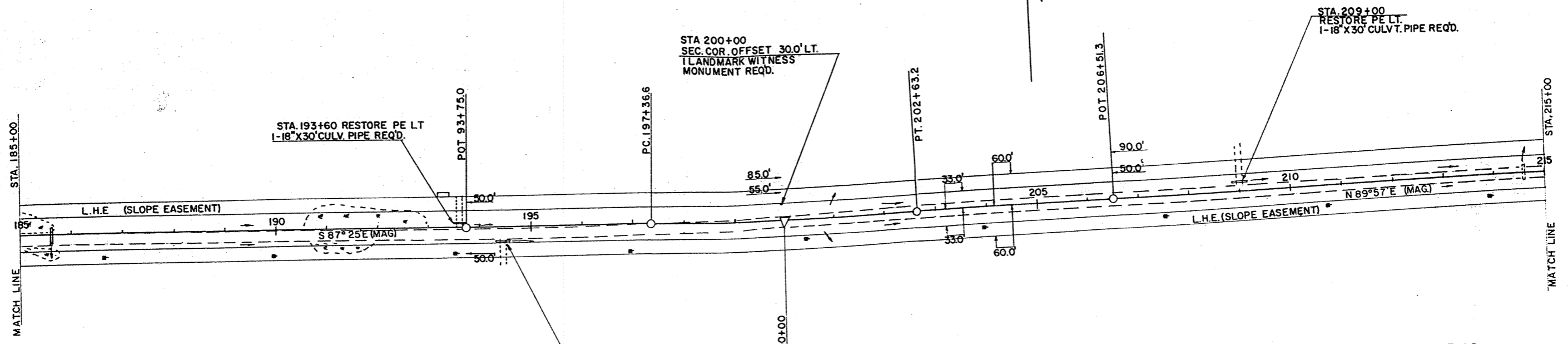


NOTE BOOK NO. 747
 ALIGNED CHECKED
 PL. 171 + 55.4
 1/4 COR.

NOTE BOOK NO. 747
 CHECKED
 STRUCTURE INDICATING CRK.

PLAN & PROFILE STA. 155+00-185+00

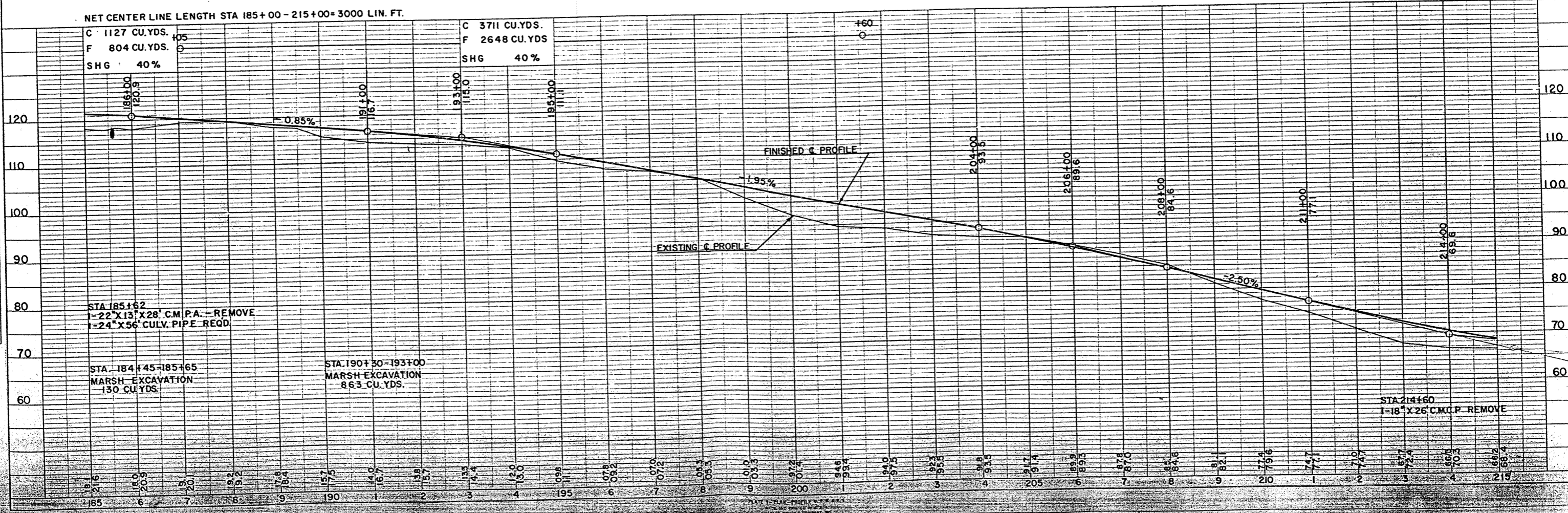
PI - 200+00
 Δ - 2° 38' LT.
 DT - 0° 30'
 L - 263.4'
 L' - 526.6'
 SE - 0.02/FT.
 TRANS - 120'



BENCH MARKS

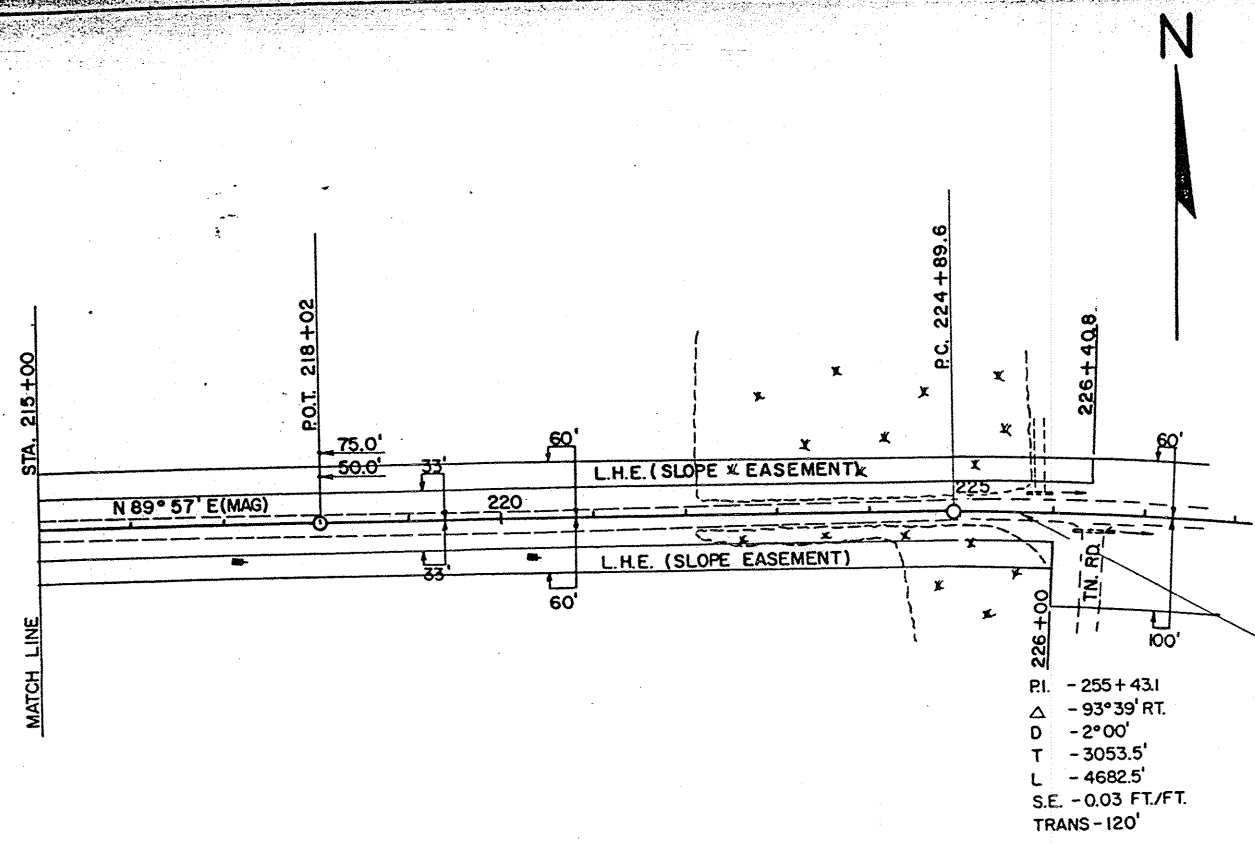
NO.	STATION	DESCRIPTION		ELEV.
2	188+55	SPIKE IN 20" HEMLOCK	70' RT.	120.20
1	200+00	SPIKE IN 16" MAPLE	116' LT.	100.00
2A	210+65	SPIKE IN 12" BASSWOOD	125' LT.	79.49

NET CENTER LINE LENGTH STA 185+00 - 215+00 = 3000 LIN. FT.



PLAN
 DATE: 11/60
 BY: [Signature]
 CHECKED: [Signature]
 NO. 130

PROFILE
 DATE: 11/60
 BY: [Signature]
 CHECKED: [Signature]
 NO. 130



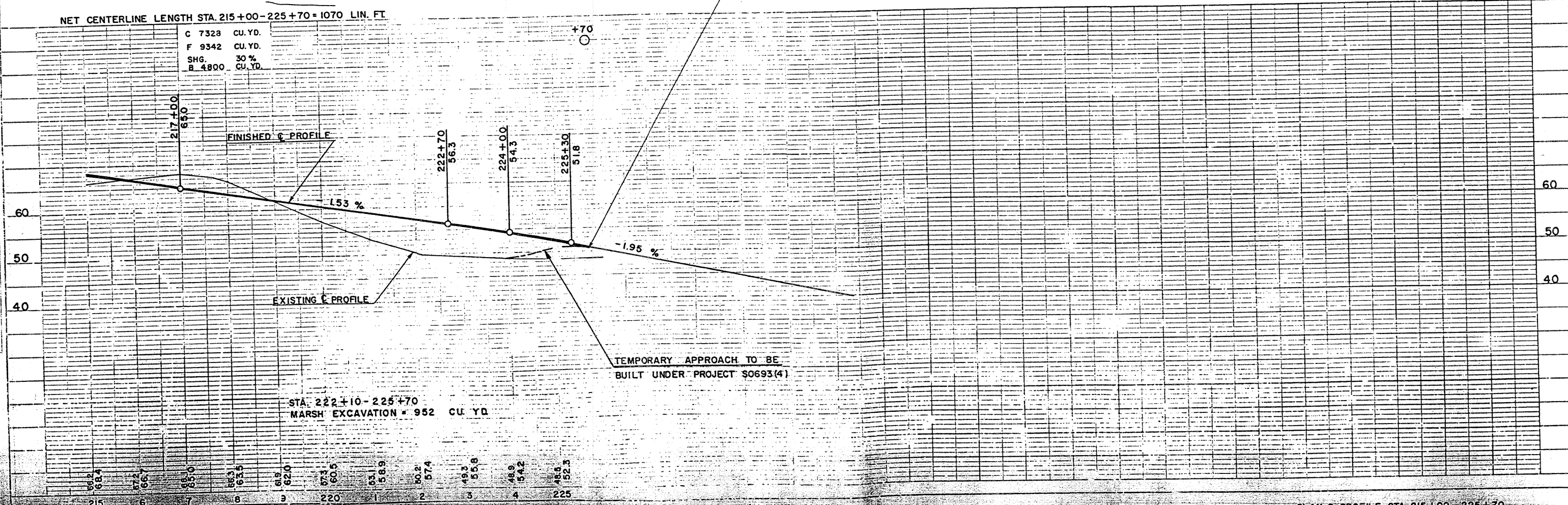
P.I. - 255+43.1
 Δ - 93°39' RT.
 D - 2°00'
 T - 3053.5'
 L - 4682.5'
 S.E. - 0.03 FT./FT.
 TRANS - 120'

STA. 225+70 END OF PROJ. S0693(6) =
 BEGINNING OF PROJ. S0693(4)

BENCH MARKS			
NO.	STATION	DESCRIPTION	ELEV.
3A	220+50	SPIKE IN 10" ASH 90' LT.	56.01

NET CENTERLINE LENGTH STA. 215+00-225+70 = 1070 LIN. FT.

C 7328 CU. YD.
 F 9342 CU. YD.
 SHG. 30 %
 R 4800 CU. YD.



STA. 222+10 - 225+70
 MARSH EXCAVATION = 952 CU. YD.

TEMPORARY APPROACH TO BE
 BUILT UNDER PROJECT S0693(4)