

Sheet Number	Total Sheets
1	18

STATE OF WISCONSIN

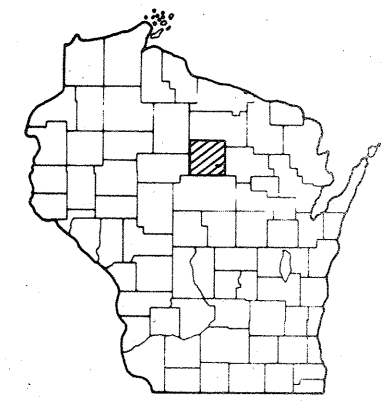
DEPARTMENT OF TRANSPORTATION
DIVISION OF HIGHWAYS

PLAN AND PROFILE OF PROPOSED

PINE RIVER BRIDGE
C.T.H. "C"
LINCOLN COUNTY

Index of Sheets

Sheet No. 1	Title
Sheet No. 2	Typical Cross Sections
Sheet No. 2	Estimate of Quantities
Sheet No. —	Miscellaneous Quantities
Sheet No. 3	Right of Way Plat
Sheet No. 4	Plan and Profile Sta. 22+50.25 to Sta. 23+17.75
Sheet No. 5-5.5	Standard Details
Sheet No. 6-12	Drainage Structures
Sheet No. 13	Design Templates
Sheet No. 13-14	Earthwork Estimates
Sheet No. 15-18	Cross Sections

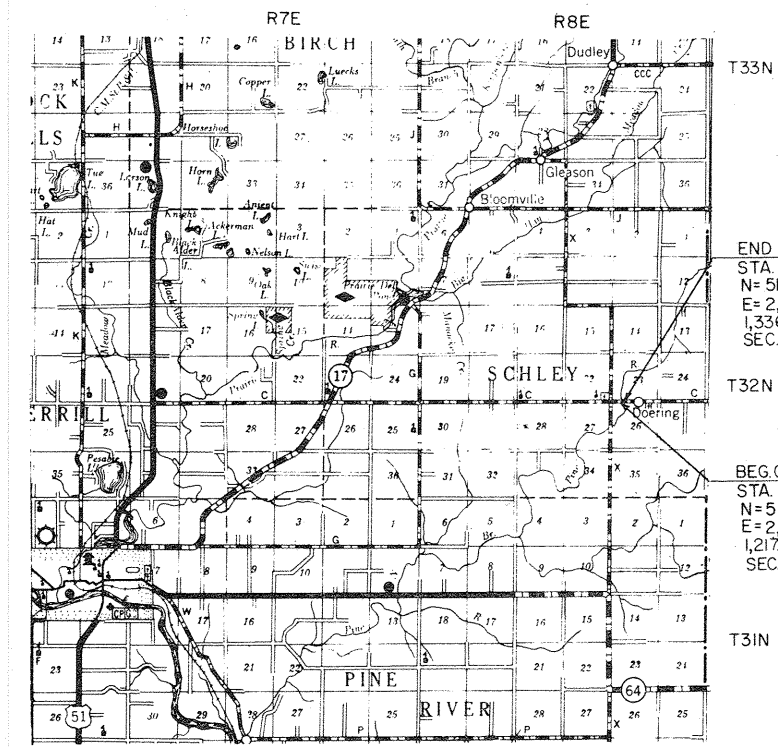


PROJECT IDENTIFICATION NUMBER	FEDERAL PROJECT DESIGNATION
9407 1 70	S 0192 (6)

Scales: Plan 1 in. = 100 ft.
Profile Hor. 1 in. = 100 ft. Vert. 1 in. = 10 ft.
Cross Sections Hor. 1 in. = 5 ft. Vert. 1 in. = 5 ft.

Design Designation

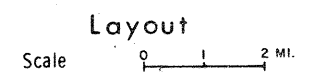
A. D. T. 1969	• 150
A. D. T. 1989	• 300
D. H. V.	• 45
D.	• 65%
T.	• 13%
V.	• 50MPH.



END OF PROJECT S 0192(6) / 9407-1-70
STA. 23+17.75 = STA. 324+24.50 PROJECT S 0192(4)
N = 511,530 (±200')
E = 2,138,780 (±200')
1,336.85' W OF THE N. 1/4 COR.
SEC. 26, T32N, R8E

BEG. OF PROJECT S 0192(6) / 9407-1-70
STA. 22+50.25 = STA. 323+58 PROJECT S 0192(4)
N = 511,530 (±200')
E = 2,138,710 (±200')
1,217.25' E. OF THE NW. COR.
SEC. 26, T32N, R8E

SCALED FROM U.S.G.S. TOPOGRAPHIC MAP (DOERING)
WISCONSIN, QUADRANGLE FOR IDENTIFICATION ONLY.
ALL COORDINATES SHOWN ON THIS PLAN ARE
REFERENCED TO THE WISCONSIN CO-ORDINATE
SYSTEM CENTRAL ZONE.



Total Net Length of Centerline • 0.013 Mi.

Conventional Signs

State Line	-----	Culverts in Place
County Line	-----	Culverts Required
Township or Range Line	-----	Drop Inlet
Section Line	-----	Power Pole
New Right of Way Line	-----	Telephone or Telegraph Pole
Present Right of Way Line	-----	Right of Way Markers
Wire Fence { Woven	-----	Reference Stake for Hubs Only
{ Barbed	-----	Marsh
Lot Line	-----	Hedge
Corporate or City Limits	-----	Trees
Property Line	-----	Ground Elevation	Datum Line 73.9
Traveled Way or P. E.	-----	Grade Elevation	Datum Line 76.16
Railroads	-----		
Base or Survey Line	-----		

STATE OF WISCONSIN
DEPARTMENT OF TRANSPORTATION
DIVISION OF HIGHWAYS

Surveyor I. SONNENBERG Note Book 273
District Computer R. HATLEBACK M. O. Checker L. L. ...
District Checker G. WINAT Correct

Correct:

Date 3/1/69 R. O. Schindler District Engineer
Recommended for Approval:

Date 4/7/69 E. J. Byssell Chief Design Engineer
Approved:

Date 4-9-69 J. J. Beuninger State Highway Engineer

U.S. DEPARTMENT OF TRANSPORTATION
FEDERAL HIGHWAY ADMINISTRATION
BUREAU OF PUBLIC ROADS
REGION 4 WISCONSIN DIVISION

Approved: _____
Date _____
Division Engineer

P. 141
MAY 20

ESTIMATE OF QUANTITIES

CONTRACT NO. 1 (9407 1 70)
STRUCTURE B-35-16

PROJECT ID	9407 1 70	SHEET NUMBER	2	TOTAL SHEETS	18
FEDERAL PROJECT DESIGNATION	S 0192(6)				
ESTIMATE OF QUANTITIES & TYPICAL SECTION SHEET FOR C.T.H. "C" LINCOLN COUNTY					

THIS PROJECT IS TO EXECUTED UNDER THE STANDARD SPECIFICATIONS FOR ROAD AND BRIDGE CONSTRUCTION OF THE WISCONSIN DIVISION OF HIGHWAYS - EDITION OF 1969, SUBMITTED FOR APPROVAL OCTOBER 23, 1968, FEDERAL AID REQUIRED CONTRACT PROVISIONS APPROVED OCTOBER 29, 1968, AND SPECIAL PROVISIONS AS ATTACHED TO PROPOSALS.

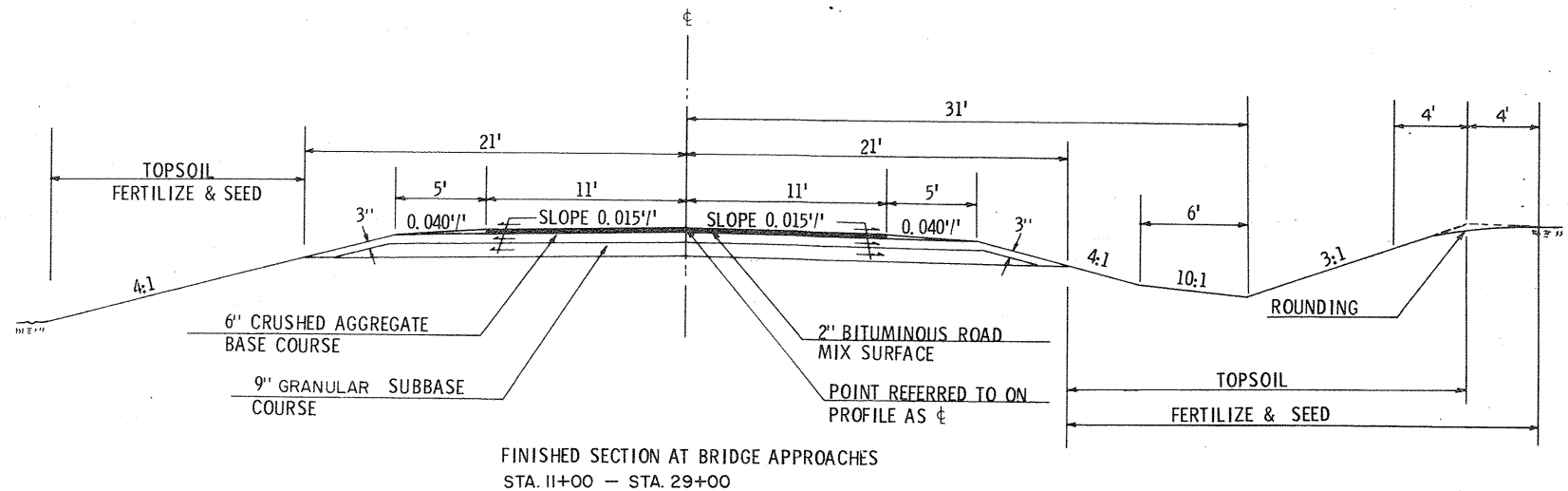
SEC. NO.	STATION TO STATION	NET LENGTH OF CENTER LINE	ITEM NO.														TOTAL	
			20351	20601	20901	50201	50303	50501	50621	50816	50820	50830	51315	60602	64201	LUMP SUM	LUMP SUM	
			REMOVING OLD BRIDGE, STATION 22 + 70	EXCAVATION FOR STRUCTURES, BRIDGES	GRANULAR BACKFILL	CONCRETE MASONRY, BRIDGES	PRESTRESSED GIRDER, I TYPE, 36-INCH	BAR STEEL REINFORCEMENT, BRIDGES	BEARING PADS	TREATED TIMBER PILING, DELIVERED	TREATED TIMBER PILING, DRIVEN	TREATED TIMBER TEST PILING, STRUCTURE B-35-16	TUBULAR RAILING, TYPE F	HEAVY RIPRAP	FIELD OFFICE, TYPE A			
	UNIT	LIN. FT.	LUMP SUM	CU. YD.	CU. YD.	CU. YD.	LIN. FT.	POUND	SQ. FT.	LIN. FT.	LIN. FT.	LUMP SUM	LIN. FT.	CU. YD.	LUMP SUM			
	22 + 50.25 - 23 + 17.75	67.50	1	45	15	105.3	404	20,090	12	490	490	1	144	220	1			
	STRUCTURE B-35-16																	
TOTAL		67.50	1	45	15	105.3	404	20,090	12	490	490	1	144	220	1			

THE BELOW LISTED QUANTITIES ARE NOT PART OF THE CONTRACT.

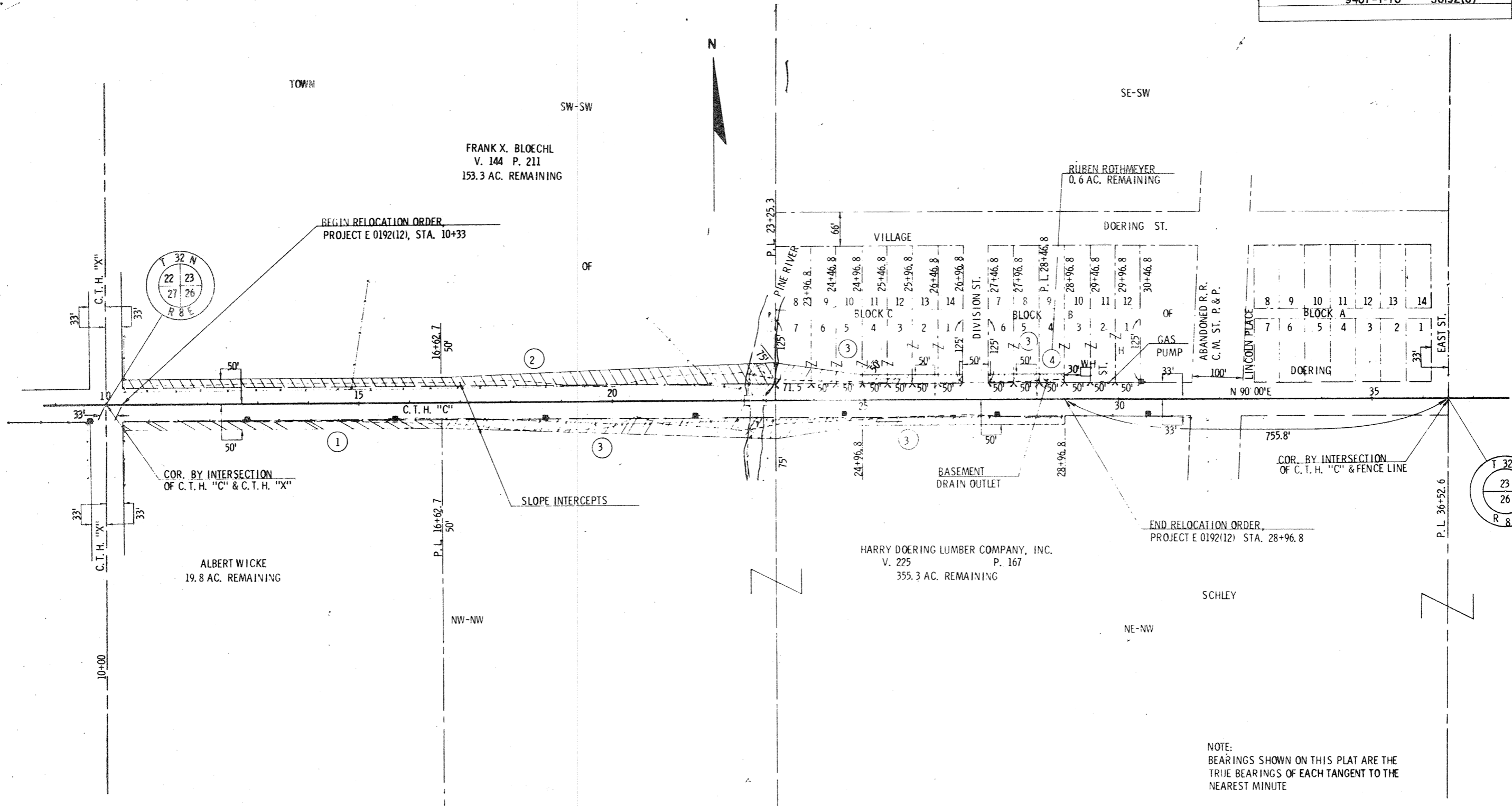
SEC. NO.	STATION TO STATION	NET LENGTH OF CENTER LINE	ITEM NO.																			TOTAL	
			20101	20104	20503	20801	21201	21301	30403	40401	40403	40406	52003	52061	61406	61408	61422	62505	62901	63001	63101	LUMP SUM	LUMP SUM
			CLEARING	GRUBBING	UNCLASSIFIED EXCAVATION	BORROW EXCAVATION	GRANULAR SUBBASE COURSE	FINISHING ROADWAY	CRUSHED AGGREGATE BASE COURSE	BITUMINOUS ROAD MIX SURFACE	BITUMINOUS MATERIAL FOR SURFACE COURSE	AGGREGATE FOR BITUMINOUS ROAD MIX SURFACE	CULVERT PIPE, CLASS III, 18-INCH	APRON ENDWALLS FOR CULVERT PIPE, 18-INCH	ANCHORAGES FOR STEEL PLATE BEAM GUARD	STEEL PLATE BEAM GUARD CLASS A	MARKER POSTS FOR RIGHT-OF-WAY	SALVAGED TOPSOIL	FERTILIZER	SEEDING	SODDING		
	UNIT	LIN. FT.	STATION	STATION	CU. YD.	CU. YD.	CU. YD.	LUMP SUM	CU. YD.	SQ. YD.	GALLON	CU. YD.	LIN. FT.	EACH	EACH	LIN. FT.	EACH	SQ. YD.	CWT.	SQ. YD.	SQ. YD.		
	11 + 00 TO STA. 29 + 00	1732.50	2	2	4,164	4,965	2,500	1	1,700	4,725	6,580	445	52	4	4	412	12	9,000	10	11,000	340		
	APPROACHES																						
TOTAL		1732.50	2	2	4,164	4,965	2,500	1	1,700	4,725	6,580	445	52	4	4	412	12	9,000	10	11,000	340		

APPLICABLE STANDARD DETAIL DRAWINGS

- 7-4.1.5 CONSTRUCTION BARRICADE
- 6-2.6.7 APRON ENDWALLS FOR CULVERT PIPE AND PIPE ARCH.
- 7-1.3.5 MARKER POST AND MARKER POST FOR RIGHT OF WAY.
- 7-2.4.13 STEEL PLATE BEAM GUARD AND STEEL BEAM MEDIAN GUARD.



HIGHWAY	ROUTE AND MILEPOSTS	CLASS AND AGREEMENT		B.P.R. REGION DIVISION	SHEET NUMBER	TOTAL SHEETS
		STATE	FEDERAL			
35.6	192.0		3.12	4	4.1	
PROJECT					3	18
9407-1-70					SO192(6)	



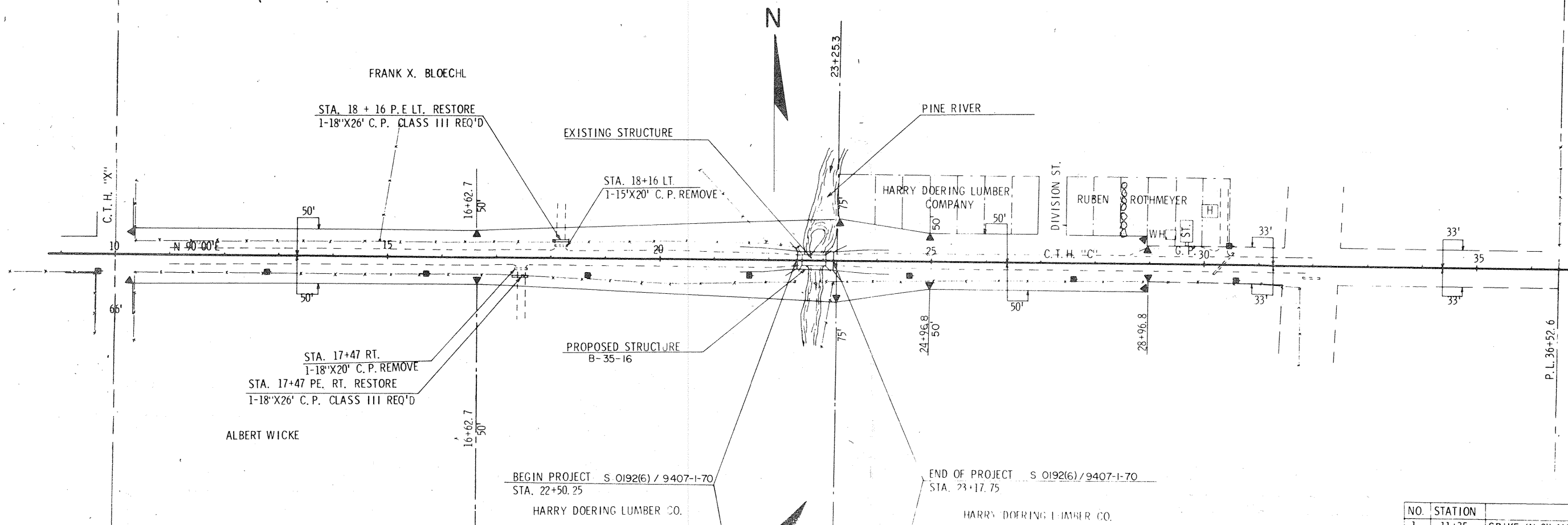
NOTE:
BEARINGS SHOWN ON THIS PLAT ARE THE
TRUE BEARINGS OF EACH TANGENT TO THE
NEAREST MINUTE

STATE HIGHWAY COMMISSION OF WISCONSIN
PLAT OF RIGHT OF WAY REQUIRED
 PROJECT E 0192(12)

SCALE
 0 100 200

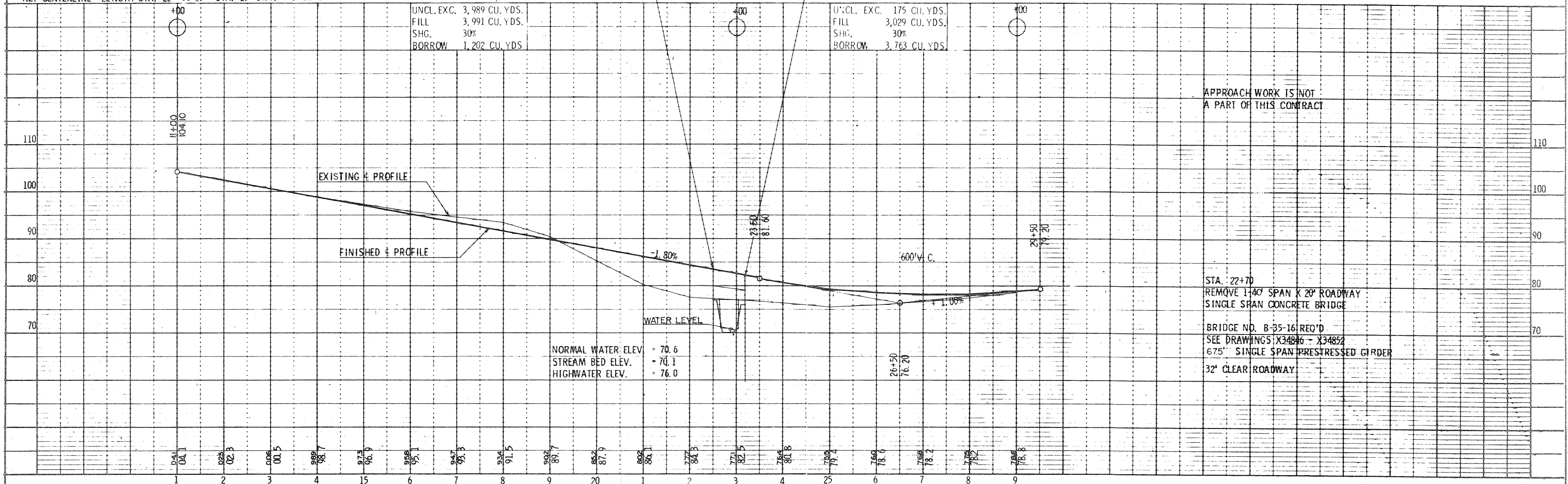
RIGHT OF WAY STA. 10+33 - STA. 36+52.6

DATE: AUGUST 9, 1966



BENCH MARKS			
NO.	STATION	DESCRIPTION	ELEV.
1	11+35	SPIKE IN 8" MAPLE	116' RT. 100.00
2	21+16	SPIKE IN 6" POPLAR	94' LT. 75.17
3	29+63	MARK IN S.W. COR. UPPER CONC. STEP	36' LT. 80.13

NET CENTERLINE LENGTH STA. 22+50.25 - STA. 23+17.75 = 675.0' LIN. FT.



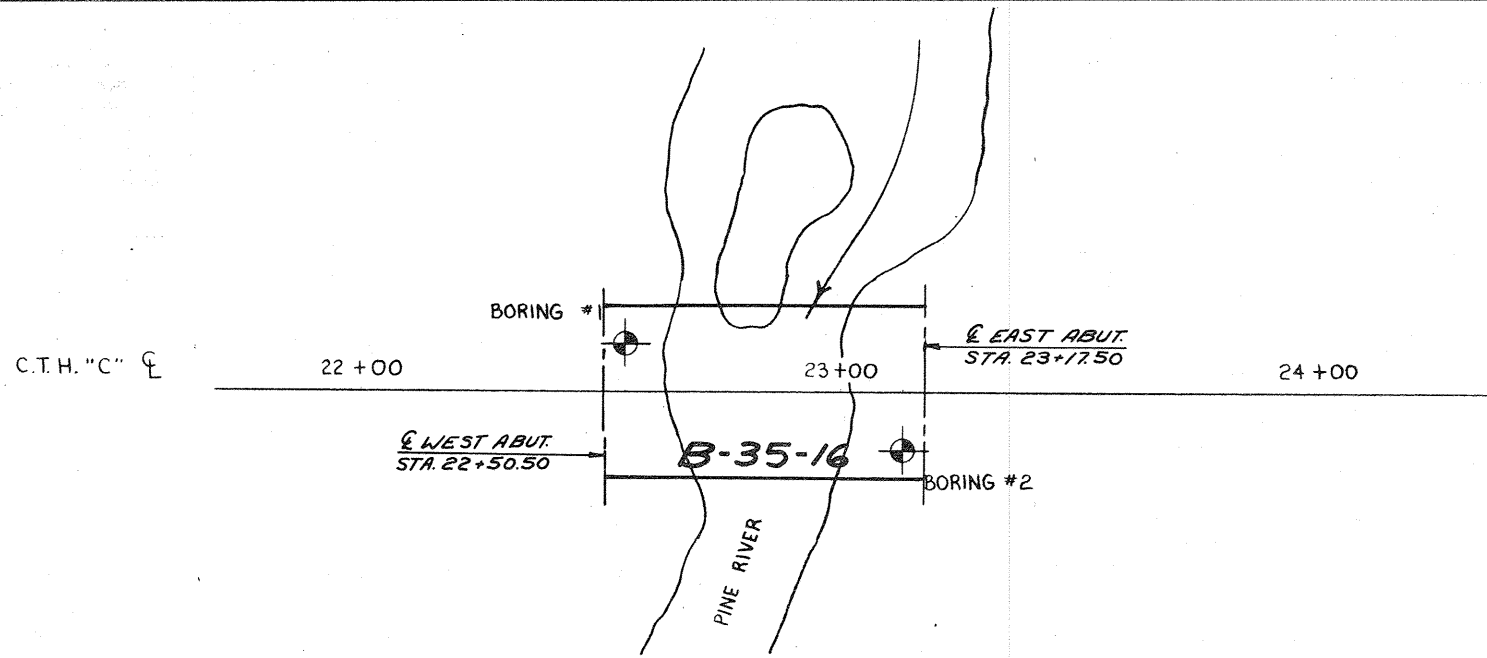
APPROACH WORK IS NOT A PART OF THIS CONTRACT

STA. 22+70
REMOVE 140' SPAN X 20' ROADWAY
SINGLE SPAN CONCRETE BRIDGE
BRIDGE NO. B-35-16 REQ'D
SEE DRAWINGS X34846 - X34852
675' SINGLE SPAN PRESTRESSED GIRDER
32' CLEAR ROADWAY

PLATE 1 - PLAN - PROFILE

S. P. R. DIVISION	PROJECT	SHEET NO.	TOTAL SHEETS
4	SO192(6)	12	18

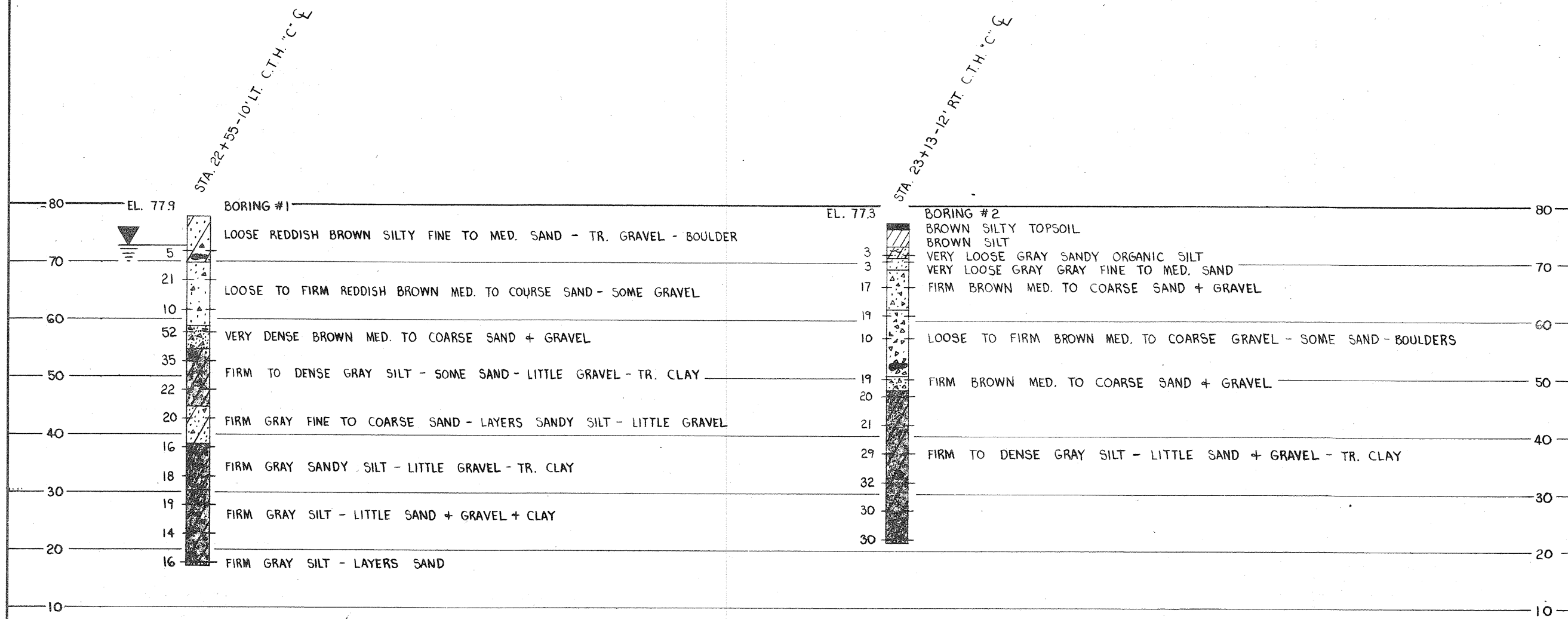
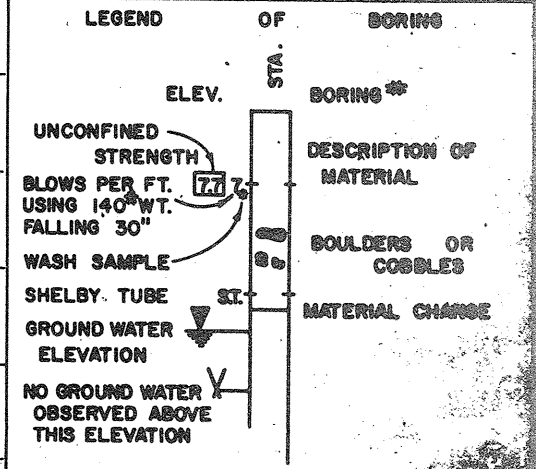
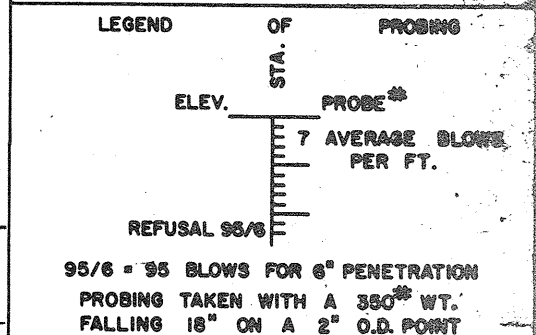
9407-1-70



SUBSURFACE EXPLORATION FOR FOUNDATION DESIGN

FOR THE DESIGN OF THE STRUCTURE FOUNDATION, TO OBTAIN RELATIVE DATA CONCERNING THE CHARACTER OF MATERIAL IN AND UPON WHICH THE FOUNDATION MIGHT BE BUILT, BORINGS AND/OR SOUNDINGS WERE MADE AT POINTS APPROXIMATELY AS INDICATED ON THIS DRAWING WITH THE LOG OF SUCH EXPLORATION DATA AS INTERPRETED FOR SUCH DESIGN PURPOSE AS SHOWN. THE EXPLORATIONS WERE MADE BY ORDINARY AND CONVENTIONAL METHODS AND CARE DEEMED ADEQUATE FOR SUCH PURPOSE. HOWEVER, SINCE IT IS A MATTER OF COMMON KNOWLEDGE THAT THE EXACT CHARACTER OF ANY MATERIAL AND ITS REACTION IS DIFFICULT TO DETERMINE FROM SUCH SUBSURFACE EXPLORATION (AND THAT THE KIND AND CHARACTER OF MATERIAL AT THE SITE WHERE THE FOUNDATIONS ARE BUILT MAY VARY SUBSTANTIALLY FROM THAT INDICATED BY THE LOG THEY ARE MADE AVAILABLE TO THE BIDDERS SIMPLY FOR WHAT THEY ARE WORTH, WITHOUT ANY WARRANTY, EXPRESSED OR IMPLIED THAT THE MATERIAL TO BE ENCOUNTERED IN BUILDING THE FOUNDATION WILL CONFORM THEREWITH. IF THE LOG IS USED BY THE CONTRACTOR IN MAKING HIS BID, IT IS HEREBY EXPRESSLY STIPULATED THAT THE COMMISSION ACCEPTS NO RESPONSIBILITY FOR SAID USE.

UNLESS OTHERWISE SPECIFIED THE BLOWS PER FOOT AT THE LOCATIONS INDICATED ARE BASED ON DRIVING A 2" O.D. x 1.4" I.D. SPLIT SPOON SAMPLER WITH A 140 LB. HAMMER HAVING A FREE FALL OF 30". THE BLOW COUNT IS TAKEN IN UNDISTURBED SOIL IMMEDIATELY BELOW A CAGED OR OPEN HOLE ELIMINATING SIDE FRICTION ON THE DRIVE PIPE.



STATE HIGHWAY COMMISSION

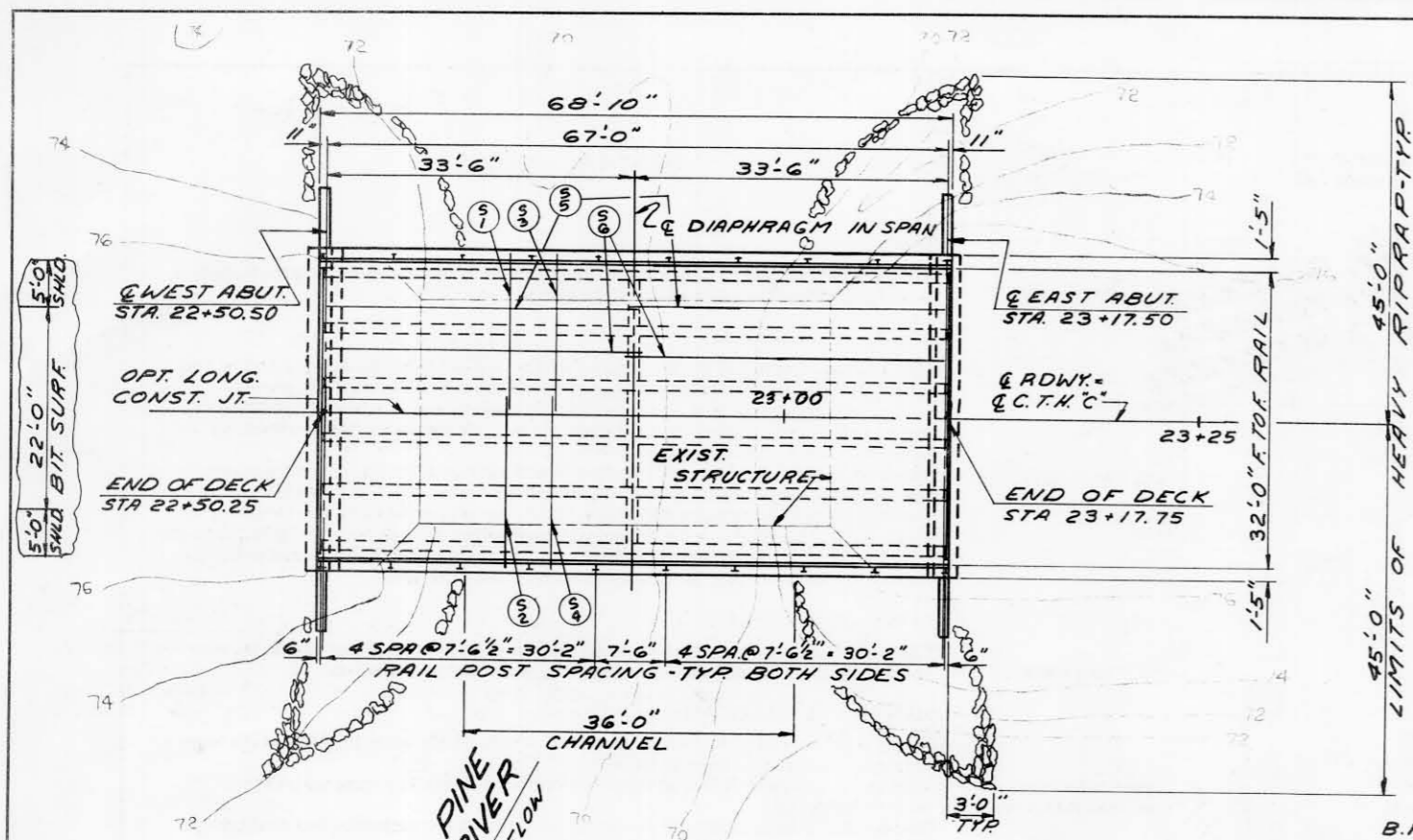
SUBSURFACE EXPLORATION

DESIGN SPEC. _____ LOADING _____ COST SPEC. _____

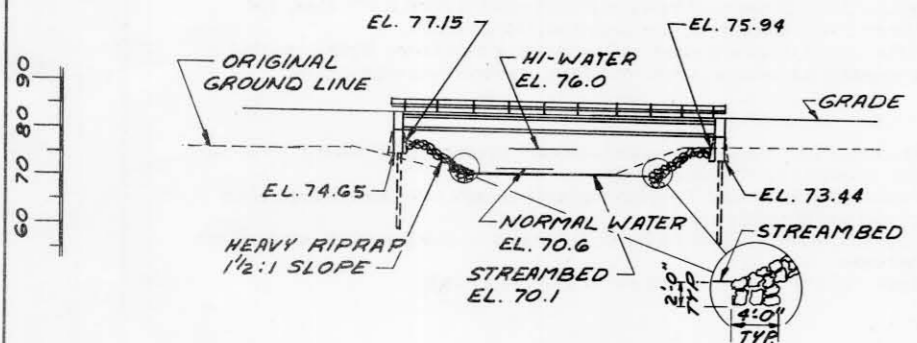
DATE 2-22-64 DESIGN _____ DRAWN (6) _____ CHECK JLM

STRUCTURE B-35-16 SHEET 7 of 7

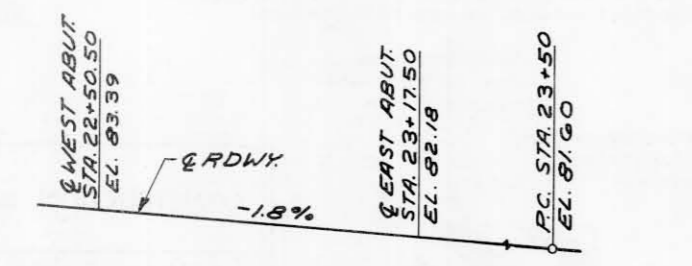
COUNTY & HIGHWAY	ROUTE & SECTION	CLASS & AGREEMENT	S. P. R. DIVISION	PROJECT	SHEET NO.	TOTAL SHEETS
35.6	192.0	3.12	4	SO192(6)	6	18



PLAN
SINGLE SPAN 36" PRESTRESSED GIRDER SUPERSTRUCTURE.



ELEVATION



PROFILE GRADE LINE - C.T.H. 'C'

BENCH MARK

NO.	STATION	DESCRIPTION	ELEV.
2	21+16	SPIKE IN 6" POPLAR	94' LT. 75.17

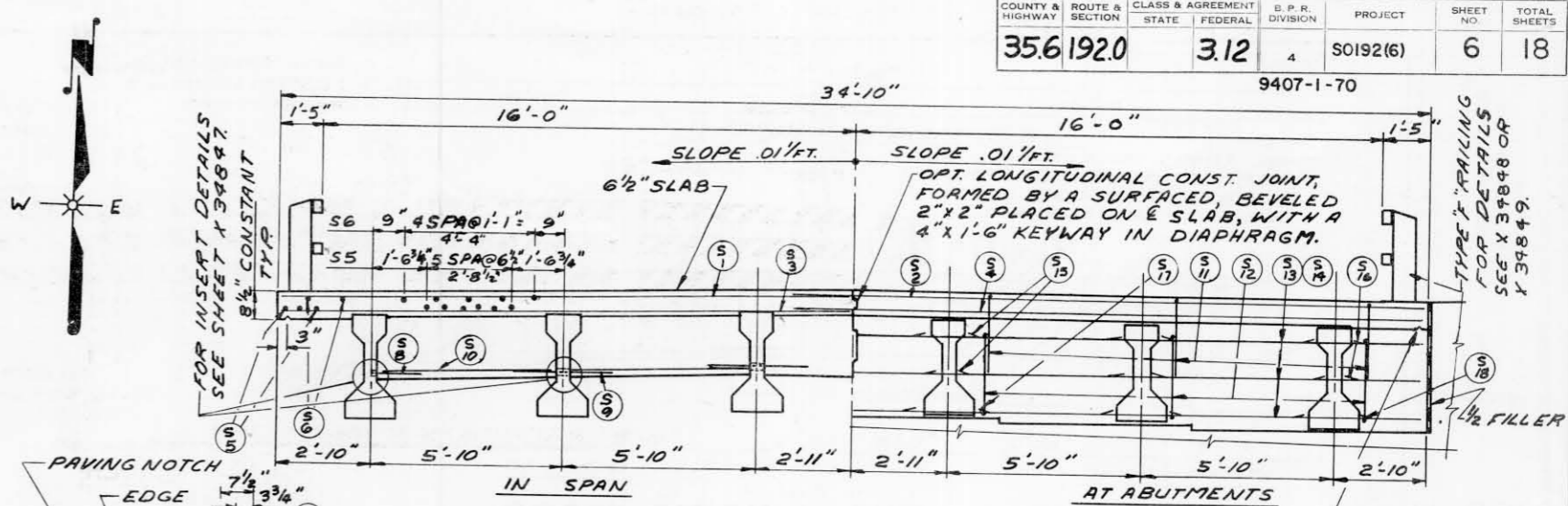
HYDRAULIC DATA
WATERWAY AREA = 265 S.F.

TRAFFIC DATA
R.D.T. = 285

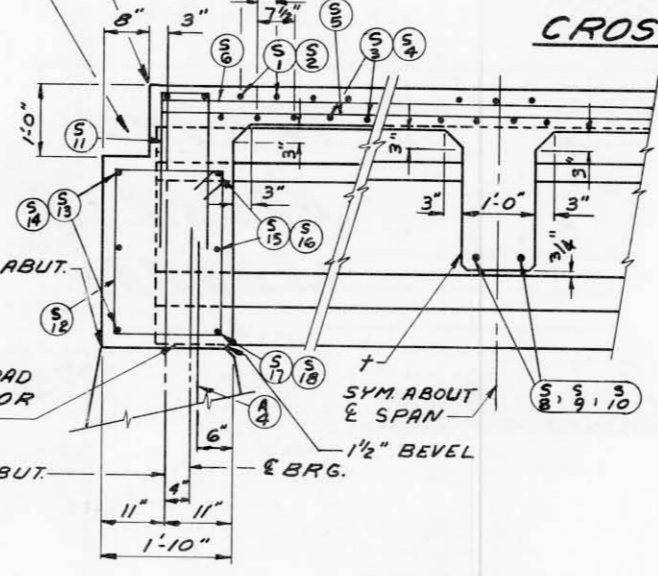
TOTAL ESTIMATED QUANTITIES

BID ITEMS	UNIT	SUPER.	W. ABUT.	E. ABUT.	TOTAL
REMOVING OLD BRIDGE	LUMP SUM				1
EXCAVATION FOR STRUCTURES	C.Y.		15	30	45
GRANULAR BACKFILL	C.Y.		5	10	15
CONCRETE MASONRY	C.Y.	63.3	210	210	105.3
BAR STEEL REINFORCEMENT	L.B.	18,010	1,040	1,040	20,090
PRESTRESSED GIRDER, 36" I TYPE	L.F.	404			404
* TREATED TIMBER TEST PILING	LUMP SUM				1
TREATED TIMBER PILING, DELIVERED	L.F.		245	245	490
TREATED TIMBER PILING, DRIVEN	L.F.		245	245	490
BEARING PADS	S.F.	12			12
HEAVY RIPRAP	C.Y.		110	110	220
TUBULAR RAILING, TYPE 'F'	L.F.	144			144
NON-BID ITEMS					
FILLER	SIZE	1/4" x 1/2"			1/4" x 1/2"

* 2-45'-0" TREATED TIMBER TEST PILES REQ'D. DRIVE ONE 45'-0" TEST PILE AT EACH ABUTMENT.



CROSS SECTION THRU ROADWAY
LOOKING EAST



PART LONGITUDINAL SECTION

GENERAL NOTES
DRAWINGS SHALL NOT BE SCALED.
BAR STEEL REINFORCEMENT SHALL BE IMBEDDED 2" CLEAR UNLESS OTHERWISE SHOWN OR NOTED.

AT THE ABUTMENTS, ALL EXCAVATED SPACES NOT OCCUPIED BY THE NEW ABUTMENTS SHALL BE BACKFILLED WITH GRANULAR BACKFILL. PAYMENT WILL BE MADE ONLY FOR MATERIAL ACTUALLY PLACED WITHIN THE LIMITS SPECIFIED FOR "EXCAVATION FOR STRUCTURES."
THE SLOPES IN FRONT OF THE ABUTMENTS SHALL BE COVERED WITH HEAVY RIPRAP AS SHOWN ON THIS SHEET AND ON SHEET X34850.

DESIGN DATA

LIVELOAD
H-20

ALLOWABLE DESIGN STRESSES
CONCRETE MASONRY GRADE "AA" $f_c = 1,400$ P.S.I.
BAR STEEL REINFORCEMENT $f_s = 20,000$ P.S.I.
PRESTRESSED GIRDERS
CONCRETE MASONRY $f_c = 6,000$ P.S.I.
STRANDS - 1/2" ϕ WITH ULTIMATE TENSILE STRENGTH OF 270,000 P.S.I.

FOUNDATION DATA
THE ABUTMENTS ARE TO BE SUPPORTED ON TREATED TIMBER PILES, ESTIMATED 35'-0" LONG AND DRIVEN TO A MINIMUM BEARING CAPACITY OF 24 TONS PER PILE.

SUPERSTRUCTURE NOTES

TOP AND BOTTOM TRANSVERSE BARS IN SLAB SHALL BE SUPPORTED BY CONTINUOUS BAR CHAIRS ON OR ADJACENT TO EACH GIRDER AND BY INDIVIDUAL BAR CHAIRS AT 3'-0" CENTERS APPROXIMATELY MIDWAY BETWEEN GIRDERS.
† DIAPHRAGM TO EXTEND BETWEEN INSIDE FACES OF EXTERIOR GIRDERS.

LIST OF DRAWINGS

1. GENERAL PLAN SUPERSTRUCTURE X34846
2. 36" PRESTRESSED GIRDER DETAILS X34847
3. ALUMINUM RAILING, TYPE 'F' X34848
4. STEEL RAILING, TYPE 'F' X34849
5. ABUTMENTS X34850
6. BILL OF BARS X34851
7. SUBSURFACE EXPLORATION X34852

REVISION	STATE HIGHWAY COMMISSION OF WISCONSIN		
	GENERAL PLAN SUPERSTRUCTURE		
	CD. LINCOLN	TH. SCHLEY	STA. 22+50
	SECTION 23+26	TOWN 32N	RANGE 6E
	DESIGN SPEC. A.A.S.H.O. '65	LOADING H-20	CONST. 1969
	DATE 4-22-64	DESIGN J.R.P.	DRAWN PAGE
	APPROVED <i>W. A. Klein</i> 2-24-69		