

Sheet Number	Total Sheets
1	8

STATE OF WISCONSIN  
 DEPARTMENT OF TRANSPORTATION  
 DIVISION OF HIGHWAYS

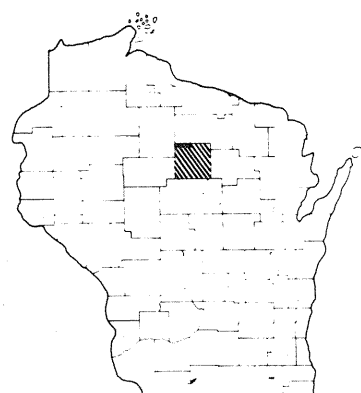
PLAN AND PROFILE OF PROPOSED

C.T.H. "YY" - C.T.H. "CC"  
 U.S.H. 8  
 LINCOLN COUNTY  
 PROJECT T 021-2(24)

Scales  
 Profile Hor. 1 in. = 100 ft. Vert. 1 in. = 10 ft.  
 Cross Sections Hor. 1 in. = 100 ft. Vert. 1 in. = 10 ft.

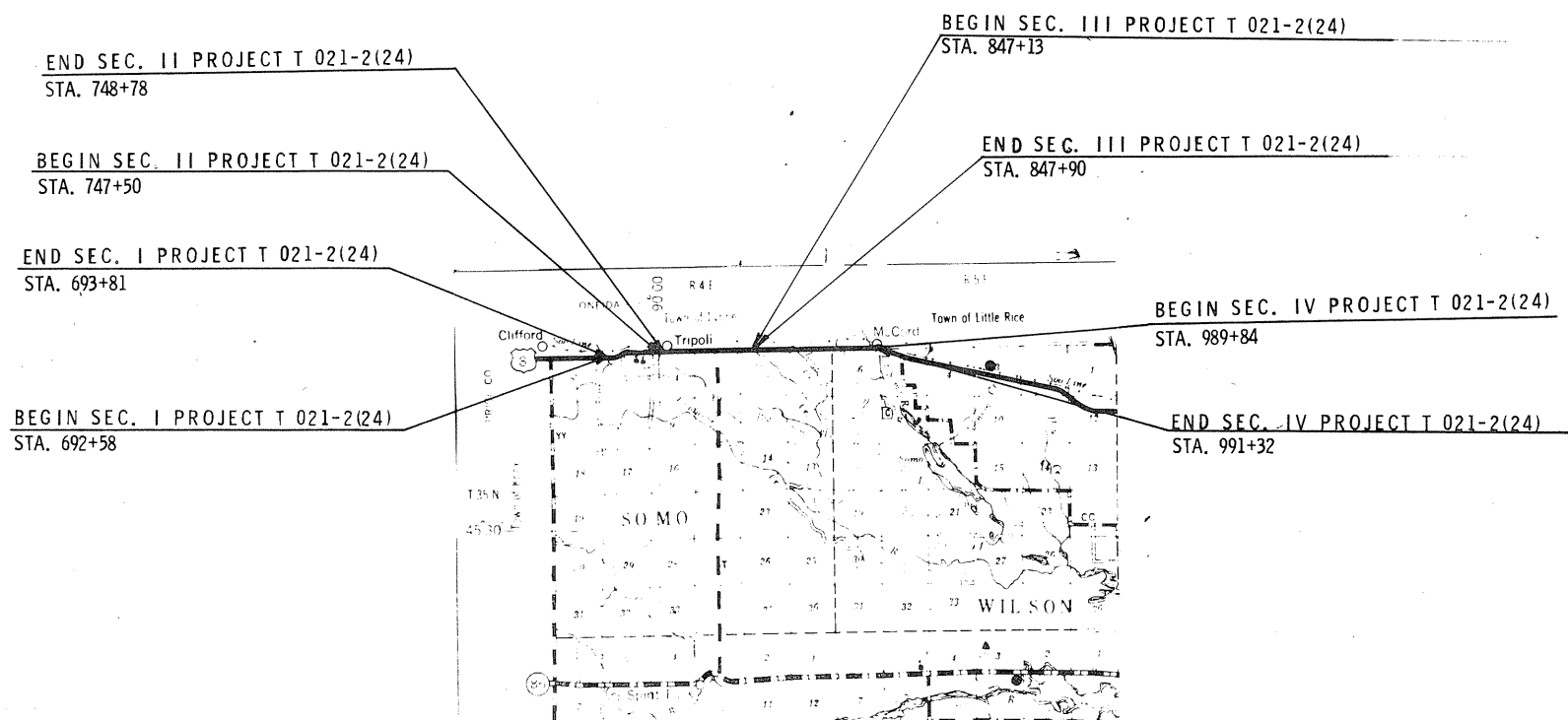
Index of Sheets

Sheet No.	1	Title
Sheet No.	2	Typical Cross Sections
Sheet No.	2	Estimate of Quantities
Sheet No.	—	Miscellaneous Quantities
Sheet No.	—	Right of Way Plat
Sheet No.	3-7	Plan and Profile Sta.
Sheet No.	8-8.4	Standard Details
Sheet No.	—	Drainage Structures
Sheet No.	—	Cross Sections



Design Designation

A.D.T.	1968	=	1,200
A.D.T.	1988	=	3,000
D.H.V.		=	360
D.		=	65%
T.		=	15%
V.		=	70 M. P. H.



Conventional Signs

State Line	-----	Culverts in Place	—○—
County Line	-----	Culverts to be built	—○—
Township or Range Line	-----	Drop Inlet	—○—
Section Line	-----	Power Pole	—○—
New Right of Way Line	-----	Telephone or Telegraph Pole	—○—
Present Right of Way Line	-----	Right of Way Marker	—○—
Wire Fence	-----	Grade Elevation	—○—
Woven	-----	Grade Elevation	—○—
Barbed	-----		
Lot Line	-----		
Corporate or City Limits	-----		
Property Line	-----		
Traveled Way or P.E.	-----		
Railroads	-----		
Base of Survey Line	-----		

Layout

1" = 2 MI.

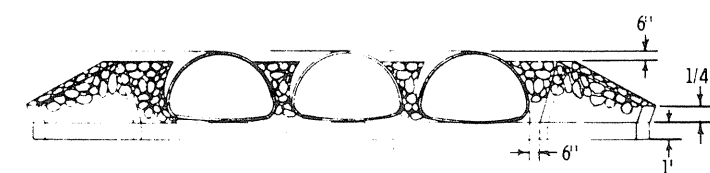
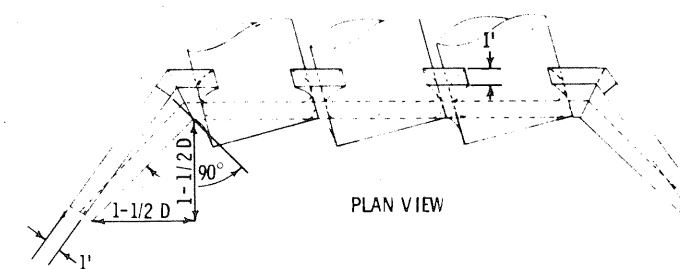
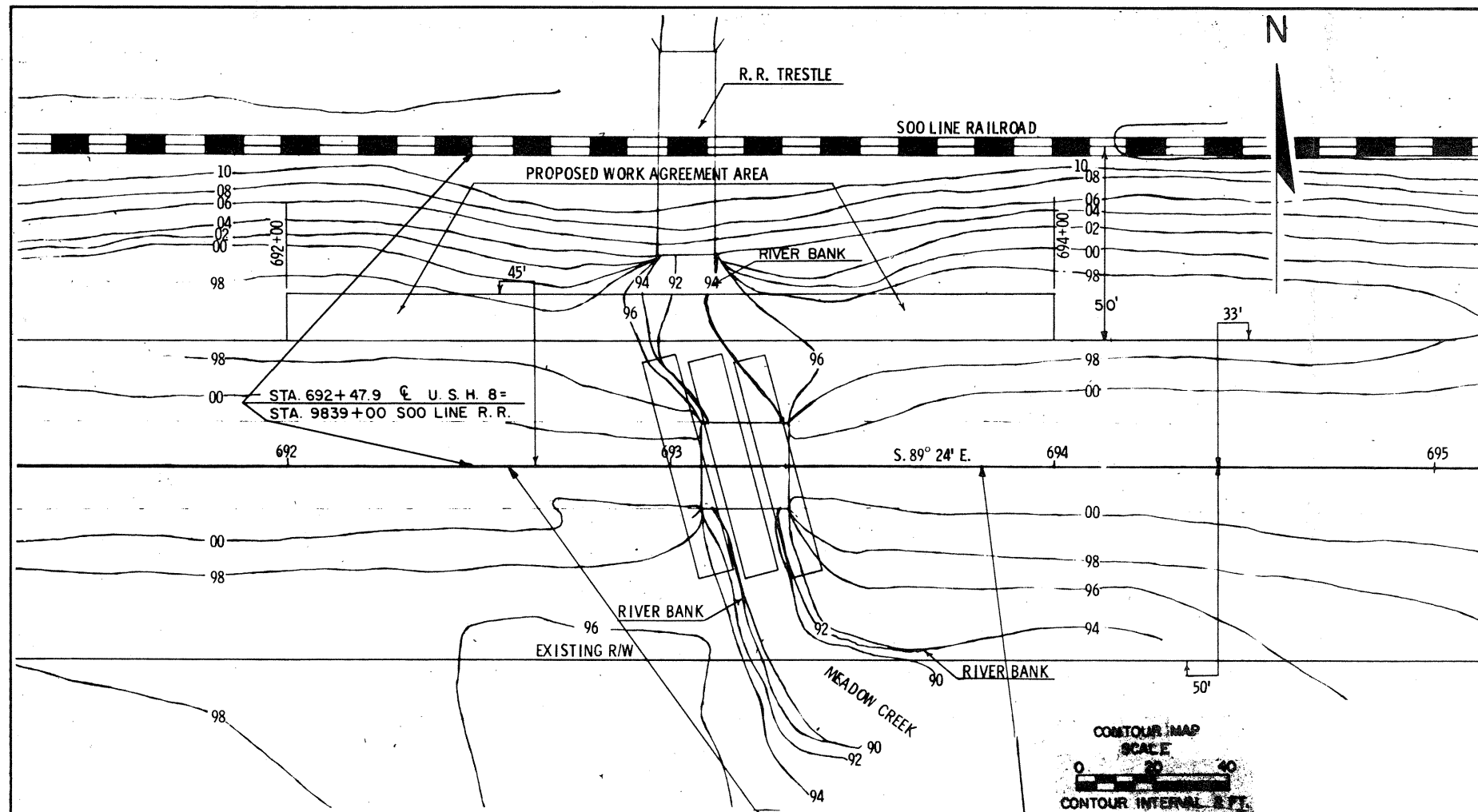
Total Net Length of Centerline = 0.090 Mi.

N

STATE OF WISCONSIN DEPARTMENT OF TRANSPORTATION DIVISION OF HIGHWAYS	
Surveyor <b>T. SONNENBERG</b>	Note Book <b>335</b>
District Computer <b>E. SEIDLER</b>	M.O. Checker <b>W. H. B.</b>
District Checker <b>G. WINAT</b>	Correct
Correct:	
Date <b>4/25/68</b>	<i>Max Smith</i> District Engineer
Recommended for Approval:	
Date <b>4/25/68</b>	<i>E.J. Byrd</i> Chief Design Engineer
Approved:	
Date <b>4/25/68</b>	<i>A. Burmeister</i> State Highway Engineer
DEPARTMENT OF TRANSPORTATION FEDERAL HIGHWAY ADMINISTRATION BUREAU OF PUBLIC ROADS WISCONSIN DIVISION	
Approved:	
Date: _____ Division Engineer	

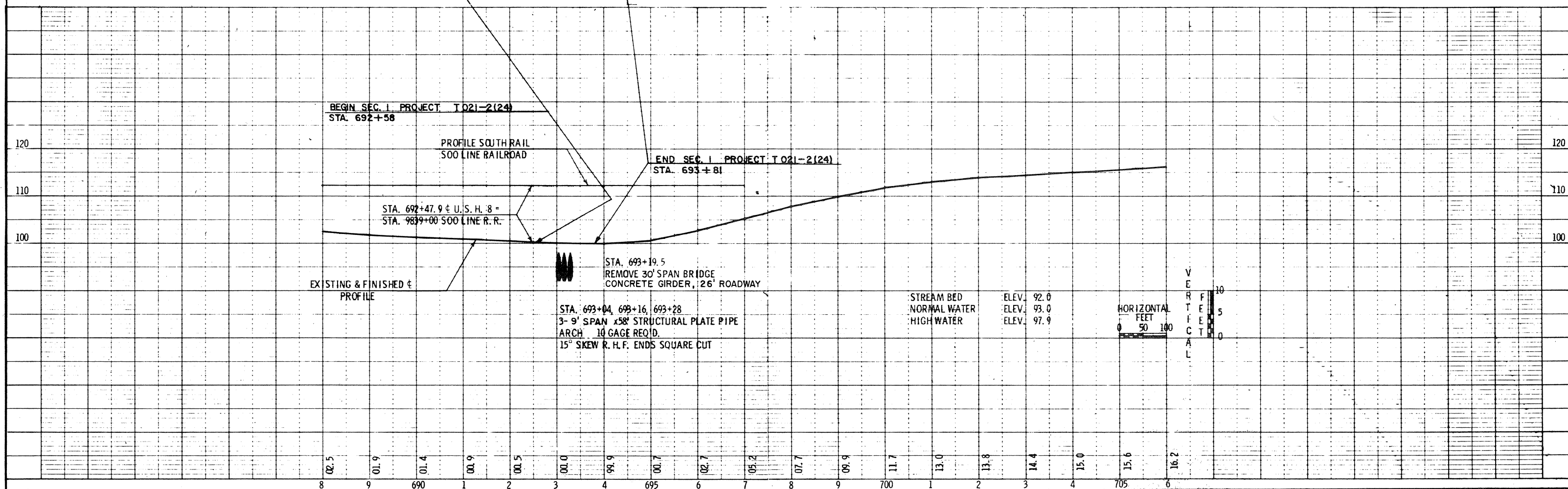
B. P. R. DIVISION	PROJECT	SHEET NUMBER	TOTAL SHEETS
	T 021-2(24)	4	8

1580-2-70



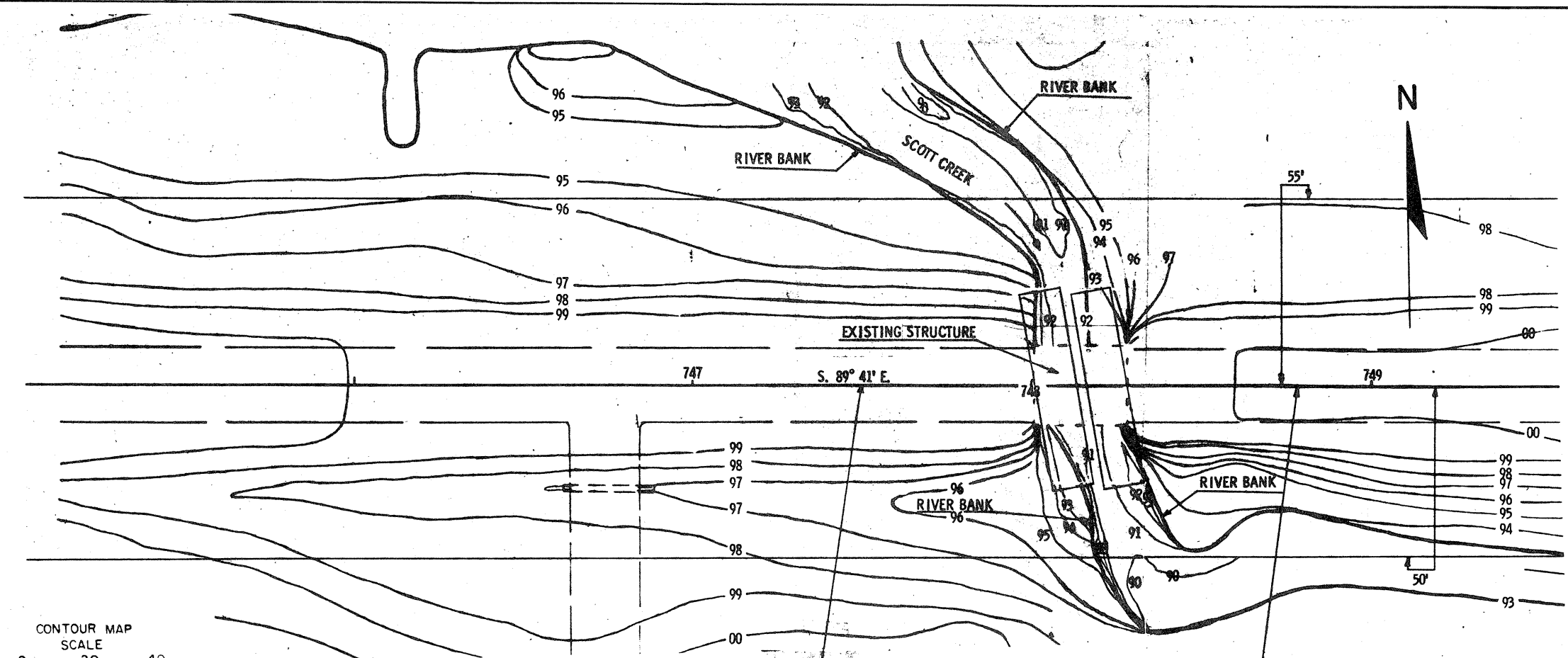
± STA. 693+04 ± STA. 693+16 ± STA. 693+28  
3-9' SPAN X 58' STRUCTURAL PLATE PIPE ARCHES REQ'D.  
END ELEVATION

BENCH MARKS			
NO.	STATION	DESCRIPTION	ELEV.
	690+40	14' HEMLOCK	70' RT. 100.56

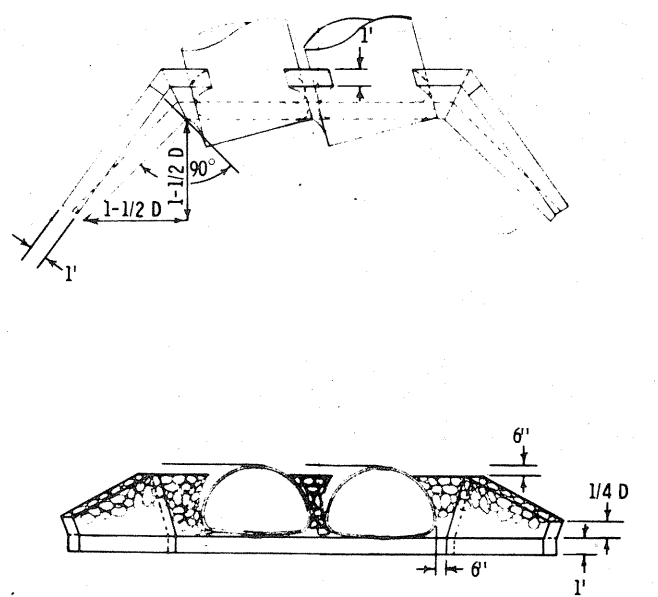


B.P.R. DIVISION	PROJECT	SHEET NUMBER	TOTAL SHEETS
	T 021-2(24)	5	8

1580-2-70

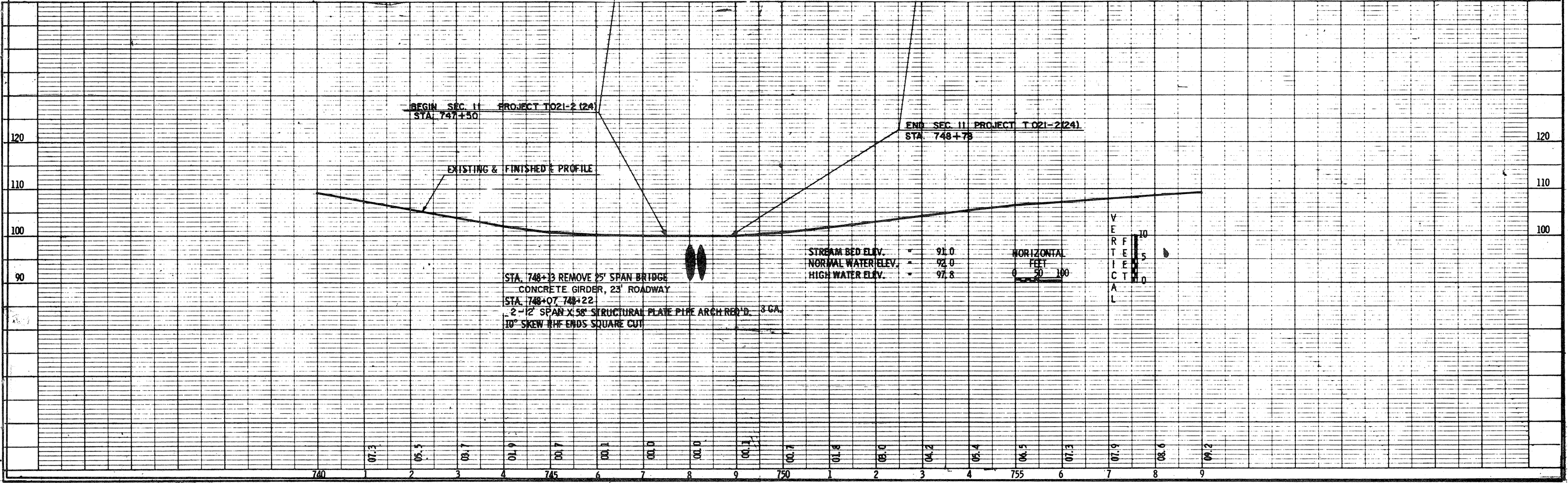


CONTOUR MAP  
SCALE  
0 20 40  
CONTOUR INTERVAL 2 FT.



± STA. 748+07 ± STA. 748+22  
2-12' SPAN X 58' STRUCTURAL PLATE PIPE ARCHES REQ'D.  
END ELEVATION  
DETAIL OF RIPRAP

BENCH MARKS				
NO.	STATION	DESCRIPTION	ELEV.	
	746+00	8' DOUBLE ELM	70' LT.	95.71



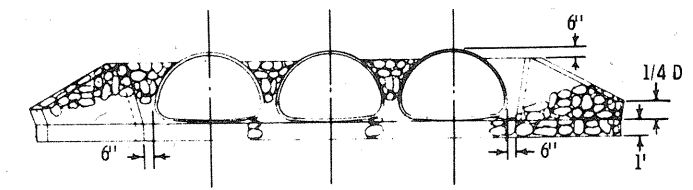
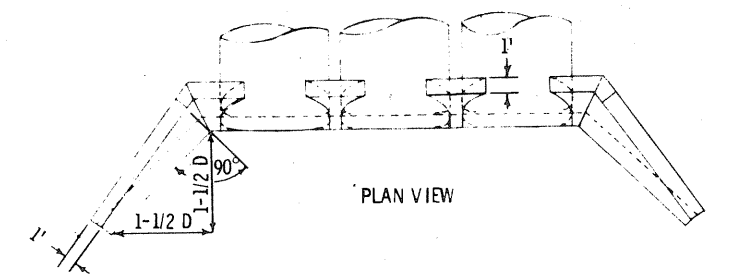
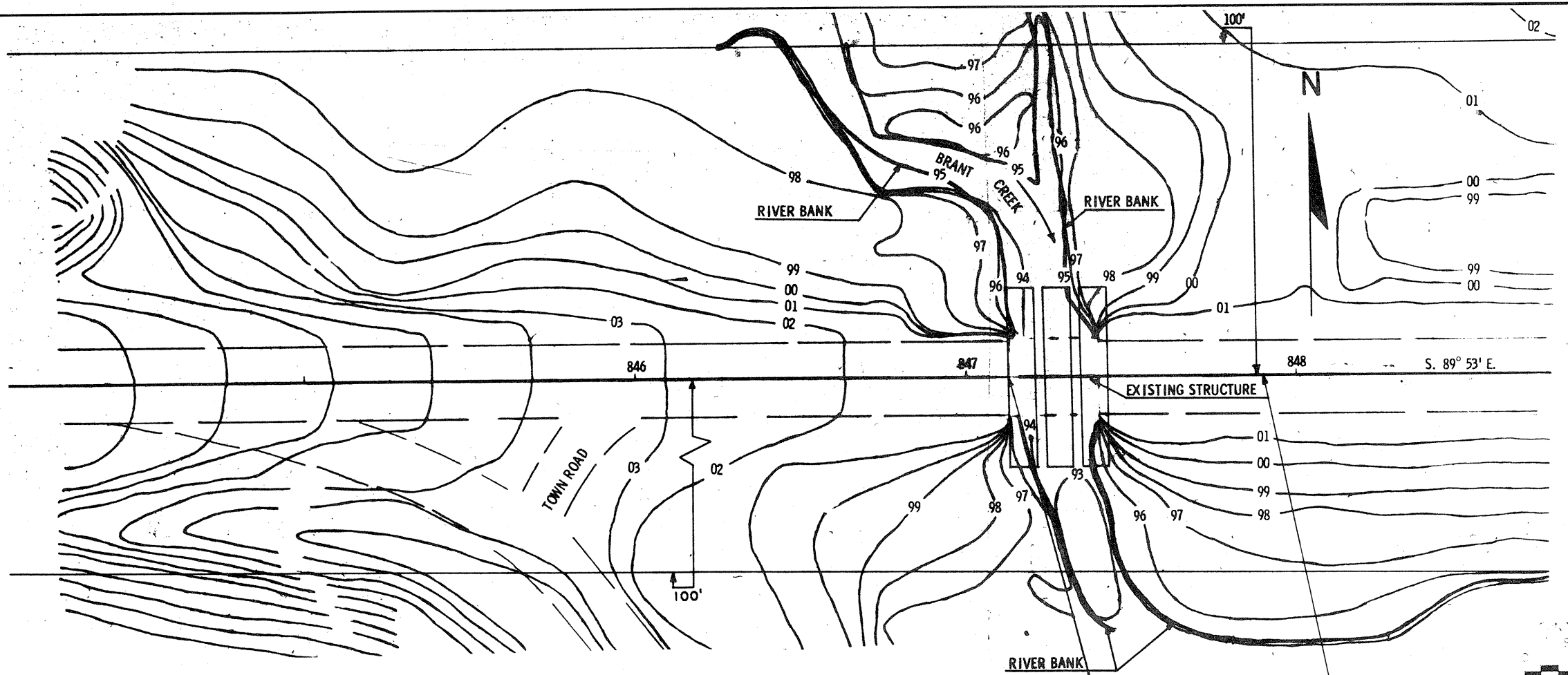
STA. 748+13 REMOVE 25' SPAN BRIDGE  
CONCRETE GIRDER, 23' ROADWAY  
STA. 748+07 748+22  
2-12' SPAN X 58' STRUCTURAL PLATE PIPE ARCH REQ'D. 3 GA.  
10° SKEW W/IF ENDS SQUARE CUT

STREAM BED ELEV. = 91.0  
NORMAL WATER ELEV. = 92.0  
HIGH WATER ELEV. = 97.8

VERTICAL  
SCALE  
10  
5  
0

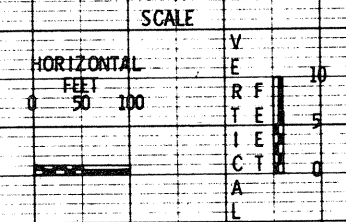
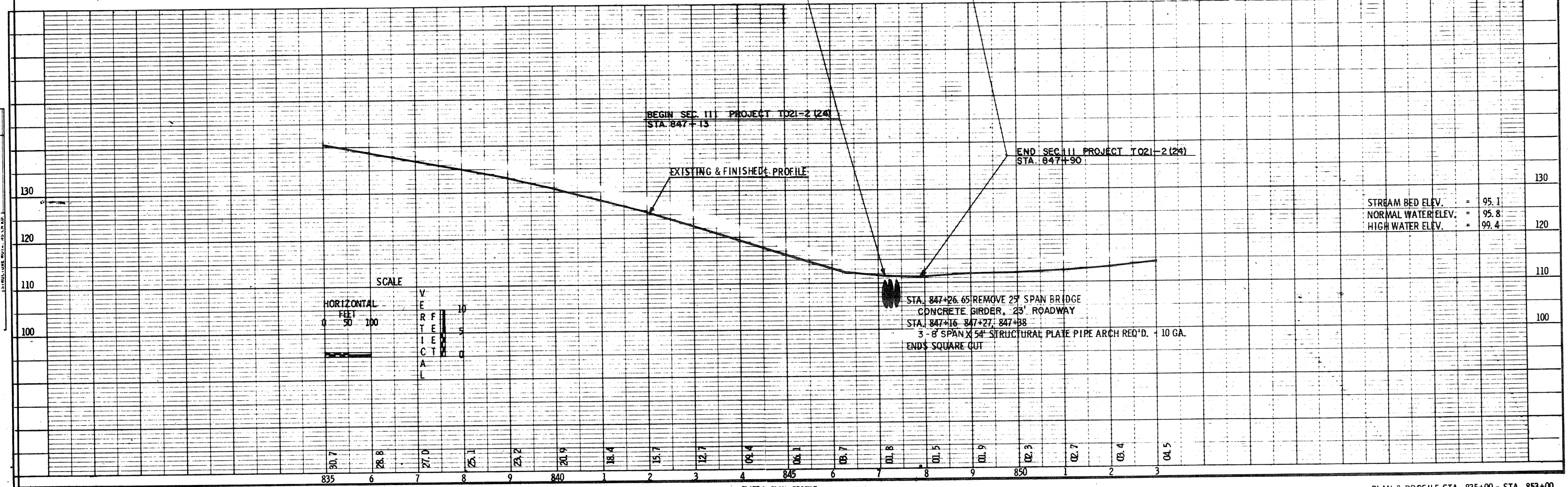
B. P. R. DIVISION	PROJECT	SHEET NUMBER	TOTAL SHEETS
	T 021-2(24)	6	8

1580-2-70



STA. 847+16 STA. 847+27 STA. 847+38  
3-8' SPAN X 54' STRUCTURAL PLATE PIPE ARCHES REQ'D.  
END ELEVATION  
DETAIL OF RIPRAP

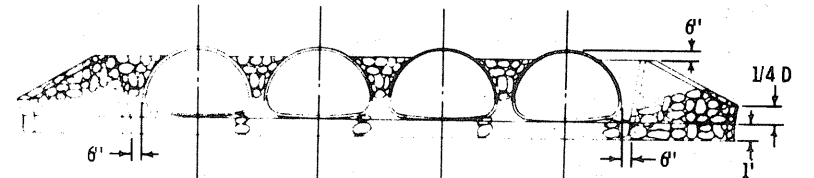
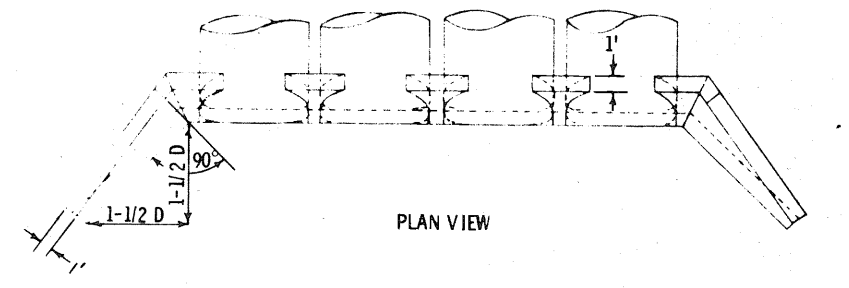
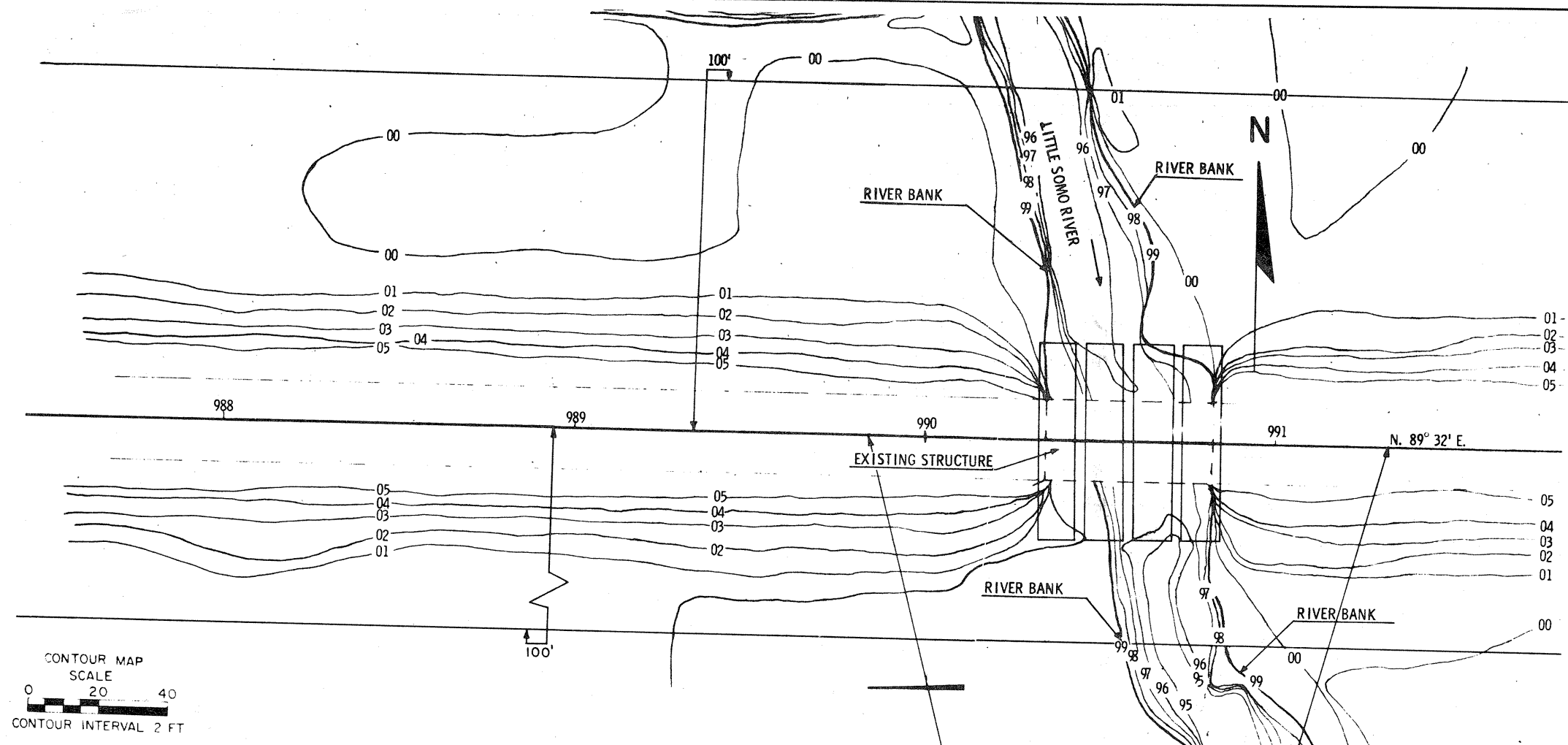
		BENCH MARKS		
NO.	STATION	DESCRIPTION		ELEV.
	846+60	12' ELM	55' LT.	100.03



STREAM BED ELEV.	=	95.1	
NORMAL WATER ELEV.	=	95.8	
HIGH WATER ELEV.	=	99.4	120

STA. 847+26.65 REMOVE 27' SPAN BRIDGE  
CONCRETE GIRDER, 23' ROADWAY  
STA. 847+16 847+27, 847+38  
3-8' SPAN X 54' STRUCTURAL PLATE PIPE ARCH REQ'D. - 10 GA.  
ENDS SQUARE CUT

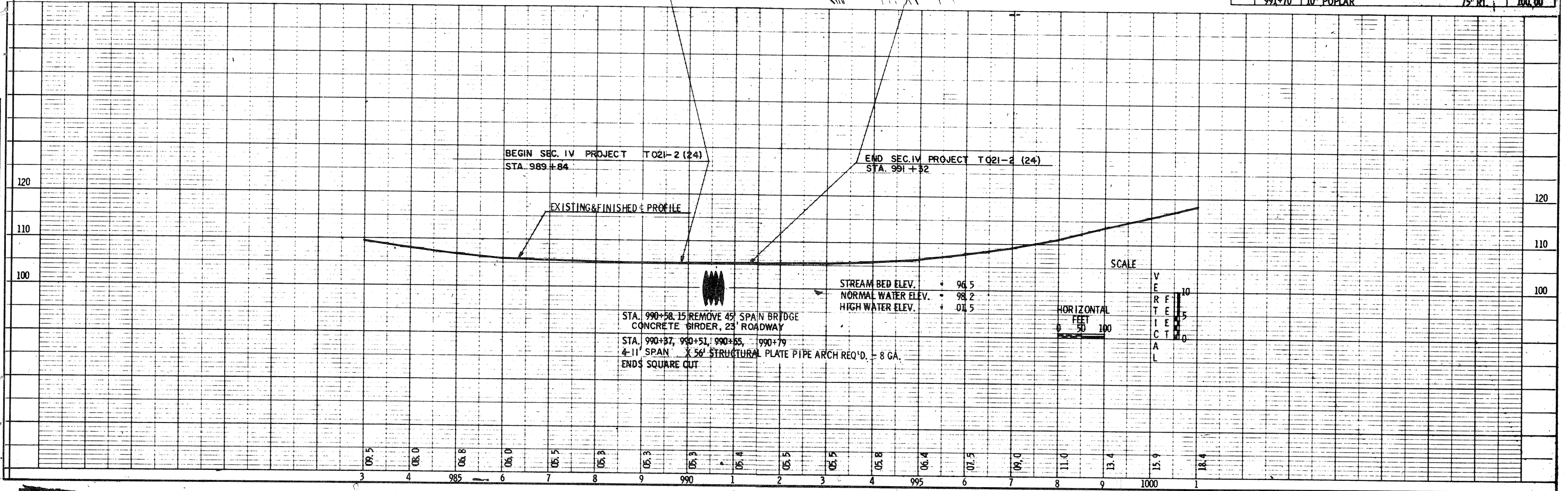
1580-2-70



STA. 990+37 STA. 990+51 STA. 990+65 STA. 990+79  
 4-11' SPAN X 56' STRUCTURAL PLATE PIPE ARCHES REQ'D.  
 END ELEVATION  
 DETAIL OF RIPRAP

CONTOUR MAP SCALE  
 0 20 40  
 CONTOUR INTERVAL 2 FT

BENCH MARKS			
NO.	STATION	DESCRIPTION	ELEV.
	991+70	10' POPLAR	75' RT. 100.00



BEGIN SEC. IV PROJECT T021-2 (24)  
 STA. 989+84

END SEC. IV PROJECT T021-2 (24)  
 STA. 991+32

EXISTING & FINISHED PROFILE

STA. 990+58.15 REMOVE 45' SPAN BRIDGE  
 CONCRETE GIRDER, 23' ROADWAY  
 STA. 990+37, 990+51, 990+65, 990+79  
 4-11' SPAN X 56' STRUCTURAL PLATE PIPE ARCH REQ'D. - 8 GA.  
 ENDS SQUARE CUT

STREAM BED ELEV. + 96.5  
 NORMAL WATER ELEV. + 98.2  
 HIGH WATER ELEV. + 01.5

SCALE  
 HORIZONTAL FEET 0 50 100  
 VERTICAL FEET 0 5 10