

Index of Sheets

Sheet No. 1	Title
Sheet No. 2-2.4	Typical Cross Sections
Sheet No. 3	Estimate of Quantities
Sheet No. 3A	Miscellaneous Quantities
Sheet No. —	Right of Way Plat
Sheet No. 4-18	Plan and Profile
Sheet No. 19-19.6	Standard Details
Sheet No. —	Drainage Structures
Sheet No. 20-41	Cross Sections

STATE OF WISCONSIN

DEPARTMENT OF TRANSPORTATION

DIVISION OF HIGHWAYS

PLAN AND PROFILE OF PROPOSED

WAUSAU — NORTH COUNTY LINE

SOUTH COUNTY LINE — MERRILL

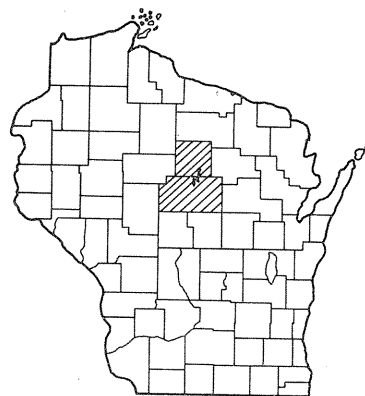
U.S.H. 51

U.S.H. 51

MARATHON COUNTY

LINCOLN COUNTY

Sheet Number	Total Sheets
1	41



PROJECT IDENTIFICATION NUMBER
1175-5-70

PROJECT IDENTIFICATION NUMBER
1173-1-70

C.T.H. "U" — C.T.H. "A"

C.T.H. "O"

MARATHON COUNTY

DESIGNATION
I.D. 9484-1-71

A. D.T. 1970	=	110 - 160
A. D.T. 1990	=	300-350
D.H.V.	=	45 - 55
D.	=	60 - 40
T. % ADT	=	88
V.	=	50 M.P.H.

PROJECT IDENTIFICATION NUMBER	FEDERAL PROJECT DESIGNATION
9484-1-71	S 1139(5)

Scales
Plan 1 in. = 100 ft.
Profile Hor. 1 in. = 100 ft. Vert. 1 in. = 10 ft.
Cross Sections Hor. 1 in. = 5 FT. Vert. 1 in. = 5 FT. 10 FT.



END OF PROJECT S 1139(5)/9484-1-71

STA. 235 + 93.95 =
STA. 235 + 93.50 END OF PROJ. S1139(4)
* N 442,600 (±200)
* E 2,060,050 (±200)
NE COR. SEC. 34, T 30N R 6E

EXCEPTION TO NET LENGTH OF C
STA. 121 + 84.05 - 123 + 71.45
STRUCTURE B-37-151

BEGINNING OF PROJECT S 1139(5)/9484-1-71

STA. 12 + 00 =
STA. 12 + 00 BEGIN PROJ. S1139(4)
* N 420,205 (±200)
* E 2,060,050 (±200)
800' S. OF SE COR. SEC. 15, T 29N R 6E

END PROJ. 1173-1-70

STA. 23 "L" + 64 =
STA. 23 + 64 OF U05-4(34)
* N 490,200 (±200) E 2,084,700 (±200)
±40' E. & 480' S. OF THE N. 1/4 COR. SEC. 13, T-31-N, R-16-E.
EQUATION: STA. 746 + 30.0 BK.
STA. 9 "L" + 69.0 AHD.
= STA. 9 "L" + 69, BEGIN U05-4(34) &
STA. 201 + 39, END T05-4 (27)

END PROJ. 1175-5-70

STA. 544 + 91 =
BEGIN PROJ. 1173-1-70
STA. 544 + 91 =
STA. 544 + 91 END PROJ. F05-3(21) &
BEG. PROJ. F05-4 (38)
162.4' W. OF THE NE. COR. SEC. 5, T-30-N, R-7-E.

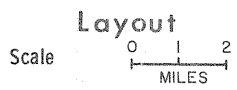
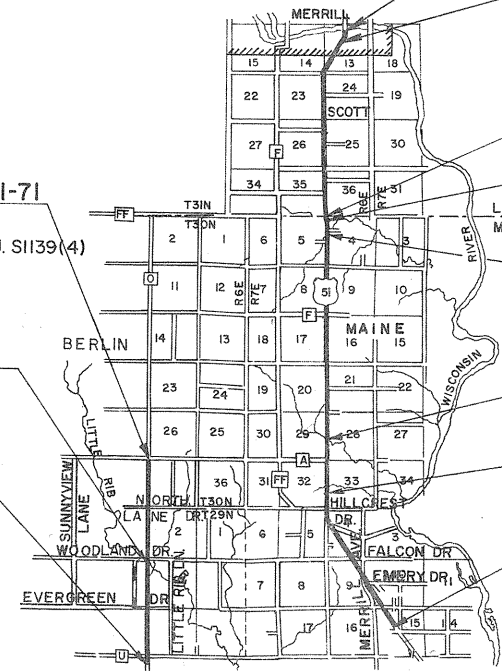
EXCEPTION TO NET LENGTH OF C
STA. 539 + 52.25 - 540 + 33.75
STRUCTURE B-37-22

EXCEPTION TO NET LENGTH OF C
STA. 526 + 94.50 - 527 + 75.50
STRUCTURE B-37-21

EXCEPTION TO NET LENGTH OF C
STA. 301 + 14.20 - 302 + 05.80
STRUCTURE B-37-20

STA. 232 + 00 = STA. 232 + 00, END
PROJ. F05-3(17)(19)

BEGIN PROJ. 1175-5-70
STA. 72 + 00 = STA. 72 + 00 OF
PROJ. F05-3(17)(19) AND
STA. 72 "MS" + 00 OF F05-3(42)(48)(50)
* N 424,200 (±200)
* E 2,287,550 (±200)
±370' N. AND ±450' W. OF THE CENTER
OF SEC. 15, T-29-N, R-7-E.



NET LENGTH OF CENTERLINE (PROJ. 1175-5-70) = 8.908 MI.
NET LENGTH OF CENTERLINE (PROJ. 1173-1-70 RURAL) = 3.587 MI.
NET LENGTH OF CENTERLINE (PROJ. 1173-1-70 URBAN) = 0.488 MI.
U.S.H. 51 TOTAL NET LENGTH OF CENTERLINE = 12.983 MI.
C.T.H. "O" NET LENGTH OF CENTERLINE (PROJ. 9484-1-71) = 4.206 MI.

* SCALED FROM U.S.G.S. TOPOGRAPHIC MAPS, MERRILL, MARATHON, AND HAMBURG WISCONSIN QUADRANGLE FOR IDENTIFICATION ONLY AND ARE REFERENCED TO THE WISCONSIN COORDINATE SYSTEM CENTRAL ZONE.

Conventional Signs

State Line	-----	Culverts in Place	-----
County Line	-----	Culverts Required	-----
Township or Range Line	-----	Drop Inlet	-----
Section Line	-----	Power Pole	-----
New Right of Way Line	-----	Telephone or Telegraph Pole	-----
Present Right of Way Line	-----	Right of Way Markers	-----
Wire Fence { Woven	-----	Reference Stake for Hubs Only	-----
{ Barbed	-----	Marsh	-----
of Line	-----	Hedge	-----
Corporate or City Limits	-----	Trees	-----
Property Line	-----	Ground Elevation	Datum Line 73.0
Traveled Way or P.E.	-----	Grade Elevation	Datum Line 76.16
Railroads	-----	BEAM GUARD IN PLACE	-----
Base or Survey Line	-----		
BEAM GUARD IN PLACE	-----		

STATE OF WISCONSIN
DEPARTMENT OF TRANSPORTATION
DIVISION OF HIGHWAYS

Surveyor E.C.B. & M.T.M. DISTRICT CHECKER E.A.W. & N.L.D.
DESIGNER E.C.B. & H.A.K. C.O. CHECKER I.L. J.

Correct:

Date 9/15/70 *K. A. ...*
Recommended for Approval: District Engineer

Date 9/22/70 *E. J. ...*
Approved: Chief Design Engineer

Date 9/28/70 *H. J. ...*
Approved: State Highway Engineer

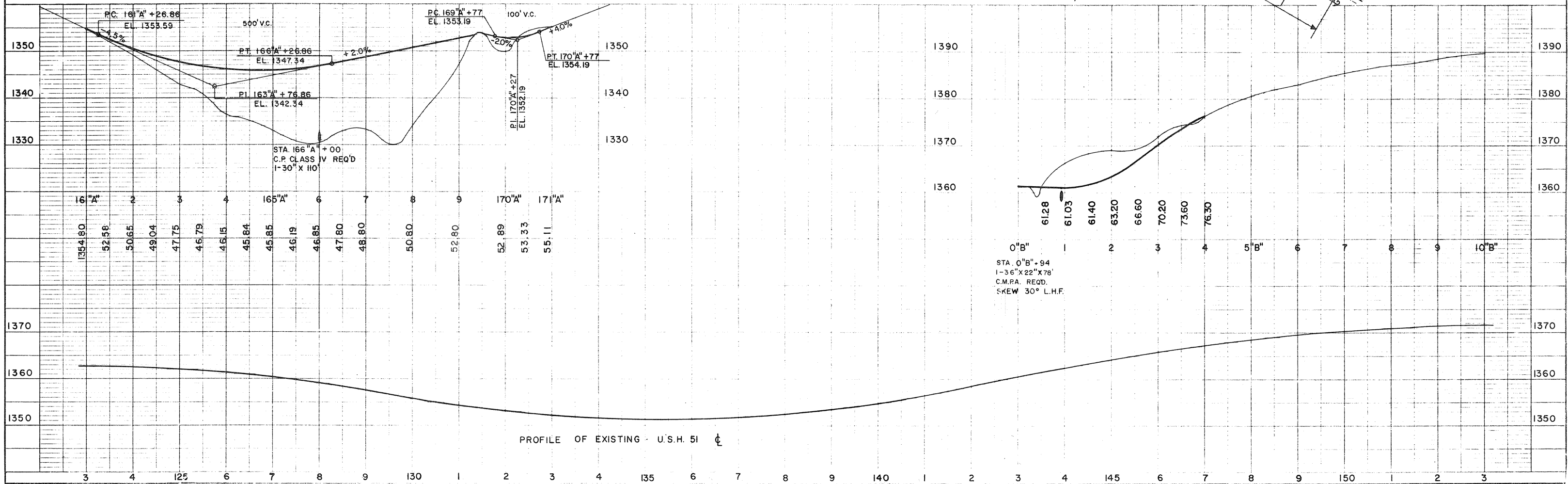
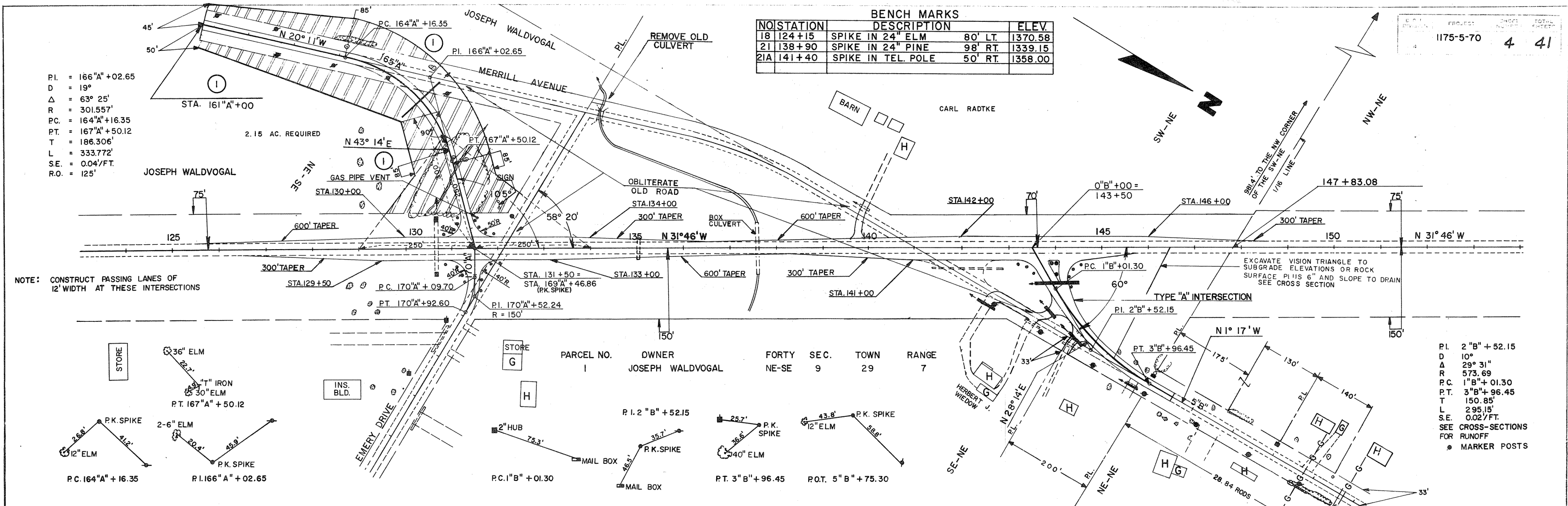
U.S. DEPARTMENT OF TRANSPORTATION
FEDERAL HIGHWAY ADMINISTRATION
BUREAU OF PUBLIC ROADS

REGION 4 WISCONSIN DIVISION

Approved:

NO	STATION	DESCRIPTION	ELEV.
18	124+15	SPIKE IN 24" ELM 80' LT	1370.58
21	138+90	SPIKE IN 24" PINE 98' RT	1339.15
21A	141+40	SPIKE IN TEL. POLE 50' RT	1358.00

P.I. = 166"A" + 02.65
 D = 19'
 Δ = 63° 25'
 R = 301.557'
 P.C. = 164"A" + 16.35
 P.T. = 167"A" + 50.12
 T = 186.306'
 L = 333.772'
 S.E. = 0.04'/FT.
 R.O. = 125'

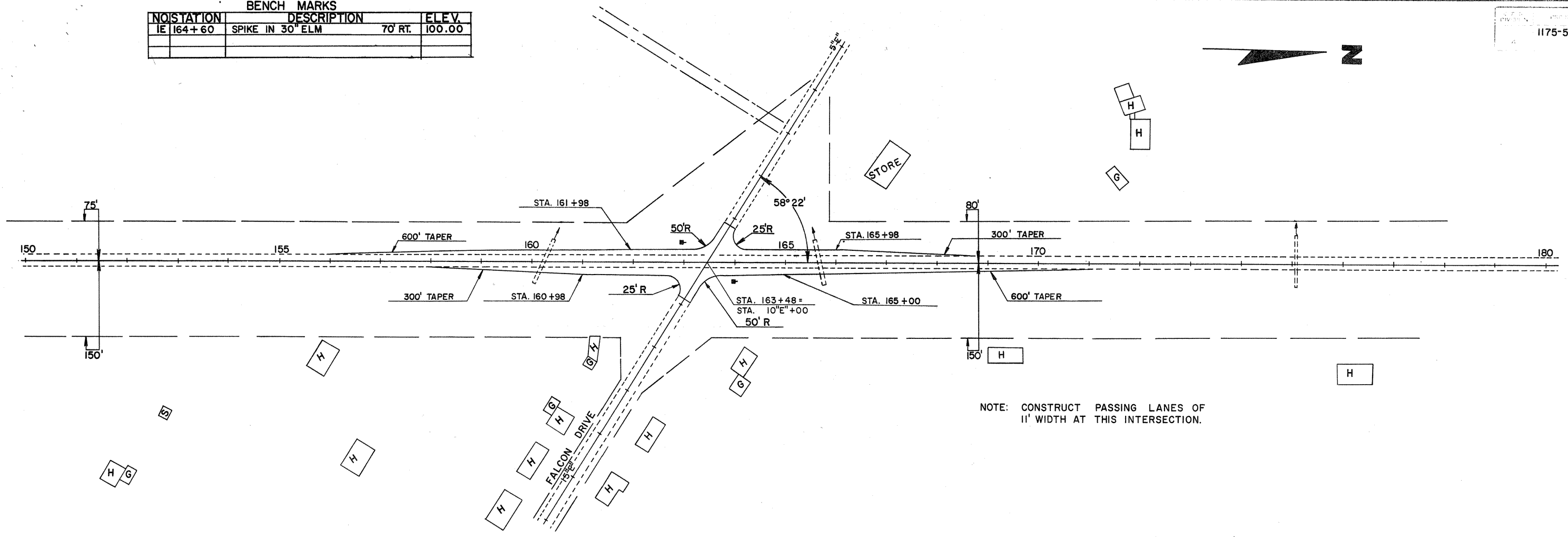


NOTE BOOK ALIGNMENT CHECKED
 RT. OF WAY CHECKED
 NO.

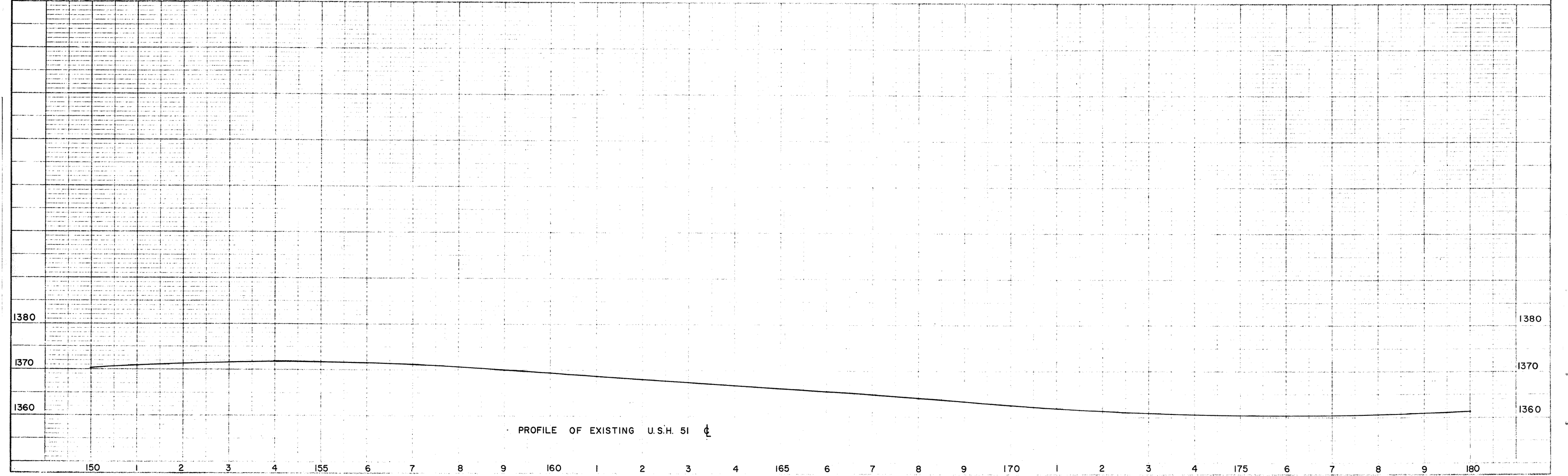
NOTE BOOK GRADES CHECKED
 STRUCTURE NOTATIONS CHKD
 NO.

BENCH MARKS			
NO.	STATION	DESCRIPTION	ELEV.
1E	164+60	SPIKE IN 30" ELM	70' RT. 100.00

1175-5-70 5 41



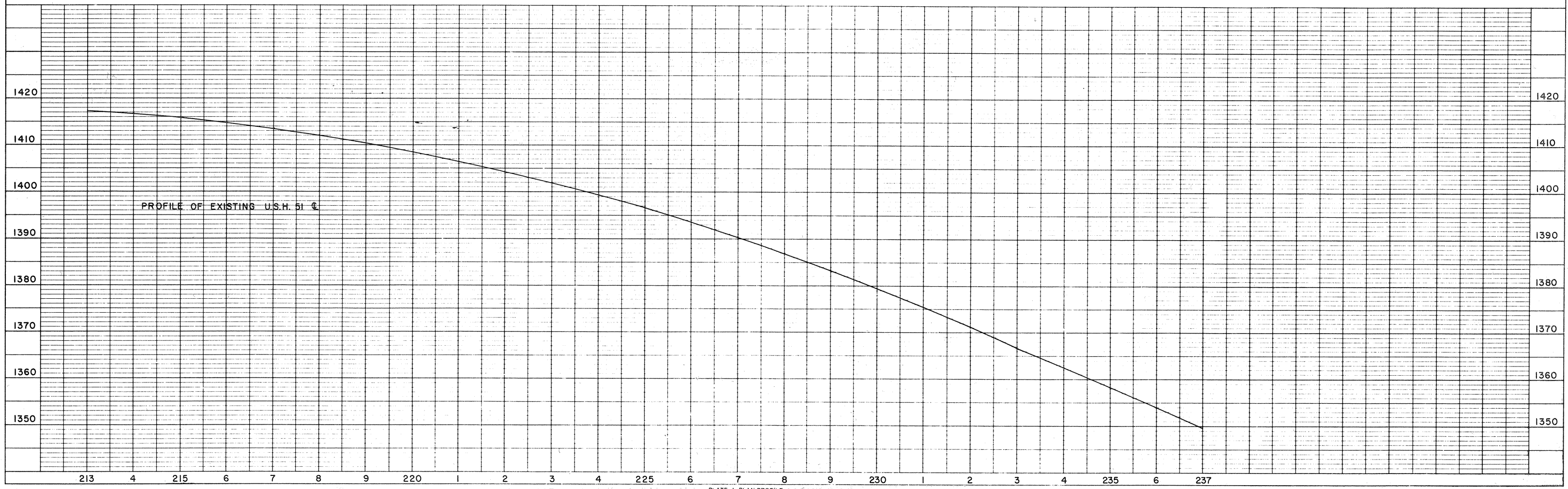
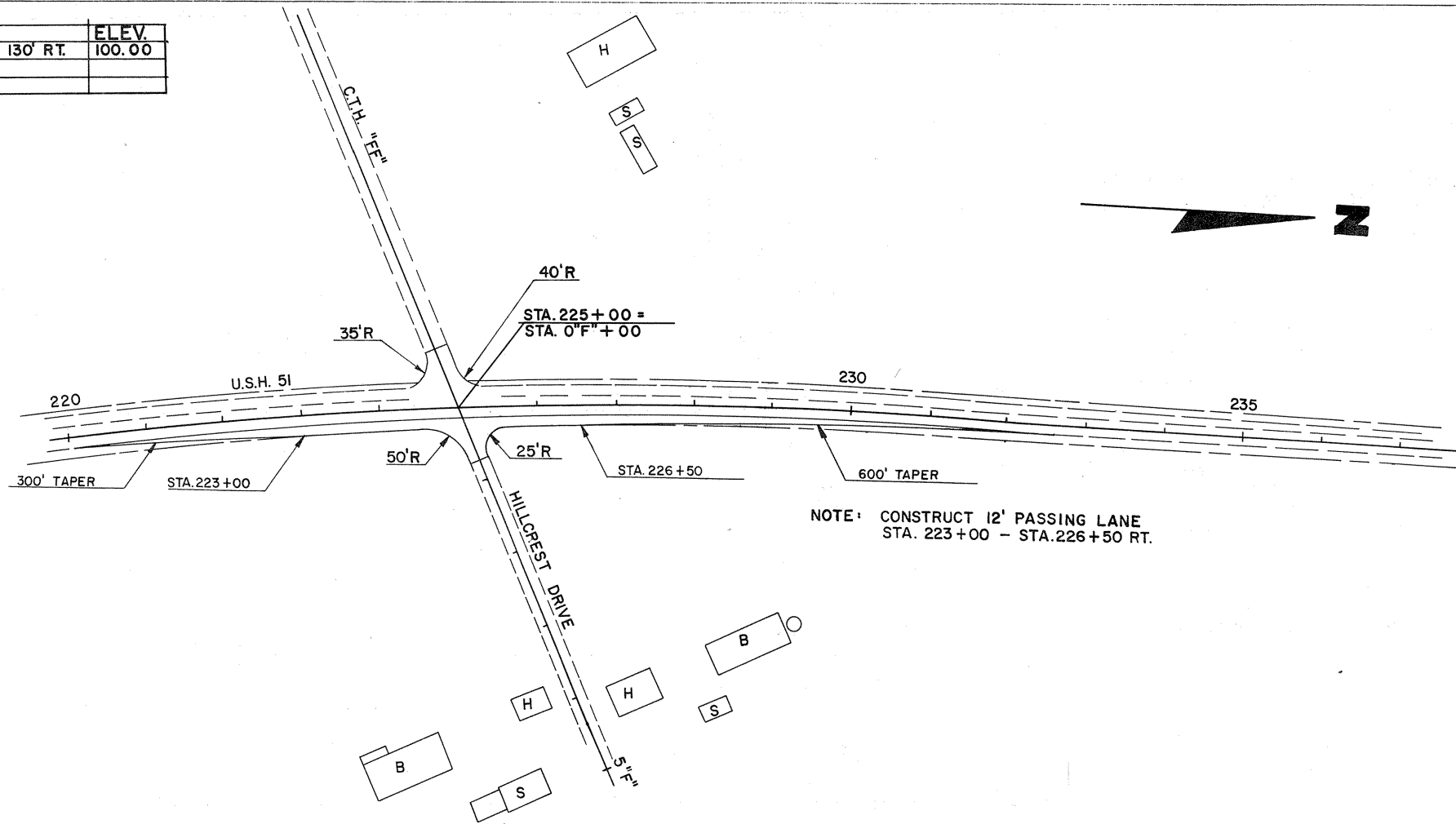
NOTE: CONSTRUCT PASSING LANES OF 11' WIDTH AT THIS INTERSECTION.



PROFILE OF EXISTING U.S.H. 51

NO. STATION		BENCH MARKS		ELEV.
IF		DESCRIPTION		
	225+30	SPIKE IN TEL. POLE	130' RT.	100.00

PROJECT ID	SHEET NUMBER	TOTAL SHEETS
1175-5-70	6	41
FEDERAL PROJECT DESIGNATION		

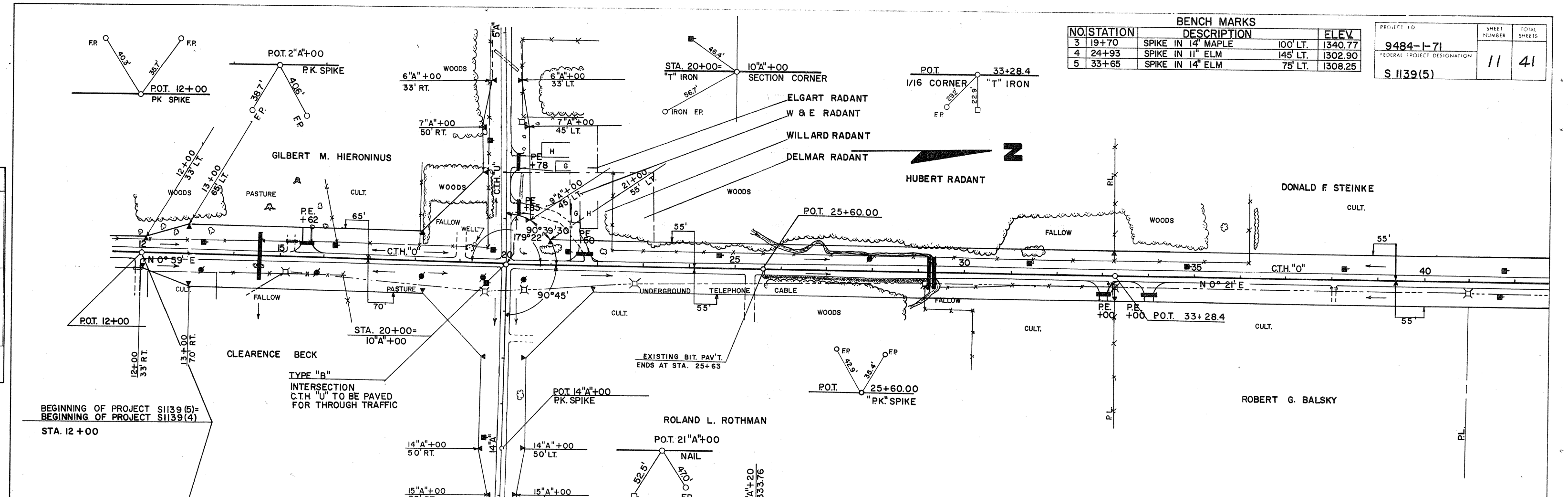


NOTE BOOK NO. 1175-5-70
 CHECKED BY: [blank]
 DATE: [blank]

NOTE BOOK NO. 1175-5-70
 CHECKED BY: [blank]
 DATE: [blank]

NO.	STATION	DESCRIPTION	ELEV.
3	19+70	SPIKE IN 14" MAPLE	1340.77
4	24+93	SPIKE IN 11" ELM	1302.90
5	33+65	SPIKE IN 14" ELM	1308.25

PROJECT ID	SHEET NUMBER	TOTAL SHEETS
9484-1-71	11	41
FEDERAL PROJECT DESIGNATION	S 1139(5)	

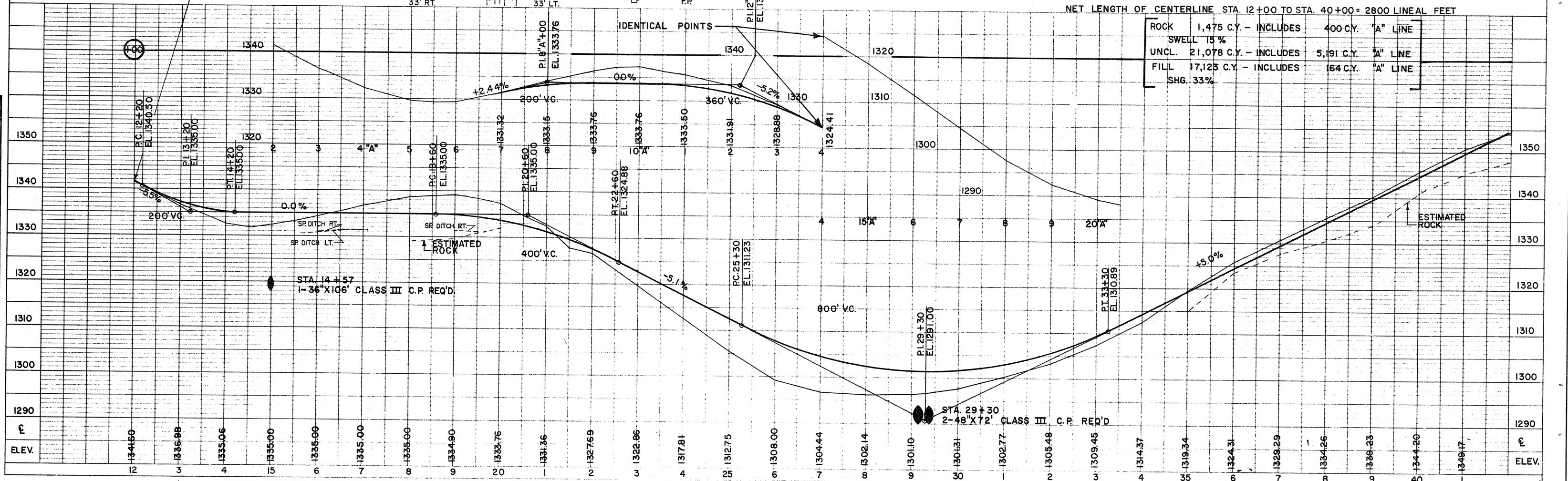


BEGINNING OF PROJECT S1139(5) -
 BEGINNING OF PROJECT S1139(4)
 STA. 12+00

TYPE "B"
 INTERSECTION
 C.T.H. "U" TO BE PAVED
 FOR THROUGH TRAFFIC

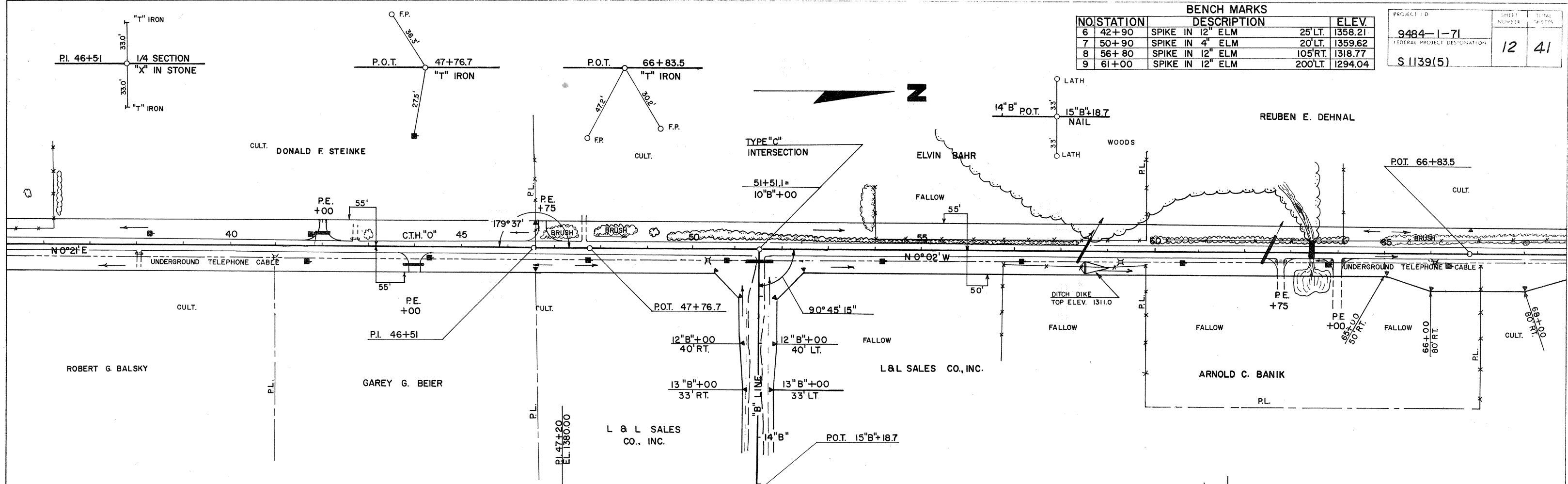
NET LENGTH OF CENTERLINE STA. 12+00 TO STA. 40+00 = 2800 LINEAL FEET

ROCK	1,475 C.Y. - INCLUDES	400 C.Y. "A" LINE
SWELL	15%	
UNCL.	21,078 C.Y. - INCLUDES	5,191 C.Y. "A" LINE
FILL	17,123 C.Y. - INCLUDES	164 C.Y. "A" LINE
SHG.	33%	

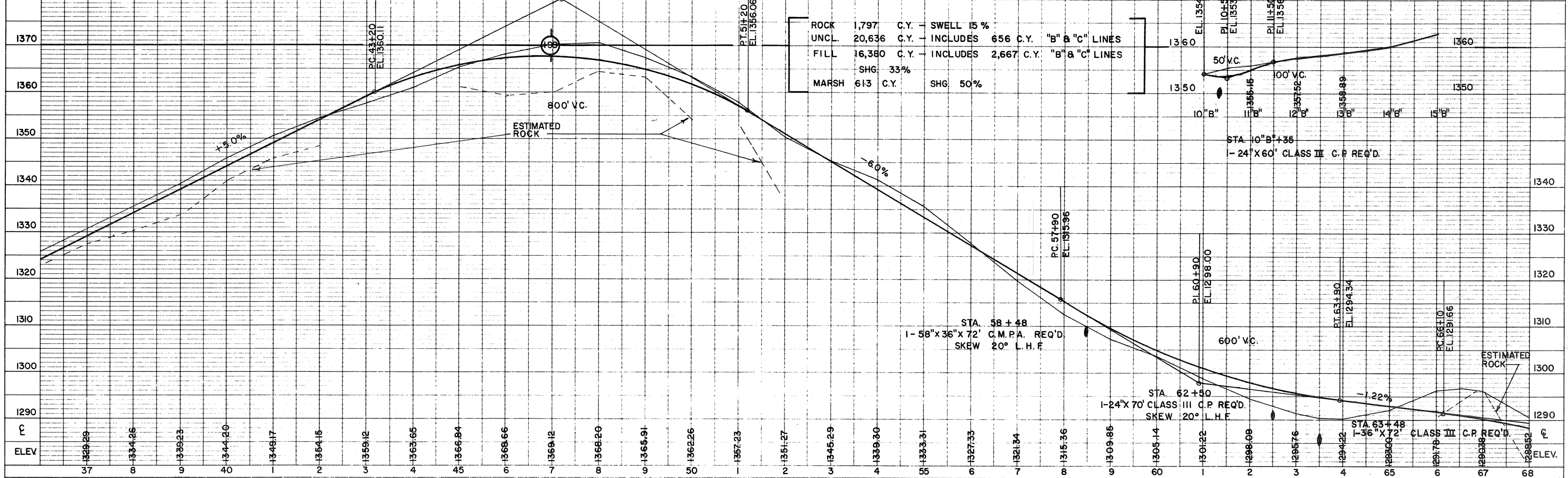


NO	STATION	DESCRIPTION	ELEV.
6	42+90	SPIKE IN 12" ELM	25'LT. 1358.21
7	50+90	SPIKE IN 4" ELM	20'LT. 1359.62
8	56+80	SPIKE IN 12" ELM	105'RT. 1318.77
9	61+00	SPIKE IN 12" ELM	200'LT. 1294.04

PROJECT ID	SHEET NUMBER	TOTAL SHEETS
9484-1-71	12	41
FEDERAL PROJECT DESIGNATION		
S 1139(5)		



NET LENGTH OF CENTERLINE STA. 40+00 TO STA. 68+00 = 2800 LINEAL FEET

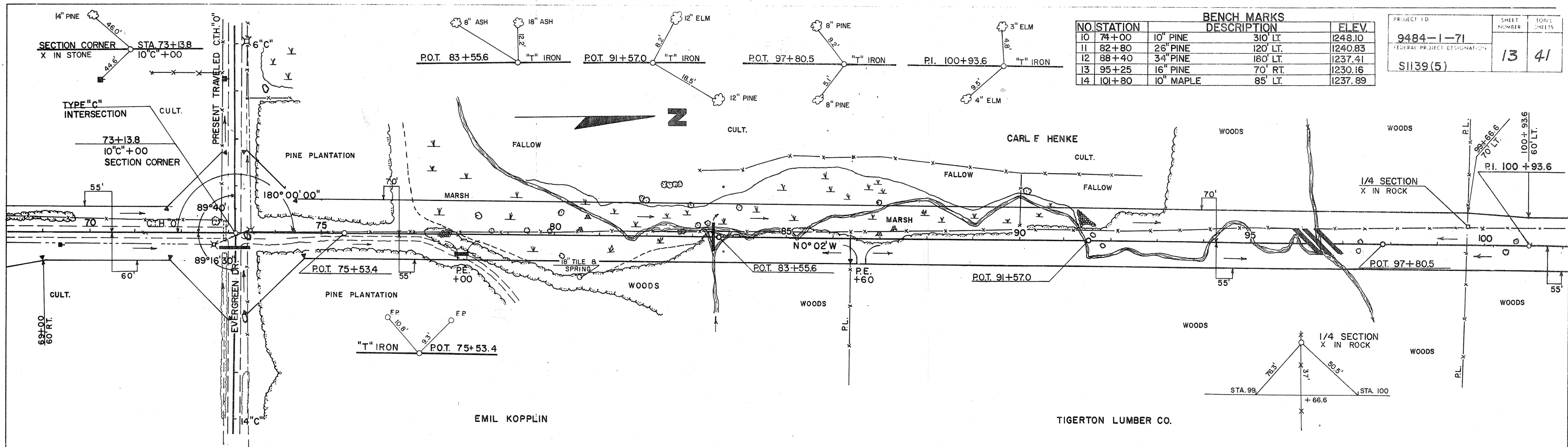


NOTE: ALIGNED CHECKED
 NO. L.L.L. STAKE NOTATIONS CHECKED

NOTE: GRADES CHECKED
 S.M.V. NOTE
 NO. L.L.L. STAKE NOTATIONS CHECKED

No. 111-111-111-111-111-111

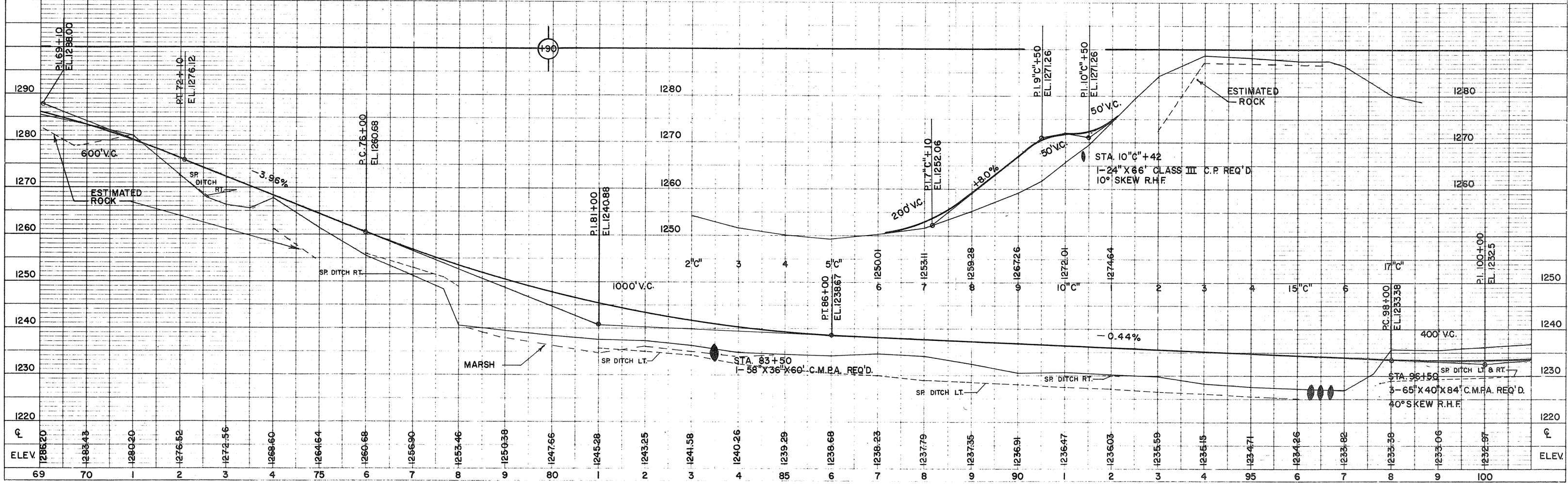
No. 111-111-111-111-111-111



NO.	STATION	BENCH MARK DESCRIPTION	ELEV.
10	74+00	10" PINE	1248.10
11	82+80	26" PINE	1240.83
12	88+40	34" PINE	1237.41
13	95+25	16" PINE	1230.16
14	101+80	10" MAPLE	1237.89

PROJECT ID	SHEET NUMBER	TOTAL SHEETS
9484-1-71	13	41
FEDERAL PROJECT DESIGNATION		
S1139(5)		

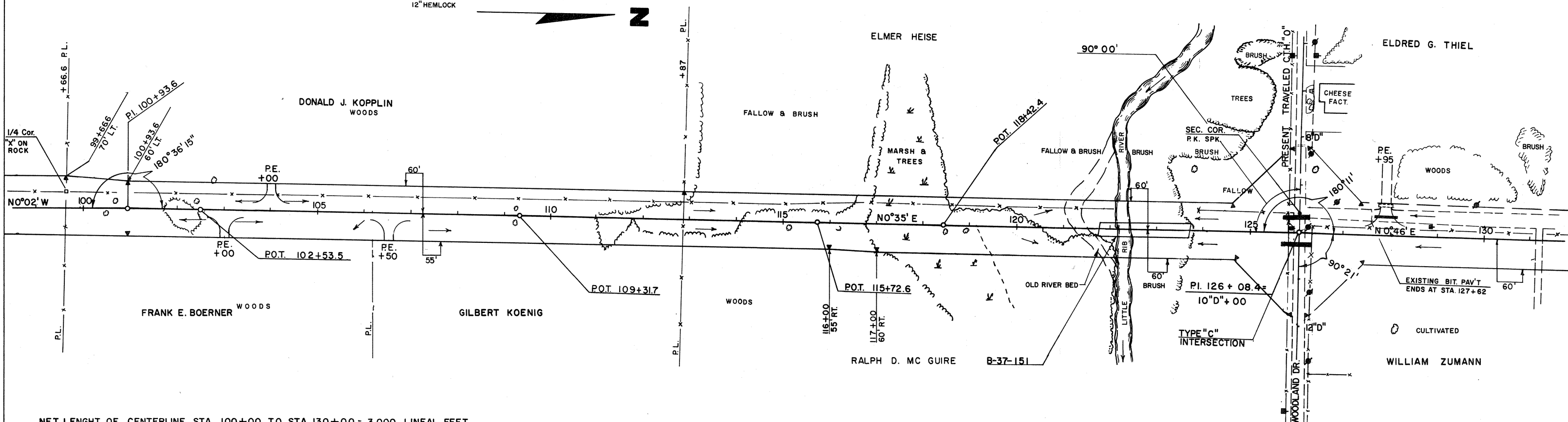
NET LENGTH OF CENTERLINE STA. 68+00 TO STA. 100+00 = 3200 LINEAL FEET



STATION	ELEV.
69	1286.20
70	1283.43
1	1280.20
2	1276.52
3	1272.56
4	1268.60
75	1264.64
6	1260.68
7	1256.90
8	1253.46
9	1250.38
80	1247.66
1	1245.28
2	1243.25
3	1241.58
4	1240.26
85	1239.29
6	1238.68
7	1238.23
8	1237.79
9	1237.35
90	1236.91
1	1236.47
2	1236.03
3	1235.59
4	1235.15
95	1234.71
6	1234.26
7	1233.82
8	1233.38
9	1233.06
100	1232.97

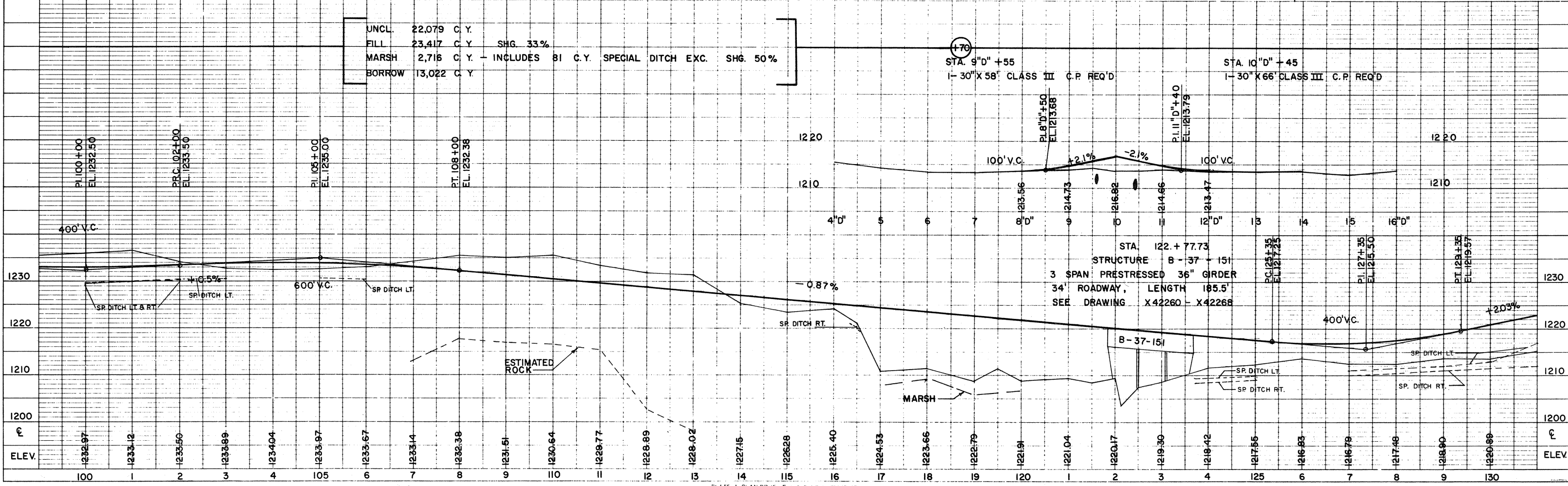
BENCH MARKS			
NO.	STATION	DESCRIPTION	ELEV.
14	101+80	SPK. IN 10" MAPLE	85' LT. 1237.89
15	108+52	SPK. IN 10" PINE	90' RT. 1235.27
16	113+40	SPK. IN 8" ELM	105' LT. 1230.26
17	120+60	SPK. IN 14" MAPLE	70' RT. 1213.41
18	123+80	SPK. IN 14" ELM	130' LT. 1210.34

PROJECT ID	9484-1-71
FEDERAL PROJECT DESIGNATION	S 1139 (5)
SHEET NUMBER	14
TOTAL SHEETS	41



NET LENGTH OF CENTERLINE STA. 100+00 TO STA. 130+00 = 3,000 LINEAL FEET

UNCL.	22,079	C. Y.
FILL	23,417	C. Y. SHG. 33%
MARSH	2,716	C. Y. - INCLUDES BI C. Y. SPECIAL DITCH EXC. SHG. 50%
BORROW	13,022	C. Y.

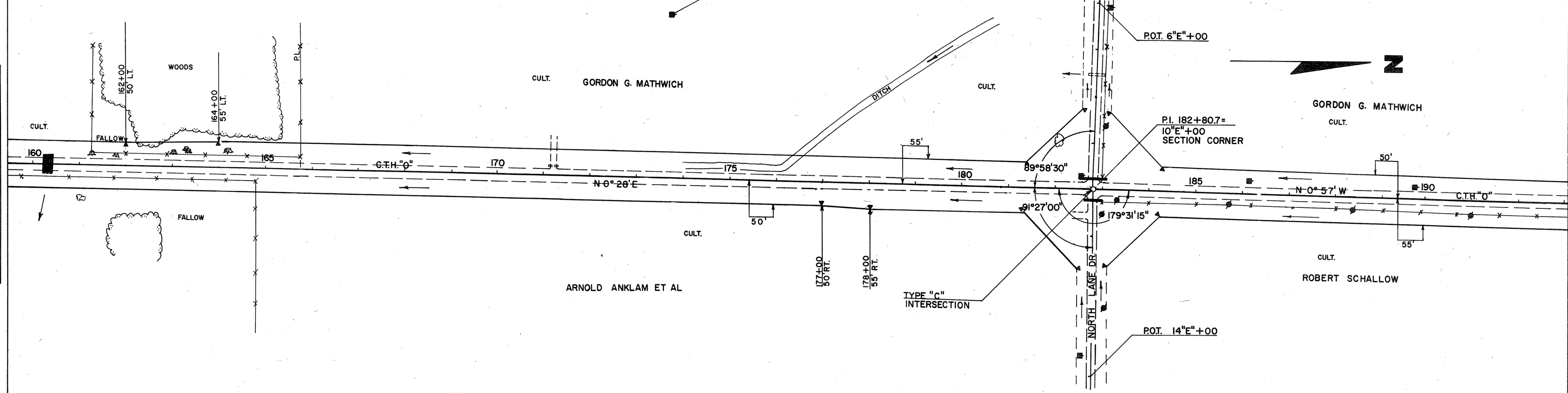
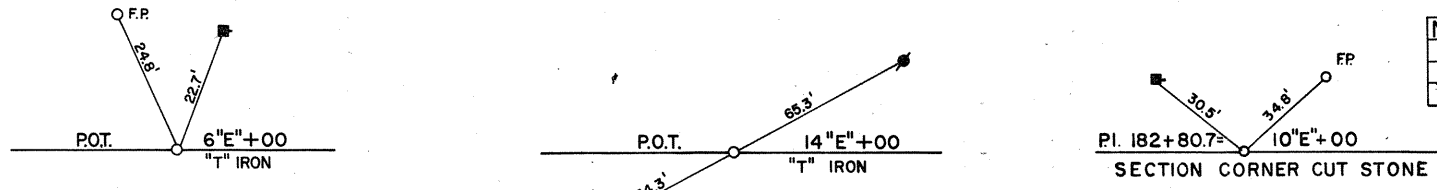


NOTE BOOK ALIGNMENT CHECKED BY L.L. No. 11123

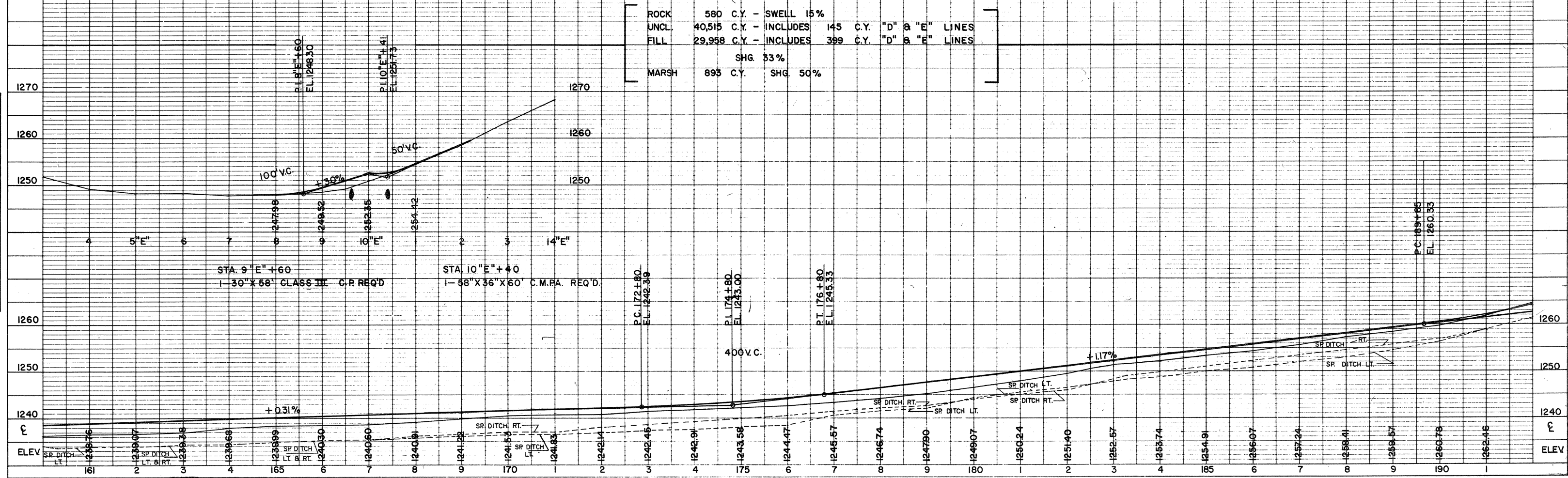
NOTE BOOK GRADE CHECKED BY M.V. NO. 11123

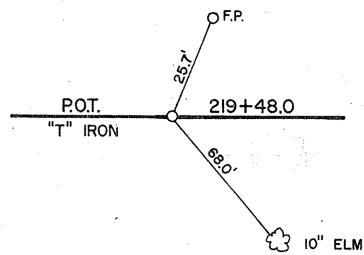
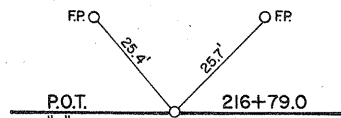
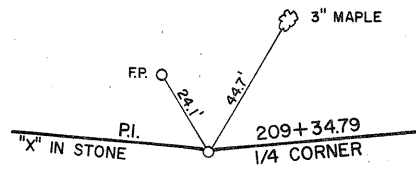
NO.	STATION	DESCRIPTION	ELEV.
23	164+70	SPIKE IN 30" ELM	100'LT. 123642
24	181+90	SPIKE IN 28" PINE	105'LT. 1247.65
25	194+50	SPIKE IN 10" MAPLE	75'RT. 1277.09

PROJECT ID	SHEET NUMBER	TOTAL SHEETS
9484-1-71	16	41
FEDERAL PROJECT DESIGNATION		
S1139(5)		



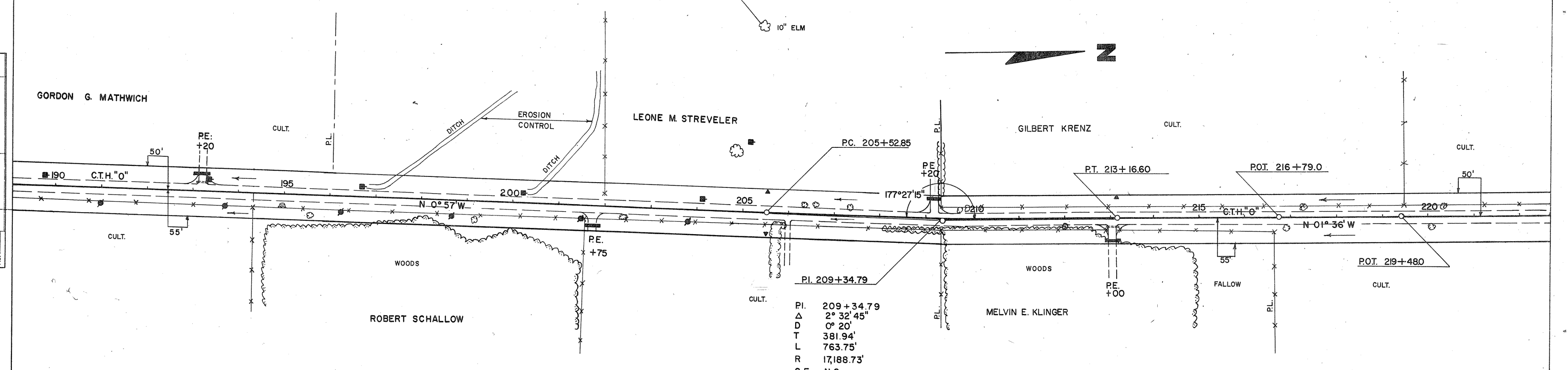
NET LENGTH OF CENTERLINE STA. 160+00 TO STA. 190+00 = 3000 LINEAL FEET



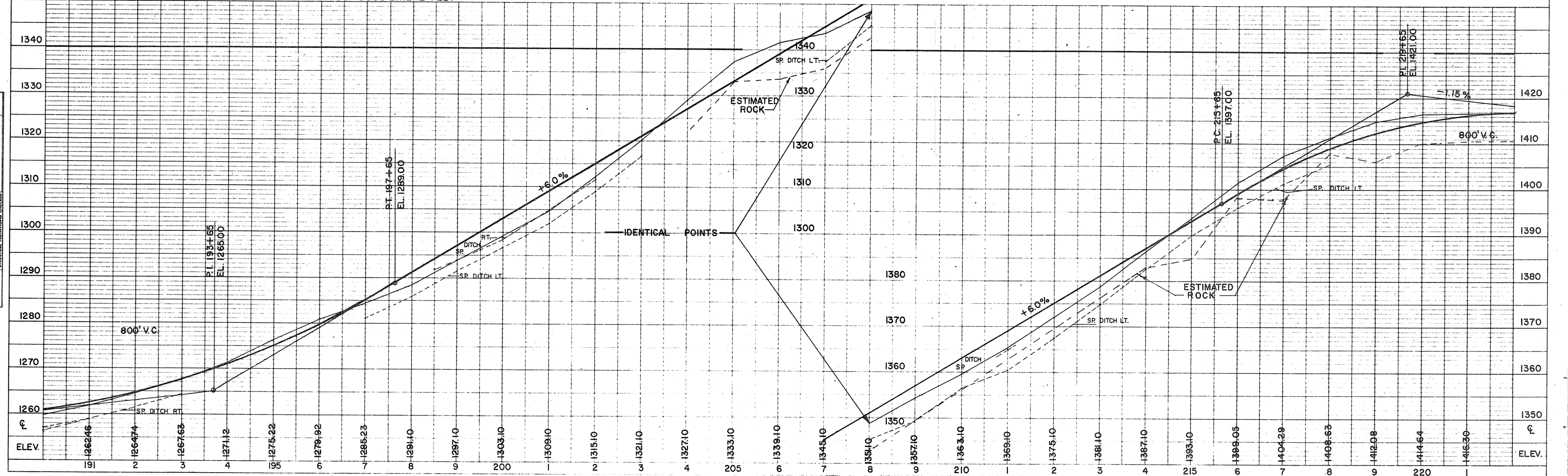


NO	STATION	DESCRIPTION	ELEV
25	194+00	SPIKE IN 10" MAPLE	75' RT. 1277.09
26	200+40	SPIKE IN 30" ASH	75' RT. 1304.79
27	209+34	SPIKE IN 10" ELM	130' LT. 1348.21
28	214+90	SPIKE IN 30" ELM	110' RT. 1398.24
29	219+50	SPIKE IN 10" ELM	130' LT. 1410.63

PROJECT ID	SHEET NUMBER	TOTAL SHEETS
9484-1-71	17	41
FEDERAL PROJECT DESIGNATION		
S 1139(5)		



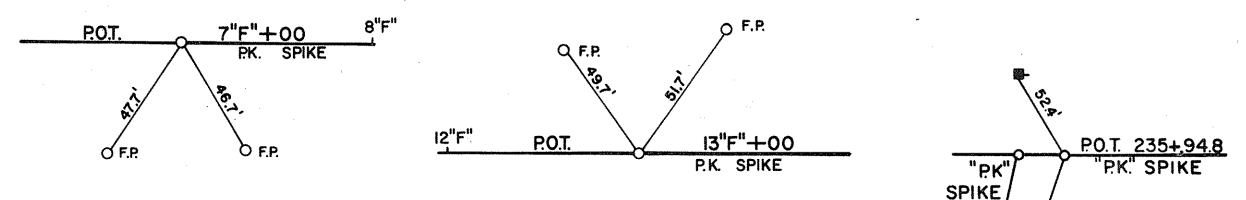
NET LENGTH OF CENTERLINE STA. 190+00 TO STA. 220+00 = 3000 LINEAL FEET



STRUCTURE NOTATIONS CHECKED

NO	STATION	BENCH MARKS DESCRIPTION	ELEV.
30	235+53	SPIKE IN POWER POLE	30' LT. 1400.31

PROJECT I.D.	SHEET NUMBER	TOTAL SHEETS
9484-1-71	18	41
FEDERAL PROJECT DESIGNATION		
S1139(5)		



GILBERT KRENZ
CULT.

LA VERN KLINGER

TYPE "B"
INTERSECTION

NET LENGTH OF CENTERLINE STA. 220 + 00 TO STA. 235 + 94 = 1594 LINEAL FEET.

UNCL	2,176	C.Y.	- INCLUDES 115 C.Y. "F" LINE
FILL	1,636	C.Y.	- INCLUDES 110 C.Y. "F" LINE
SNG. 33 %			

