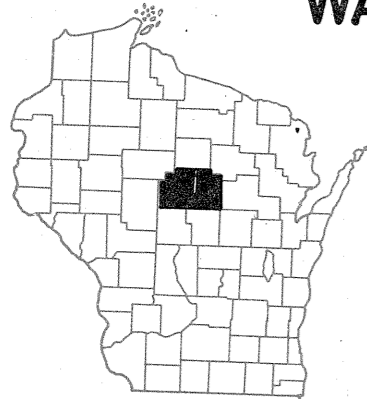


**Index of Sheets**

Sheet No.	1	Title
Sheet No.	2-2.11	Typical Cross Sections
Sheet No.	3	Estimate of Quantities
Sheet No.	3	Miscellaneous Quantities
Sheet No.	-	Right of Way Plat
Sheet No.	5-5.14	Plan and Profile - STA. 581+01.93 - STA. 771+02.75 & STA. 82+58.10 - STA. 149+41.92
Sheet No.	6-6.9	Standard Details
Sheet No.	-	Structure Plans
Sheet No.	-	Cross Sections

TOTAL SHEETS = 39



# WAUSAU-NORTH COUNTY LINE ROAD

MAINE DR.-NORTH COUNTY LINE

U.S.H. 51

MARATHON COUNTY

STATE PROJECT NUMBER

1175-1-78

STATE OF WISCONSIN

# DEPARTMENT OF TRANSPORTATION

# DIVISION OF HIGHWAYS

PLAN AND PROFILE OF PROPOSED

# SOUTH COUNTY LINE-MERRILL ROAD

SOUTH COUNTY LINE-WISCONSIN RIVER

U.S.H. 51

LINCOLN COUNTY

STATE PROJECT NUMBER

1173-2-78

STATE PROJECT	FEDERAL PROJECT	
	PROJECT	CONTRACT
1175-1-78	RF 05-3 (80)	I
1173-2-78	RF 05-4 (57)	I

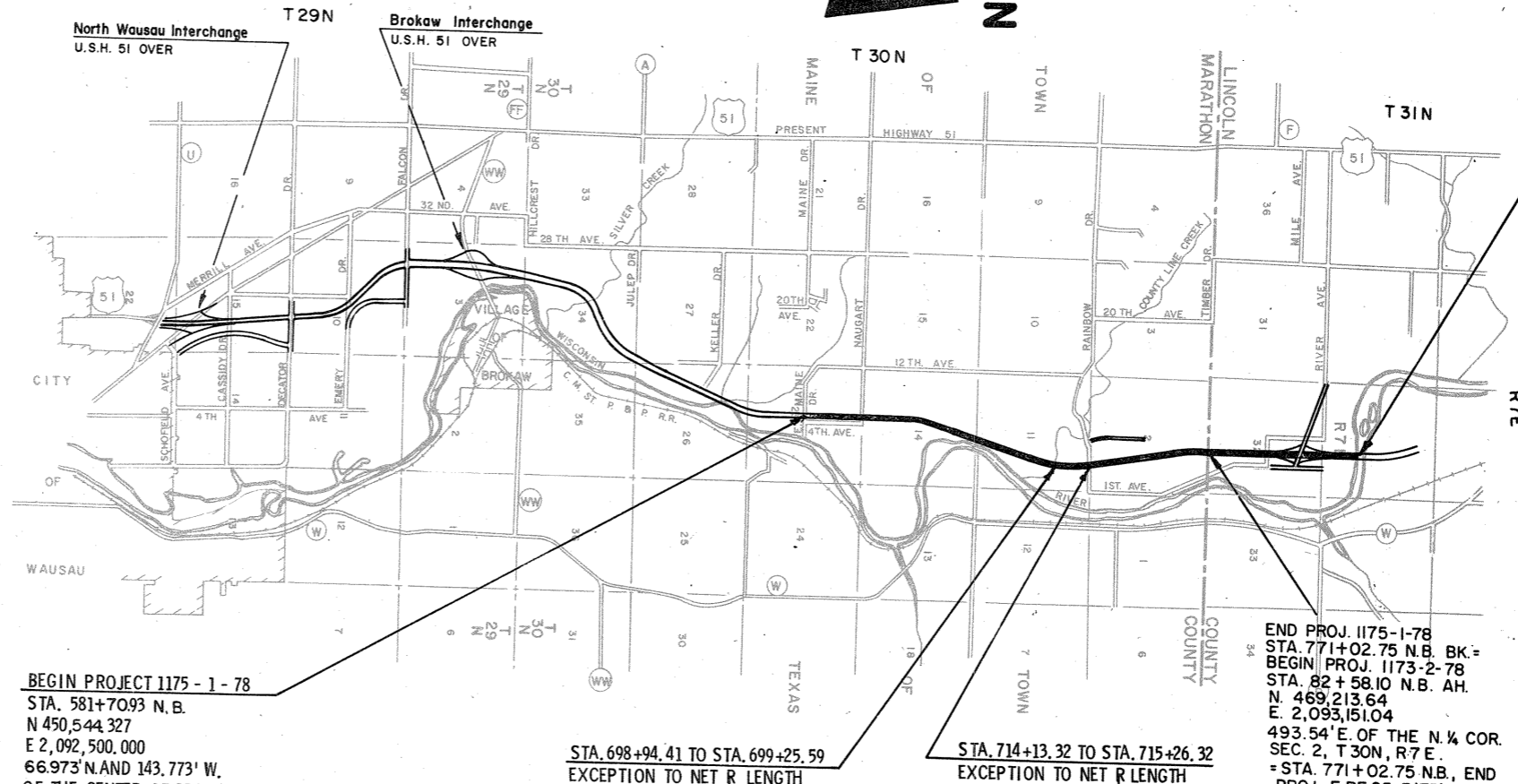
Scales  
 Plan 1 in. = 100 ft.  
 Profile Hor. 1 in. = 100 ft. Vert. 1 in. = 10 ft.  
 Cross Sections Hor. 1 in. = Vert. 1 in. =

**Design Designation**

A. D. T.	1969	6,860
A. D. T.	2000	15,500
D. H. V.		1,163
D.		60%
T.		8.6%
V.		70 M, P. H.

**Conventional Signs**

State Line	.....	Culverts in Place	.....
County Line	.....	Culverts Required	.....
Township or Range Line	.....	Drop Inlet	.....
Section Line	.....	Power Pole	.....
New Right of Way Line	.....	Telephone or Telegraph Pole	.....
Present Right of Way Line	.....	Right of Way Markers	.....
Wire Fence { Woven	.....	Reference Stake for Hubs Only	.....
Barbed	.....	Marsh	.....
Lot Line	.....	Hedge	.....
Corporate or City Limits	.....	Trees	.....
Property Line	.....	Ground Elevation	.....
Traveled Way or P. E.	.....	Grade Elevation	.....
Railroads	.....		
Base or Survey Line	.....		
Caution Symbol (combustible fluids under pressure)	.....		

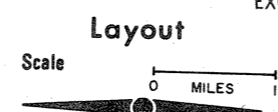


BEGIN PROJECT 1175-1-78  
 STA. 581+70.93 N.B.  
 N 450,544.327  
 E 2,092,500.000  
 66.973' N AND 143.773' W,  
 OF THE CENTER OF SEC. 23,  
 T 30N, R 7E  
 = STA. 581+01.93 OF F-RF05-3(75)

STA. 698+94.41 TO STA. 699+25.59  
 EXCEPTION TO NET R LENGTH

STA. 714+13.32 TO STA. 715+26.32  
 EXCEPTION TO NET R LENGTH

END PROJ. 1175-1-78  
 STA. 771+02.75 N.B. BK. =  
 BEGIN PROJ. 1173-2-78  
 STA. 82+58.10 N.B. AH.  
 N. 469,213.64  
 E. 2,093,151.04  
 493.54' E. OF THE N. & COR.  
 SEC. 2, T 30N, R 7E  
 = STA. 771+02.75 N.B., END  
 PROJ. F-RF 05-3(75)



NET LENGTH OF REFERENCE LINE, PROJECT 1175-1-78 = 3.558 MI.  
 NET LENGTH OF REFERENCE LINE, PROJECT 1173-2-78 = 1.266 MI.  
 TOTAL 4.824 MI.

END PROJECT 1173-2-78  
 STA. 149+41.92 N.B.  
 N 475,894.34  
 E 2,092,947.10  
 1,368.64' N. AND 420' E.  
 OF THE S & COR. OF SEC. 29,  
 T 31N, R 7E

STATE OF WISCONSIN  
 DEPARTMENT OF TRANSPORTATION  
 DIVISION OF HIGHWAYS

Surveyor D.A.M.-J.R.W. District Checker B.A.F.-G.S.W.  
 Designer D.T.C.-F.D.R. C.O. Checker R.L.C.

Correct:  
 Date 3/14/78 R.D. Schindler District Engineer  
 Recommended for Approval:  
 Date 4/16/78 J.P. Hennel Chief of Facilities Development  
 Approved:  
 Date 4/17/78 G.L. Geller State Highway Engineer

U.S. DEPARTMENT OF TRANSPORTATION  
 FEDERAL HIGHWAY ADMINISTRATION  
 REGION 6 WISCONSIN DIVISION

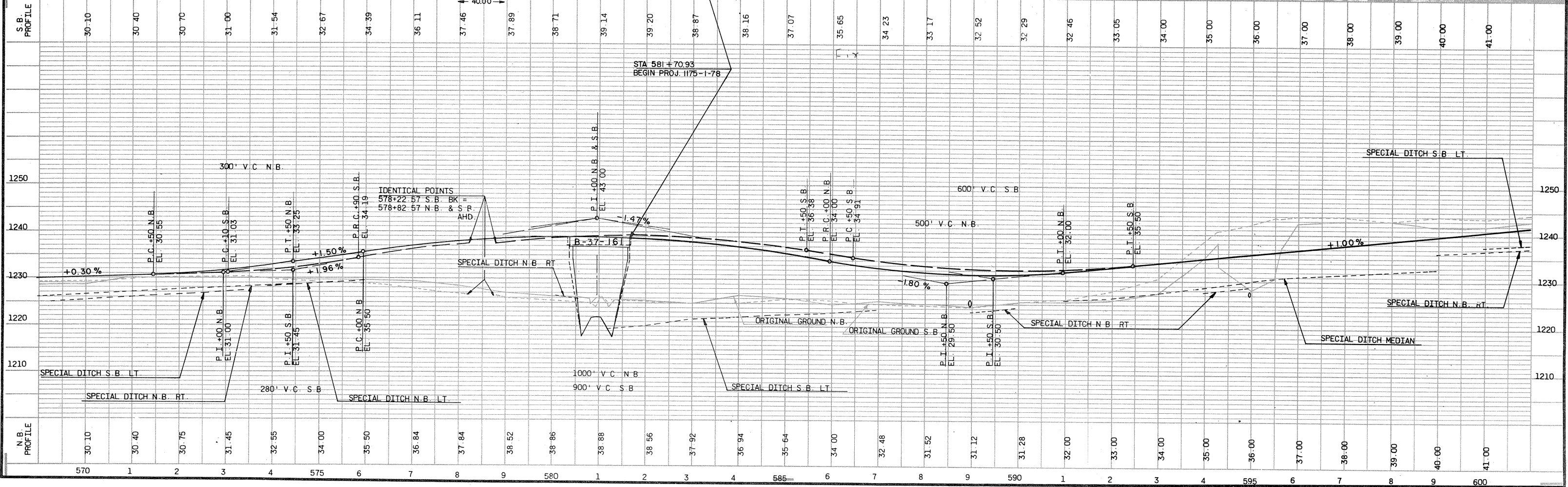
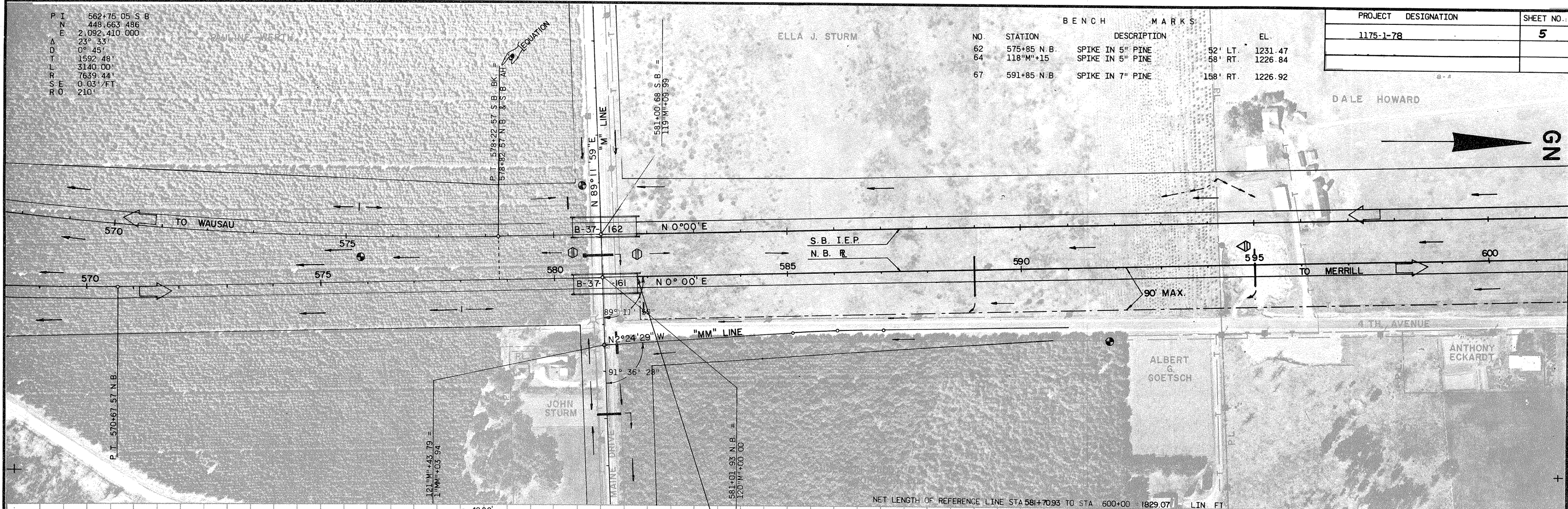
Approved:  
 Date \_\_\_\_\_ Division Engineer

All coordinates on this plan are referenced to the WISCONSIN COORDINATE SYSTEM Central Zone.

P I 562+75.05 S B  
 N E 448,663.486  
 E 2,092,410.000  
 Δ 23° 33'  
 D 0° 45'  
 T 1592.48'  
 L 3140.00'  
 R 7639.44'  
 S E 0.03'/FT  
 R O 210'

BENCH MARKS			
NO	STATION	DESCRIPTION	EL.
62	575+85 N.B.	SPIKE IN 5" PINE	52' LT. 1231.47
64	118'M'+15	SPIKE IN 5" PINE	58' RT. 1226.84
67	591+85 N.B.	SPIKE IN 7" PINE	158' RT. 1226.92

PROJECT DESIGNATION	SHEET NO.
1175-1-78	5



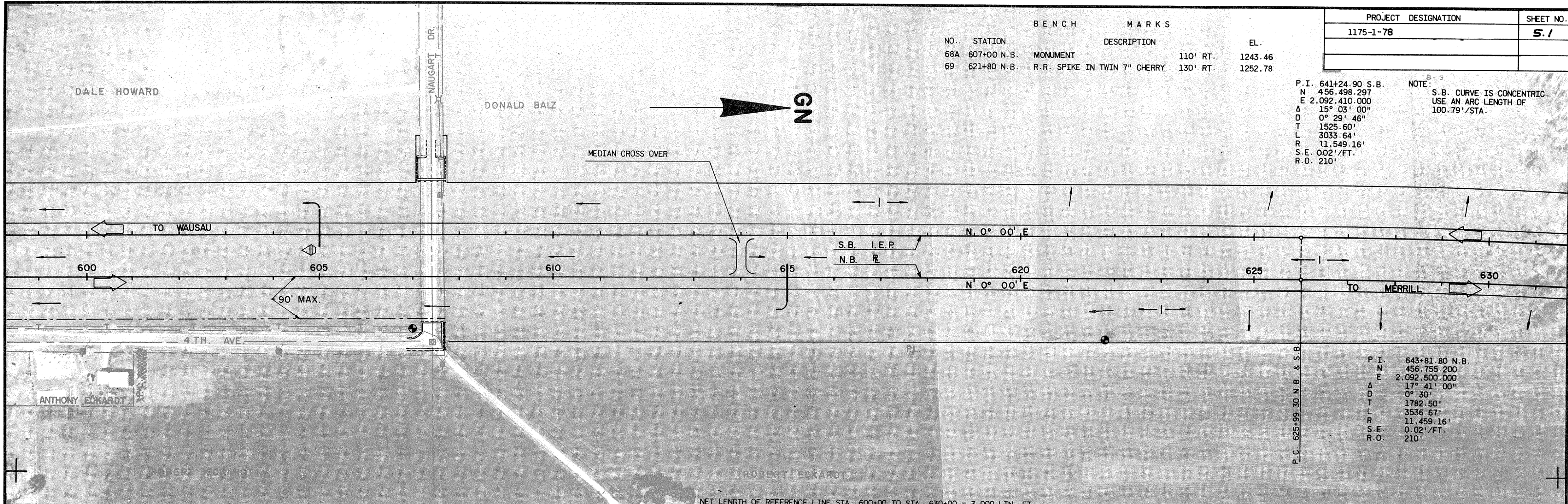
PROJECT DESIGNATION	SHEET NO.
1175-1-78	5.1

NO.	STATION	BENCH MARKS	DESCRIPTION	EL.
68A	607+00 N.B.	MONUMENT		1243.46
69	621+80 N.B.	R.R. SPIKE IN TWIN 7" CHERRY	130' RT.	1252.78

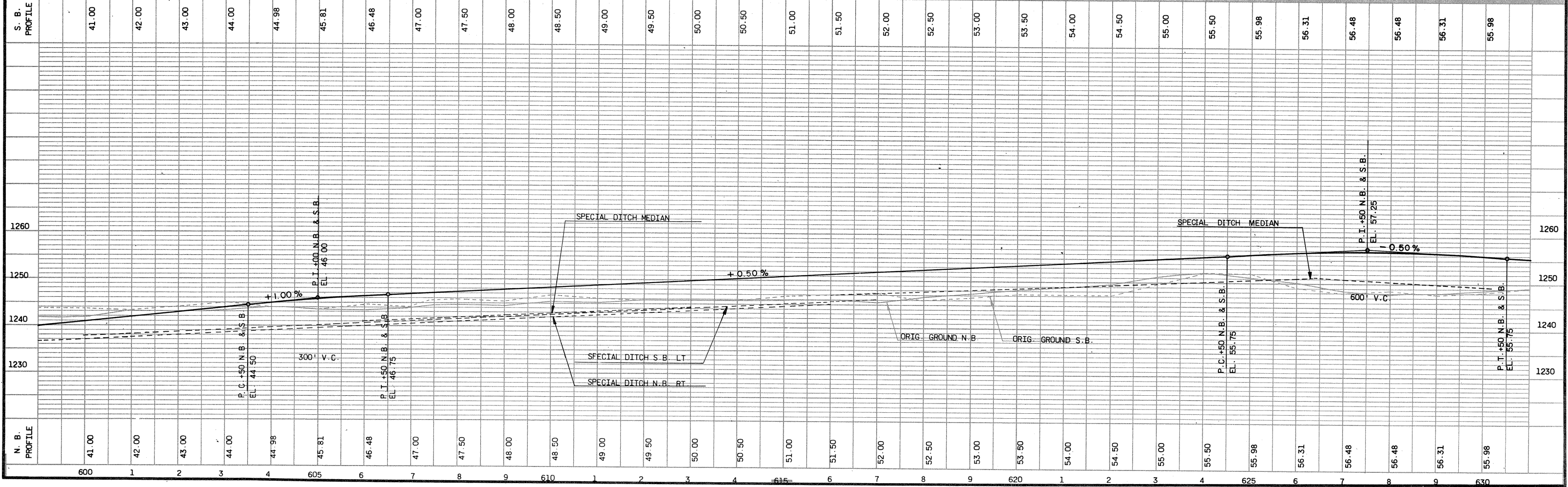
P.I. 641+24.90 S.B.  
 N 456,498.297  
 E 2,092,410.000  
 Δ 15° 03' 00"  
 D 0° 29' 46"  
 T 1525.60'  
 L 3033.64'  
 R 11,549.16'  
 S.E. 0.02'/FT.  
 R.O. 210'

NOTE:  
 S.B. CURVE IS CONCENTRIC.  
 USE AN ARC LENGTH OF  
 100.79'/STA.

P.I. 643+81.80 N.B.  
 N 456,755.200  
 E 2,092,500.000  
 Δ 17° 41' 00"  
 D 0° 30'  
 T 1782.50'  
 L 3536.67'  
 R 11,459.16'  
 S.E. 0.02'/FT.  
 R.O. 210'



NET LENGTH OF REFERENCE LINE STA. 600+00 TO STA. 630+00 = 3,000 LIN. FT.



DONALD E. BALZ

NOTE:  
S.B. CURVE IS CONCENTRIC.  
USE AN ARC LENGTH OF  
100.79' / STA.

P.I. STA. 641+24.90 S.B.  
N. 456,498.297  
E. 2,092,410.000  
Δ 15° 03' 00"  
D 0° 29' 46"  
T 1525.60'  
L 3033.64'  
R 11549.16'  
S.E. 0.02' / FT.  
R.O. 210'

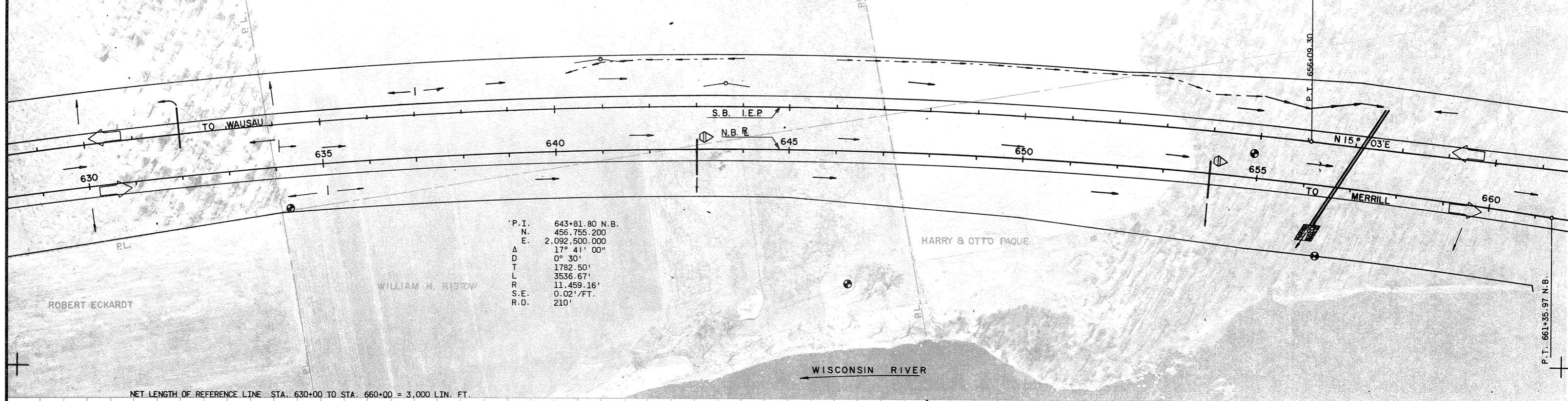
WILLIAM H. RISTOW

HARRY & OTTO PAQUE

BENCH MARKS

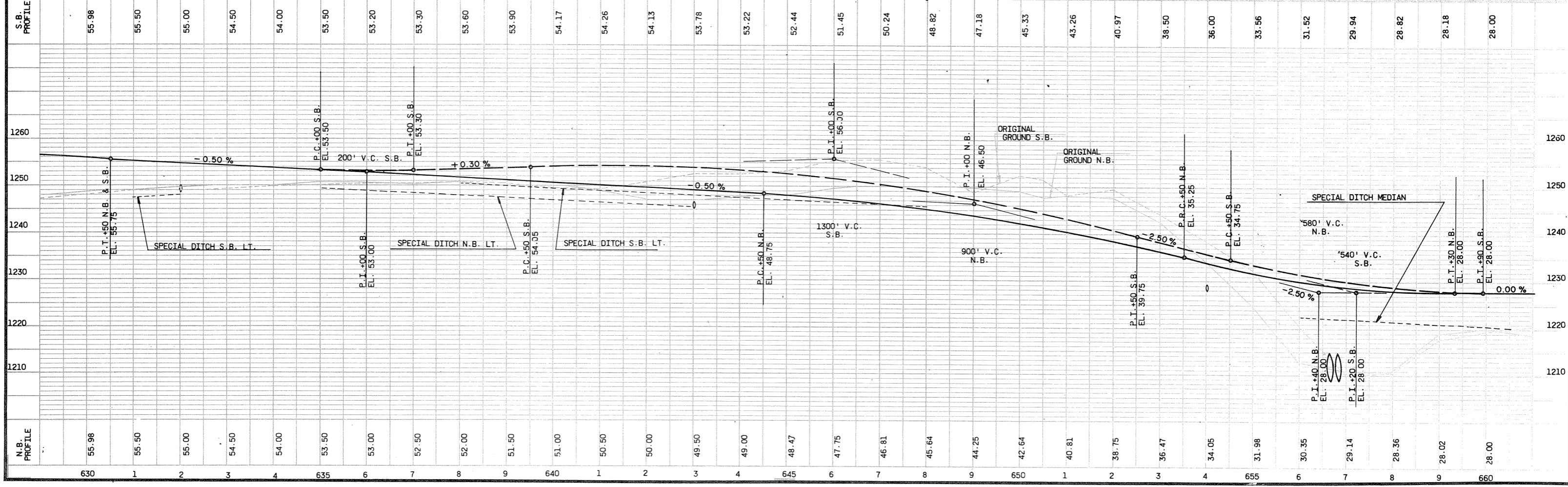
NO.	STATION	DESCRIPTION	EL.
70A	634+25 N.B.	R.R. SPIKE IN TWIN 16" OAK	90' RT. 1251.38
71	646+30 N.B.	R.R. SPIKE IN TWIN 20" ELM	280' RT. 1248.00
72	654+90 N.B.	SPIKE IN 8" BIRCH	52' LT. 1230.91
73	656+40 N.B.	R.R. SPIKE IN 12" ELM	150' RT. 1214.58

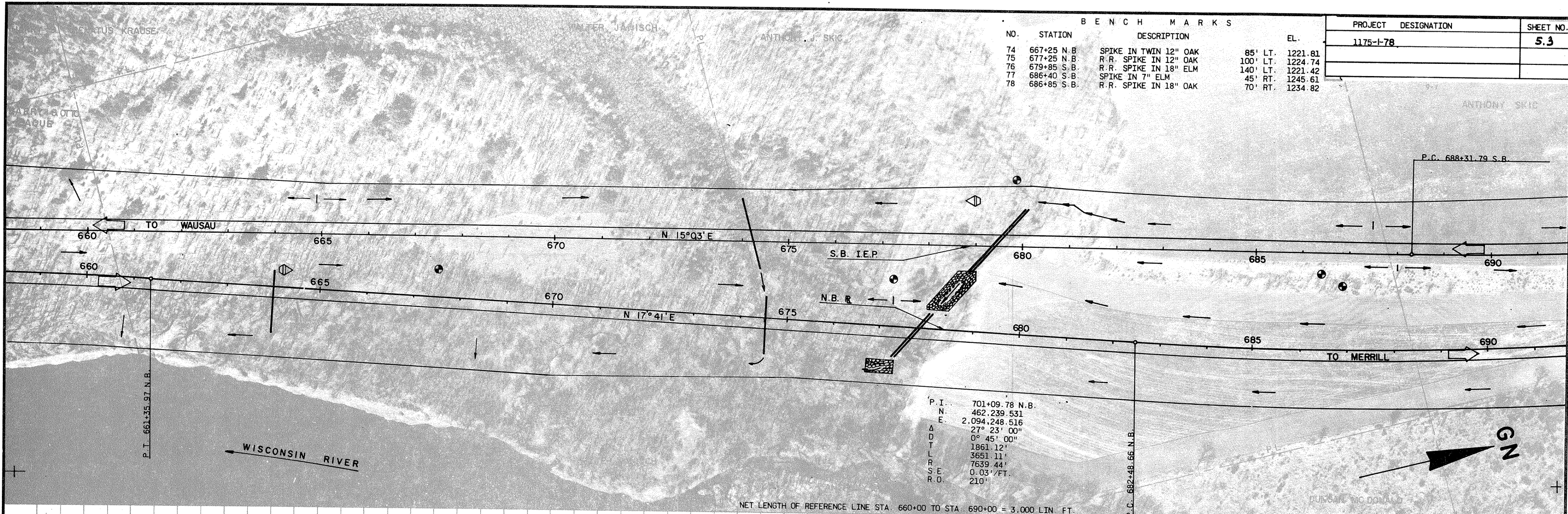
PROJECT DESIGNATION	SHEET NO.
1175-1-78	5.2



P.I. 643+81.80 N.B.  
N. 456,755.200  
E. 2,092,500.000  
Δ 17° 41' 00"  
D 0° 30'  
T 1782.50'  
L 3536.67'  
R 11,459.16'  
S.E. 0.02' / FT.  
R.O. 210'

NET LENGTH OF REFERENCE LINE STA. 630+00 TO STA. 660+00 = 3,000 LIN. FT.



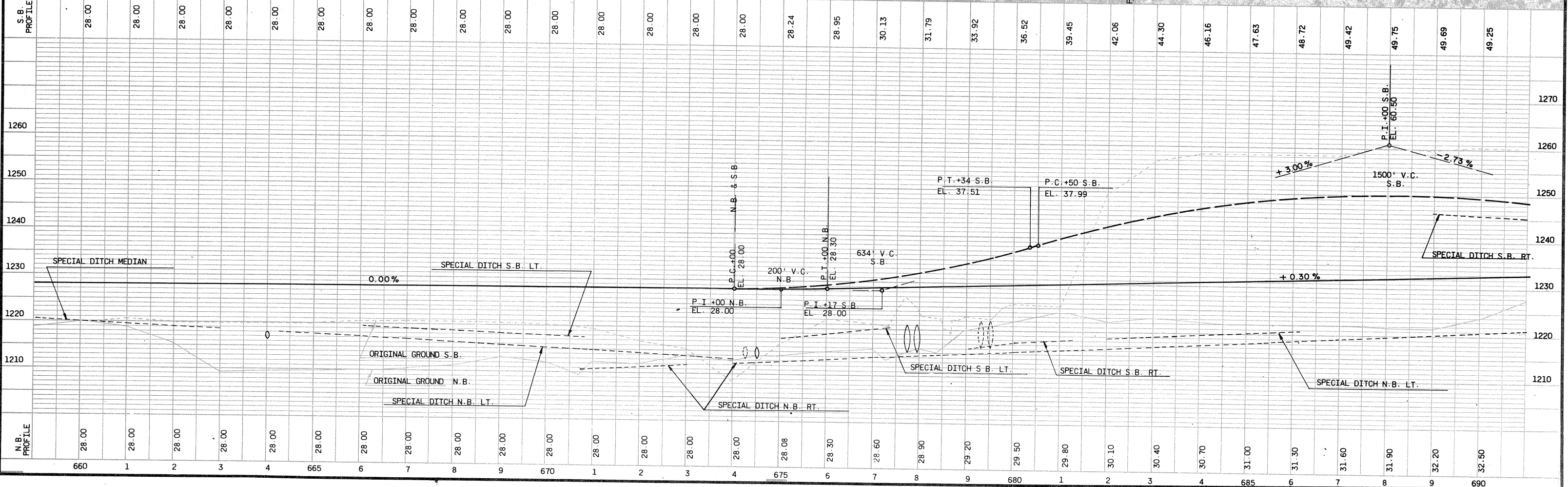


BENCH MARKS			
NO.	STATION	DESCRIPTION	EL.
74	667+25 N.B.	SPIKE IN TWIN 12" OAK	85' LT. 1221.81
75	677+25 N.B.	R.R. SPIKE IN 12" OAK	100' LT. 1224.74
76	679+85 S.B.	R.R. SPIKE IN 18" ELM	140' LT. 1221.42
77	686+40 S.B.	SPIKE IN 7" ELM	45' RT. 1245.61
78	686+85 S.B.	R.R. SPIKE IN 18" OAK	70' RT. 1234.82

PROJECT DESIGNATION	SHEET NO.
1175-178	5.3

P.I. 701+09.78 N.B.  
 N.E. 462,239.531  
 2,094,248.516  
 Δ 27° 23' 00"  
 0° 45' 00"  
 1861.12'  
 3651.11'  
 7639.44'  
 0.03'/FT.  
 210'

NET LENGTH OF REFERENCE LINE STA. 660+00 TO STA. 690+00 = 3,000 LIN. FT.



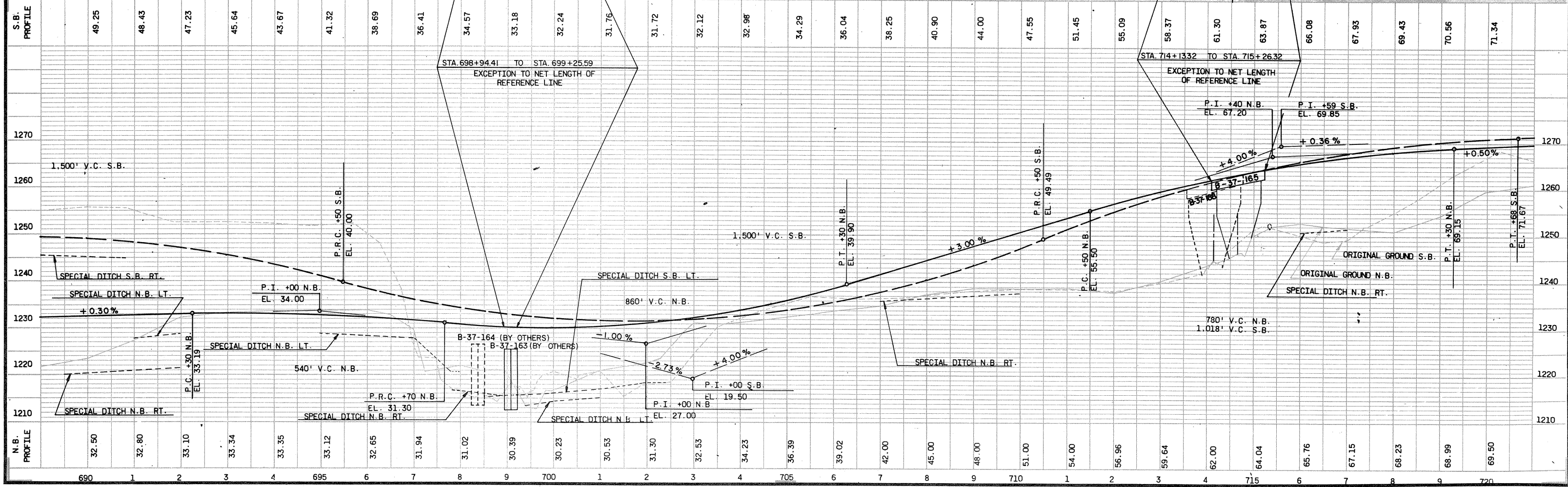
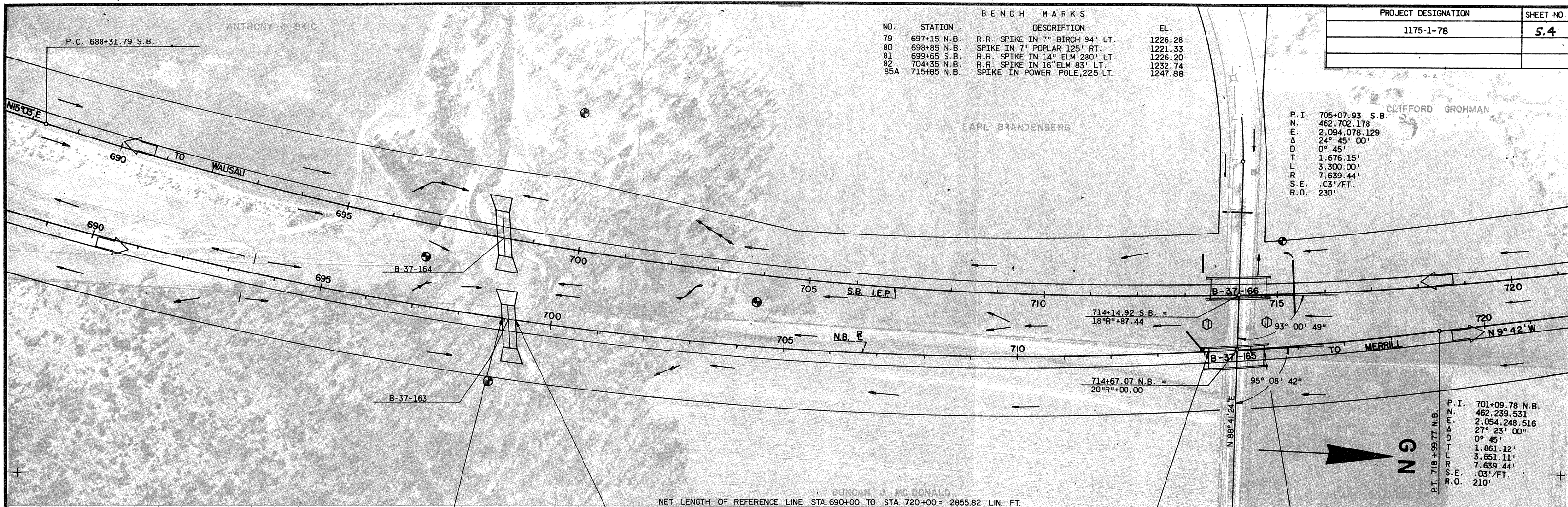
PROJECT DESIGNATION	SHEET NO.
1175-1-78	5.4

NO.	STATION	BENCH MARKS DESCRIPTION	EL.
79	697+15 N.B.	R.R. SPIKE IN 7" BIRCH 94' LT.	1226.28
80	698+85 N.B.	SPIKE IN 7" POPLAR 125' RT.	1221.33
81	699+65 S.B.	R.R. SPIKE IN 14" ELM 280' LT.	1226.20
82	704+35 N.B.	R.R. SPIKE IN 16" ELM 83' LT.	1232.74
85A	715+85 N.B.	SPIKE IN POWER POLE, 225' LT.	1247.88

CLIFFORD GROHMAN  
 P.I. 705+07.93 S.B.  
 N. 462.702.178  
 E. 2.094.078.129  
 Δ 24° 45' 00"  
 D 0° 45'  
 T 1.676.15'  
 L 3.300.00'  
 R 7.639.44'  
 S.E. .03'/FT.  
 R.O. 230'

P.I. 701+09.78 N.B.  
 N. 462.239.531  
 E. 2.054.248.516  
 Δ 27° 23' 00"  
 D 0° 45'  
 T 1.861.12'  
 L 3.651.11'  
 R 7.639.44'  
 S.E. .03'/FT.  
 R.O. 210'

DUNCAN J. MC DONALD  
 NET LENGTH OF REFERENCE LINE STA. 690+00 TO STA. 720+00 = 2855.82 LIN. FT.



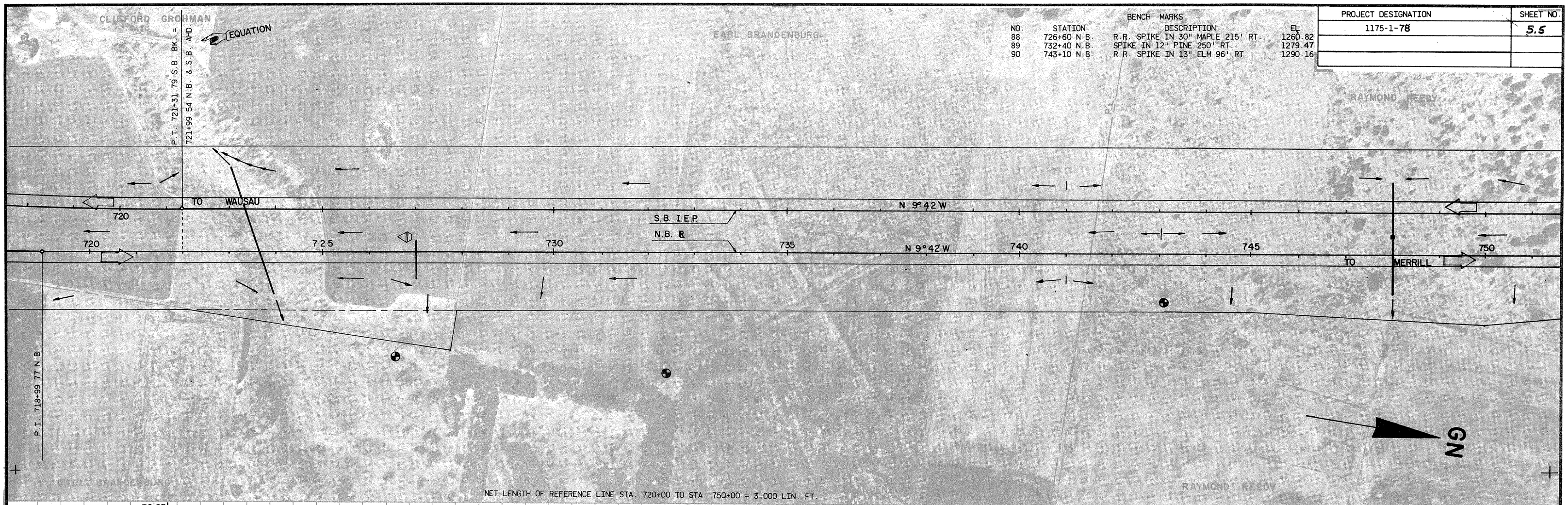
CLIFFORD GROHMAN

EARL BRANDENBURG

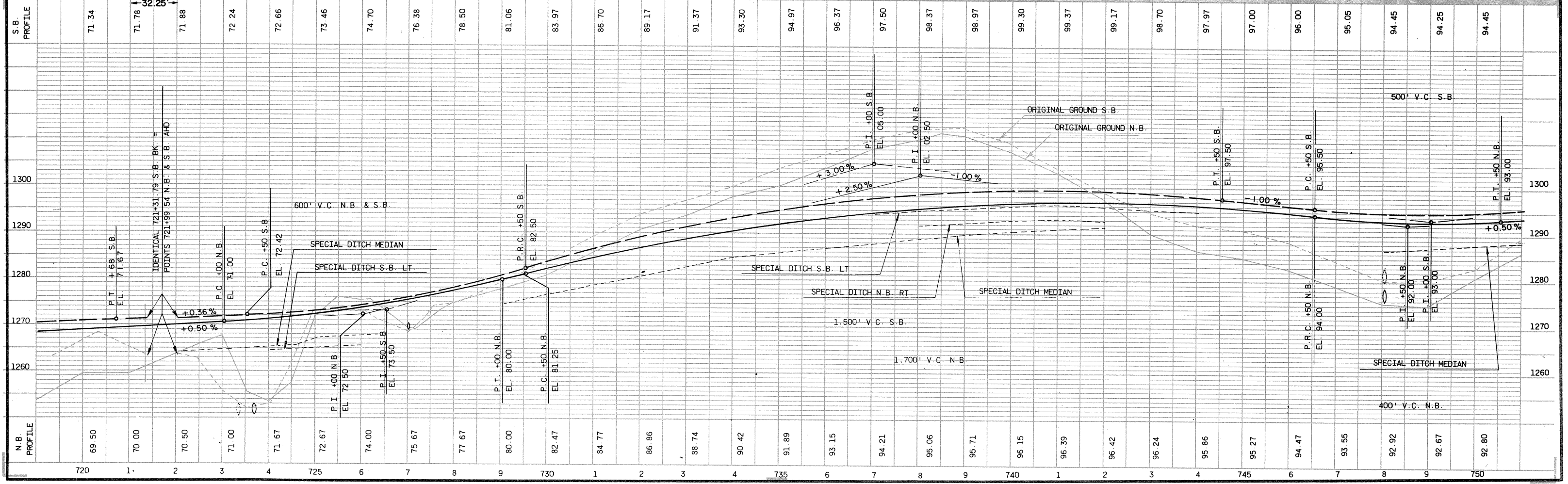
BENCH MARKS

NO.	STATION	DESCRIPTION	EL.
88	726+60 N.B.	R.R. SPIKE IN 30" MAPLE 215' RT.	1260.82
89	732+40 N.B.	SPIKE IN 12" PINE 250' RT.	1279.47
90	743+10 N.B.	R.R. SPIKE IN 13" ELM 96' RT.	1290.16

PROJECT DESIGNATION	SHEET NO.
1175-1-78	5.5

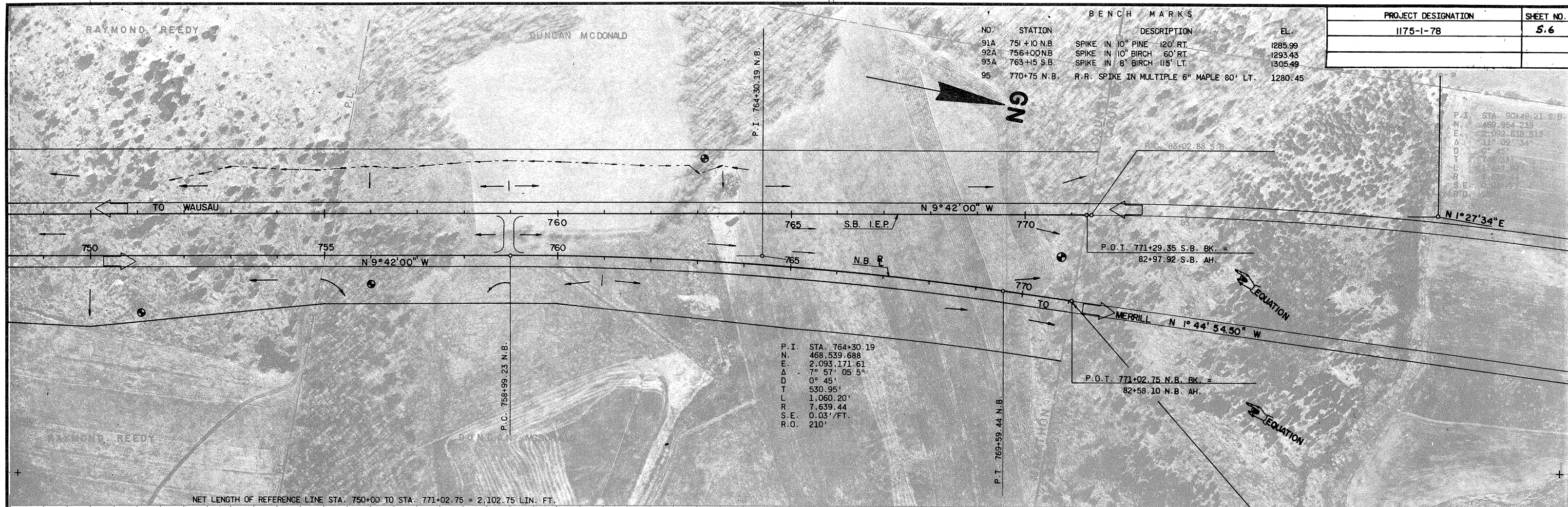


NET LENGTH OF REFERENCE LINE STA. 720+00 TO STA. 750+00 = 3,000 LIN. FT.



PROJECT DESIGNATION	SHEET NO.
1175-1-78	5.6

NO.	STATION	DESCRIPTION	EL.
91A	751+10 N.B.	SPIKE IN 10" PINE 120' RT.	1285.99
92A	756+00 N.B.	SPIKE IN 10" BIRCH 60' RT.	1293.43
93A	763+15 S.B.	SPIKE IN 8" BIRCH 115' LT.	1305.49
95	770+75 N.B.	R.R. SPIKE IN MULTIPLE 6" MAPLE 80' LT.	1280.45



NET LENGTH OF REFERENCE LINE STA. 750+00 TO STA. 771+02.75 = 2,102.75 LIN. FT.

